

2022

LITTLE RIVER MEMORIAL HOSPITAL
COMMUNITY HEALTH NEEDS ASSESSMENT



June 2022

Table of Contents

<i>INTRODUCTION</i>	4
<i>DEFINED COMMUNITY</i>	4
<i>CHNA PROCESS</i>	4
1. Evaluation of 2019 CHNA Implementation Strategies:	4
2. Collection of Public Health Data:	4
3. Interviews	5
4. Analysis	5
<i>HEALTH RESOURCES</i>	5
Acute Care Hospitals.....	5
Other Health Care Resources.....	6
<i>DEMOGRAPHIC PROFILE OF LITTLE RIVER COUNTY</i>	7
Population Demographics.....	7
Housing.....	7
Internet Access	8
Education	8
Economics.....	8
<i>PUBLIC HEALTH IN LITTLE RIVER COUNTY IN 2022</i>	9
Common Health Problems.....	9
Prevalence of Injuries.....	10
Access to Providers	10
Other Public Health Factors	11
<i>EVALUATION OF 2019 CHNA</i>	12
<i>SURVEY DATA</i>	12
Methodology.....	12
Survey Results	13
Summary	13
<i>APPENDIX A – DEMOGRAPHIC DATA</i>	14
TABLE 1 – U.S. CENSUS BUREAU DEMOGRAPHIC DATA	15
TABLE 2 – COUNTY HEALTH STATISTICS	17

TABLE 3 – BRFSS COUNTY ESTIMATES	19
<i>APPENDIX B – SAMPLE SURVEY.....</i>	20

INTRODUCTION

Little River Memorial Hospital (“LRMH”) is the sole not-for-profit community hospital in Little River County, Arkansas. As the sole acute care facility in the County, LRMH is committed to providing high-quality care that addresses the needs of Little River County community with focused, friendly, compassionate care for each person it serves. As both part of its mission and in response to the Internal Revenue Service (IRS) requirements, LRMH conducts a Community Health Needs Assessment (CHNA) every three years to (1) assess the health needs of the community and (2) adopt strategies to implement improvements to community health based on the responses received and (3) evaluate the impact of strategies adopted from past CHNAs.

This document is a summary of the evidence collected during the community health needs assessments, as required by the IRS during tax year 2022. It will serve as a compliance document for LRMH, as well as a resource for the community at large until the next assessment cycle.

DEFINED COMMUNITY

This CHNA takes into account input from persons who represent the broad interests of the community served by LRMH (this provision is related to assessing community health needs rather than defining the community). For CHNA purposes, a hospital facility may take into account all of the relevant facts and circumstances, including the geographic area served by a hospital facility, target population(s) served (for example, children, women, or the elderly), and the hospital’s principal functions (for example, focus on a particular specialty area or targeted disease).

LRMH is the single largest provider of acute care services and is part of the broader Little River Medical Center Inc. group. For the purposes of this CHNA, LRMH’s defined community is the overall population of Little River County, Arkansas.

CHNA PROCESS

1. Evaluation of 2019 CHNA Implementation Strategies: First, LRMH reviewed its 2019 CHNA Report and the plans created to implement changes based on that report. Unfortunately, the COVID-19 pandemic was a major barrier to implementation. Additional details are included in the Evaluation of 2019 CHNA section of this report.
2. Collection of Public Health Data: To update its community research from its 2019 CHNA report, LRMH collected demographic and health statistics for Little River County based on secondary data collection from the United States Census Bureau, the Arkansas Department of Health, and the County Health Rankings & Roadmaps (part of the Mobilizing Action Toward Community Health project, a

collaboration between the Robert Wood Johnson Foundation and the University of Wisconsin Population Health Institute).

Demographic information for Little River County is attached to this report within tables in **Appendix A**, along with supplemental demographic profiles of surrounding counties, the state of Arkansas, and the United States, for additional context.

3. **Interviews:** In June 2022, surveys were provided to LRMH staff to conduct interviews with selected representatives from the community. These surveys were developed to allow LRMH staff to have open discussions with interviewees about the most critical health care needs of the community, their opinions on needed services, and obstacles to access to healthcare.

As required by the IRS, LRMH staff chose to interview (1) a representative with special knowledge of or expertise in public health and (2) one representative of medically underserved, low-income or minority populations. For the third interview, LRMH staff chose to speak with an additional member of the community that has experience with public health in the County.

Results and findings are described in the Survey Data portion of this report.

4. **Analysis:** Information gathered in the steps above was analyzed and reviewed to identify health issues of uninsured persons, low-income persons and minority groups and the community as a whole.

As a part of the CHNA process, LRMH will develop an implementation plan related to the identified needs of the community. These needs will be prioritized, taking into account capabilities of the hospital and the degree of influence the LRMC has to impact the overall health for the community.

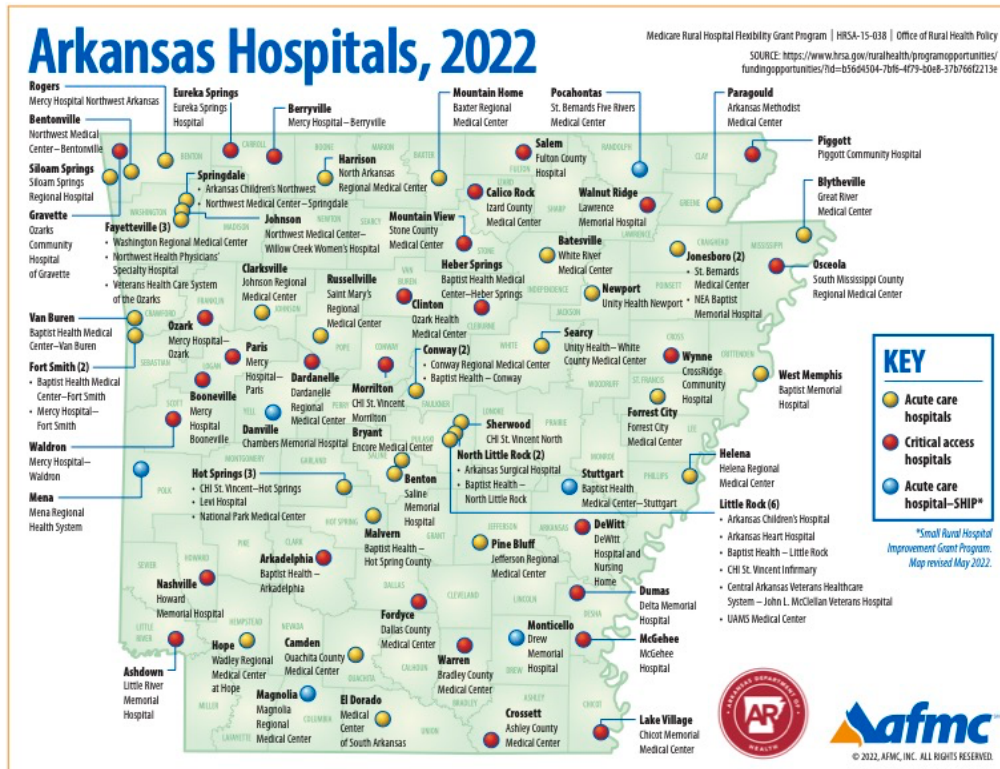
HEALTH RESOURCES

Acute Care Hospitals

LRMH is the only source for acute care in the County. As it has less than 25 acute care inpatient beds, is located more than 35 miles from any other hospital, maintains an average inpatient stay of less than 96 hours, and provides 24/7 emergency care services, LRMH qualifies as a Critical Access Hospital.¹

LRMH is one of only 28 Critical Access Hospitals in Arkansas in 2022. A map of the other Critical Access Hospitals is shown below.

¹ "Critical Access Hospitals (CAHs)." Rural Health Information Hub. <https://www.ruralhealthinfo.org/topics/critical-access-hospitals>.



Source: Arkansas Department of Health, <https://www.healthy.arkansas.gov/programs-services/topics/critical-access-hospitals>

As a Critical Access Hospital, LRMH cannot and is not meant to take more complex cases or cases requiring long inpatient stays. For these reasons, Little River County residents frequently have to seek care in the Texarkana area, from either Wadley Regional Medical Center or the CHRISTUS St. Michael Health System.

Other Health Care Resources

Other than the Medical Center, Little River County residents benefit from many other health care resources:

- **Area Clinics** – Little River County has several primary care family practices and one pediatric primary care practice. Many of these clinics are expanding their provider base with APRNs, rather than additional physicians. Additional details may be found in the Access to Providers section.
- **Area Nursing Homes** – There are two skilled nursing facilities and one residential care facility in Little River County (Little River Nursing & Rehab and Pleasant Manor Nursing Home), providing a total of 186 beds. Additionally, Pinecrest Lodge, a residential care facility, also provides Little River County with an additional 13 beds. These facilities provide residential, medical and rehabilitative services to the elderly and disabled in the community.

- *Little River County Health Unit* – The Little River County Health Unit is a general resource for public health in the County. This unit provides services including WIC, family planning, prenatal care, immunizations, communicable disease follow-up, sexually transmitted disease and HIV testing, tuberculosis testing and treatment, breast care and environmental services.

DEMOGRAPHIC PROFILE OF LITTLE RIVER COUNTY

Located in rural Southwest Arkansas, Little River County has an estimated population of 11,944 residents spread across approximately 535 square miles.² Like many rural Arkansas counties, Little River County’s population is shrinking, having lost nearly 10% of its population since the 2010 Census was conducted.³

Population Demographics

Currently, Little River County’s population skews older than surrounding counties, with a smaller share of residents under 18 year of age (22.4%) and a larger share of residents over the age of 65 (20.90%).



Map created by Mike Keckhaver; Source: <http://www.encyclopediaofarkansas.net/>

The majority of Little River’s residents are White (75.5%), while 19.9% are Black or African American and 3.7% are Hispanic or Latino. A very small share of Little River County residents speak a language other than English in the home (1.7%), compared to the average percentage in Arkansas (7.6%) or in surrounding counties (for example, 31% in Sevier County).

Housing

A significant portion of Little River County residents are home owners, with nearly 78% of all homes occupied by their owners, while only 22% of housing units are occupied by renters. However, property values throughout the County are notably depressed at a median of \$77,400.00, lower than all surrounding counties and significantly lower than

² Census QuickFacts for Little River County, Arkansas (2021);

<https://www.census.gov/quickfacts/fact/table/littlerivercountyarkansas,US/PST045221>

³ “2020 Census Data.” Arkansas Democrat Gazette. <https://www.arkansasonline.com/2020censusdata/>

the state median value of \$133,000.00. Understandably, the County’s rental rates are also significantly lower than those in surrounding counties, at a median of \$579.00 per month.

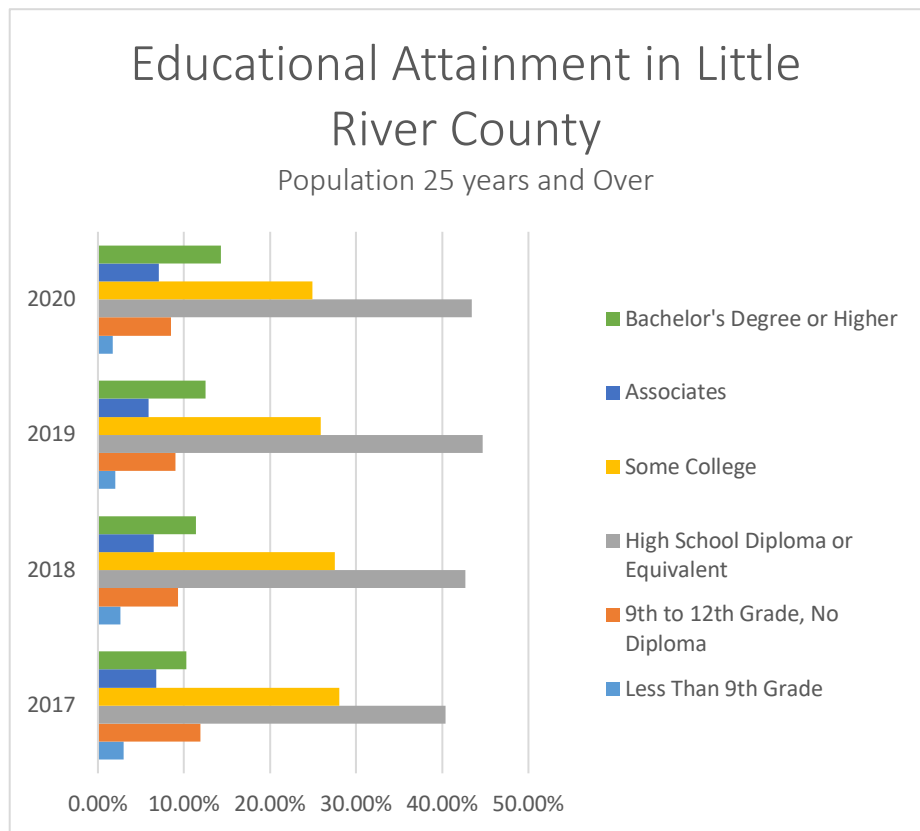
Internet Access

The majority of Little River County residents (86.3%) report that they live in a household with a computer. However, County residents have slightly lower levels of access to broadband internet at home (72.6%) than individuals in the surrounding counties of Miller, Sevier, and Hempstead counties.

Education

Little River County’s residents have seen slight increases in their rates of education in the past few years. Nearly 90% of the County’s residents have a high school education or higher, which is above both state and national levels.

While very few County residents (14.3%) have a bachelor’s degree or higher, the share of the population that has Bachelor’s degrees or higher has grown slightly more than other categories of educational attainment.



Source: U.S. Census Bureau American Community Survey, Table S1501

Economics

At \$48,966.00 per year, the median household income in Little River County is higher than any of its surrounding counties, and is nearly as high as the state’s median yearly household income (\$49,475.00). Similarly, median per capita income in the County is, on average, \$4,000 to \$5,000 higher than incomes in the surrounding counties.

Notably, the poverty rate in Little River County is significantly lower than that of Table 1 in the **Appendix A** provides a brief summary of statistics for Little River County, based on data from the U.S. Census Bureau and compared to the surrounding Miller County, Sevier County, Hempstead County, as well as the state of Arkansas and the United States at large.

PUBLIC HEALTH IN LITTLE RIVER COUNTY IN 2022

Individual health is closely intertwined with community health. Community health, which includes both the physical and social environment in which individuals live, work and play, is profoundly affected by the collective behaviors, attitudes and beliefs of everyone who lives in the community.

Health statistics can help public health experts and the medical providers within a community anticipate community health needs before they arise, and plan accordingly.

In a community as small as Little River County, failure to anticipate future health needs of the community could cause a strain on the medical system, reduce access to care for the County's residents, and increase health inequity.

Further, the public health of Little River County must be viewed in the wider context of South Arkansas and the state as a whole. According to a collaborative ranking published by Sharepoint and the Boston University School of Public Health, Arkansas is the 49th healthiest state in the nation, based on data for healthcare access, physical health, community support and food access.⁴

Even in context of this statewide ranking, Little River County is relatively poor, unhealthy, and lacking in healthcare resources. Tables 1, 2, and 3 in **Appendix A** show data for Little River County, as well as the surrounding counties.

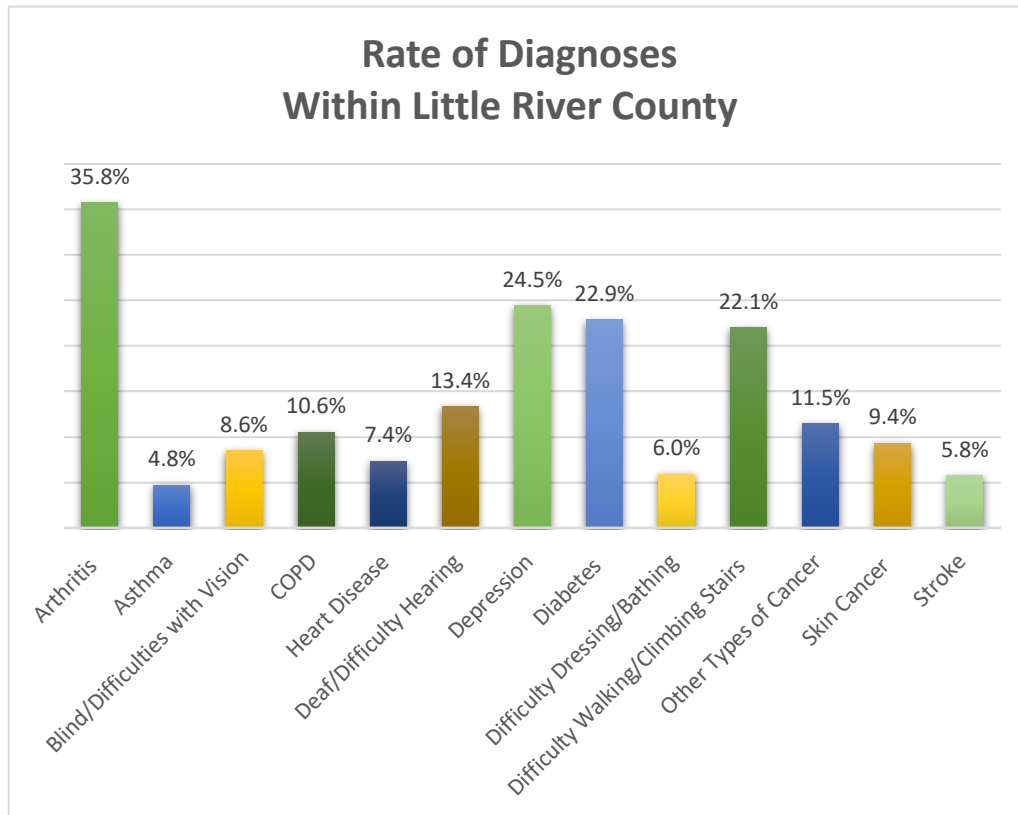
It should be noted that the majority of this data is pre-2020 – presumably, a significant amount of national health data collection was put on hold during the COVID-19 pandemic. For these reasons, one should assume that these statistics (for example, the county's estimated life expectancy) are likely to shift significantly once post-COVID-19 data becomes available in the next few years.

Common Health Problems

The chart below shows the rate of common diagnoses for a selected diseases or health issues within the overall population of Little River County.

Over one third of County residents have been diagnosed with arthritis, and nearly a quarter of the County has depression, diabetes, and problems associated with mobility (difficulty walking or climbing stairs). Notably, the rate of heart disease – a leading cause of death in the United States – is relatively low in Little River County, at just over 7%.

⁴ Community Well-Being Index. <https://wellbeingindex.sharecare.com/interactive-map/>.



Source: 2019 Data from the Arkansas Department of Health
(See Appendix A, Table 3)

Prevalence of Injuries

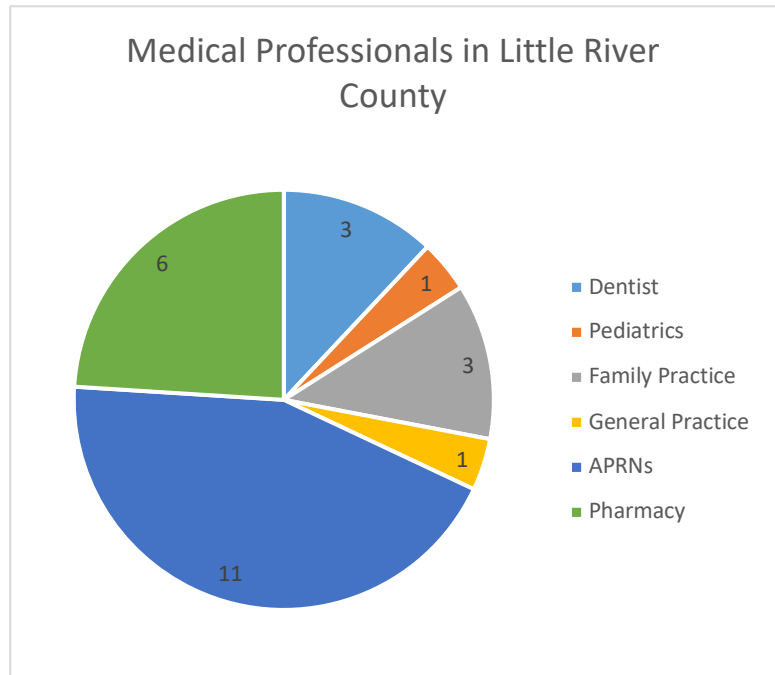
As the only acute care provider in the County, LRMH has a vested interest in determining what injuries occur most often in the County. Relative to the surrounding counties, Little River County has reported fewer instances of injury-related hospital discharges per year – 87 injury discharges per year compared to 149, 171, and 279 in Miller County, Sevier County, and Hempstead County, respectively.

Access to Providers

The pie chart to the right shows the number of medical professionals in Little River County, according to the Arkansas Department of Health’s 2020 report on Arkansas Health Professions Manpower. This data only accounts for providers who maintain a Little River County address – meaning some providers may practice or work outside the County.

While Little River County has much greater numbers of Registered Nurses, LPNs, and Medical Assistants, data was only gathered on providers who can see patients independently.

As of 2020, Little River County only has five primary care providers – three family practice physicians, one pediatrician, and one general practice physician. The bulk of the County’s medical providers are APRNs, although the Department’s report only records 11 APRNs with addresses in Little River County.



Other Public Health Factors

Food Insecurity: Long-term food insecurity can affect learning, development, productivity, physical and mental health, and family life.⁵ Nearly 20% of Little River County residents are food insecure. Further, 37.8% of adults in the County are obese, as well as nearly 25% of children, which can increase the overall community’s prevalence for diabetes, heart disease, and stroke.

Teen Birth Rates: Rural teens make up 15 percent of the adolescent population, but account for 19 percent of all teen births, which are linked to cyclical poverty, low educational attainment and poor health for adolescents and their children.⁶ A notable positive for Little River County is that, at a rate of 16 births per year, Little River County’s teen birth rate is significantly lower than the surrounding counties.

Preventative Healthcare: When it comes to preventative healthcare, nearly 93% of Little River County residents have seen a physician within a two-year period, but only 45% received a yearly dental visit. Further, only 49% of County residents receive a flu shot each year - a lower rate than in Miller, Sevier, and Hempstead counties. 13% of County residents report that they cannot afford to see a doctor, or otherwise struggle with the cost of medical care.

⁵ “Rural Hunger and Access to Healthy Food.” Rural Health Information Hub. <https://www.ruralhealthinfo.org/topics/food-and-hunger>

⁶ “Addressing Pregnancy Among Rural Teens.” National Conference of State Legislators. <https://www.ncsl.org/research/health/addressing-pregnancy-among-rural-teens.aspx>

EVALUATION OF 2019 CHNA

LRMC prepared an implementation strategy in response to the needs identified in its 2019 Community Health Needs Assessment. A listing of those needs, along with the steps taken by LRMH to address them, is listed below:

- Obesity and heart disease
- Wellness and health education
- Drug abuse prevention

Unfortunately, the COVID-19 pandemic was a major barrier to the implementation of any plans after the 2019 CHNA. Now, with a vaccinated workforce and cases at a manageable level in Little River County, LRMH is hopeful that they can begin to work on the goals identified in the 2022 surveys.

SURVEY DATA

To gather information about the community's current attitudes and needs as it related to public health, LRMH staff asked three key interviewees to complete surveys. These surveys were created to assess public perceptions of the county's health status and unmet needs.

The surveys were developed to either facilitate an open discussion with the survey respondents, or respondents could complete the surveys with written responses. This year, the respondents chose to provide written responses.

Methodology

LRMH conducted these surveys with three key interviewees. The interviewees were asked to participate based on their specialized knowledge or expertise in public health or their knowledge of underserved and minority populations.

The interviews were conducted using a standard questionnaire. A copy of the interview instrument is included in **Appendix B**. Comments were provided on the following issues:

- Health and quality of life for residents of Little River County
- Current strengths in the community and public health
- Opinions regarding the most important health issues facing community residents
- Opinions regarding the types of services Little River County currently lacks
- Barriers to improving health and quality of life for residents of the community

Respondents filled out each survey in writing, answering open ended questions. The respondents were assured that personal identifiers, such as names or organizational affiliations, would not be connected in any way to the information presented in this

report. Therefore, information included in the report may have been altered slightly to the extent needed only to preserve confidentiality.

This data collection technique does not provide a quantitative analysis of the respondent's opinions, but reveals some of the factors affecting the views and sentiments about overall health and quality of life within the community.

Survey Results

While many issues were raised by each individual respondent, all respondents brought up three primary common issues. These issues are summarized below:

- *Mental and Behavioral Health:* All survey respondents identified the lack of mental and behavioral health providers in Little River County as a general detriment to public health and quality of life in the community.
- *COVID-19:* All survey respondents identified the COVID-19 pandemic as a barrier to the general public's access to healthcare resources. Additionally, several respondents identified the pandemic's negative effects on the general community's mental health.
- *Urgent Care Clinics:* The respondents addressed this issue differently, but seemed to agree that the community would benefit from the ability to see a healthcare provider for non-emergent needs outside of regular business hours.

Summary

Because the COVID-19 pandemic, LRMH's management does not feel that they were able to properly address the matters identified in the 2019 CHNA. For this reason, the hospital will create an implementation strategy addressing both 2019 issues and 2022 issues:

- Obesity and heart disease
- Wellness and health education
- Drug abuse prevention
- Mental and Behavioral Health
- COVID-19
- Urgent Care Clinics

AS LRMH develops its updated implementation strategy, public comments on this CHNA report and any comments or ideas about implementation are welcomed. Comments may be directed to LRMH's management at 451 W. Locke St., Ashdown, Arkansas 71822.

APPENDIX A – DEMOGRAPHIC DATA

TABLE 1 – U.S. CENSUS BUREAU DEMOGRAPHIC DATA						
	Little River County	Miller County	Sevier County	Hempstead County	Arkansas	United States
POPULATION						
<i>Population Estimate (2021)</i>	11,944	42,649	15,783	19,694	3,025,891	331,893,745
<i>Population, percent change (4/1/2020 to 7/1/2021)</i>	-0.70%	0.10%	-0.40%	-1.80%	0.50%	0.10%
<i>Persons under 5 years</i>	5.80%	6.40%	7.50%	7.00%	6.20%	6.00%
<i>Persons under 18 years</i>	22.40%	23.30%	28.60%	25.70%	23.20%	22.30%
<i>Persons 65 years & over</i>	20.90%	17.20%	14.90%	18.50%	17.40%	16.50%
<i>Female persons</i>	51.80%	50.80%	49.90%	51.60%	50.90%	50.80%
RACE, ETHNICITY, AND LANGUAGE						
<i>White</i>	75.50%	71.10%	87.80%	65.70%	79.00%	76.30%
<i>Black or African American</i>	19.90%	25.40%	4.20%	30.50%	15.70%	13.40%
<i>Hispanic or Latino</i>	3.70%	3.60%	34.30%	13.30%	7.80%	18.50%
<i>Language other than English spoken in the home</i>	1.70%	2.10%	31.80%	11.30%	7.60%	21.50%
HOUSING						
<i>Households</i>	5,292	16,237	5,690	8,100	1,170,544	122,354,219
<i>Owner-Occupied Housing Rate</i>	77.90%	65.80%	66.90%	68.50%	65.80%	64.40%
<i>Renter-Occupied Housing Rate</i>	22.1%	34.2	33.1	31.5	34.2	35.6
<i>Median Value of Owner-Occupied Homes</i>	\$77,400	\$113,400	\$95,000	\$87,700	\$133,600	\$229,800
<i>Median Monthly Mortgage Costs</i>	\$825	\$1,116	\$904	\$942	\$1,103	\$1,621

<i>Median Rent</i>	\$579	\$742	\$601	\$681	\$760	\$1,096
<i>Persons per Household</i>	2.3	2.59	2.96	2.63	2.5	2.6
<i>Households with a Computer</i>	86.30%	87.10%	85.20%	83.40%	88.20%	91.90%
<i>Households with Broadband Internet</i>	72.60%	79.10%	77.70%	75.70%	77.00%	85.20%
EDUCATION						
<i>High School Graduate or Higher</i>	89.80%	85.70%	75.70%	84.00%	87.20%	88.50%
<i>Bachelor's Degree or Higher</i>	14.30%	18.00%	13.40%	16.00%	23.80%	32.90%
HEALTH						
<i>With a disability, under age 65 years</i>	14.40%	14.30%	11.50%	14.60%	12.90%	8.70%
<i>Persons without health insurance, under age 65 years</i>	9.60%	9.40%	18.40%	12.60%	10.90%	10.20%
ECONOMICS						
<i>Median household income</i>	\$48,966	\$45,391	\$47,872	\$45,484	\$49,475	\$64,994
<i>Per capita income in past 12 months</i>	\$27,057	\$23,828	\$23,423	\$22,178	\$27,724	\$35,384
<i>Persons in poverty</i>	16.20%	19.20%	16.70%	18.70%	15.20%	11.40%
<i>Total employment</i>	2,676	11,772	4,173	5,841	1,055,534	134,163,349
GEOGRAPHY						
<i>Population per square mile</i>	24.7	69.5	30.2	31.1	56	87.4
<i>Land area in square miles</i>	532.25	625.58	565.13	727.52	52,035.48	3,531,905.43

TABLE 2 – COUNTY HEALTH STATISTICS				
	Little River County	Miller County	Sevier County	Hempstead County
AVAILABLE CLINICIANS⁷				
<i>Primary Care Physicians</i>	5	36	8	12
<i>Pediatricians</i>	1	4	2	3
<i>Dentists</i>	3	13	4	5
<i>APRNs</i>	11	39	21	18
<i>Pharmacists</i>	6	30	14	14
HEALTH INDICATORS⁸				
<i>Life Expectancy</i>	73.3 years	75.0 years	76.1 years	76.3 years
<i>Current Adult Smokers</i>	19.5%	20.7%	21.3%	22.6%
<i>Current Youth Smokers</i>	9.1%	4.6%	N/A	7.1%
<i>Low Birth Weight Babies</i>	8.4%	9.5%	5.6%	9.7%
<i>Adults 65+ who have had all their natural teeth extracted</i>	18.7%	26.1%	29.0%	30.0%
<i>Adequate Fluoridation</i>	25%	25.0%	16.7%	50.0%
<i>Average Infant Mortality Incidents Per Year</i>	1	11	6	5
<i>Average Number of Teen Births Per Year</i>	16	67	37	46
INJURIES⁹				
<i>Injury Related Discharges</i>	87	149	171	279
<i>Unintentional Fall Discharges</i>	24	33	62	80
<i>MVA Discharges</i>	21	33	34	49
<i>Traumatic Brain Injury Discharges</i>	10	10	3	12
<i>Deaths from Injury</i>	11	29	13	20
HEALTH RISKS¹⁰				
<i>Food Insecurity</i>	18.9%	20.4%	12.5%	20.5%
<i>Physical Inactivity</i>	36.0%	24.4%	39.9%	36.3%

⁷ “2020 Manpower Report.” Arkansas Department of Health.
https://www.healthy.arkansas.gov/images/uploads/pdf/Manpower_Report_2020.pdf

⁸ County Health Fact Sheets, Arkansas Department of Health.
https://www.healthy.arkansas.gov/images/uploads/pdf/little_river.pdf;
<https://www.healthy.arkansas.gov/images/uploads/pdf/miller.pdf>;
<https://www.healthy.arkansas.gov/images/uploads/pdf/sevier.pdf>;
<https://www.healthy.arkansas.gov/images/uploads/pdf/hempstead.pdf>.

⁹ Id.

¹⁰ Id.

<i>Adult Obesity</i>	37.8%	46.7%	32.8%	37.0%
<i>Overweight Adults</i>	30.5%	26.9%	36.0%	35.1%
<i>Youth Obesity</i>	24.6%	21.3%	29.4%	27.8%
<i>Overweight Youth</i>	15.1%	17.5%	16.6%	17.7%
<i>Low Health Literacy</i>	39.8%	36.5%	44.1%	43.8%
<i>Youth Substance Abuse</i>	9.2%	10.6%	N/A	15.4%

TABLE 3 – BRFSS COUNTY ESTIMATES				
	Little River County	Miller County	Sevier County	Hempstead County
<i>COUNTY SPECIFIC HEALTH OUTCOMES (2019 DATA)¹¹</i>				
<i>Arthritis</i>	35.8%	45.9%	29.9%	36.3%
<i>Asthma</i>	4.8%	4.8%	6.7%	8.0%
<i>Binge Drinking</i>	7.0%	8.5%	2.5%	10.2%
<i>Blind/Serious Difficulties with Vision, Even With Glasses</i>	8.6%	6.9%	11.4%	8.7%
<i>Have Had a Check-Up Within Two Years</i>	92.6%	94.4%	86.9%	93.5%
<i>COPD</i>	10.6%	7.4%	11.3%	13.0%
<i>Heart Disease</i>	7.4%	10.6%	6.4%	7.0%
<i>Deaf or Have Serious Difficulty Hearing</i>	13.4%	11.9%	10.8%	13.3%
<i>Dental Visit Within One Year</i>	45.2%	47.6%	45.4%	48.9%
<i>Depression</i>	24.5%	25.0%	25.2%	25.1%
<i>Diabetes</i>	22.9%	21.8%	21.8%	21.8%
<i>Difficulty Dressing or Bathing</i>	6.0%	5.9%	6.3%	6.9%
<i>Difficulty Walking-Climbing Stairs</i>	22.1%	23.1%	21.5%	27.1%
<i>Received Flu Shot within the Past Year</i>	49.4%	69.7%	51.2%	66.6%
<i>Other Types of Cancer</i>	11.5%	15.8%	8.0%	11.2%
<i>Medical Costs (Report They Cannot Afford to See a Doctor)</i>	13.1%	12.4%	13.4%	15.7%
<i>Adults 65+ Who Have Not Had Pneumonia Vaccination</i>	76.6%	82.5%	62.5%	78.3%
<i>Skin Cancer</i>	9.4%	7.6%	11.5%	8.4%
<i>Stroke</i>	5.8%	3.8%	7.8%	4.1%

¹¹ BRFSS Estimates, Arkansas Department of Health. <https://www.healthy.arkansas.gov/programs-services/topics/brfss-county-estimates>

APPENDIX B – SAMPLE SURVEY

KEY INFORMANT INTERVIEW

Community Health Needs Assessment for Little River County

Name:

Title:

Agency/Organization:

of years living in County:

of years in current position:

Introduction: Hello, my name is [interviewer's name]. I am working with Little River Memorial Hospital on its 2022 Community Health Needs Assessment. Little River Memorial Hospital is gathering local data as part of developing a plan to improve health and quality of life in Little River County. Community input is essential to this process.

You have been selected for a key informant interview because of your knowledge, insight, and familiarity with the community. We anticipate the interview will take approximately 30 minutes. Please keep in mind that while the overall themes that emerge from these interviews will be summarized and made available to the public, each individual interview will be kept strictly confidential.

As you consider the question I'll ask you, please keep in mind the broad definition of health adopted by the World Health Organization: "Health is a state of complete physical, mental and social well-being and not merely the absence of disease or infirmity." Feel free to think of the community's health needs broadly when sharing your perspectives.

Questions:

1. Please tell me a little about yourself, including your occupation and your role in the community.
2. What do you think are your community's strongest assets?
3. In general, how would you rate health and quality of life in the community?

4. In your opinion, has health and quality of life in the community improved, stayed the same or declined over the past few years? Why?
5. What do you think are the most significant health care needs in Little River County today?
6. What health care needs are not being met in your community today?
 - a. What are the mental or behavioral health care needs in your community? Do you feel these needs are being met?
7. What do you think could be done to better address the health care needs of the people in your community?
8. What health care needs does Little River Memorial Hospital need to address?
9. Do you think people in your community are fully aware of the local healthcare services that are available to them? If not, why not?
10. What services, other than specialties, do you think Little River Memorial should offer?
11. Do you have a local physician?
12. For what services are residents being referred out of town?
13. What population(s) do you think is underserved?
14. Have you or someone you know had difficulty obtaining health care services in the past few years?
 - a. If yes, what were the challenges preventing you, or the people you know, from getting the health care services needed?
 - b. Did it have to do with access to a physician?
15. What do you think prevents patients from getting the health care they need?
16. After everything we have discussed, what do you see as the three most critical health issues in your community?

17. Is there someone that you would recommend we speak to who may have useful input for this assessment?

18. Do you have any other comments you would like us to consider?

Thanks so much for sharing your concerns and perspectives on these issues. As a reminder, summary results will be made available by Little River Memorial Hospital and used to develop a community-wide health improvement plan. Should you have any questions, please feel free to contact at Little River Memorial Hospital. Thank you again for your participation.