

BLUESKIN NEWS

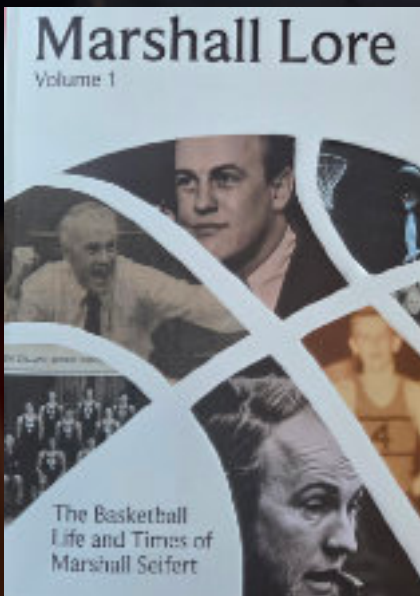
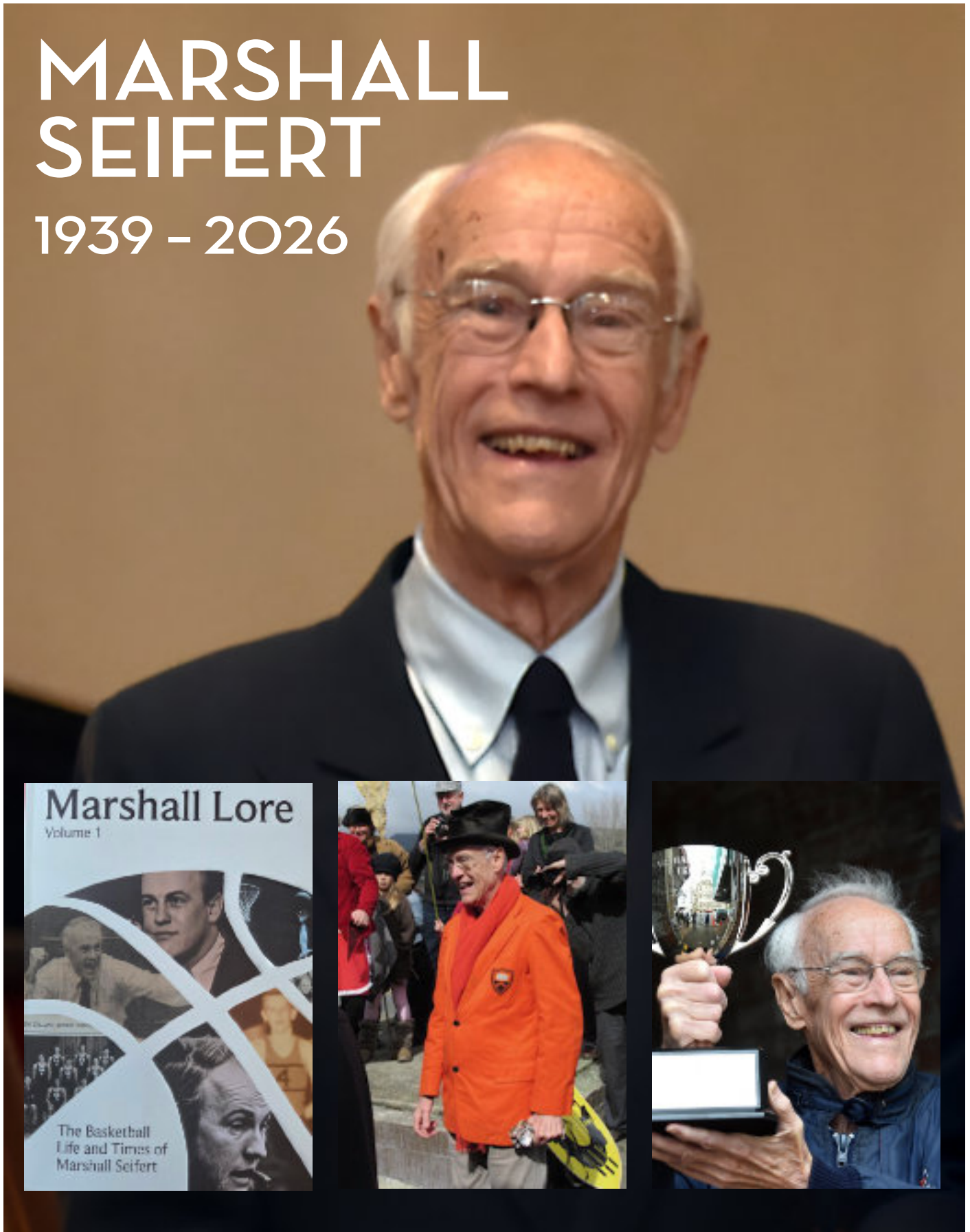
COMMUNITY NEWSLETTER Est. 1985

JUNE 2026

Seacliff • Warrington • Evansdale • Waitati • Doctors Point • Pūrākaunui

MARSHALL SEIFERT

1939 - 2026



Marshall Seifert RIP

Marshall was born in Melbourne on 22nd May 1939. His father had started a silk mill in the mid 1930s to create parachutes subsequently used in the war years. He had two siblings, an older brother Miles and a younger sister Sunny. His mother Elizabeth Parr known as Betty – was third generation Kiwi. Her father James Parr was a Mayor of Auckland and a Minister of Education.

In 1945 when Marshall was 6 years old, they moved to New York. He was very smart and excelled in sports. However, he did not enjoy school, although always a charismatic leader, often Captain of the sports team. He attended the University of Vermont while his brother went to Princeton. One of his first jobs was at the Waldorf Astoria Hotel in New York making cocktails. He also seasonally worked at the World's Fair.

Touring Europe with his best mate Jeff, they stopped in Copenhagen. He met Anna Lise on a Monday night, 22 of September 1966, it was an instant connection. They were engaged within 3 days (how romantic!). A whirlwind visit to his family to attend his sister's wedding, then back to meet her parents. It was the beginning of a life partnership. They were a good fit and would spend the next 58 years together.

After meeting a Canterbury shearer in Europe, Neil Manson, they struck up an unlikely friendship, and travelled the UK and Ireland together. Marshall first came to Aotearoa to visit Neil who was managing a farm in Wainui Banks Peninsula, it was a bonus he played cricket!

In his words -

"I visited him in 1963 and made the decision then if I ever bred, I would come here. I met my wife not long after in her hometown of Copenhagen. We married in 1967 and returned to Christchurch until she finished medical school.

"Anna Lise got a job as a psychiatrist at Cherry Farm and we bought a house on Brown Street in 1968. I found work in broadcasting; it lasted about three years and then I gained a position as a recreation officer at Orokonui.

"For many years I was also a house husband or stay at home dad until the girls started school. I involved myself with the Globe Theatre as a committee member, also acting and directing, this got me started on concerts. I think I did six capping shows, three or four hospital reviews and a fundraising event - 'Once a year day' concert (named for the famous song in the *Pajama Game*) it proved so popular it was live broadcast on National radio for 6 years, the cast of which were all from local institutions."

A national documentary called 'The proper place in society' covered some of this time and the travelling musical group.'

Marshall was a member of the Southern Sinfonia board for 12 years. In 2009 he put together a concert celebrating the life and works of Frances Hodgkins. The first half covered the countries she had worked in, and the second half was visual of her works. Anthony Ritchie was the composer, it was scripted by Catherine Chidgey, and Rima Te Wiata played the part of Frances.

Marshall was a TV celebrity - working as a softball and basketball commentator for 20 years and starring alongside Cherry Raymond and Trevor Plumbly in the popular 1980s TV series 'Antiques for Love or Money'.



From 1981 to 1996 Marshall celebrated emerging New Zealand artists through his self-named gallery on Dowling Street (now Brett McDowell Gallery). His gallery hosted many significant exhibitions.

He recently launched the first volume of his memoirs, Marshall Lore, which focuses on his basketball career, with a second volume planned regarding the art world.

Marshall was a towering figure in Otago basketball, recently honoured with the Murray McMahan Award (2025) for outstanding service to men's basketball.

He began as a player for the Otago men's team in the late 1960s and transitioned to coaching in the early 70s, leading teams for Otago, New Zealand University, and the New Zealand Junior Men's.

He was a well-known TV and radio commentator for the Rheineck NZ Basketball League in the 1980s and 90s, winning a Mobil Radio Award in 1993 for his work with 4ZB.

He is credited with encouraging many players to move south to study at the University of Otago School of Physical Education while playing high-level basketball.

His fondest Waitati memory - The experience of having New Zealand's pre-eminent potter Barry Brickell arrive by train to be greeted as if he was royalty. It was coincidentally his daughter, Nina's 40th birthday. A group of Waitati Militia representatives assembled at very short notice to create a spectacle that impressed Barry so much he frequently spoke about it. Barry totally loved it, the songs, banter and general raucousness.

Marshall and whanau lived in Waitati all this time. He believed the community was special and that someone would write a story about the place, 'A Microcosm of Logic'. He coined the phrase "Waitati, why not!?" When he came here, he found his place in the world.

He was a unique and interesting person, a real character. A community identity and advocate for Otago, a coach, a mentor and a storyteller. He appreciated a good cigar, he was a raconteur, and an enabler. A wearer of hats, a lover of sports, music and art.

Father to Nina and Leah, husband of Anna Lise, grandfather to Isla and Seb, brother to Sunny and the late Miles, friend, mentor and inspiration to many.

Kua hinga te tōtara i Te Waonui-a-Tāne
A totora in the mighty forest of Tane has fallen.

A celebration of his life will be held at 2pm on 13 June at The Dunedin Club, 33 Melville Street, Central Dunedin.

Editor's Note

The Unbelievable Truth

A bit of weird and wonderful this month. I have recently been listening to The Unbelievable Truth, a BBC comedy panel game. Hosted by David Mitchell, each panel member tries to smuggle unbelievable truths amidst equally unbelievable lies in a short lecture. The rest of the panel tries to sort out what is true and what is a lie. It makes for great listening as well as being a source of the sort of weird facts which I love collecting! So here are a few new facts for you:

Octopuses or Octopodes (not Octopi) have 9 brains, one main brain in their head and eight mini-brains one in each of their arms. They also have 3 hearts and blue blood.

You can't fold a piece of A4 paper more than eight times. Try it!

The average cumulus cloud can weigh up to a million pounds. That's heavier than a Boeing 747 completely full of cargo and passengers.

In a group of 23 people, there's more than a 50% chance that two of them share a birthday. With a group of 57 people, there's a 99.01% probability. September 9 is the most common birthday.

There are 52! (that's $52 \times 51 \times 50 \times \dots \times 1$) ways to arrange the cards in a standard playing card deck. That is a bigger number than the amount of atoms in the Milky Way galaxy.

There are more microorganisms in a single teaspoon of soil than there are people on the planet.

Beer is twice as fizzy as Champagne, one flute of Champagne produces about 1 million bubbles but a half-pint of beer can create up to 2 million.

Well, you know now more than you did before reading this!

Keep safe, warm and well Bernie

Blueskin News and Distribution

The Blueskin News is a wonderful publication enjoyed by both locals and visitors to Blueskin Bay. But, as everyone is aware, costs are rising.

Unfortunately, although we have wonderful advertisers whose support we cannot do without, our funds are dwindling and the Committee is keen to encourage readers to check out the "News" online at www.blueskinnews.org.nz. Here you can read each issue is full colour, back issues are also available. Local community Facebook pages also have copies to download.

We are also looking at ceasing rural delivery to individuals from August. The "News" is available to collect from Blueskin, Port Chalmers and Waikouaiti libraries, Warrington Mailboxes, Waitati On the Spot, The Gallery and Waitati Merchants. A small number are also available from Beano's and the Heritage Centre in Waikouaiti, the shop in Karitane, Arc Brewery, Orokonui Ecosanctuary and Pūrākaunui.

So please check out our digital editions and send any feedback to blueskin.input@gmail.com

Clare Brown, Treasurer

Blueskin Bay Community Spaces

Warrington Hall

Available for birthdays, family gatherings, exercise classes, dances and dos etc, at reasonable rates. Hire includes a fully equipped kitchen and tables and chairs – we have a large viewing screen and a new sound system.

Contact Lyn 482 2896 or Rowena 482 2667

Waitati Hall

Suitable for large meetings, weddings, parties, concerts, dances etc (up to 120) features kitchen, toilets, stage, sound system and large projection screen.

Contact Blueskin Nurseries on 482 2828

Waitati Hall Meeting Room

Suitable for committee meetings, small gatherings, demonstrations etc (up to 20 people) features kitchen and toilets.

Contact Blueskin Nurseries on 482 2828

Blueskin Bay Library Meeting Room

Suitable for committee meetings, presentations, training, interviews etc. (up to 12 people) features modular tables, large projection screen, kitchenette and toilets.

Contact Blueskin Library 482 2444, blucirc1@dcc.govt.nz

Waiputai Hub – Stephenson St, Warrington

Warm and cosy meeting space, community gatherings, classes, children's parties, and workshops for up to 20 people. Features include small kitchen, comfy couches, tables and chairs, fenced grounds including playground for under 5s and toilets. Available to hire for workshops, courses, children's parties or family events etc. at a reasonable hourly rate. **Booking enquiries to waiputai@gmail.com or Nancy 482 1198 or 021 171 0226.**

Hire charge is usually applicable, details on request.

Celebration
'Te Waipounamu celebrating Puanga'
Bringing the community together



SAVE THE DATE
FRIDAY 3RD JULY
5-8pm

A community gathering- market stalls, food, entertainment & local businesses will be open

EVERYONE IS WELCOME TO JOIN US
If you would like to be involved either with a market stall, entertainment or a food vendor

John Karetai

Tuesday, 13 June 1840 was a very important day for Dunedin.

On this day, the Treaty of Waitangi was signed just inside the entrance to Otago Harbour, in front of Pukekura (Tairaroa Head), by my ancestor John Karetai.

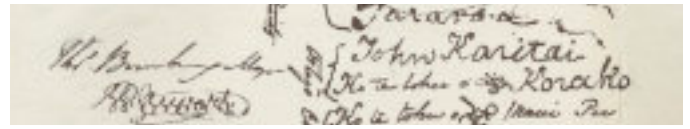
The Treaty is a unique document – an agreement between the British Crown and Māori. At the time of signing, Karetai had witnessed many major changes in his lifetime. As a principal rangatira, he had seen many of his people die due to a lack of immunity to introduced diseases such as measles, influenza, smallpox, and cholera. At that time, there was also a widespread belief that Māori were a dying race.

I believe his wish for his children and grandchildren was that they would be prominent participants in community life. After all, tino rangatiratanga was promised in the Treaty.

In 1860, Karetai died and was buried in the urupā behind Ōtākou Marae. His headstone reads, "His conduct to the people of the Māori and European races was kind & liberal", which I believe shows that his wish for his descendants was that Māori and Pākehā adapt to each other.

Many of his family members are still hopeful that his land confiscated at Pukekura will one day be returned to us.

Gisele



Mere Karetai, Gisele's grandmother

Blueskin Playcentre

Kia ora Blueskin Bay. Firstly, we would like to send out a huge thank you to Knitting Communities Together for their very appreciated and much-loved woolly donations for the young children who attend Blueskin Playcentre. There are very few jerseys left as everyone has enjoyed rummaging and picking their favorite items and now look snuggly, warm, and tremendously well-dressed. Thank you!

In other news, we have our Korowai blessing coming up on the 8 June. We'll be having a small kōrero along with singing at Waitati Kura led by Antony Deaker. Antony has very kindly been volunteering his time to impart his knowledge to Blueskin Playcentre whānau about the cultural significance of the Korowai, thank you Antony. Following this, Blueskin Playcentre and Waitati Kura will be providing some light refreshments to honour the occasion. More information will be released on our Facebook page for those who are interested to read more

As always, a reminder that we're open on Mondays, Tuesdays, and Wednesdays with the recently extended opening times of 8:45 - 12:30. We've had a few new visitors recently, and it's been delightful to meet you all. Blueskin Playcentre is situated at the end of the shared drive with Waitati Kura; there's an outside and an inside play area, free coffee, a fully-trained Early Childhood Educator, as well as friendly, welcoming families. We'd love to see you there!

All the best, Heather



BLUESKIN COMMUNITY MARKET

Sunday 7 June



We love our beach

What a joy it is to see so many people enjoying these golden autumn days on the beach; walking the family dog, children playing at the water's edge and our world famous surfing family out 'doing it' almost every day of the year. Having lived here for 40 years plus, I recall my children saying there was "someone on their beach!" So seldom were others out enjoying this beautiful coastal paradise. Today, our residents treasure the beach as a shared happy space.

Warrington is also home to unique wildlife and as residents know, DCC has acted to help in protection. A huge shout-out to dog walkers who advise visitors that the "gap" (now hard to discern) is as far as dogs can walk – about two thirds of the way down the beach, before they must turn back to protect the roosting Tōrea at the end of the spit. Thank you to our wonderful dog-owning residents for spreading the word. The sign in the carpark is a beauty, but not always noted by visitors.

A hardy group of volunteer residents maintain a trapline to reduce stoat predation on ground-nesting birds and to prevent possums grazing on the massive plantings in the sand hills of the spit. DCC has again stepped in to help with a dogs-on-leads rule for animals in the sandhills and on the tracks. Pets can still run free on the wet sand.

There are 22 traps on the spit. Stoats are crafty and spot the traps. After a couple of years they habituate and may enter the traps. We do catch a few stoats and ferrets, but not of late. Unfortunately we have off-lead dogs visiting these traps in the sandhills, leaving their scent, and having a bit of a wee and putting the program back by two years every time. Off-lead dogs are mauling the fresh possum bodies hanging from traps in the sandhills.

We love our dogs, we love our wildlife, we love our beach. Thank you for reminding visitors that there is room for all – for birds, for native plantings and for pets on the wet.

BLUESKIN GARDEN CLUB

Well the frosts are here, and with their arrival we need to think about our vulnerable plants. I have put frost cloth over my lemon tree, my Pōhutukawa, my Avocados and my Swan plants.

I haven't had much success with overwintering Swan plants so I hope this year will be different. However, we have been more successful with establishing Monarch Butterflies in the Bay. Many local people have been actively raising Monarchs this year, and it's the first year that I have had butterflies return and lay on my plants, which was always the original goal.

Garden club's AGM was held this week at the Blueskin Nursery's little church venue. After the official part of the meeting we enjoyed a tasty meal and dessert, ably prepared by the cafe cooks followed by Lyne testing our garden related knowledge by giving us a quiz, with some quite difficult questions!

Our meeting for June is going to be a crafty get together with members bringing their own lunch. This will be held at the Warrington Hall.

New members are always welcome.

Bev Lyon (027 533 2238)



Madness vs Sanity





Art of the Lie

It's hard to determine who lies the most these days. Everyone's doing it. Lying is big business. Mis-dis-false information. Fake news, deep fakes, propaganda, exaggeration, stereotyping, etc. While none are particularly new, their scale and method are. Since the advent of print media, to AI-powered internet today, the 'art of the lie' (increasingly disguised as opinion), has become pervasive, weaponised, and dangerous.

To help rein things in, our Government has decided to disband the Broadcasting Standards Authority (BSA), and replace it with 'self-regulation'. So, rather than a re-boot, the BSA has been booted.

Therefore, and henceforth, standards of broadcasting will be determined by another bunch of BSAs: Bull S**t Artists.

And, unfortunately, it's not just Bull. There's also Bad. Nasty. Harmful. Hateful. Violent... S**t has many adjectives. It also has a multitude of purveyors and an audience who lap it up. Unsurprisingly, Media Minister Paul Goldsmith (who can't have bothered with any psychology papers at Uni), believes the 'audience' will regulate what is broadcast. He reckons; if someone broadcasts S**t, the market will determine their fate. Ahhhh... the miracle-making market. Capitalism's irrepressible cure-all.

When asked if this was a cost-saving exercise, the minister's pause spoke volumes. And anyway, he's hoping for a double whammy; \$1.7M clawed back, and votes. He's betting that accuracy, balance, and fairness, won't win the upcoming election: Bull S**t will. Instead of giving the BSA shiny new teeth to defend the 'audience', he's letting the dog off the leash. Try not to get bitten.

Doug Nuttall

Bare arsed lime envy

I was walking the dogs with a friend a few days ago, talking about gardening, as you do when you are as obsessed with food growing, as we both are. She had seen my super healthy and abundant lemon trees and told me about her productive lime tree growing outside at St Clair! Gob-smacked is how I was after this disclosure. Has anyone noticed how competitive I can be? Well, I immediately had to get a lime tree.



The variety to grow down here is called Bears (bear ass/bare arse— not an easy name to forget), but it is also known more elegantly as Tahitian or Persian Lime. It is a cross between a Key Lime and a lemon, and is the most common type of lime fruit available in shops.

I had to immediately jump in the car (don't worry it's an EV, I'm not wasting precious fuel on a whim) and go off to Dunedin to buy my new lime tree and some citrus potting mix.

There were cute little lime trees at an affordable price, one of which I put straight in the trolley, before slowing down long enough to read the label which stated, "grows to 3m". Oops, that's going to be too big to grow in a pot. There were some much bigger and much more expensive specimens too that were counter-intuitively the dwarf rootstock but were a variety with a maximum height of 2m which is a bit more manageable. So I got Alex, the former orchardist, to select me the nicest shaped wee tree to take home.

Next day I had it potted up in a big plastic pot and installed in our tunnel house to start its new life. I think it will be tender for its first winter, who knows where they cultivate these exotic plants, but I will put it outside next spring where hopefully it can stay thereafter. I may have to drape it in frost cloth on frosty nights though.

My lemon trees really thrive in the same spot; especially since I started watering them with their own little timed dripper irrigation system and using liquid citrus food instead of the granulated stuff which is too strong for potted citrus. It's amazing how much better plants do when you actually look after them.

Another lime tree I have is a kaffir lime. Our neighbour Jenna has one in her glasshouse, and she always offers me some leaves to take home to add an amazing citrus taste to the Asian-style dishes I love to cook. However, it was when she offered me some little kaffir lime fruits that I got my familiar feeling of "I must have one of those plants". The little fruits look like they are going to be dry and lifeless, as they are really small and puckered-looking, but cut them open, and they are really juicy and so tasty added to cooking.

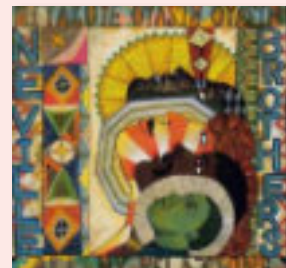
My Kaffir is in a really heavy pot, though, and when I went to move it inside for winter, I realised that it was too much for the sack barrow, and we would bugger our bodies trying to move it into the tunnel house. I got it as far as the covered part of our veranda, so hopefully, it can survive there. I noticed this morning it has a wee lime fruit on it. Awesome. So now I no longer have to be lime green with envy as I have my own lime orchard.

Next thing ... mandarins? Grapefruit? Perhaps a dedicated citrus tunnel house?

Hilary Rowley

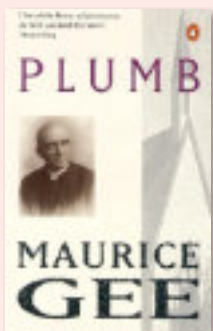
WAITATI BOOK CLUB Ian Melvin

Scott had a better offer, and Ross and I could not link up because of Blueskin Road being closed, so I set off in the truck on my own, with the stereo cranked up to **The Neville Brothers' 'Mitakuye Oyasin Oyasin/All My Relations'** album, where Aaron Neville does a brilliant version of 'Aint No Sunshine' including an amazing sax solo that seems to go on forever. Arriving at Peter's early, I find some of the crew already ensconced, and soon Ross and Marc complete the numbers and we get down to business. Before we conclude, Scott and Jenna arrive to finish the evening off together.



THE BOOK

Plumb: Maurice Gee. Regarded by some as one of our finest novels and first in a trilogy. Plumb, Meg, and Sole Survivor. The story of a Presbyterian reformist minister, strongly influenced by socialism, and frustrated by the traditionalist religious views of his church. The story is of his life and his family, and an accurate immersion into the life and times of New Zealanders from the 1890s to 1949. Based on Gee's grandfather, a Presbyterian minister, who was tried for heresy by his church, and for sedition by the state. We all concurred: this is in fact a classic Kiwi novel and a brilliant read. Highly recommended.



OTHER BOOKS

The Sound of Butterflies: Rachael King. "In 1904, the young lepidopterist, Thomas Edgar, arrives home from a collecting expedition in the Amazon. His young wife, Sophie, is unprepared for his emaciated state, and even worse, his inability or unwillingness to speak!" (cover blurb). This book is dedicated to her father, historian and writer, Michael King. Winning best first novel at the 2007 Montana Book Awards, this engaging, interesting, and well-written delve into the times and society of '1904' keeps you guessing along the way. Recommended.



BEER AND PORT

Beer: Tripel Karmeliet sampled at The Karitane Store and Kitchen is the favourite beer of Sebastian, the proprietor. Brewed using a three-grain recipe rediscovered from the 1699 Carmelite Monastery, it is simply delicious. "Tripel Karmeliet is een bekend 3-granenbier dat nog steeds wordt gebrouwen volgens een authentiek 17e-eeuws recept van het oude Dendermondse Karmelietenklooster" (Carrefour Belgium)



Port: Tannacrieff Wines, Bannockburn The White Heron Port 2024. Sampled at our meeting, provided by our kind host Peter. A wonderful finish to a fine evening with pear and blue cheese. Winemaker Debra Cruikshank, made from Central Otago Pinot Gris grapes.

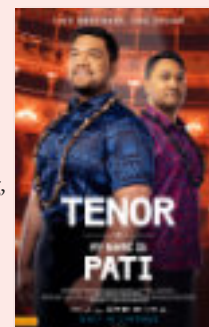
MUSIC

Tom Waits: Big Time. A recent find in a bargain bin, a live album and a very good one. Standout tracks: Way Down In The Hole; Strange Weather. Certainly not my favourite Tom Waits album, that might be Swordfish Trombones, or more probably One From The Heart with Crystal Gayle. Try Broken Bicycles or Take Me Home (with Crystal Gayle) or my all-time favourite song, Rosie, on YouTube.



OTHER STUFF – FILM

Tenor: My Name Is Pati. The story of Pene Pati and his brother Amitai, Pati's journey from Samoa to platinum success in the trio, Sol 3 Mio, and the world's great opera stages. A moving, uplifting, inspiring, poignant, often hilarious story. Incredible music that at times is so good it's almost overwhelming.



WORD OF THE MONTH

Values: "Under a Labour Government there would be, I guessed, two or three years of reform of a half-baked kind, and then would come the old cry that economic realities must be faced. And the new order would change its shape to the old."

[**Plumb: Maurice Gee**]

MEANING OF LIFE

"The dream of a utopia in the southern seas, of God's Own Country, had never been more than that: a dream. Holes had been shot in it before the depression. But in the depression, it had rusted like an old tin can, it fell to pieces. All we had left was human kindness. Without it we would have become a nation of beasts." [**Plumb: Maurice Gee**]



To amalgamate or not to amalgamate?

That is the question you will not be asked! The Government has imposed a three-month deadline on all local bodies to find a buddy or two and do a deal. This excludes Regional Councils which have already been told they are for the chop. There is no suggestion that councils should consult their residents and with such a short timeframe this would be nearly impossible.

Do you remember when Auckland was made up of a number of cities? The government of the time suggested one mega city would be a better idea. There was consultation along with a big sales campaign. Rates will go down, managing the city will be more efficient and fewer staff will be required they were told. Turned out this was a fib, Aucklanders got sucked in, their rates continued to rise and they now employ a lot more staff.

Back to our current situation, what are my concerns? Firstly, bigger councils mean those in charge are even more distanced from local communities and their issues. Initially they will be preoccupied by the reorganization and establishing many new roles. Each of these enlarged new councils will assume the role that the regional council used to do in their area.

Certain things that we value about Dunedin may well be watered down or lost in an enlarged council, such as protection of our natural environment and wildlife.

Who are we likely to amalgamate with? It has to be a neighbour or two. Our closest Neighbours are Clutha and Waitaki, both have low populations and large rural hinterlands. This means they have huge kilometres of rural roads needing maintenance, multiple water schemes to bring up to standard and very few people to pay for them. Will joining with either or both of them help Dunedin's finances?



Definitely not, what is at risk? Our local pools, libraries, and parks and a further deterioration of basic maintenance of our roads and footpaths.

Presently the ORC manages the large Otago rivers, the complete catchment from mountain to sea, ecologically this makes sense. The new enlarged councils could well see a split in the catchments of the Clutha and Waitaki, which risks different rules about water quality and water takes being imposed on different parts of these river systems. This may not result good environmental outcomes for these rivers. What can you do? Contact your local MP, and DCC councillors and let them know you want to be consulted.

Geraldine Tait

A bit about the Waiputai Hub

The Waiputai Hub at 10 Stephenson Street in Warrington continues to serve as a steady anchor for the Blueskin Bay community, hosting a diverse rotation of weekly activities through donations, Waikouaiti Coast Community Board Grants, and a Lottery Community Grant. The Hub is currently a regular home for Blueskin Bay orchestra rehearsals, home school group sessions, and local ping pong games.



The space also functions as a venue for specialised interests and creative pursuits. For example, local poet Richard Reeve convenes evening poetry readings; the Hub's rooms are currently hosting drawing classes; and Roseanna O'Neill is offering music lessons. For those seeking technical help, the popular free digital clinics provide one-on-one tuition during their quarterly sessions.

Beyond creative events, the Hub is a practical place for local committees and social groups to meet. So, if you are interested in starting up a group, want to offer a workshop, or have other ideas for activities at the Hub, please get in touch. We may be able to help.

Looking ahead, the Hub will introduce Wednesday evening te reo Māori practice sessions starting after Matariki. These gatherings are designed for those who have already learned the language and wish to maintain their fluency in a social setting. We hope to also offer some weaving classes.

Further details on the te reo Māori evenings and other Hub events will be posted on social media, in the Blueskin News, and on local noticeboards.

Ngā mihi ki a koe, Waiputai Trust Committee

**ONECOAST
RESOURCE RECOVERY**

OneCoast AGM

**Thursday 16 July | 6pm,
St John's Church Hall, 94 Beach S**

A light supper will be served.

Nominations are invited for office bearers and committee members for OneCoast Resource Recovery. We would love to have some new recruits for our committee who work behind the scenes to keep OneCoast running smoothly and expanding. If you appreciate the work we do, if you have ideas for making it better, if you are new to the area and would like to get involved in a worthwhile community enterprise, please contact us at chair@onecoast.org or phone 021 130 7765 to find out more.

You are also welcome to attend our June committee meeting or chat to us at the OneCoast Hub at the Waikouaiti Transfer Station when we are open. We look forward to hearing from you.

East Otago Plunket Round Up



The East Otago Playgroup in Waikouaiti runs weekly on Wednesdays between 10.00 and 12.00 at the Plunket Rooms in the East Otago Events Centre, providing the opportunity to connect with other parents and caregivers and to give your child a chance to socialise, play and build connections with other children. You don't need to be a Plunket client to come along! A number of families regularly travel over from Blueskin Bay to join this friendly and welcoming group. It's free to join – just come along on the day.

Did you know that Plunket has a secret army of volunteer knitters? Lots of wonderful groups and people knit woollen clothes and donate them to Plunket to distribute. In the Dunedin area we are very grateful in particular to the Kiwi Family Trust for supplying us with many beautiful knitted garments. As well as little singlets, hats and booties that are distributed to parents with new babies, Plunket also receives these items and more such as cardigans and jerseys in larger sizes. In addition, in East Otago we have loads of second-hand woollies in our clothing bank. Would you or someone you know benefit from some free woollies for your under five? If so just get in touch with Annabel, your local Plunket Community Services Co-ordinator (027 229 1608/ annabel.kuzma@plunket.org.nz). If you want to donate any outgrown woollens that could be worn by someone else please get in touch too!

If your child needs a Plunket appointment, or for any other clinical enquiries please call 0800 184 803.

Annabel

Public invited to have their say on local government reform

Dunedin (Wednesday, 27 May 2026) – Residents across Ōtepoti Dunedin are encouraged to have their say on the future of local government, Mayor of Dunedin Sophie Barker says.

“The government is planning to introduce significant changes to the local government sector, but before they do we all have an opportunity to have our say.

“I encourage everyone to do just that and let us know what matters most to you in local government – what’s working, what’s not, and what you want the future to look like,” Mayor Barker says.

In Otago, councils have been considering recent government announcements on local government reform through the Otago Mayoral Forum.

Forum members have decided to initiate a short period of public engagement to help determine next steps, beginning with a short

THE RANT

Dean Griffiths



This is an opinion piece designed to promote feedback. If you feel you'd like to respond email blueskin.input@gmail.com

WHAT MAKES ME MAD:

Uncontrolled dogs and their owners. In recent weeks I have been charged/jumped by several unleashed dogs at doctors point beach and on the estuary track. And some owners laugh it off like its nothing. But lets be clear, I don't know your dog, and I don't know if its friendly. To me its an unpredictable animal running at me, at speed, jumping, growling.

For myself and probably others, it can be triggering, and for some traumatic. I recall childhood memories of seeing a neighbour's kid, brutally attacked by a roaming dog, my dad beating it off with a wooden stake, blood, screams, the ambulance, his scars. And the owners, they were shocked, as their dog was usually friendly. Please control your dog, for the sake of others, for the animal itself, and for the sake of our precious native wildlife (thinking of the recent mass death of penguins at Long beach).

WHAT MAKES ME SAD:

Voter apathy. Vote, vote, vote!

WHAT MAKES ME GLAD:

Empathy, compassion, love, friendships, sunsets, birdsong, a rare mushroom find, dad jokes, a decent coffee, documentaries, local music, the botans, ping pong at the hall, op shopping finds, our community, avocados on toast, cat videos, a good stout, an almost pain free day, random conversations, acts of kindness, speaking up for what is right, standing with others against genocide, and the demise of facism, hopefully...



survey which is live from Wednesday 27 May until Sunday 14 June.

The survey can be found here: www.otagomayors.org.nz

“We want as many people as possible to complete the survey so we have a better understanding of what our communities want the future of local government to look like, here in Ōtepoti Dunedin and across Otago,” Ms Barker says.

“We are working closely with our neighbouring councils to consider a proposal that works for our communities. The issues are complex, but this is also an opportunity to look at how we can best shape the future for the communities we all serve.”

The survey results will be analysed before being reported back to the Otago Mayoral Forum and member councils in late June, and will help inform future public engagement on specific scenarios, options or models for local government in Otago.



Kia ora koutou from Te Kura o Ōkahau,

There is a real calm feeling around the school currently, with crisp, cold, clear mornings leading to fine, warm early-winter days. We've had 5 weeks of really settled, focused learning in the classrooms, with the tamariki having trips to the museum to learn more about Ancient Egypt, and to Moana Pool, where senior children continue to improve their swimming technique and fitness, ready for the next surfing season in Term 4.

As seasons shift, the way we interact with our school environment changes, too. Days of surfing at Warrington beach and swimming in the new pool are put to rest for the winter terms. Instead of zooming around on bikes at lunchtime, our tamariki are making piles of autumn leaves to jump into and picking up their hockey sticks. The classrooms reflect this change as we turn toward learning about our family connections to ANZAC Day and writing about falling leaves.

We also think a lot about keeping warm and dry when Tāwhirimātea, the atua of wind, gets worked up, and Rānginui,

the sky father, cries for his partner Papatūānuku. This makes it the perfect time of year to focus on the Enviroschools' theme area Energy! This term, our tamariki will learn about renewable energy, learning the science of planet Earth and beyond, which helps us to think creatively about issues like transport and heating, and make informed decisions in our daily lives.

For our youngest tamariki, engaging with the elements by being out in nature in all its seasons is our introduction to this Big Idea. This hands-on connection is the foundation for later academic work and encourages our youngest to see themselves as scientists already. Through play, children already act like researchers: they observe their environment, form hypotheses, run physical experiments, and learn from the results. Let's encourage that natural curiosity!

Earlier this term, four of our senior class took part in the EPro8 Challenge in Dunedin. We are so proud of our tamariki, Staal, Raef, Hamish, and Lochie, for working together with so much passion and determination (even through their holidays) in preparation for the event, where they made it into the final round!

Our Explorers Club (4-year-old transition programme to school) is continuing to rapidly grow, and it's great to see so many new tamariki and families around the school. The Explorers Club runs every 3 weeks on a Friday morning from 9.30 - 11.00 am.

If you require any further details, please contact Lana in the school office. or visit www.warrington.school.nz



Join the Neurodiversity Café: A Welcoming Space for Conversation and Support

Neurodiversity – a concept that encompasses a wide range of cognitive differences such as ADHD, dyslexia and autism – is increasingly identified in both children and adults. To recognise this and support those on the neurodiversity journey, two Neurodiversity Café groups are being set up in Blueskin Bay.

One group is designed for parents of neurodivergent children, while the other is for adults with ADHD.

The initial sessions, taking place later this month at Blueskin Gallery, are designed as gatherings where participants can:

- Ask questions and share experiences
- Share resources and tips
- Build supportive connections with others

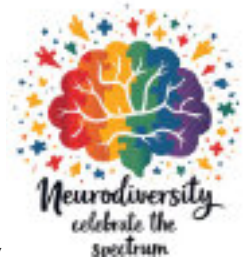
By hosting these groups in a café setting, the facilitators aim to create a warm, welcoming atmosphere, encouraging conversation, community and a sense of belonging. Whether you're looking to gain knowledge, find support or simply connect with others sharing a similar journey, the Neurodiversity Café offers a friendly space to do so. Complimentary tea, plunger coffee and biscuits will be provided (koha welcome).

The first group for parents of neurodivergent children will be held on Tuesday 15 June from 7.30 – 8.30pm.

For adults with ADHD, the first session will be held the following Tuesday 22 June from 7.30pm – 8.30pm.

Both will be held at Blueskin Gallery in Waitati.

Contact Vicky on 022 074 9651 or Amber on 027 476 7388 for further information.



Talent and Time on show at Awards Evening

On the 8th May, Otago and Southland Region Surf Lifesaving held their annual awards. As much of the surf lifesaving community is made up of volunteers, the awards offer time to reflect and offer thanks to those who keep us safe at the beach and who demonstrate sporting excellence as well as providing opportunities for tamariki and the community as a whole.



Warrington came away with a number of awards in a variety of different categories.

Greta Schwefel (Rookie Lifeguard of the year), Nicholas Duncan (Top Competitor U9's), Warrington SLSC (Junior Participation of the Year), Mark Hastie (Coach of the year), Team of Tim Clements, Ken McHoull, Mark Hastie, Michael Hastie (Open Mens Competition Canoe), Team of Karyn Becconsall, Jem McIlroy & Phoebe Ozanne (Women's Taplin), Maaike Duncan (Surf Sports Official of the year), Paul Gager (Event Safety Contribution & Regional Service Award), Naomi Ingram (Regional Service Award), Charlotte Becconsall-Ryan (Distinguished Regional Service Award).

Finally Wayne Fa'asenga was awarded the Presidents Trophy for outstanding contribution. Wayne has been a clubbie since 1986 and played a key role with the new Warrington Lifeguard Building which was opened this year. He's a lifeguard, competitor and official who has given endless hours to the club and the region.

If you would like to know more or get involved with the club, drop us a line at warringtonslscnz@gmail.com



Waikouaiti Coast Community Board

As we head into winter, your Waikouaiti Coast Community Board is showing no signs of slowing down! Our members have been hard at work to present our community plan in time for integration in the DCC's annual plan, reflecting the priorities you have brought to our attention (particularly at the Market Day in Bland Park in May and Sonya Billyard has also had a great initiative going in Waikouaiti to gather community thoughts).

These are some of our focus areas at present:

- Advocating for reticulation of the Waitati area to the future waste water treatment facility (approx. \$100 million earmarked in the 9-year plan) due to replace the existing plants whose resource consents have expired or are due to expire.
- Support for development of the One Coast waste minimisation facility in Waikouaiti, including funding provided recently for the installation of some new lights (the better to see those bargains by!)
- Submission to the Keeping of Animals Bylaw Review. Geraldine Tait wrote a great defence of rural rights to keep bees and roosters. "I believe people in our area have the right to keep and breed animals and as long as they are well cared for. They should be able to do so without the threat of fines and removal of their stock."
- Working with NZTA to gather data to inform the desired implementation of a speed limit at the SH1 turnoff: once we have the data, we hope to get some action.
- Feeding back to DCC, to ensure verges are trimmed, and footpaths and drains are cleared in a timely manner. You should call them directly or use their handy online Fix it Form first, but we can help with follow-up.
- Regular local meetings to progress through the stages to establish CRGs (Community Resilience Groups) and ensure they are properly resourced.
- Planning with local stakeholders towards the Truby King Reserve Opening Day to be held in 2027.
- Representation on the ORC's Dunedin Coastal Catchment Action Group (I will attend our first meeting on 5 June).

Watch out for another update from our Chair in the FYI DCC News, re the half-basketball court in Warrington, exciting news about the Karitane Wharf, and the Waikouaiti Water Treatment plant, nearing completion!

Kā mihi nui,
Anna Knight, Deputy Chair
 020 477 7915
annaknight.wccb@gmail.com

WARRINGTON COMMUNITY MAILBOXES

Over the last few years, the mail delivery system for Warrington that is provided by NZ Post has undergone several changes. The mailboxes have shifted from PO Boxes to CMB's (Community Mail Boxes) with their own postcode 9449. More recently, we have also been asked to use the Waikouaiti postcode, 9471, but to continue referencing the CMB address as well. However, if you go to the NZ Posts own website, the 9449 postcode does not appear as an option!

Over the last year or so, residents have been increasingly receiving mail stamped with 'please inform sender of correct address', often with handwritten amendments. These senders are not old friends or aging relatives who are not getting it right. It is banks, government depts, insurance companies and courier companies that are getting it 'wrong'.

Many drop down menus simply do not accept CMB addresses and require a street address instead. Conversely, the Regional Council and Dunedin district council cannot send rates bills to street addresses when using the CMB address. There are so many ways in which this system is broken.

Hospital appointments have frequently been returned to sender, and VTNZ vehicle registration stickers routinely don't arrive. When my wife died last year, at least 60% of the sympathy cards had been stamped 'wrongly addressed'. (-and these were the ones that somehow managed to arrive!)

Many frustrated Warrington residents now choose to pick up their mail from a PO Box in Waitati or from a workplace address in town. It would be nigh on impossible to run a business from the village because of this dysfunctional system.

After many months of Facebook complaints to each other, and several attempts by individuals to raise the problem with NZ Post directly, it has now been formally taken up as a significant problem by the Community Board who will be approaching NZ post on our behalf.

In the meantime, we need to conduct a community survey to gauge the extent of the problem. Also, to suggest preferred alternatives. Both Karitane to the north and Waitati to the south seem happy with a system where they can choose between mailboxes at the gate or an option to pick up from centralised PO Boxes at the shops. There is no alternative postcode, and no need to specifically reference Waikouaiti as the Waikouaiti postcode alone will suffice.

It has been argued in the past that going to the community mailboxes provides the village with an opportunity to mingle socially. However, it has become a desperately lonely experience in recent years. Rarely is anyone else around and rarely is there any mail! The collective time wasted by us all trudging up to the Hall for no purpose is immense. Far better to pop down one's driveway and see if there's any mail, and maybe even catch up with a neighbour who may be strolling past!

An online survey, designed by Geraldine Tait and conducted by Bernie Cornford, has been created and can be accessed using the following link: www.blueskinnews.org the survey will also be available on local community Facebook pages.

Please do take this opportunity to have your say on the future of our mail delivery service, and how you would like it to be. We will be pleased to hear what problems you have had in order to give the issue more significance, but essentially we want to remain positive and solution focussed to make life easier for both the local posties and for ourselves.

Chris Skellett

17 Hill Rd.CMB14006
Warrington, Waikouaiti 9471

Burn Dry, Breathe Easy

ORC reminds communities to burn dry firewood this winter

Air quality becomes degraded during winter due to the use of wood burners combined with cold calm weather, and the occurrence of inversion layers. ORC is currently running its annual Burn Dry, Breathe Easy campaign, designed to share tips to ensure your firewood is dry for burning in winter. It also highlights the effects that burning wet wood and other items can have on air quality and the environment.

Woodsmoke pollution can be reduced when you burn only dry wood and keep your fire hot and not smouldering. Always make sure the wood you are burning is dry. It's better for you, your home, and the environment.

Burn Dry, Breathe Easy tips:

Stock up on firewood before Christmas to allow it to dry out before the following winter

Stack your firewood off the ground, out of the rain and with plenty of airflow so it dries faster



Use a wood moisture meter to check if your firewood is dry enough to burn. Less than 25% moisture means more heat and reduced smoke

A well-built fire of scrunched up paper/firelighters, kindling, and firewood with plenty of airflow ensures a well-heated home and less smoke

Don't burn wet or green firewood, treated wood or household rubbish like plastics as they can release harmful toxins into the air.

To reduce smoke overnight, make sure you can still see flames when you turn your fire down.

Find out more at orc.govt.nz/burndry

BLUESKIN BAY LIBRARY



28 HARVEY STREET, WAITATI | 03 482 2444 | DUNEDINLIBRARIES.GOVT.NZ
OPEN: MONDAY-FRIDAY, 11AM-1PM AND 2-5.30PM | SATURDAY, 10AM-1PM

COM2TECH

Tuesdays, 11 - 12pm

Advice and learning around purchasing, maintaining and using your digital devices effectively and securely for your lifestyle and capabilities.

BLUESKIN BAY KNITWITS



Mondays, 6.30 - 8.30pm
Tuesdays, 2.30 - 4.30pm

Contact Christine
021 133 9340

All ages and experience levels are welcome.

STORYTIME WITH STEPHANEY

Fridays, 11am (except school holidays)

Introduce your child to the wonderful world of books and language. Visit the Library for half an hour of stories, rhymes, and songs, both old and new. Suitable for pre-school children and their caregivers

CRAFT MORNING

Looking for something to do? Come along and join us for our Adult CRAFT morning sessions. Each month there will be a new project and it is free!

Join our next Craft morning on Wednesday 3 June, 11-12.30pm where we will be making Tī Kōuka. String. Nau mai, haere mai, tautī mai.

TECH HELP 1-2-1



Second Wednesday of the month, 2 - 3pm

Drop in sessions providing 1-2-1 help with a range of tech topics. This month's session is on Wednesday 10 June.

MEET THE NEIGHBOUR

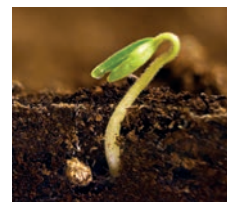
Thursday 18 June, 6 - 7pm

We are delighted to be hosting our neighbour Dylan Norfield who is enthusiastic about securing the future of rare and endangered exotic plants in Aotearoa New Zealand. All welcome to this free event.

BLUESKIN BOOKSHARE

Thursday 25 June, 3.30 - 4.30pm

Join us for tea and a chat about what you're currently reading and get ideas for what to read next. All welcome.



SEED LIBRARY

The Seed Cabinet needs your seeds. Come and grab a packet and get your spring garden underway or drop off your surplus from last year.

COMMUNITY CABINETS

We have a fascinating display from the Waikouaiti Coast Heritage Centre where there are old cameras, photos, and other paraphernalia to pique your interest so pop along and learn more about our local history. There are also albums of old photos of the Blueskin Bay area.

If you have taonga you would like exhibited in the other community cabinet which is situated by the seed library, come and have a chat to the library staff.

DCC SERVICE CENTRE

Open until 5pm weekdays for: dog registrations, Bokashi buckets, parking fines, rates, 75+ parking permits and Bee Cards.

Around the Bay – June Events

BLUESKIN LIBRARY	
Wednesday 3	Craft Morning: 11- 12.30pm Looking for something to do? Come along and join us for our Adult CRAFT morning sessions. Each month there will be a new project and it is free! Our next craft morning we will be making Tī kōuka string. All materials provided.
Wednesday 10	TECH HELP 1-2-1: Second Wednesday of the month, 2-3pm Drop in sessions providing 1-2-1 help with a range of tech topics.
MONDAYS	Blueskin Bay Knitwits: 6.30 – 8.30pm Contact Christine 021 133 9340
TUESDAYS	Blueskin Bay Knitwits: 2.30 – 4.30pm Contact Christine 021 133 9340
TUESDAYS	FREE Community Digital Dropins: 11am – 12.30pm
FRIDAYS	Story Time with Stephaney: 11am

WAIPUTAI HUB	
MONDAYS	Piano Lessons: 4 – 6.30pm. All ages and levels, Roseanna O’Neill, 027 9585 838
TUESDAYS	Homeschoolers: 10am – 2:30pm Contact: Nathan Parker, Email: waiputai@gmail.com for info Ping Pong: 2.30 – 4pm. All ages, levels and drop ins. Contact 022 647 4738. Piano Lessons: 4 – 6.30pm. All ages and levels, Roseanna O’Neill, 027 9585 838
WEDNESDAYS	Focus on Drawing Class, May 6- June 24, 6:30p.m-8:30pm
SUNDAYS	Blueskin Bay Orchestra rehearsal 3 – 5pm. Contact: Emily Sterk Email: waiputai@gmail.com for info

WARRINGTON HALL	
TUESDAYS	Indoor Bowls: 7.30pm
THURSDAYS	Yoga – All levels: 6.30 – 7.30pm Bring your own mat \$10pp Contact: hagino.yoga@gmail.com
SUNDAYS	Waitati Warblers: Singing for joy 4 – 5.30pm Contact: nancymiller140@gmail.com

ARC BREWERY	
SUNDAYS	Live Music: 2 – 5pm Contact 021 4108 1141

ST BARNABAS CHURCH	
SUNDAYS	Service at 10 am

WAITATI HALL	
MONDAYS	Steady As You Go: 1.30pm Age Concern Gentle Yoga: 6 – 7pm Bring your own mat \$10pp Contact: hagino.yoga@gmail.com Table Tennis: 7.30pm til late Contact: Nigel 021 236 2818
TUESDAYS	NIA Dance Class: 11.30am-12.30pm \$10 Contact: Clare Reilly 021 177 5350
WEDNESDAYS	Energetic Yoga Restore & Rejuvenate 6 – 7pm Bring your own mat \$10pp Contact: hagino.yoga@gmail.com
FRIDAYS	Community Acupuncture: 10am – 12pm Contact Collin Blake cblake@siacu.nz
SATURDAYS	NIA Dance Class: 4 – 5pm \$10 Contact: Clare Reilly 021 177 5350

GALLERY ON BLUESKIN	
Wednesday 3	Quiz 7 – 9pm no cover charge
Sunday 31 May Sunday 21 June	Greg Abbott Art Exhibition

WASTE RECYCLING – WEEK TWO	
Monday 1	Blue Bin: Bottle/Glass Recycling Red Bin: Rubbish Green Bin: Food Scraps/Garden Waste
Monday 8	Yellow Bin: Mixed Recycling Green Bin: Food Scraps/Garden Waste
Monday 15	Blue Bin: Bottle/Glass Recycling Red Bin: Rubbish Green Bin: Food Scraps/Garden Waste
Monday 22	Yellow Bin: Mixed Recycling Green Bin: Food Scraps/Garden Waste
Monday 29	Blue Bin: Bottle/Glass Recycling Red Bin: Rubbish Green Bin: Food Scraps/Garden Waste

1		2					3	4
5							6	
	6				2			7
		4	5					1
	1	8		7				
			4		6	3		
			7					
8								5
9	5						8	1
								2

Local Advertising

Rachel Brooking
MP for Dunedin

Rachel.BrookingMP@parliament.govt.nz
544 Great King Street, Dunedin
03 474 1973
@RachelBrookingMP



Labour 

Authorised by Rachel Brooking MP
Parliament Buildings, Wellington

STOKED

PROPERTY MAINTENANCE AND RESTORATION

Painting - interior / exterior
Roofing - Decks - Fences - Sheds
Sections cleared - Scrub cutting
Trees - Hedges - Lawnmowing etc...

PHONE: MARK 02041241366



KEA TREEWORKS
Certified Arborists

Pruning - Removals - Chipping
For all your tree maintenance needs contact Kea Treeworks today!

Jack Vaughan 021 582 300
keatreemail@gmail.com
keatreeworks.co.nz

CARGILL CONTRACTING LTD

📞 027 224 0311 🏠 03 482 2721
✉️ cargillcontracting@outlook.com

Water Cartage • Excavator • Gravel Supplies • Grader

Digiart & Design LTD

DESIGN & PRINTING | GIFT SHOP | NZ POST



PLEASE NOTE
Domestic & International Postage
+ New Zealand Courier ONLY
NO BILL PAYMENTS

19 George St, Port Chalmers | www.digiart.nz

Whenua Outdoor Services

Native restoration & ongoing maintenance
Silviculture services
Spot spraying / release spraying
Tree planting
Drill and fill

Damian mallinson
whenuaoutdoor@outlook.co.nz
0273300339



OPEN 7 DAYS
10AM-5.30PM
PHONE: 0275245145


FRESH BREAD
FRUIT & VEGE
MEAT & CHEESE
MILK & EGGS
VEG/VEGAN/GF
OPTIONS



opening hours:
Fri 4 - late | Sat & Sun 12 - late

We are a small family brewery owned and operated by Jono and Emma, located in Evansdale on Blueskin Bay.

We are focused on brewing small batch crafted beers!
Live music, roaring fires, variety of foodtrucks



Blueskin General Store
(Waitati On The Spot)
Store Hours:
Mon - Sat 7.30am - 6.30pm
Sunday 9am - 6.30pm
Ph 482 2741



BLUESKIN Painters
residential painters & decorators

📞 Brett 022 1970 269

Dunedin • Blueskin Bay • Karitane • Waikouaiti • Palmerston

food - music - art
the Gallery
 Licenced bar & restaurant
 eat in or take out
 Beer garden and courtyard
 warm fire

Open Wed & Thur : 10am - 3pm
 Friday . 10am - 3pm and 5pm until 8pm
 Sat & Sun 10am until 3pm

Monthly : First Wednesday - Quiz night 7 - 9 pm
 Last Wednesday - Live music 7 - 9 pm



Poppy's Homekill Butchery

Mark Popham
 Registered Homekill Service Provider

Phone 027 9072946
 03 4651430
 89 Goodwood Road, Palmerston Otago

pure SERVICES
 Innovative Solutions.

CHEMICAL FREE CLEANING



PureZone technology allows us to tackle building wash jobs without the need for harsh or dangerous chemicals

“Thank you for supporting Waitati Hall”

0800 4 PURE 0 www.pureservices.nz

CUSTOM FENCING



p: 03 465 7212, m: 021 614 100, e: nickterryfencing@extra.co.nz

new fences, fence maintenance & repairs, stock yards

Give Nick a call with any enquiry's, advice or a free quote.

ACCREDITED
FCANZ
 CONTRACTOR

FAU MCLEAN
PAINTING & DECORATING
 TRADE QUALIFIED PAINTER

PHONE: 021 0835 4680
 EMAIL: FAUMCLEANPAINT@GMAIL.COM



Meal Deliveries | Platters |
 Private Event Catering | Weddings

021 028 51872
 sheena@hisandherscatering.co.nz
 www.hisandherscatering.co.nz
 @hisandherscatering_

THIS COULD BE YOUR ADVERTISEMENT
 For more information contact blueskin.input@gmail.com

I'm happy to help with any of your Real Estate needs.
Just give me a call.



FOR SALE

152 Doctors Point Rd, Waitati



SOLD

4/68 Orokonui Road, Waitati



SOLD

31 Bay Road, Warrington



SOLD

845 Blueskin Road, Mount Cargill

One of the best real estate agents I have had the pleasure to work with. The shared amount of information on the property and local knowledge is outstanding. Kirsty responds very quickly and gets answers so a decision can be made without delay. Buyer of 20 Thornicroft Rd. 5 stars verified by Rate My Agent



Kirsty Coulter
Property Consultant
027 311 4445
kirsty.coulter@nidd.co.nz



Nidd Realty Limited MREINZ | 211 High Street | P O Box 401 | Dunedin 9054
Ph 03 477 4470 | Fax 03 477 2270 | Email info@nidd.co.nz nidd.co.nz

Licensed under REAA 2008
nidd.co.nz

Create your own Orchard

APPLES, PEARS, PLUMS, NECTARINES, FIGS, FEIJOAS & BLUEBERRIES, PERSIMMON & MORE

We can help you create your own orchard & edible garden in your own backyard.

We have a fantastic selection of fruit, nuts & berries in store now. Apricots, Apples, berries, currants, Figs, Hazelnuts, Nectarines, Peach, Pear, Plum, & more



Open 7 days
from 8.30am

03 482 2828
2 Harvey Street,
Waitati 9085, Otago

your complete
gardening destination blueskinnurseries.co.nz



WEEKDAY COFFEE SPECIAL

EARLY BIRD SPECIAL

**COME IN BEFORE 11am
for a Coffee &
your choice of
Scone or muffin**



\$11.90
EXTRA FOR
ALTERNATIVE MILK

CALL OR TEXT YOUR ORDER 0274822633

blueskinnurseries.co.nz

**Ashford
LANDSCAPING**

An experienced and well-equipped Team, Landscaping Blueskin Bay since 2004



Planting

The right plants every time

Shelter, Sustenance, Wildlife Habitats, Shade, Bank Stabilisation, Ponds

Garden Care

Everything your garden needs

Lawns, Mowing, Hedges, Pruning, Clearance, Mulching, Spraying



Landscaping

Expert Landscape Construction

Timber, Concrete, Rock, Paving, Tight Space Excavation & Earth moving

Design

Solving your landscape problems

Landscape Concept & Planting Plans, 3D Plans or Simple Sketch Designs

www.ashfordlandscaping.co.nz

paul@ashfordlandscaping.co.nz

Paul: 021 069 5258



CLASSIFIEDS

WARRINGTON PHYSIOTHERAPY

For your new acute/chronic injury rehabilitation. Open Tuesday - Friday. Contact Jennifer on 022 397 8108 or warringtonphysiotherapy@gmail.com

BLUESKIN PLAYCENTRE

Open Mon, Tues, Wed from 9 -12 during term time. Come and visit us! We are located at Waitati Primary School.

WAIKOUAITI COAST HERITAGE CENTRE

For \$5 per adult you can tour our Category 1 listed 1869 BNZ bank building set up as a residence and bank. 200 Main Road Waikouaiti. Open 1 - 4pm Wednesday & Thursday and 10am - 4pm Friday - Sunday.

WAIPUTAI HUB

Having a Birthday Party or a Gathering. Why not rent the cozy and friendly Hub at \$15 hour. Call Nancy on 021 171 0226 for further info, or email waiputai@gmail.com

EAST OTAGO PLAYGROUP

Coffee group for parents and children. 10am - 12pm every Wednesday during School Term at Waikouaiti Plunket Rooms, East Otago Events Centre. Ph. Annabel 027 2291 608 for more info or just drop in.

LILLIPUT LIBRARIES

28 Brown St, Waitati, Coast Rd and Watson St, Warrington

WAIKOUAITI PALMERSTON TOY LIBRARY

Borrow toys for children aged 6 months to 8 years. Open Saturdays 10 - 11.30 at Waikouaiti Racecourse, Clackmannan Street email wptoylibrary@yahoo.co.nz

BRAINSAVER
Providing brain injury packs to Aotearoa

022-5749-254
brainsavernz@gmail.com
@brainsaver

Follow us and our growth while we help to support individuals one step at a time

WAIKOUAITI / PALMERSTON TOY LIBRARY

OPEN SUNDAY 10:00 - 11:30 AM

(EXCLUDING PUBLIC HOLIDAY WEEKENDS, EASTER AND CHRISTMAS HOLIDAYS)

AT THE WAIKOUAITI RACECOURSE
CORNER OF CLACKMANNAN AND CUPAR STREETS
WWW.WPTOYLIBRARY.MIBASE.CO.NZ

Whats Your Home Worth In Todays Market?

Talk to your **Trusted Local** for a **FREE, no-obligation, comprehensive appraisal.**

Leading Technology - Expert in Negotiating - Excellent Communication - Local Knowledge

Leanne Black
Property Consultant
027 552 5502 / leanne.black@tallpoppy.co.nz
Licensed under the REAA 2008

9	6	1	5	2	8	3	4	7
8	5	4	9	7	3	2	1	6
3	2	7	4	1	6	9	8	5
7	3	6	2	4	1	5	9	8
1	4	5	8	9	7	6	3	2
2	8	9	6	3	5	4	7	1
5	1	2	3	8	9	7	6	4
4	9	8	7	6	2	1	5	3
6	7	3	1	5	4	8	2	9

Answer to May Sudoku

<h3>YOUR CONTRIBUTIONS</h3> <p>We welcome and thank you for your contributions and invite you to send your short articles of local interest, calendar events, milestones, history, historic images, poems, recipes, photos of local events, advertising; and anything else you wish to share with your community. Where possible, please try to limit articles to 250-300 words max, about half a page. Any opinions or views published in the Blueskin News are those of each contributor solely and not necessarily those of the Editor or Blueskin News Committee.</p> <h3>CLASSIFIED ADVERTISING</h3> <p>To submit your classified ads, calendar entries & article submissions for publication please send your text and any photos to: blueskin.input@gmail.com by the 15th of each month</p>	<h3>AD SIZES PAGE LAYOUT COST</h3> <p>A4 = 210 by 297 Full page advertisement \$300 A5 = 210 by 148 Half page advertisement \$150 A6 = 148 by 105 Quarter page advertisement \$75 A7 = 105 by 74 Business Card size \$35 Classified Ad \$5 (Free for under 18 or non-profit)</p> <h3>CONTACT US</h3> <p>Editor Bernie Cornford Email blueskin.input@gmail.com To subscribe to digital version blueskin.subscribe@gmail.com Online version www.blueskinnews.org All donations gratefully received. Bank a/c 03 1726 0010157 00 Please include a reference to indicate that it is a donation and a name, if you want a receipt.</p>
--	---

'Blueskin News' published by Blueskin Media: voluntary/non-profit community publishers in Blueskin Bay (Seacliff, Warrington, Evansdale, Waitati, Doctors Point, Pūrākaunui), Dunedin, New Zealand. All material sent to or published by us is "copyleft" in the public domain and may be freely shared, archived, re-edited and republished. If you want to credit the source it's "blueskin news".

Printed by Digiart Design Limited



Pūrākaunui School

Seeing numbers in a whole new way

Our tamariki are exploring maths through Numicon – a hands-on approach backed by research and brought to life through talk, touch, and curiosity.

Ask most of us to picture the number seven, and we see a written digit. Ask a child learning with Numicon, and they picture a bright purple shape with seven holes. That's precisely the point.

Numicon is built on a well-researched approach called Concrete-Pictorial-Abstract (CPA): children first explore ideas by handling physical objects, then working with pictures, and finally with numbers alone – only once real understanding is in place.

CONCRETE – Handle shapes and objects to feel how numbers work.

PICTORIAL – Draw and work with images that represent those objects.

ABSTRACT – Work with numbers and symbols, built on solid foundations.

"I can see clearly that 0.3 and 0.7 make one whole with Numicon shapes because they help me visualise it. Today we saw how many multiples we could make out of four numbers – it was really helpful."
– Zavia, Pūrākaunui School

At Pūrākaunui School we support every learner through conversation, mathematical vocabulary, and hands-on materials across all year levels. Talking about maths and having something to hold and explore matters at every age – it builds confidence for those who find maths tricky, and deepens thinking for those who don't.

Community Thanks

A huge thank you to Port Otago for their generous financial support of our Open Water Swimming programme last term. Your investment in our tamariki means the world to our school community – we are very grateful.

Email principal@purakaunui.school.nz if you would like to arrange a visit to see how we learn here.



Murray Johnston

Mark Brown tells his story

I first met Murray Johnston when I was employed as a gardener at Orokonui Hospital in 1975. Murray was the farm manager of both Seacliff and Orokonui farms which the Department of Lands and Survey administered. He had worked on the farms since leaving school in 1955. The Seacliff operation included all the old hospital grounds, including what is now Truby King Reserve.

Murray obviously recognised my interest in growing plants and asked me if I was interested in using the old Seacliff glasshouses, which had been unused for some time – an offer too good to turn down. I began propagating and growing plants on my own account. This cemented my long association with Blueskin Bay.

A few years later the Government decided to dispose of the Seacliff property. I won the tender for demolition of the two glasshouses and made one “new” one on our recently purchased property at 36 Doctors Point Road. This is still part of the operation but has had a few repairs since! And needs a few more now.

This was the beginning of Blueskin Nurseries. Thanks Murray!

Thank you Karen and Lynda Johnston for driving your Dad, Murray, to Blueskin Bay in March to catch up with “old” friends. It was appropriate that morning tea was held at St Brigid’s church at Blueskin Nurseries. Photos courtesy of Lynda Johnston.



Morning Tea at St Brigid’s



Analise and Lynda



Murray, Clare and Mark



Murray, daughter Lynda and Robyn

Waikouaiti Coast Heritage Centre is celebrating 5 years since opening

From 4 – 28 June we are holding a major art exhibition by local artists

In addition, the gift shop is offering 20% off selected stock in June

As part of the June celebrations for the WCHC artists are offering the following activities:

7 June | 2-3pm - Jenny Longstaff is presenting “Why old stuff matters: the place of heritage in communities”

12 & 14 June | 11am - Ngahuia Crossman's workshop on “The art of showing up” see www.inspiringdesign.co.nz

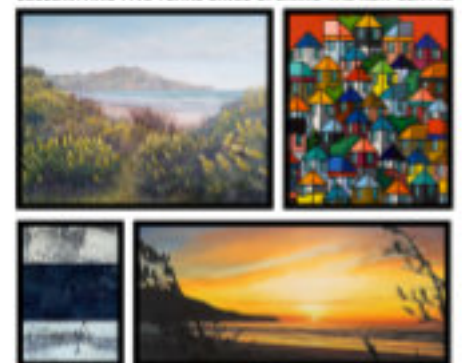
20 June | 2-3pm - Zenobia Southcombe presentation

26 & 27 June | 11-3pm - Sue Lean “Introduction to Painting in oil” workshop text 022 014 5596



ART EXHIBITION WAIKOUAITI COAST HERITAGE CENTRE 4th-28th JUNE

CELEBRATING FIVE YEARS SINCE OPENING THE NEW CENTRE



Cnr. Kildare & Main Streets

Wednesday & Thursday
1pm - 4pm

Friday, Saturday & Sunday
10am - 4pm