

# BLUESKIN NEWS

COMMUNITY NEWSLETTER Est. 1985

DECEMBER 2022

Seacliff • Warrington • Evansdale • Waitati • Doctors Point • Pūrākaunui



## In this issue...

Opera House Picnic & Consultation **page 4**

Speed Limit Changes **page 8**

Farmergeddon III **page 11**

Food Pantry **page 13**

Waitati Music Festival **page 16**

Prickly Subject **page 17**

Karitane Playground **page 19**

**plus lots more ...**

Cover  
image:  
Photo by  
Jo Prince



Waitati Brewers Cup



Surf Club Quiz Nite



Waitati Music Festival



Warrington School



Warrington School



Warrington School





## Editor's Note

It is the end of a year and nearly the beginning of another and I would like to say thank you to the Blueskin News team for having me on board for the year. I have genuinely enjoyed working on this publication. Aotearoa, New Zealand is a special place, and it is places like Blueskin that make it so. I recently came across an article published in the New Zealand National Geographic in which Kirsten Lawson visits the area "to find out what remained" of its "vitality and idealism". She found plenty (see: <https://www.nzgeo.com/stories/waitati-still-crazy-after-all-these-years/>).

Lawson delights in describing a cast of "off-beat" characters and a concentration of creativity — including environmentalists, artists, musicians, the publication of *Mushroom* (now in the Hocken Collection and recently remembered in the ODT, see: <https://www.odt.co.nz/the-star/hippy-magazine-captured-zeitgeist>) and the eccentricities and founding principles of the Waitati Militia. She also describes a small-village friendliness, contentment based around living "without crushing judgment" and the feeling of living in a "sanctuary". Most surprisingly, I discovered that this article was written in 1989. Today, not all the people are the same, but even now, as we spill into 2023, these eclectic elements are still very much a part of Blueskin's vernacular. And, of course, the red telephone boxes are still there.

When I visit the area it is to see friends (because they are kind, creative, spirited individuals who have similar values). I also visit the area because *it really is* a tranquil place to walk, paddle or just be. I go to the Waitati Music Festival each year with my family — to let them feel the colour and resourcefulness of a contented, free-range community (for Paul Allen's visual feast, see <https://www.youtube.com/watch?v=ClYLnwdGa8A>). I listen to their voices and admire their many talents in their many forms. And, although I am in Koputai, a few kilometres over the hill, I always enjoy the journey through the bird-charged bush and the ethereal coastal scenery on both sides.

So, go well Blueskin, keep being awesome and I'll see you around. Ngā mihi o te tau hou. Aroha nui,

**Meg Brasell-Jones**

**1909 postcard:** On Waitati Creek, 10 Miles from Dunedin - photo by J. Jackson. Thanks to John Scott for posting on Blueskin Community FB page.



ON WAITATI CREEK, 10 MILES FROM DUNEDIN.

Landscape Class—J. Jackson, Photo.

## Blueskin Bay Community Spaces

### Warrington Hall

Available for birthdays, family gatherings, exercise classes, dances and dos etc, at reasonable rates. Hire includes a fully equipped kitchen and tables and chairs.

**Contact Lyn 482 2896 or Rowena 482 2667**

### Waitati Hall

Suitable for large meetings, weddings, parties, concerts, dances etc. (up to 120) features kitchen, toilets, stage, sound system and large projection screen. **Contact**

**Blueskin Nurseries on 482 2828**

### Waitati Hall Meeting Room

Suitable for committee meetings, small gatherings, demonstrations etc. (up to 20 people) features kitchen and toilets. **Contact Blueskin Nurseries on 482 2828**

### Blueskin Bay Library Meeting Room

Suitable for committee meetings, presentations, training, interviews etc. (up to 12 people) features modular tables, large projection screen, kitchenette

and toilets. **Contact Blueskin Bay Library 482 2444**  
**[blucirc1@dcc.govt.nz](mailto:blucirc1@dcc.govt.nz)**

### Waiputai Hub

Warm and cosy meeting space, community gatherings, classes, children's parties, and workshops for up to 20 people. Features include small kitchen, comfy couches, tables and chairs, fenced grounds including playground for under 5s and toilets. Available to hire for workshops, courses, children's parties or family events etc. at a reasonable hourly rate.

**Booking enquiries to [waiputai@gmail.com](mailto:waiputai@gmail.com) or Nancy 482 1198**

Hire charge is usually applicable, details can be obtained on request.



BLUESKIN BAY ONLINE is a FREE searchable Local Business Directory developed to support local businesses across Blueskin Bay.

We aim to list as many local businesses, and trades & services as we can find – to make it easier for you to find and support them too!

If you would like to advertise your business, email your details to: **[blueskinbayonline@gmail.com](mailto:blueskinbayonline@gmail.com)**

or complete the contact form at  
**[www.blueskinbayonline.co.nz](http://www.blueskinbayonline.co.nz)**

*It's as simple as that*

Let's keep supporting our local businesses

# Opera House Christmas Picnic and Consultation Day

**Tēnā koutou katoa. We hope to see you at the Opera House Christmas picnic and consultation day on Saturday 10 December, from 12 noon. There will be things for the kids to do, a bbq and some acoustic live music to say thanks for the great help we have had this year. We will also launch our Opera House Fence Post Fundraiser project selling steel fence post plaques designed by our trustee, Anita DeSoto.**

We also want to share our ideas with you and to hear yours for the future of the land. We'll need your support as a community if we are to take the Opera House in a positive direction. We want the Opera House to become a fantastic community asset. We would like to talk with you about our hopes for the land and what ideas we have explored so far to meet the Trust objectives of providing housing, food and community activity.

## Funding

Over the last few years we've looked really hard at funding for social housing. Some of the avenues we've tried are Housing New Zealand/ Kainga Ora, Dunedin City Council, Habitat for Humanities, Lotteries, along with others. Unfortunately the advice we have is that there is no will or money to publicly fund small housing developments. We were surprised and disappointed as there is a shortage of affordable housing in Waitati. We still want to help address that shortage and so it seems both philanthropy together with self-funding are our best options. The Trust is rich in land assets but cash strapped.

On a brighter note there is funding out there for community-based projects. This is where we have been successful in getting funding for some operations costs like rates and insurance, creating and maintaining the community garden and for arts-based projects like restoring the teapot. This is the kind of community activity that we

envision can ultimately save the Opera House and create a beautiful community asset.

## The Opera House building as a community space

The Opera House is DIY as we all know which was fine for a very long time. As it is now, it needs so much remedial work that it's pretty much a complete rebuild if it is to be used for residential tenants. It's about as close to healthy home standards as a chicken coop.

On the positive side, the bones of the building are mostly good. It is beautiful, it reminds us of significant people and it has community heritage. We can preserve it by thinking creatively and applying for heritage, community and arts funding to retain it as a community space or an artist studio. We will need money for that and help from hands-on volunteers as well.

## Philanthropy and self-funding for social housing – selling the White House section

We looked into borrowing on equity to build social housing. The barriers include our inability to service a loan with no income for the foreseeable future, the obligation on trustees to be personal guarantors, tight bureaucratic and legal issues related to borrowing as a charitable trust and anti-money laundering legislation that makes it hard for a small Trust like us to borrow.

So then we have to consider selling one of the three sections we own. The only section that would make

sense to sell is the White House section as we cannot afford to build on it and the house cannot be tenanted except as a studio or shed. We have approached both the Dunedin City Council and DOC to see if they would be willing to purchase it (cheaply) because we thought it was a way of keeping the land as part of the estuary but they are not keen so far.

Selling the White House section would give us enough money to keep the Community Garden, Gnome home, Opera House and to also set up the back section for tiny houses. We could afford the new water, electricity and sewage infrastructure we need and put in building pads for small housing like tiny homes, prefab units, buses etc. This kind of housing use means we could be both climate conscious and affordable. We would have a stronger case for philanthropic housing contributions if we can either match donations or demonstrate our independent financial contribution. There is also an argument to be made for using the money to partly restore the Opera House but this needs to be weighed against the total cost of restoration and its future use.

We are working through our options for how to best use the land we have, meet our trust deed obligations, keep the trust financially healthy and make sure the Opera House can remain a community asset for many years to come. There are no easy options





for us but we are prepared to put in the work and make some hard decisions.

#### The Sections:

##### 50A Doctors Point Rd

(The Gnome Home)

Zoning: Township & Settlement  
The building on this section is a DIY refrigerated panel shed that is about 3m X 4m. There are no facilities or services.

##### 50A Doctors Point Rd

(The Garden)

Zoning: Township & Settlement

##### 52 Doctors Point Rd

(The Opera House)

Zoning: Township & Settlement.

The old house is in this part of the section, this includes the old sheds which will be demolished. There are services to the house

##### 52 Doctors Point Rd

(The Back Section).

Zoning: Township & Settlement. This area is vacant.

##### 54 Doctors Point Rd

(The WhiteHouse)

Zoning: Coastal. The White House is approximately 4m x 8m. There are no facilities or services.

#### Advice from Dunedin City Council:

Township & Settlement:

Hazard 1 Flood (restricted discretionary activity).

Hazard 2 Coastal (residential units to be relocatable and at accepted height from ground).

Although a resource consent will be needed to address the flood hazard, it can be addressed through minimum floor level and other mitigation. Potentially up to four units can be established on the land.

Coastal:

Hazard 1 Flood (restricted discretionary activity).

Hazard 2 Coastal.

We have been advised by the DCC that this section can not be built on without resource consent.

#### The Future

So hopefully this gives us something to discuss at the consultation part of our day. We'll be holding it away from the picnic, most likely in the Opera House. We can also give you a tour of the Opera House, back section and the White House to give you some context. Wear good shoes.

We are really keen on events in the Garden area so let us know if there's anything that you want to do there. The Garden is open for walks but be aware there is no proper fencing, (yet anyway!) so keep an eye on the kids and dogs.

Email us at [operahousetrust@gmail.com](mailto:operahousetrust@gmail.com) if you have any questions, ideas or comments or would like to be put on the volunteer email list (volunteer in the subject line please). We are looking for volunteers with skills they can offer. There is clearing, gardening and demolition of the old sheds, as well as architecture, design, and other skills that could be really helpful.

And finally, a really big thank you to all the volunteers who have stepped in to help us with all kinds of things including the Matariki celebration. Ngā mihi nui ki ngā kaimahi. Ka rawe!

**Metiria Turei**

#### Fence post designs in steel:



## Need an MP?

**David Clark MP for Dunedin**

**If you require advocacy, information or support please contact me**

Dunedin Office

[dunedin@parliament.govt.nz](mailto:dunedin@parliament.govt.nz)

03 474 1973

544 Great King Street,  
Dunedin

[f/DavidClarkMP](https://www.facebook.com/DavidClarkMP)



**Labour**



Authorised by David Clark MP  
Parliament Buildings, Wellington



**OTAGO VACUUM TANK  
SERVICES LTD**



Your local water delivery & liquid waste specialists, available 24hrs a day, 7 days a week.

- Fresh Water Delivery
- Septic Tank Cleaning
- Water Tank Cleaning
- Grease Trap Cleaning
- Drain Unblocking
- Industrial Waste

[www.ovts.co.nz](http://www.ovts.co.nz)

0800 722 193 or 027 432 4796

# on the spot

**Blueskin General Store  
(Waitati On The Spot)**

**Store Hours**

**Mon – Sat 7.30am – 6.30pm**

**Sunday 9am – 6.30pm**

**Ph 482 2741**







## Warrington Hall

Warrington Hall continues to be used by our regulars and also for family gatherings, birthdays and just recently for the St Barnabas Church 150th celebrations. See info in this edition for hiring the hall. Recently it was decided to remove the coin meter from the hall, \$2 coins were required to engage the hall heaters. It seems that gathering up enough coins to feed the heaters was an issue for some hall users so the committee made the decision to have the meter removed. As from 1 January 2023 hall rentals will rise by a small amount to make up for the deficit from having the meter. Rentals have been at the absolute minimum for years and years and hall users won't notice too much difference between feeding the meter vs paying a higher rental. A big thank you to the Blueskin News team for another year of keeping us informed of all things happening in the Bay. Merry Christmas and enjoy a well earned break – from all the Warrington Hall Committee.

**Lyn Hastie, Secretary.**



### Boutique Catering & Meal Delivery Service

Food produced with love and respect

Please get in touch next time  
you require catering. Mat Lewis & Sheena Booth  
P (03) 482 2155 M 021 028 51872  
Email: [sheena@hisandherscatering.co.nz](mailto:sheena@hisandherscatering.co.nz)  
Web: [hisandherscatering.co.nz](http://hisandherscatering.co.nz)



INSPIRING Design



ARA STUDIOS  
CREATIVE STUDIOS | CONTENT CREATION  
[WWW.ARASTUDIOS.CO](http://WWW.ARASTUDIOS.CO)  
36 HARVEY STREET, WAITATI

INSPIRING DESIGN  
BRAND IDENTITY | WEB DESIGN | SQUARESPACE  
[WWW.INSPIRINGDESIGN.CO.NZ](http://WWW.INSPIRINGDESIGN.CO.NZ)

KERRY HODGE  
PHOTOGRAPHER | STORY TELLER | CREATIVE  
[WWW.KERRYHODGEPHOTOGRAPHY.COM](http://WWW.KERRYHODGEPHOTOGRAPHY.COM)

**NIDD**  
REALTY

dunedin  
100% LOCALLY OWNED

With a personal love for the area and 17 years experience helping and advising Sellers, and matching Buyers to homes - I'd love to help you if you are considering selling.



6 Bourke St, Waikouaiti



21 Park Road, Warrington



1399 Coast Road, Karitane



195 Heyward Point Rd, Heyward Point



Kirsty Coulter  
Property Consultant  
MOBILE 027 311 4445  
DIRECT 03 425 9943



The utmost professional from our first meeting, we couldn't have wished for anything more with Kirsty. Always kept us informed, always available with answers to questions we had. For us the experience was perfect. We highly recommend her. Sellers 121 Coast Rd, Warrington.

Nidd Realty Limited MREINZ | 211 High Street | PO Box 401 | Dunedin 9054  
Ph 03 477 4470 | Fax 03 477 2270 | Email [info@nidd.co.nz](mailto:info@nidd.co.nz)

Licensed under REAA 2008  
[nidd.co.nz](http://nidd.co.nz)

## Ashford LANDSCAPING

An experienced and well-equipped Team, Landscaping Blueskin Bay since 2004



### Planting

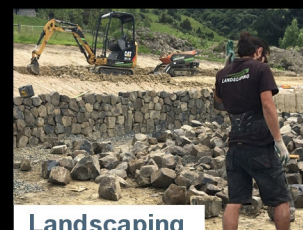
The right plants every time

Shelter, Sustenance, Wildlife Habitats,  
Shade, Bank Stabilisation, Ponds

### Garden Care

Everything your garden needs

Lawns, Mowing, Hedges, Pruning,  
Clearance, Mulching, Spraying



### Landscaping

Expert Landscape Construction

Timber, Concrete, Rock, Paving,  
Tight Space Excavation & Earth moving

### Design

Solving your landscape problems

Landscape Concept & Planting Plans,  
3D Plans or Simple Sketch Designs

[www.ashfordlandscaping.co.nz](http://www.ashfordlandscaping.co.nz)

[paul@ashfordlandscaping.co.nz](mailto:paul@ashfordlandscaping.co.nz)

Paul: 021 069 5258







## SCHOOL UPDATE

Last week we had school photos with the lovely Sinead McGivern as photographer. I snapped a few photos as we wrangled ākonga to look at the camera. It reminded me of this whakatauki;

He aha te mea nui o te ao  
What is the most important thing in the world?  
He tangata, he tangata, he tangata  
It is the people, it is the people, it is the people

The photos are of Mapounui, our Year 6-8 class and Kapuka, our Year 1 and 2 class. Both ends of a school. As a Principal, I love welcoming new whanau to our school. It is a real privilege to welcome 5 year olds, throughout the year, so full of life, looking forward to the next part of their learning journey. At the other end, in December, we say goodbye to our Year 8 students, well ready to leave and start a new journey at high school.

People really are where it is at. We spend time building relationships with our students and families in order to build learning that is interesting, meaningful and relevant. Schools today are different than a generation ago. It really should be that way as well, you would be worried if your doctor was using the same techniques as 20 years ago. As the world changes, so does what we need to equip our learners with so they will flourish in the future.

That is why we place so much emphasis on our values. At Waitati school, our values of Manaakitanga (care and respect), Kotahitanga, working together, Rangatiratanga, leadership, and Turangawaewae, connectedness, guide us in all we do. In a world full of change, our values are what help us to be grounded and they guide us in how we could be and what we could do. When our learners finish at Waitati School we hope that these things we have chosen to aim for have made a difference in every life, and that they will take these things forward with them. I hope they value the people that surround them.

2022 has been the most challenging year out of all the Covid years we have had. The way the year changed, the amount of sickness, the uncertainty, has been difficult. However, we made it, and as life returns to its new normal, we can celebrate that we have each other, especially our wonderful community at Waitati.

I am so grateful to our village, to all who help us out, support us and look out for our children. Happy Christmas to you all. We are having a thank you morning tea on Tuesday 13 December at 10.30am. You are welcome to join us.

I am sad to be saying goodbye to some of our learners, but with hope, look forward to another year in 2023. It is going to be a good one!"

Nga Mihi

**Tara O'Neill, Principal**

principal@waitati.school.nz | 02102660014

## The New Zealand Death.

They say drowning is a peaceful death,  
but I did not like it.

In the morning,  
when my body washes up  
on an empty beach,  
the sandhoppers  
and flies  
are the first  
to find me.

My clothes and shoes are  
still piled in a heap,  
up above the high tide mark  
where I left them.



**Grant Poultney**

## CARGILL CONTRACTING LTD

📞 027 224 0311 🏠 03 482 2721

✉️ [cargillcontracting@outlook.com](mailto:cargillcontracting@outlook.com)

Water Cartage • Excavator • Gravel Supplies • Grader

**STOKED**  
PROPERTY MAINTENANCE

LAWNS  
SCRUB CUTTING  
WATERBLASTING  
IRRIGATION  
TREES

SECTIONS  
LANDSCAPING  
PAINTING  
HEDGES  
CLEARED

PHONE: MARK 02041241366



# Council Consulting on Speed Limit Changes



**DUNEDIN** | kaunihera  
CITY COUNCIL | a-rohe o  
ōtepoti

**Dunedin (Monday, 14 November 2022) – The Dunedin City Council is now seeking public feedback on a speed management plan that is primarily focused on creating safe and appropriate speeds around schools.**

The Interim Speed Management Plan (ISMP) will be used to implement speed limit changes over the next 18 months, to meet new regulations and align with the Waka Kotahi 'Road to Zero' national road safety strategy. The regulations require a reduction in speed limits around all Dunedin schools, with an interim target of 40% of schools in a reduced speed zone by 2024.

DCC General Manager Infrastructure and Development Simon Drew says schools have been approached and have provided feedback on their respective proposed zone, and now is the time to seek public feedback. "These changes are required to meet road safety regulations, so this consultation is about ensuring that we have a wide range of feedback from the public on whether the extent of the speed zones is fit for purpose, and whether the zones should be variable or fixed."

The ISMP proposes a speed limit of 30km/h for all Dunedin school zones. The zones are based on typical or expected routes for children and caregivers to safely get to school, whether by walking, cycling, or by car.

"In some cases, we are proposing that schools sit within a wider 30km/h permanent (all day, every day) speed zone, and other schools are within variable school zones where the speed limit will be reduced to 30km/h during school drop off and pick up times."

The ISMP also includes proposed speed reductions for a section of George Street, Karitāne, Pūrākaunui and four urban centres – Mornington, Caversham, Māori Hill and the Tertiary Precinct.

"We want our urban centres to be thriving hubs of activity, that are safe and friendly places for pedestrians, cyclists, and people with disabilities. Making them more pleasant and accessible will have the added benefit of people wanting to spend time there, which will have economic benefits for businesses."

Public feedback will be considered by the Council early next year before the ISMP is adopted. The DCC will develop and consult in 2023 on the full Speed Management Plan (2024-2034) which considers the entire city.

The consultation closes on Friday 9 December 2022. All information, including an online feedback form, can be found at [www.dunedin.govt.nz/speed-review](http://www.dunedin.govt.nz/speed-review).



## CHEMICAL FREE CLEANING



PureZone technology allows us to tackle building wash jobs without the need for harsh or dangerous chemicals

0800 4 PURE 0

[www.pureservices.nz](http://www.pureservices.nz)

HARVEY  STREET

**MERCHANT**

ESTD. LOCAL 2020  
PRODUCE



We have a great selection of local meats, cheeses, organic produce, fresh fruit, flowers, Pure NZ ice cream, homewares and other wonderful goodies. Spoil yourself or a loved one.

Proudly supporting Local & NZ Made.  
website : [www.harveystreetmerchant.com](http://www.harveystreetmerchant.com)

Hours : Thursday, Friday & Monday 10 - 6pm

Saturday & Sunday 10-5pm





# BLUESKIN BAY LIBRARY

28 Harvey Street, Waitati, 9085 • Ph 03 482-2444

[www.dunedinlibraries.govt.nz](http://www.dunedinlibraries.govt.nz)



## New Digital Library Features



### Comic Plus

DPL have just launched **Comics Plus**, our brand new digital platform offering unlimited access to thousands of digital comics, graphic novels and manga. There is never a wait to read as all titles are unlimited access and simultaneous use. All you need is your Dunedin Public Libraries card and a computer, or download the LibraryPass app to your phone or tablet to get started.

### Comics Plus Children's Library

For all Youth library card holders aged 0 to 17

### Comics Plus Full Collection

For Adult library card holders aged 18+

### VOX Books

Books that talk, a new entertaining and educational offering for young readers. VOX Books don't require CDs, tapes, batteries, devices, or internet access; just press a button and you're listening and reading! VOX Books can also be used with or without headphones, making them perfect for both solo and group enjoyment.



### LOTE4Kids

Storytime in your language. **LOTE4Kids** allows children to enjoy the magic of books in world languages from the comfort of home. Each book is provided with an English translation to help develop multilingual reading and listening skills.



### Booklist Reader

Each month, Booklist Reader showcases top-10 lists, must reads, interviews with (and articles by) top authors and illustrators, and adult, youth, and audio recommendations for all communities and all who love to read. In addition to great recommendations, Booklist Reader seeks to highlight authors and books that library customers may not have otherwise discovered and to encourage all to explore these offerings in their local libraries. We have free, online access to this via our website:

<https://www.dunedinlibraries.govt.nz/services/find-a-good-book/booklist-reader2>

### eBooks and Audiobooks

The new ePlatform app is your ticket to unlock the world of eBooks and Audiobooks. The loan limits on Ulverscroft have increased from 2 to 4 issues.

## What's On

### Children's Summer Reading Programme

Until 31 January 2023

Be sure to sign up to enter the new **Design a Bookmark** competition. Entries must be in by **6 January** and will be on display in the library for our community to vote on.

### Kat Ana Fiddle Christmas Sing-along

Saturday 17 December, 11.30am

Get into the spirit of the season with a musical storytime extravaganza from storytelling duo Kat Anna Fiddle. Sing along to festive songs and hear stories full of joy and cheer!

### Christmas Workshops

Saturday 3 December, 10.30am

**Mens Undies** – the perfect Christmas gift for you or the man in your life with tutor Hilary Rowley. \$20, limited spaces so book early, ph 03 482 2444.

Saturday 10 December, 10am - 1pm

**Christmas Decorations** – inspired by their exquisite work on display in the library, join members of The East Otago Embroidery Guild to make a festive decoration. \$5, register by 3 December, ph 03 482 2444.

### Blueskin Bay Knitwits

Mondays, 6.30 - 8.30pm

(contact Christine 021 133 9340)

Tuesdays, 2.30 - 4.30pm

All ages and experience levels are welcome.



### Games Galore & Lego\*

Every weekday, 2 - 5pm

Come along and join in the fun of board games for all ages. Or, drop-in and build something awesome with our great new Lego pieces. \*Suitable for ages 5+.

### Bookshare

Thursday 22 December, 3.30-4.30pm

Join us for tea and a chat about what you're currently reading and get ideas for what to read next. All welcome.



### DCC Service Centre

@ Blueskin Bay Library

Open until 5pm weekdays for:

DCC rubbish bags, dog registrations and poo bags, Bokashi buckets, parking fines, rates, 75+ parking permits and Bee Cards.

Monday & Tuesday: 2-6pm

Wednesday, Thursday & Friday:

10am-12pm & 2-6pm

Saturday: 10am-1pm



Kā Kete Wānaka o Ōtepoti



# What's Your Take?

The Otago Regional Council would love to be able to share with the communities in your area the dates and venues for round two consultation for the Otago Regional Council's Land and Water Regional Plan.

ORC and Kāi Tahu representatives are visiting 19 communities from late October to early December to present options for why and how we need to manage and protect waterways and their surrounding land for future generations and to seek community feedback.

This is important for your area, so we'd love to see as many people from the community as possible give their feedback. We're also looking for as many responses to our online feedback form as well.

This includes those who can't make it to the community meetings as well as those that have attended and taken part in the discussions.

The Dunedin & Coast feedback form will be available at: [yoursay.orc.govt.nz/land-and-water-regional-plan-consultation-round-two](https://yoursay.orc.govt.nz/land-and-water-regional-plan-consultation-round-two)

**Tim Ware - Communications Advisor**



Otago  
Regional  
Council

## What's your take?

### Help us create Otago's new Land and Water Regional Plan.

The future of your unique and valuable waterways is in your hands. **Join us** for your chance to learn about the health of your rivers, lakes and streams and give feedback on options to enhance and protect them for future generations.

#### Milton

Coronation Hall  
Tues 6 Dec | 7pm

#### Dunedin

Dunedin Public Art Gallery  
Thurs 8 Dec | 12 noon and 7pm



**Can't make it?**  
For your chance to have your say and for more details about consultation round two, go to:  
[orc.govt.nz/lwrp](https://orc.govt.nz/lwrp)



## Pūrākaunui School

**Unfortunately we have had to postpone our 150th Jubilee Fair on 3 December that was advertised in the previous issue, however we will be celebrating the occasion at our end of year assembly.**

We have had an exciting start to Term 4, with the highlight being our annual school camp which we had at Waiora Scout Camp this year. We enjoyed an array of activities including abseiling, rock climbing, archery, search & rescue, the confidence course, bivouac building, swimming, and the awesome double waterslide! Thank you to all of our parent volunteers for making this possible.

As our 150th anniversary approaches, we have been busy researching the history of the school. The first school in the area was a "Sunday School" (educational, not religious) which was run privately to assist parents with teaching their children at home. Over the past 150 years there have been a total of eight schools on six separate sites (including two on the current site which tragically burned down in 1995 and 1996, both attributed to electrical faults), and the school roll has been as high as 86 students (we now have 23). In the days before it was so easy to travel outside the district, the school served as the hub of the community, housing the library and hosting social events, clubs and activities. The 100th and 125th anniversary celebrations both ran over an entire weekend with similar two-day programmes: ceremonies and activities on Saturday afternoon, a banquet and dance on Saturday evening, and a church service and picnic on Sunday!

**Sarah Williamson - Administrator**





## THE RANT

by Camellia Lisle



This is an opinion piece designed to promote feedback. If you feel you'd like to respond – email [blueskin.input@gmail.com](mailto:blueskin.input@gmail.com)

### WHAT MAKES ME SAD

It's not often in life you find yourself clutching your heart, as you feel it break into pieces. That your world comes to a halt and nothing makes sense. That the breath is swept from your body, in one swift motion and everything starts to spin. Losing someone you love suddenly, unfairly, forever, makes me sad.

### WHAT MAKES ME MAD

Sometimes, I sit in the sun, I feel the heat prickling my skin. I feel the breeze cooling the back of my neck. The birds are singing, the waves are crashing. Intermittent screeching noises from machines break the peaceful serenity of the sounds of Papatuanuku breathing. I see kids walking to school, warm and knowing they are loved. I feel peaceful and in love with life.

I don't hear cars racing, I don't hear neighbours screaming at each other and kids crying. I don't hear sirens, see an endless stream of cars stopping at that house down the road or see streets blocked off because someone down 'that street' has a gun. I don't see kids looking through trash for food.

I don't see enough people appreciate the wonderful lives that they have. This makes me angry.

### WHAT MAKES ME GLAD

Love. Love makes me Glad.



**CUSTOM FENCING**

p: 03 465 7212, m: 021 614 100, e: [nickterryfencing@xtra.co.nz](mailto:nickterryfencing@xtra.co.nz)

new fences, fence maintenance & repairs, stock yards

Give Nick a call with any enquiry's, advice or a free quote.

ACCREDITED  
**FCANZ**  
Fencing Contractors Association of New Zealand  
CONTRACTOR

## Farmedgeddon III

(Us and Them)

A few months ago, I attended a meeting by climate protest-action group Restore Passenger Rail (RPR), as they rallied people for their up-coming actions in Wellington. A thinly veiled arm of Extinction Rebellion (XR), RPR caused havoc across the capitals roading network for 6 weeks. And the people jeered. But for a dose of covid, I may have been with RPR, super glue at the ready.

A few weeks ago, Ground Swell (GS) and kindred souls Voices For Freedom (VFF), held nationwide protests against the government's agricultural emissions control proposals. They didn't cause havoc to the roading network. More a hindrance. And the people cheered.


And there lies the dichotomy. The us and them of the climate debate. On one side, RPR and XR saying "not enough, too slow", on the other, GS and VFF saying "too much, too soon". How do we bridge this binary? I decided to read some expert (the real ones, not rabbit hole social media ones) opinions, and they were unanimous. We have less than a decade to reel in 2.5°C of warming, and the climate and social crisis that will result. Simon Steel, Executive Secretary of the United Nations Framework on Climate Change says: - there needs to be a clear shift in approach, and we can't afford to lose a day. He calls for action by everybody across the globe. He specifically mentions an alarming rise in methane and says any government with a real plan will be applauded and supported. Furthermore, because meat and dairy industries are so emissions heavy, the UN estimates that ending animal agriculture could stabilise greenhouse gas levels for 30 years, off-setting 68% of CO2 emissions.

Former US presidential nominee John Kerry, while discussing the obscene profits of fossil-fuel burning industries, says last year's profits alone could create systems to capture all the CO2 produced by their products. But like me, Kerry knows the capitalist industry and the human nature it accompanies, doesn't work that way. More's the pity.

SO... Not enough – too slow? Or... Too much – too soon? I know which side I'm cheering for.

Doug Nuttall

**One Earth Electrical**



Local domestic electrician  
Call Andrew on 027 266 3906  
[ask.one.earth@gmail.com](mailto:ask.one.earth@gmail.com)



# WAITATI BOOK CLUB

The evening of the Blood Moon we gathered at Marc and Inge's place for our November get-together. We were treated to a warm and welcoming table, with a glass to suit each beer style, and Lilly the dog excited to have different humans in the household.



## THE BOOK

***Bin Laden's Bald Spot & other stories***  
by Brian Doyle.

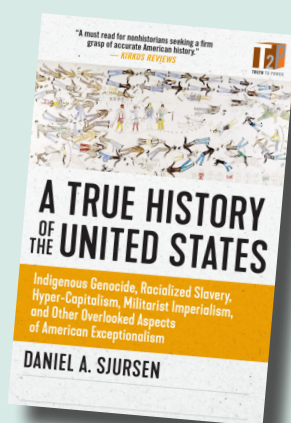
Although I've written a few short stories, I'm not keen on the genre for book club. There

wasn't a big discussion about this collection, and opinion was mixed. The stories are quirky and clever, but not particularly satisfying, or perhaps just not to my taste. I'm still working my way through the collection, so perhaps I'll have another opinion once I've reached the end.

## OTHER BOOKS

***A True History of the United States***  
by Daniel A. Sjsursen

Ross says "Sjsursen, an Iraq and Afghanistan US combat veteran, went on to run a history course for cadets at the US Military Academy at West Point. As a result I thought I might be in for a bromide version of US history. I couldn't have been more wrong. Sjsursen challenges the dominant historical narrative we have been fed for decades and provides evidence to suggest much of it is myth. It's lengthy, but very readable."



## EVENTS

***World of Wearable Arts 2022.***

A spectacular event, not something I'd normally attend but with Lucan as a model it was a must do and really loved the energy, music and of course cool, weird and wonderful designs! As a neat bonus, Lucan was modelling 'Haerenga' (Journey) designed by Christopher Davis from Aotearoa which won the Sustainability Award. A big shout out too to 'Fera Dei' which was runner-up for the supreme award, designed by Fifi Colston and Bruce Mahalski.

*"I created the top part of the work over a Worbla base and Fifi completed the vast amount of fabric work. The fabric design was created using photos from my archive of bones as well as photos of the central Otago landscape where the bones used in this creation were found."* BM



## BEER

***Beer Baroness, Just A Pinch.***  
6.9% alcohol volume.

This is a special stout treat with miso and maple. A magic combination, rich and sweet, and while I don't usually like sweet stouts this one is a treat!

***Altitude Brewing, Starlight Highway Export Stout, 6.5% alc/vol.***

Marc says "It had all the characteristics of a stout you will want to go back to: a lovely meld of coffee, chocolate and caramelized

sugars. The fact it was given to me made it even more enjoyable, as complementing with a McLeods Islands malt whiskey chaser and some dark chocolate."



## TV/FILM/PLAYS ETC.

***Hanna – Netflix***

The original Hannah (film) was tight action thriller. The Netflix series is recognizable but goes further with rich character development and an expansion that includes a detailed backstory that may appeal to those who enjoy the outdoors with a bit of spice. It is more psychological thriller than action thriller. This is a binge-worthy series, which, in our household at least, appealed to both.

## MEANING OF LIFE

*"[H]ow many would have guessed that our favourite activities would not be fiery political meetings, masked orgies, philosophical debates, hunting wild boar or surfing monstrous waves, but shopping and watching other people pretending to enjoy themselves?"*

***Annie Raser-Rowland.***



**I saw a red cabbage in the supermarket the other day for \$12.90! A package of coffee beans costs more than \$8. I have never seen food prices so high, and they will probably not go down again. Vegetables may get cheaper sometimes during peak season, but it is unlikely most prices will go down. Climate change is already making growing food hard. Floods, storms, gale force winds, hail, drought, late or early frosts...they all make food production harder, more expensive and less predictable.**

There is a garden rule which says "don't plant your frost tender plants before labour weekend", so I dutifully waited and planted my precious heritage beans at labour weekend, only to get them frosted by an unprecedented late frost, one that made old fashioned garden wisdom obsolete.

So food is expensive, accommodation is expensive, petrol is expensive and when a family is struggling with the basics it makes saving for solar panels or an electric car (which help reduce living costs) nearly impossible.

Food banks are under huge pressure to help people out. Luckily we have our own local food bank-well sort of. We

have the Waitati Community anti-scurvy pantry tucked behind the Blueskin library.

Every now and then, thanks to someone cleaning out their cupboards, the pantry gets filled up, and this is a bonus for struggling local families. You don't have to be a beneficiary or on the bones of your arse to be struggling.

So what I am suggesting is this — treat the pantry like it is a food bank and make regular donations. Can you afford to buy one extra, non-perishable grocery item a week and donate it? Things like a packet of pasta, a tin of chick peas, or a packet of crackers?

If you are having a bad week financially go and see what is in the pantry and help yourself.

If you would like to see something donated like toiletries, loo paper, onions, bread buns...ask on the pantry face book group and hopefully someone will make one of those their thing to donate this week.

I have seen people who are set up really well to survive these difficult times and sit smugly on their hands, rather than using their good position to help others in our community. This is such a caring community and so much pleasure comes from helping other people.

There are also boxes of jars with lids down there, so if you are making a batch of jam or chutney grab some empty jars and make an extra couple of jars to donate.

Christmas is coming soon and that adds extra financial strain so maybe donate something a little bit special, but not a red cabbage- they may be expensive but they are not very special.

Notes: Don't forget the fire brigade can appeal which must be coming up too.

Join the Face book group. It is called: Waitati anti-scurvy community pantry.

**Hilary Rowley** 🙏

## Blueskin Out-of-School Care

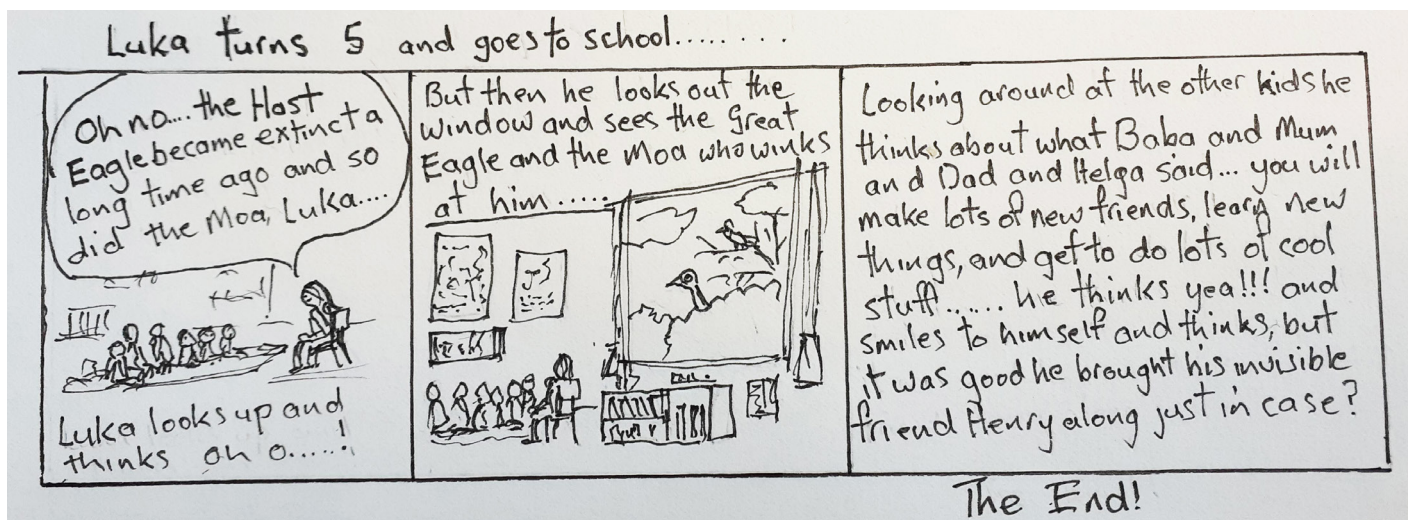
**My name is Stacey Kennedy and I am the owner operator of Blueskin Out of School Care based out of the Blueskin Playcentre. I have three boys 7,6 and 3 and my husband Bernie. We own a farm in Waitati, we moved here a year and a half ago and have loved getting to know everyone in the community. Everyone is friendly and so supportive.**

In my spare time we love to hang out at the beach, I love cooking and baking and going on adventures.

I am friendly and approachable so please do get in touch to find out more! Our Christmas Holiday programme will be filled with crafts, creating and baking. Next the Summer Holiday programme will follow from the 16 – 27 January 2023. Thanks to everyone that supports us fully I appreciate you all, we couldn't do it without you.

**Stacey Kennedy**





# Waiputai Festive Fete

Whanau friendly community gathering.  
Live music. Market stalls. Food. Games.

Live performances by  
**The Blueskin Bay Orchestra**  
**The Warblers**  
**East Otago Community Orchestra**

*December 11th 11-3pm*  
*Waiputai Hub & Warrington Hall*  
*Stephenson Street, Warrington*

**BLUESKIN** Nurseries & Café

## Create your own Orchard

We can help you create your own orchard & edible garden in your own backyard.

We have a fantastic selection of fruit, nuts & berries in store now. So many varieties to choose from

PLUM TREES

BLACK CURRANTS

PEAR TREES

Open 7 days from 8.30am

your complete gardening destination [blueskinnurseries.co.nz](http://blueskinnurseries.co.nz)

03 482 2828  
2 Harvey Street, Waitati 9085, Otago

### Home Help Service

**Your knowledge and skills can make a difference**

Plunket's Home Help service is a volunteer-based programme that offers free, practical support to families of young children in our communities. We provide support with household jobs, establishing routines and assistance with appointments or shopping.

**If you are...**

- Reliable, honest and practical
- Open minded
- Respectful
- Empathetic and kind
- Friendly, with a good sense of humour
- Able to spare 1-2 hours a week

...we would love to hear from you!

**CONTACT:**  
Josie Garner  
Home Help Coordinator  
[josie.garner@plunket.org.nz](mailto:josie.garner@plunket.org.nz)  
027 208 6774

whānau āwhina plunket

Plunket is a registered charity and a not-for-profit organisation. All income is used for the benefit of the community. Plunket is a registered charity and a not-for-profit organisation. All income is used for the benefit of the community.

## KEA TREEWORKS

Certified Arborists

Tree Pruning - Removals - Chipping

For all your tree maintenance needs contact Kea Treeworks today!

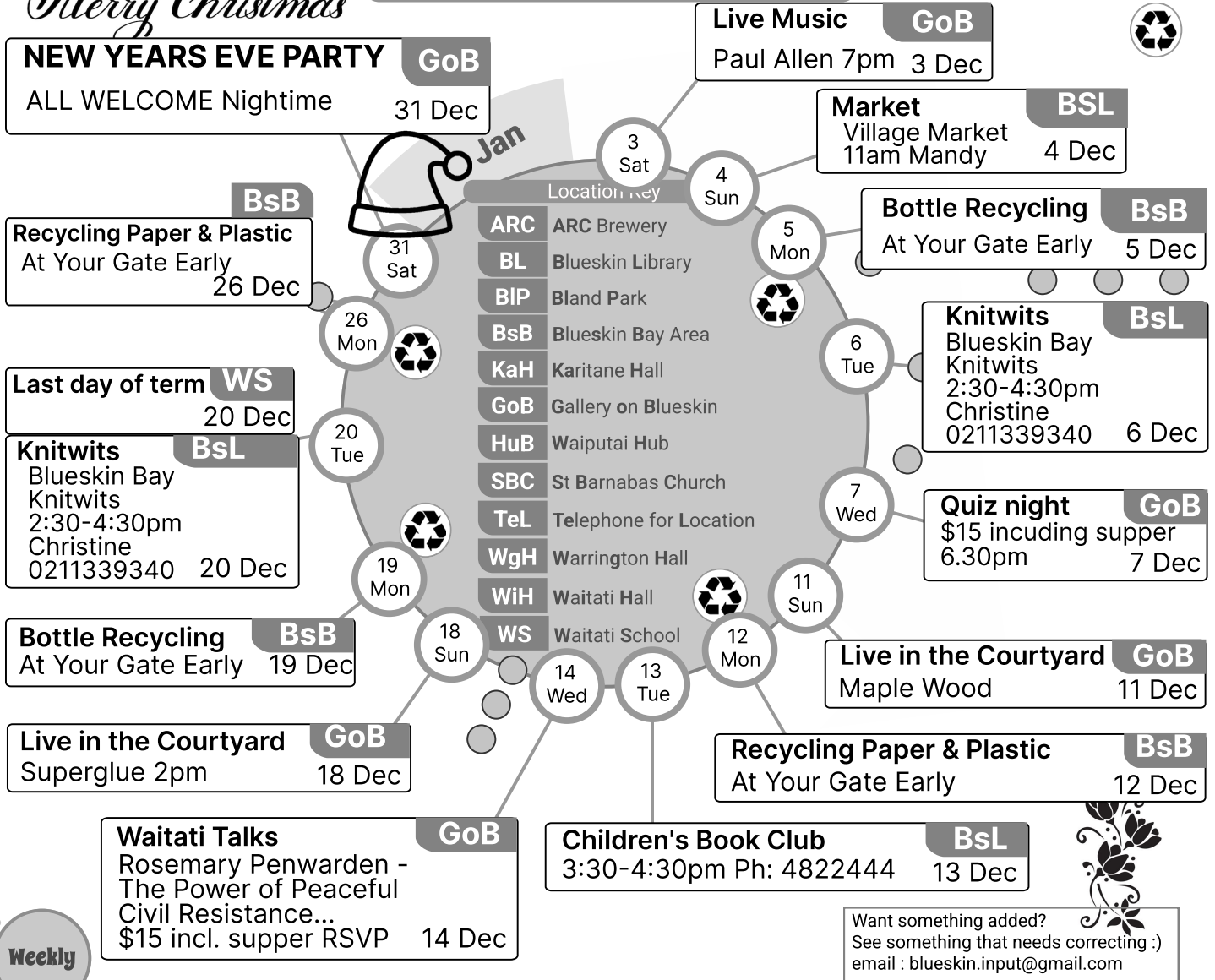
Chris 027 484 3395 Jack 021 582 300  
[keatreemail@gmail.com](mailto:keatreemail@gmail.com)  
[keatreeworks.co.nz](http://keatreeworks.co.nz)



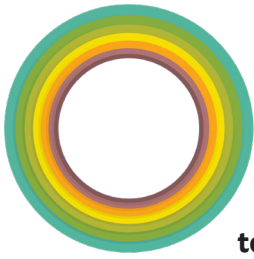
# Welcome to the Wonderful Wheel of What's on - December

*Merry Christmas*

Wheel of What's - Monthly and Special Events







# The 10th Waitati Music Festival

**If you attended, you already know we had a lot of fun at the Waitati Music Festival! Babies, toddlers, tweens, teens and adults experienced multiple musical genres over three stages. Highlights were seeing children and young people enjoying the Jungle themed (including a giant spider and snake) mini-rave marquee, as for many it was their first time experiencing electronic dance music on a proper high quality sound system, for which this type of music is intended. The DJs played their favorite tracks producing frequencies that could be felt, as well as heard, invoking movement (dancing!), feelings of total happiness and a temporary disconnect from the niggles of life. Amusingly many of the DJs children were in attendance and the feedback was superb – finally they get us crazy old people!**

In the far corner of the field, the Poet Pallet offered a wild line up of 15 bands interspersed with 15 poets and rappers and at the main stage, band after band delighted the crowd of around 1000 people. Gravity Events did a great job of managing the bands and balancing the sound throughout the event, but the unexplained generator fail at the end was sad as it interrupted our headline act — Pitch Black, who were incredible regardless. Highlights were Raw Collective, a 7-piece hip hop band from Wellington and Soul Kitchen a 4-piece psychedelic rock band from the West Coast. We were also chuffed to partner with AMPED which is a music workshop open to any new musicians who wish to learn about the industry. We offered two opening spots on the main stage which provided the acts with an amazing experience and the crowd with some amazing fresh talent - who knows, one day they may be headlining stadiums!

The Kidzone was busy all day with queues at the face painters, hut making, van painting, digging in the sandpit, story-telling and crafty workshops, culminating in a colourful parade through the crowd. The first aid team were not busy, only having to dispense a couple of plasters and feedback from the security team was that we have a very respectful, relaxed crowd who caused no problems.

Special thanks to our hardcore team of volunteers who took the lead on different aspects of the festival (gate, security, infrastructure, health & safety, kidzone, finances etc) - great job everybody! From an organisational perspective, the event was a total success, and we just covered the costs (\$75k not including volunteer hours) but it was bloody hard work, involving months of grant writing and planning, managing the threat of bad weather & covid, taking financial risks, managing the budget and now balancing the books and writing the



grant reports. We made the ticket costs for the event as low cost as possible but the reality is that any future events of the same quality and quantity will have to be better supported, by more fundraising, grant funding, sponsorship or increased ticket prices. It's an expensive business and we would welcome any suggestions from the community.

Waitati Music Festival thanks the Blueskin Bay community for buying tickets and tolerating the increased traffic/parking and noise pollution. Waitati Rocks!

**Katie Peppercorn**



# Prickly Subject

**I love gorse. Yeah I know, like gorse, I's an alien, albeit by virtue of me ancestors being forcibly transported from our native land and set to work devouring the inverts that inconveniently ate the alien crops that yous Homo so called sapiens brought to foreign parts expectin' them to provide yous with tucker.**



So bein' alien, I's apparently a certain yearning for gorse and me native land?

Take me back to the gorse and heather heaths of the Old Country where snakes, stoats and weasels, Jays and Magpies, not to mention Hscss egg collectors, abuse yer kids so yer nesting success is about one in ten goes and where, if yer not looking over yer tertials, a Sparrowhawk, Merlin or desperate Peregrine will have you as an intro to the pigeon main.

And then there's the Cuckoos. Do yer head in. You come back from a break in broodin' and by all counts there's this bloody great spotted egg grinning at you amongst your gorgeous sky blue ones and you don't notice it? And not only that, you happily sit on it for a week or so and out pops an ugly black skinned spawn of the devil chick that chucks all your darling wee eggs and chickies out of the nest and then, brain completely addled, you feed the bastard until it's thrice the size of yer good self 'til it flits off to warm, tropical Africa\* without so much as a by your leave, let alone a thank you. And there you are left

with no wee chicks and an English winter, dark by arvo, perpetual drizzle and an invasion of immigrants from the EU, not to mention Russia, who reckon they's entitled to all the inverts, berries and other tucker.

Give me Godzown and a thick, vigorous gorse bush to nest in any day. It may be a bit hard on yer un-feathered tarsi and tibiae but it's a tweetin' laugh watchin' a *Felis domesticus* tryin' to get at yer chicks. And it ain't only me who reckons gorse is a lifesaver. Me alien mates the Song Thrushes and Blackbirds love it and, for you Hscs Greenies out there who'd like to see it banished from Godzone along with yer Farmers\*\* (there's an alliance of convenience if there ever was one), so do Riroriro, Piwakawaka and the somewhat less PC, newly arrived Tauhou. Not to mention the odd Korimako.

For us Dunnocks and our endemic compatriots, gorse is a lifesaver in the sheep infested paddocks of Aotearoa. Please let it be and let the native bush grow up amongst it, though I do have to say nestin' in the likes of makomako, compared wiv gorse is an open invitation to a fast food meal of our chickies.

However, be you Farmer or Greenie, if you are of the misguided wont to do away with the devil gorse, please do so when we are not blissfully brooding our eggs or when our chicks are not driving us to distraction with their incessant, shrill demands for tucker.

\* Heaven knows why but if you want to follow the freeloaders overseas hols you can do so at <https://www.bto.org/our-science/projects/cuckoo-tracking-project>.

\*\* slip of the pen surely?

**Dasa the Dunnock**



**Email: [samercrossbuilding@gmail.com](mailto:samercrossbuilding@gmail.com)**  
**Phone: 0272328674**



**Mark Popham**  
Registered Homekill Service Provider  
Phone 027 9072946  
03 4651430  
89 Goodwood Road, Palmerston Otago



**WORKING TOGETHER**

*Found your dream home? Need to sell your own?*

**LET US HELP YOU MAXIMISE THE VALUE OF YOUR PROPERTY & ACHIEVE YOUR GOALS FASTER.**



**Leanne Black** Licensee Salesperson  
027 552 5502  
[leanne.black@raywhite.com](mailto:leanne.black@raywhite.com)



**Brian Greer** Mortgage Adviser  
0274 710 108  
[brian.greer@loanmarket.co.nz](mailto:brian.greer@loanmarket.co.nz)



**Jacqui McFadgen** Mortgage Adviser  
0274 880 494  
[jacqui.mcfadgen@loanmarket.co.nz](mailto:jacqui.mcfadgen@loanmarket.co.nz)



# WCHC Gift Shop

**Our Plant Sale at Labour weekend was a huge success, you had to be in quick as we sold over 400 plants within 40 minutes, there were many disappointed customers. We are intending to repeat the sale again next year and hope to have an even bigger number and range of plants for sale.**

Our Waikouaiti Coast Heritage Centre Gift Shop has received several shipments of new stock in time for Christmas. Just think, you might be able to do all your shopping locally and not have to negotiate numerous orange cones and lack of parking spaces in the city. We have something for everyone, and our friendly volunteers will be only too pleased to serve you. We will be open on December 24th but closed Christmas day and Boxing day.

Don't forget our Market Day on Waitangi weekend. You can rent a stall space for \$25 and sell your goods on the day. Just contact me for more details:

[Ts.mckewen@gmail.com](mailto:Ts.mckewen@gmail.com)

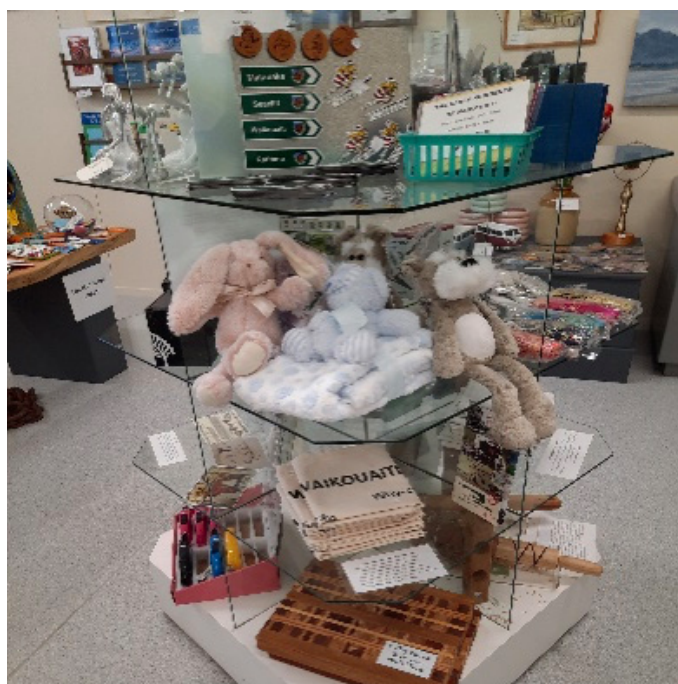
## Waikouaiti Open Hours

1 -4pm Wednesday/Thursday.

10am -4pm Friday/Saturday/Sunday

We look forward to seeing you, do come and visit. Check out our website for more information [www.wchc.org.nz](http://www.wchc.org.nz)

**Shirley McKewen, Chairperson**



opening hours:  
Fri 4 - late | Sat & Sun 12 - late

We are a small family brewery owned and operated by Jono and Emma, located in Evansdale on Blueskin Bay.

We are focused on brewing small batch crafted beers!  
Live music, roaring fires, variety of foodtrucks  
[facebook.com/arcbrewingco](https://facebook.com/arcbrewingco) | [www.arcbrewingco.com](http://www.arcbrewingco.com)



Licenced bar & restaurant

Eat in or take out

Beer garden & courtyard

**Food - Music - Art**

Opening hours

Wednesday - Saturday 11am - 10 pm

Sunday 11am - 5 pm

N.B. no evening menu on the 1st and 2nd Wed of each month due to quiz night or Waitati talks (supper provided, booking essential)

1 Harvey St. Waitati

[www.blueskingallery.co.nz](http://www.blueskingallery.co.nz)

027 8586588



# BLUESKIN ELECTRICAL

## SPECIALISING IN:

- ALL TYPES OF RESIDENTIAL & COMMERCIAL WORK
- RENOVATION WORK
- NEW BUILDS
- INSTALLATION & SERVICING

# 027 275 3977

[info@blueskinelectrical.co.nz](mailto:info@blueskinelectrical.co.nz)



# New-Look Karitane Playground Ready for Inventive Play

The Dunedin City Council has completed the revamped playground on the Karitane foreshore, featuring an adventure course and new equipment. The playground opens tomorrow, Friday, 18 November.

The DCC Group Manager Parks and Recreation Scott MacLean says, "We've been working closely with the Waikouaiti Māori Foreshore Trust Board on this playground. It makes the most of Karitane's beautiful coastal environment by encouraging inventive adventure play in a natural setting and caters for people of all ages who can use the new equipment in several ways, including to increase fitness."

The adventure course includes pull-up bars, a net climb, vertical climbing rope, balance beam, log jumps, stepping poles, climbing ladder bridges, a box jump and parallel bars. Previous equipment at the playground didn't meet safety standards. The upgrade cost \$125,000 and is included in DCC's Play Spaces Plan.

## For more information

The DCC Group Manager Parks and Recreation Scott MacLean

scott.macleam@dcc.govt.nz | 03 477 4000

[www.dunedin.govt.nz/playground-upgrades](http://www.dunedin.govt.nz/playground-upgrades)



**DUNEDIN**  
CITY COUNCIL

kaunihera  
a-rohe o  
ōtepoti



Alex Whitaker, local carver, designed the taniwha motif on the rubber matting of the playground, which represents kaha (strength). The playground is designed to be used by both adults and children, and specifically taitamariki (adolescents).

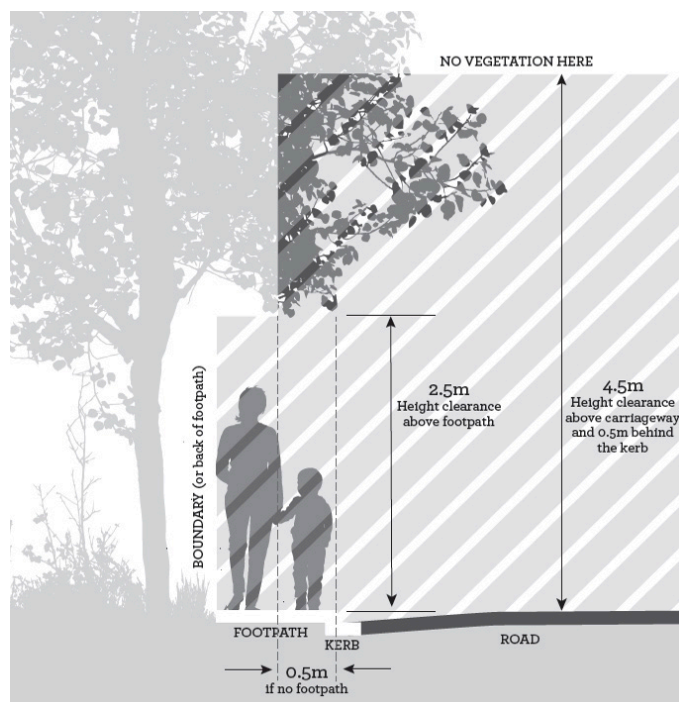




# WAIKOUAITI COAST COMMUNITY BOARD : 2022-2025

Alasdair Morrison, Chairman	info@calmarine.co.nz	0274 354 384
Andy Barratt, Deputy Chair	asbarratt@gmail.com	021 890 048
Sonya Billyard	community.powa@gmail.com	027 253 9205
Mark Brown	blueskin@xtra.co.nz	021 169 2303
Chris McBride	chris.mcbride1988@gmail.com	027 526 6006
Geraldine Tait	gersftait@gmail.com	021 217 5492
Jim O'Malley, DCC Councillor	Jim.OMalley@dcc.govt.nz	021 525 547

## WAIKOUAITI COAST COMMUNITY BOARD UPDATE



### Vegetation free envelope:

4.5m above carriageway (and 0.5m behind kerb)  
2.5m above footpath, full width.

The old rhyme included the words : “Spring is sprung, the grass is riz - -” - how true. The warmish and wettish spring has generated a lot of growth in roadside vegetation. The Dunedin City Council contractors have a programme they follow to keep verges and footpaths

clear. We keep an eye on the roadside conditions in our area and undertake drive-arounds with DCC staff to ensure that maintenance is up to date.

Sometimes it is vegetation on private property that causes issues with encroachment on to the footpaths. The illustration below gives an idea of the desired ‘clear envelope’. So, if you have trees on your property close to the roadside boundary, it is a good idea to check occasionally to ensure that your vegetation is not encroaching on to the footpath. If it is, please trim it - this will avoid having a grumpy letter from DCC in your mailbox.

Our first formal meeting of the new triennium will be held at the East Otago Events Centre on Wednesday 7th December, starting at 5.30 pm. You are most welcome to come and speak at the Public Forum at the beginning of the meeting, but please let us know in advance by contacting Rebecca Murray on 477 4000.

Our discretionary fund is still healthy and we look forward to receiving grant applications from any community groups who are in need of a bit of financial assistance. The application form is on the DCC website.

Please feel free to give me a call, or send me an email, about any concerns or suggestions you may have relating to DCC activities.

**Alasdair Morrison, Chairman, Waikouaiti Coast Community Board**

0274 354 384 : info@calmarine.co.nz

The team at Blueskin News would like to wish you all a very Meri Kirihimete! And remember, it is about the people, not the presents. But, if you love the act of giving, consider conscious options: support local, give gifts that encourage sustainable living or make your own. Above all, spend meaningful time with those around you.





## Everybody deserves to smile this Christmas



We are supporting Anglican Family Care

This festive season, Ray White will continue its successful charity campaign 'A Little Ray of Giving' for more than 10 years. Leanne has proudly brought it to Waikouaiti for the third year with the support of The Outpost Café and the community.

Donated gifts for all ages are welcomed and can be placed under the Christmas Tree at the **Outpost Café, 182 Main Road, Waikouaiti** or contact **Leanne on 027 552 5502** from 28 November and we'll make sure it gets to a deserving member of our community. Gifts can be wrapped or unwrapped and gift tags will be available at the café to label age/gender.

We are supporting Anglican Family Care, because everyone should receive a gift this Christmas.

*Thank you, on behalf of Leanne, The Outpost Café and Ray White for your continued support.*






Leanne Black | 027 552 5502 | leanne.black@raywhite.com

Licensed Salesperson | Proven Realty Limited Licensed (REA 2008)

## Surf Club Quiz Night

Warrington Surf Life Saving Club held a quiz night on Friday, 11th November at the Warrington Hall. The hall was full with 19 teams made up from club members, Blueskin Bay Community and folk from further afield. A great night with lots of fun and laughter as well as a lot of thought provoking questions. There are numerous people to thank; the club members for giving up their time to organise the night, collect raffle prizes, see to the food as well as setting up the hall and cleaning up afterwards. Many, many thanks to all who attended and emptied their wallets to purchase raffle tickets. Over \$2,000 was raised. Extra special thanks to all the local businesses, community folk and club families who gave so generously towards all the great raffle prizes. We hope you all enjoyed the evening. Once again many thanks to you all.



**NOTICE** 

**Blueskin Restaurant & Gallery**

**NEW YEARS EVE PARTY**

**Saturday, 31 December**

**NOTICE** 

**Opera House CHRISTMAS PICNIC AND CONSULTATION DAY**

**Saturday, 10 December from 12 noon**

**NOTICE** 

**WAITATI HALL SOCIETY AGM**

**Is to be held at the Waitati hall at 7.30pm on the 6th of December, all welcome**

**NOTICE** 

**BLUESKIN COMMUNITY MARKET**

**Sunday, 4 December**





# CLASSIFIEDS

**WAIPUTAI HUB** [waiputai@gmail.com](mailto:waiputai@gmail.com)

**Having a Birthday Parties or a Gathering.** Why not rent the cozy and friendly Hub at \$15 hour. Call Nancy on 021 171 0226 for further info, or email [waiputai@gmail.com](mailto:waiputai@gmail.com)

**Waiputai Festive Fete** – Dec. 11, Sunday, 11a.m.-3pm, FREE. Come and hear the Blueskin Bay Orchestra, Warblers, and the East Otago Community Orchestra perform, and there will also be food, stalls, and games at this community get together.

## EVERY WEEK Pilates Class

With Dell McLeod, who is STOTT trained. Wednesdays, 9:30 a.m.-10:25 a.m. Text 020 433 3355 to book.

**Blueskin Bay Orchestra** – Sunday: 4-6pm, Waiputai Hub, Come and make music together in a fun, email: Emily at [blueskinbayorchestra@gmail.com](mailto:blueskinbayorchestra@gmail.com) to join.

**C.O.W.s** [Caregivers of Waiputai] – Mondays & Fridays, drop in 10am-12pm. Drop in, chat and play. Cheiree 027 2819 463.

## EVERY OTHER WEEK

**Guke Jam for all** – Friday (every other week) Bring your guitar, ukelele, and/or voice to Play together with Jenny Gleeson. Free. On December 2 and 16, 7pm-8:30pm

## LILLIPUT LIBRARIES

28 Brown Street, Waitati  
Coast Road and Watson Streets, Warrington

## WARRINGTON PHYSIOTHERAPY

Open: Tuesday - Friday. Contact: Jennifer Skipper 022 397 8108.

## LANDSCAPING, GARDENING AND PROPERTY MAINTENANCE

Anything from small jobs to garden transformations! Your friendly, local experts. Contact Baden on 022 152 9523 or [info@oxleypropertycare.com](mailto:info@oxleypropertycare.com)

## SMALL LAND SPACE WANTED TO BUY FOR TINY HOME

Off grid land space wanted for tiny home. Must provide a safe water source, shelter, privacy, elevation and a sunny position. Liz 0210 319 386.

## BLUESKIN PLAYCENTRE

Open Mon, Tues, Wed from 9 –12 during term time. Come and visit us! We are located at Waitati Primary School.

## EAST OTAGO PLAYGROUP

Coffee group for parents and children (under 5) 9.30 – 11.30 every Wednesday during School Term at Waikouaiti Plunket Rooms, East Otago Events Centre. Ph. Annabel 027 2291 608 [Community Support Co-ordinator] for more info or just drop in.

## WAIKOUAITI COAST HERITAGE CENTRE

View our heritage collection and work by local artists/crafts people. Visit our 1869 Heritage BNZ building, 200 Main Road, Waikouaiti Open 1-4pm Wed-Thurs and 10am-4pm Fri-Sun.

**Wanted to buy:** Children's slide medium or large to attach to a tree. Please phone Lyn 482 2896 or 022 048



**DESIGN & PRINTING | GIFT SHOP | NZ POST**



**NZPost**

### PLEASE NOTE

Domestic & International Postage  
+ New Zealand Courier ONLY  
**NO BILL PAYMENTS**

19 George St, Port Chalmers | [www.digiart.nz](http://www.digiart.nz)



## YOUR CONTRIBUTIONS

We welcome and thank you for your contributions and invite you to send your short articles of local interest, calendar events, milestones, history, historic images, poems, recipes, photos of local events, advertising; and anything else you wish to share with your community. Where possible, please try to limit articles to 250-300 words max, about half a page. Any opinions or views published in the Blueskin News are those of each contributor solely and not necessarily those of the Editor or Blueskin News Committee.

## CLASSIFIED ADVERTISING

To submit your classified ads, calendar entries & article submissions for publication please send your text and any photos to: [blueskin.input@gmail.com](mailto:blueskin.input@gmail.com) by the 15th of each month

## AD SIZES PAGE LAYOUT COST

A4 = 210 x 297 Full page advertisement \$300

A5 = 210 x 148 Half page advertisement \$150

A6 = 148 x 105 Quarter page advertisement \$75

A7 = 105 x 74 Business Card size \$30

Classified Ad \$5 (Free for under 18 or non-profit)

## CONTACT US

Editor Bernie Cornford, Production/Layout Meg Brasell-Jones Email [blueskin.input@gmail.com](mailto:blueskin.input@gmail.com)  
Online version [www.blueskinnews.org](http://www.blueskinnews.org)

All donations gratefully received. Bank a/c 03 1726 0010157 00

Please include a reference to indicate that it is a donation and a name, if you want a receipt.

'Blueskin News' published by Blueskin Media: voluntary/non-profit community publishers in Blueskin Bay (Seacliff, Warrington, Evansdale, Waitati, Doctors Point, Purakaunui), Dunedin, New Zealand. All material sent to or published by us is "copyleft" in the public domain and may be freely shared, archived, re-edited and republished. If you want to credit the source it's "blueskin news".

Printed by Digiart Design Limited

# Blueskin Playcentre News — Summer 2022

Playcentre 

"Whānau tupu ngātahi – families growing together"

HE AHA TE MEA NUI O TE AO  
WHAT IS THE MOST IMPORTANT THING IN THE WORLD?  
HE TANGATA, HE TANGATA, HE TANGATA  
IT IS THE PEOPLE, IT IS THE PEOPLE, IT IS THE PEOPLE

2022 has had its moments (So. Many. Illnesses!) but looking back, my highlights reel is dominated by the amazing Playcentre people! The pēpē who light up the room with their coos, the tamariki who have us in stitches with their antics, the parents who are always there with smiles, understanding, and the offer of a coffee, and the grandparents, sharing their skills, experience, and support. Our people are the lifeblood of our playcentre and the reason we keep coming back! We see you all and thank you for being part of our Playcentre whānau.

I would like to particularly acknowledge our outgoing president, Jay Fowlds, who has been such a steady hand, guiding our Playcentre waka through the turbulent waters of Covid, amalgamation with Warrington Playcentre, as well as the ongoing changes with Playcentre Aotearoa Governance. Jay has done this all with incredibly careful consideration, gentleness, insight and respect. We are so lucky to have had her in the President's role for so long, and are even more lucky that she continues to be part of Playcentre! Jay is now one of our Rōpū Representatives and is working hard to ensure Playcentre Aotearoa continues to honour its history of "true bi-culturalism, not little-bit-ism" (Jay's words!) Kia ora Jay for all you have done and all you continue to do.

Sessions are Mon, Tue and Wed, 8.45am – 12.15pm. Last 2022 session is Monday 19/12/22. Please find us on Facebook (Blueskin Playcentre), at <https://www.playcentre.org.nz/centre/blueskin/>, or at blueskinplaycentre88@gmail.com. We will be back in the sandpit on Monday 30 January 2023 – come join us for a play!

Aroha nui,

**Blueskin Playcentre**







Waitati Music Festival



Waitati Music Festival



Warrington School Camp



Warrington School



Warrington School Camp