



**ALL-SEASON
OUTDOOR
KITCHENS**

Outdoor Living Collection



TABLE OF CONTENTS

FIRE PITS & FIREPLACES

| | |
|--------------------------------------|----|
| Serafina Fire Pit..... | 4 |
| Belvedere Fire Pit..... | 5 |
| Fire Pit with Verona Wall..... | 6 |
| Encore Fire Pit..... | 7 |
| Ovation Fire Pit..... | 8 |
| SG Grande Fire Pit..... | 9 |
| SG Linear Fire Pit..... | 9 |
| Triumph Fire Pit..... | 9 |
| LUME Surround..... | 10 |
| Sanctuary Series..... | 10 |
| Cowboy Cauldron..... | 11 |
| FireGear Accessories..... | 12 |
| LUME Drop-Ins..... | 14 |
| Fireplace with Verona Wall..... | 15 |
| Mini Fireplace with Verona Wall..... | 15 |
| Jr Fireplace with Verona Wall | 15 |
| Kalea Bay Fireplace..... | 16 |

OUTDOOR DINING

| | |
|--|----|
| Grill Island Deluxe with Verona Wall..... | 17 |
| L Shaped Kitchen with Verona Wall..... | 18 |
| Nantucket Kitchen Island..... | 19 |
| Wood Fired Oven with Verona Wall..... | 20 |
| Segmental Kitchen Systems..... | 21 |
| Outdoor Dining Packages..... | 22 |
| NEW! Hybrid Oven & Quest Grill..... | 22 |
| Stainless Appliances..... | 23 |
| Stainless Accessories..... | 26 |
| Essenze di Luce..... | 29 |
| Dimplex® Heaters..... | 30 |
| Pergolas..... | 31 |



WOOD

If you prefer the smell and crackle of logs burning in the style of an old-fashioned campfire, the nostalgic charm of the Standard Wood option is for you.

SMOKE-LESS WOOD

For a wood-burning experience with less smoke, choose a double wall system with a smoke-less insert. Rising hot air exits the wall cavity through tiny holes in the top of the insert which reduces smoke.

GAS

If you prefer the experience of a gas-burning fire, we offer the flexibility of choosing propane or natural gas. Further customize your fire vision with multiple ignition-type options. Packages include vent kits and control panels.



GRANITE CITY BLEND
Serafina Fire Pit



SERAFINA FIRE PIT

There is something magical about sitting around the fire pit. The Serafina Fire Pit provides a charming focal point for entertaining with family and friends.

| | OUTSIDE DIAMETER | HEIGHT | LBS/PALLET |
|----------------|------------------|--------|------------|
| WITHOUT COPING | 48" | 16" | 1,350 |
| WITH COPING | 51½" | 19" | 1,714 |



GRANITE CITY BLEND



GRAPHITE PEARL BLEND*



TRAVERTINA*



WESTCHESTER BLEND

Also available in the following:
(color swatches on pg. 146-147)

Adobe Blend Fire Island Blend
Bluestone* Golden Brown Blend
Crab Orchard Blend Oyster Blend



COPING OPTIONS:



BLUESTONE



BROWN



GIRONDE*

CHOOSE YOUR WOOD OR GAS PACKAGE:

| WOOD | Full Pallet Wall Stone | NES Round Insert | Smoke-less Metal Insert | Smoke-less Stainless Steel Insert | Rockface Coping |
|-----------------|------------------------|------------------|-------------------------|-----------------------------------|-----------------|
| Wood Standard 1 | ✓ | ✓ | | | |
| Wood Standard 2 | ✓ | ✓ | | | ✓ |
| SMOKE-LESS | | | | | |
| Smoke-less 1 | ✓ | | ✓ | | |
| Smoke-less 2 | ✓ | | ✓ | | ✓ |
| Smoke-less 3 | ✓ | | | ✓ | |
| Smoke-less 4 | ✓ | | | ✓ | ✓ |

| GAS | Full Pallet Wall Stone & Coping | Lava Rocks ² (min qty) | Match Throw Burner Kit | TPSI Burner Spark Ignition Kit | TFS Burner w/ remote | Deluxe Brass Match Throw | Deluxe Brass AWS |
|----------------------------------|---------------------------------|-----------------------------------|------------------------|--------------------------------|----------------------|--------------------------|------------------|
| *Deluxe Match Throw ¹ | ✓ | ✓ | ✓ | | | | |
| *Deluxe Spark TPSI ¹ | ✓ | ✓ | | ✓ | | | |
| Deluxe Remote TFS** | ✓ | ✓ | | | ✓ | | |
| Deluxe Brass Match Throw** | ✓ | ✓ | | | | ✓ | |
| Deluxe Brass AWS** | ✓ | ✓ | | | | | ✓ |

Vent kit included with all ignition systems.

*Control panel included

¹Includes NG to LP Piece

²Lava Rock supplied is minimum quantity needed. Must add additional or glass for finish

****Must be ordered with natural gas or liquid propane**

BELVEDERE FIRE PIT



What better way to enjoy your outdoor living area than to gather together around this cozy Belvedere Fire Pit with your loved ones. The natural textures and colors of the Belvedere seamlessly fit together with every Nicolock stone.

| OUTSIDE DIAMETER | HEIGHT | LBS/PALLET |
|------------------|--------|------------|
| 55" | 14¼" | 2,540 |



BLUESTONE



MOCHA



YORK BROWN



CHOOSE YOUR WOOD OR GAS PACKAGE:

| WOOD | Half Pallet Wall Stone | NES Round Insert | Smoke-less Metal Insert | Smoke-less Stainless Steel Insert | Belvedere Coping |
|---------------|------------------------|------------------|-------------------------|-----------------------------------|------------------|
| Wood Standard | ✓ | ✓ | | | ✓ |
| SMOKE-LESS | | | | | |
| Smoke-less 1 | ✓ | | ✓ | | ✓ |
| Smoke-less 2 | ✓ | | | ✓ | ✓ |

| GAS | Half Pallet Wall Stone | Lava Rocks ² (min qty) | Match Throw Burner Kit | TPSI Burner Spark Ignition Kit | TFS Burner w/ remote | Belvedere Coping |
|----------------------------------|------------------------|-----------------------------------|------------------------|--------------------------------|----------------------|------------------|
| *Deluxe Match Throw ¹ | ✓ | ✓ | ✓ | | | ✓ |
| *Deluxe Spark TPSI ¹ | ✓ | ✓ | | ✓ | | ✓ |
| Deluxe Remote TFS** | ✓ | ✓ | | | ✓ | ✓ |

Vent kit included with all ignition systems. Control panel included. Brass options available.
¹Includes NG to LP Piece
²Lava Rock supplied is minimum quantity needed. Must add additional or glass for finish.
**Must be ordered with natural gas or liquid propane



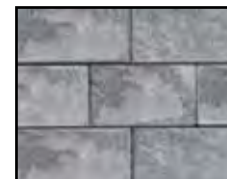
FIRE PIT WITH VERONA WALL

Complement your patio with the sleek look of the Fire Pit with Verona Wall. Add warmth to your backyard in any season! An easy fire pit to install, the Verona Fire Pit will fit in with any backyard or patio design.

| | LENGTH | WIDTH | HEIGHT | LBS/PALLET |
|----------------|--------|-------|--------|------------|
| WITHOUT COPING | 43½" | 43½" | 16" | 1,312 |
| WITH COPING | 48" | 48" | 18" | 1,600 |



CHESAPEAKE BLEND*



GRANITE CITY BLEND



GRAPHITE PEARL BLEND*



OCEANIC BLUE*



SOUTH BAY BLEND



TRAVERTINA*



WESTCHESTER BLEND



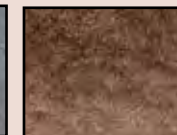
Also available in the following:
(color swatches on pg. 148-149)

Adobe Blend
Bluestone*
Charcoal
Crab Orchard Blend
Golden Brown Blend
Oyster Blend

COPING OPTIONS:



BLUESTONE



BROWN



GIRONDE*

CHOOSE YOUR WOOD OR GAS PACKAGE:

| WOOD | Half Pallet Wall Stone | Square Insert | Smoke-less Metal Insert | Smoke-less Stainless Steel Insert | Coping |
|-----------------|------------------------|---------------|-------------------------|-----------------------------------|--------|
| Wood Standard 1 | ✓ | ✓ | | | |
| Wood Standard 2 | ✓ | ✓ | | | ✓ |
| SMOKE-LESS | | | | | |
| Smoke-less 1 | ✓ | | ✓ | | |
| Smoke-less 2 | ✓ | | ✓ | | ✓ |
| Smoke-less 3 | ✓ | | | ✓ | |
| Smoke-less 4 | ✓ | | | ✓ | ✓ |

| GAS | Half Pallet Wall Stone | Coping | Lava Rocks ² (min qty) | Match Throw Burner Kit | TPSI Burner Spark Ignition Kit | TFS Burner w/ remote |
|----------------------------------|------------------------|--------|-----------------------------------|------------------------|--------------------------------|----------------------|
| *Deluxe Match Throw ¹ | ✓ | ✓ | | ✓ | | |
| *Deluxe Spark TPSI ¹ | ✓ | ✓ | | | ✓ | |
| Deluxe Remote TFS** | ✓ | ✓ | | | | ✓ |

Vent kit included with all ignition systems. Control panel included. **Brass options available.**

*Control panel included

¹Includes NG to LP Piece

²Lava Rock supplied is minimum quantity needed. Must add additional or glass for finish

**Must be ordered with natural gas or liquid propane

ENCORE FIRE PIT

Celebrate every season year after year with the Encore Fire Pit! Anywhere you install it, the Encore will quickly become the favorite place for your family and friends to gather. Choosing your package is easy. Start by selecting your burn type (Wood, Smoke-less or Gas), then select from our various options.

| | BASE | TOP | HEIGHT | LBS/PALLET |
|-------------|-----------|-----------|--------|------------|
| WITHOUT TOP | | | 18" | |
| WITH TOP | 40" x 40" | 44" x 44" | 19½" | 400 |

CHOOSE YOUR TEXTURE:



BARN WOOD* LEDGE STONE STACKED STONE

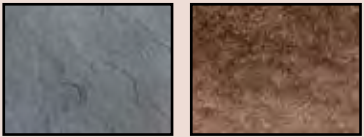
*Barn Wood texture available in Rustic Brown (color shown in texture swatch) and Weathered Wood colors. Stone textures available in Biscotti Tan, Mountain Slate and NY Bluestone colors.

CHOOSE YOUR COLOR:



BISCOTTI TAN MOUNTAIN SLATE NY BLUESTONE WEATHERED WOOD

TOP OPTIONS:



BLUESTONE BROWN



LEDGE STONE | NY BLUESTONE

CHOOSE YOUR WOOD OR GAS PACKAGE:

| WOOD | 4 Panels and Connectors | Stone-Face Top | Smoke-less Metal Insert | Smoke-less Stainless Steel Insert |
|--------------|-------------------------|----------------|-------------------------|-----------------------------------|
| | | | | |
| SMOKE-LESS | | | | |
| Smoke-less 1 | ✓ | ✓ | ✓ | |
| Smoke-less 2 | ✓ | ✓ | | ✓ |

| GAS | 4 Panels and Connectors | Stone-Face Top | Lava Rocks ² (min qty) | Match Throw Burner Kit | TPSI Burner Spark Ignition Kit | TFS Burner Kit w/ remote |
|----------------------------------|-------------------------|----------------|-----------------------------------|------------------------|--------------------------------|--------------------------|
| | | | | | | |
| *Deluxe Match Throw ¹ | ✓ | ✓ | ✓ | ✓ | | |
| *Deluxe Spark TPSI ¹ | ✓ | ✓ | ✓ | | ✓ | |
| Deluxe Remote TFS** | ✓ | ✓ | ✓ | | | ✓ |

Vent kit included with all ignition systems. Control panel included. **Brass options available.**
*Control panel included
¹Includes NG to LP Piece
²Lava Rock supplied is minimum quantity needed. Must add additional or glass for finish
**Must be ordered with natural gas or liquid propane

VERTICAL PANEL TECHNOLOGY

Vertical Panel Technology is the smart alternative to block and stone masonry. Reinforced concrete panels and an easy installation process makes constructing outdoor living spaces quick and affordable. This technology enables you to choose the texture, profile and color palette to fit the natural landscape of any backyard or outdoor setting. Reduce material waste and environmental impact, while delivering the highest quality vertical masonry structures.



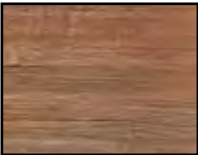
LEDGE STONE | NY BLUESTONE

OVATION FIRE PIT

Every season is the season for the Ovation. Easily installed, the Ovation can create warmth and ambiance at your home tonight! Choosing your package is easy. Start by selecting your burn type (Wood, Smoke-less or Gas), then select from our various options.

| | BASE | TOP | HEIGHT | LBS/PALLET |
|-------------|--------------|--------------|--------|------------|
| WITHOUT TOP | | | 18" | |
| WITH TOP | 40" DIAMETER | 44" DIAMETER | 19½" | 345 |

CHOOSE YOUR TEXTURE:



BARN WOOD*



LEDGE STONE



STACKED STONE

*Barn Wood texture available in Rustic Brown (color shown in texture swatch) and Weathered Wood colors. Stone textures available in Biscotti Tan, Mountain Slate and NY Bluestone colors.

CHOOSE YOUR COLOR:



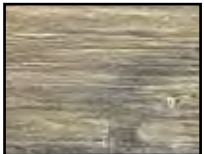
BISCOTTI TAN



MOUNTAIN SLATE



NY BLUESTONE



WEATHERED WOOD

TOP OPTIONS:

BLUESTONE

BROWN



CHOOSE YOUR WOOD OR GAS PACKAGE:

| WOOD | 2 Panels and Connectors | Stone-Face Top | Smoke-less Metal Insert | Smoke-less Stainless Steel Insert |
|--------------|-------------------------|----------------|-------------------------|-----------------------------------|
| | | | | |
| SMOKE-LESS | | | | |
| Smoke-less 1 | ✓ | ✓ | ✓ | |
| Smoke-less 2 | ✓ | ✓ | | ✓ |

| GAS | 2 Panels and Connectors | Stone-Face Top | Lava Rocks ² (min qty) | Match Throw Burner Kit | TPSI Burner Spark Ignition Kit | TFS Burner Kit w/ remote |
|----------------------------------|-------------------------|----------------|-----------------------------------|------------------------|--------------------------------|--------------------------|
| | | | | | | |
| *Deluxe Match Throw ¹ | ✓ | ✓ | ✓ | ✓ | | |
| *Deluxe Spark TPSI ¹ | ✓ | ✓ | ✓ | | ✓ | |
| Deluxe Remote TFS ^{**} | ✓ | ✓ | ✓ | | | ✓ |

Vent kit included with all ignition systems. Control panel included. **Brass options available.**

*Control panel included

¹Includes NG to LP Piece

²Lava Rock supplied is minimum quantity needed. Must add additional or glass for finish

****Must be ordered with natural gas or liquid propane**

VERTICAL PANEL TECHNOLOGY

Vertical Panel Technology is the smart alternative to block and stone masonry. Reinforced concrete panels and an easy installation process makes constructing outdoor living spaces quick and affordable. This technology enables you to choose the texture, profile and color palette to fit the natural landscape of any backyard or outdoor setting. Reduce material waste and environmental impact, while delivering the highest quality vertical masonry structures.

VERTICAL PANEL
TECHNOLOGY



SOUTH BAY BLEND

SG GRANDE FIRE PIT

| LENGTH | WIDTH | HEIGHT | TOP HEIGHT | LBS/PALLET |
|--------|-------|--------|------------|------------|
| 62¼" | 40" | 24" | 1¼" | 3,500 |

- INCLUDES:**
- 30 SF Stonegate® Wall
 - 44" x 66" Granite Top
 - 1 NPS 14" x 20" Access Door w/ Vents
 - 1 Paver Vent 6LNTS
 - 1 TPSI-LPK #35
 - 1 Paver CP-TPSI
 - 1 LOF-3612HTPSI-N (12" x 36" linear burner)
 - Lava Rocks

GRANITE TOP



Caledonia



BLUESTONE

SG LINEAR FIRE PIT

| LENGTH | WIDTH | HEIGHT | TOP HEIGHT | LBS/PALLET |
|--------|-------|--------|------------|------------|
| 52¼" | 30" | 18" | 1¼" | 3,200 |

- INCLUDES:**
- 30 SF Stonegate® Wall
 - 34" x 56" Granite Top
 - 1 Paver Vent 6LNTS
 - 1 TPSI-LPK #35
 - 1 Paver CP-TMSI/TPSI
 - 1 LOF-30HTPSI-N (10" x 30" linear burner)
 - Lava Rocks

GRANITE TOP



Caledonia



BRICKFACE | BISCOTTI TAN

TRIUMPH FIRE PIT

| LENGTH | WIDTH | HEIGHT | TOP HEIGHT | LBS/PALLET |
|--------|-------|--------|------------|------------|
| 62½" | 40" | 24" | 1¼" | 750 |

- INCLUDES:**
- 4 GFRC Wall Panels
 - 4 GFRC Corner Pieces
 - 44" x 66" Granite Top
 - 1 NPS 14" x 20" Access Door w/ Vents
 - 1 Paver Vent 4LNTS
 - 1 TPSI-LPK #35
 - 1 FG-32LPHRK Propane Regulator & Hose
 - 1 LOF-36HTPSI-N (12" x 36" linear burner)
 - Lava Rocks

GRANITE TOP



Caledonia



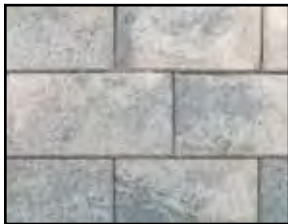
CHESAPEAKE BLEND*



GRANITE CITY BLEND



GRAPHITE PEARL BLEND*



OCEANIC BLUE*



SOUTH BAY BLEND



TRAVERTINA*



WESTCHESTER BLEND

Also available in the following:
(color swatches on pg. 148-149)

Adobe Blend
Bluestone*
Charcoal
Crab Orchard Blend
Golden Brown Blend
Oyster Blend



CHOOSE YOUR TEXTURE:



BRICKFACE



STACKED STONE

CHOOSE YOUR COLOR:



BISCOTTI TAN



HARBOR GRAY*



NY BLUESTONE*

*Harbor Gray not available in Stacked Stone. NY Bluestone not available in Brickface.



SANCTUARY SERIES



**All prices shown are
Delivered & Assembled.
Cash & Carry prices are 10% off.**



***WOOD FIRED SURROUND* (NO GAS LINE REQUIRED)**

LUME SURROUND

FEATURES:

- Smoke-less Insert
- Dimensions: 42" Diameter x 18" H
- Base Width: 20" W
- Interior Diameter: 23½" W

\$2,049



SANCTUARY 76

FEATURES:

- Ignition Systems: MT or TPSI
- Dimensions: 76" L x 38" W x 16" H
- Choose between Natural Gas (NG) and Propane (LP)
- 125,000 BTUs

MT \$3,989

TPSI \$4,819

AWS \$7,109



SANCTUARY 2

FEATURES:

- Ignition Systems: MT, TPSI or AWS
- Dimensions: 39" Diameter x 18" H
- Choose between Natural Gas (NG) and Propane (LP)
- 75,000 BTUs

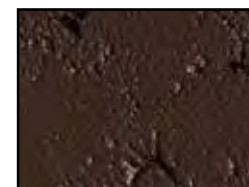
MT \$2,459

TPSI \$3,349

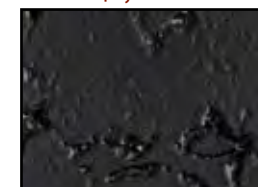
AWS \$6,039



ARCTIC



CHOCOLATE



RAVEN



SLATE

In a class of its own, the Lume Surround encases a smoke-less, woodburning fire pit insert within a large, rounded GFRC bowl, creating a rustic yet modern aesthetic reminiscent of the Olympic flame itself. For purists who prefer the crackle and smell of logs burning, but appreciate a uniquely sleek look, this gasless fire pit is available in four fabulous colors. As its name suggests, everyone will surround this focal point in your outdoor space. Strike a match. Let the games begin.



SANCTUARY 1

FEATURES:

- Ignition Systems: MT, TPSI or AWS
- Dimensions: 56" W x 38" W x 16" H
- Choose between Natural Gas (NG) and Propane (LP)
- 75,000 BTUs AWS and TPSI | 100,000 BTUs MT

MT \$3,059

TPSI \$4,039

AWS \$6,699



SANCTUARY 3

FEATURES:

- Ignition Systems: MT, TPSI or AWS
- Dimensions: 29" Diameter x 14" H
- Choose between Natural Gas (NG) and Propane (LP)
- 75,000 BTUs

MT \$1,629

TPSI \$2,499

AWS \$5,209





COWBOY CAULDRON

FIRE PITS & FIREPLACES



Say “Howdy!” to the Cowboy Cauldron –the world’s finest fire pit and grill.™ And possibly the coolest thing you ever did see. Channel your inner wrangler and treat your family and friends to endless entertainment and moments of meaningful interaction with one of these beautiful, versatile, and durable cauldrons. Each Cowboy Cauldron is painstakingly built by hand from solid plate steel and functions as a combination of fire pit, grill, and cooking vessel. It’s built to outlive you and last for generations to come. Whatever your lifestyle, there is a cauldron that fits it. You can take it to campgrounds, beaches, lakeshores, ski hills, tailgate parties, in the RV, and to other places where adventure awaits. Or settle it into your backyard and let the fun begin as your favorite people gather ‘round it. Be forewarned...you’re gonna need more chairs! Happy trails...



24 IN. DIAMETER / 35 LB. BASIN

The Dude® \$1,048

This smaller cauldron is huge on adventure. It is lightweight, convenient, mobile, and affordable with segmented legs for easier transport. Its 24”, 35 lb. basin brings the heat and draws the crowds wherever it goes – camping, tailgate parties, ski hills, the beach, or on your patio. Scaled to fit almost any lifestyle. You’ll wonder how you ever lived without it.

FEATURES:

- Solid Steel Construction
- Segmented, 2-Piece Legs
- Use as Fire Pit, Grill, or Cooking Vessel

INCLUDED:

- Cauldron Basin
- Tripod Frame
- Suspension Chain
- Charcoal Grate
- Cooking Grill
- Rain Cover



30 IN. DIAMETER / 75 LB. BASIN

The Urban Cowboy \$2,098

The most versatile cauldron. Its 30” basin provides your crew with plenty of warmth to extend your outdoor life by weeks in the fall and spring. More than a cozy heat source, this cauldron really shines as a grill and cook pot--adding a western flair, a haunting vibe, or a touch of sophistication to any gathering at home or on the road. Though slightly larger, one person can still easily transport it, so you don’t have to leave home without it.

FEATURES:

- Solid Steel Construction
- Perfectly Proportioned
- Multipurpose Fire Pit, Grill, Cooking Vessel

INCLUDED:

- Cauldron Basin
- Tripod Frame
- Suspension Chain
- Charcoal Grate
- Cooking Grill
- Rain Cover

ALSO AVAILABLE:

The Wrangler 36 IN. DIAMETER / 130 LB. BASIN



\$3,148

The Ranch Boss 42 IN. DIAMETER / 220 LB. BASIN



4,148

All prices shown are Delivered & Assembled. Cash & Carry prices are 10% off. 11

Nicolock is a master Firegear distributor. Please visit Firegearoutdoors.com for a complete selection of products.



MEDIA



GAS PIPES



WARRANTY



FIREGEAR

GLASS **Large Reflective Glass \$59** **Broken Glass \$39**

REFLECTIVE Mirror finish broken reflective. Approx. 1/2" to 3/4" in size 10lb jug

BROKEN Large broken. Approx. 1/2" to 3/4" in size 10lb jug

LARGE REFLECTIVE GLASS COLORS



BLACK



BRONZE



COBALT



COPPER



SILVER

BROKEN GLASS COLORS



BLACK



COPPER



CRYSTAL

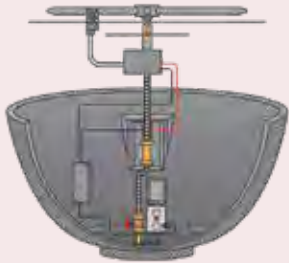


DARK BLUE



LIGHT BLUE

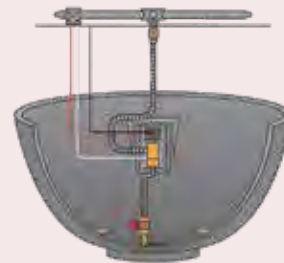
AWS IGNITION



MT IGNITION



TPSI IGNITION



MATCH THROW



AVAILABLE IN ROUND, SQUARE AND LINEAR

TPSI SPARK IGNITION



AVAILABLE IN ROUND, SQUARE AND LINEAR

TFS W/ REMOTE



AVAILABLE IN ROUND, SQUARE AND LINEAR

BRASS AWS, MT & TPSI



H-BURNER



T-BURNER



LAVA ROCK



Mined from the earth, these dark rocks contrast beautifully against a bright flame. Each rock is approximately 1" to 2" in diameter. 10lb bag / 50lb bag

LAVA STONE



Made from tumbled lava rock, these stones lend a casual elegance. Each stone is approximately 1" to 2" in diameter 40lb bag

SPIT FIRE



SEDONA



IRONWOOD STEEL



STAINLESS STEEL LIDS

ROUND

| MODEL | DIMENSIONS | DESIGNED TO FIT |
|----------------|----------------------|-----------------------------|
| Round LID-19R2 | 22" Diameter x 2.5"H | Ovation Gas |
| Round LID-25R2 | 28" Diameter x 2.5"H | FPB-25R Series |
| Round LID-29R2 | 32" Diameter x 2.5"H | Ovation Gas or Serafina Gas |
| Round LID-33R2 | 36" Diameter x 2.5"H | FPB-33R Series |
| LID-LUME29R | 27" Diameter x 1¼"H | Serafina Wood |
| LID-LUME34R | 32" Diameter x 1¼"H | Belvedere Wood |



SQUARE

| MODEL | DIMENSIONS | DESIGNED TO FIT |
|----------------|-------------|-----------------------------|
| Square LID-20S | 22"W x 1½"H | Encore Gas |
| Square LID-26S | 28"W x 1½"H | Verona & Encore Wood or Gas |
| Square LID-32S | 32"W x 1½"H | FPB-32S Series |
| Square LID-38S | 38"W x 1½"H | FPB-38S Series |



LINEAR H

| MODEL | DIMENSIONS | DESIGNED TO FIT |
|-------------|----------------------|-----------------|
| LID-LOF2412 | 24¾"L x 14¾"W x 2⅞"H | LOF2412 |
| LID-LOF3012 | 32¾"L x 14¾"W x 2⅞"H | LOF3012 |
| LID-LOF3614 | 38¾"L x 16¾"W x 2⅞"H | LOF3614 |
| LID-LOF4214 | 44¾"L x 16¾"W x 2⅞"H | LOF4214 |
| LID-LOF4814 | 50¾"L x 16¾"W x 2⅞"H | LOF4814 |
| LID-LOF6016 | 62¾"L x 18¾"W x 2⅞"H | LOF6016 |
| LID-LOF7216 | 74¾"L x 18¾"W x 2⅞"H | LOF7216 |
| LID-LOF8416 | 86¾"L x 18¾"W x 2⅞"H | LOF8416 |
| LID-LOF9616 | 98¾"L x 18¾"W x 2⅞"H | LOF9616 |



LINEAR T

| MODEL | DIMENSIONS | DESIGNED TO FIT |
|-------------|---------------------|-----------------|
| LID-LOF2406 | 26¾"L x 8¾"W x 2⅞"H | LOF2406 |
| LID-LOF3006 | 32¾"L x 8¾"W x 2⅞"H | LOF3006 |
| LID-LOF3606 | 38¾"L x 8¾"W x 2⅞"H | LOF3606 |
| LID-LOF4806 | 50¾"L x 8¾"W x 2⅞"H | LOF4806 |
| LID-LOF6006 | 62¾"L x 8¾"W x 2⅞"H | LOF6006 |
| LID-LOF7206 | 74¾"L x 8¾"W x 2⅞"H | LOF7206 |
| LID-LOF8406 | 86¾"L x 8¾"W x 2⅞"H | LOF8406 |
| LID-LOF9606 | 98¾"L x 8¾"W x 2⅞"H | LOF9606 |



SPARK SCREENS

| MODEL | DIMENSIONS | DESIGNED TO FIT |
|---------------------------|----------------------------|--------------------|
| Square 770 Black | 30" Screen (30" x 12") | Verona & Encore |
| Round 775 Black | 30" Screen (30" x 15") | Serafina & Ovation |
| Round 775 Stainless Steel | 30" Screen (30" x 15") | Serafina & Ovation |
| Round 781 Black | 39" Screen (39" x 18") | Belvedere |
| Round 24SS | 24" Screen Stainless Steel | N/A |



GLASS WINDSHIELDS

ROUND

| MODEL | DIMENSIONS |
|---------|--------------------|
| GWS-23R | 23" Diameter x 8"H |
| GWS-32R | 32" Diameter x 8"H |
| GWS-36R | 36" Diameter x 8"H |
| GWS-38R | 38" Diameter x 8"H |
| GWS-48R | 48" Diameter x 8"H |
| GWS-60R | 60" Diameter x 8"H |



SQUARE

| MODEL | DIMENSIONS |
|----------|-------------|
| GWS-2424 | 24"W x 7½"H |
| GWS-3030 | 30"W x 7½"H |
| GWS-3838 | 38"W x 7½"H |
| GWS-4242 | 42"W x 7½"H |



LINEAR H

| MODEL | DIMENSIONS |
|----------|---------------------|
| GWS-2911 | 29½"L x 11½"W x 6"H |
| GWS-2917 | 29½"L x 17"W x 6"H |
| GWS-3511 | 35½"L x 11½"W x 6"H |
| GWS-3517 | 35½"L x 17"W x 6"H |
| GWS-4111 | 41½"L x 11½"W x 6"H |
| GWS-4119 | 41"L x 19"W x 6"H |
| GWS-5311 | 53½"L x 11½"W x 6"H |
| GWS-5319 | 53"L x 19"W x 6"H |
| GWS-6511 | 65½"L x 11½"W x 6"H |
| GWS-6521 | 65"L x 21"W x 6"H |
| GWS-7711 | 77½"L x 11½"W x 6"H |
| GWS-7721 | 77"L x 21"W x 6"H |





LUME SMOKE-LESS FIRE PIT



Transform your ordinary paver fire pit into an extraordinary smoke-less sanctuary with the LUME, a metal smoke-less fire pit insert. Enjoy the mesmerizing dance of flames without the annoyance of smoke, and create unforgettable moments in your backyard oasis. Upgrade your outdoor experience with ease, style, and the ultimate comfort of a smoke-less ambiance.

LUME DROP-INS



24"
\$744

30"
\$989

AVAILABLE IN 24" & 30" DIAMETERS
24: LUME-24R-BK | 30: LUME-30R-BK
*LID INCLUDED



24"
\$1,399

30"
\$1,779

AVAILABLE IN 24" & 30" DIAMETERS
24: LUME-MS2SR | 30: LUME-30R-SS
*LID INCLUDED



24"
\$899

LUME-24SQ-BK
*LID INCLUDED



24"
\$1,299

LUME-24SQ-SS
*LID INCLUDED

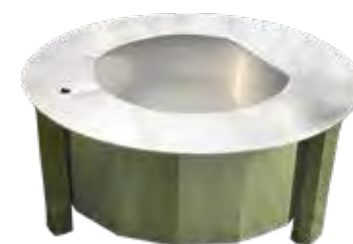
LUME FREESTANDING



21"
\$717

26"
\$1,194

AVAILABLE IN 21" & 26" DIAMETERS
21: LUME-MS1 | 26: LUME-MS2



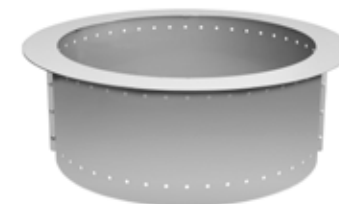
21"
\$922

26"
\$1,399

AVAILABLE IN 21" & 26" DIAMETERS
21: LUME-MS1SR | 26: LUME-MS2SR

*AVAILABLE LIDS
MS1 & MS2SR - LIDLUME-MS-A
MS1SR - LIDLUME-MS-B
MS2 - LIDLUME-MS-C

NEXT EVOLUTION SMOKE-LESS DROP-IN



29"
\$383

34"
\$450

AVAILABLE IN 29", 34" & 36" DIAMETERS
29: NES-29R | 34: NES-34R | 36: NES-36R

*AVAILABLE LIDS
LID-LUME-29R
LID-LUME-34R
LID-LUME-36R

36"
\$473



FIREPLACE WITH VERONA WALL

Gather 'round the fire day or night! Complement your patio with the sleek look of the Fireplace with Verona Wall. Add warmth to your backyard in any season! Contains everything you need to construct this stunning fireplace.

| LENGTH | WIDTH | HEIGHT | LBS/PALLET |
|--------|-------|--------|------------|
| 91" | 56" | 97" | 16,828 |



- INCLUDES:**
- 6 Pallets of Verona Wall
 - Cast Concrete Fireplace opening surround
 - Wood burning fireplace inset with single piece, brushed stainless face, stainless mesh screens with hidden pockets
 - Round top cap with mesh screen
 - Realistic textured brick liner in natural white, EZ access damper & gas log ready feature
 - 4 concrete lintels
 - Double wall flue pipe
 - Pre-cast concrete medallion



MINI FIREPLACE WITH VERONA WALL

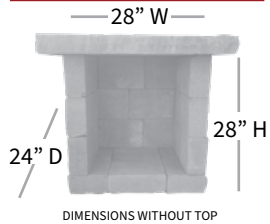
A smaller version of the Fireplace with Verona Wall but just as awesome! Enjoy the warmth all year round. Extend your outdoor living season with a toasty fire anytime!

| LENGTH | WIDTH | HEIGHT | LBS/PALLET |
|--------|-------|--------|------------|
| 48" | 40" | 82½" | 5,860 |



- INCLUDES:**
- 2 Pallets of Verona Wall
 - 4' Rockface step tread
 - 4" Rockface accent piece
 - Top piece with 8" cut out for smoke
 - Lintel with keystone
 - Firebrick recommended
 - Does not come with flue pipe (must be supplied by others if need)

OPTIONAL WOOD BOX AVAILABLE



JR FIREPLACE WITH VERONA WALL

A compact version of the Fireplace with Verona Wall with all of the fire power! Enjoy all year long!

| | LENGTH | WIDTH | HEIGHT | LBS / PALLET |
|--------------------|--------|-------|--------|--------------|
| FOOTPRINT W/O STEP | 47" | 40" | 70" | 6,003 |
| STEP | 48" | 16½" | 6" | |

- INCLUDES:**
- 2 Pallets of Verona Wall
 - Wet Cast 52" x 44"
 - Wet Cast 36" x 36"
 - Wet Cast 32" x 32"
 - Insert, Flue Pipe & Vent Cap
 - 6" x 48" x 16 ½" Rockface Step



ACCENT OPTIONS:



CHESAPEAKE BLEND*



GRANITE CITY BLEND



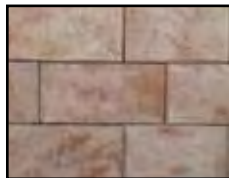
GRAPHITE PEARL BLEND*



OCEANIC BLUE*



SOUTH BAY BLEND



TRAVERTINA*



WESTCHESTER BLEND



KALEA BAY FIREPLACE

\$10,326

Perfect for entertaining or when you desire a place to retreat, relax and reconnect. Available in single-sided and see-through configurations.

| | LENGTH | WIDTH | HEIGHT | LBS/PALLET |
|-------------|--------|-------|--------|------------|
| WITHOUT TOP | 87" | 19½" | 42" | 750 |
| WITH TOP | 91½" | 24½" | 43½" | |

*Please order gas specific LP/NG



**All prices shown are
Delivered & Assembled.
Cash & Carry prices are 10% off.**

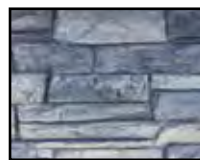
NY BLUESTONE



BISCOTTI TAN



MOUNTAIN SLATE



NY BLUESTONE

*Only offered in Ledge Stone texture

SINGLE SIDED KALEA BAY INCLUDES:

- 1- 42" high x 84" wide with cut out
- 1- 42" high x 84" wide panel (no cut out)
- 2- 42" high x 17" wide side panel
- 4- 42" high structural corner units, smooth
- 1- Cast Stone top (24½" x 91½")
- 1- 48" Kalea Bay Fireplace insert with black crushed glass Non LED

DOUBLED SIDED KALEA BAY INCLUDES:

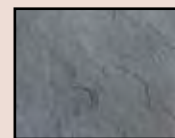
- 2- 42" high x 84" wide with cut-out
- 2- 42" high x 17" wide side panel
- 4- 42" high structural corner units, smooth
- 1- counter top (24½" x 91½")
- 1- 48" Kalea Bay Fireplace insert with black crushed glass Non LED

*Must order burner see thru conversion part #78010 separately

**Remote available, must order part #RCAF-3TX separately

***Available in LED option

TOP OPTIONS:



BLUESTONE



BROWN

GRILL ISLAND DELUXE WITH VERONA WALL

Cook up a feast on the Grill Island Deluxe with Verona Wall! A granite countertop and pro grill make this the perfect addition to your backyard patio.



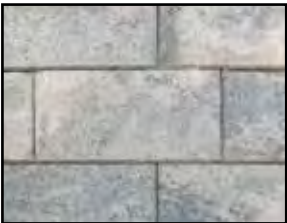
CHESAPEAKE BLEND*



GRANITE CITY BLEND



GRAPHITE PEARL BLEND*



OCEANIC BLUE*



SOUTH BAY BLEND



TRAVERTINA*



WESTCHESTER BLEND

Also available in the following:
(color swatches on pg. 148-149)
Adobe Blend
Bluestone*
Charcoal
Crab Orchard Blend
Golden Brown Blend
Oyster Blend

| | LENGTH | WIDTH | HEIGHT | LBS/PALLET |
|-------------|--------|-------|---------|------------|
| WITHOUT TOP | 79" | 32" | 36" | 6,500 |
| WITH TOP | 82" | 36" | 37 1/4" | |

INCLUDES:

- 2 Pallets of Verona Wall
- 32" Sizzler Pro Grill • cutout dimensions: 30 5/8" (W) x 8 1/2" (H) x 20 3/4" (D)
- Double-lined roll top hood
- 740 sq in. Stainless steel cooking grates, warming rack, drip pan
- Illuminated control knobs
- 14" x 20" Single Access Door • cutout dimensions: 14 1/4" (W) x 19 1/4" (H) x n/a (D)
- Granite counter top included, covers 12 sq. ft of area
- Concrete Lintels



*Please order gas
specific LP/NG

GRANITE TOP



Caledonia

**Countertop is 1 1/4" in height
***Kit also available without granite top



NEW HANDLE ON ALL STAINLESS



GOLDEN BROWN BLEND

L SHAPED KITCHEN WITH VERONA WALL

Nothing beats firing up that steak year-round with your “L” Shaped Kitchen with Verona Wall! These hard-wearing units include a stainless steel grill, stainless steel refrigerator, six-piece granite countertops and lintel. Customize for maximum enjoyment with the many accessories offered!

INCLUDES:

- 4 Pallets of Verona Wall
- 6 Piece Granite Tops
- 14” x 20” Single Access Door • cutout dimensions: 14 $\frac{1}{4}$ ” (W) x 19 $\frac{1}{4}$ ” (H) x n/a (D)
- 33” Double Access Door • cutout dimensions: 30 $\frac{1}{4}$ ” (W) x 19 $\frac{3}{8}$ ” (H) x n/a (D)
- 38” Stainless Steel TRL Grill
- 22” Standard Refrigerator • cutout dimensions: 21 $\frac{1}{10}$ ”(W) x 33 $\frac{3}{10}$ ”(H) x 21 $\frac{1}{10}$ ”(D)
- 15” Sink • cutout dimensions: 14 $\frac{3}{8}$ ”(W) x n/a (H) x 14 $\frac{3}{8}$ ” (D)
- Refrigerator Trim Kit
- Concrete Lintels

| | LENGTH INSIDE | LENGTH OUTSIDE | WIDTH | HEIGHT | LBS/PALLET |
|-------------------|---------------|----------------|-------|--------|------------|
| GRILL SIDE | 96” | 128” | 32” | 36” | 12,000 |
| REFRIGERATOR SIDE | 87” | 119” | 32” | 40” | |

**Countertop is 1 $\frac{1}{4}$ ” in height

***Kit also available without granite top



*Please order gas specific LP/NG

GRANITE TOP



Caledonia

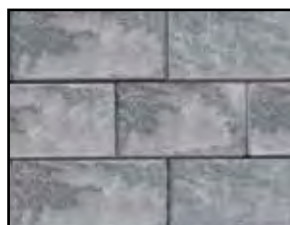
Also available in the following:
(color swatches on pg. 148-149)

Adobe Blend
Bluestone*
Charcoal

Crab Orchard Blend
Golden Brown Blend
Oyster Blend



CHESAPEAKE BLEND*



GRANITE CITY BLEND



GRAPHITE PEARL BLEND*



OCEANIC BLUE*



SOUTH BAY BLEND



TRAVERTINA*



WESTCHESTER BLEND

NANTUCKET KITCHEN ISLAND

We are changing the way outdoor kitchens are built. Engineered stone panels make it possible to have the outdoor kitchen of your dreams in one day. This system gives you the flexibility of using our grill and door combinations or you can customize with other accessories. You can choose the design, colors and stone profile of your outdoor kitchen to perfectly fit the rest of your landscape and your home.

| | |
|-------------|-----------------------|
| WITHOUT TOP | 35" x 84" x 41" |
| WITH TOP | 36½" x 86" HORIZONTAL |
| LBS/PALLET | 1,000 |



CHOOSE YOUR TEXTURE:



BARN WOOD*



LEDGE STONE



STACKED STONE

*Barn Wood texture available in Rustic Brown (color shown in texture swatch) and Weathered Wood colors. Stone textures available in Biscotti Tan, Mountain Slate and NY Bluestone colors.

CHOOSE YOUR COLOR:



BISCOTTI TAN



MOUNTAIN SLATE



NY BLUESTONE



WEATHERED WOOD

TOP OPTIONS:



BLUESTONE



BROWN

*Please order gas specific LP/NG

VERTICAL PANEL TECHNOLOGY

LEDGE STONE | NY BLUESTONE

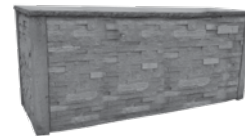
PACKAGE A INCLUDES:

- 1 Back panel
- 1 Front panel
- 4 Corners
- 2 End panels (sides)
- Top
- Drop cloth/sheet protector
- 32" Sizzler Pro Grill • cutout dimensions: 30⅝" (W) x 8½" (H) x 20¾" (D)
- 30" Double Access Door • cutout dimensions: 30¼" (W) x 19¼" (H) x n/a (D)
- 1 Strap
- 2 Tubes of adhesive



PACKAGE B INCLUDES:

- 2 Horizontal panels
- 4 Corners
- 2 End panels (sides)
- Top
- Drop cloth/sheet protector
- 1 Strap
- 2 Tubes of adhesive



**All cut outs for Package B will have to be done on site and can accommodate a variety of grills and accessories

**Package A comes with cut outs



SOUTH BAY BLEND

**All prices shown are Delivered & Assembled.
Cash & Carry prices are 10% off.**



IMPERIAL
Oven Only Option Available

- 304 stainless steel
- Black top
- Refractory brick floor
- Removable door with wood handles
- Thermostat
- Opening: 17 $\frac{1}{2}$ "
- Fits a 16" Pizza

\$3,590

ACCESSORIES INCLUDED:



DUKE
Oven Only Option Available

- 304 stainless steel
- Black top
- Refractory brick floor
- Removable door with wood handles
- Outside oven: 21" x 30 $\frac{3}{4}$ "
- Inside oven: 18" x 27 $\frac{1}{4}$ "
- Opening: 15"
- Fits a 12" personal pizza

\$2,295



WOOD FIRED OVEN WITH VERONA WALL

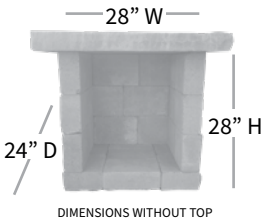
Dazzle everyone with an outdoor pizza oven! Cook up delicious pizza and a whole lot more! Leave the kitchen and cook outdoors!

- INCLUDES:**
- 2 Pallets of Verona Wall
 - 1- 30" Combo (2 drawer/1 door) enclosure cutout dimensions: 30 $\frac{1}{4}$ "(W) x 19 $\frac{1}{4}$ " (H) x 20 $\frac{3}{4}$ " (D)
 - 3 - 4" Wetcast Tops
 - Pizza Peel
 - Cleaning Brush
 - All-Weather Cover
 - Cast Stone top
 - Imperial Wood Fired Oven
 - Concrete Lintel

| | | | |
|----------------------------|---|-------------------------|---|
| INSIDE OVEN | 29 $\frac{1}{2}$ " x 32 $\frac{1}{2}$ " | OUTSIDE OVEN | 33 $\frac{1}{2}$ " x 38 $\frac{1}{4}$ " |
| TOP | 49" x 49" | BASE | 44" x 44" |
| OVERALL HEIGHT WITHOUT TOP | 99" | OVERALL HEIGHT WITH TOP | 103" |
| LBS/PALLET | 7,500 | | |



OPTIONAL WOOD BOX AVAILABLE



TOP OPTIONS:



BLUESTONE BROWN GIRONDE*

Also available in the following:
(color swatches on pg. 148-149)

- Adobe Blend
- Bluestone*
- Charcoal
- Crab Orchard Blend
- Golden Brown Blend
- Oyster Blend



CHESAPEAKE BLEND*



GRANITE CITY BLEND



GRAPHITE PEARL BLEND*



OCEANIC BLUE*



SOUTH BAY BLEND



TRAVERTINA*



WESTCHESTER BLEND

SEGMENTAL KITCHEN SYSTEMS

Create your customized outdoor dining area the way you envision it. Use our Segmental Kitchen Systems to create grill islands, kitchens, bar spaces and much more. Possibilities are endless when you choose from a variety of cabinet options and stainless appliances.

*FITS MOST MAJOR MANUFACTURERS OF GRILLS & ACCESSORIES



The Sierra



INCLUDES:

3 Drawer Cabinet
Cold Storage Cabinet
48" Grill Cabinet

\$4,499

(2) End Panel Cabinets
Trash Drawer / LP Cabinet

The Lexington



INCLUDES:

3 Drawer Cabinet
Cold Storage Cabinet
48" Grill Cabinet
(2) End Panel Cabinet

\$6,540

6" Filler Cabinet
12" Filler Cabinet
Trash Drawer / LP Cabinet
Universal Corner Cabinet

The Ultimate



INCLUDES:

3 Drawer Cabinet
Cold Storage Cabinet
48" Grill Cabinet
48" Door / Drawer Cabinet
(2) End Panel Cabinets

\$9,221

6" Filler Cabinet
12" Filler Cabinet
Trash Drawer / LP Cabinet
(2) Universal Corner Cabinets

Use one of our 3 combinations above, or choose multiple pieces below, to create your custom look:



3 Drawer Cabinet
Cold Storage Cabinet
48" Grill Cabinet
54" Grill Cabinet
48" Door / Drawer Cabinet

End Panel Cabinet
6" Filler Cabinet
12" Filler Cabinet
Side Burner Cabinet
Power Burner Cabinet

Sink Cabinet
Trash Drawer / LP Cabinet
Universal Corner Cabinet

**All prices shown are
Delivered & Assembled.
Cash & Carry prices are 10% off.**



OUTDOOR DINING PACKAGES

APPLIANCE ONLY PACKAGES
DO NOT INCLUDE WALL STONE,
VENEERS OR COUNTERTOPS

Great cooking performance, innovative features and purposeful design allow you to enjoy more time outdoors. Each stainless steel package option provides everything you need to cook like a pro: grill, burner, refrigeration and storage. Build your kitchen using any Nicolock wall or create a kitchen using the natural stone of your choice.

ALTURI KITCHEN PACKAGE INCLUDES: \$10,625



36" Alturi Built-In Grill
ALT36T



24" Deluxe Outdoor Rated
Refrigerator
SSRFR-24D



33" 3-Drawer & Access
Door Combo
SSDC3-33



Alturi Double Side Burner
w/LED Illumination
ALTSB2

TRL KITCHEN PACKAGE INCLUDES: \$6,395



32" TRL Built-In Grill
TRL32



24" Deluxe Outdoor Rated
Refrigerator
SSRFR-24S



33" 2-Drawer & Access Door
Combo
SSDC2-33



TRL Double Side Burner
w/LED Illumination
TRLSB2

SIZZLER PRO KITCHEN PACKAGE INCLUDES: \$4,104



32" Sizzler Pro Built-In Grill
SIZPRO32



22" Compact Refrigerator
SSRFR-22S



33" Double Access Door
SSDD-33



Sizzler Pro Double Side Burner
w/LED Illumination
SIZPROB2

NEW!



HYBRID OVEN \$3,299

SUMMERSET

Way beyond just fabulous pizza, this versatile hybrid oven offers interchangeable gas and woodburning cooking options so you can make everything from appetizers to dessert. Stop running inside and stay with your guests. You'll wonder how you ever lived without it.

FEATURES:

- Fuel gas/wood
- #304 Stainless steel tube L shaped gas burner
- #304 Stainless steel jet type burner for igniting wood
- Gas burner 38,000 BTUs when cooking with gas only
- Wood burner gas started rated at 38,000 BTUs
- 39 Sq. In. of cooking surface
- Stainless steel wood rack & ash catch
- Temperature up to 1022°F / 550°C
- Cooking stone made from Cordierite
- Digital thermometer measures oven ambient temperature
- Unit equipt with 2 meat cooking temperature probes
- Material exterior: SPCC with matte black high heat powder coating
- Material interior: 443 stainless steel
- Stainless steel chimney (color subject to change to black with high temp powder coating)
- Knobs for burners marked high/low
- Adjustable feet
- Available in NG or LP models
- ETL certified

| | |
|-------------------------|-----------|
| BODY DEPTH | 26¾" |
| BODY HEIGHT (WITH FEET) | 22¾" |
| CHIMNEY HEIGHT | 18½" |
| TOTAL HEIGHT | 41¼" |
| WIDTH | 32¼" |
| OPENING DIMENSIONS | 21" x 10" |
| WEIGHT | 187 lbs |

NEW!



QUEST GRILL

SUMMERSET

Your quest for the perfect grill ends right here! Packed with standard features that have you covered from hamburgers to rotisserie, and from warming trays to easy-clean functionality, the Quest line is a grill master's dream.

FEATURES:

- 18-gauge double-lined hood w/ spring assist
- #304 stainless steel full-width hood handle
- 10,500 BTU angled infrared rear burner
- Rotisserie kit with 40 lb. motor included
- Heavy-duty 8mm square cooking grates
- Waterfall LED strip over knobs
- Easy-clean briquette system
- Removable, dishwasher safe drip tray
- Warming rack storage in drip-tray
- Includes weather-proof vinyl grill head cover
- Gold standard lifetime warranty

OPTIONAL ADD-ONS:

- Rib rack insert
- In-set griddle plate (replaces 1 grate)
- Freestanding cart
- Weather-proof vinyl freestanding cart cover

**All prices shown are
Delivered & Assembled.
Cash & Carry prices are 10% off.**

30"
\$3,199

**AVAILABLE
IN 3 SIZES:**
30" QUEST - QST30
TOTAL BTU's: 43,500

36"
\$3,599

36" QUEST - QST36
TOTAL BTU's: 60,000

42"
\$4,199

42" QUEST - QST42
TOTAL BTU's: 76,500

SIZZLER



26" Sizzler Built-In Grill
SIZ26

\$1,454



32" Sizzler Built-In Grill
SIZ32

\$1,815



40" Sizzler Built-In Grill
SIZ40

\$2,180



Sizzler Double Side Burner
SIZSB2

\$595



Sizzler Cart
CART-SIZ26 | CART-SIZ32 |
CART-40

\$1,028



Sizzler Deluxe Cart
CART-SIZ32-DC | CART-SIZ40-
DC

\$1,376 / \$1,474

SUMMERSET



SIZZLER PRO



32" Sizzler Pro Built-In Grill
SIZPRO32

\$2,240



40" Sizzler Pro Built-In Grill
SIZPRO40

\$2,665



Sizzler Pro Double Side Burner
w/LED Illumination
SIZPROSB2

\$710



Sizzler Pro Power Burner
SIZPROPB

\$1,349

**All prices shown are Delivered & Assembled.
Cash & Carry prices are 10% off.**

TRL



32" TRL Built-In Grill
TRL32

\$2,665



38" TRL Built-In Grill
TRL38

\$3,510



44" TRLD Built-In Grill
TRLD44

\$4,595



TRL Power Burner w/LED Illumination
TRLPB2

\$1,540



TRL Double Side Burner
w/LED Illumination
TRLSB2

\$710



TRL Sear Side Burner
TRLSS

\$710



TRL Cart
CART-TRL32 | CART-TRL38

\$1,049 / \$1,051



TRL Deluxe Cart
CART-TRL32-DC | CART-TRL38-
DC CART-TRL44-DC

\$1,319 / \$1,615

ALTURI



30" Alturi Built-In Grill
ALT30T

\$4,605



36" Alturi Built-In Grill
ALT36T

\$5,820



42" Alturi Built-In Grill
ALT42T

\$6,520



Alturi Power Burner
w/LED Illumination
ALTPB2

\$2,365



Alturi Double Side Burner
w/LED Illumination
ALTSB2

\$1,420



Alturi Sear Side Burner
w/LED Illumination
ALTSS

\$1,420



Alturi 30" Cart
CART-ALT30

\$1,049



Alturi 36" & 42" Cart
CART-ALT36 | CART-ALT42

\$1,925 / \$2,180

QUEST



30" Quest Built-In Grill
QST30

\$3,199



36" Quest Built-In Grill
QST36

\$3,599



42" Quest Built-In Grill
QST42

\$4,199

GRIDDLE



30" Gas Griddle
GRID30

\$2,249



14" x 17.5" Griddle Plate
SSGP-18

\$296

RESORT



30" Built-In Grill
SBG30

\$3,145



Resort Pedestal
SBG3-PED

\$1060



Resort Cart
CART-ALT30

\$1305

OUTDOOR OVENS



Oven Built In
SS-OVBI

\$1,299



Hybrid Oven

\$3,299



ATLAS



36" Atlas Built-In Grill
ATS36
\$3,795



Atlas Double Side Burner
ATSSB2
\$1,530



Atlas Power Burner
ATSPB2
\$2,560



Atlas Freestanding Cart
ATSFS
\$5,590

AMERICAN-MADE-GRILLS



ENCORE



36" Encore Built-In Grill
ENC36
\$9,650



54" Encore Built-In Grill
ENC54
\$12,900



Encore Power Burner
ENCPB2
\$2,560



Encore Double Side Burner
ENC5B2
\$1,530



Freestanding Encore 36"
ENCFS36
\$14,309



Freestanding Encore 54"
ENCFS54
\$18,622

MUSCLE



36" Muscle Built-In Grill
MUS36
\$9,650



54" Muscle Built-In Grill
MUS54
\$12,900



Muscle Power Burner
MUSPB2
\$2,560



Muscle Double Side Burner
MUS5B2
\$1,683



Freestanding Muscle 36"
MUSFS36
\$14,309



Freestanding Muscle 54"
MUSFS54
\$18,622

ESTATE



30" Estate Built-In Grill
EST30
\$5,550



36" Estate Built-In Grill
EST36
\$7,240



42" Estate Built-In Grill
EST42
\$7,960



Estate Double Side Burner
EST5B2
\$1,530



Estate Power Burner
ESTPB2
\$2,560



Freestanding Estate 30"
ESTFS30
\$7,098



Freestanding Estate 36" & 42"
ESTFS36 | ESTFS42
**36" - \$9,406
42" - \$10,298**

SUNFIRE



32" SunFire Built-In Grill
SF432
\$2,842



38" SunFire Built-In Grill
SF538
\$5,126



Single Side Burner
SFSB1
\$733



Double Side Burner
w/LED Illumination
SFPB2
\$1,272



Power Burner
SFPB
\$2,633



SunFire 32" Freestanding Grill
CART-SF-432
AVAILABLE IN DELUXE | CART-SF432-DC
\$1,471



SunFire 38" Freestanding Grill
CART-SF-538
AVAILABLE IN DELUXE | CART-SF538-DC
\$1,575

SUN FIRE
GRILLS





TRUEFLAME



25" TrueFlame Built-in Grill
TF25
TRUEFLAME NOT AVAILABLE IN MD OR VA
\$1,856



32" TrueFlame Built-in Grill
TF32
TRUEFLAME NOT AVAILABLE IN MD OR VA
\$2,340



40" TrueFlame Built-in Grill
TF40
TRUEFLAME NOT AVAILABLE IN MD OR VA
\$2,835



Double Side Burner
TFSB2
TRUEFLAME NOT AVAILABLE IN MD OR VA
\$742



Power Burner
TFPB
TRUEFLAME NOT AVAILABLE IN MD OR VA
\$1,349



TrueFlame Griddle Built-in
TFG30
TRUEFLAME NOT AVAILABLE IN MD OR VA
\$2,249



TrueFlame Grill - Freestanding
25" TF25FS | 32" TF32FS | 40" TF40FS
TRUEFLAME NOT AVAILABLE IN MD OR VA
\$3,050 / \$3,582

GRILL & SIDE BURNER LINERS



Grill Liner
GL-AG30 | GL-AG36 | GL-AG42
GL-TRL32 | GL-TRL38 | GL-TRLD44
GL-SIZ26 | GL-SIZ32 | GL-SIZ40
GL-GRID30




Side Burner Liner
GL-SIZB2 | GL-TRLB2 | GL-TRLPB2
GL-ASB2 | GL-APB2 | GL-SIZPROPB

Call for Pricing

VENT HOODS



Vent Hoods
36" SSVH-36
48" SSVH-48
60" SSVH-60



12" Duct Cover
36" SSVH-36-DC
48" SSVH-48-DC
60" SSVH-60-DC



Spacer Template
36" SSVH-36-SPT
48" SSVH-48-SPT
60" SSVH-60-SPT



Spacer Brackets (4" & 8")
SSVH-36-SP4
SSVH-48-SP4
SSVH-60-SP4
SSVH-36-SP8
SSVH-48-SP8
SSVH-60-SP8

Call for Pricing



BARS & SINKS



19" Undermount Sink
SSNK-19U

\$510



15" Drop-in Sink
SSNK-15D

\$290



30" Lighted Beverage & Prep Station
SSBC-30L

\$1,590



32" Outdoor Rated Farmhouse Sink
SSNK-32FH

\$795



17" 1.7C Drop-in Cooler
SSIC-17

\$850



28" 2.7C Drop-in Cooler
SSIC-28

\$1,195

REFRIGERATION



15" Outdoor Rated Refrigerator
with Glass Door
SSRFR-15G

\$1,805



15" Outdoor Rated Refrigerator
SSRFR-15S

\$1,805



15" Outdoor Rated Dual Zone
Wine Cooler
SSRFR-15WD

\$1,920



15" Outdoor Rated Single Zone
Wine Cooler
SSRFR-15W

\$1,805



22" Compact Refrigerator
SSRFR-22S

\$699



22" Deluxe Compact Refrigerator
SSRFR-22D

\$899



24" Outdoor Rated Refrigerator
SSRFR-24S

\$1,890



24" Outdoor Rated 2-Drawer
Refrigerator
SSRFR-24DR2

\$2,995



24" Deluxe Outdoor Rated
Refrigerator
SSRFR-24D

\$2,250



24" Outdoor Rated Refrigerator
with glass door
SSRFR-24G

\$1,820



15" Ice Maker
SSIM-15

\$2,795



24" Outdoor Rated Dual Zone
Wine Cooler
SSRFR-24WD

\$2,755



24" Deluxe Outdoor Rated
Wine Cooler
SSRFR-24W

\$2,640



24" Deluxe Outdoor Rated
Kegerator Single Tower
SSRFR-24DK1
ALSO AVAILABLE IN DOUBLE TOWER: SSRFR-24DK2

\$3,360

ACCESS DOORS



33" Vented Double Access Door
SSDD-33V

\$445



26" Double Access Door
SSDD-26

\$375



30" Double Access Door
SSDD-30

\$435



33" Double Access Door
SSDD-33

\$455



36" Double Access Door
SSDD-36

\$495



39" Double Access Door
SSDD-39

\$535



42" Double Access Door
SSDD-42

\$575



45" Double Access Door
SSDD-45

\$630



16" Vertical Access Door
SSDV-16

\$240



18" Vertical Access Door
SSDV-18

\$265



20" Vertical Access Door
SSDV-20

\$335



22" Horizontal Access Door
SSDH-22

\$280



27" Horizontal Access Door
SSDH-27

\$335

*STAINLESS ACCESSORIES APPLY ACROSS ALL BRANDS

All prices shown are Delivered & Assembled. Cash & Carry prices are 10% off.



DOOR & DRAWER COMBOS



30" 2-Drawer & Access Door Combo
SSDC2-30

\$890



33" 2-Drawer & Access Door Combo
SSDC2-33

\$935



36" 2-Drawer & Access Door Combo
SSDC2-36

\$1,045



42" 2-Drawer & Access Door Combo
SSDC2-42

\$1,095



33" 3-Drawer & Access Door Combo
SSDC3-33

\$1,135



33" 2-Drawer & LP Tank Pullout
Drawer Combo
SSDC2-33LP

\$1,130



17" Vertical 2-Drawer & Paper
Towel Holder Combo
SSTDC-17

\$935

STORAGE DRAWERS



17" Single Drawer
SSDR1-17

\$445



17" Double Drawer
SSDR2-17

\$820



17" Triple Drawer
SSDR3-17

890



20" Vented Liquid Propane Tank or
Trash Drawer
SSDR1-20LP

\$615



20" Trash Pullout Drawer
SSTD1-20

\$700



20" Trash & Recycling 2-Bin
Pullout Drawer
SSTD2-20

\$765



17" Paper Towel Holder
SSTH-17

\$325



26" Utensil Drawer
SSDR1-26U

\$445



36" Warming Drawer
SSWD-36

\$1,525



32" Double Horizontal Drawer
SSDR2-32H

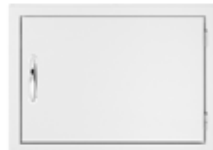
\$700

MASONRY STORAGE



20" Masonry Vertical Access Door
SSDV-20M

\$365



27" Masonry Horizontal Access Door
SSDH-27M

\$365



33" Masonry Double Access Door
SSDD-33M

\$515



45" Masonry Double Access Door
SSDD-45M

\$635



20" Masonry Vented Liquid Propane
Tank or Trash Drawer
SSTD1-20M

\$700



33" Masonry 2-Drawer & Access
Door Combo
SSDC2-33M

\$1,045



12" Masonry Island Vent Panel
SSIV-12M

\$55



17" Masonry Double Drawer
SSDR2-17M

\$820



17" Masonry Vertical 2-Drawer &
Paper Towel Holder Combo
SSTDC-17M

\$1,045

*STAINLESS ACCESSORIES APPLY ACROSS ALL BRANDS

All prices shown are Delivered & Assembled. Cash & Carry prices are 10% off.



DRY STORAGE



36" 2-Drawer Dry Storage Pantry
& Enclosed Cabinet Combo
SSDP-36DC

\$1,615



36" 2-Drawer Dry Storage Pantry
& Access Door Combo
SSDP-36AC

\$1,480



*STAINLESS ACCESSORIES APPLY ACROSS ALL BRANDS





Take your outdoor living space to the next level with stunning, multi-sized natural stone monoliths and LED lighting available with or without a high-fidelity sound diffusion system. From romantic moments to big bashes, Essenze di Luce has you covered with a variety of natural stone lighting and rock speaker options that are maintenance-free and designed to withstand the most adverse weather conditions-- from ice to the desert sun. Perfect for gardens, poolscapes, and outdoor living use.



Menhir Di Luce

A series of natural stone outdoor lamps and garden lights with LED technology, available in four different styles—Soft, Sidelong, Cross, and Stonehenge. In daylight, they function as design elements but evoke emotional light in the evening.

- FEATURES:**
- Choose from single, double, or triple illuminated sections
 - Choose from horizontal or inclined patterns
 - Available in 2 standard textures
 - Minimalistic and natural design complements any achitectural style
 - Ice resistant
 - Stainless Steel



SOFT

\$1,290



SIDELONG

\$1,455



CROSS

\$1,665



STONEHENGE

\$2,140



Menhir Sound

This natural stone outdoor sound system integrating Hi-fi sound diffusion and LED lighting brings both sights and sounds to the yard. Fill your space with soft illumination and your favorite music—all effortlessly emanating from natural stone elements. Unparalleled resistance to splashes, spray, sand, and the most adverse weather conditions.

- FEATURES:**
- Aisi 316L stainless steel audio system
 - Easy connect; user-friendly; control music from your device
 - Plays/streams the most popular music services
 - Choose from 3 standard textures
 - Ice resistant
 - Wi-fi Audio Controller



SOUND

\$2,290



MINIMAL SOUND
(SPECIAL ORDER)

Call for Pricing



SOUND PRO
(SPECIAL ORDER)

Call for Pricing



Stake

Arrange an ambience with outdoor path lighting. Sleek pillars of natural stone offer architectural and design elements by day and transform into striking and luminous scenic features by evening. Perfect for illuminating footpaths, flower beds and outdoor living areas.

- FEATURES:**
- Natural stone floor lamp for outdoors
 - Choose single or double vertical LED (only 4mm thick)
 - Ice resistant
 - Multiple color and texture options
 - Fits modern, contemporary, and Mediterranean styles
 - Chemical Resistant
 - Stainless Steel



STAKE

Call for Pricing



DIMPLEX® HEATERS

BCDimplex

**DLW Series
Outdoor/Indoor Radiant Heater, White**
DLW3200W24



- Effective radiant heat that warms like the sun, heating people and objects with zero glare
- Silent, maintenance-free operation
- IP 55 rated, weather-proof construction allows year-round enjoyment
- Designed for permanent hardwired installations on a dedicated 240V circuit

\$1,550

**Indoor/Outdoor Electric
Infrared Heater, 240V 2000W**
DSH20W



- IP65 rating for indoor and outdoor applications
- 1, 2 and 3 hour delay timer
- 8 hour auto shutoff safety mechanism
- 3 second maximum heat up time

\$607

**DLW Series Outdoor/Indoor Radiant
Heater, Black**
DLW2400B24



- Effective radiant heat that warms like the sun, heating people and objects with zero glare
- Silent, maintenance-free operation
- IP 55 rated, weather-proof construction allows year-round enjoyment
- Designed for permanent hardwired installations on a dedicated 240V circuit

\$1,150

**DIRP Outdoor/Indoor Infrared Heater,
Plug-in Model, 120V, 1500W**
DIRP15A10GR



- Nextrema® Schott glass ensures even heat distribution and minimizes light emissions
- Corrosion-resistant anodized aluminum and 304 stainless steel makes this product suitable for all climates
- Three temperature settings - 600W (low), 1050W (med), 1500W (high) for maximum comfort
- Produces full heat in as little as 6 second maximum

\$410

**Outdoor Portable Infrared Propane
Heater, 31,500 BTU**
DGR32PLP



- Powerful, stylish and portable heat for outdoor areas
- Heat on demand - when and where you need it
- Durable stainless steel construction
- Advanced safety features including world-class wind protection up to 9.9 Mph/16 km/hr.

*Must order both DGR32PLP-HEAD & DGR32PLP-STAND

\$945

Outdoor/Indoor Electric Infrared Heater
DIRP15A10GR



- Nextrema® Schott glass ensures even heat distribution and minimizes light emissions
- Non-porous surface and attractive design
- Instant Heat: Ruby halogen bulb provides full power in under 8 seconds
- Waterproof: IP65 rated for outdoor or indoor use
- Corrosion-resistant anodized aluminum casing provides long life and suitable for all climates

\$590

**Outdoor Wall-mounted
Natural Gas Infrared Heater, 31,500 BTU**
DGR32WNG



- Powerful, stylish and space-saving heat for outdoor areas
- Heat on demand - when and where you need it
- Durable stainless steel construction
- Advanced safety features including world-class wind protection up to 9.9 Mph/`6 Kph

\$1,200

**Indoor/Outdoor Electric Infrared Heater,
Permanent Location Floor Stand**
DSHSTAND



- Ability to tilt heater(s) for optimal heat exposure
- Corrosion-resistant anodized aluminum and 304 stainless steel makes this product suitable for all climates
- All hardware included
- Quick and easy installation

\$330



PERGOLAS

- Constructed of vinyl
- Easy maintenance
- Customizable
- Lifetime warranty
- Two stock sizes: 13'x16' or 15'x15'

13' x 6' – \$6,534

15' x 15' – \$3,432

CUSTOM SIZES AVAILABLE

All prices shown are Delivered & Assembled. Cash & Carry prices are 10% off.



ALL-SEASON OUTDOOR KITCHENS



4343 Durham Road, Kintnersville PA 18930

Office: 484.810.1366

Sales@All-Season-OK.com

All-Season-OK.com