

SAUK\_SOLAR\_POC

# Solar Thermography Pro Report



Generated for  
LIDAR Drone Services

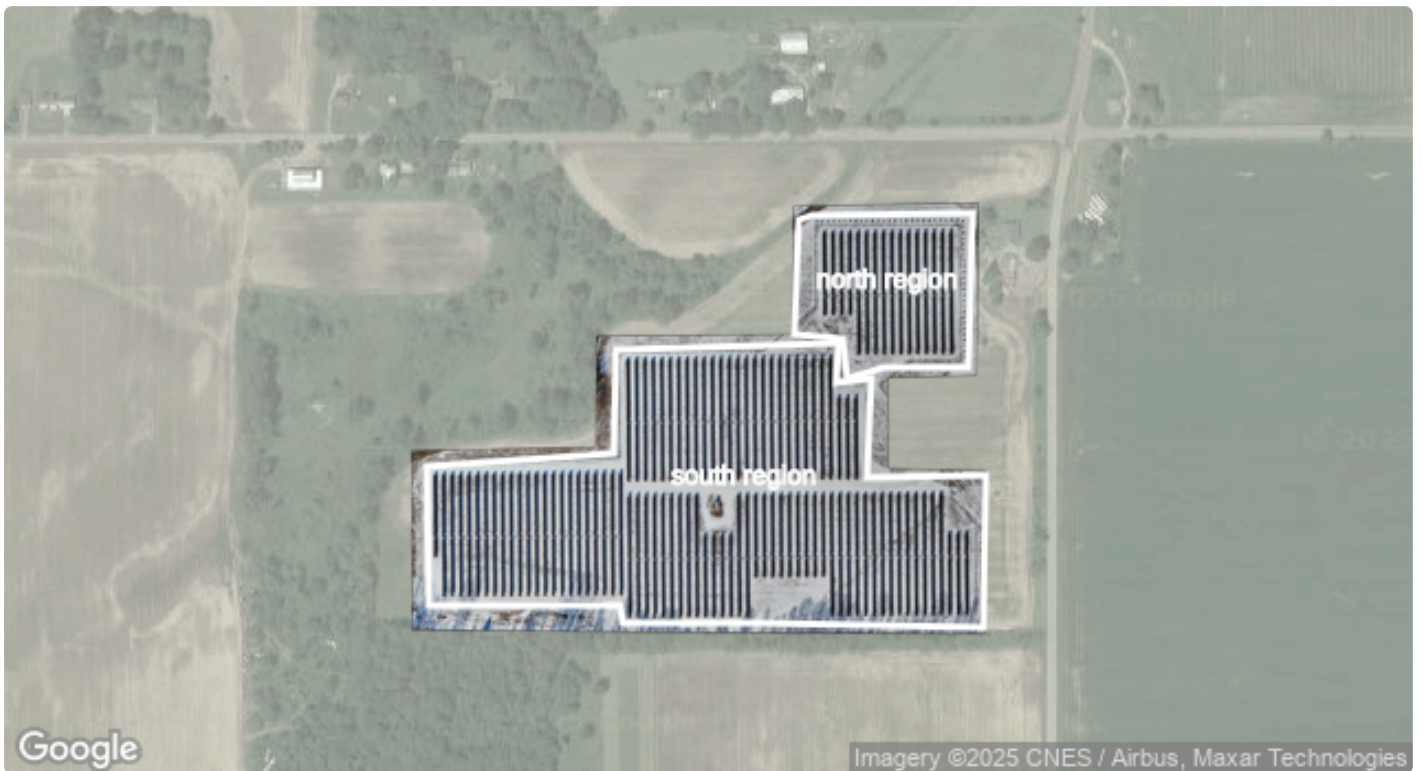
Generated on  
Jun 06, 2025

## Table of Contents

Site Information .....	1
Operation Information .....	2
Map Overview .....	3
Reports .....	4
Loss Estimation Per Region .....	4
Anomalies Per Region .....	5
Causes Per Region .....	6
Severity Per Region .....	7
(Multi) Hotspot Delta Per Region .....	8
Punch List .....	9

## Site Information

Name	sauk_solar_POC	Type	Solar
Area	12.98 ha	Peak Power	5 MWp
Address		Number of Panels	<Unknown>
Panel inclination	<Unknown>	Panel orientation	<Unknown>
Commissioning Date	<Unknown>	Panel Maximum Power (Pmax)	540 W
Panel model	<Unknown>	Inverter model	<Unknown>



## Operation Information

Data Product	Solar Thermography Pro	Horizontal Coordinate System	WGS 84
Area	12.98 ha		

### Flights Information

Visual Flight(s) Timeframe	Jan 27, 2025 13:40 to Jan 27, 2025 14:03 (GMT-5)	Thermal Flight(s) Timeframe	Jan 27, 2025 13:40 to Jan 27, 2025 14:03 (GMT-5)
Main Visual Drone	DJI Matrice 300 RTK	Main Visual Camera	DJI H30T RGB - Zoom lens (recommended)
Main Thermal Drone	DJI Matrice 300 RTK	Main Thermal Camera	DJI H30T Thermal

# Map Overview



# Reports

## Loss Estimation Per Region

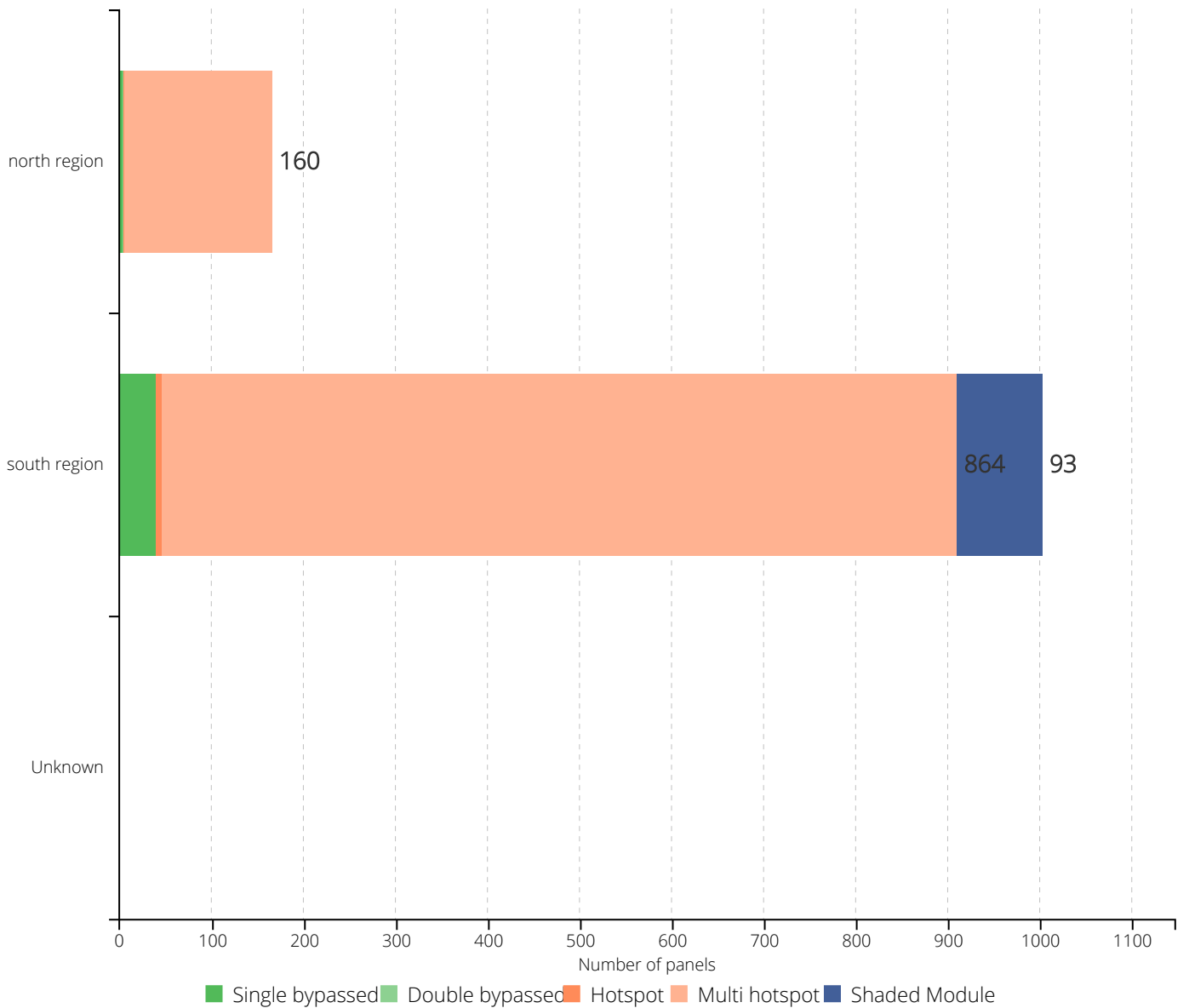
The table below provides a holistic view on the performance of this solar site and the losses that it is currently experiencing. This can be used to check the overall production loss per region and gain useful insights into different panel brands or region locations on production.

Zone	# Anomalies	# Affected Modules	MWh/year	Ton CO <sub>2</sub> /year	USD/year
north region	166	166	10.65	4.4	851.96
south region	1,003	1,003	61.9	25.56	4,951.7
<b>Total</b>	<b>1,169</b>	<b>1,169</b>	<b>72.55</b>	<b>29.96</b>	<b>5,803.66</b>



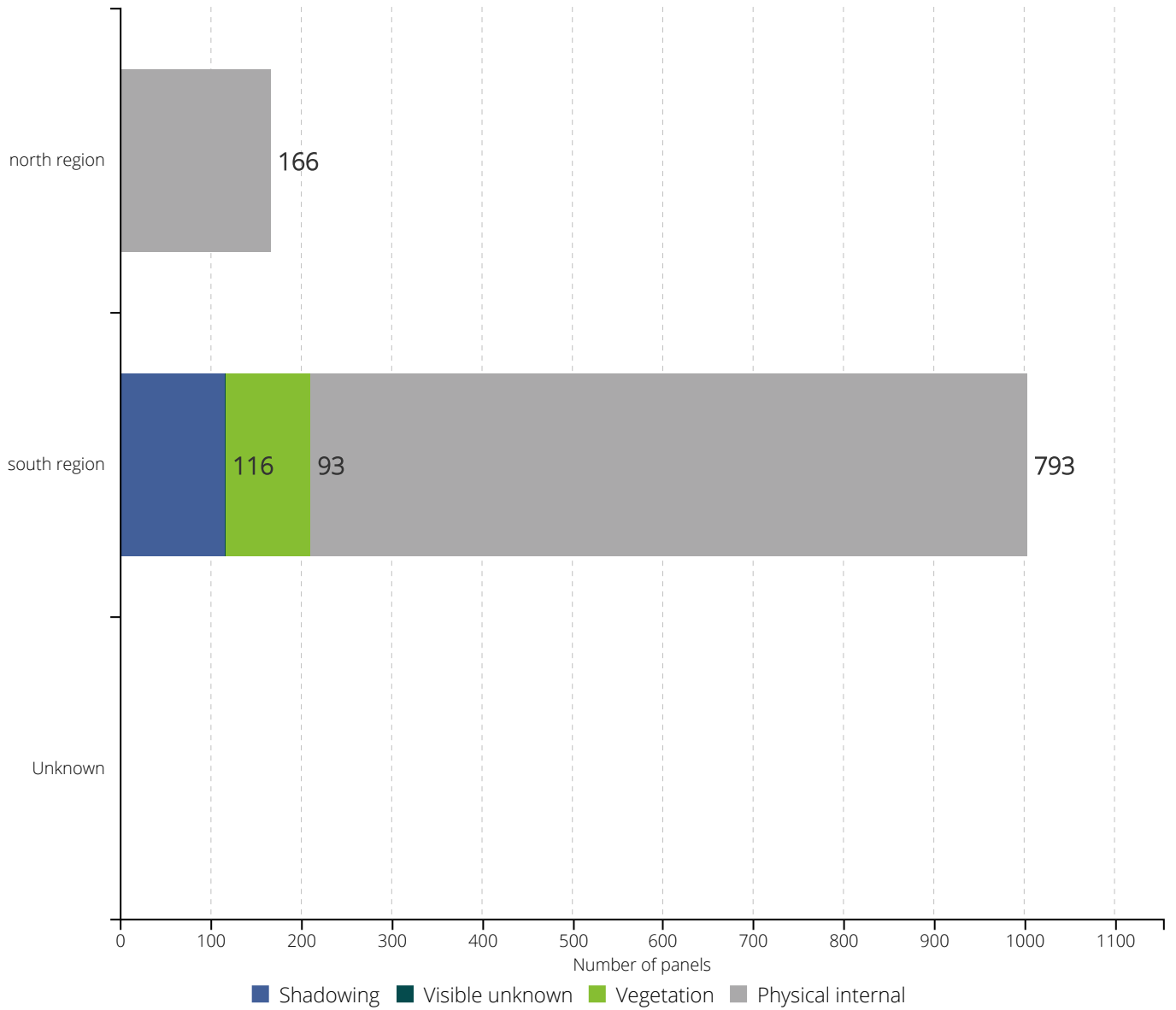
## Anomalies Per Region

The graph below highlights the total number of modules affected by each anomaly type in each region. This allows you to better understand what the most significant problems are on your site. You can also compare different regions to check if certain issues relate to specific areas of your site for example panel type in one region and occurrence of PID.



## Causes Per Region

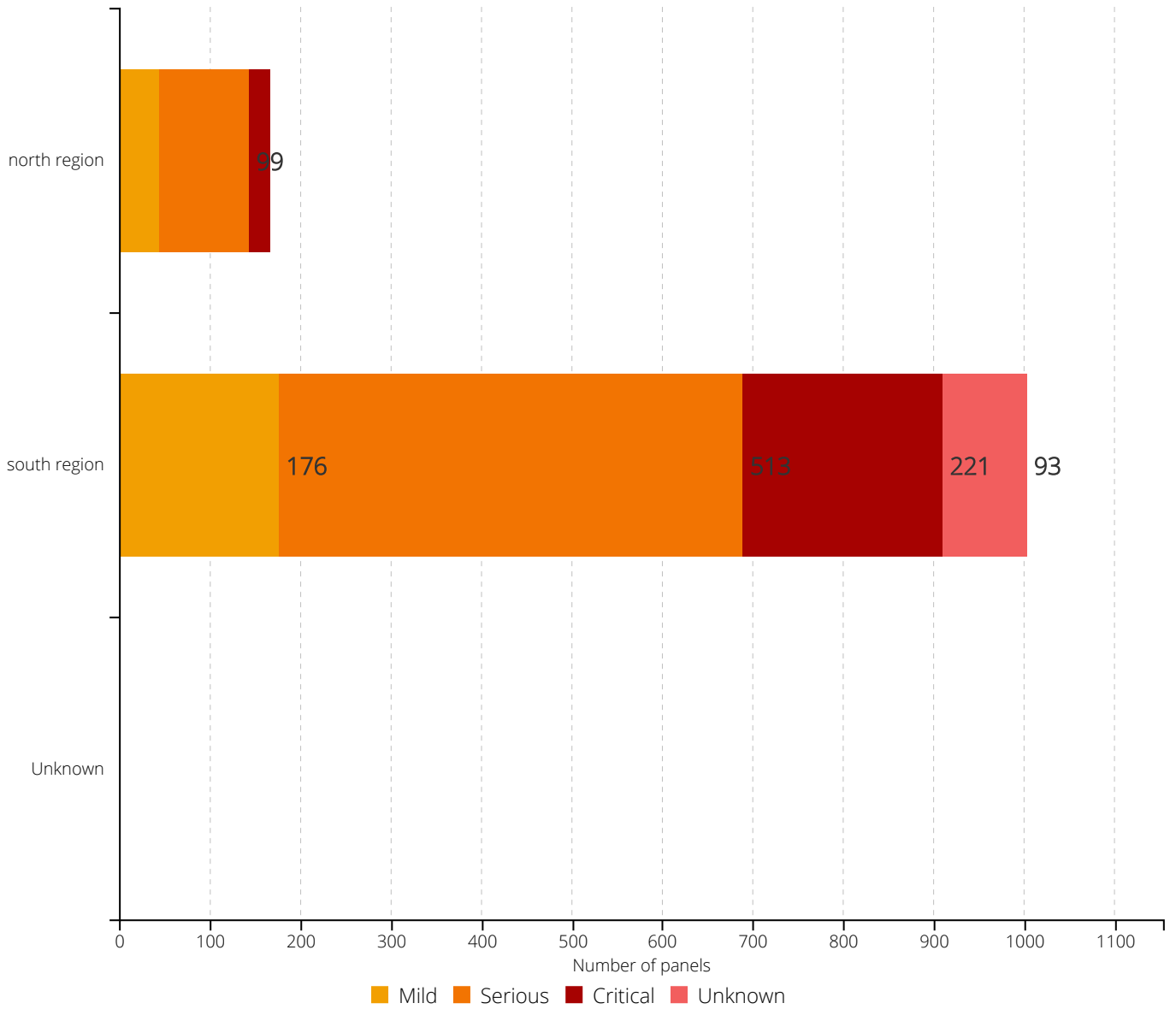
The graph below shows you the different causes of the modules that are affected in each region. This can be interesting as it allows you to filter out certain issues or identify what type of intervention is needed. It can be used to help target corrective actions and prioritise easy to fix situations.





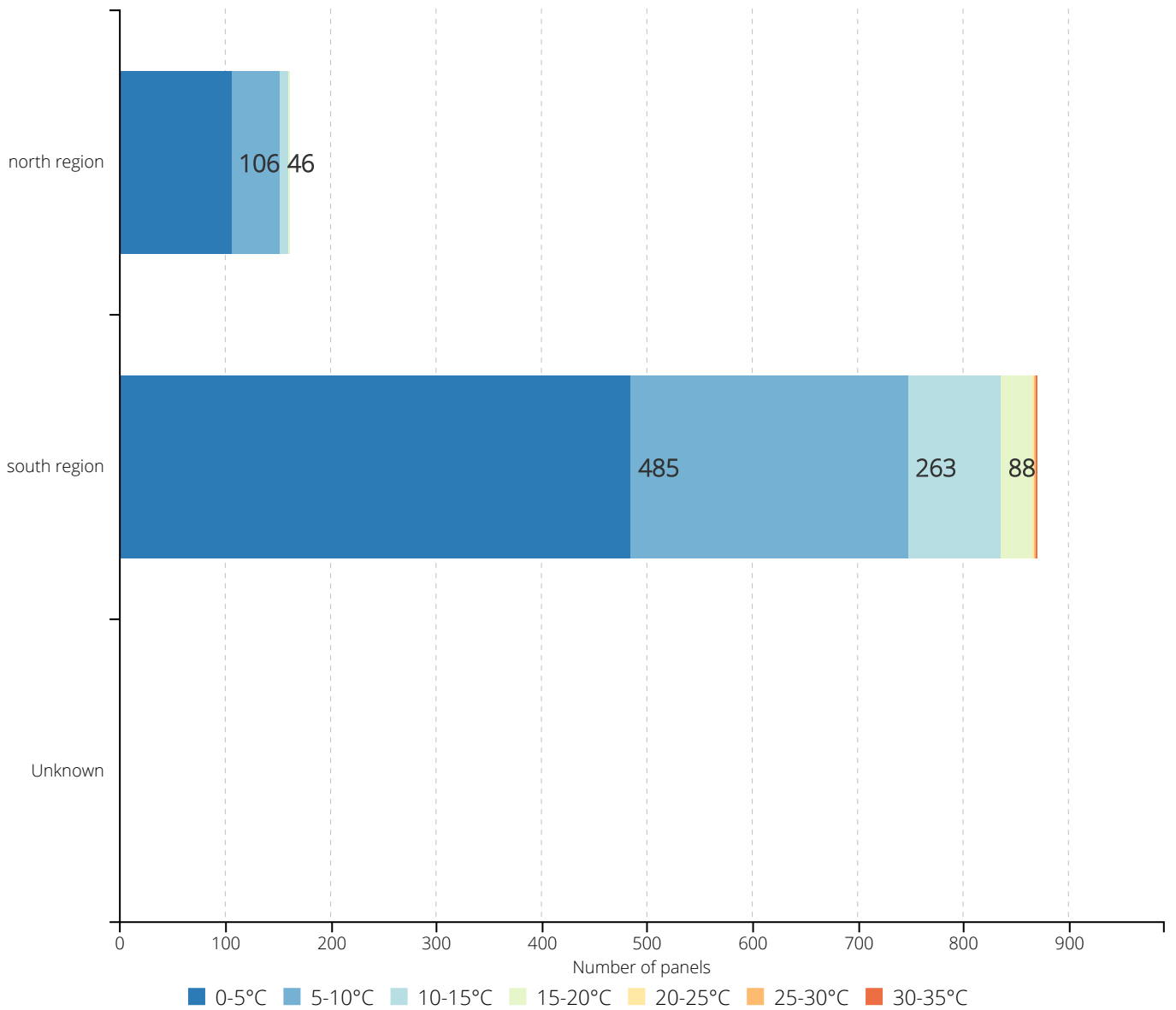
## Severity Per Region

This graph categorises each module into different levels of severities which are based on the anomaly type as well as the delta temperature of the anomaly. This should be used to quickly identify and prioritise regions with the most severe issues that could result in fire hazards or major production losses.



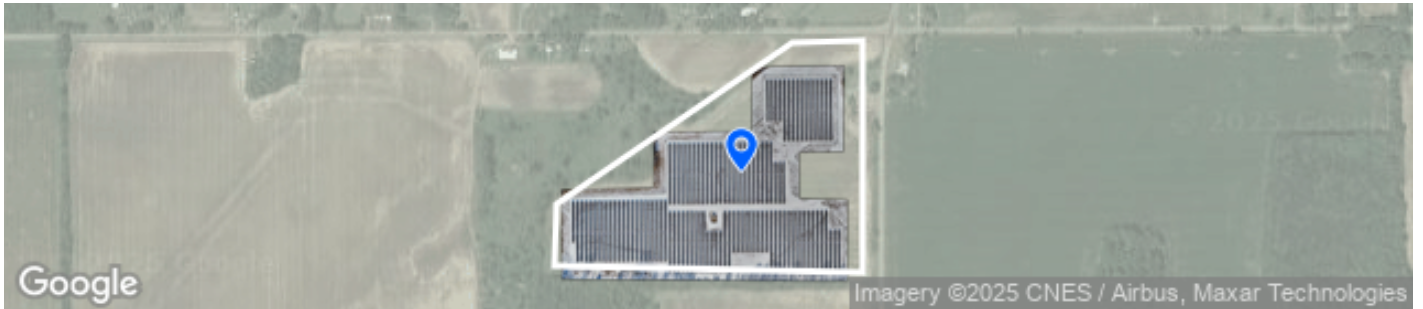
## (Multi) Hotspot Delta Per Region

This graph will help you understand how critical your hotspot/multi hotspot issues are. It should be used to identify areas with fire hazards and causing permanent damage to panels.



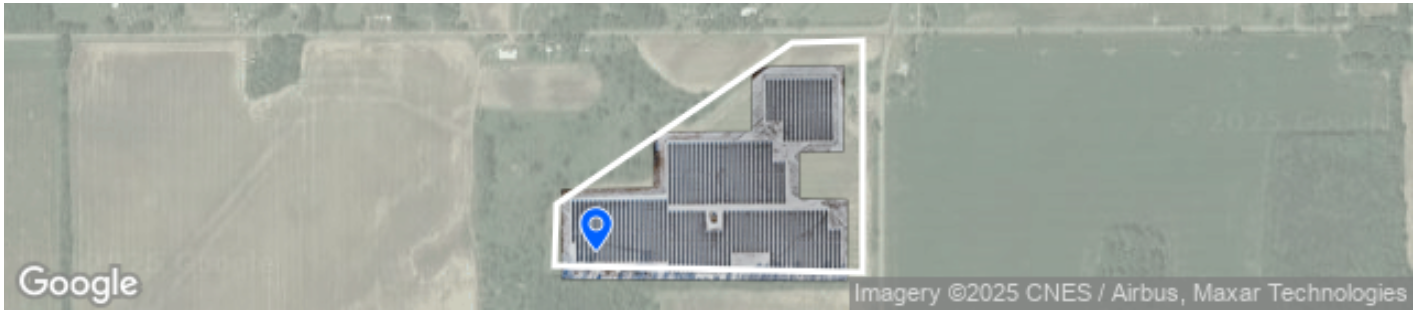
# Punch List

## #1 - Thermal Anomalies #1134 Ticket



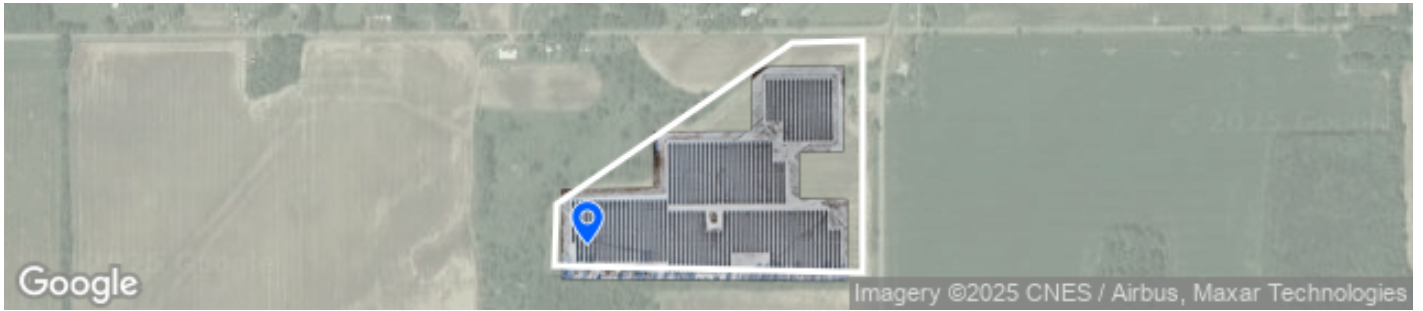
ID	1	Status	To Do
Created By	Ryan Pierce	Anomaly Type	Single bypassed
Anomaly Cause	Physical internal	Remedial Action	Quick Fix
Longitude	-85.0830706 °	Latitude	42.0707762 °
Zone	south region		

## #2 - Thermal Anomalies #1165 Ticket



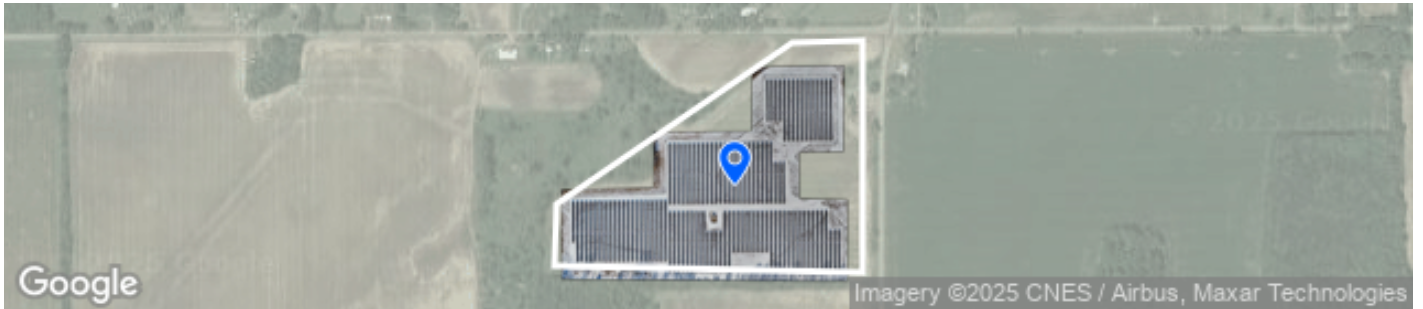
ID	2	Status	To Do
Created By	Ryan Pierce	Assignee	Marcus Adams
Anomaly Type	Single bypassed	Anomaly Cause	Physical internal
Remedial Action	Quick Fix	Longitude	-85.0859322 °
Latitude	42.0696347 °	Zone	south region

### #3 - Thermal Anomalies #1163 Ticket



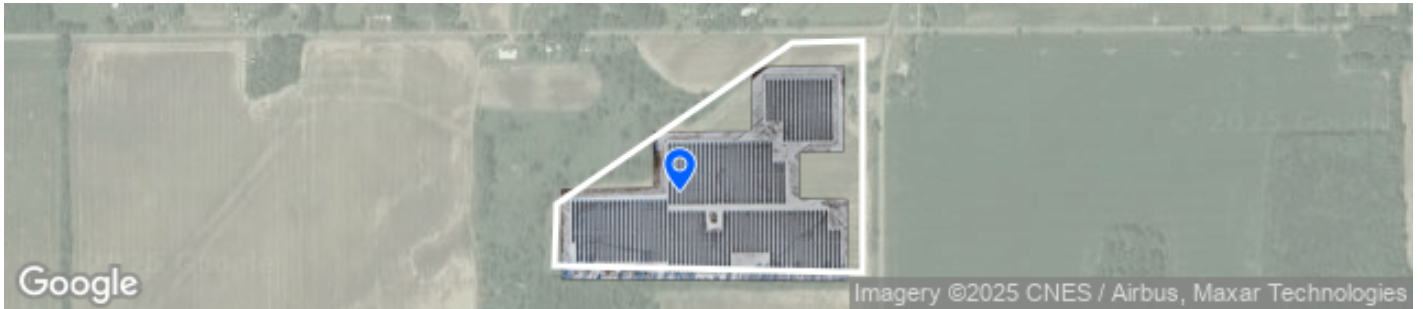
<b>ID</b>	3	<b>Status</b>	To Do
<b>Created By</b>	Ryan Pierce	<b>Assignee</b>	Marcus Adams
<b>Anomaly Type</b>	Single bypassed	<b>Anomaly Cause</b>	Physical internal
<b>Remedial Action</b>	Quick Fix	<b>Longitude</b>	-85.0860978 °
<b>Latitude</b>	42.0697186 °	<b>Zone</b>	south region

## #4 - Thermal Anomalies #1142 Ticket



ID	4	Status	To Do
Created By	Ryan Pierce	Anomaly Type	Single bypassed
Anomaly Cause	Physical internal	Remedial Action	Quick Fix
Longitude	-85.083233 °	Latitude	42.0705908 °
Zone	south region		

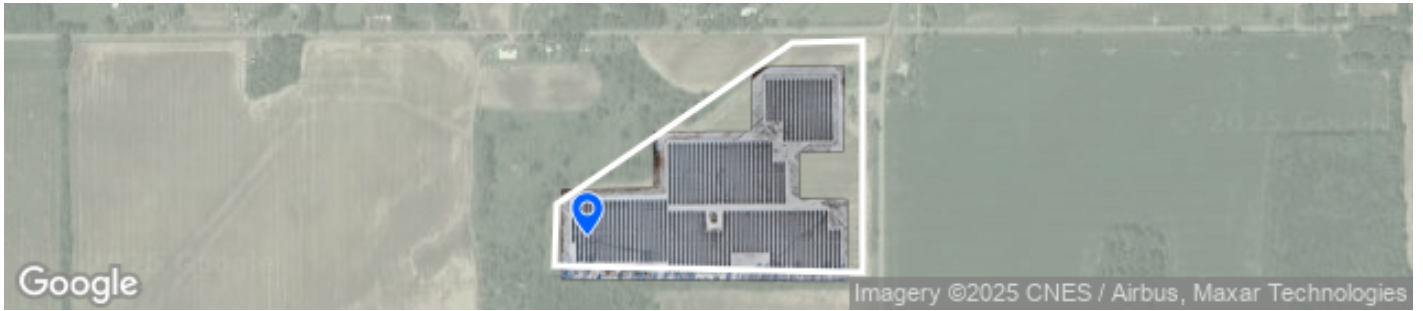
## #5 - Thermal Anomalies #1122 Ticket



ID	5	Status	To Do
Created By	Ryan Pierce	Anomaly Type	Single bypassed
Anomaly Cause	Physical internal	Remedial Action	Quick Fix
Longitude	-85.0842993 °	Latitude	42.0704884 °
Zone	south region		

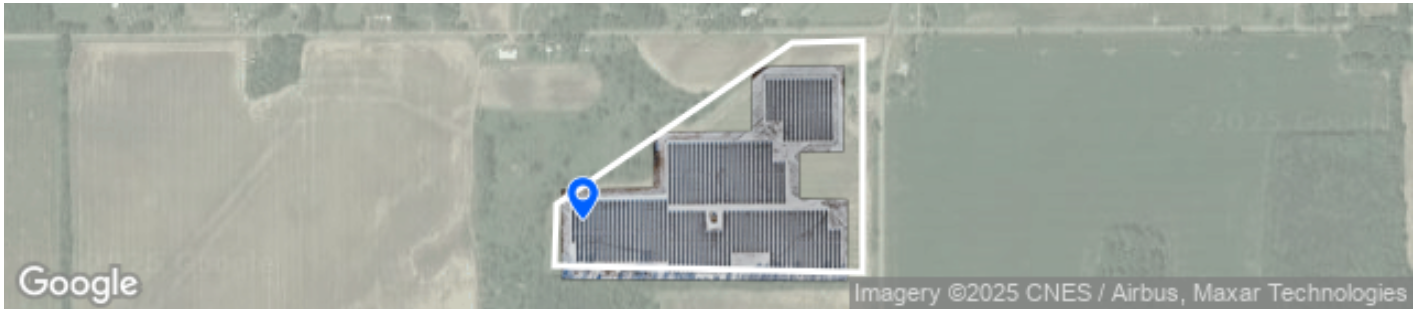


## #6 - Thermal Anomalies #1161 Ticket



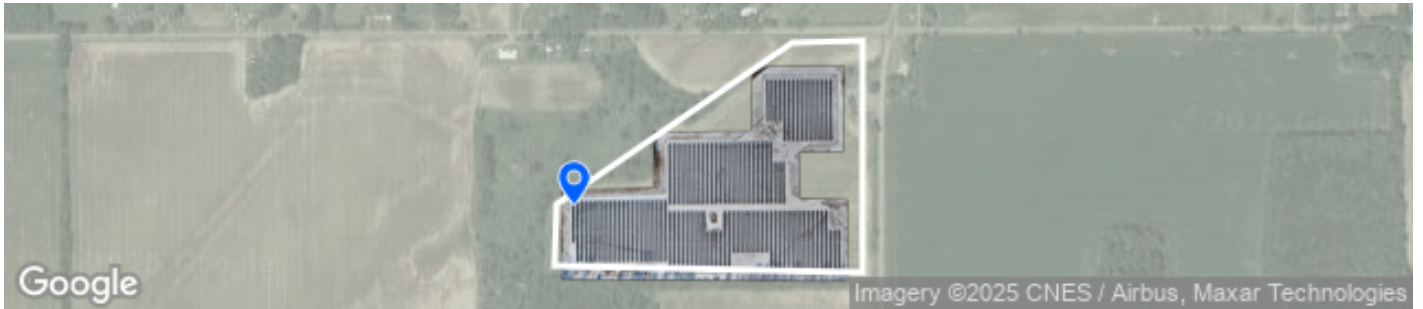
<b>ID</b>	6	<b>Status</b>	To Do
<b>Created By</b>	Ryan Pierce	<b>Assignee</b>	Marcus Adams
<b>Anomaly Type</b>	Single bypassed	<b>Anomaly Cause</b>	Physical internal
<b>Remedial Action</b>	Quick Fix	<b>Longitude</b>	-85.0860992 °
<b>Latitude</b>	42.0698553 °	<b>Zone</b>	south region

## #7 - Thermal Anomalies #1162 Ticket



ID	7	Status	To Do
Created By	Ryan Pierce	Assignee	Marcus Adams
Anomaly Type	Single bypassed	Anomaly Cause	Physical internal
Remedial Action	Quick Fix	Longitude	-85.0861837 °
Latitude	42.0700618 °	Zone	south region

## #8 - Thermal Anomalies #2 Ticket



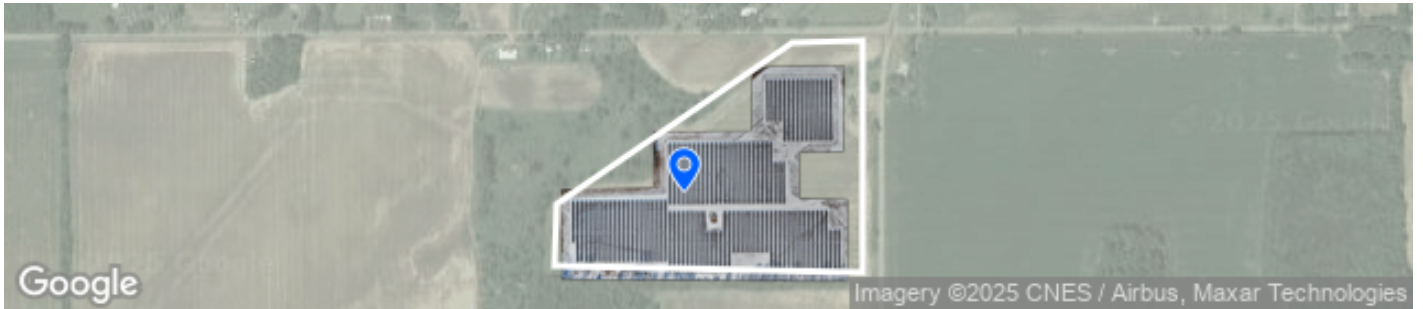
ID	8	Status	In Progress
Created By	Ryan Pierce	Assignee	Marcus Adams
Due Date	2025-05-22T22:00:00.000Z	Anomaly Type	Single bypassed
Anomaly Cause	Physical internal	Remedial Action	Quick Fix
Longitude	-85.0863504 °	Latitude	42.070306 °
Zone	south region		

## #9 - Thermal Anomalies #1124 Ticket



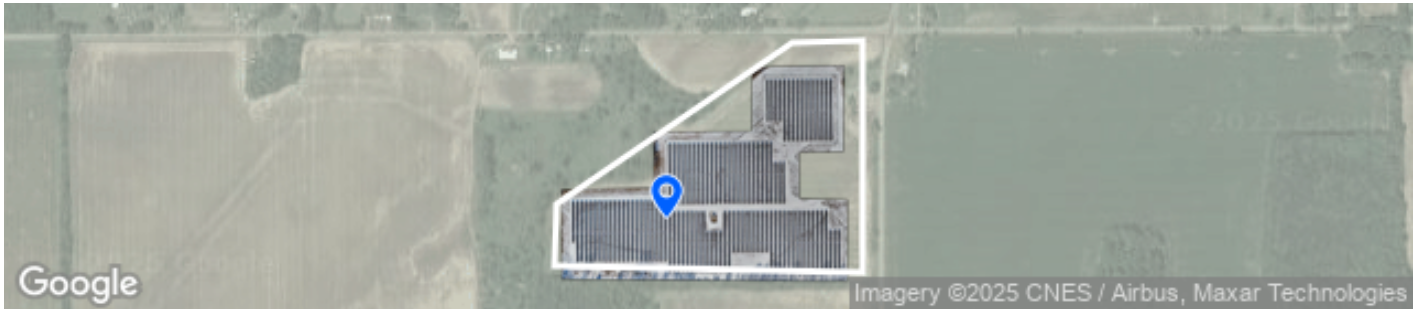
ID	9	Status	To Do
Created By	Ryan Pierce	Anomaly Type	Single bypassed
Anomaly Cause	Physical internal	Remedial Action	Quick Fix
Longitude	-85.0820635 °	Latitude	42.0720358 °
Zone	north region		

## #10 - Thermal Anomalies #1123 Ticket



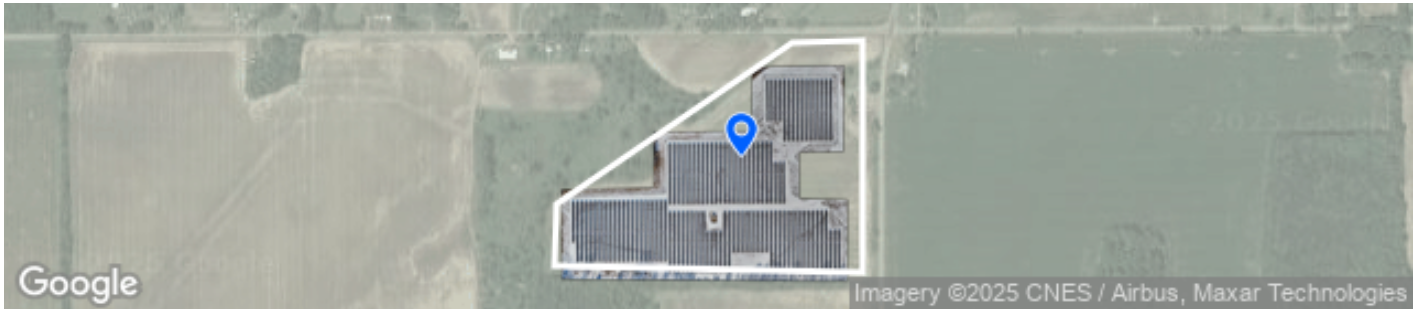
ID	10	Status	To Do
Created By	Ryan Pierce	Anomaly Type	Single bypassed
Anomaly Cause	Physical internal	Remedial Action	Quick Fix
Longitude	-85.0842172 °	Latitude	42.0704887 °
Zone	south region		

## #11 - Thermal Anomalies #1152 Ticket



ID	11	Status	To Do
Created By	Ryan Pierce	Assignee	Marcus Adams
Anomaly Type	Single bypassed	Anomaly Cause	Physical internal
Remedial Action	Quick Fix	Longitude	-85.0845424 °
Latitude	42.070113 °	Zone	south region

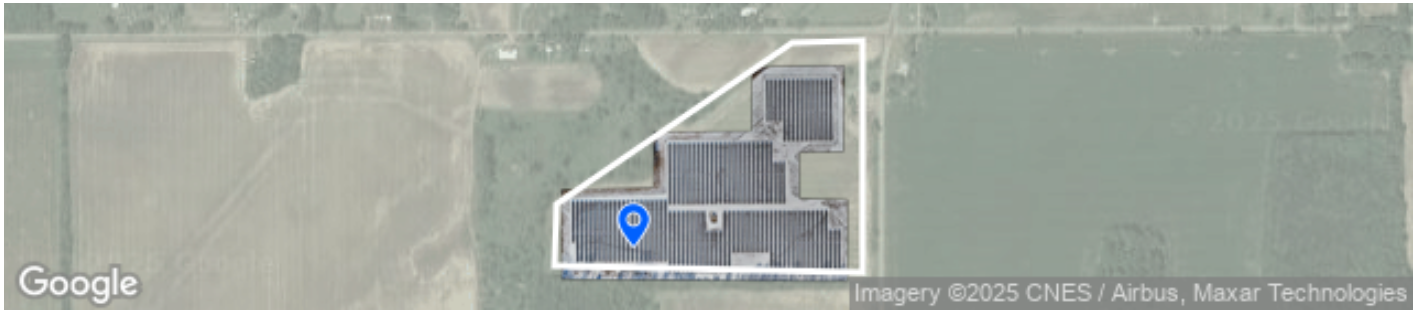
## #12 - Thermal Anomalies #1132 Ticket



ID	12	Status	To Do
Created By	Ryan Pierce	Anomaly Type	Single bypassed
Anomaly Cause	Physical internal	Remedial Action	Quick Fix
Longitude	-85.0830739 °	Latitude	42.070988 °
Zone	south region		

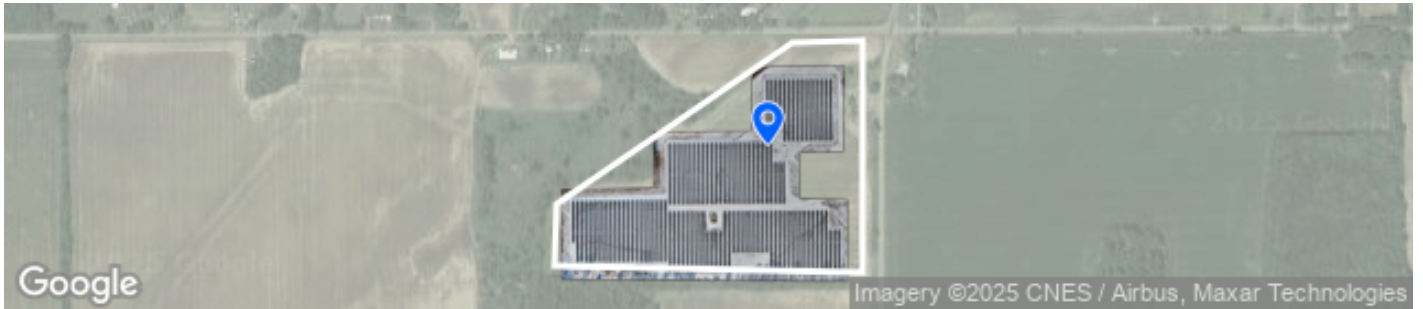


## #13 - Thermal Anomalies #1156 Ticket



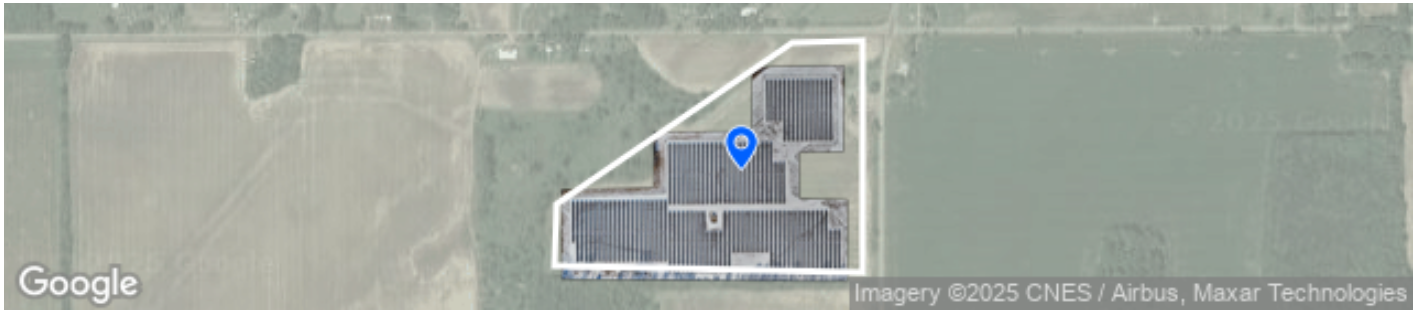
ID	13	Status	To Do
Created By	Ryan Pierce	Assignee	Marcus Adams
Anomaly Type	Single bypassed	Anomaly Cause	Physical internal
Remedial Action	Quick Fix	Longitude	-85.0851944 °
Latitude	42.0697015 °	Zone	south region

## #14 - Thermal Anomalies #1130 Ticket



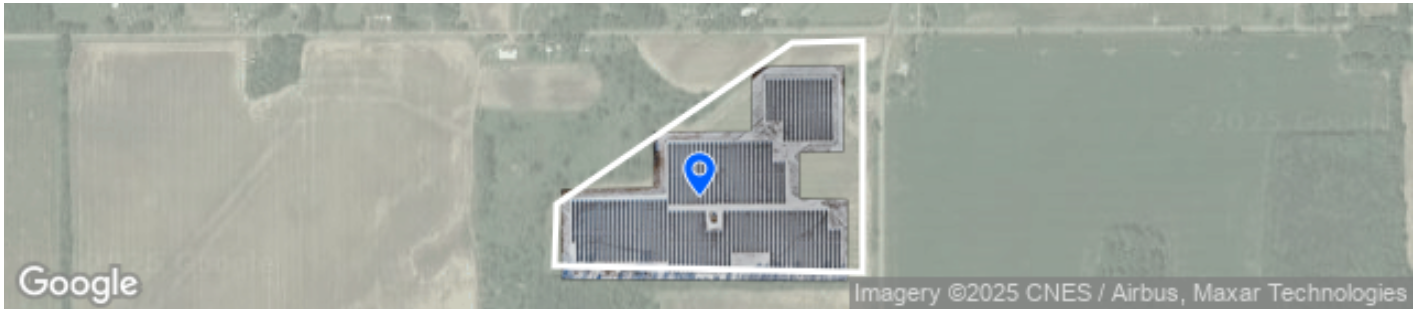
ID	14	Status	To Do
Created By	Ryan Pierce	Anomaly Type	Single bypassed
Anomaly Cause	Physical internal	Remedial Action	Quick Fix
Longitude	-85.0825831 °	Latitude	42.0711616 °
Zone	south region		

## #15 - Thermal Anomalies #1135 Ticket



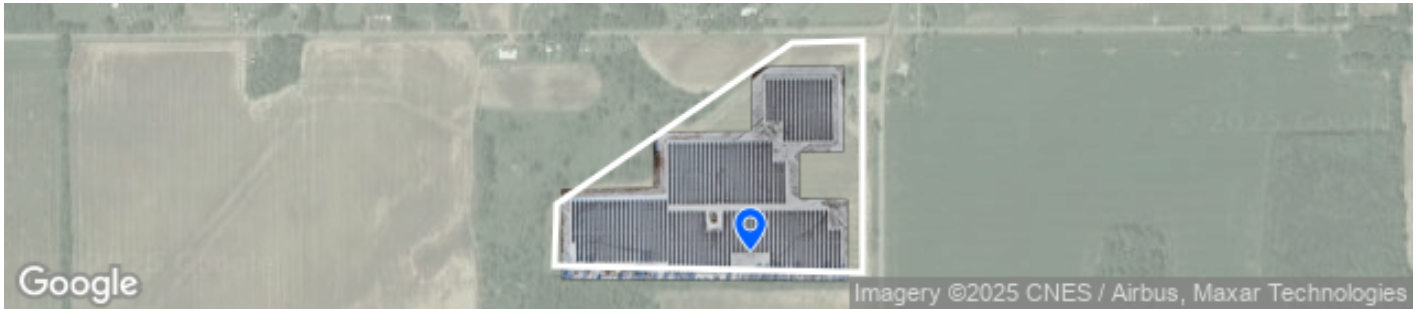
ID	15	Status	To Do
Created By	Ryan Pierce	Anomaly Type	Single bypassed
Anomaly Cause	Physical internal	Remedial Action	Quick Fix
Longitude	-85.0830708 °	Latitude	42.0708088 °
Zone	south region		

## #16 - Thermal Anomalies #1138 Ticket



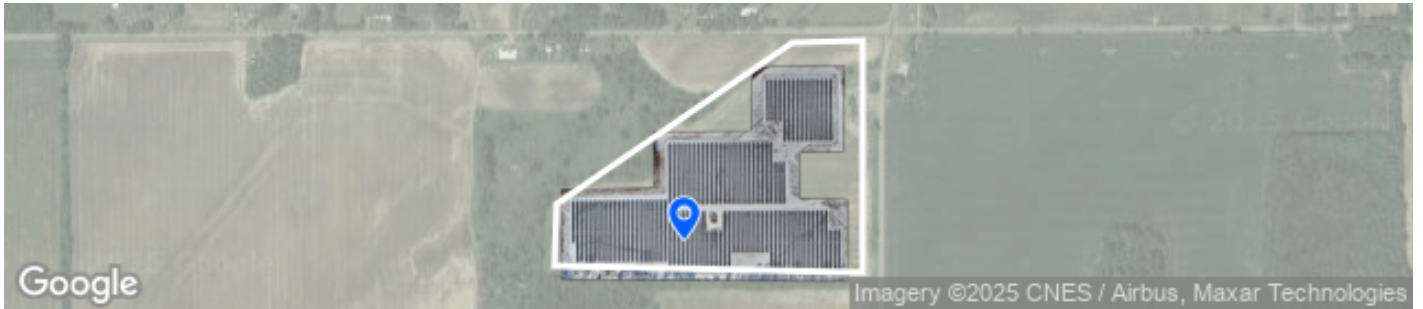
ID	16	Status	To Do
Created By	Ryan Pierce	Anomaly Type	Single bypassed
Anomaly Cause	Physical internal	Remedial Action	Quick Fix
Longitude	-85.0838879 °	Latitude	42.070437 °
Zone	south region		

## #17 - Thermal Anomalies #1148 Ticket



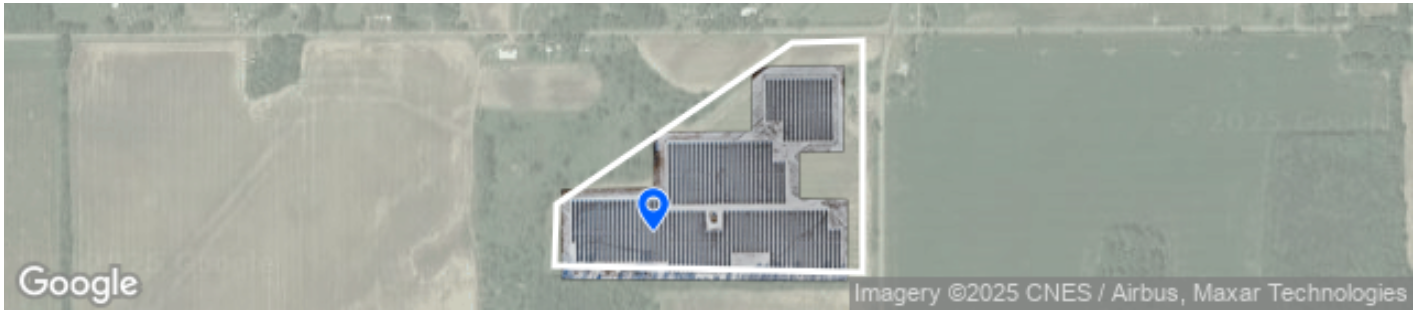
ID	17	Status	To Do
Created By	Ryan Pierce	Anomaly Type	Single bypassed
Anomaly Cause	Physical internal	Remedial Action	Quick Fix
Longitude	-85.0828934 °	Latitude	42.0696357 °
Zone	south region		

## #18 - Thermal Anomalies #1151 Ticket



ID	18	Status	To Do
Created By	Ryan Pierce	Assignee	Marcus Adams
Anomaly Type	Single bypassed	Anomaly Cause	Physical internal
Remedial Action	Quick Fix	Longitude	-85.0842093 °
Latitude	42.0697705 °	Zone	south region

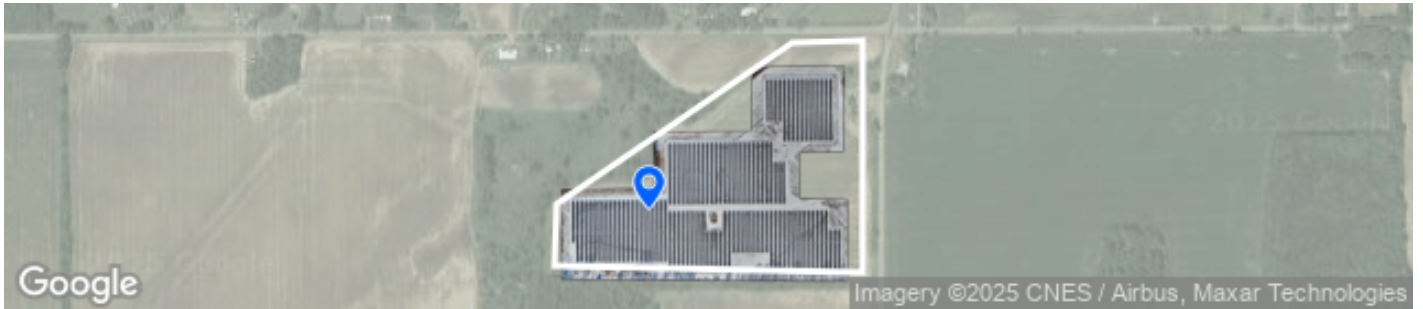
## #19 - Thermal Anomalies #1153 Ticket



ID	19	Status	To Do
Created By	Ryan Pierce	Assignee	Marcus Adams
Anomaly Type	Single bypassed	Anomaly Cause	Physical internal
Remedial Action	Quick Fix	Longitude	-85.084786 °
Latitude	42.0699002 °	Zone	south region

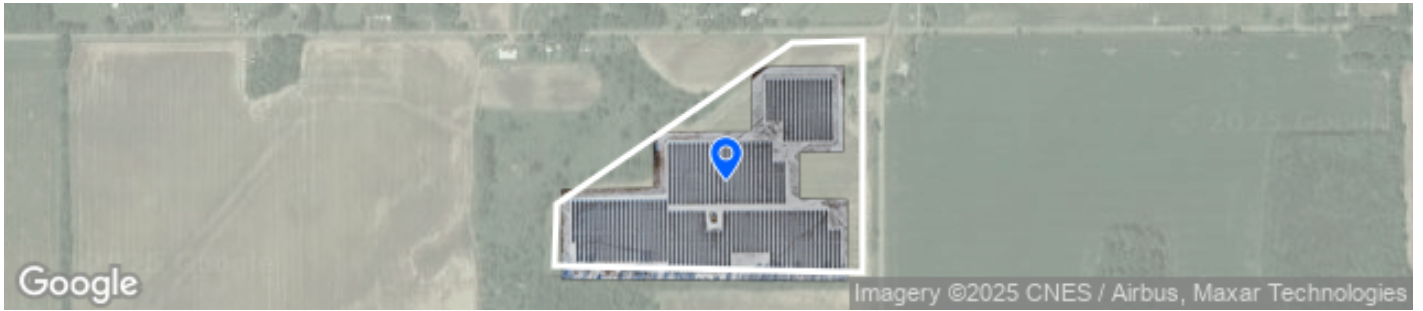


## #20 - Thermal Anomalies #1155 Ticket



ID	20	Status	To Do
Created By	Ryan Pierce	Assignee	Marcus Adams
Anomaly Type	Single bypassed	Anomaly Cause	Physical internal
Remedial Action	Quick Fix	Longitude	-85.0848725 °
Latitude	42.0702279 °	Zone	south region

## #21 - Thermal Anomalies #1140 Ticket



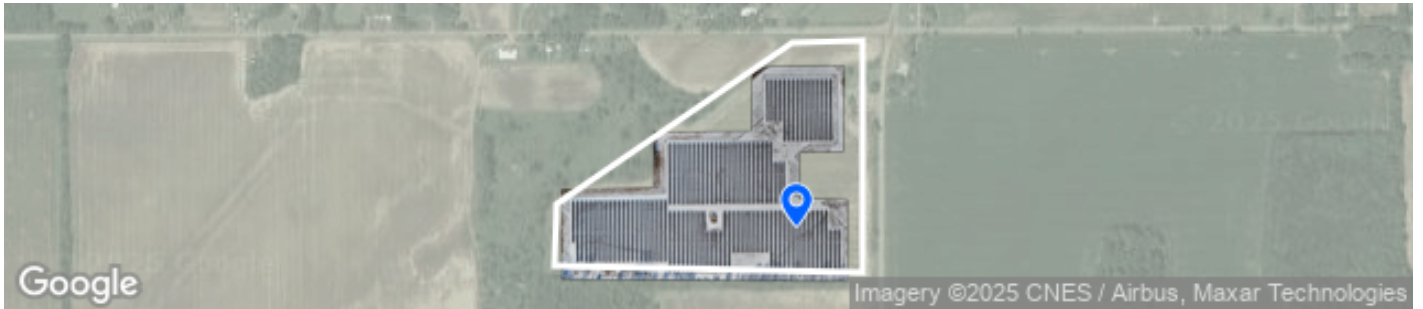
ID	21	Status	To Do
Created By	Ryan Pierce	Anomaly Type	Single bypassed
Anomaly Cause	Physical internal	Remedial Action	Quick Fix
Longitude	-85.0833978 °	Latitude	42.0706525 °
Zone	south region		

## #22 - Thermal Anomalies #1149 Ticket



ID	22	Status	To Do
Created By	Ryan Pierce	Assignee	Marcus Adams
Anomaly Type	Single bypassed	Anomaly Cause	Physical internal
Remedial Action	Quick Fix	Longitude	-85.0844593 °
Latitude	42.0700873 °	Zone	south region

## #23 - Thermal Anomalies #1147 Ticket



ID	23	Status	To Do
Created By	Ryan Pierce	Anomaly Type	Single bypassed
Anomaly Cause	Physical internal	Remedial Action	Quick Fix
Longitude	-85.0819925 °	Latitude	42.0699859 °
Zone	south region		

## #24 - Thermal Anomalies #1159 Ticket



ID	24	Status	To Do
Created By	Ryan Pierce	Assignee	Marcus Adams
Anomaly Type	Single bypassed	Anomaly Cause	Physical internal
Remedial Action	Quick Fix	Longitude	-85.0856052 °
Latitude	42.0697734 °	Zone	south region

## #25 - Thermal Anomalies #1125 Ticket



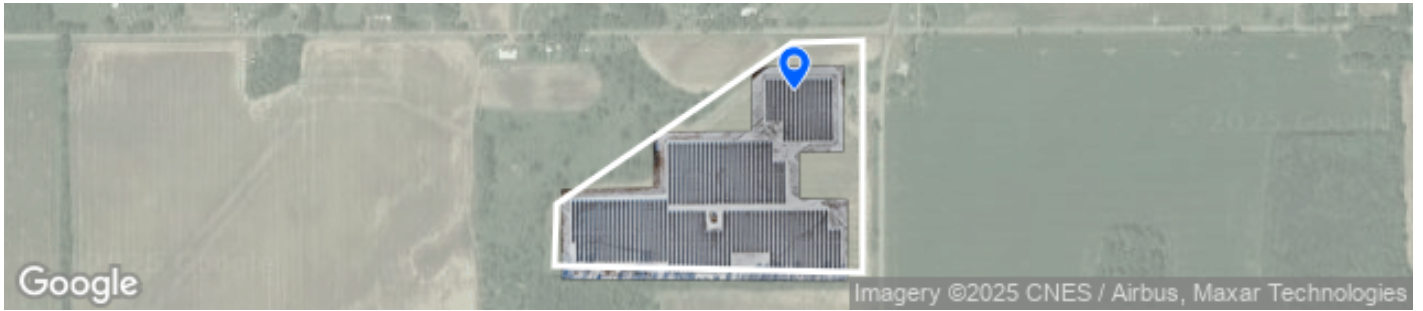
ID	25	Status	To Do
Created By	Ryan Pierce	Anomaly Type	Single bypassed
Anomaly Cause	Physical internal	Remedial Action	Quick Fix
Longitude	-85.0820635 °	Latitude	42.0720153 °
Zone	north region		

## #26 - Thermal Anomalies #1126 Ticket



ID	26	Status	To Do
Created By	Ryan Pierce	Anomaly Type	Double bypassed
Anomaly Cause	Physical internal	Remedial Action	Quick Fix
Longitude	-85.0819815 °	Latitude	42.072037 °
Zone	north region		

## #27 - Thermal Anomalies #1127 Ticket



ID	27	Status	To Do
Created By	Ryan Pierce	Anomaly Type	Single bypassed
Anomaly Cause	Physical internal	Remedial Action	Quick Fix
Longitude	-85.0820629 °	Latitude	42.0719617 °
Zone	north region		

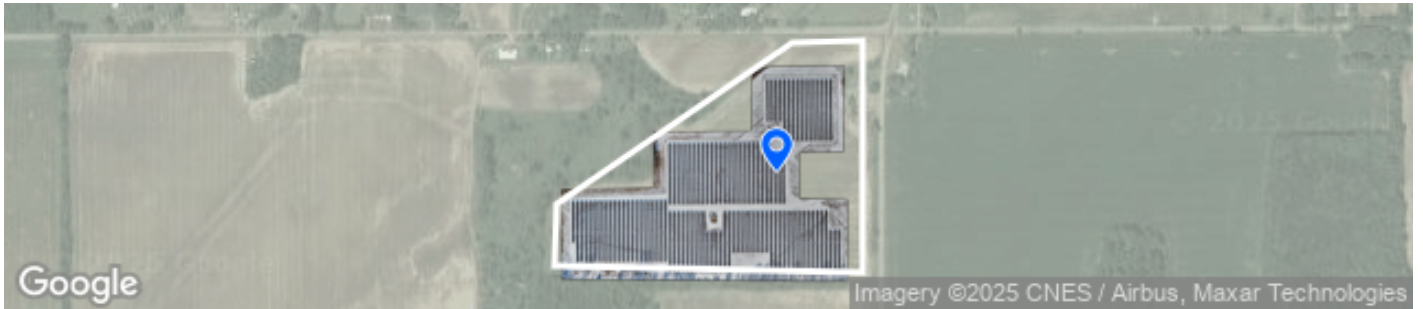


## #28 - Thermal Anomalies #1128 Ticket



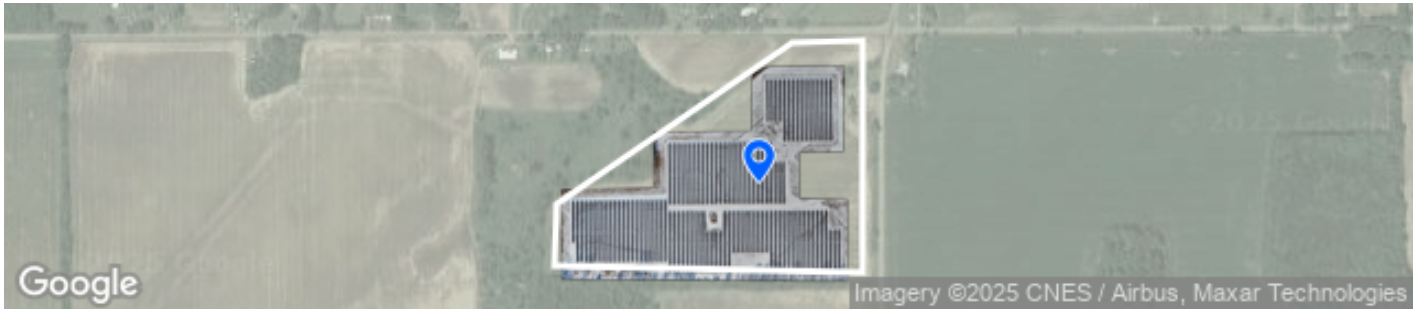
ID	28	Status	To Do
Created By	Ryan Pierce	Anomaly Type	Single bypassed
Anomaly Cause	Physical internal	Remedial Action	Quick Fix
Longitude	-85.0819804 °	Latitude	42.0719521 °
Zone	north region		

## #29 - Thermal Anomalies #1129 Ticket



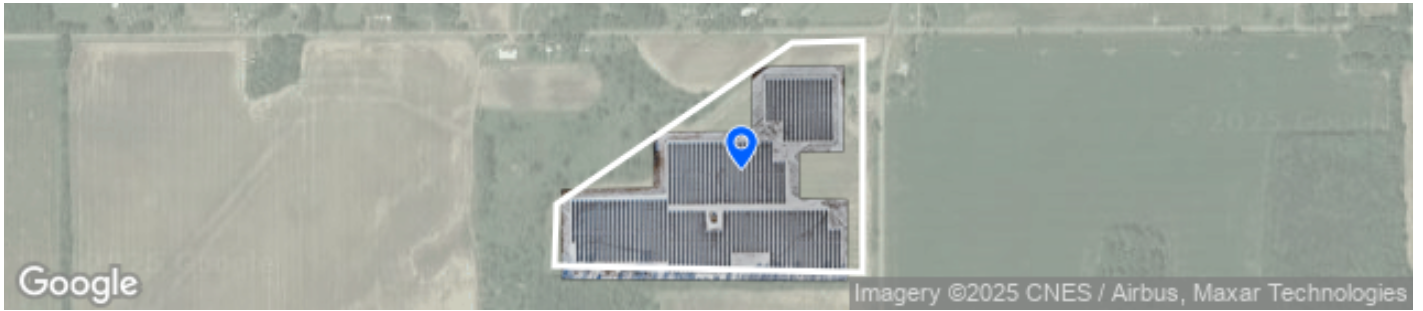
ID	29	Status	To Do
Created By	Ryan Pierce	Anomaly Type	Single bypassed
Anomaly Cause	Physical internal	Remedial Action	Quick Fix
Longitude	-85.0824131 °	Latitude	42.0707587 °
Zone	south region		

## #30 - Thermal Anomalies #1131 Ticket



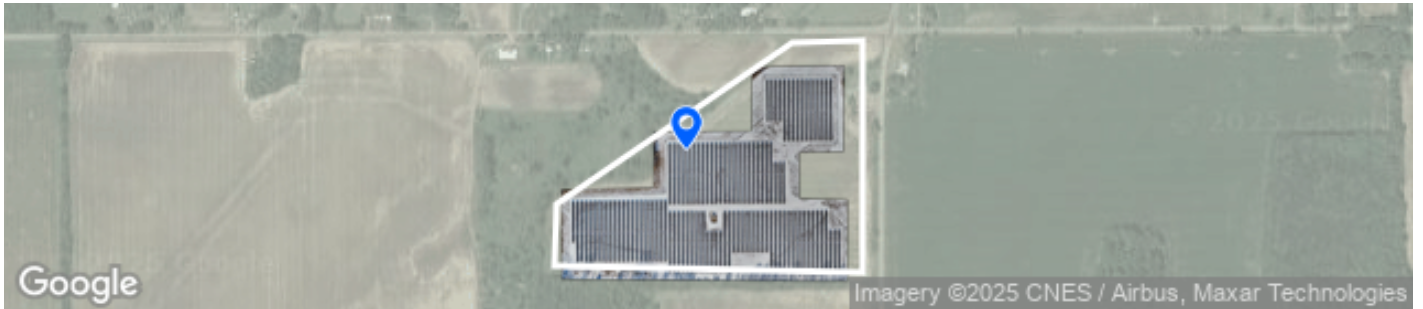
ID	30	Status	To Do
Created By	Ryan Pierce	Anomaly Type	Single bypassed
Anomaly Cause	Physical internal	Remedial Action	Quick Fix
Longitude	-85.08274 °	Latitude	42.070625 °
Zone	south region		

## #31 - Thermal Anomalies #1133 Ticket



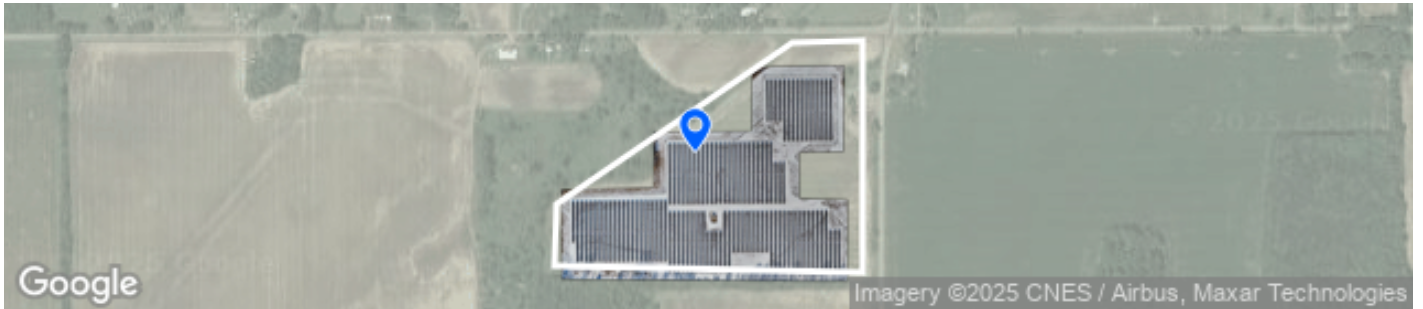
ID	31	Status	To Do
Created By	Ryan Pierce	Anomaly Type	Single bypassed
Anomaly Cause	Physical internal	Remedial Action	Quick Fix
Longitude	-85.083071 °	Latitude	42.0707985 °
Zone	south region		

## #32 - Thermal Anomalies #1136 Ticket



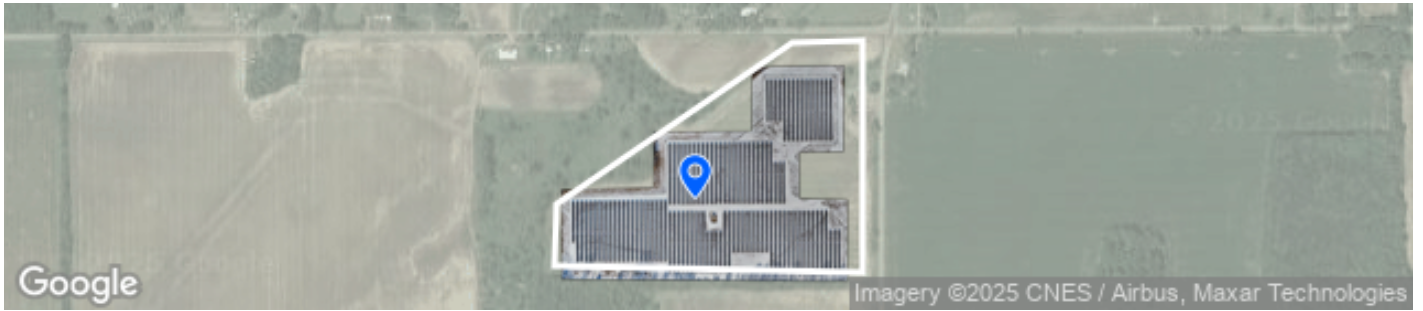
ID	32	Status	To Do
Created By	Ryan Pierce	Anomaly Type	Single bypassed
Anomaly Cause	Physical internal	Remedial Action	Quick Fix
Longitude	-85.084143 °	Latitude	42.0710984 °
Zone	south region		

## #33 - Thermal Anomalies #1137 Ticket



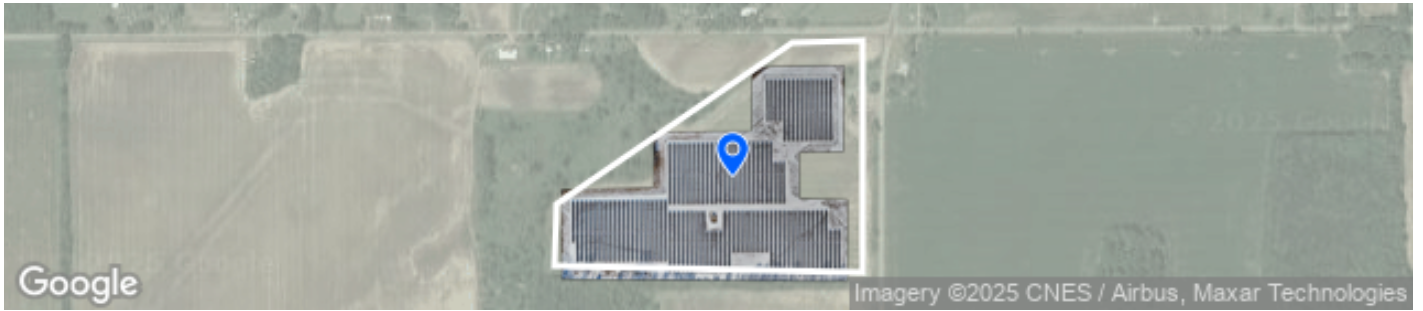
ID	33	Status	To Do
Created By	Ryan Pierce	Anomaly Type	Single bypassed
Anomaly Cause	Physical internal	Remedial Action	Quick Fix
Longitude	-85.0839786 °	Latitude	42.0710668 °
Zone	south region		

## #34 - Thermal Anomalies #1139 Ticket



ID	34	Status	To Do
Created By	Ryan Pierce	Anomaly Type	Single bypassed
Anomaly Cause	Physical internal	Remedial Action	Quick Fix
Longitude	-85.0839701 °	Latitude	42.0704055 °
Zone	south region		

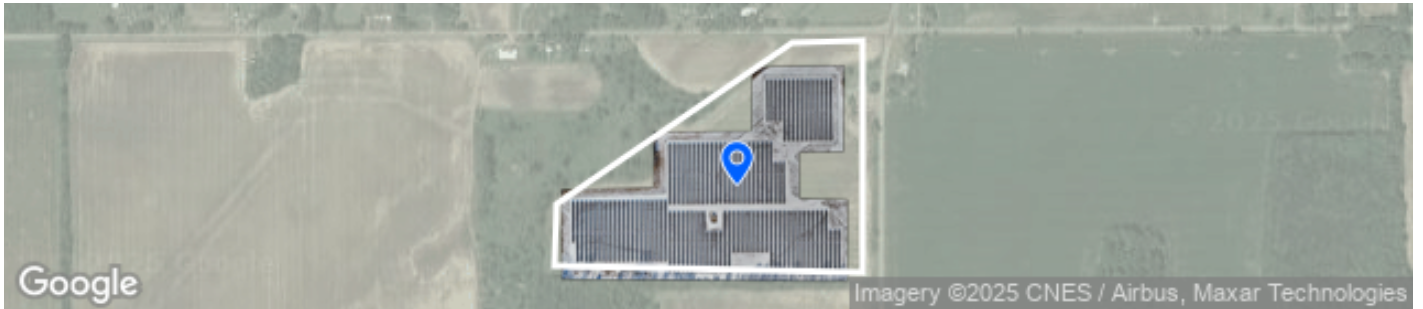
## #35 - Thermal Anomalies #1141 Ticket



ID	35	Status	To Do
Created By	Ryan Pierce	Anomaly Type	Single bypassed
Anomaly Cause	Physical internal	Remedial Action	Quick Fix
Longitude	-85.083234 °	Latitude	42.0706954 °
Zone	south region		

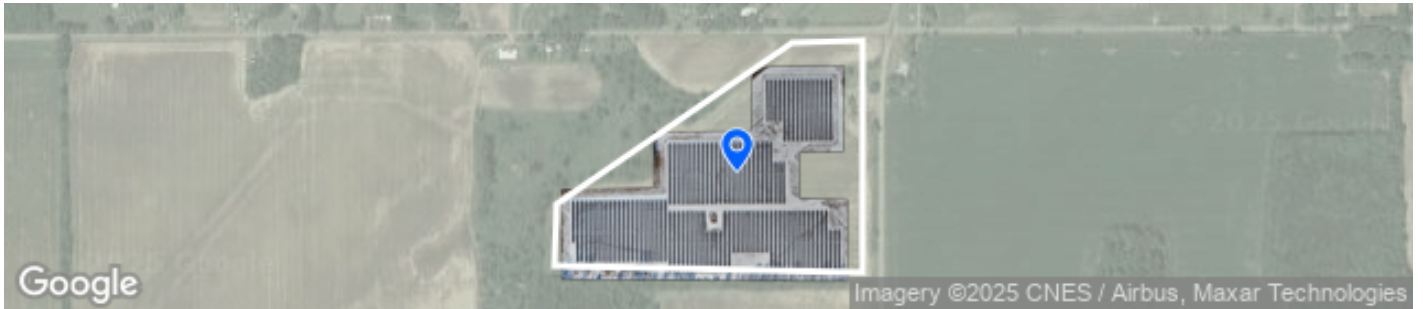


## #36 - Thermal Anomalies #1143 Ticket



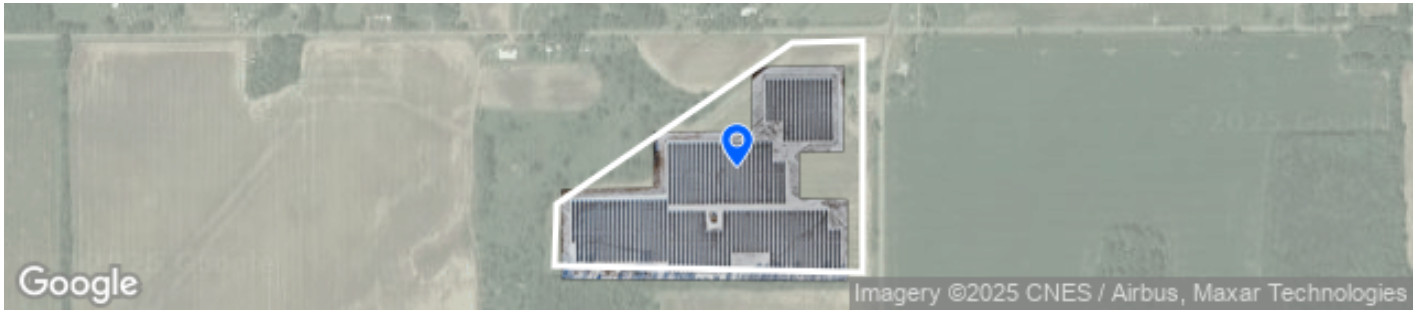
ID	36	Status	To Do
Created By	Ryan Pierce	Anomaly Type	Single bypassed
Anomaly Cause	Physical internal	Remedial Action	Quick Fix
Longitude	-85.0831505 °	Latitude	42.0705806 °
Zone	south region		

## #37 - Thermal Anomalies #1144 Ticket



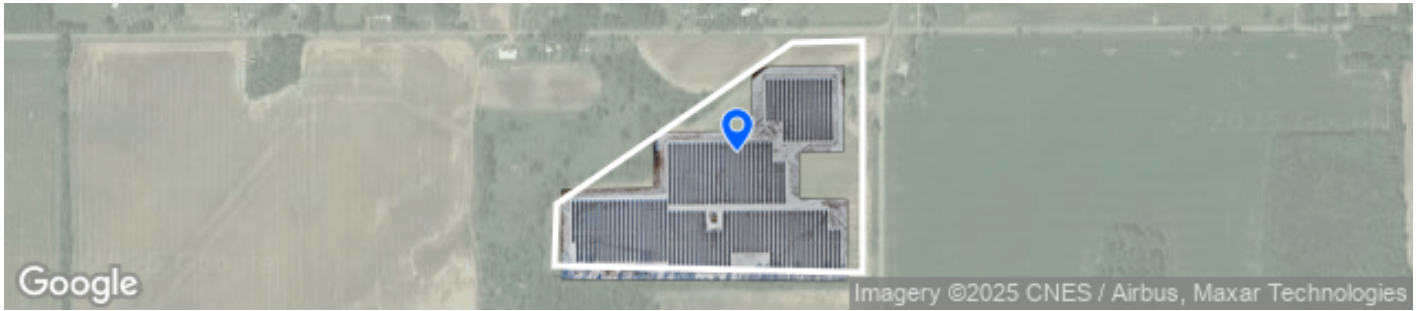
ID	37	Status	To Do
Created By	Ryan Pierce	Anomaly Type	Single bypassed
Anomaly Cause	Physical internal	Remedial Action	Quick Fix
Longitude	-85.083153 °	Latitude	42.0707645 °
Zone	south region		

## #38 - Thermal Anomalies #1145 Ticket



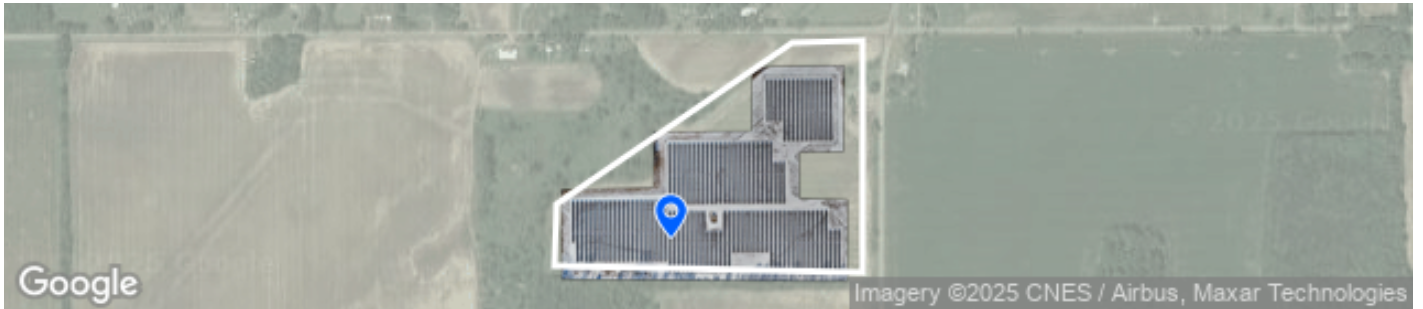
ID	38	Status	To Do
Created By	Ryan Pierce	Anomaly Type	Single bypassed
Anomaly Cause	Physical internal	Remedial Action	Quick Fix
Longitude	-85.0831543 °	Latitude	42.0708386 °
Zone	south region		

## #39 - Thermal Anomalies #1146 Ticket



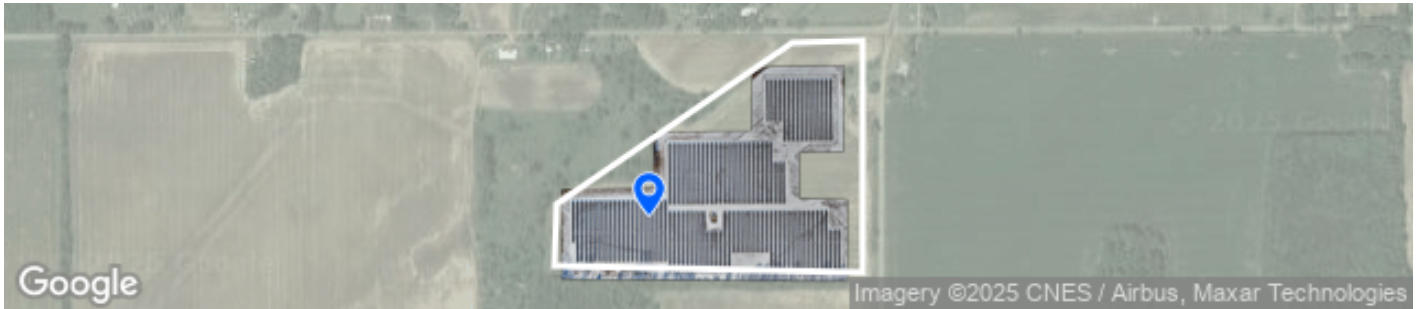
ID	39	Status	To Do
Created By	Ryan Pierce	Anomaly Type	Single bypassed
Anomaly Cause	Physical internal	Remedial Action	Quick Fix
Longitude	-85.0831564 °	Latitude	42.071051 °
Zone	south region		

## #40 - Thermal Anomalies #1150 Ticket



ID	40	Status	To Do
Created By	Ryan Pierce	Assignee	Marcus Adams
Anomaly Type	Single bypassed	Anomaly Cause	Physical internal
Remedial Action	Quick Fix	Longitude	-85.0844558 °
Latitude	42.0698221 °	Zone	south region

## #41 - Thermal Anomalies #1154 Ticket



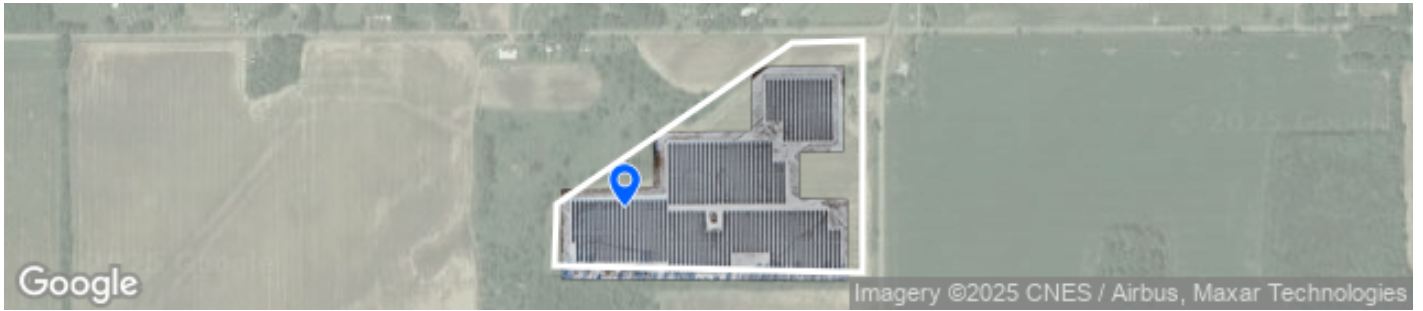
ID	41	Status	To Do
Created By	Ryan Pierce	Assignee	Marcus Adams
Anomaly Type	Single bypassed	Anomaly Cause	Physical internal
Remedial Action	Quick Fix	Longitude	-85.0848712 °
Latitude	42.0701326 °	Zone	south region

## #42 - Thermal Anomalies #1157 Ticket



ID	42	Status	To Do
Created By	Ryan Pierce	Assignee	Marcus Adams
Anomaly Type	Single bypassed	Anomaly Cause	Physical internal
Remedial Action	Quick Fix	Longitude	-85.0853652 °
Latitude	42.0702357 °	Zone	south region

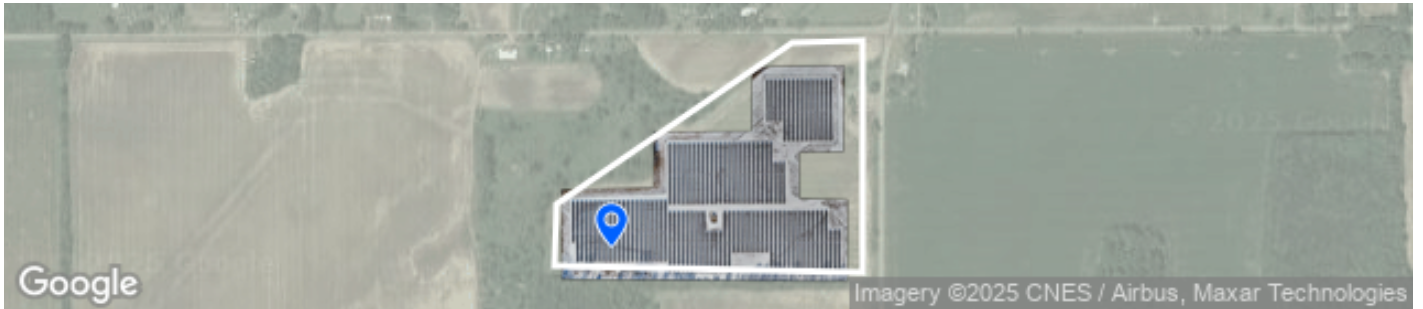
## #43 - Thermal Anomalies #1158 Ticket



ID	43	Status	To Do
Created By	Ryan Pierce	Assignee	Marcus Adams
Anomaly Type	Single bypassed	Anomaly Cause	Physical internal
Remedial Action	Quick Fix	Longitude	-85.0853657 °
Latitude	42.0702476 °	Zone	south region

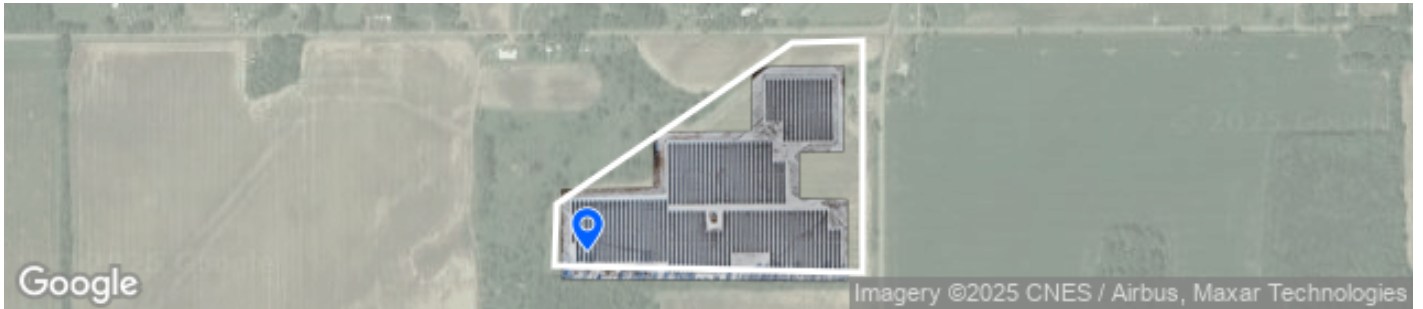


## #44 - Thermal Anomalies #1160 Ticket



ID	44	Status	To Do
Created By	Ryan Pierce	Assignee	Marcus Adams
Anomaly Type	Single bypassed	Anomaly Cause	Physical internal
Remedial Action	Quick Fix	Longitude	-85.0856045 °
Latitude	42.0696996 °	Zone	south region

## #45 - Thermal Anomalies #1164 Ticket



ID	45	Status	To Do
Created By	Ryan Pierce	Assignee	Marcus Adams
Anomaly Type	Single bypassed	Anomaly Cause	Physical internal
Remedial Action	Quick Fix	Longitude	-85.0860971 °
Latitude	42.0696335 °	Zone	south region