

Sailing Instructions

Regattas in The Abacos (RiTA) June 22 to June 29, 2025

The overall objective of RiTA is to have Fun on the Sea of Abaco. We welcome experienced and first-time racers with the same gusto.

This document provides for the sailing instructions to govern the “Regattas in The Abacos” to be held from June 22 to June 29, 2025 only.



- 1. Rules.** The event will be governed by:
 - 1.1. The rules as defined in the Racing Rules of Sailing 2025-2028 (RRS)
 - 1.2. The Race Committee may set rules specific to this event which may supersede parts of the RRS.
- 2. Management:** All races and related activities shall be under the management of the RiTA Race Committee (R/C). The RiTA Race Committee has been given the duty, responsibility and authority by the Directors of RiTA to operate a series of races, interpret all rules and conditions, and resolve protests. All Race Committee decisions will be final.
- 3. Advertising:**
 - 3.1. Advertising is permitted in accordance with ISAF Regulation 20.
 - 3.2. Boats may be required to display advertising chosen and supplied by the organising authority (sponsor flags on backstay)
- 4. Entry & Eligibility:**
 - 4.1. The RiTA series of races is open to all seaworthy sailboats which are not less than 20 feet in length and who have a PHRF rating or equivalent for the SE USA area or as determined by the race committee.
 - 4.2. Competitors must have submitted a complete Registration Form to the Race Committee before 0900 on the day of the race they intend to partake in, together with the required registration fee(s).
- 5. Registration & Fees**
 - 5.1. Early Registration ends May 1st.
 - 5.2. Competitors may register anytime before 0900 on the day of the race for any of the daily races.
 - 5.3. Registration fees are \$105 Per Race, or \$525 for the entire regatta. Early Registration rate of \$420 for the entire regatta if paid in full and registration form received on or before the early registration cut off day at 1700 hrs.
- 6. Fleets/Classes:** The intention is to have 4 classes of boats but subject to change.
 - 6.1. PHRF with spinnaker class
 - 6.2. PHRF without spinnaker class
 - 6.3. Mother Tub class
 - 6.4. Multihull class
- 7. Event Format:**
 - 7.1. The Race Committee will attempt to accommodate all registered competitors as far as possible.
 - 7.2. The regatta will constitute a 5 races series.
 - 7.3. Each class must have a minimum of 3 boats competing. If enough competitors attend additional classes will be created on an as needed basis and determined by the Race Committee.
 - 7.4. Intended classes of boats for this event will a PHRF with spinnaker, a PHRF without spinnaker, a non-spinnaker Mother Tub class, and a multi hull class.

7.5. Schedule of Events:

- June 22 Regatta registration begins at 1600
 Skippers Meeting at Bluff House 1700
- June 23 Race #1 Green Turtle “round the bouys” start at 1100
 Awards presentation New Plymouth, Green Turtle Cay at 1700
- June 24 Lay Day Fleet moves to Guana Cay, Party @ Grabbers 1700
- June 25 Race #2 Guana Cay “round the bouys” start at 1100
 Awards presentation at Kidds Cove at 1700
- June 26 Race #3 Great Guana Cay to Marsh Harbour start at 1100
 Awards presentation at Colors Bahamian Restaurant at 1700
- June 27 Race #4 Marsh Harbour to Elbow Cay start at 1100.
 Awards presentation at Sea Spray Marina at 1700
- June 28 Race #5 Hope Town “round the bouys” start at 1100
 Awards presentation at Hope Town Inn & Marina at 1700

- 7. Sail Numbers:** Sail numbers ARE REQUIRED on both sides of the mainsail. It is difficult for the Race Committee to read names of yachts off their sterns during a race. A yacht without a sail number to identify itself will not be scored.
- 8. Scoring & Penalties:** The low point scoring system of Appendix A will be used. Penalties and protests in accordance with RRS 2025-28. No option to drop races. The intent is to have a fun and friendly regatta where formal protests are kindly and graciously discouraged, however severe misconduct will result in disqualification from the entire event and potentially future RiTA events.
- 9. Crew:** The minimum crew shall be the skipper plus one crew member, unless previously approved by the Race Committee. There is no maximum number of crew. The number of crew must remain the same throughout each race.
- 10. Starting Line:** The Starting Line will be between a mark and an orange flag displayed from a staff on the Race Committee Boat. There will be a bouy stationed 10 feet downwind off the stern of race committee boat, this bouy will act as an extension of the Race Committee boat and any contact with this bouy will be considered as contact with RC Boat and the offending boat shall penalized in accordance with the Racing Rules.
- 11. Checking In Before Every Race Start:** As soon as practical after the Committee Boat is positioned on station, and prior to the first warning signal, all yachts are required to be identified as participating in the race. This should be done by sailing past the Committee Boat’s stern on starboard tack and hailing the yacht’s sail number. Yachts not checking in this manner before each race may not be scored for that race. Checking in by VHF Radio IS NOT SUGGESTED. The RC would like to identify each yacht visually.
- 12. Start Times.** The first warning signal for all race days is scheduled for 1100 hours. Yachts in all fleets should have checked in prior to the first warning signal. Races shall be started by using the following signals. Competitors shall rely on visual signals; the absence of a sound signal shall be disregarded.
- 12.1. Class start sequence: PHRF with Spinnakers then PHRF without Spinnakers, then Mother Tub class, followed by Multihull class. The sequence of class starts may be altered, rely on visual start signals and ensure that you are starting with the correct fleet.

SIGNAL	FLAG AND SOUND	MINUTES BEFORE STARTING SIGNAL
Warning	Class Flag; 1 horn	5
Preparatory	P Flag; 1 horn	4
One-minute	P Flag removed; 1 long sound	1
Start	Class Flag Removed; 1 sound	0
The warning signal for each subsequent class start shall be made after the starting signal of the preceding class.		

- 13. Communications:** All official Race Committee communications will be held on the VHF Channel 78. Non-official transmissions should be conducted on other working channels.
- 14. Keeping Clear:** Once the starting sequence begins, yachts shall keep clear of the starting area until their fleet signals begin. Any yacht violating this rule is subject to protest.
- 15. INDIVIDUAL RECALL:** If a yacht or a group of yachts are over the starting line early, the "X" flag will be displayed with one sound signal. After the premature starter(s) are identified, an attempt will be made to hail those involved on VHF Channel 78. Failure to make or to receive such hail shall not relieve a yacht of the responsibility to start properly and will not be grounds for redress.
- 16. GENERAL RECALL:** A general recall shall be signaled by displaying the FIRST REPEATER PENNANT and making two (2) sound signals after the starting signal. After the Starting Signal, the First Repeater Pennant will be lowered with one sound signal, and one minute after that, the FLEET COLOR FLAG for the recalled fleet will be displayed with one sound signal, restarting the sequence. The start of all fleets not previously started will be delayed accordingly.
- 17. TEMPORARY POSTPONEMENTS:** A temporary postponement will be signaled by displaying the ANSWERING PENNANT with two sound signals. All postponements will be for five (5) minute intervals or multiples of five minutes as required. An announcement on VHF Channel 78 may be made if the temporary postponement is for any long period due to no wind, etc.
- 18. ABANDONMENT:** In the event the Race Committee must abandon or cancel a race the "N" FLAG will be displayed, and three sound signals will be made. Following this signal, expect a message broadcast on VHF Channel 78 as to whether the racing will be re-started or cancelled for the day.
- 19. COURSES:** Race courses for each day's race will be selected from the course charts provided. The courses selected will be posted on a large board displayed on the Race Committee boat. In addition to the courses to be sailed, the board on the Committee Boat will display the approximate bearing to the first mark and the distance to the first mark from the Start Line. The course charts are detailed in Race Course appendix.
- 20. FINISH:** The Finish line will be between the Finish mark and an orange flag on the Committee boat. A sound signal will be made for each yacht properly crossing the finish line.
- 21. SHORTENED COURSE:** The course may be shortened at any mark of the course. In this event, the Committee will station a boat at that mark and display the "S" FLAG. The finish line will be between the R/C boat displaying the "S" Flag and the adjacent mark. The course may be shortened for a specific fleet or fleets by displaying FLEET COLOR FLAG(S) in conjunction with the "S" FLAG at a mark. This signifies that the course is shortened only for the fleet(s) whose color flag is displayed.
- 22. TIME LIMIT:** Any yacht who fails to finish in less than 3.5 hours for the point to point race or less than 2.5 hours for the round the bouys races shall be scored DNF.
- 23. MISSING MARK:** In the event that a mark is lost or is moving, a R/C boat may replace that mark by taking up position at the correct location and displaying the "M" FLAG. All yachts should round that boat instead of the mark.
- 24. FOULING A MARK:** Should a yacht touch or foul a mark, that yacht may exonerate herself by, as soon as possible, sailing well clear of all other yachts, and while remaining clear, immediately making a complete 360° turn including one tack and one gybe in accordance with RRS 44.1
- 25. RETIRING FROM A RACE:** Any yacht retiring from a race after having been in the starting area and identified as a starter must notify the Race Committee on VHF Channel 78 and be acknowledged as retiring from the race.

26. PROTESTS: Protests are discouraged since this is intended to be a fun regatta. However, if a serious infraction occurs, a protest will be heard as soon as possible after the completion of the race. All protests must comply fully with RRS 61. In addition, the skipper protesting must notify the Race Committee at the finish of his race of his intention to protest and must deliver that protest in writing to the Race Committee no more than one (1) hour after the last yacht has finished the race. A deposit of \$100 shall accompany the protest. This deposit will be forfeit if the Protest Committee finds that the protest is frivolous or unwarranted. Decisions of the Protest Committee are final and not appealable.


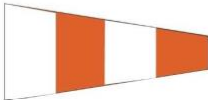
27. Responsibility and Disclaimer of Liability: Competitors participate entirely at their own risk. See RRS rule 4, Decision to Race. The Directors, Flag Officers, and Staff Members of the RiTA Regatta Race Committee and any and all Sponsors shall not be held liable for, nor will accept any responsibility for any injury or loss of life to participants or others. In addition, RiTA shall not be responsible or held liable in any way, for any loss of, or damage to any vessel or property damage suffered in any way, from any cause, occurring during, or related to any and all RiTA race activity or any event or activity associated with the Regatta. The safety of a yacht or sailing vessel and her crew, the decision as to whether or not to start, and having started, whether or not to continue is the sole and exclusive responsibility of each yacht's skipper.

28. DISPOSAL OF REFUSE: The discharge of refuse into the water is prohibited during the entirety of this event. Any boat observed to be in violation is subject to protest and may be disqualified from the entire event.

29. ADDENDUM TO THE SAILING INSTRUCTIONS: Addendum or Changes to these sailing instructions may be made at the discretion of the Race Committee. Any and all changes will be announced prior to each race. If an Addendum is posted, a notice to the fleet as to where it is posted will be made on VHF Channel 16 & 78 by the Race Committee and on the Event Facebook page and the Whatsapp Group Chat



Guide to R/C Signal Flags

 <p>"L" Come Within Hail or Follow Me (yellow & black)</p>	 <p>"P" Preparatory Signal (white on blue)</p>
 <p>"AP" Temporary Postponement (red & white)</p>	 <p>"S" Shorten Course Finish Here. (blue on white)</p>
 <p>"X" Individual Recall (blue cross on white)</p>	 <p>"M" Mark Replace- ment Round This Vessel (white X on blue)</p>
 <p>"1st Sub." General Recall (yellow on blue)</p>	 <p>"N" Races Aban- doned. Will Be Restarted Shortly (blue & white)</p>
	 <p>"H" Races Postponed To Another Day (white & red)</p>

FLEETS/CLASSES:

Fleets will be established for PHRF Spinnaker, PHRF Non-Spinnaker, Mother Tub, and Multihull with as many classes or subdivisions of each as the number of entries dictates. Skippers will be advised of the class divisions at the skippers meeting or before the first race.

RITA FLEET- RACING YACHTS CARRYING FULL SAILS WITH SPINNAKERS:

Skippers of RITA yachts are asked to provide evidence of a current rating as issued by a sanctioned PHRF organization. Yachts will be assigned their ratings for the entire series and ratings may be adjusted to conform with those issued by PHRF of Southeast Florida.

PHRF FLEET- RACING YACHTS WITH OUT SPINNAKERS OR SPECIALITY SAILS:

Skippers of PHRF yachts are asked to provide evidence of a current rating as issued by a sanctioned PHRF organization. Yachts will be assigned their ratings for the entire series and ratings may be adjusted to conform with those issued by PHRF of Southeast Florida.

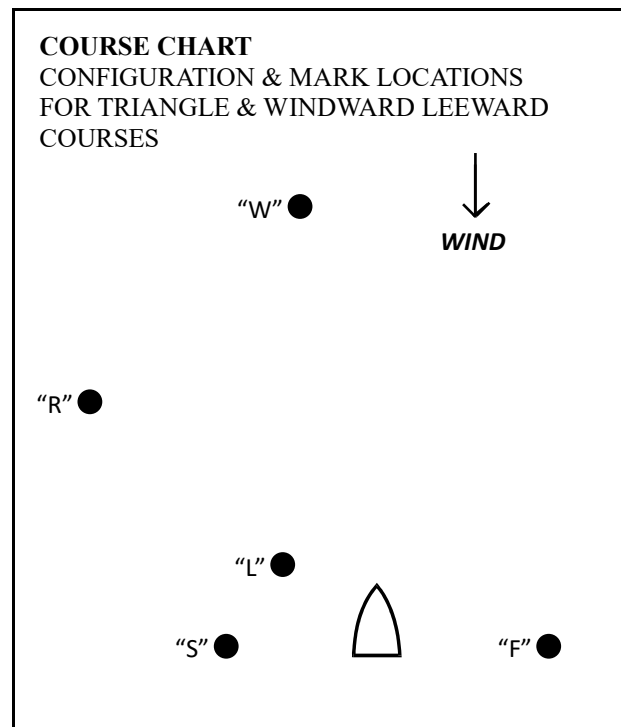
MOTHER TUB CLASS

These classes are established for boats equipped for cruising that do not normally compete or race competitively. No spinnakers or other specialty sails are allowed to be used in these classes, and handicaps assigned by the Race Committee may be adjusted from race to race in an effort to afford all "Mother Tub" yachts an equal opportunity to win.

MULTIHULL FLEET - CRUISING MULTIHULL YACHTS:

Classes within this fleet may be established for spinnaker & non-spinnaker yachts providing there are enough entries. One-design multihull classes may be established if five or more one-design multihull yachts enter the entire series. Ratings for multihull yachts will be assigned by the Race Committee based on MASF/PHRF handicap allowances.

Race #1 June 23 Green Turtle Cay "Round The Buoys"



Course #1

Start - W - R - L - W - L - W - Finish

Course #2

Start - W - R - L - W - Finish

Course #3

Start - W - R - L - W - R - L - Finish

Course #4

Start - W - R - L - W - R - Finish

Course #5

Start - W - L - W - L - W - Finish

Course #6

Start - W - L - W - Finish

START & FINISH

The start line will be established in an area west of Green Turtle Cay in anticipation of an east southeast wind. The direction of the wind on the day of the race will determine the exact location of the start-finish area and all yachts should be prepared to rendezvous with the Race Committee early enough to check in without interfering with fleets already in their starting sequence.

START & FINISH MARK is an inflatable buoy. Start and finish between the mark and the orange flag on the R/C boat.

MARKS OF THE COURSE

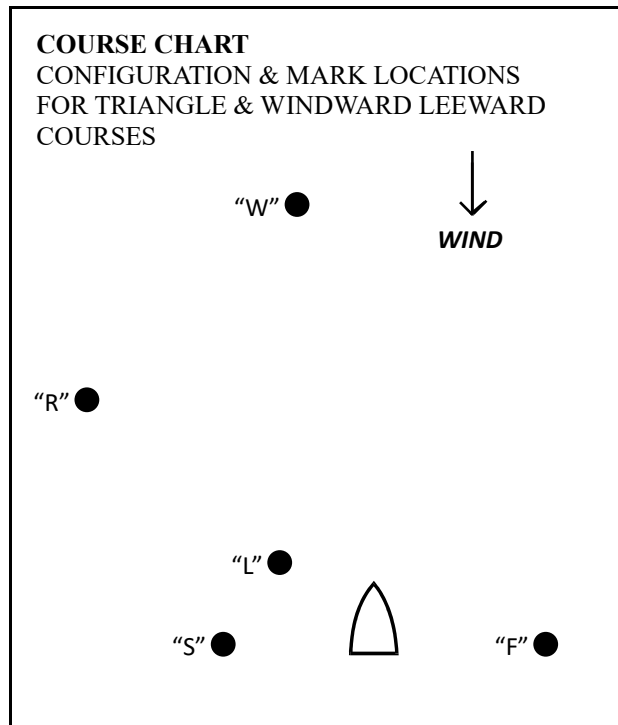
All course marks are inflatable buoys. Leave ALL COURSE MARKS TO PORT.

"W" Windward Mark - A mark upwind 1 to 3 miles from the start, bearing and distance to be displayed by the R/C on conjunction with the course designation.

"L" Leeward Mark - A mark located 50 yards in front of the R/C boat and Start / Finish line as indicated on the course diagram. This mark may be passed to either side on the first leg of the course.

"R" Reaching Mark - A mark located on the port side of the course as indicated on the course diagram.

Race #2 June 25 Guana Cay "Round The Bouys"



Course #1

Start - W - R - L - W - L - W - Finish

Course #2

Start - W - R - L - W - Finish

Course #3

Start - W - R - L - W - R - L - Finish

Course #4

Start - W - R - L - W - R - Finish

Course #5

Start - W - L - W - L - W - Finish

Course #6

Start - W - L - W - Finish

START & FINISH

The start line will be established in an area southeast of Guana Cay harbor in anticipation of an east-southeast wind. The direction of the wind on the day of the race will determine the exact location of the start-finish area and all yachts should be prepared to rendezvous with the Race Committee early enough to check in without interfering with fleets already in their starting sequence.

START & FINISH MARK is an inflatable buoy. Start and finish between the mark and the orange flag on the R/C boat.

MARKS OF THE COURSE

All course marks are inflatable buoys. Leave ALL COURSE MARKS TO PORT.

"W" Windward Mark - A mark upwind 1 to 3 miles from the start, bearing and distance to be displayed by the R/C on conjunction with the course designation.

"L" Leeward Mark - A mark located 50 yards in front of the R/C boat and Start / Finish line as indicated on the course diagram. This mark may be passed to either side on the first leg of the course.

"R" Reaching Mark - A mark located on the port side of the course as indicated on the course diagram.

Race #3, June 26, Guana Cay to Marsh Harbour

STARTING AREA: The start line will be established in an area southwest of the entrance to Guana Cay Harbour. The direction of the wind on the day of the race will determine the exact location of the start-finish area and all yachts should be prepared to rendezvous with the Race Committee early enough to check in without interfering with fleets already in their starting sequence. The START & FINISH MARKS will be inflatable buoys. Start and finish lines are between the mark and the orange flag on the R/C boat.

COURSE DESCRIPTION

This is a destination race from Great Guana Cay to Marsh Harbour. Depending on wind conditions, this race may be shortened at a mark of the course for any or all fleets in RITA, so keep your race books handy, and study the appropriate signals!

The course(s) to be sailed will be displayed on a course board on the Race Committee Boat on the day of the race. The course will be defined by a sequence of mark designation numbers displayed on the course board in the order that they are to be rounded. Green number marks shall be rounded to starboard, and red number marks shall be rounded to port.

MARKS OF THE COURSE:

All course marks are inflatable buoys.

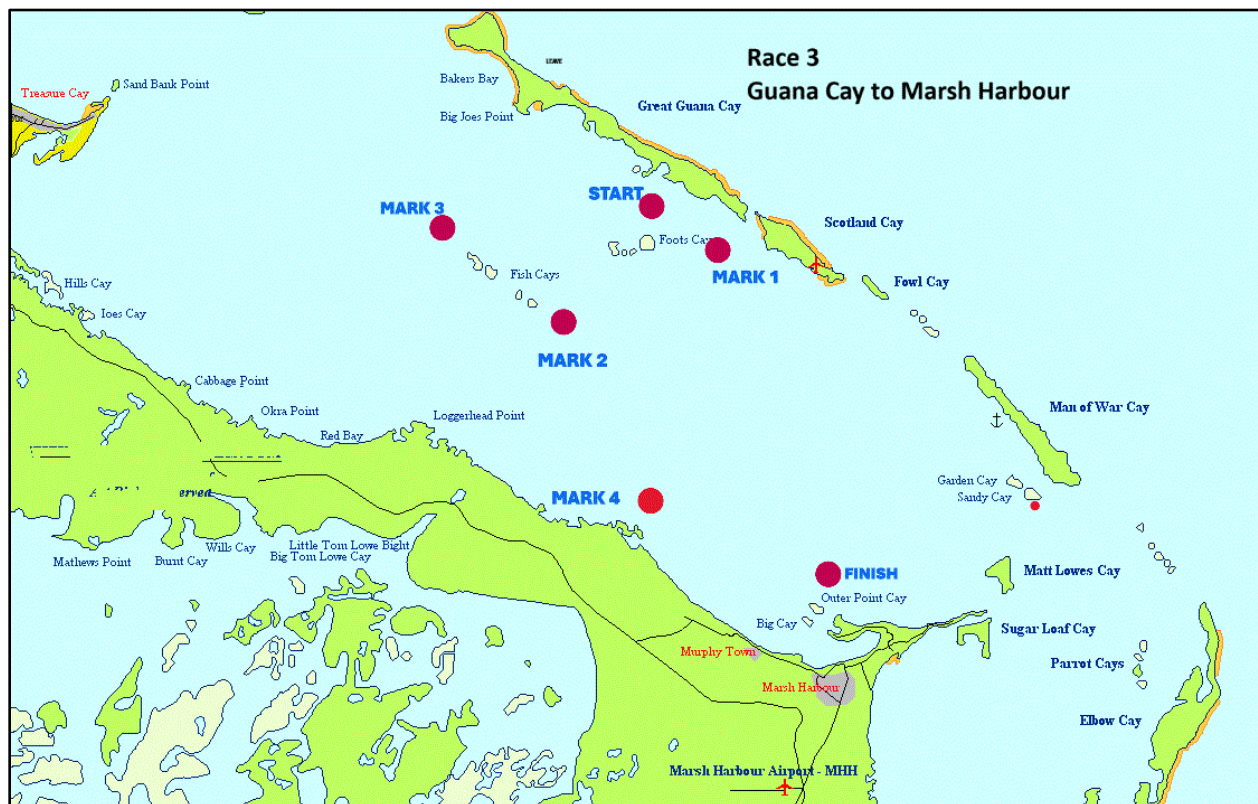
Mark 1 A mark 1 to 3 miles from the start, bearing and distance to be displayed by the R/C.

Mark 2 A mark near the southeast end of the Fish Cays.

Mark 3 A mark near the northwest end of the Fish Cays

Mark 4 A mark approximately 1 mile NE of Cistern Cay

Finish Approximately 1 mile north of the entrance to Marsh Harbour.



Race #4, June 27, Marsh Harbour to Elbow Cay Race

STARTING AREA: The start line will be established in an area approximately one mile north of the entrance to Marsh Harbour. The direction of the wind on the day of the race will determine the exact location of the start-finish area and all yachts should be prepared to rendezvous with the Race Committee early enough to check in without interfering with fleets already in their starting sequence. The START & FINISH MARKS will be inflatable buoys. Start and finish lines are between the mark and the orange flag on the R/C boat.

COURSE DESCRIPTION This is a destination race from Marsh Harbour to the vicinity of Elbow Cay. Depending on wind conditions, this race may be shortened at a mark of the course for any or all fleets in RiTA, so keep your race books handy, and study the appropriate signals!

THE COURSE:

Start > Mark 1 to Port > Mark 2 to Starboard > Garden Cay to Starboard > Sandy Cay to Starboard > Mark 3 to Port > Finish

LOCATIONS OF MARKS OF THE COURSE:

All course marks are inflatable buoys.

Mark 1 A mark 1 to 3 miles from the start, bearing and distance to be displayed by the R/C.

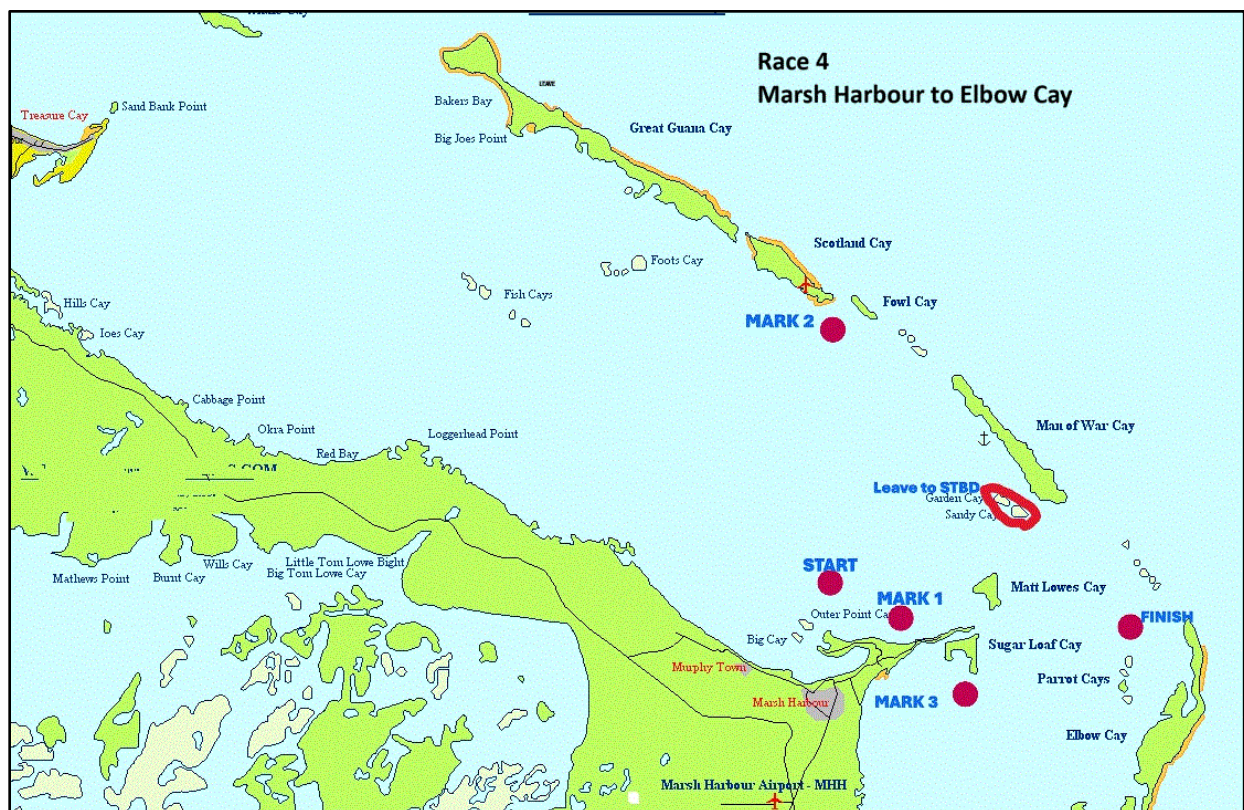
Garden Cay Must be left to Starboard

Sandy Cay Must be left to Starboard

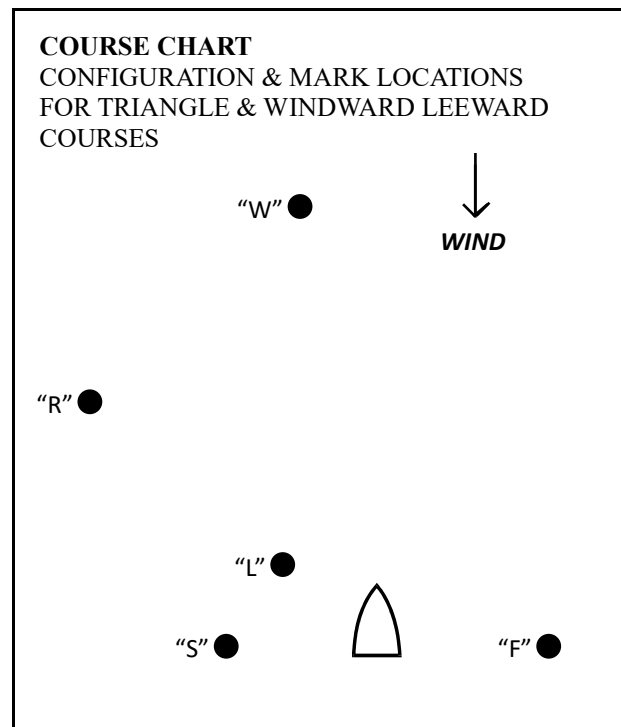
Mark 2 A mark approximately 1 mile south of Scotland Cay.

Mark 3 A mark approximately .5m south of Sugarloaf Cay.

Finish Approximately .5 miles north of the Parrot Cays.



Race #5 June 28 Hope Town "Round The Bouys"



Course #1

Start - W - R - L - W - L - W - Finish

Course #2

Start - W - R - L - W - Finish

Course #3

Start - W - R - L - W - R - L - Finish

Course #4

Start - W - R - L - W - R - Finish

Course #5

Start - W - L - W - L - W - Finish

Course #6

Start - W - L - W - Finish

START & FINISH

The start line will be established in an area East of Sugar Loaf Cay in anticipation of an east southeast wind. The direction of the wind on the day of the race will determine the exact location of the start-finish area and all yachts should be prepared to rendezvous with the Race Committee early enough to check in without interfering with fleets already in their starting sequence.

START & FINISH MARK is an inflatable buoy. Start and finish between the mark and the orange flag on the R/C boat.

MARKS OF THE COURSE

All course marks are inflatable buoys. Leave ALL COURSE MARKS TO PORT.

"W" Windward Mark - A mark upwind 1 to 3 miles from the start, bearing and distance to be displayed by the R/C on conjunction with the course designation.

"L" Leeward Mark - A mark located 50 yards in front of the R/C boat and Start / Finish line as indicated on the course diagram. This mark may be passed to either side on the first leg of the course.

"R" Reaching Mark - A mark located on the port side of the course as indicated on the course diagram.