

Sailing Instructions

Regattas in The Abacos (RiTA)

June 24th to July 1st, 2024



The overall objective of RiTA is to have Fun on the Sea of Abaco.

We welcome experienced and first-time racers with the same gusto.

This document provides for the sailing instructions to govern the “Regattas in The Abacos” to be held from June 24th to July 1st, 2024 only.

1. Rules. The event will be governed by:

- 1.1. The rules as defined in the Racing Rules of Sailing 2021-2024 (RRS)
- 1.2. The Race Committee may set rules specific to this event which may supersede parts of the RRS.

2. Management: All races and related activities shall be under the management of the RiTA Race Committee (R/C). The RiTA Race Committee has been given the duty, responsibility and authority by the Directors of RiTA to operate a series of races, interpret all rules and conditions, and resolve protests. All Race Committee decisions will be final.

3. Advertising:

- 3.1. Advertising is permitted in accordance with ISAF Regulation 20.
- 3.2. Boats may be required to display advertising chosen and supplied by the organising authority (sponsor flags on backstay)

4. Entry & Eligibility:

- 4.1. The RiTA series of races is open to all seaworthy sailboats which are not less than 20 feet in length and who have a PHRF rating or equivalent for the SE USA area or as determined by the race committee.
- 4.2. Competitors must have submitted a complete Registration Form to the Race Committee before 0900 on the day of the race they intend to partake in, together with the required registration fee(s).

5. Registration & Fees

- 5.1. Early Registration ends May 1st.
- 5.2. Competitors may register anytime before 0900 on the day of the race for any of the daily races.
- 5.3. Registration fees are \$105 Per Race, or \$525 for the entire regatta. Early Registration rate of \$420 for the entire regatta if paid in full and registration form received on or before the early registration cut off day at 1700 hrs.

6. Event Format:

- 6.1. The Race Committee will attempt to accommodate all registered competitors as far as possible.
- 6.2. The regatta will constitute a 5 races series.
- 6.3. Each class must have a minimum of 3 boats competing. If enough competitors attend additional classes will be created on an as needed basis and determined by the Race Committee.
- 6.4. Intended classes of boats for this event will a PHRF with spinnaker, a PHRF without spinnaker, a non-spinnaker Mother Tub class, and a multihull class.

6.5. Schedule of Events:

- 6.5.1. June 23rd Launch Party at Pete's Pub
- June 24th Regatta registration begins at 1300
Skippers Meeting at Sea Spray Marina at 1700
- June 25th Race #1 Hope Town Triangle Start 1100
Awards presentation & after party at Hope Town Inn & Marina at 1730
- June 26th Race# 2 Hope Town to Marsh Harbour Race Start at 1100
Awards presentation & after party at the Jib Room at 1730
- June 27th Lay Day Street Party at Colors Restaurant 1500
- June 28th Race #3 Great Guana Cay "round the bouys" start at 1100
Awards presentation & after party at Kidds Cove at 1730
- June 29th Race #4 Great Guana Cay to Green Turtle Cay start at 1100
Awards presentation & after party at New Plymouth Green Turtle Cay at 1730
- June 30th Race #5 Green Turtle Cay 'Round the Bouys' start at 1100.
Final awards presentation & after party at Tranquil Turtle Bluff House at 1730

7. Fleets/Classes: The intention is to have 4 classes of boats but subject to change. Class pennants will be provided at time of registration or at skippers meeting.

- 7.1. PHRF with spinnaker class will clearly display a white pennant on backstay.
- 7.2. PHRF without spinnaker class will clearly display a green pennant on backstay.
- 7.3. Mother Tub class will clearly display a yellow pennant on backstay.
- 7.4. Multihull class will clearly display a blue pennant on backstay.

8. Sail Numbers: Sail numbers ARE REQUIRED on both sides of the mainsail. It is difficult for the Race Committee to read names of yachts off their sterns during a race. A yacht without a sail number to identify itself will not be scored.

9. Scoring & Penalties: The low point scoring system of Appendix A will be used. Penalties and protests in accordance with RRS 2021-24. No option to drop races. The intent is to have a fun and friendly regatta where formal protests are kindly and graciously discouraged, however severe misconduct will result in disqualification from the entire event and potentially future RiTA events.

10. Crew: The minimum crew shall be the skipper plus one crew member, unless previously approved by the Race Committee. There is no maximum number of crew. The number of crew must remain the same throughout each race.

11. Starting Line: The Starting Line will be between a mark and an orange flag displayed from a staff on the Race Committee Boat.

12. Checking In Before Every Race Start: As soon as practical after the Committee Boat is positioned on station, and prior to the first warning signal, all yachts are required to be identified as participating in the race. This should be done by sailing past the Committee Boat's stern on starboard tack and hailing the yacht's sail number. Yachts not checking in this manner before each race may not be scored for that race. Checking in by VHF Radio IS NOT SUGGESTED. The RC would like to identify each yacht visually.

13. Start Times. The first warning signal for all race days is scheduled for 1100 hours. Yachts in all fleets should have checked in prior to the first warning signal. Races shall be started by using the following signals. Competitors shall rely on visual signals; the absence of a sound signal shall be disregarded.

- 13.1. Class start sequence: PHRF with Spinnakers then PHRF without Spinnakers, then Mother Tub class, followed by Multihull class. The sequence of class starts may be altered, rely on visual start signals and ensure that you are starting with the correct fleet.

SIGNAL	FLAG AND SOUND	MINUTES BEFORE STARTING SIGNAL
Warning	Class Flag; 1 horn	5
Preparatory	P Flag; 1 horn	4
One-minute	P Flag removed; 1 long sound	1
Start	Class Flag Removed; 1 sound	0

The warning signal for each subsequent class start shall be made 1 minute after the starting signal of the preceding class.

14. Communications: All official Race Committee communications will be held on the VHF Channel 78. Non-official transmissions should be conducted on other working channels.

15. Keeping Clear: Once the starting sequence begins, yachts shall keep clear of the starting area until their fleet signals begin. Any yacht violating this rule is subject to protest.

16. INDIVIDUAL RECALL: If a yacht or a group of yachts are over the starting line early, the “X” flag will be displayed with one sound signal. After the premature starter(s) are identified, an attempt will be made to hail those involved on VHF Channel 78. Failure to make or to receive such hail shall not relieve a yacht of the responsibility to start properly and will not be grounds for redress.

17. GENERAL RECALL: A general recall shall be signalled by displaying the FIRST REPEATER PENNANT and making two (2) sound signals after the starting signal. After the Starting Signal, the First Repeater Pennant will be lowered with one sound signal, and one minute after that, the FLEET COLOR FLAG for the recalled fleet will be displayed with one sound signal, restarting the sequence. The start of all fleets not previously started will be delayed accordingly.

18. TEMPORARY POSTPONEMENTS: A temporary postponement will be signalled by displaying the ANSWERING PENNANT with two sound signals. All postponements will be for five (5) minute intervals or multiples of five minutes as required. An announcement on VHF Channel 78 may be made if the temporary postponement is for any long period due to no wind, etc.

19. ABANDONMENT: In the event the Race Committee must abandon or cancel a race the “N” FLAG will be displayed, and three sound signals will be made. Following this signal, expect a message broadcast on VHF Channel 78 as to whether the racing will be re-started or cancelled for the day.

20. COURSES: Race courses for each day’s race will be selected from the course charts provided. The courses selected will be posted on a large board displayed on the Race Committee boat. In addition to the courses to be sailed, the board on the Committee Boat will display the approximate bearing to the first mark and the distance to the first mark from the Start Line. The course charts are detailed in Race Course appendix.

21. FINISH: The Finish line will be between the Finish mark and an orange flag on the Committee boat. A sound signal will be made for each yacht properly crossing the finish line.

22. SHORTENED COURSE: The course may be shortened at any mark of the course. In this event, the Committee will station a boat at that mark and display the “S” FLAG. The finish line will be between the R/C boat displaying the “S” Flag and the adjacent mark. The course may be shortened for a specific fleet or fleets by displaying FLEET COLOR FLAG(S) in conjunction with the “S” FLAG at a mark. This signifies that the course is shortened only for the fleet(s) whose color flag is displayed.

23. MISSING MARK: In the event that a mark is lost or is moving, a R/C boat may replace that mark by taking up position at the correct location and displaying the "M" FLAG. All yachts should round that boat instead of the mark.

24. FOULING A MARK: Should a yacht touch or foul a mark, that yacht may exonerate herself by, as soon as possible, sailing well clear of all other yachts, and while remaining clear, immediately making a complete 360° turn including one tack and one gybe in accordance with RRS 44.1

25. RETIRING FROM A RACE: Any yacht retiring from a race after having been in the starting area and identified as a starter must notify the Race Committee on VHF Channel 78 and be acknowledged as retiring from the race.

26. PROTESTS: Protests are discouraged since this is intended to be a fun regatta. However, if a serious infraction occurs, a protest will be heard as soon as possible after the completion of the race. All protests must comply fully with RRS 61. In addition, the skipper protesting must notify the Race Committee at the finish of his race of his intention to protest and must deliver that protest in writing to the Race Committee no more than one (1) hour after the last yacht has finished the race. A deposit of \$100 shall accompany the protest. This deposit will be forfeit if the Protest Committee finds that the protest is frivolous or unwarranted. Decisions of the Protest Committee are final and not appealable.

27. Responsibility and Disclaimer of Liability: Competitors participate entirely at their own risk. See RRS rule 4, Decision to Race. The Directors, Flag Officers, and Staff Members of the RiTA Regatta Race Committee and any and all Sponsors shall not be held liable for, nor will accept any responsibility for any injury or loss of life to participants or others. In addition, RiTA shall not be responsible or held liable in any way, for any loss of, or damage to any vessel or property damage suffered in any way, from any cause, occurring during, or related to any and all RiTA race activity or any event or activity associated with the Regatta. The safety of a yacht or sailing vessel and her crew, the decision as to whether or not to start, and having started, whether or not to continue is the sole and exclusive responsibility of each yacht's skipper.

28. DISPOSAL OF REFUSE: The discharge of refuse into the water is prohibited during the entirety of this event. Any boat observed to be in violation is subject to protest and may be disqualified from the entire event.

29. ADDENDUM TO THE SAILING INSTRUCTIONS: Addendum or Changes to these sailing instructions may be made at the discretion of the Race Committee. Any and all changes will be announced prior to each race. If an Addendum is posted, a notice to the fleet as to where it is posted will be made on VHF Channel 16 & 78 by the Race Committee and on the event Facebook page

FLEETS/CLASSES:

Fleets will be established for PHRF Spinnaker, PHRF Non-Spinnaker, Mother Tub, and Multihull with as many classes or subdivisions of each as the number of entries dictates. Skippers will be advised of the class divisions at the skippers meeting or before the first race.

RITA FLEET- RACING YACHTS CARRYING FULL SAILS WITH SPINNAKERS:

Skippers of RITA yachts are asked to provide evidence of a current rating as issued by a sanctioned PHRF organization. Yachts will be assigned their ratings for the entire series and ratings may be adjusted to conform with those issued by PHRF of Southeast Florida.

PHRF FLEET- RACING YACHTS WITH OUT SPINNAKERS OR SPECIALITY SAILS:

Skippers of PHRF yachts are asked to provide evidence of a current rating as issued by a sanctioned PHRF organization. Yachts will be assigned their ratings for the entire series and ratings may be adjusted to conform with those issued by PHRF of Southeast Florida.

MOTHER TUB CLASS

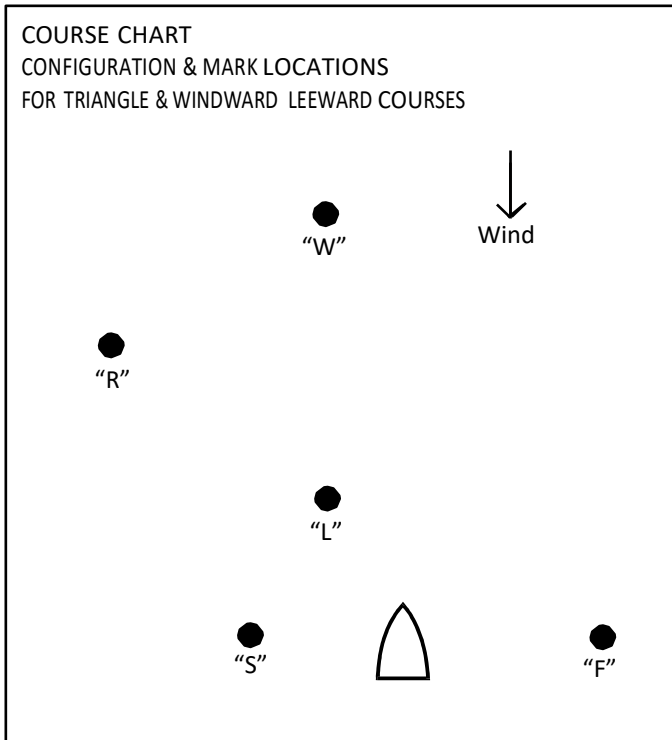
These classes are established for boats equipped for cruising that do not normally compete or race competitively. No spinnakers or other specialty sails are allowed to be used in these classes, and handicaps assigned by the Race Committee may be adjusted from race to race in an effort to afford all "Mother Tub" yachts an equal opportunity to win.

MULTIHULL FLEET - CRUISING MULTIHULL YACHTS:

Classes within this fleet may be established for spinnaker & non-spinnaker yachts providing there are enough entries. One-design multihull classes may be established if five or more one-design multihull yachts enter the entire series. Ratings for multihull yachts will be assigned by the Race Committee based on MASF/PHRF handicap allowances.

Race Course Appendix

Race #1, June 25th, HOPE TOWN "Round the Bouys"



Course Number	Details
Course #1	Start - W - R - L - W - L - Finish
Course #2	Start - W - R - L - W - Finish
Course #3	Start - W - R - L - W - R - L - Finish
Course #4	Start - W - R - L - W - R - Finish
Course #5	Start - W - L - W - L - W - Finish
Course #6	Start - W - L - W - Finish
Course #7	Start - W - R - Finish

START & FINISH AREA: The start line will be established in an area near Matt Lowe’s Cay with anticipation of an east-southeast wind. The direction of the wind on the day of the race will determine the exact location of the start-finish area and all yachts should be prepared to rendezvous with the Race Committee early enough to check in without interfering with fleets already in their starting sequence. The START & FINISH MARKS will be inflatable buoys. Start and finish lines are between the mark and the orange flag on the R/C boat.

MARKS OF THE COURSE: All course marks are inflatable buoys.

“W” Windward Mark - A mark upwind 1 to 3 miles from the start, bearing and distance to be displayed by the R/C on conjunction with the course designation.

“L” Leeward Mark - A mark located 50 yards in front of the R/C boat and Start / Finish line as indicated on the course diagram. This mark may be passed to either side on the first and last leg of the race.

“R” Reaching Mark - A mark located on the port side of the course as indicated on the course diagram.

Course Marks “W”, “R”, and “L” are inflatable buoys. Leave ALL COURSE MARKS TO PORT. Marks “S” & “F” are inflatable buoys and used only for the Start & Finish line. Keep clear of Start and Finish line except when starting and finishing.

The course selected will be posted on a large board displayed on the Race Committee boat. In addition to the course to be sailed, the board on the Committee Boat will display the approximate bearing to the first mark and the distance to the first mark from the Start Line.

**Race #2, June 26th, Hope Town to Marsh Harbour
Race**

STARTING AREA: The start line will be established in an area near Matt Lowe’s Cay with anticipation of an east-southeast wind. The direction of the wind on the day of the race will determine the exact location of the start-finish area and all yachts should be prepared to rendezvous with the Race Committee early enough to check in without interfering with fleets already in their starting sequence. The START & FINISH MARKS will be inflatable buoys. Start and finish lines are between the mark and the orange flag on the R/C boat.

COURSE

Start
Mark 1 to Port
Sandy Cay to Port
Garden Cay to Port
Mark 2 to Port
Finish

MARKS OF THE COURSE:

All course marks are inflatable buoys.

Mark 1 A mark 1 to 3 miles from the start, bearing and distance to be displayed by the R/C.

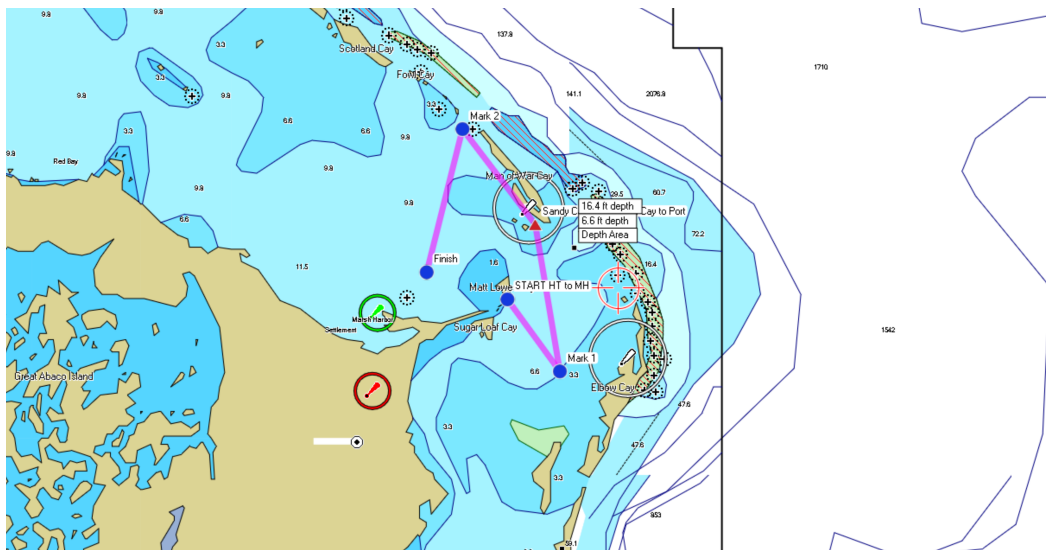
Sandy Cay Must be left to Port

Garden Cay Must be left to Port

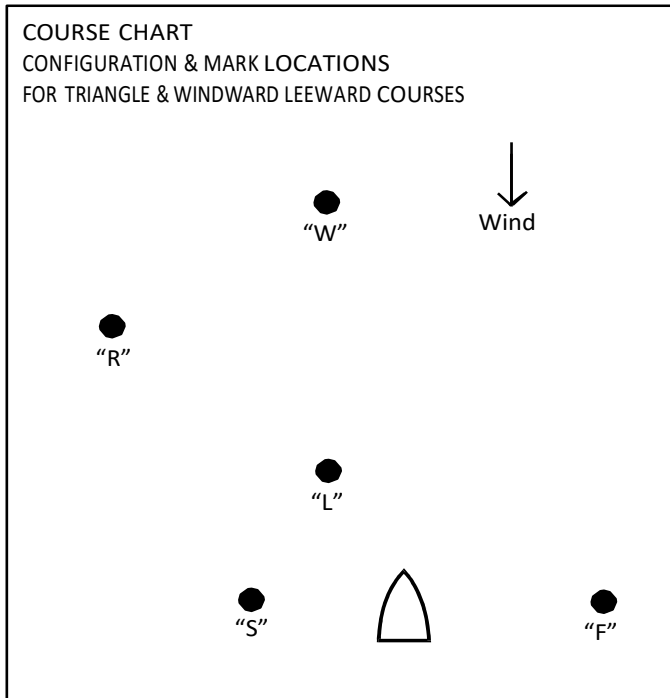
Mark 2 A mark approximately .5 miles west of the NW tip of Man O’War Cay

Finish Approximately 1.5 miles NE of the entrance to Marsh Harbour

Dinghy Tow drop off near N. Parrot Cay off Hopetown. The dinghy tow boat will have a white flag with a RITA logo. Please ensure dinghy is securely tied. Tow rope will be 200’ rope with bouys and loops. This is a long and tedious volunteer job, buy the tow crew a cold beverage when you see them. Dinghy pick up will be in Fannie Bay at the entrance to Marsh Harbour. Please be kind and considerate of other participants and their dinghies



Race #3, June 28th, Great Guana Cay "Round the Bouys"



Course Number Details	
Course #1:	Start - W - R - L - W - L - Finish
Course #2:	Start - W - R - L - W - Finish
Course #3:	Start - W - R - L - W - R - L - Finish
Course #4:	Start - W - R - L - W - R - Finish
Course #5:	Start - W - L - W - L - W - Finish
Course #6:	Start - W - L - W - Finish
Course #7:	Start - W - R - Finish

START & FINISH AREA: The start line will be established in an area between Marsh Harbour and Guana Cay with an anticipation of an east-southeast wind. The direction of the wind on the day of the race will determine the exact location of the start-finish area and all yachts should be prepared to rendezvous with the Race Committee early enough to check in without interfering with fleets already in their starting sequence. The START & FINISH MARKS will be inflatable buoys. Start and finish lines are between the mark and the orange flag on the R/C boat.

MARKS OF THE COURSE: All course marks are inflatable buoys.

"W" Windward Mark - A mark upwind 1 to 3 miles from the start, bearing and distance to be displayed by the R/C on conjunction with the course designation.

"L" Leeward Mark - A mark located 50 yards in front of the R/C boat and Start / Finish line as indicated on the course diagram. This mark may be passed to either side on the first and last leg of the race.

"R" Reaching Mark - A mark located on the port side of the course as indicated on the course diagram.

Course Marks "W", "R", and "L" are inflatable buoys. Leave ALL COURSE MARKS TO PORT. Marks "S" & "F" are inflatable buoys and used only for the Start & Finish line. Keep clear of Start and Finish line except when starting and finishing.

The course selected will be posted on a large board displayed on the Race Committee boat. In addition to the course to be sailed, the board on the Committee Boat will display the approximate bearing to the first mark and the distance to the first mark from the Start Line

Race #4, June 29th, Great Guana Cay To Green Turtle Cay

STARTING AREA: will be established 1/3-mile SW of Orchid Bay Marina and between the inflatable buoy and an orange flag on the Race Committee boat. Yachts will start in a westerly direction towards Green Turtle Cay. This Race format may have a "Pursuit Start" where all vessels start at a time specified by RC and is based upon their rating. See RC for further explanation.

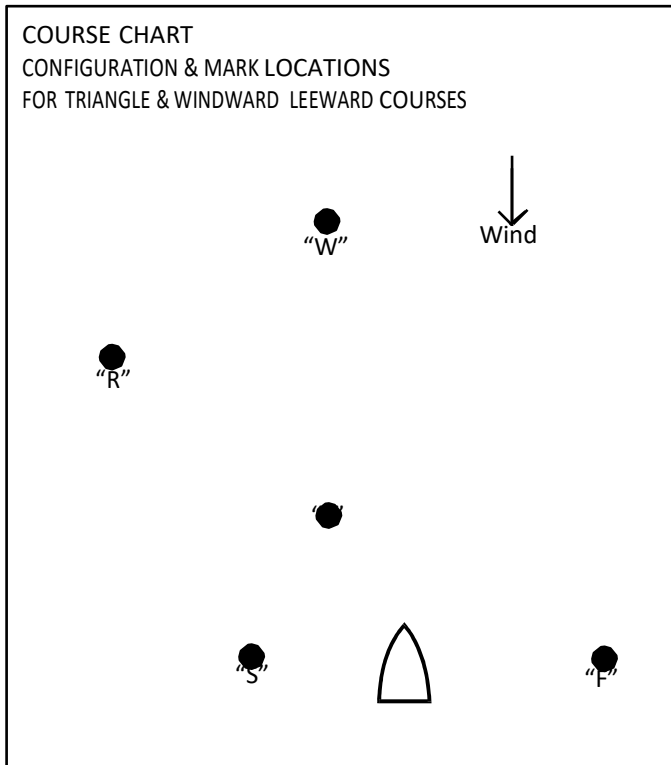
COURSE: Yachts will head north-westerly towards Green Turtle Cay leaving Whale Cay to port. Safe navigation of the Whale Cay passage is at the discretion and sole responsibility of the skipper of the vessel. After passing Whale Cay proceed to the Finish Line.

FINISH LINE: The Finish line will be established ½ mile NE of the Ferry Dock at Treasure Cay and between the inflatable buoy and an orange flag on the Race Committee boat. Vessels will finish in a northwesterly direction.



Dinghy Tow drop off will be easterly of Delias Cay and Fishers Bay indicated with orange star on chart. The dinghy tow boat will fly a white flag with a RITA logo. Please ensure dinghy is securely tied. Tow rope will be a 200' rope with bouys and loops. This is a long and tedious volunteer job, buy the tow crew a cold beverage when you see them. Dinghy pick up will be northerly of the finish line. Please be kind and considerate of other participants and their dinghies.

Race #5, June 30th, Green Turtle Cay "Round The Bouys"



Course Number Details
Course #1: Start – W – R – L – W – L – Finish
Course #2: Start – W – R – L – W – Finish
Course #3: Start – W – R – L – W – R – L – Finish
Course #4: Start – W – R – L – W – R – Finish
Course #5: Start – W – L – W – L – W – Finish
Course #6: Start – W – L – W – Finish
Course #7: Start – W – R Finish

START & FINISH AREA: The start line will be established in an area between Marsh Harbour and Guana Cay with an anticipation of an east-southeast wind. The direction of the wind on the day of the race will determine the exact location of the start-finish area and all yachts should be prepared to rendezvous with the Race Committee early enough to check in without interfering with fleets already in their starting sequence. The START & FINISH MARKS will be inflatable buoys. Start and finish lines are between the mark and the orange flag on the R/C boat.

MARKS OF THE COURSE: All course marks are inflatable buoys.

"W" Windward Mark - A mark upwind 1 to 3 miles from the start, bearing and distance to be displayed by the R/C on conjunction with the course designation.

"L" Leeward Mark - A mark located 50 yards in front of the R/C boat and Start / Finish line as indicated on the course diagram. This mark may be passed to either side on the first and last leg of the race.

"R" Reaching Mark - A mark located on the port side of the course as indicated on the course diagram.

Course Marks "W", "R", and "L" are inflatable buoys. Leave ALL COURSE MARKS TO PORT. Marks "S" & "F" are inflatable buoys and used only for the Start & Finish line. Keep clear of Start and Finish line except when starting and finishing.



Guide to R/C Signal Flags

 <p>"L" Come Within Hail or Follow Me (yellow & black)</p>	 <p>"P" Preparatory Signal (white on blue)</p>
 <p>"AP" Temporary Postponement (red & white)</p>	 <p>"S" Shorten Course Finish Here. (blue on white)</p>
 <p>"X" Individual Recall (blue cross on white)</p>	 <p>"M" Mark Replace- ment Round This Vessel (white X on blue)</p>
 <p>"1st Sub." General Recall (yellow on blue)</p>	 <p>"N" Races Aban- doned. Will Be Restarted Shortly (blue & white)</p>
 <p>"H" Races Postponed To Another Day (white & red)</p>	 <p>"H" Races Postponed To Another Day (white & red)</p>