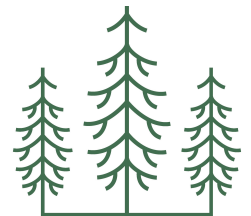


The Cottages

AT LAKE REDWINE



Jessica Mottola
770-376-7778
Jessica@ListWithEvergreen.com
TheCottagesAtLakeRedwine.com



EVERGREEN

STANDARD FEATURES

EXTERIOR

- Solid wood front entry door
- Stone front porch floor
- Fiber cement siding and accents
- Architectural shingles
- Covered back porch with stone surround fireplace and vaulted beadboard ceiling
- Sodded front, back, and sides
- Insulated auto garage door with 2 remotes
- Covered pedestrian door from garage to side yard
- Pella double pane windows - grids between glass
- Seamless 6" gutters with 4" downspouts

SYSTEMS AND MECHANICAL

- 15 SEER HVAC heat pump
- Spray foam insulation in roof line
- Wireless security - exterior doors and panel
- Electric car charger in garage
- Irrigation system in all sodded areas

DESIGN ELEMENTS

- Stepless ranch with optional second level spaces finished
- Open concept kitchen, eating, and living room
- Abundant windows for natural light in all rooms
- Built ins next to living room fireplace
- Pocket doors per plan
- Lever interior door handles
- Curbless shower entry
- Oversized primary closet and laundry rooms
- Walk-in pantry with 12" and 24" shelf depths
- Gameday back porch with wood burning or gas fireplace

INTERIOR

- 5" site finished engineered white oak wood or LVP throughout main
- Tile or LVP bath and laundry floors
- Vaulted living room with wood beams
- Main floor flat ceilings 9', upper 8'
- 5" cove crown in foyer, flex, and dining
- 1"x 6" base 1"x 4" casings
- Wood shelving in pantry and all closets
- 42" custom inset cabinets with soft close features
- Quartz counter tops throughout
- Tile kitchen backsplash
- Under cabinet lighting
- Wood hood with exterior ventilation
- Direct vent fireplace with tile surround and custom wood mantle
- Whirlpool stainless appliances with gas range, microwave, dishwasher, and vent hood
- Vaulted primary bedroom
- Zero entry tile shower and frameless glass enclosure in primary bath
- Handheld shower head, tile bench, and shampoo niche in primary
- Steel tub with tile surround and shampoo niche in secondary baths
- Black metal stair pickets and wood handrails and posts

COMMUNITY

- Age restricted 55+ Active Adult Community
 - Steps from amenities including pool, clubhouse, lighted tennis & pickleball courts, playground, and 300 acre lake
 - Curated exterior color palettes for aesthetic continuity
 - Community mailbox
 - Weekly lawn maintenance included in association dues
 - Sidewalks and street lights on both sides of the street
 - Touch-free trash service included in association dues
 - Coweta County public sewer
-





■ SERENBE

CHATTAHOOCHEE HILLS

PALMETTO

▲ HARTSFIELD
JACKSON
AIRPORT

DUNAWAY
GARDENS ■

■ B.T. BROWN RESEVOIR

The Cottages
AT LAKE REDWINE
■

COWETA CLUB ■

■ CANNONGATE
GOLF CLUB

TYRONE

■ NEWNAN
COUNTRY
CLUB

■ MORE SHOPPING
& RESTAURANTS

PEACHTREE CITY ►

HISTORIC
DOWNTOWN
NEWNAN

■ SOCIAL
SECURITY
OFFICE

■ MORE SHOPPING
& RESTAURANTS

ASHLEY
PARK ■

WHITE OAK
GOLF CLUB ■

■ THE LINC TRAIL

■ DONALD M. NIXON
CENTRE

■ PIEDMONT
NEWNAN
HOSPITAL

SUMMER
GROVE
GOLF CLUB ▼

SHARPSBURG

WREN



2,118 SQ FT | 3 BEDROOMS | 2.5 BATHS

UP TO 3430 SQ FT 4 BEDROOMS | 4.5 BATHS

This home features a large front porch and a covered back porch with vaulted ceilings and fireplace. Bright and spacious kitchen with large island and a walk in pantry is open to the dining area and the family room which has vaulted ceilings with wood beams, fireplace, and built ins. Private primary suite located on the back of the home features a spacious vaulted bedroom, spa bathroom with an oversized zero-entry tile shower with frameless enclosure, a generous walk in closet, and easy access to the large laundry room. Secondary bedrooms are thoughtfully distanced from the primary suite and perfectly situated for a guest room and an office. Wood tread staircase leads to the upper level that can be finished to add 1300+ sq ft of bedroom, bathroom, living, and recreation area.

WREN

The Cottages
AT LAKE REDWINE

WREN
ELEVATION A



The Cottages
AT LAKE REDWINE

WREN
ELEVATION B



ELEVATIONS DO NOT IMPACT PLAN LAYOUT

SINGLE DOOR
TRIPLE WINDOW - NO SHUTTERS
SHED DORMER
SHAKE IN GABLES

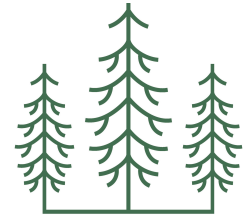
DOUBLE DOOR
TWIN WINDOW WITH SHUTTERS
GABLE DORMER
SHAKE IN AND UNDER GABLES

Jessica Mottola

770-376-7778

Jessica@ListWithEvergreen.com

TheCottagesAtLakeRedwine.com



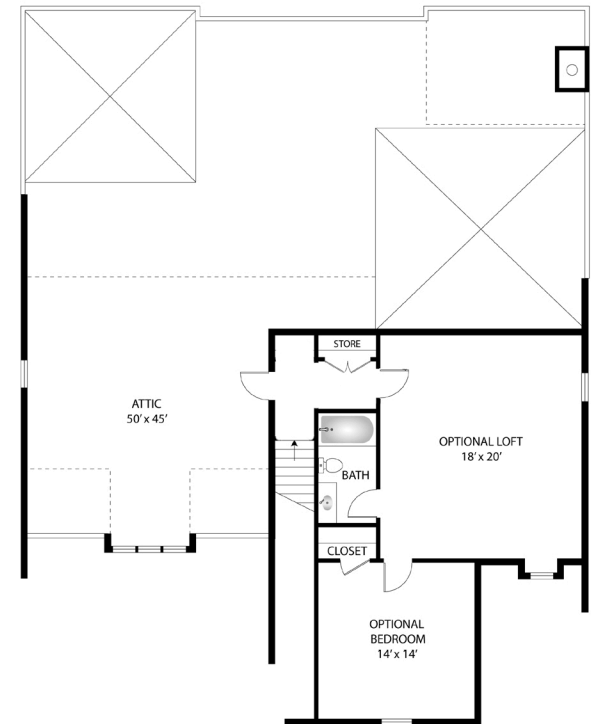
EVERGREEN

MAIN FLOOR



UPPER FLOOR

OPTIONAL UPGRADE



PROUDLY BUILT BY
Galen Sichtig

STARLING



2,201 SQ FT | 3 BEDROOMS | 2.5 BATHS



UP TO 3601 SQ FT 4 BEDROOMS | 4.5 BATHS

This home features a covered front entry and a covered back porch with vaulted ceilings and fireplace. Light filled kitchen centers around a huge island and features a walk in pantry. The kitchen is open to the dining area and the family room which has vaulted ceilings with wood beams, fireplace, and built-ins. Private primary suite located on the back of the home features a large vaulted bedroom, spa bathroom with an oversized zero-entry tile shower with frameless enclosure, a huge walk in closet, and easy access to the large laundry room. Secondary bedrooms are thoughtfully distanced from the primary suite and perfectly situated for a guest room and an office. Wood tread staircase leads to the upper level which can be finished as an upgrade option which adds approx 1400 sq ft of bedroom, bathroom, living area, and recreational space.

STARLING

The Cottages

AT LAKE REDWINE

STARLING
ELEVATION A



The Cottages

AT LAKE REDWINE

STARLING
ELEVATION B



ELEVATIONS DO NOT IMPACT PLAN LAYOUT

SINGLE DOOR - NO SHUTTERS
TRIPLE WINDOW - NO SHUTTERS
BOARD AND BATTEN IN GABLES

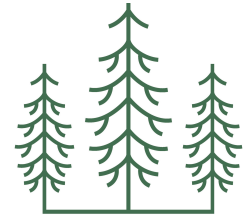
SINGLE DOOR WITH SHUTTERS
TWIN WINDOW WITH SHUTTERS
SHAKE IN AND UNDER GABLES

Jessica Mottola

770-376-7778

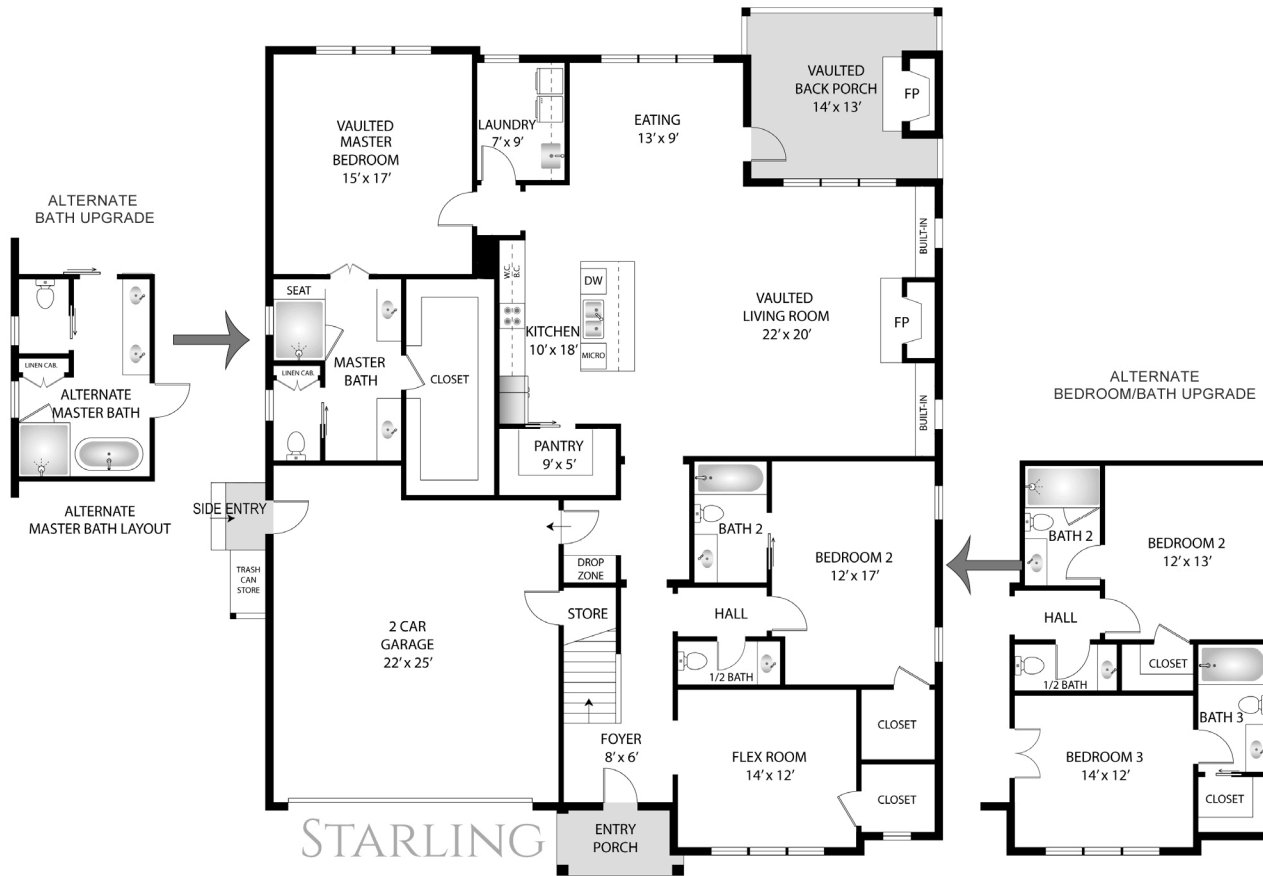
Jessica@ListWithEvergreen.com

TheCottagesAtLakeRedwine.com



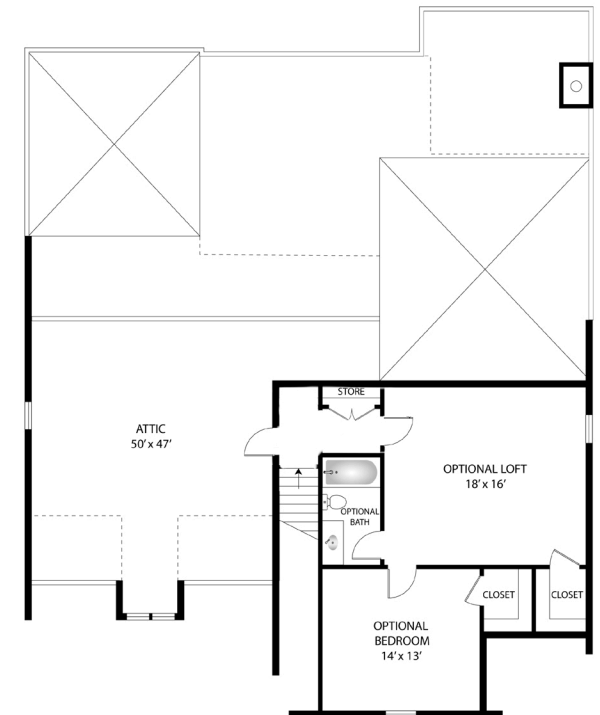
EVERGREEN

MAIN FLOOR



UPPER FLOOR

OPTIONAL UPGRADE



PROUDLY BUILT BY

Galen Lichty

PHOEBE



2,120 SQ FT | 3 BEDROOMS | 2 BATHS



UP TO 3342 SQ FT 4 BEDROOMS | 3 BATHS

This home features a recessed covered entry and the largest covered back porch of the plans. The back porch has vaulted ceilings and a stone fireplace. The interior features a gallery entry hall that leads to the open living space. The kitchen features a huge walk in pantry, large center island, and a wide-open view of the vaulted family room with wood beams, fireplace, and built-ins. The primary suite sits privately at the rear of the plan with a large vaulted bedroom, spa bathroom with an oversized zero-entry tile shower with frameless enclosure, and a huge walk in closet. Secondary bedrooms are situated on either side of the entry hall. Wood tread staircase leads to the optional upper level which can be finished to provide 1200+ sq ft of additional living space, bedroom, full bathroom, and recreational space.

PHOEBE

The Cottages

AT LAKE REDWINE

PHOEBE

ELEVATION A

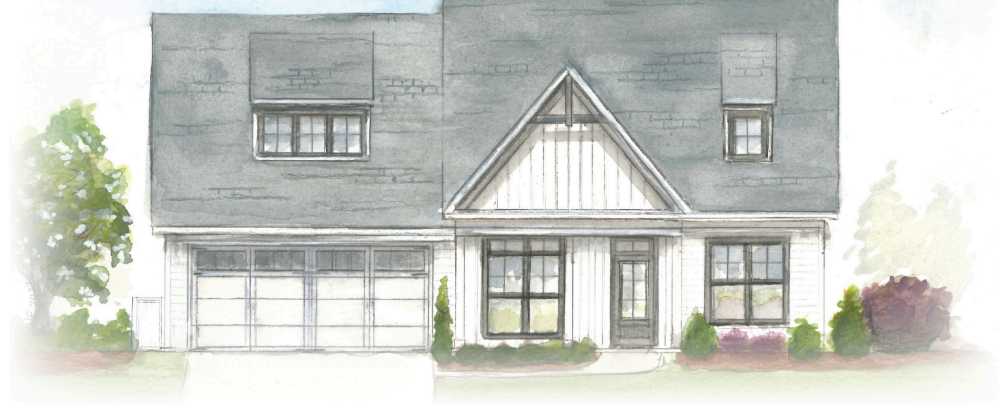


The Cottages

AT LAKE REDWINE

PHOEBE

ELEVATION B



ELEVATIONS A & B ARE TWO SEPARATE FLOOR PLANS

ALCOVE ENTRY

STACKED GABLES WITH LAP AND SHAKE

METAL ACCENT ROOF

SHUTTERS ON TWIN WINDOW

10X15 FLEX ROOM & 9X10 LAUNDRY

COVERED FRONT PORCH

LARGE SINGLE GABLE

BOARD & BATTEN IN & UNDER GABLE

10X11 FLEX ROOM

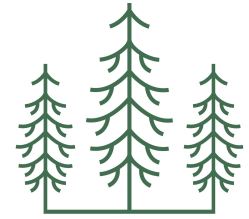
5X10 LAUNDRY

Jessica Mottola

770-376-7778

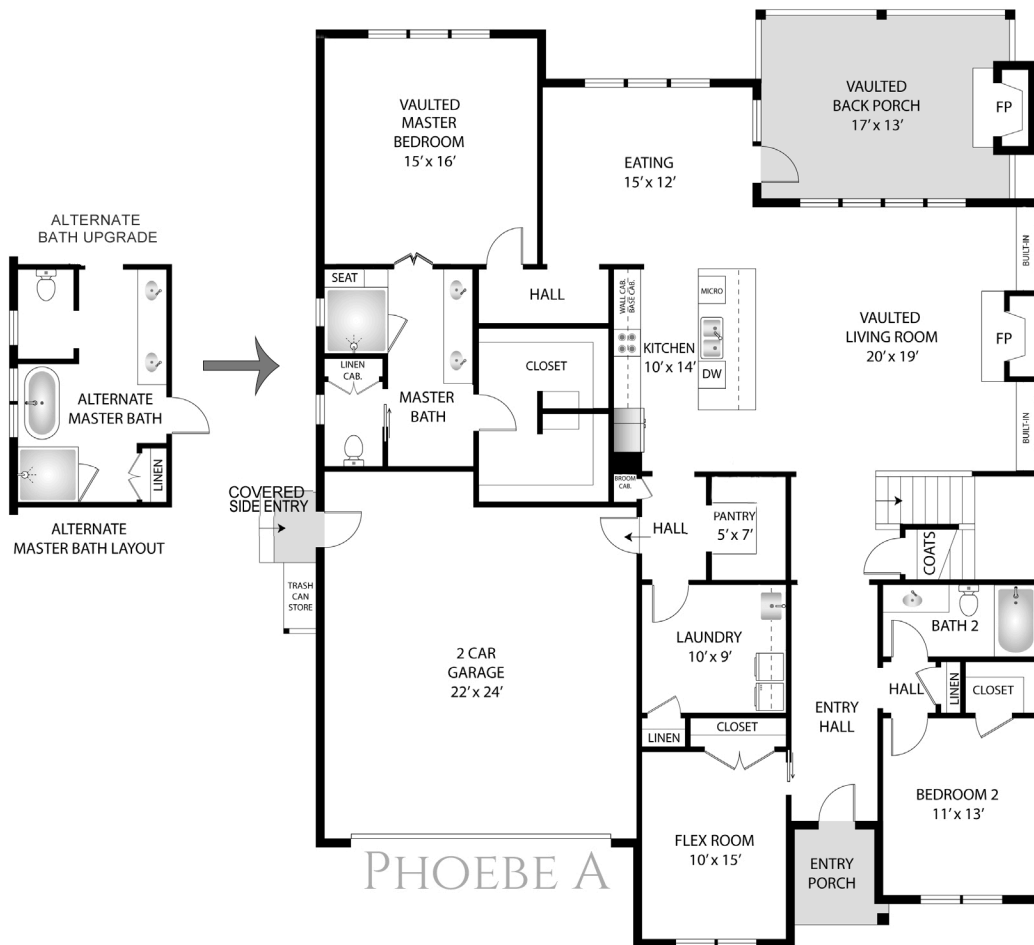
Jessica@ListWithEvergreen.com

TheCottagesAtLakeRedwine.com

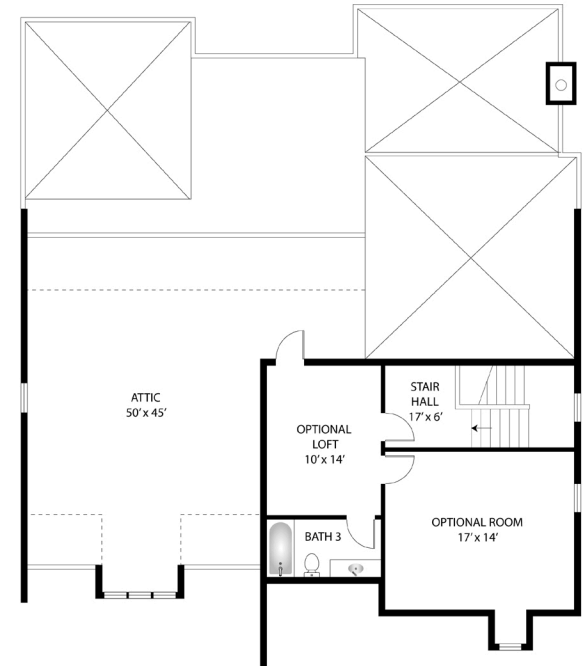


EVERGREEN

MAIN FLOOR - A



UPPER FLOOR OPTIONAL UPGRADE



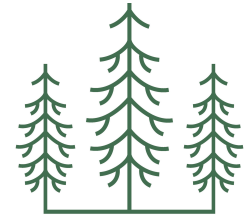
PROUDLY BUILT BY
Galen Slichty

Jessica Mottola

770-376-7778

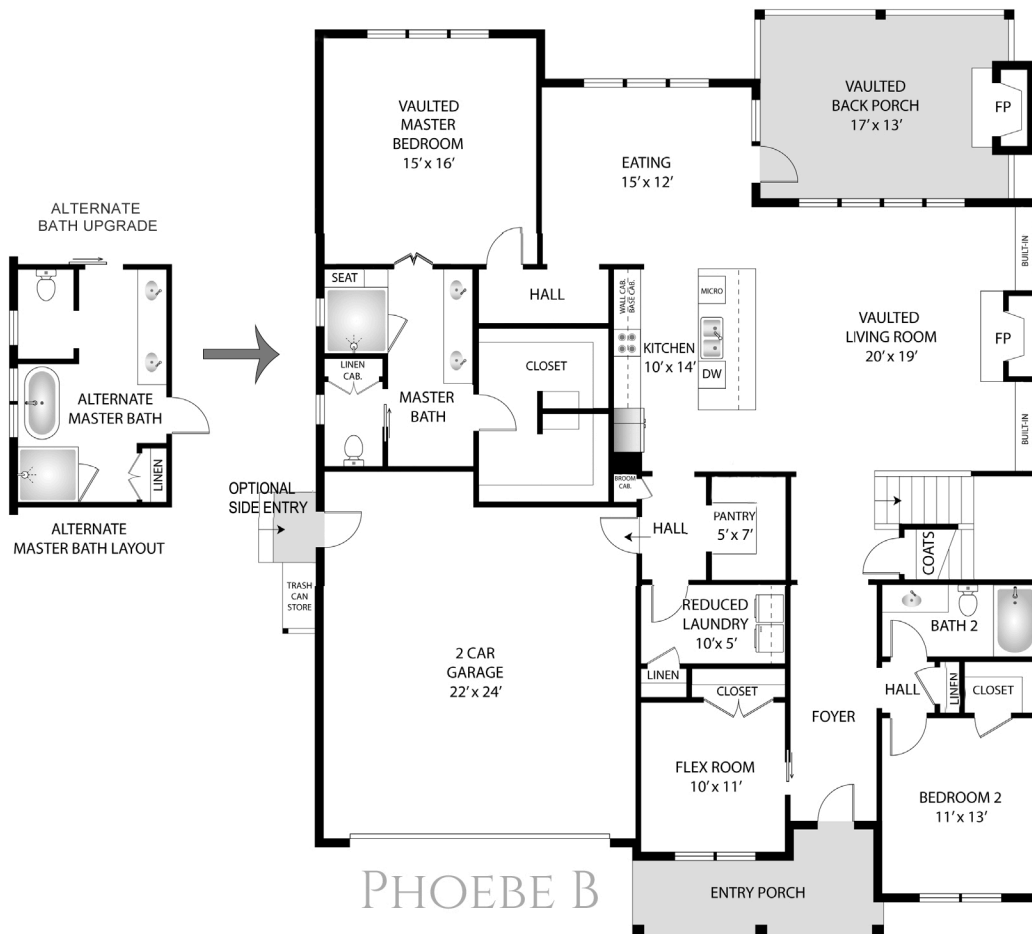
Jessica@ListWithEvergreen.com

TheCottagesAtLakeRedwine.com



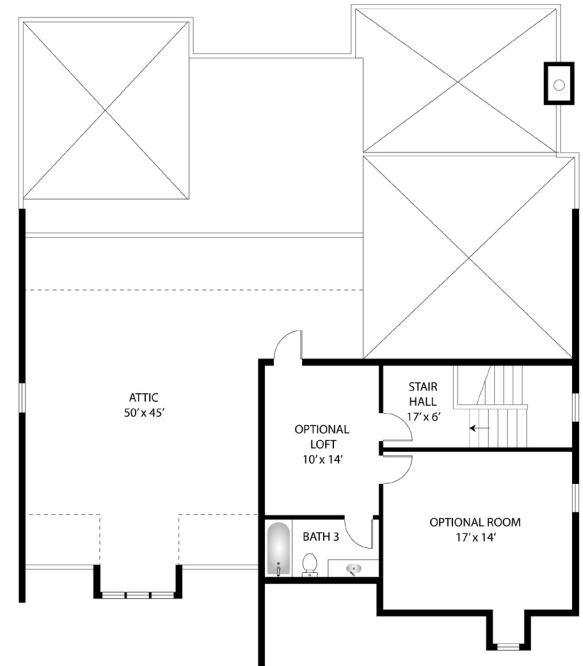
EVERGREEN

MAIN FLOOR - B



UPPER FLOOR

OPTIONAL UPGRADE



PROUDLY BUILT BY
Galen Lichty