

The Cottages

AT LAKE REDWINE



JESSICA MOTTOLA
DIRECT: 770-376-7778
jmottola@lanternrealestategroup.com
TheCottagesAtLakeRedwine.com

STANDARD FEATURES

EXTERIOR

- Solid wood front entry door
- Stone front porch floor
- Fiber cement siding and accents
- Architectural shingles
- Covered back porch with stone surround fireplace and vaulted beadboard ceiling
- Sodded front, back, and sides
- Insulated auto garage door with 2 remotes
- Covered pedestrian door from garage to side yard
- Pella double pane windows - grids between glass
- Seamless 6" gutters with 4" downspouts

SYSTEMS AND MECHANICAL

- 15 SEER HVAC heat pump
- Spray foam insulation in roof line
- Wireless security - exterior doors and panel
- Electric car charger in garage
- Irrigation system in all sodded areas

DESIGN ELEMENTS

- Stepless ranch with optional second level spaces finished
- Open concept kitchen, eating, and living room
- Abundant windows for natural light in all rooms
- Built ins next to living room fireplace
- Pocket doors per plan
- Lever interior door handles
- Curbless shower entry
- Oversized primary closet and laundry rooms
- Walk-in pantry with 12" and 24" shelf depths
- Gameday back porch with wood burning or gas fireplace

INTERIOR

- 5" site finished engineered white oak wood or LVP throughout main
- Tile or LVP bath and laundry floors
- Vaulted living room with wood beams
- Main floor flat ceilings 9', upper 8'
- 5" cove crown in foyer, flex, and dining
- 1"x 6" base 1"x 4" casings
- Wood shelving in pantry and all closets
- 42" custom inset cabinets with soft close features
- Quartz counter tops throughout
- Tile kitchen backsplash
- Under cabinet lighting
- Wood hood with exterior ventilation
- Direct vent fireplace with tile surround and custom wood mantle
- Whirlpool stainless appliances with gas range, microwave, dishwasher, and vent hood
- Vaulted primary bedroom
- Zero entry tile shower and frameless glass enclosure in primary bath
- Handheld shower head, tile bench, and shampoo niche in primary
- Steel tub with tile surround and shampoo niche in secondary baths
- Black metal stair pickets and wood handrails and posts

COMMUNITY

- Age restricted 55+ Active Adult Community
 - Steps from amenities including pool, clubhouse, lighted tennis & pickleball courts, playground, and 300 acre lake
 - Curated exterior color palettes for aesthetic continuity
 - Community mailbox
 - Weekly lawn maintenance included in association dues
 - Sidewalks and street lights on both sides of the street
 - Touch-free trash service included in association dues
 - Coweta County public sewer
-



SERENBE

CHATTAHOOCHEE HILLS

PALMETTO

HARTSFIELD JACKSON AIRPORT

B.T. BROWN RESEVOIR

DUNAWAY GARDENS

The Cottages
AT LAKE REDWINE

COWETA CLUB

CANNONGATE GOLF CLUB

TYRONE

NEWNAN COUNTRY CLUB

MORE SHOPPING & RESTAURANTS

PEACHTREE CITY

SOCIAL SECURITY OFFICE

MORE SHOPPING & RESTAURANTS

WHITE OAK GOLF CLUB

HISTORIC DOWNTOWN NEWNAN

ASHLEY PARK

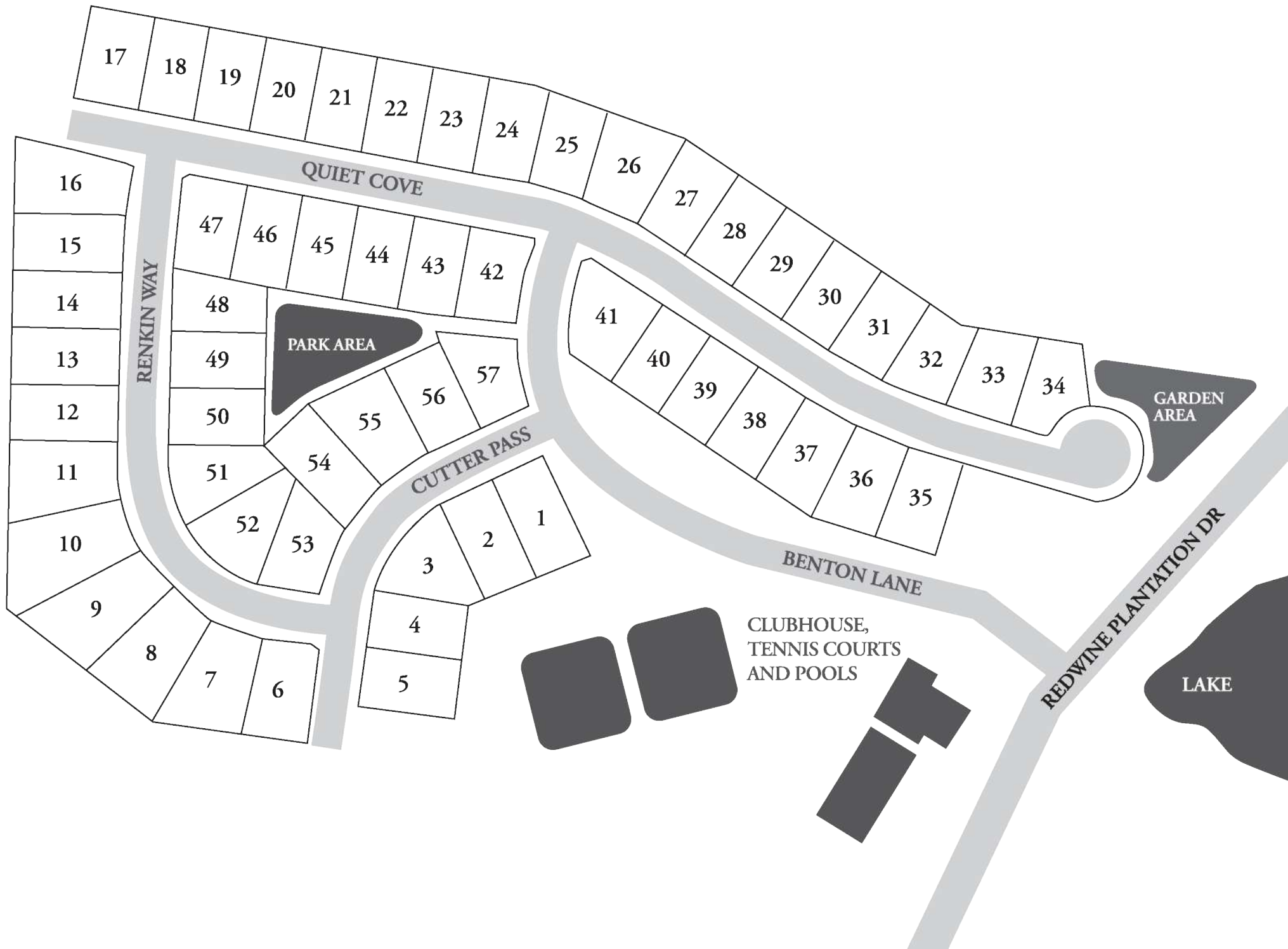
THE LINC TRAIL

DONALD M. NIXON CENTRE

SHARPSBURG

PIEDMONT NEWNAN HOSPITAL

SUMMER GROVE GOLF CLUB



The Cottages

AT LAKE REDWINE

WREN

ELEVATION A



MAIN FLOOR - 2,118 SQ FT | 3 BEDROOMS | 2.5 BATHS OR 3 BATHS

Expanded with Upper Floor - 2,872 SQ FT | 4 BEDROOMS | 4 BATHS

This home features a large front porch and a covered back porch with vaulted ceilings and fireplace. Bright and spacious kitchen with large island and a walk in pantry is open to the dining area and the family room which has vaulted ceilings with wood beams, fireplace, and built ins. Private primary suite located on the back of the home features a spacious vaulted bedroom, spa bathroom with an oversized zero-entry tile shower with frameless enclosure, a generous walk in closet, and easy access to the large laundry room. Secondary bedrooms are thoughtfully distanced from the primary suite and perfectly situated for a guest room and an office. Wood tread staircase leads to the upper level that can be finished as an expanded option adding 754 sq ft of bedroom, bathroom, and living area.

The Cottages

AT LAKE REDWINE

WREN

ELEVATION B



MAIN FLOOR - 2,118 SQ FT | 3 BEDROOMS | 2.5 BATHS OR 3 BATHS

Expanded with Upper Floor - 2,872 SQ FT | 4 BEDROOMS | 4 BATHS

This home features a large front porch and a covered back porch with vaulted ceilings and fireplace. Bright and spacious kitchen with large island and a walk in pantry is open to the dining area and the family room which has vaulted ceilings with wood beams, fireplace, and built ins. Private primary suite located on the back of the home features a spacious vaulted bedroom, spa bathroom with an oversized zero-entry tile shower with frameless enclosure, a generous walk in closet, and easy access to the large laundry room. Secondary bedrooms are thoughtfully distanced from the primary suite and perfectly situated for a guest room and an office. Wood tread staircase leads to the upper level that can be finished as an expanded option adding 754 sq ft of bedroom, bathroom, and living area.

The Cottages

AT LAKE REDWINE

STARLING

ELEVATION A



MAIN FLOOR - 2,201 SQ FT | 3 BEDROOMS | 2.5 BATHS OR 3.5 BATHS

Expanded with Upper Floor - 2,882 SQ FT | 4 BEDROOMS | 4.5 BATHS

This home features a covered front entry and a covered back porch with vaulted ceilings and fireplace. Light filled kitchen centers around a huge island and features a walk in pantry. The kitchen is open to the dining area and the family room which has vaulted ceilings with wood beams, fireplace, and built-ins. Private primary suite located on the back of the home features a large vaulted bedroom, spa bathroom with an oversized zero-entry tile shower with frameless enclosure, a huge walk in closet, and easy access to the large laundry room. Secondary bedrooms are thoughtfully distanced from the primary suite and perfectly situated for a guest room and an office. Wood tread staircase leads to the upper level which can be finished as an upgrade option which adds 681 sq ft of bedroom, bathroom, and living area.

The Cottages

AT LAKE REDWINE

STARLING

ELEVATION B



MAIN FLOOR - 2,201 SQ FT | 3 BEDROOMS | 2.5 BATHS OR 3.5 BATHS

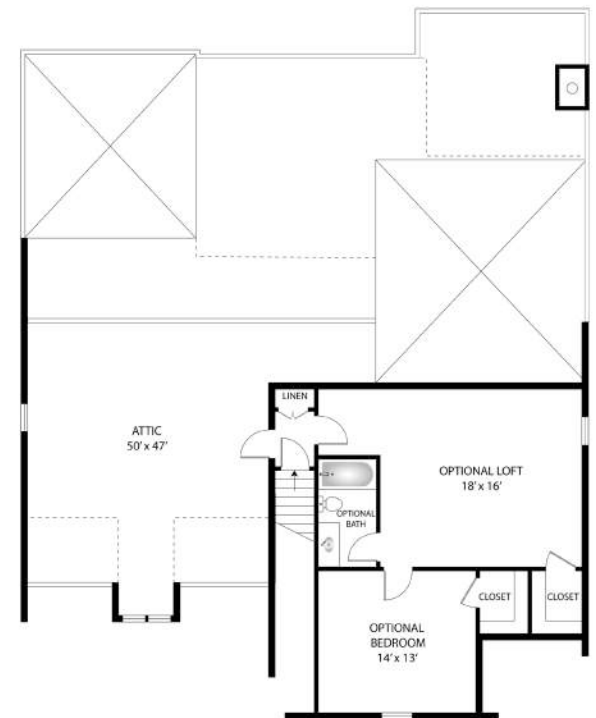
Expanded with Upper Floor - 2,882 SQ FT | 4 BEDROOMS | 4.5 BATHS

This home features a covered front entry and a covered back porch with vaulted ceilings and fireplace. Light filled kitchen centers around a huge island and features a walk in pantry. The kitchen is open to the dining area and the family room which has vaulted ceilings with wood beams, fireplace, and built-ins. Private primary suite located on the back of the home features a large vaulted bedroom, spa bathroom with an oversized zero-entry tile shower with frameless enclosure, a huge walk in closet, and easy access to the large laundry room. Secondary bedrooms are thoughtfully distanced from the primary suite and perfectly situated for a guest room and an office. Wood tread staircase leads to the upper level which can be finished as an upgrade option which adds 681 sq ft of bedroom, bathroom, and living area.

MAIN FLOOR



UPPER FLOOR OPTIONAL UPGRADE



The Cottages

AT LAKE REDWINE

PHOEBE

ELEVATION A

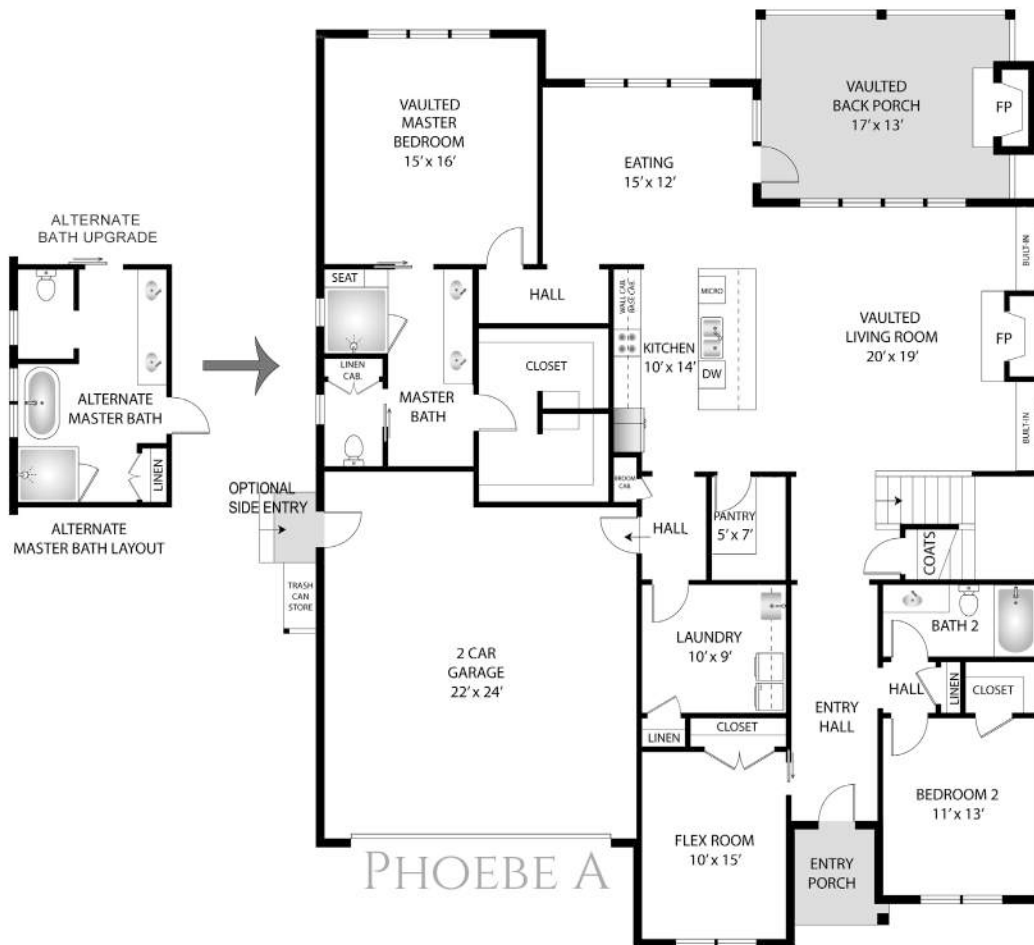


MAIN FLOOR - 2,120 SQ FT | 3 BEDROOMS | 2 BATHS

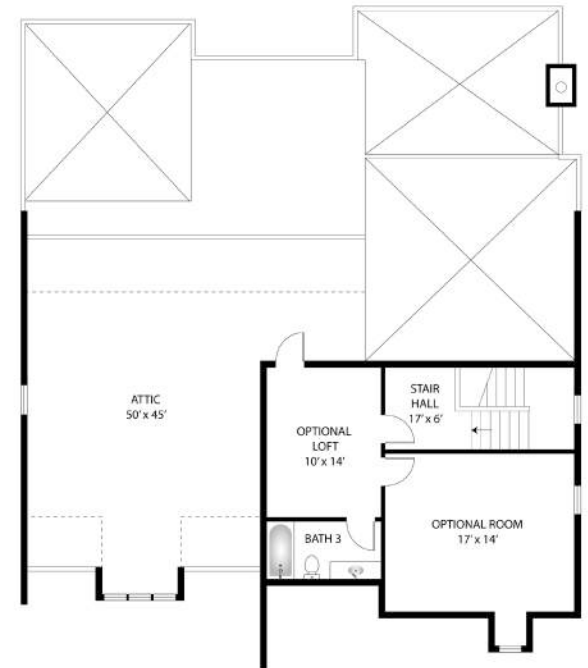
Expanded with Upper Floor - 2,664 SQ FT | 4 BEDROOMS | 3 BATHS

This home features a recessed covered entry and the largest covered back porch of the plans. The back porch has vaulted ceilings and a wood burning fireplace. The interior features a gallery entry hall that leads to the open living space. The kitchen features a huge walk in pantry, large center island, and a wide-open view of the vaulted family room with wood beams, fireplace, and built-ins. The primary suite sits privately at the rear of the plan with a large vaulted bedroom, spa bathroom with an oversized zero-entry tile shower with frameless enclosure, and a huge walk in closet. Secondary bedrooms are situated on either side of the entry hall. Wood tread staircase leads to the optional upper level which adds 544 sq ft of additional living space, bedroom, and bathroom.

MAIN FLOOR - A



UPPER FLOOR OPTIONAL UPGRADE



The Cottages

AT LAKE REDWINE

PHOEBE

ELEVATION B



MAIN FLOOR - 2,060SQ FT | 3 BEDROOMS | 2 BATHS

Expanded with Upper Floor - 2,604SQ FT | 4 BEDROOMS | 3 BATHS

Have your cake and eat it on the front porch or the back. The Phoebe 2 adds a rocking chair front porch by adjusting the flex and laundry rooms without sacrificing the enormous back porch. The back porch has vaulted ceilings and a wood burning fireplace. The interior features a gallery entry hall that leads to the open living space. The kitchen features a huge walk in pantry, large center island, and a wide-open view of the vaulted family room with wood beams, fireplace, and built-ins. The primary suite sits privately at the rear of the plan with a large vaulted bedroom, spa bathroom with an oversized zero-entry tile shower with frameless enclosure, and a huge walk in closet. Secondary bedrooms are situated on either side of the entry hall. Wood tread staircase leads to the optional upper level which adds 544 sq ft of additional living space, bedroom, and bathroom.

MAIN FLOOR - B



UPPER FLOOR OPTIONAL UPGRADE

