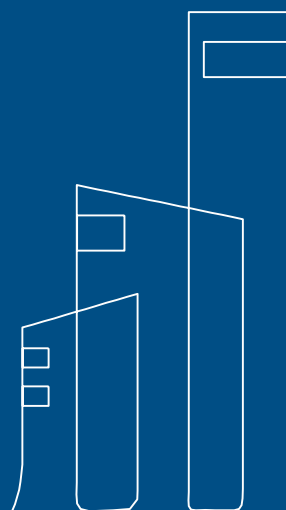




📍 301, Krishnayan, 215 Indrapuri  
Bhanwarkua, Indore 452001 (M.P.) INDIA  
☎ +91 9713795709 ✉ [garudfiresecurity@gmail.com](mailto:garudfiresecurity@gmail.com)  
🌐 [www.garudfire.com](http://www.garudfire.com)

We bring buildings to life - every day,  
all year round.



## Contents

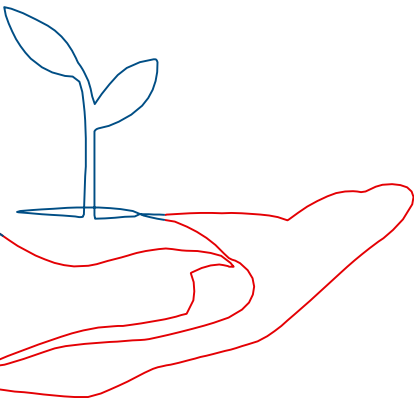
---

- I. Summary of company profile
- II. Area of Expertise
- III. Top Project highlights
- IV. Repeated client list
- V. Project list
- VI. Organization chart
- VII. Key personnel's
- VIII. Credentials
- IX. Quality Manual

## Who is Garud fire and security?

Established in 2011, Garud Fire and Security has nearly a decade of dedicated service in the electro-mechanical industry. With key offices located in Indore, Raipur, and Jabalpur, we boast strong independent finances, an excellent credit rating, and a loyal repeat client base.

In Indore, Garud Fire and Security was founded with a primary focus on MEP services for fast-track projects. Over the years, we have established ourselves as a reliable and trusted partner, delivering high-quality solutions tailored to meet the specific needs of our clients. Our commitment to excellence and customer satisfaction has been the cornerstone of our success, driving us to continually raise the bar in the electro-mechanical industry.



## What does Garud fire and security?

With our unwavering attention to detail and a steadfast commitment to perfection, we have consistently delivered projects ranging from 500,000 to 250,000,000 in value. Our portfolio of executed jobs encompasses a diverse range of sectors including commercial buildings, hotels, residential high-rises, super-specialty hospitals, logistics parks, modern warehouses, institutional campuses, as well as small and medium industries.

As specialists in the MEP domain, our philosophy revolves around three fundamental yet powerful tenets: Competence, Dedication, and Trust. By embodying these principles, we have consistently surpassed our customers' expectations, striving for greater efficiency and effectiveness with each project.

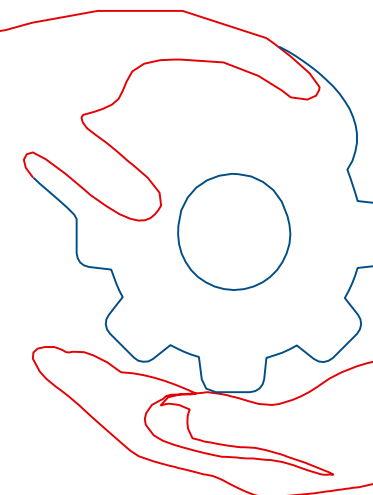
We take immense pride in the evolution of our services, acknowledging that our achievements would not have been possible without listening to our clients, collaborating with the best talents, and operating as an integrated team with a shared vision and common purpose. Our commitment to delivering innovative, consistently high-quality services on time and within budget remains unwavering.

## Area of Expertise

### Range of MEP Systems & Services -

Garud Fire and Security excels in providing a comprehensive range of MEP (Mechanical, Electrical, and Plumbing) installations. Our company specializes in tailoring solutions to meet the specific requirements of our clients. Each solution is meticulously selected to ensure that the end result aligns perfectly with the client's needs, statutory requirements, and environmental considerations, while also maximizing resource efficiency.

Over the years, Garud Fire and Security has successfully executed numerous projects across diverse sectors. We cater to a wide array of MEP jobs, ranging from fast-track MEP fit-outs to complete execution and build jobs for medium to large-sized projects. Our expertise and dedication enable us to deliver high-quality solutions that meet and exceed our clients' expectations, regardless of project complexity or scale.



## Services Offered

Supply, Installation, Testing & Commissioning -



### Fire Fighting and Alarm System

- Fire hydrant protection system
- Fire sprinkler protection system
  - a) Dry pipe & wet pipe fire sprinkler system
  - b) Pre-action fire sprinkler system
  - c) In-rack sprinkler system
- Deluge system
  - a) MV (Medium velocity) system
  - b) HV (High Velocity) system
- Foam based system
- Fire Alarm system design
- Fire Alarm system supply, installation, commissioning & testing
- Fire pump and supervisory signals



### Electrical Systems

- Low voltage
- Medium voltage
- Busbar riser
- Installation
- LT & HT services



### HVAC

- DX system
- Chilled water
- VRF system



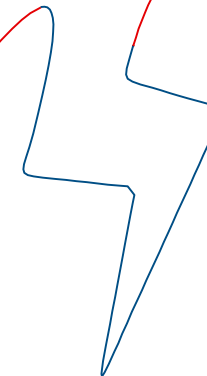
### Plumbing system

- Plumbing pumping system
- WTP system
- R.O. Plant
- HTP / ETP system
- External Development (Stormwater disposal, sewerage networking, water supply, irrigation supply).



### Building Management / Automation service

- Integration of leading BMS components as per site requirement.



## Top project highlights

### H & H healthcare Pithampur Indore (5 Star Rating)

Location : **Indore**

Area : **22.35acre**

H H&H Healthcare and Cosmetics Pvt. Ltd., a prominent B2B partner in manufacturing pharmaceutical formulations, nutraceutical products, herbal dosage forms, cosmetics, and disposable syringes & needles, is headquartered in Indore, Madhya Pradesh. Renowned for our commitment to manufacturing excellence, innovation, quality, and safety, we have established ourselves as an industry leader in our field. Our dedication to providing top-tier products underscores our mission to serve our clients and customers with the highest standards of quality and reliability.





## Avinash One Raipur

Location: **Raipur** | Area: **25Lakh SQFT**  
Building Size: **Commercial with Residential 25 floors.**

Avinash One's spacious 3 bkh & 4 bkh near Magneto Mall Raipur provides the perfect residential option that has a plush neighborhood and tranquillity-filled surroundings, this project. Avinash One, with its unique mixed development attribute, is the ideal estate buying option in Raipur you must surely look into.



## ITC (ARV) Hotel

Location: **Jabalpur** | Area: **8.8 Lakh SQFT**  
Building Size: **One common basement and Ground + 15 floor.**

With over 115 hotels in 80 destinations across six distinct brands, ITC's hotel group integrates India's renowned tradition of hospitality and warmth, with globally benchmarked facilities & services.





## Motherhood Hospital

Location : **Indore** | Area : **70000Sq.ft.**

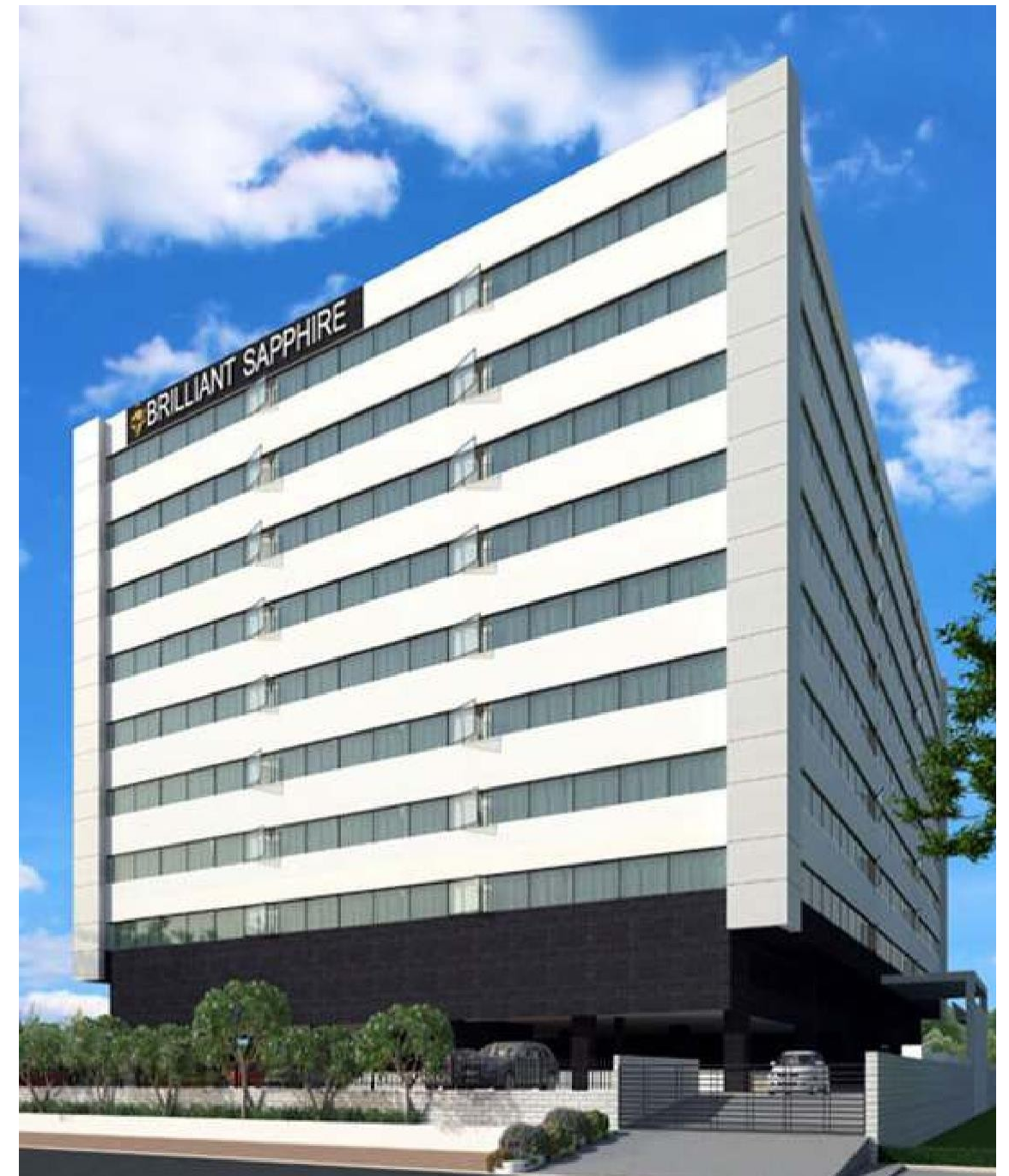
Motherhood hospital, Indore is one of the leading MNC Hospital chain in India, we have successfully completed MEP Services works, which include Electrical, fire Fighting and HVAC work.



## Brilliant Sapphire

Location : **Indore** | Area : **6.34LacSq.ft.**

We have completed MEP work of G+11(6.34lakh sq.ft.construction) commercial IT building project of Brilliant Group Indore M.P.





## Life Care Logistic Park

Location : **Indore & Goa** | Area : **70acre**

Life Care Logistics has established itself as a major player in the logistics park industry, particularly in central India. Completing multiple projects, including those in prominent locations like Indore and Goa, speaks volumes about your expertise and capabilities. Offering comprehensive MEP (Mechanical, Electrical, Plumbing) services, including installation, demonstrates your commitment to providing turnkey solutions to clients.



## Currency Tower

Location : **Raipur** | Area : **5.36LacSq.ft.**

The Lal Ganga Group's "Currency Tower" project at VIP Square in Raipur sounds like an ambitious commercial endeavor. Offering MEP (Mechanical, Electrical, and Plumbing) services, including fire fighting and low voltage (LV) systems, highlights a commitment to ensuring safety, efficiency, and functionality within the building.





## Aditya Birla Group

Location: **Indore** | Area: **5.98SQFT**

Our first project with this group “MORE MEGA STORE” we have completed the Firefighting & Electrical system for this project.



## The Park Hotel

Location: **Indore** | Area: **7.32lakhSQFT**

The Park Hotels is indeed an esteemed collection of contemporary luxury five-star boutique hotels in India. Owned by the Apeejay Surrendra Group, with its headquarters in Kolkata, West Bengal, these hotels are renowned for their elegant design, impeccable service, and modern amenities.





## Birla Cement Ltd.

Location: **Satna** | Area: **More than 200 acre Campus**

Completing the complete fire fighting work at the Birla Cement plant in Satna demonstrates a commitment to safety and preparedness. It's essential to prioritize fire safety in industrial settings, especially in facilities like cement plants where the risk of fire can be high. This accomplishment reflects positively on the professionalism and expertise of the team involved.



## Asian Paint Ltd.

Location: **Jabalpur & Jaipur.** | Area: **80,000sq.ft. & 15,000sq.ft.**

Being a registered vendor for a major industry player like Asian Paints and successfully completing MEP services work across India showcases the trust and confidence they have in Garud Fire and Security's capabilities. MEP services are crucial for the smooth functioning and safety of any infrastructure, and your successful completion of electrical, fire fighting, and plumbing services underscores your professionalism and expertise in these areas.





## Unity Logistic Park

Location: **Jabalpur** | Area: **32acre**

Building Size : **Warehouse**

The only and biggest Logistic park in the city, Unity logistic park have prestigious client like flipkart, Amazon, Safe Express, catter pilar, Hindustan Unilever Ltd., Here We have successfully completed - Complete MEP services work , which include Electrical, fire Fighting, plumbing and plumbing work.



## Sky Luxuria

Location : **Indore** | Area : **14.24acre**

Building Size : **One common basement and Ground + 15 floor.**

Completing the electrical and fire fighting work for such a large and luxurious high-rise residential project in Indore must have been quite a feat. Ensuring the safety and functionality of such a complex building is crucial, and your successful completion speaks volumes about your team's expertise and dedication. It must be satisfying to see your hard work come to fruition in such a significant project.





## The Arindam hotel

Location: **Katani** | Area: **10.24acre**

Building Size: **One common basement and Ground + 5 floors.**

The Arindam is a first-of-its-kind experience in Katni . It comprises of Hotels, a Club and Banquets. In terms of grandness and services, it is second-to-none in its category anywhere. The Arindam delightfully surprises. Along with the large scale services, the little things are also taken care of.



## Ashoka Raj Hotel

Location : **Indore** | Area : **14.24acre**

Building Size : **Merrage Hall + Ground + 8 floor.**

Ashok raj Resort is a source of enigma. The surreal beauty, pearl color make you get lost to the feeling of wedding, cherishing for 2 souls which are going to unite in this birth. The medieval customs of doing pheras under well crafter mandaps, magnificent setup and a perfect Rome like landmark set in the city.





# Hilton Hotels & Resorts

Location:**Jabalpur** | Area:**32acre**  
Building Size :**3 basements + Ground +15floors.**

Hilton Hotels & Resorts is a global brand of full-service hotels and resorts and the flagship brand of the American multinational hospitality company Hilton. It offers unforgettable experiences at iconic destinations around the world. Their fire-fighting work is exemplary.



# Elegance

Location :**Raipur** | Area :**14.24acre**  
Building Size : **One common basement and Ground +15 floor.**

Living it large is what this lifestyle is all about. A once-in-a-lifetime opportunity that brings space alive. Spread over a sprawling 2 acres, it has 3 vastu-compliant towers of 7 floors each, accommodating a total of 78 majestic apartments and 6 sky villas open on all 3 sides. These are set in between undulating, landscaped greenery to make it your personal paradise. It is your ticket to the next chapter of your life!





## MALL - 11 Jabalpur

Location: **Indore** | Area: **32acre**

Building Size :

MALL 11 Jabalpur is a premier shopping destination, offering a wide array of retail, dining, and entertainment options. It provides unforgettable experiences for visitors from around the world. Their fire-fighting work is exemplary, ensuring safety and peace of mind for all patrons.



## SAM Industries Shivay One

Location: **Indore** | Area: **45000Sqft**

Building Size: **basement + Ground + 2 floor.**

Shivay One Indore is a premier destination, offering a unique blend of luxury and convenience. Spread over a sprawling area, it provides top-notch facilities and an unforgettable experience for its visitors.





## Flipkart Warehouse Dakachiya

Location: **Indore** | Area:**32acre**  
Building Size: Approx **3800 Sprinkler With More than 80 Hydrants**

Flipkart, a prominent client, leverages its position as one of India's leading e-commerce platforms to offer an extensive array of products to its customers. Known for its customer-centric approach, Flipkart prioritizes safety and quality in all its operations, including exemplary fire-fighting measures to ensure the well-being of its employees and customers.



## Delhivery Warehouse Dakachiya

Location:**Indore** | Area:**14.24acre**  
Building Size : **1800 Sprinkler With More than 50 Hydrants**

Delhivery is one of India's leading logistics and supply chain companies, known for its extensive network and efficient services. A Delhivery warehouse would likely be a large-scale facility strategically located to serve as a hub for storing, sorting, and distributing goods across various regions.





## GMS Mall

Location : **Satna** | Area : **3Lacsq.ft.**

Building Size : **1 Basement, Ground + 4 Floors with 3 Screen PVR Cinema.**

GMS Mall stands out as the only mall in the city with a three-screen PVR Cinema, offering an exceptional entertainment experience to its visitors. We are proud to have provided comprehensive MEP (Mechanical, Electrical, and Plumbing) services for the mall, covering electrical, fire fighting, and HVAC (Heating, Ventilation, and Air Conditioning) work.



## VIBGYOR School

Location : **Indore** | Area : **4.2acre**

Building Size : **One basement with ground plus 10 floors.**

One of the biggest school in Indore. we have successfully completed Fire Fighting System and chiller system Installation Work In school building.





## Our Completed Projects

- **Smart City Cultural Auditorium**  
Project (3.25 lakh sq.ft. construction) at Jabalpur, M.P.
- **Smart City Sport Stadium and Complex**  
(8.35 sq.ft. lakh Construction) at Jabalpur, M.P.
- **Mittal Enclave Mall**  
(1.25 Lakh sq.ft. Construction) at Katni, MP.
- **Royal Orbit Hotel**  
(2.45 lakh sq.ft. Construction) at Jabalpur, M.P.
- **The Park hotels**  
(1.24 lakh construction) at Indore, MP.
- **Manglam Tower**  
Commercial (80,000 sq.ft.) building at Jabalpur, MP.
- **Hotel Shivlok International**  
(93000 sq.ft.) at Satna, MP.
- **Trillion Warehouse**  
(2.4lakhsqft) at Raipur, CG.
- **Motherhood Hospital**  
(7000sqft) at Indore, MP
- **Prithvi Hotel**  
Commercial (90,000 sq.ft.) building at Durg, CG.
- **Ashok RAJ Hotels**  
(7.25 Lakh sq.ft. Construction) at Indore, MP.
- **H&H Healthcare & Cosmetics Pvt Ltd**  
(80000 sq.Mtr.) at Pithampur, M.P.
- **Pantaloons**  
(25000 sq.ft. Construction) at Jabalpur, M.P.

- **Country IN Hotels**  
(basement, Ground plus 6) at Indore, M.P.
- **Tulsi Tower**  
Commercial Building (Ground plus 4) at Indore, M.P.
- **Logistic Park**  
Project (7.1 lakh sq.ft. construction) at Indore
- **Vibrant Tower**  
Commercial (basement, ground +6)  
and Residential building at Indore, M.P.
- **Brilliant Platina**  
Commercial building (Ground + 8) at Indore, M.P.
- **Shiv Om**  
Commercial building (Ground + 6) at Indore, M.P.
- **Advance Academy School**  
(Ground + 2) at Indore, M.P.
- **Giriraj Heritage**  
Commercial and residential  
(Basement, Ground+6) Building at Ujjain, M.P.
- **Pentaloon Shopping Centre** at Ujjain, M.P.
- **Hotel Ramashray Paradise** at Dewas, M.P.
- **Rabs Buildicon**  
Commercial and Residential  
(2 basement, Ground + 10) Building at Jabalpur, M.P.
- **Rewa Pride**  
Residential building  
(basement , Ground + 10) at Jabalpur, M.P.
- **Birla Hospital**  
(Ground + 3) at Satna, MP.

- **Venus Mall**  
project(basement, Ground + 6) at Satna, MP.
- **Capetown High-rise**  
Residential Building (Ground + 10) at Satna, MP.
- **Krishna Raj Kapoor Auditorium** at Rewa, MP.
- **Rewa Hospital and Reserch Centre**  
(basement, Ground + 2) at Rewa, MP.
- **Vindhya Hospital**  
(Basement + Ground + 4) at Rewa, MP.
- **Safe Space**  
warehousing Logistic Hub at Indore, M.P.
- **Jabalpur Trade Centre**  
(Basement, Ground + 3) at Jabalpur, M.P.
- **Vishal Mega Mart**  
(Basement, Ground + 4) at Raipur, C.G.
- **Pathak Multi Super Specialty Hospital**  
(basement, Ground+4) at Satna, MP.
- **PVR Multiplex** at Manendragarh, C.G.
- **Uma Resort and Hotels** at Satna, MP.
- **Gems Public School** at Indore, M.P.
- **Mountra Litra Zee School** at Satna, MP.
- **Jainam Shri Hospitals** at Bhopal, M.P.



## Ongoing Projects

- **SRT Hotels Raipur**  
Project at Raipur, C.G.
- **Mall - 11**  
Project (10 sq.ft. lakh construction) at Jabalpur, M.P.
- **Infinity Hospital**  
Project at Jabalpur, M.P.
- **UNITY LOGISTIC Warehouse**  
Project at Jabalpur, M.P.
- **SAM Industries Shivay One**  
Project (1acrconstruction) at Indore, M.P.
- **P-4**  
Project (Basement + Ground + 7) at Jabalpur, M.P.
- **Chitavan\_Kachna Road**  
Project at Raipur
- **Trilok Farma**  
Project (4.25 lakh sq.ft. construction) at Jabalpur, M.P.
- **Black Rock Hotel**  
Indore,MP
- **Sandy Hotel & Resort \_Shirdi**  
Commercial Project (Farji Café) (5.80 lakh sq.ft. construction) at Shirdi, MH
- **Life Care Ware House \_Ahmedabad**  
(4.12 lakh construction) at Ahmedabad, Gujrat
- **S Raj Mall**  
Commercial (98,000 sq.ft.) building at Burhar, M.P.
- **Avinash One**  
(8.9 lakh sq.ft.) at Raipur, M.P.