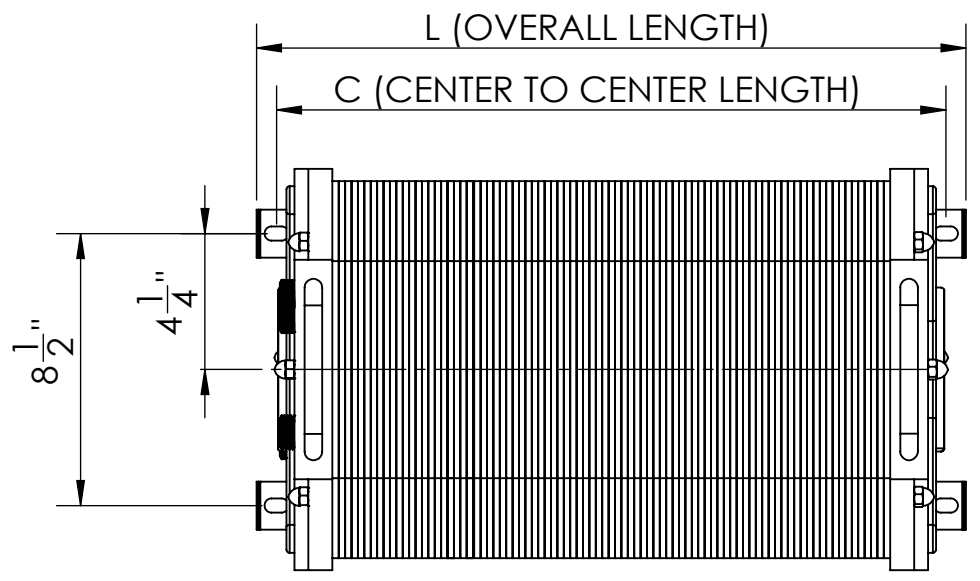
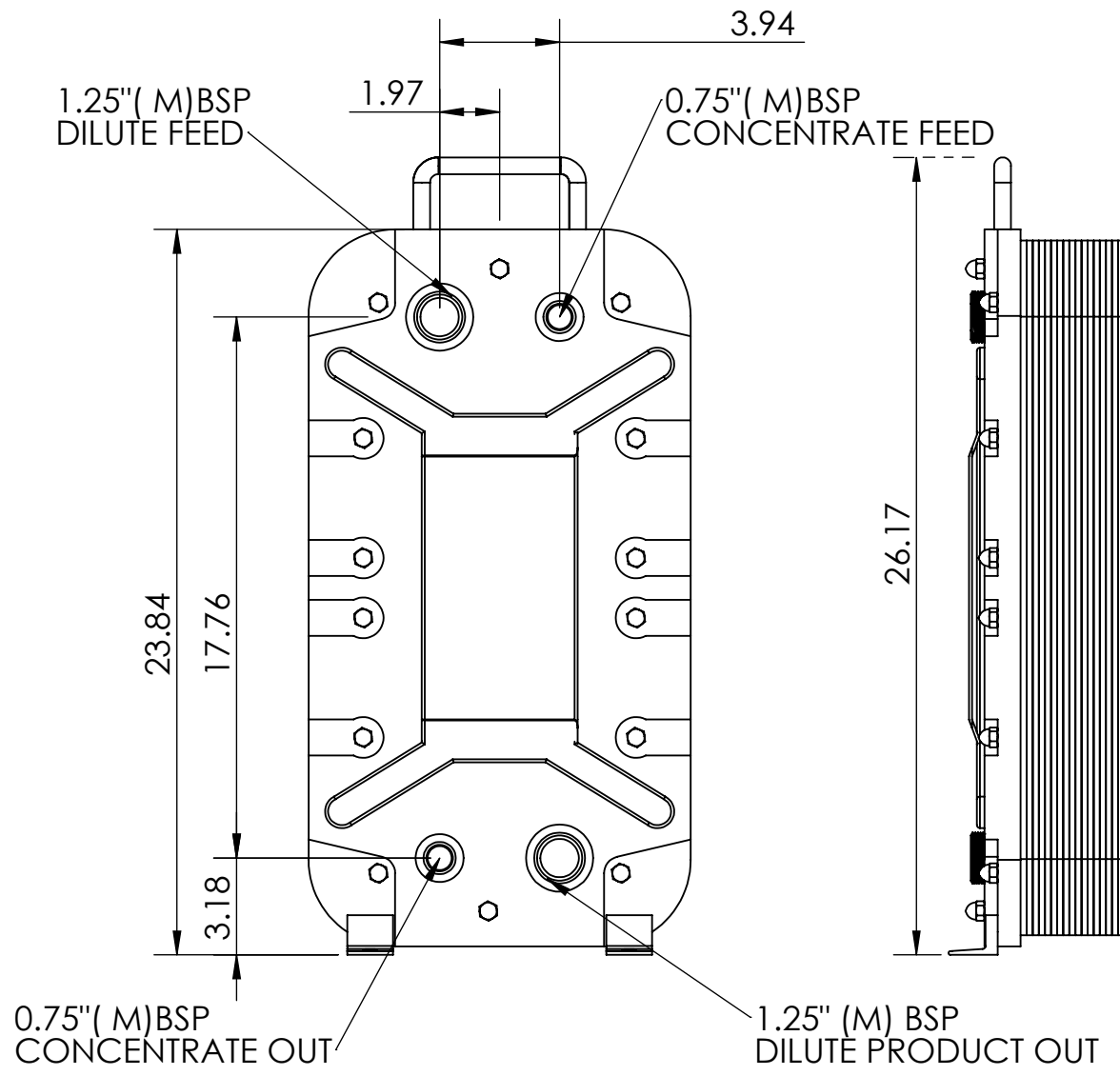


REMOVEABLE
HANDLE



PART NUMBER	"C"	"L"
IT-DS-05S	5.79"	7.05"
IT-DS-10S	9.29"	10.56"
IT-DS-20S	13.24"	15.20"
IT-DS-24S	17.43"	18.69"
IT-DS-30S	20.91"	22.17"
IT-DS-50S	29.37"	30.63"



THIS DOCUMENT AND THE INFORMATION DISCLOSED HEREIN IS THE PROPERTY OF IONTECH WATER TECHNOLOGIES, INC. AND NEITHER THIS DOCUMENT NOR THE INFORMATION DISCLOSED SHALL BE REPRODUCED OR TRANSFERRED TO OTHER DOCUMENTS OR USED OR DISCLOSED TO OTHERS FOR MANUFACTURING OR FOR ANY PURPOSE EXCEPT AS SPECIFICALLY AUTHORIZED IN WRITING BY IONTECH WATER TECHNOLOGIES, INC.

1	ISSUED FOR APPROVALS, NOT CERTIFIED	BY	5/31/19
REV.	DESCRIPTION	IN	DATE
UNLESS OTHERWISE SPECIFIED DIMENSIONS ARE IN INCHES. BILATERAL TOLERANCES ARE: .XX = .05" ANGLES = 0.5° FRACTIONS = 1/16"			

IONTECH WATER TECHNOLOGIES INC.
WWW.IONTECHWATER.COM

IONTECH EDI MODULE DIMENSIONS			
CLASS.	JOB FILE # IT-DS30		
SECTOR/BUILDING	FLR.	RM NO.	
DR	DATE	DWG NO. IT-DS30-##-01-##	REV. #
CH	MAR 2019		
APP	SCALE 1:12	SH 1 OF 1	