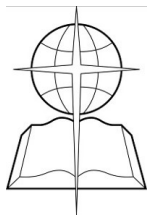


Ashe Baptist Association News



JANUARY
2025

OFFICE HOURS: 9:00 AM—4:00 PM Monday—Friday
Location: 204 Beaver Creek School Road West Jefferson, NC
Mailing Address: PO Box 850 Jefferson, NC 28640
Phone: 336-846-5631 **Website:** www.ashebaptist.org

Appalachian
Bald Mountain
Beaver Creek
Big Flatts
Big Laurel
Blue Ridge
Bristol
Buffalo
Calvary
Christian Unity
Farmers Memorial
Fletcher Memorial
Friendly Grove
Friendship
God's Will Missionary
Grassy Creek
Happy Trails Cowboy
Healing Springs
Laurel Knob
Liberty Grove
Little Helton
Midway
Mission Home
Mount Olive
New River
North Beaver
Oak Hill
Obids
Old Fields
Orion
Phoenix
Pilot Mountain
Pine Swamp
Pleasant Home
Pleasant Valley
Riverview
Round Knob
Trinity
Tuckerdale
Wagoner
Warrensville

Preacher David's Corner

Rev. David Blackburn, Director of Missions

Email: domdblackburn@gmail.com



Ashe County Children's Christmas Project: A Story of Generosity and Hope

The spirit of Christmas shone brightly in Ashe County this year, thanks to the incredible outpouring of generosity from local volunteers, organizations, and businesses. What began as a simple goal to ensure that 650 children in need would have gifts to open on Christmas morning, became a heartwarming testament to the power of community coming together.

It takes more than a few volunteers to pull off a project of this scale. It takes a village, and this village was made up of countless individuals and groups who donated their time, resources, and financial support to make sure that no child in Ashe County would be forgotten this Christmas. Local churches, individuals, businesses, industries, Ashe County Gideons, and government organizations stepped up in a big way to make this year's Ashe County Children's Christmas Project a success.

Among those who gave generously were the Backpack Program of the Stanly-Montgomery Association. The many volunteers provided a special touch making sure every child had an appropriate backpack full of supplies. Their contributions were integral to making sure that every child on the list had not just a gift but also the love and care that comes from a community looking out for one another. Every toy, clothing item, and game that was donated or purchased went to creating a moment of joy for a child who might otherwise have gone without.

A special mention must go to Mo's Boots in West Jefferson. This year, they opened the doors of the old Burgess Furniture Building for distribution. This provided a central location where volunteers could gather, organize, and distribute the gifts to families in need. Without their generosity and the use of this space, the project would have faced significant logistical challenges. Their kindness is a reminder of how businesses, large and small, play an important role in the fabric of a caring community.

In addition to the tangible gifts, there was an outpouring of love through prayers. This year, more than ever, the volunteers found themselves offering a listening ear and heartfelt prayers for those who needed it most. Many families, struggling with hardship, walked through the doors not just seeking a toy for their children, but also seeking hope and encouragement. There were tears and there were smiles, and through it all, prayers were offered for peace, strength, and joy in the days ahead.

As the volunteers worked tirelessly to move and sort gifts, a deep sense of gratitude was felt by everyone involved. The project was not just about the physical act of giving but was about the connections made, the encouragement offered, and the unity that was evident in every corner of the distribution process. The truth was clear. Together we are much stronger than working alone. The success of the Ashe County Children's Christmas Project was a direct result of the collective effort of everyone who gave, worked, and prayed.

Your Servant, David



Ashe Really Cares

336-846-5234

ashereallycares@gmail.com

Isaiah 9:6 For unto us a child is born, unto us a son is given: and the government shall be upon his shoulder: and his name shall be called Wonderful, Counsellor, The mighty God, The everlasting Father, The Prince of Peace.

We are in the season of thanksgiving, miracles, and promise. Thanksgiving and Christmas can be a time of great joy and family. For some, it is also a time of stress, loss, and struggle. Ashe Really Cares staff, volunteers, and donors have stepped up this year to bring as much holiday cheer as possible. We have been busy.

- 70 turkeys were donated to share with our neighbors for Thanksgiving and Christmas meals
- The holiday food drive brought in 1200 lbs of food such as stuffing and cranberry sauce
- Through our partnership with Ingles, the community purchased about 350 pre-packed \$5 bags of groceries
- Project Star sponsored 18 of our senior neighbors to receive Christmas gifts and heating assistance
- ARC partnered with multiple donors to shop for 18 children from 8 families. Providing gifts for the kids and grocery gift cards for the parents

November report

Food pantry- 141 households, 320 individuals, 12 new households, over 15,000lbs of food

Clothing pantry -159 households

Fuel assistance: \$3325 in electric vouchers to prevent disconnect, and \$2913 in fuel oil

Current pantry needs: 15oz mixed vegetables, 15oz canned sauerkraut

None of this would be possible without the support of the churches in our association and the community. God Bless.

God Bless,

Twila Miller

Director of Ashe Really Cares



January 12	A- Rev. & Mrs. Steve Allen
January 17	A-Rev. & Mrs. Keith Woodie
January 18	B- Mr. Nathan McLeese
January 20	B- Rev. Steve Ashley
January 23	B- Mrs. Hope Bare
January 24	B- Mrs. Ann Farmer
January 29	B- Mrs. Elaine Cox
January 31	B- Mrs. Samatha Phipps
January 31	B- Rev. Gene Shumaker

2025 Ashe Baptist Associational Calendars
Come pick yours up today!!!!

ATTENTION Ashe Baptist Associational Church Clerks & ACP Contacts - 024 ACP's are due January 31, 2025!
See Page 9 for info or call the office at 336-846-5631.



Ashe Baptist Association

would like to thank our sponsors
for the Ashe Baptist News heard on WKSK
each Saturday and on SoundCloud on the Web.

Randy Marion Ford West Jefferson
Randy Marion Chevrolet - West Jefferson
Josh Harrold, General Manager
Tri-County Paving
Lucian and Patricia Jordan
Tri County Monuments
Mike and Lisa Peters
State Wide Insurance
Chris and Andrea Finney.

We appreciate our sponsors & encourage you to call them when you need their services!

FaithHealth Connector Report

Have you ever thought of the wonder and miracle of waking up every morning to a brand new day? Creation offers and even demands that every 24 hours we wake up to a rising sun shining on a new day. God could have very well created us as He has created some other animals that can stay awake for months at a time with no sleep. Newborn dolphins don't sleep for a month after birth and stay alert with at least one eye open at all times. In general, all dolphins also engage in what's called unihemispheric sleeping, where half of their brain will stay awake all the time. They then switch which side is awake to make sure their entire brain rests. This technique helps them stay safe while resting and remain alert to predators such as sharks. Alpine swifts have incredible migration habits where they travel from Switzerland to West Africa. During this flight, they can fly continuously for 200 days straight – that's 6 months. These birds won't even land or stop on treetops to rest during this time. Our Creator chose to make man, created in His own image, to require an average of 6-8 hours of sleep every 24 hours. A violation of this Divine Design will always lead to much suffering for the individual and often for others as well.

A New Beginning for us every 24 hours is a gift from our gracious Lord. As we begin a New year in 2025, let us remember that there are many Scriptural promises of New Beginnings for the people of God such as the following: "Through the Lord's mercies we are not consumed, Because His compassions fail not. **They are new every morning;** Great is Your faithfulness." *Lamentations 3:22. We are kept in this life by the mercy, compassion, and love of our God. If we could actually see all that our Lord does for us every hour of every day, we would be amazed. There are also times in our lives when it is imperative that we forget the past, in order to make room for the present and future. "But this one thing I do forgetting those things which are behind, and reaching forth unto those things which are before, I press toward the mark for the prize of the high calling of God in Christ Jesus."* *Philippians 3:13-14. Regardless of the losses or disappointments of 2024, our Lord Jesus in His loving kindness gives a new year with new mercies day by day. The Gospel, the Good News of Jesus Christ, now and forever must cause us to be eternal optimists.*

Let us commit our lives anew to Jesus Christ as we enter 2025, trusting in His daily help and eternal mercies. Let us be people of faith---Our best days may yet still be ahead of us!!!

Many Blessings,
Paul Strickland
FaithHealth Connector, Ashe County



American Emergency Vehicles Charity Program Donates to ARC

Ashe Really Cares, Director Mrs. Twila Miller and Rev. David Blackburn, AMS would like to thank AEV Company and Employees for their generous donation of \$5,610.00.

This donation will help supply food to our Ashe County neighbors in need! Thank You!

GOOD SOIL MINISTRY would like to remind everyone that we accept your used literature and other materials monthly at Ashe Really Cares. This literature goes out all over the world to assist in aiding those you are spiritually orphaned. We do appreciate your support with this mission.

GOOD NEWS

We want to CELEBRATE with you and share the GOOD NEWS when exciting things are happening at the church you attend! Please send articles, pictures or flyers to our e-mail address at: ashebaptist@gmail.com, and we will announce on our WKSK weekly radio show, post on the events page of our website, ashebaptist.org, and on our Facebook Page, in addition to printing in this monthly newsletter publication that is posted in color on the website and mailed to 580+ folks in Ashe Co., all across NC, and neighboring states! **As you set dates for church events, Special Singings, Revivals, or Speakers, let us know! You must submit articles for the Newsletter NO LATER THAN the 20th of each month in order for them to appear in the next month's publication.**

ASHE BAPTIST ASSOCIATIONAL OFFICE
Rev. David Blackburn, DOM
Mrs. Debbie Miller, ABA Ministry Assistant
phone: 336-846-5631 email: ashebaptist@gmail.com

ASHE REALLY CARES STAFF
Mrs. Twila Miller, Ashe Really Cares Director
Mr. Nathan McLeese, Ashe Really Cares Assistant
phone: 336-846-5234 email: asherealcares@gmail.com

Mt. Olive Baptist Ordination Service

for new pastor, Rev. Jake Miller. Pastor Miller and his family reside in Jefferson and they are excited to be serving the Lord, at Mt. Olive Baptist Church on Watertank Road in West Jefferson. Pastor Jake Miller and the congregation invite you to come and worship with them each Sunday at 10 am Sunday School - 11 am Worship Service.



Church Announcements

Bald Mountain Baptist –Come join us! Sunday School- 9 am and Worship Service -10 am. Wednesday night services are at 6: 30 pm. Pastor, Rev. John Elledge welcomes you to attend.

Christian Unity Baptist- Sunday Services- 10 am Sunday School 11 am Worship. Wednesday Evening Bible Study for all ages at 6:30 pm. Pastor, Rev. Darien South and the congregation invites you to join them each Sunday Morning and Wednesday Evening.

When you pray, please remember Grassy Creek, Round Knob, Wagoner, Big Laurel, & Riverview. These churches are currently seeking a pastor.

Church Announcements: please send updated church information for the church you attend to: domdblackburn@gmail.com or ashebaptist@gmail.com. We will get all new information provided on Sound Cloud on Friday, the Saturday Radio Program, the www.ashebaptist.org and the monthly newsletters.

Ashe Baptist Campground is being used by Baptist Men and other's at this time as home away from home while they are in our county assisting with disaster needs. We appreciate all the volunteers from everywhere that are working make AsheStrong! If you have disaster needs, please contact AMS, Rev. David Blackburn at the Ashe Baptist Association or Rev. Russell Hart, Co-Ordinator for Hope For The Mountains Disaster Relief- Ashe County. Call the office for more info. 336-846-5631.

Ashe Really Cares Quarterly Meeting will be held on Tuesday, Jan.7 @ 7:00 PM at the Ashe Baptist Conference Room. All Committee Members and interested folks are urged to attend.

Ashe Really Cares is looking for volunteers to join our ministry. If you are interested in giving a few hours a week of your time to help minister to our neighbors please contact Twila Miller at 336-846-5234 or email ashereallycares@gmail.com.

Ashe Baptist Executive Committee Meeting Quarterly Meeting on Thursday, January 9th- 7 pm at Midway Baptist Church. All committee members and pastors are urged to attend.

HOPE FOR THE MOUNTAINS PRAYER TEAM

**MEETS EACH TUESDAY 8:00 AM
MIDWAY BAPTIST CHURCH
EVERYONE IS WELCOME !**

Let's get together and pray!!!

In 2022, 2023 and 2024, the Lord has blessed each **Community Prayer** gathering that we hosted all over Ashe County. Presence of the Holy Spirit has been very evident. We have been strategic in where we gathered to pray as we wanted to move to different parts of Ashe County and even across the region of Appalachia. In **2025**, I want to challenge every church in Ashe County and all across the Appalachia region to intentionally host and schedule prayer gatherings in your community.

May we as THE Church be a house of prayer with every breath we take and with every move we make. When we pray, we experience God in power. When we don't, we don't!

In Christ,
Steve Ashley

2024 Ashe County Children's Christmas Project

Bikes and bags all in rows and volunteers anxious to hand out gifts to parents of 650 Ashe County Children. Kinza Baptist Church handed out back packs to each child also! Gideons greeted everyone and gave out Testament's, prayers were prayed with many as another ACCCP goes down in the books!!!!

Special Thanks to the Hardy's for allowing us to use their building this year for the Christmas Project! We appreciate everyone from donors to volunteers making it possible to help many families this year! Impossible to make this work without all of you! Happy New Year to each and everyone!!!!







ATTENTION

Ashe Baptist Association Church Clerk's

We value your on mission together partnership! Earlier this year, we shared some exciting changes to the Annual Church Profile (ACP) church survey for N.C. Baptists — featuring a new user-friendly [online form](#). Learn more about the benefits of this online form at ncbaptist.org/acp.

Beginning Jan. 1, we need your help to get every church to complete their 2024 Annual Church Profile! Churches who complete their ACP by Jan. 31, 2025, will be entered into a drawing to win a free weekend stay at Fort Caswell for their pastor. Your association can be an ambassador and advocate for this annual survey.

As a reminder, the submitted data for the 2024 ACP reporting period is Jan. 1, 2024 to Dec. 31, 2024. Churches can complete their ACP at ncbaptist.org/acp.

THE DIGITAL
CHURCH SURVEY IS

QUICKER AND EASIER

THAN EVER!



ANNUAL CHURCH PROFILE

NCBAPTIST.ORG/ACP

WE HAVE THE KEY TO YOUR NEW HOME!



Ashe County Habitat for Humanity is seeking qualified applicants for the next home to be built in Ashe County.

- If you have a housing need and would like to inquire about buying a Habitat house, plan to attend this informational meeting.
- The application period will be open until February 15, 2025

Questions:

Call 336-846-2525 ext. 3
info@ashehabitat.org
facebook.com/ashehabitat
www.ashehabitat.org

WHERE

**Ashe County Library
Community Room (Downstairs)
148 Library Drive, West Jefferson**

WHEN

Monday, January 13, 2025

5:15pm



October 17, 2024

Dear Hope for the Mountains Disaster Relief Friends,

As we anticipated the arrival of Hurricane Helene, we did not expect the devastation it would do to the mountain communities. Homes, businesses, and towns were washed away overnight. Worse yet, many lives were swept away into eternity. Since that day, we have seen many volunteers come to our aid to help with the devastation. Many organizations have come and are still here to assist those in need. However, before the volunteers and organization came here, the church checked with neighbors and helped where possible. Even before the flood waters receded, the church in communities shared Christ's love as He compelled us to go. This letter is intended to be an update, but my heart is full seeing the hands, feet, and mouthpiece of Jesus in action.

The Hope for the Mountains Disaster Relief was organized immediately after Helene to assist those in need. The group of volunteers is not limited to one church or denomination but is comprised of Christians who are eager to lend a helping hand. We have already completed over 90 jobs, with many more currently underway. However, there are still around 100 urgent jobs that need to be addressed. The requests we are receiving include excavating work, gravel hauling, arborist services, home repairs, mud outs, food supplies, and bridge work. As of October 15th, we have received a little over two thousand dollars in donations. If you or your group would like to help with these jobs, please call 336-977-4980 or 336-469-2270 as soon as possible.

I have been asked where someone can give. There is a special fund set up to help individuals in need. It is *Hope for the Mountains Disaster Relief Fund*. Checks can be mailed to Ashe Baptist Association PO Box 850 Jefferson, NC 28640. Or visit the Facebook page *Hope for the Mountains Disaster Relief of Ashe County* and scan the QR code.

People are in need and will be for a long time. Your contributions, whether through volunteering or donations, are making a significant impact. Seeing Christians come together, working for a common cause, reminds me of the words of Jesus, "...as you did it to one of the least of these My brethren, you did it unto Me" (Matt. 25:40). I want to express my sincere gratitude to everyone. Let's continue being the church of Jesus Christ until we hear Him say, "well done."

In Christ,

Russell Hart
336-469-2270

Hope for the Mountains Disaster Relief - Ashe County, NC

Volunteer driven relief efforts in the aftermath of Hurricane Helene
*Bringing Volunteers Together to
Provide Immediate Relief*



SCAN this QR code to donate directly to
**Hope for the Mountains
Disaster Relief - Ashe County**
*This is a designated account for Disaster Relief
through the Ashe Baptist Association.*





Ashe Baptist Association
 PO Box 850
 Jefferson, NC 28640

Non-Profit Organization
 U.S. Postage Paid
 Permit No. 1

Return Service Requested

Discipleship Tip of the Month

Jesus is the Reason for the Season Luke 2:1-20

Even the will of heathen monarchs are made to fulfill the will of God. The world excludes Christ. No room at the Inn. Do you have room for Jesus, this Christmas? For some it is welcome news from Heaven . God chooses for his instruments the humble rather than the high and mighty. God grants his divine favor to those who are serving Him in their proper sphere of life. Not the idle man, not to the one who thinks he is perfect but to him who does his best in the position God has given him or her. Even angels take interest. They inquire of this event. They are reverent and they rejoice. They carry the message and we should too. This Christmas and in the coming year ponder and dwell upon the true thoughts of the Christ at Christmas and your Spirit will be satisfied. Jesus is the reason for the season!

January 2025

- 1 Happy New Year
ABA/ARC Offices Closed
- 7 ARC Committee Meeting 7pm
@ABA Board Room
- 9 ABA Executive Committee
Meeting 7 pm at Midway Baptist
- 19 Sanctity of Life Sunday
- 26 NC Baptist Men's Day



JANUARY 2025

SUN	MON	TUE	WED	THU	FRI	SAT
29	30	31	1	2	3	4
5	6	7	8	9	10	11
12	13	14	15	16	17	18
19	20	21	22	23	24	25
26	27	28	29	30	31	1

February 2025

- 9 Souper Bowl Sunday
- 17 President's Day
ABA/ARC Offices Closed



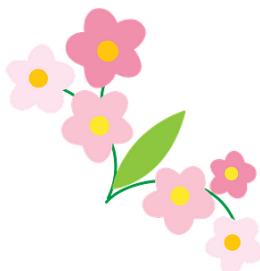
FEBRUARY 2025

SUN	MON	TUE	WED	THU	FRI	SAT
26	27	28	29	30	31	1
2	3	4	5	6	7	8
9	10	11	12	13	14	15
16	17	18	19	20	21	22
23	24	25	26	27	28	1
2	3	4	5	6	7	8

MARCH 2025

March 2025

- 2-9 Annie Armstrong Week of Prayer
North American Missions
- 9 Spring Forward
- 20 Spring Begins



SUN	MON	TUE	WED	THU	FRI	SAT
23	24	25	26	27	28	1
2	3	4	5	6	7	8
9	10	11	12	13	14	15
16	17	18	19	20	21	22
23	24	25	26	27	28	29
30	31	1	2	3	4	5