



# FAST SHELTER CUT SHEET

## CATEGORY

Rapid Deployment Extreme  
Weather Shelter

## PRODUCT APPLICATION:

Emergency/Disaster,  
Medical,  
Fire,  
Police,  
Ambulance,  
Military

## TIME TO DEPLOY:

60 Seconds



## SELF SUPPORTING RIGID FOLDING SHELTER WITH INTEGRATED FLOOR

**Never purchase another tent.** Only UniFold TM products can be reused hundreds of times because they are one piece, with no free parts to lose or break. The twin wall construction and integrated floor make them suited to resisting extreme wind, rain, and snow, while easily accepting air conditioning or heating. Deploy them on grass, asphalt or concrete, with no wasted space between them because they don't need any ropes or pegs; they are simply anchored with weight on the rigid floor.

## UNIFOLD

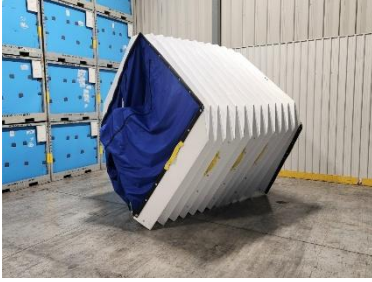
The Fastest and Easiest Deployment,  
Period.

P: 416 840 6321  
E: [steveo@unifoldsshelters.com](mailto:steveo@unifoldsshelters.com)  
W: [www.unifoldsshelters.com](http://www.unifoldsshelters.com)

1 Parratt Road  
Uxbridge, Ontario, Canada  
L9P 1R1

## PRODUCT APPLICATIONS

At UniFold, our mission is to provide those in need of rapid deployment shelters, designed for extreme weather conditions, climates, and situations. Our shelters are versatile and adaptable, setting up in seconds. Unlike traditional tents our shelters readily accept HVAC and lighting and are impermeable to liquids ensuring effective hygiene and comfort for long duration deployments. These features provide a dignified and efficient solution for the ultimate in emergency response capabilities.



## KEY FEATURES

- Deploys in seconds on any surface with no assembly and no need for ropes, stakes, or inflation.
- Designed for emergency disaster, medical, fire, police, ambulance, and military use.
- Twin wall polypropylene paneled structure, including insulated rigid floor.
- Exoskeleton structures are practically indestructible as folds can be reset if crushed
- Easily heated and air-conditioned
- Reusable hundreds of times.
- Minimal training due to totally integrated one piece design.

## TECHNICAL DATA SPECIFICATION

Size	13W X 14'L	13W X 18L	13W X 22L
Height	9'	9'	9'
Storage Bag	Optional	Optional	Optional
Cycle Life	>300	>300	>300
Storage Dimensions	109"X100"X14"	109X1100X18"	109"X100X22"
Weight	170lbs	205lbs	240lbs
Standard Colour	Blue & White	Blue & White	Blue & White
End Wall Material	Nylon	Nylon	Nylon
Floor Walls & Roof Material	Polypropylene	Polypropylene	Polypropylene

\*Pricing Reflects Project Specific Quantities & Features, Call For Quote

### UNIFOLD

The Fastest and Easiest Deployment,  
Period.

P: 416 840 6321  
E: [steveo@unifoldsshelters.com](mailto:steveo@unifoldsshelters.com)  
W: [www.unifoldsshelters.com](http://www.unifoldsshelters.com)

1 Parratt Road  
Uxbridge, Ontario, Canada  
L9P 1R1