



## UniFold Shelters and PPE Equipment

Manufactured by:  
Pine Valley Packaging Group o/a UniFold Shelters  
1 Parratt Road  
Uxbridge, Ontario, Canada L9T 1R1

[unifoldshelters.com](http://unifoldshelters.com)

Contact: Steve Ostrowski  
Director of Business Development  
Pine Valley Packaging Group  
Direct/Mobile: 416-840-6321  
[steveo@pinevalleypackaging.ca](mailto:steveo@pinevalleypackaging.ca)

Table of Contents	Pg.
▪ Product details including specifications, certifications and product photos	2-4
▪ Available Stock & Expiration Dates and Location(s)	4
▪ Country of Origin / Manufacturing	5
▪ Lead time to arrive to our Ontario Health warehouse in Mississauga, Ontario	5
▪ Payment terms. Are the terms negotiable?	6
▪ References regarding the Ontario healthcare sector?	6
▪ Experience. Has your organization previously purchased from the OEM?	6
▪ Licenses. Does your organization have an MDEL or MDAL license for the products?	6-7
▪ Price List	7
▪ IN DEVELOPMENT: UVC Sterilization 'Light Showers'	7

## Supplementary PPE Bio-Secure Positive Pressure Shelter Systems

The most reliable and effective protection for front line responders from external biological threats, these systems move fresh clean air from the rear of the shelter to the front, under pressure exiting at the hand holes/service ports ensuring contagions do not penetrate the space occupied by front line responders, and drastically reducing the need for PPE. These are Class 1 Medical Devices.

### Ultra-Efficient Drive Through Testing Station



### Demonstration of positive pressure airflow



### Ontario's EMAT using UniFold shelters in negative pressure bio-containment mode



## Supplementary PPE Shelters provide FULL BARRIER PROTECTION both outdoors and indoors as:

### In Positive Pressure Mode:

- Walk-up or Drive Thru Testing Stations
- Registration Stations
- Sterile Supply Storage
- Rest and Recuperation Dormitories

### In Negative Pressure Mode (reverse fan direction):

- Triage Containment Shelters
- Hospital Surge ICU Wards
- Bio-Secure Hospital Units

## Specifications

- Designed for emergency medical, fire, police, ambulance, and military use
- Deploy in seconds on any surface with minimal assembly and no need for ropes or stakes
- Twin wall polypropylene paneled including rigid floor and weather resistant and insulated
- Exoskeleton structures are food grade, autoclavable, hygienic
- Easily heated and air-conditioned
- Reusable hundreds of times. Easily sterilized with UVC light.

## UniFold Shelters Weights and Dimensions

Product	Width	Length	Height	Weight	Store Dims	Cycle Life
Bio Secure Positive Pressure Shelter with Clear End Walls	11	10	7	47	7,7,1	>300
Hospital Surge Shelter with Clear Front Wall and Opaque Rear Wall	11	10	7	67	7,7,1	>300
Hospital Surge Shelter with Clear Front Wall and Opaque Rear Wall	11	14	7	87	7,7,1	>300
Hospital Surge Shelter with Clear Front Wall and Opaque Rear Wall	11	18	7	107	7,7,1	>300
Hospital Surge Shelter with Clear Front Wall and Opaque Rear Wall	11	22	7	127	7,7,1	>300
Hospital Surge Shelter with Clear Front Wall and Opaque Rear Wall	11	26	7	147	7,7,1	>300
Hospital Surge Shelter with Clear Front Wall and Opaque Rear Wall	11	30	7	167	7,7,1	>300
Semi-Secure Storage Shelter With Opaque End Walls	11	10	7	47	7,7,0.75	>300
Semi-Secure Storage Shelter With Opaque End Walls	11	14	7	67	7,7,1	>300
Semi-Secure Storage Shelter With Opaque End Walls	11	18	7	87	7,7,1.25	>300
Semi-Secure Storage Shelter With Opaque End Walls	11	22	7	107	7,7,1.5	>300
Semi-Secure Storage Shelter With Opaque End Walls	11	26	7	127	7,7,1.75	>300
Semi-Secure Storage Shelter With Opaque End Walls	11	30	7	147	7,7,2	>300
One Lane Decon Shower System	10	18	6.5	147	6,6,1.5	>300
Interior Undress Compartment	9	4	7	na	na	>300
Interior Wash Shower Stall	9	5	7	na	na	>300
Interior Rinse Shower Stall	9	5	7	na	na	>300
Interior Redress Compartment	9	4	7	na	na	>300
Wash Plumbing Kit	na	na	na	na	na	>300
Rinse Plumbing Kit	na	na	na	na	na	>300
Three Lane Decon System	11	22	7	197	7,7,2.5	>300
Interior Undress Compartments	4	5	7	na	na	>300
Interior Wash Shower Stalls	4	5	7	na	na	>300
Interior Rinse Shower Stalls	4	5	7	na	na	>300
Interior Redress Compartments	4	5	7	na	na	>300
Wash Plumbing Kits	na	na	na	na	na	>300
Rinse Plumbing Kits	na	na	na	na	na	>300
Storage Bag	7	7	1-2	na	na	>300

## PPE Flexible Face Shield

---

- Soft Lightweight Foam Headband
- Rigid yet flexible vinyl shield provides all day comfort
- Adjustable slide buckle with generous size range
- Notched design provides a perfect individual fit.
- Flexes away from hard impacts when in use.
- Extended side wraps for increased coverage.
- Flexible clear vinyl shield can roll up for compact storage.

### Bulk Packaging for High Ship Density



### Comfortable Foam Brow and Infinite Slide Adjustment



## Available Stock Expiration and Location

---

### Shelter Systems: Qty 4 10X10X8 Positive Pressure Bio Secure Systems

Sample for evaluation on request

Delivery/Production Rate

Within 3 weeks from receipt of order: 50 systems/day

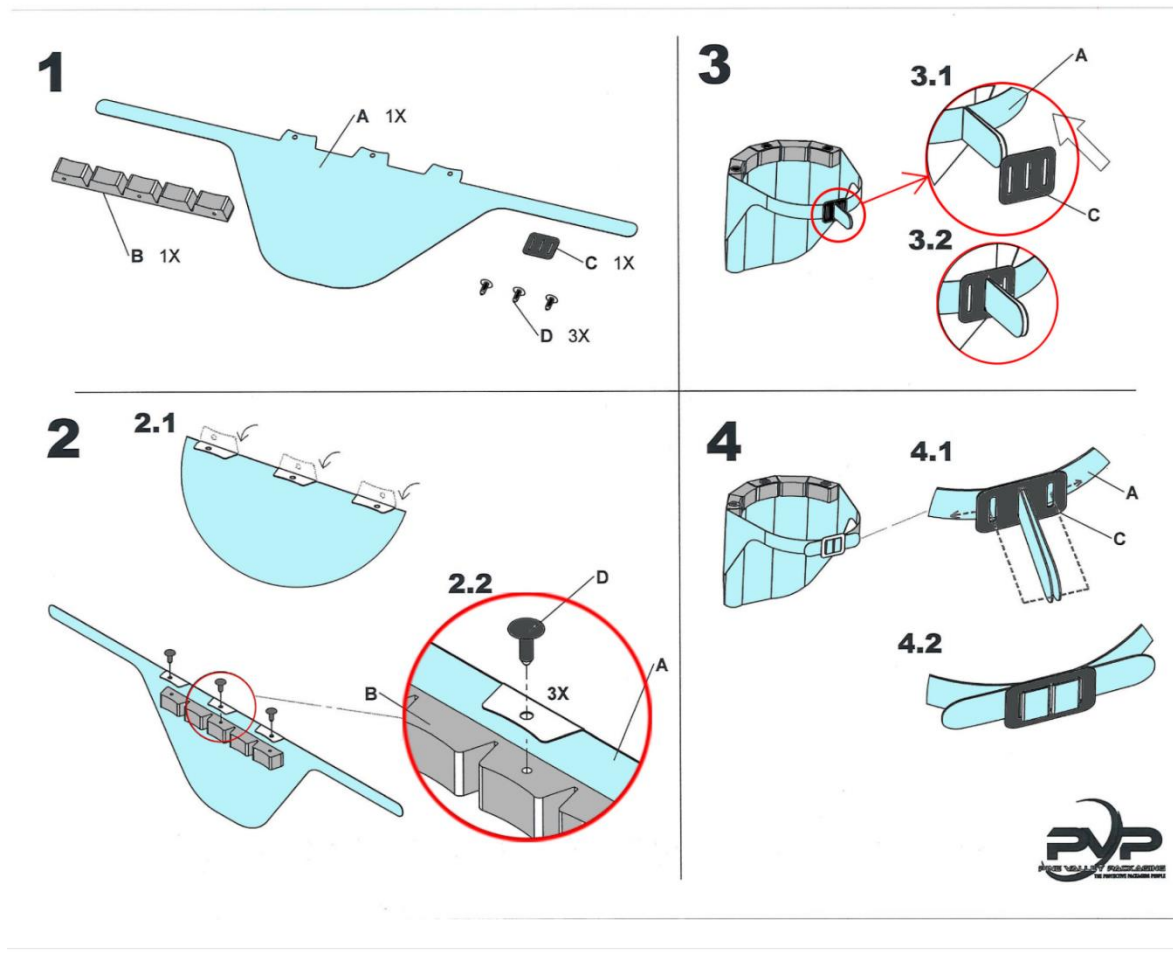
Within 4 weeks from receipt of order: 150-250 systems/day depending on size

### Face Shields: Sample for evaluation on request

Delivery/Production Rate

Within 1 week from receipt of order: 5000/day

Within 2 weeks from receipt of order: 10000/day



## Country of Origin / Manufacturing

All products are designed and manufactured by Pine Valley Packaging Group in Uxbridge Ontario Canada, except the fans used by the positive pressure Bio Secure Shelters which are made in China.

## Leadtime to Deliver to Mississauga Warehouse

### Shelter Systems: Qty 4 10X10X8 Positive Pressure Bio Secure Systems

Delivery/Production Rate

Within 3 weeks from receipt of order: 50 systems/day

Within 4 weeks from receipt of order: 150-250 systems/day depending on size

### Face Shields: Sample for evaluation on request

Delivery/Production Rate

Within 1 week from receipt of order: 5000/day

Within 2 weeks from receipt of order: 10000/day



## Payment Terms

---

50% Deposit, Balance Due To Ship

## References Relevant to the Province of Ontario

---

UniFold has manufactured and delivered with no disputes or product issues the following to the Province of Ontario, via Ferno Canada:

Ontario Ministry of Health, 2004  
Total Quantity of ~ 180 systems (one per hospital emergency department)  
Mass Decontamination Shower Shelter Systems  
Project value ~\$7,000,000

Ontario Ministry of Health, 2005  
Total Quantity of ~21 systems  
Bio Secure Negative Pressure  
Project value ~\$500,000

**Note: The distributor agreement with Ferno Canada is no longer effective and as the manufacturer we are providing factory direct wholesale prices.**

Other prominent customers of UniFold include the State of New York Weapons of Mass Destruction Task Force, the Utah Department of Health, Texas A&M University Fire Department, the Canadian Forces, The United Nations, and the Paris (France) Fire Department.

## OEM Relationship

---

As noted above, UniFold product are manufactured in Uxbridge Ontario.

Our facility covers 100,000 square feet and employs 250 at full capacity. We have the resources and the supply chain to respond to large volume orders quickly.

## Licenses

---

**Subject: Submission No. [UM-SS-40030] - Acknowledgement of receipt of your MDEL application**

Health Canada acknowledges receipt of your application for a Medical Device Establishment License (MDEL) submitted on **05/01/2020**.

In light of the unprecedented demand for Personal Protective Equipment (PPE) and other devices to help combat COVID-19 and the extraordinary number of companies making efforts to supply these products in Canada, Health Canada has encountered an unanticipated increase in applications for MDELs.

In order to facilitate rapid access to needed supplies, Health Canada is implementing a temporary discretionary measure by assigning MDEL applicants an interim Submission Number (SN). Your assigned SN is:

**UM-SS-40030**

## Price List

Product	Size	Includes	Unit Price CDN
Face Shield	Adjustable	Foam Brow Trim	4.00
<b>Pressurized Shelters</b>			
Bio Secure Positive Pressure Shelter with Clear End Walls	11X10	Shelter c/w Fan & Floor	5320.00
Bio Secure Negative Pressure Shelter with Clear Front Wall	11X10	Shelter c/w Fan & Floor	5320.00
<b>Shelters with Clear Front and Opaque Rear End Walls</b>			
Triage/Surge Shelter	11X14	Rigid Shelter with Floor	7320.00
Triage/Surge Shelter	11X18	Rigid Shelter with Floor	9320.00
Triage/Surge Shelter	11X22	Rigid Shelter with Floor	11320.00
Triage/Surge Shelter	11X26	Rigid Shelter with Floor	13320.00
Triage/Surge Shelter	11X30	Rigid Shelter with Floor	15320.00
<b>Shelters with Opaque Front and Rear End Walls</b>			
Semi-Secure/Private Storage Shelter	11X10	Rigid Shelter with Floor	5320.00
Semi-Secure/Private Storage Shelter	11X14	Rigid Shelter with Floor	7320.00
Semi-Secure/Private Storage Shelter	11X18	Rigid Shelter with Floor	9320.00
Semi-Secure/Private Storage Shelter	11X22	Rigid Shelter with Floor	11320.00
Semi-Secure/Private Storage Shelter	11X26	Rigid Shelter with Floor	13320.00
Semi-Secure/Private Storage Shelter	11X30	Rigid Shelter with Floor	15320.00
<b>Decontamination Showers</b>			
One Lane Decontamination Shower System	11X22	Rigid Shelter with Floor	27770.00
<b>Accessories</b>			
Storage Bag 10-22 size		Scrim reinforced PVC bag	1000.00
Storage Bag 26-30 size		Scrim reinforced PVC bag	1500.00

## In Development UVC Sterilization 'Light Showers'

Panels are see-through for illustrative purposes only. Light blocking entrance and exit walls not shown for illustrative purposes. PPE to be worn by users as they walk through and sterilize what is worn for removal/change out. UVC Dolly is for aisles, elevators, and rooms.

