



MANDELL ENVIRONMENTAL CONSULTING

409 MINNISINK ROAD • SUITE 102 • TOTOWA, NJ 07512 • (973) 785-7574 • FAX (973) 785-0561

Limited Water Sampling Report

Project Name: Unified Vailsburg Services Organization
Project Location: 1033 South Orange Avenue, Newark, NJ
Date of Sampling: April 16, 2021

Limited water sampling was performed by Mandell Environmental Consulting at Unified Vailsburg Services Organization, 1033 South Orange Avenue, Newark, NJ. Water samples were collected from the kitchen sink faucet and water fountains used by the child care center. Samples were also collected from 50% of the other indoor water faucets utilized by the child care. The samples were collected prior to water being used in the building for a minimum of 8 hours and not longer than 48 hours. The samples were collected in 250 milliliter (ml) containers accordance with New Jersey Regulations

The samples collected were submitted for analysis to Pace Analytical, 575 Broad Hollow Road, Melville, NY 11747, certification # NY158. Samples were analyzed by Graphite Furnace AA, EPA 200.9. The following table contains the results of the sampling. The maximum contaminant level (MCL) for lead in drinking water is 15 ug/L and copper 1,300 ug/L. (Laboratory Results and sampling forms Attached).

Sample Date 08/27/19

Sample Number	Source	Results Lead	Results Copper	Units	Pos/Neg
1	Outlet 2	<1.0	14.7	Ug/L	Neg.
2	Outlet 3	2.8	39.7	ug/L	Neg.
3	Outlet 4	<1.0	9.4	ug/L	Neg.
4	Outlet 5	<1.0	9.1	ug/L	Neg.
5	Outlet 7	1.3	31.1	ug/L	Neg.
6	Water Fountain 1	<1.0	719	ug/L	Neg.
7	Water Fountain 2	<1.0	574	ug/L	Neg.
8	Outlet 8	1.1	30.1	ug/L	Neg.
9	Water Fountain 3	<1.0	619	ug/L	Neg.
10	Outlet 10	1.3	21.3	ug/L	Neg.
11	Outlet 12	1.6	77.2	ug/L	Neg.
12	Outlet 17	1.1	12.6	ug/L	Neg.
13	Outlet 14	<1.0	19.3	ug/L	Neg.
14	Outlet 19	<1.0	5.9	ug/L	Neg.

The laboratory results show that none of the samples were found to exceed the lead in drinking water action level of 15 ug/L and copper 1,300 ug/L. Sampling forms and diagram are attached.

Sampling Performed by: Darren Slack
NJ Lead Inspector/Risk Assessor
Mandell Environmental Consulting
409 Minnisink Road, Suite 102
Totowa, NJ 07512

Signed: *Darren Slack* Date: 5-4-2021

April 26, 2021

Stuart Casciano
Mandell Environmental Consulting
409 Minnisink Road
Suite 102
Totowa, NJ 07512

RE: Project: UNIFIED VAILSBURG SERVICES ORG
Pace Project No.: 70169763

Dear Stuart Casciano:

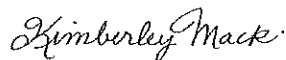
Enclosed are the analytical results for sample(s) received by the laboratory on April 19, 2021. The results relate only to the samples included in this report. Results reported herein conform to the applicable TNI/NELAC Standards and the laboratory's Quality Manual, where applicable, unless otherwise noted in the body of the report.

The test results provided in this final report were generated by each of the following laboratories within the Pace Network:

- Pace Analytical Services - Melville

If you have any questions concerning this report, please feel free to contact me.

Sincerely,



Kimberley M. Mack
kimberley.mack@pacelabs.com
(631)694-3040
Project Manager

Enclosures



REPORT OF LABORATORY ANALYSIS

This report shall not be reproduced, except in full,
without the written consent of Pace Analytical Services, LLC.

CERTIFICATIONS

Project: UNIFIED VAILSBURG SERVICES ORG
Pace Project No.: 70169763

Pace Analytical Services Long Island

Virginia Certification # 460302

Delaware Certification # NY10478

Delaware Certification # NY10478

575 Broad Hollow Rd, Melville, NY 11747

New York Certification #: 10478 Primary Accrediting Body

New Jersey Certification #: NY158

Pennsylvania Certification #: 68-00350

Connecticut Certification #: PH-0435

Maryland Certification #: 208

Rhode Island Certification #: LAO00340

Massachusetts Certification #: M-NY026

New Hampshire Certification #: 2987

REPORT OF LABORATORY ANALYSIS

This report shall not be reproduced, except in full,
without the written consent of Pace Analytical Services, LLC.

ANALYTICAL RESULTS

Project: UNIFIED VAILSBURG SERVICES ORG
Pace Project No.: 70169763

Sample: 1-OUTLET 2	Lab ID: 70169763001	Collected: 04/16/21 14:00	Received: 04/19/21 19:00	Matrix: Drinking Water				
Parameters	Results	Units	Report Limit	DF	Prepared	Analyzed	CAS No.	Qual
200.8 MET ICPMS Drinking Water	Analytical Method: EPA 200.8 Pace Analytical Services - Melville							
Copper	14.7	ug/L	2.0	1		04/23/21 13:19	7440-50-8	
Lead	<1.0	ug/L	1.0	1		04/23/21 13:19	7439-92-1	

REPORT OF LABORATORY ANALYSIS

This report shall not be reproduced, except in full,
without the written consent of Pace Analytical Services, LLC.

ANALYTICAL RESULTS

Project: UNIFIED VAILSBURG SERVICES ORG

Pace Project No.: 70169763

Sample: 2-OUTLET 3	Lab ID: 70169763002	Collected: 04/16/21 14:00	Received: 04/19/21 19:00	Matrix: Drinking Water					
Parameters	Results	Units	Report Limit	DF	Prepared	Analyzed	CAS No.	Qual	
200.8 MET ICPMS Drinking Water	Analytical Method: EPA 200.8 Pace Analytical Services - Melville								
Copper	39.7	ug/L	2.0	1		04/23/21 13:20	7440-50-8		
Lead	2.8	ug/L	1.0	1		04/23/21 13:20	7439-92-1		

REPORT OF LABORATORY ANALYSIS

This report shall not be reproduced, except in full,
without the written consent of Pace Analytical Services, LLC.

ANALYTICAL RESULTS

Project: UNIFIED VAILSBURG SERVICES ORG

Pace Project No.: 70169763

Sample: 3-OUTLET 4		Lab ID: 70169763003	Collected: 04/16/21 14:00	Received: 04/19/21 19:00	Matrix: Drinking Water			
Parameters	Results	Units	Report Limit	DF	Prepared	Analyzed	CAS No.	Qual
200.8 MET ICPMS Drinking Water		Analytical Method: EPA 200.8 Pace Analytical Services - Melville						
Copper	9.4	ug/L	2.0	1		04/23/21 13:21	7440-50-8	
Lead	<1.0	ug/L	1.0	1		04/23/21 13:21	7439-92-1	

REPORT OF LABORATORY ANALYSIS

This report shall not be reproduced, except in full,
without the written consent of Pace Analytical Services, LLC.

ANALYTICAL RESULTS

Project: UNIFIED VAILSBURG SERVICES ORG

Pace Project No.: 70169763

Sample: 4-OUTLET 5	Lab ID: 70169763004	Collected: 04/16/21 14:00	Received: 04/19/21 19:00	Matrix: Drinking Water					
Parameters	Results	Units	Report Limit	DF	Prepared	Analyzed	CAS No.	Qual	
200.8 MET ICPMS Drinking Water	Analytical Method: EPA 200.8 Pace Analytical Services - Melville								
Copper	9.1	ug/L	2.0	1		04/23/21 13:24	7440-50-8		
Lead	<1.0	ug/L	1.0	1		04/23/21 13:24	7439-92-1		

REPORT OF LABORATORY ANALYSIS

This report shall not be reproduced, except in full,
without the written consent of Pace Analytical Services, LLC.

ANALYTICAL RESULTS

Project: UNIFIED VAILSBURG SERVICES ORG
Pace Project No.: 70169763

Sample: 5-OUTLET 7		Lab ID: 70169763005	Collected: 04/16/21 14:00	Received: 04/19/21 19:00	Matrix: Drinking Water			
Parameters	Results	Units	Report Limit	DF	Prepared	Analyzed	CAS No.	Qual
200.8 MET ICPMS Drinking Water		Analytical Method: EPA 200.8 Pace Analytical Services - Melville						
Copper	31.1	ug/L	2.0	1		04/23/21 13:28	7440-50-8	
Lead	1.3	ug/L	1.0	1		04/23/21 13:28	7439-92-1	

REPORT OF LABORATORY ANALYSIS

This report shall not be reproduced, except in full,
without the written consent of Pace Analytical Services, LLC.

ANALYTICAL RESULTS

Project: UNIFIED VAILSBURG SERVICES ORG
Pace Project No.: 70169763

Sample: 6-WATER FOUNTAIN 1		Lab ID: 70169763006	Collected: 04/16/21 14:00	Received: 04/19/21 19:00	Matrix: Drinking Water			
Parameters	Results	Units	Report Limit	DF	Prepared	Analyzed	CAS No.	Qual
200.8 MET ICPMS Drinking Water		Analytical Method: EPA 200.8 Pace Analytical Services - Melville						
Copper	719	ug/L	2.0	1		04/23/21 13:29	7440-50-8	
Lead	<1.0	ug/L	1.0	1		04/23/21 13:29	7439-92-1	

REPORT OF LABORATORY ANALYSIS

This report shall not be reproduced, except in full,
without the written consent of Pace Analytical Services, LLC.

ANALYTICAL RESULTS

Project: UNIFIED VAILSBURG SERVICES ORG
Pace Project No.: 70169763

Sample: 7-WATER FOUNTAIN 2		Lab ID: 70169763007	Collected: 04/16/21 14:00	Received: 04/19/21 19:00	Matrix: Drinking Water			
Parameters	Results	Units	Report Limit	DF	Prepared	Analyzed	CAS No.	Qual
200.8 MET ICPMS Drinking Water		Analytical Method: EPA 200.8 Pace Analytical Services - Melville						
Copper	574	ug/L	2.0	1		04/23/21 13:30	7440-50-8	
Lead	<1.0	ug/L	1.0	1		04/23/21 13:30	7439-92-1	

REPORT OF LABORATORY ANALYSIS

This report shall not be reproduced, except in full,
without the written consent of Pace Analytical Services, LLC.

ANALYTICAL RESULTS

Project: UNIFIED VAILSBURG SERVICES ORG
Pace Project No.: 70169763

Sample: 8- OUTLET 8		Lab ID: 70169763008	Collected: 04/16/21 14:00	Received: 04/19/21 19:00	Matrix: Drinking Water			
Parameters	Results	Units	Report Limit	DF	Prepared	Analyzed	CAS No.	Qual
200.8 MET ICPMS Drinking Water		Analytical Method: EPA 200.8 Pace Analytical Services - Melville						
Copper	30.1	ug/L	2.0	1		04/23/21 13:31	7440-50-8	
Lead	1.1	ug/L	1.0	1		04/23/21 13:31	7439-92-1	

REPORT OF LABORATORY ANALYSIS

This report shall not be reproduced, except in full,
without the written consent of Pace Analytical Services, LLC.

ANALYTICAL RESULTS

Project: UNIFIED VAILSBURG SERVICES ORG
Pace Project No.: 70169763

Sample: 9- WATER FOUNTAIN 3		Lab ID: 70169763009	Collected: 04/16/21 14:00	Received: 04/19/21 19:00	Matrix: Drinking Water			
Parameters	Results	Units	Report Limit	DF	Prepared	Analyzed	CAS No.	Qual
200.8 MET ICPMS Drinking Water		Analytical Method: EPA 200.8 Pace Analytical Services - Melville						
Copper	619	ug/L	2.0	1		04/23/21 13:32	7440-50-8	
Lead	<1.0	ug/L	1.0	1		04/23/21 13:32	7439-92-1	

REPORT OF LABORATORY ANALYSIS

This report shall not be reproduced, except in full,
without the written consent of Pace Analytical Services, LLC.

ANALYTICAL RESULTS

Project: UNIFIED VAILSBURG SERVICES ORG
Pace Project No.: 70169763

Sample: 10- OUTLET 10	Lab ID: 70169763010	Collected: 04/16/21 14:00	Received: 04/19/21 19:00	Matrix: Drinking Water					
Parameters	Results	Units	Report Limit	DF	Prepared	Analyzed	CAS No.	Qual	
200.8 MET ICPMS Drinking Water	Analytical Method: EPA 200.8 Pace Analytical Services - Melville								
Copper	21.3	ug/L	2.0	1		04/23/21 13:33	7440-50-8		
Lead	1.3	ug/L	1.0	1		04/23/21 13:33	7439-92-1		

REPORT OF LABORATORY ANALYSIS

This report shall not be reproduced, except in full,
without the written consent of Pace Analytical Services, L.L.C.

ANALYTICAL RESULTS

Project: UNIFIED VAILSBURG SERVICES ORG
Pace Project No.: 70169763

Sample: 11- OUTLET 12		Lab ID: 70169763011	Collected: 04/16/21 14:00	Received: 04/19/21 19:00	Matrix: Drinking Water			
Parameters	Results	Units	Report Limit	DF	Prepared	Analyzed	CAS No.	Qual
200.8 MET ICPMS Drinking Water		Analytical Method: EPA 200.8 Pace Analytical Services - Melville						
Copper	77.2	ug/L	2.0	1		04/23/21 13:34	7440-50-8	
Lead	1.6	ug/L	1.0	1		04/23/21 13:34	7439-92-1	

REPORT OF LABORATORY ANALYSIS

This report shall not be reproduced, except in full,
without the written consent of Pace Analytical Services, LLC.

ANALYTICAL RESULTS

Project: UNIFIED VAILSBURG SERVICES ORG
Pace Project No.: 70169763

Sample: 12- OUTLET 17		Lab ID: 70169763012	Collected: 04/16/21 14:00	Received: 04/19/21 19:00	Matrix: Drinking Water			
Parameters	Results	Units	Report Limit	DF	Prepared	Analyzed	CAS No.	Qual
200.8 MET ICPMS Drinking Water		Analytical Method: EPA 200.8 Pace Analytical Services - Melville						
Copper	12.6	ug/L	2.0	1		04/23/21 13:35	7440-50-8	
Lead	1.1	ug/L	1.0	1		04/23/21 13:35	7439-92-1	

REPORT OF LABORATORY ANALYSIS

This report shall not be reproduced, except in full,
without the written consent of Pace Analytical Services, LLC.

ANALYTICAL RESULTS

Project: UNIFIED VAILSBURG SERVICES ORG

Pace Project No.: 70169763

Sample: 13-OUTLET 14		Lab ID: 70169763013	Collected: 04/16/21 14:00	Received: 04/19/21 19:00	Matrix: Drinking Water			
Parameters	Results	Units	Report Limit	DF	Prepared	Analyzed	CAS No.	Qual
200.8 MET ICPMS Drinking Water		Analytical Method: EPA 200.8 Pace Analytical Services - Melville						
Copper	19.3	ug/L	2.0	1		04/23/21 13:38	7440-50-8	
Lead	<1.0	ug/L	1.0	1		04/23/21 13:38	7439-92-1	

REPORT OF LABORATORY ANALYSIS

This report shall not be reproduced, except in full,
without the written consent of Pace Analytical Services, LLC.

ANALYTICAL RESULTS

Project: UNIFIED VAILSBURG SERVICES ORG
Pace Project No.: 70169763

Sample: 14-OUTLET 19	Lab ID: 70169763014	Collected: 04/16/21 14:00	Received: 04/19/21 19:00	Matrix: Drinking Water				
Parameters	Results	Units	Report Limit	DF	Prepared	Analyzed	CAS No.	Qual
200.8 MET ICPMS Drinking Water	Analytical Method: EPA 200.8 Pace Analytical Services - Melville							
Copper	15.9	ug/L	2.0	1		04/23/21 13:39	7440-50-8	
Lead	<1.0	ug/L	1.0	1		04/23/21 13:39	7439-92-1	

REPORT OF LABORATORY ANALYSIS

This report shall not be reproduced, except in full,
without the written consent of Pace Analytical Services, LLC.

QUALITY CONTROL DATA

Project: UNIFIED VAILSBURG SERVICES ORG
Pace Project No.: 70169763

QC Batch: 205246 Analysis Method: EPA 200.8
QC Batch Method: EPA 200.8 Analysis Description: 200.8 MET No Prep Drinking Water
Laboratory: Pace Analytical Services - Melville
Associated Lab Samples: 70169763001, 70169763002, 70169763003

METHOD BLANK: 1015282 Matrix: Water
Associated Lab Samples: 70169763001, 70169763002, 70169763003

Parameter	Units	Blank Result	Reporting Limit	Analyzed	Qualifiers
Copper	ug/L	<2.0	2.0	04/23/21 12:02	
Lead	ug/L	<1.0	1.0	04/23/21 12:02	

LABORATORY CONTROL SAMPLE: 1015283

Parameter	Units	Spike Conc.	LCS Result	LCS % Rec	% Rec Limits	Qualifiers
Copper	ug/L	50	48.5	97	85-115	
Lead	ug/L	50	49.3	99	85-115	

MATRIX SPIKE SAMPLE: 1015286

Parameter	Units	70169937001 Result	Spike Conc.	MS Result	MS % Rec	% Rec Limits	Qualifiers
Copper	ug/L	243	50	281	76	70-130	
Lead	ug/L	<1.0	50	46.9	92	70-130	

MATRIX SPIKE SAMPLE: 1015288

Parameter	Units	70168881049 Result	Spike Conc.	MS Result	MS % Rec	% Rec Limits	Qualifiers
Copper	ug/L	122	50	156	68	70-130	M1
Lead	ug/L	2.1	50	43.8	83	70-130	

SAMPLE DUPLICATE: 1015285

Parameter	Units	70169937001 Result	Dup Result	RPD	Qualifiers
Copper	ug/L	243	248	2	
Lead	ug/L	<1.0	<1.0		

SAMPLE DUPLICATE: 1015287

Parameter	Units	70168881049 Result	Dup Result	RPD	Qualifiers
Copper	ug/L	122	121	1	
Lead	ug/L	2.1	2.1	0	

Results presented on this page are in the units indicated by the "Units" column except where an alternate unit is presented to the right of the result.

REPORT OF LABORATORY ANALYSIS

This report shall not be reproduced, except in full,
without the written consent of Pace Analytical Services, LLC.

QUALITY CONTROL DATA

Project: UNIFIED VAILSBURG SERVICES ORG
Pace Project No.: 70169763

QC Batch:	205254	Analysis Method:	EPA 200.8
QC Batch Method:	EPA 200.8	Analysis Description:	200.8 MET No Prep Drinking Water
		Laboratory:	Pace Analytical Services - Melville

Associated Lab Samples: 70169763004, 70169763005, 70169763006, 70169763007, 70169763008, 70169763009, 70169763010, 70169763011, 70169763012, 70169763013, 70169763014

METHOD BLANK: 1015289 Matrix: Water
Associated Lab Samples: 70169763004, 70169763005, 70169763006, 70169763007, 70169763008, 70169763009, 70169763010, 70169763011, 70169763012, 70169763013, 70169763014

Parameter	Units	Blank Result	Reporting Limit	Analyzed	Qualifiers
Copper	ug/L	<2.0	2.0	04/23/21 13:22	
Lead	ug/L	<1.0	1.0	04/23/21 13:22	

LABORATORY CONTROL SAMPLE: 1015290

Parameter	Units	Spike Conc.	LCS Result	LCS % Rec	% Rec Limits	Qualifiers
Copper	ug/L	50	46.1	92	85-115	
Lead	ug/L	50	49.0	98	85-115	

MATRIX SPIKE SAMPLE: 1015292

Parameter	Units	70169763004 Result	Spike Conc.	MS Result	MS % Rec	% Rec Limits	Qualifiers
Copper	ug/L	9.1	50	61.6	105	70-130	
Lead	ug/L	<1.0	50	55.0	110	70-130	

MATRIX SPIKE SAMPLE: 1015294

Parameter	Units	70169763014 Result	Spike Conc.	MS Result	MS % Rec	% Rec Limits	Qualifiers
Copper	ug/L	15.9	50	58.0	84	70-130	
Lead	ug/L	<1.0	50	44.0	87	70-130	

SAMPLE DUPLICATE: 1015291

Parameter	Units	70169763004 Result	Dup Result	RPD	Qualifiers
Copper	ug/L	9.1	9.1	0	
Lead	ug/L	<1.0	<1.0		

SAMPLE DUPLICATE: 1015293

Parameter	Units	70169763014 Result	Dup Result	RPD	Qualifiers
Copper	ug/L	15.9	15.5	3	

Results presented on this page are in the units indicated by the "Units" column except where an alternate unit is presented to the right of the result.

REPORT OF LABORATORY ANALYSIS

This report shall not be reproduced, except in full,
without the written consent of Pace Analytical Services, LLC.

QUALITY CONTROL DATA

Project: UNIFIED VAILSBURG SERVICES ORG
Pace Project No.: 70169763

SAMPLE DUPLICATE: 1015293

Parameter	Units	70169763014 Result	Dup Result	RPD	Qualifiers
Lead	ug/L	<1.0	<1.0		

Results presented on this page are in the units indicated by the "Units" column except where an alternate unit is presented to the right of the result.

REPORT OF LABORATORY ANALYSIS

This report shall not be reproduced, except in full,
without the written consent of Pace Analytical Services, LLC.

QUALIFIERS

Project: UNIFIED VAILSBURG SERVICES ORG
Pace Project No.: 70169763

DEFINITIONS

DF - Dilution Factor, if reported, represents the factor applied to the reported data due to dilution of the sample aliquot.
ND - Not Detected at or above adjusted reporting limit.
TNTC - Too Numerous To Count
J - Estimated concentration above the adjusted method detection limit and below the adjusted reporting limit.
MDL - Adjusted Method Detection Limit.
PQL - Practical Quantitation Limit.
RL - Reporting Limit - The lowest concentration value that meets project requirements for quantitative data with known precision and bias for a specific analyte in a specific matrix.
S - Surrogate
1,2-Diphenylhydrazine decomposes to and cannot be separated from Azobenzene using Method 8270. The result for each analyte is a combined concentration.
Consistent with EPA guidelines, unrounded data are displayed and have been used to calculate % recovery and RPD values.
LCS(D) - Laboratory Control Sample (Duplicate)
MS(D) - Matrix Spike (Duplicate)
DUP - Sample Duplicate
RPD - Relative Percent Difference
NC - Not Calculable.
SG - Silica Gel - Clean-Up
U - Indicates the compound was analyzed for, but not detected.
N-Nitrosodiphenylamine decomposes and cannot be separated from Diphenylamine using Method 8270. The result reported for each analyte is a combined concentration.
Pace Analytical is TNI accredited. Contact your Pace PM for the current list of accredited analytes.
TNI - The NELAC Institute.

SAMPLE QUALIFIERS

Sample: 70169763001
[1] 6 PALM STREET, NEWARK, NJ
Sample: 70169763002
[1] 6 PALM STREET, NEWARK, NJ
Sample: 70169763003
[1] 6 PALM STREET, NEWARK, NJ
Sample: 70169763004
[1] 6 PALM STREET, NEWARK, NJ
Sample: 70169763005
[1] 6 PALM STREET, NEWARK, NJ
Sample: 70169763006
[1] 6 PALM STREET, NEWARK, NJ
Sample: 70169763007
[1] 6 PALM STREET, NEWARK, NJ
Sample: 70169763008
[1] 6 PALM STREET, NEWARK, NJ
Sample: 70169763009
[1] 6 PALM STREET, NEWARK, NJ

REPORT OF LABORATORY ANALYSIS

This report shall not be reproduced, except in full,
without the written consent of Pace Analytical Services, LLC.

QUALIFIERS

Project: UNIFIED VAILSBURG SERVICES ORG
Pace Project No.: 70169763

SAMPLE QUALIFIERS

Sample: 70169763010
[1] 6 PALM STREET, NEWARK, NJ
Sample: 70169763011
[1] 6 PALM STREET, NEWARK, NJ
Sample: 70169763012
[1] 6 PALM STREET, NEWARK, NJ
Sample: 70169763013
[1] 6 PALM STREET, NEWARK, NJ
Sample: 70169763014
[1] 6 PALM STREET, NEWARK, NJ

ANALYTE QUALIFIERS

M1 Matrix spike recovery exceeded QC limits. Batch accepted based on laboratory control sample (LCS) recovery.

REPORT OF LABORATORY ANALYSIS

This report shall not be reproduced, except in full,
without the written consent of Pace Analytical Services, LLC.

QUALITY CONTROL DATA CROSS REFERENCE TABLE

Project: UNIFIED VAILSBURG SERVICES ORG
Pace Project No.: 70169763

Lab ID	Sample ID	QC Batch Method	QC Batch	Analytical Method	Analytical Batch
70169763001	1-OUTLET 2	EPA 200.8	205246		
70169763002	2-OUTLET 3	EPA 200.8	205246		
70169763003	3-OUTLET 4	EPA 200.8	205246		
70169763004	4-OUTLET 5	EPA 200.8	205254		
70169763005	5-OUTLET 7	EPA 200.8	205254		
70169763006	6-WATER FOUNTAIN 1	EPA 200.8	205254		
70169763007	7-WATER FOUNTAIN 2	EPA 200.8	205254		
70169763008	8- OUTLET 8	EPA 200.8	205254		
70169763009	9- WATER FOUNTAIN 3	EPA 200.8	205254		
70169763010	10- OUTLET 10	EPA 200.8	205254		
70169763011	11- OUTLET 12	EPA 200.8	205254		
70169763012	12- OUTLET 17	EPA 200.8	205254		
70169763013	13-OUTLET 14	EPA 200.8	205254		
70169763014	14-OUTLET 19	EPA 200.8	205254		

REPORT OF LABORATORY ANALYSIS

This report shall not be reproduced, except in full,
without the written consent of Pace Analytical Services, LLC.



CHAIN-OF-CUSTODY / Analytical Request Doc

WO#: 70169763



70169763

Section A
 Required Client Information:
 Company: OSWALD ENVIRONMENTAL
 Project Name: FOR MARIANNE BOARD
 Address: Suite 102 Torrance NS 07512
 City: TORRANCE
 State: CA
 Zip: 90503
 Project Number: 92B-785-0914
 Project Name: United Nailsburg Services Organization
 Project Address: 6 Palm Street Newark NJ

Section B
 Required Project Information:
 Report To: OSWALD ENVIRONMENTAL
 Copy To: OSWALD ENVIRONMENTAL
 Purchase Order No.: NS 07512
 Project Name: United Nailsburg Services Organization
 Project Address: 6 Palm Street Newark NJ

Section C
 Invoice Information:
 Attention: S.A.M.E.
 Company Name: S.A.M.E.
 Address: 6 Palm Street Newark NJ
 City: Newark
 State: NJ
 Zip: 07102

Section D
 Required Client Information:
 Matrix Code: DW
 Matrix Code: WT
 Matrix Code: WW
 Matrix Code: P
 Matrix Code: SL
 Matrix Code: OL
 Matrix Code: WP
 Matrix Code: AR
 Matrix Code: TS
 Matrix Code: OT
 Matrix Code: Other

Section D Required Client Information	Matrix Code (see valid codes to left)	Sample Type (G-GRAB C-COMP)	Collected		Sample Temp at Collection	# of Containers	Preservatives	Y/N	Requested Analysis: Filtered (Y/N)	Temp in C	Received on	Custody Sealed Cooler (Y/N)	Samples Intact (Y/N)
			Composite Start	Composite End/Grab									
1-Outlet 2	DW G	G	4-16-21	2 pm		1	Unpreserved						
2-Outlet 3													
3-Outlet 4													
4-Outlet 5													
5-Outlet 7													
6-Water fountain 1													
7-Water fountain 2													
8-Outlet 8													
9-Water fountain 3													
10-Outlet 10													
11-Outlet 12													
12-Outlet 17													



CHAIN-OF-CUSTODY / Analytical Request Document

The Chain-of-Custody is a LEGAL DOCUMENT. All relevant fields must be completed accurately.

Section A Required Client Information: **Company Name:** SAME
Address: [Blank]
City/State: [Blank]

Section B Required Project Information: **Project Name:** Vailsburg Services Organization
Project Number: [Blank]

Section C Invoice Information: **Report To:** [Blank]
Copy To: [Blank]

Section D Required Client Information: **Matrix Code:** DW (Drinking Water)
Sample ID: 13-Outlet-14, 14-Outlet-19
Sample IDs MUST BE UNIQUE

Page: 2 of 2
2054209

REGULATORY AGENCY:
 NPDES GROUND WATER DRINKING WATER
 UST RCRA OTHER
Site Location: 6 Palm St
STATE: New Jersey

Section D Required Client Information	Matrix Code Drinking Water Waste Water Product Solid Oil Wipe Air Tissue Other	COLLECTED		SAMPLE TEMP AT COLLECTION	# OF CONTAINERS	Preservatives Unpreserved H ₂ O ₂ HNO ₃ HCl NaOH Na ₂ S ₂ O ₈ Methanol Other	Analysis Test #	Requested Analysis Filtered (Y/N)	Face Project No./ Lab I.D.
		COMPOSITE START	COMPOSITE END/GRAB						
13-Outlet-14	DW	4/16/21	2pm	↓	1	✓	✓	Lead + Copper	
14-Outlet-19	DW	↓	↓	↓	1	✓	✓		

ADDITIONAL COMMENTS: [Blank]

RELINQUISHED BY / AFFILIATION: [Signature] DATE: 4-16-21 TIME: 5pm

ACCEPTED BY / AFFILIATION: [Signature] DATE: 4/19/21 TIME: 1900

SAMPLE CONDITIONS: Received on: [Blank] Temp in °C: [Blank]
 Sealed Cooler (Y/N): [Blank] Custody (Y/N): [Blank]

SAMPLER NAME AND SIGNATURE: [Signature] DATE SIGNED (MM/DD/YYYY): 4-16-21



Sample Containment

Client Name: MENDELL

Project

WO#: 70169763

PH: KMM

Due Date: 05/04/21

CLIENT: MEC

Courier: Fed Ex UPS USPS Client Commercial Pace Other

Tracking #: _____ Custody Seal on Cooler/Box Present: Yes No

Seals intact: Yes No Packing Material: Bubble Wrap Bubble Bags Ziploc None Other

Thermometer Used: TH091 Correction Factor: +0.0 Cooler Temperature(°C): 4.0 Cooler Temperature Corrected(°C): 4.0

Temperature Blank Present: Yes No

Type of Ice: Wet Blue None

Samples on ice, cooling process has begun

Date/Time 5035A kits placed in freezer _____

Temp should be above freezing to 6.0°C
USDA Regulated Soil (N/A, water sample)

Date and Initials of person examining contents: MSG/19/21

Did samples originate in a quarantine zone within the United States: AL, AR, CA, FL, GA, ID, LA, MS, NC, NM, NY, OK, OR, SC, TN, TX, or VA (check map)? Yes No

Did samples originate from a foreign source including Hawaii and Puerto Rico)? Yes No

If Yes to either question, fill out a Regulated Soil Checklist (F-LI-C-010) and include with SCUR/COC paperwork.

				COMMENTS:
Chain of Custody Present:	<input checked="" type="checkbox"/> Yes	<input type="checkbox"/> No		1.
Chain of Custody Filled Out:	<input checked="" type="checkbox"/> Yes	<input type="checkbox"/> No		2.
Chain of Custody Relinquished:	<input checked="" type="checkbox"/> Yes	<input type="checkbox"/> No		3.
Sampler Name & Signature on COC:	<input checked="" type="checkbox"/> Yes	<input type="checkbox"/> No	<input type="checkbox"/> N/A	4.
Samples Arrived within Hold Time:	<input checked="" type="checkbox"/> Yes	<input type="checkbox"/> No		5.
Short Hold Time Analysis (<72hr):	<input type="checkbox"/> Yes	<input checked="" type="checkbox"/> No		6.
Rush Turn Around Time Requested:	<input type="checkbox"/> Yes	<input checked="" type="checkbox"/> No		7.
Sufficient Volume: (Triple volume provided for)	<input checked="" type="checkbox"/> Yes	<input type="checkbox"/> No		8.
Correct Containers Used:	<input checked="" type="checkbox"/> Yes	<input type="checkbox"/> No		9.
-Pace Containers Used:	<input checked="" type="checkbox"/> Yes	<input type="checkbox"/> No		10.
Containers Intact:	<input checked="" type="checkbox"/> Yes	<input type="checkbox"/> No		11.
Filtered volume received for Dissolved tests	<input type="checkbox"/> Yes	<input type="checkbox"/> No	<input checked="" type="checkbox"/> N/A	Note if sediment is visible in the dissolved container.
Sample Labels match COC:	<input checked="" type="checkbox"/> Yes	<input type="checkbox"/> No		12.
-Includes date/time/ID, Matrix: <u>SL/W/OIL</u>				
All containers needing preservation have been checked?	<input checked="" type="checkbox"/> Yes	<input type="checkbox"/> No	<input type="checkbox"/> N/A	13.
pH paper Lot # <u>HC04/002</u>				
All containers needing preservation are found to be in compliance with method recommendation? (HNO ₃ , H ₂ SO ₄ , HCl, NaOH>9 Sulfide, NaOH>12 Cyanide)	<input checked="" type="checkbox"/> Yes	<input type="checkbox"/> No	<input type="checkbox"/> N/A	Sample #
Exceptions: VOA, Coliform, TOC/DOC, Oil and Grease, DRO/8015 (water).				
Per Method, VOA pH is checked after analysis				
Samples checked for dechlorination:	<input type="checkbox"/> Yes	<input type="checkbox"/> No	<input checked="" type="checkbox"/> N/A	14.
KI starch test strips Lot #				
Residual chlorine strips Lot #				
SM 4500 CN samples checked for sulfide?	<input type="checkbox"/> Yes	<input type="checkbox"/> No	<input checked="" type="checkbox"/> N/A	15.
Lead Acetate Strips Lot #				
Headspace in VOA Vials (>6mm):	<input type="checkbox"/> Yes	<input type="checkbox"/> No	<input checked="" type="checkbox"/> N/A	16.
Trip Blank Present:	<input type="checkbox"/> Yes	<input type="checkbox"/> No	<input checked="" type="checkbox"/> N/A	17.
Trip Blank Custody Seals Present	<input type="checkbox"/> Yes	<input type="checkbox"/> No	<input checked="" type="checkbox"/> N/A	
Pace Trip Blank Lot # (if applicable): _____				

Field Data Required? Y / N

Client Notification/ Resolution:

Person Contacted: _____

Comments/ Resolution: _____

Date/Time: _____

Attachment C - Drinking Water Outlet Inventory

(Complete for each school)

Name of School: UNIFIED VALSBOURG SERVICES Address: 1033 SOUTH ORANGE AVE
ORANJURIZAN NEWARK, NJ.

Grade Levels: _____ Year School Constructed: _____ Renovated/Adds: _____

Individual school project officer Name/Signature: _____

Date Completed: _____

#	Type	Location	Code	Operational ² (Y/N)	Signs of Corrosion ³ (Y/N)	Filter ⁴ (Y/N)	Brass Fittings, Faucets or valves? (Y/N)	Aerator/ Screen (Y/N)	Motion Activated (Y/N)	Chiller (Y/N)	Water Cooler		Co
											Make	Model	
1	IWF	ROOM 104		Y	N	N	N	Y	N	N			
2	"	" 103											
3	"	RM 104 BATH											
4	FP	KITCHEN											
5	IWF	NURSE											
6	"	STU CLOS.											
7	"	RM 103 BATH											
8	"	" 101 "											
9	"	DECP BATH											
10	"	RM 102 BATH											
11	"	HOSE B/B											

IWF INDOOR WATER FAUCET, W/F - WATER FOUNTAIN, FP FOOD PRER.

¹ Number outlets starting at the closest outlet to the Point of Entry (POE).
² Document if permanently or temporarily out of service on the Attachment B- Plumbing Profile.
³ Signs of corrosion detected, such as but not limited to frequent leaks, rust-colored water, or stained fixtures, dishes, or laundry.
⁴ Document on Attachment D- Filter Inventory.

Attachment C - Drinking Water Outlet Inventory

(Complete for each school)

Name of School: UNIFIED VALSBOURG SERVICES Address: 1033 SOUTH ORANGE AVE
ORAN, NJ 07071 NEWARK, NJ

Grade Levels: _____ Year School Constructed: _____ Renovated/Adds: _____

Individual school project officer Name/Signature: _____

Date Completed: _____

#	Type	Location	Code	Operational ² (Y/N)	Signs of Corrosion ³ (Y/N)	Filter ⁴ (Y/N)	Brass Fittings, Raucets or valves? (Y/N)	Aerator/ Screen (Y/N)	Motion Activated (Y/N)	Chiller (Y/N)	Water Cooler		Co
											Make	Model	
12	IWF	ROOM 102		Y	N	N	N	Y	N	N			
13	"	" 101											
14	"	2FL WDM DM											
15	"	" " "											
16	"	2FL MDS DM											
17	"	" " "											
18	"	2FL JAN CL.											
19	FP	2FL WATER						Y					
F1	WF	ROOM 103						N		Y			
F2	"	RECEPTION						N		Y			
F3	"	ROOM 101		Y	Y	Y	Y	Y	Y	Y			

IWF INDOOR WATER FAUCET, WF- WATER FOUNTAIN, FP FOOD PREP.

¹ Number outlets starting at the closest outlet to the Point of Entry (POE).
² Document if permanently or temporarily out of service on the Attachment B- Plumbing Profile.
³ Signs of corrosion detected, such as but not limited to frequent leaks, rust-colored water, or stained fixtures, dishes, or laundry.
⁴ Document on Attachment D- Filter Inventory.

Attachment C - Drinking Water Outlet Inventory

(Complete for each school)

Name of School: UNION VALLEBURG SERVICES ORGANIZATION Address: 1033 SOUTH ORANGE AVE

Grade Levels: _____ Year School Constructed: _____ Renovated/Additions: _____

Individual school project officer Name/Signature: _____ Date Completed: _____

# ¹	Type	Location	Code	Operational ² (Y/N)	Signs of Corrosion ³ (Y/N)	Filter ⁴ (Y/N)	Brass Fittings, Faucets or valves? (Y/N)	Aerator/Screen (Y/N)	Motion Activated (Y/N)	Chiller (Y/N)	Water Cooler		Co
											Make	Model	
F4	WF	ZFL HALL		NO	N	N	N	N	N				

¹ Number outlets starting at the closest outlet to the Point of Entry (POE).
² Document if permanently or temporarily out of service on the Attachment B- Plumbing Profile.
³ Signs of corrosion detected, such as but not limited to frequent leaks, rust-colored water, or stained fixtures, dishes, or laundry.
⁴ Document on Attachment D- Filter Inventory.

Attachment D - Filter Inventory (Complete for each school)

Name of School: UNIFIED VAHSBURG SERVICES Grade Levels: _____

Address: 1033 SOUTH ORANGE AVE, NEWARK NJ

Individual School Project Officer Signature: _____ Date: _____

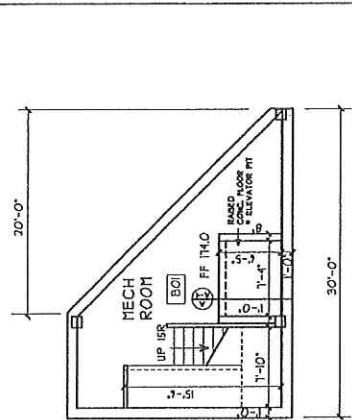
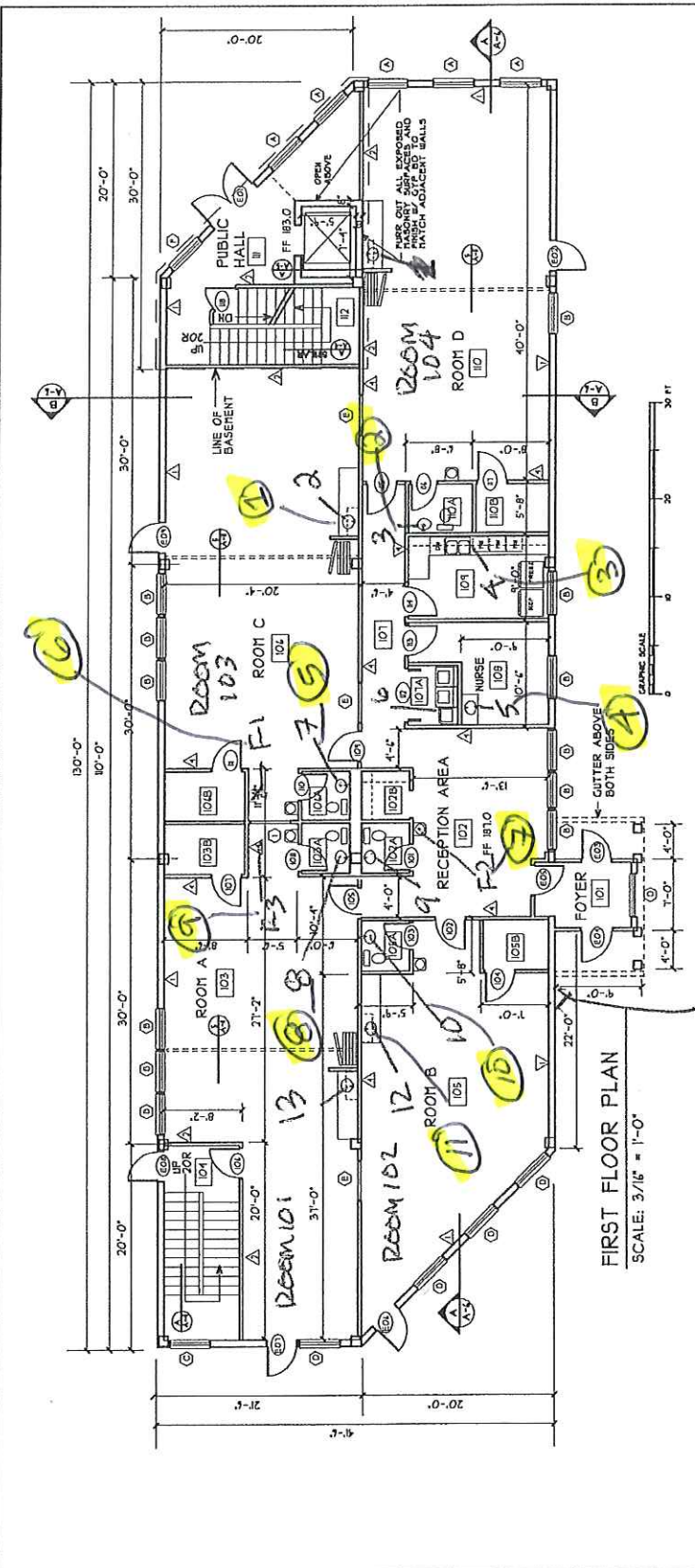
Sample Location / Code	Brand	Type (Make & Model)	Date Installed or Replaced	Replacement Frequency	NSF Certified for Lead Reduction Y/N
		NO FILTERS			

REVISIONS	NO.	DATE	BY	REASON
	1			ISSUED FOR PERMITS
	2			REVISED FOR OWNER'S APPROVAL

FILE NAME: A19-A50A.CC	CHECKED BY: CFS	DATE: 12.14.13
SCALE: AS NOTED	DESIGNED BY: JLT	

PROPOSED CONDITIONS:
 MAXED USE BUILDING
 1033 SOUTH ORANGE AVENUE, NEWARK NJ
 FIRST FLOOR PLAN
 SECOND FLOOR PLAN

SINCOS ASSOCIATES
 ARCHITECTS/PLANNERS
 WESTFIELD, NEW JERSEY 07090
 TEL. NO. 908-222-4100
 FAX. NO. 908-222-4100
 PROJECT NO. 12-141
A-1
 SHEET 6 OF 41



BASEMENT PLAN
 SCALE: 3/16" = 1'-0"

O = SAMPLE LOCATION

SYMBOL LEGEND	
ROOM NUMBERS	(101)
NEW DOORS	(D)
NEW WINDOWS	(W)
BUILDING SECTIONS	(S)
DETAIL SECTIONS	(C)
DETAIL ELEVATIONS	(E)
PARTITION TYPES	(P)
STRUCTURAL GRID	(A)

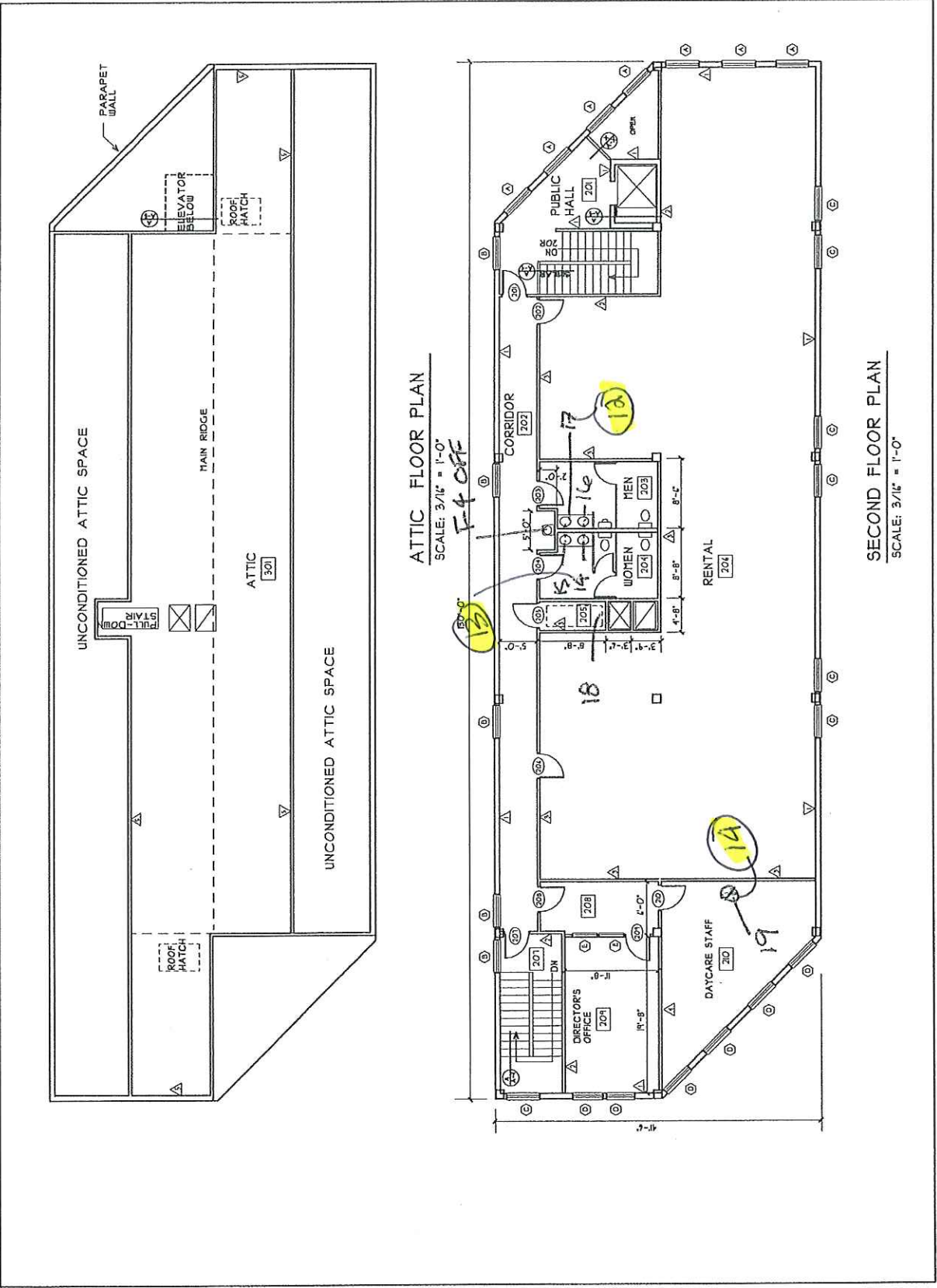
REVISIONS	NO.	DATE	DESCRIPTION
1	1	12/11/13	REVISED FOR BID
2	2	12/11/13	REVISED FOR OWNER & APPROVAL

TITLE NAME: A12-ABAC
 CHECKED BY: CFS
 SCALE: AS NOTED
 DRAWN BY: JN
 DATE: 12/11/13

UYSO
 MIXED USE BUILDING
 1033 SOUTH ORANGE AVENUE, NEWARK NJ
 PROPOSED CONDITIONS
 2ND FLOOR PLAN

GEORGE F. SMOCK ASSOCIATES
 ARCHITECTS/PLANNERS
 WESTFIELD, NEW JERSEY 07090
 TEL. NO. 908-222-4200
 FAX NO. 908-222-4203

PROJECT NO. 12-141
A-2
 SHEET 7 OF 41



ATTIC FLOOR PLAN
 SCALE: 3/16" = 1'-0"
 F-4 OFF

SECOND FLOOR PLAN
 SCALE: 3/16" = 1'-0"