



---

## MANDELL ENVIRONMENTAL CONSULTING

---

409 MINNISINK ROAD • SUITE 102 • TOTOWA, NJ 07512 • (973) 785-7574 • FAX (973) 785-0561

### Limited Water Sampling Report

Project Name: Unified Vailsburg Services Organization

Project Location: 179 Smith Street, Newark, NJ

Date of Sampling: April 15, 2021

Limited water sampling was performed by Mandell Environmental Consulting at Unified Vailsburg Services Organization, 179 Smith Street, Newark, NJ. Water samples were collected from the kitchen sink faucet, water fountain, and water cooler used by the child care center. Samples were also collected from 50% of the other indoor water faucets utilized by the child care. The samples were collected prior to water being used in the building for a minimum of 8 hours and not longer than 48 hours. The samples were collected in 250 milliliter (ml) containers accordance with New Jersey Regulations

The samples collected were submitted for analysis to Pace Analytical, 575 Broad Hollow Road, Melville, NY 11747, certification # NY158. Samples were analyzed by Graphite Furnace AA, EPA 200.9. The following table contains the results of the sampling. The maximum contaminant level (MCL) for lead in drinking water is 15 ug/L and copper 1,300 ug/L. (Laboratory Results and sampling forms Attached).

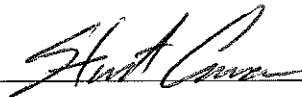
Sample Date 04/15/2021

Sample Number	Source	Results Lead	Results Copper	Units	Pos/Neg
S-1	Outlet 2	2.0	158	Ug/L	Neg.
S-2	Outlet 3	<1.0	192	ug/L	Neg.
S-3	Outlet 6	<1.0	176	ug/L	Neg.
S-4	Outlet 4	1.6	154	ug/L	Neg.
S-5	Outlet 7	2.9	138	ug/L	Neg.
S-6	Outlet 8	<1.0	248	ug/L	Neg.
S-7	Outlet 22	7.9	326	ug/L	Neg.
S-8	Outlet 12	<1.0	134	ug/L	Neg.
S-9	Outlet 13	<1.0	135	ug/L	Neg.
S-10	Outlet 14	1.1	247	ug/L	Neg.
S-11	Outlet 17	<1.0	100	ug/L	Neg.
S-12	Outlet 20	<1.0	130	ug/L	Neg.
S-13	Water Fountain	<1.0	221	ug/L	Neg.
S-14	Water Cooler	<1.0	<2.0	ug/L	Neg.

The laboratory results show that none of the samples were found to exceed the lead in drinking water action level of 15 ug/L and copper 1,300 ug/L. Sampling forms and diagram are attached.

Sampling Performed by: Stuart Casciano  
NJ Lead Inspector/Risk Assessor  
Mandell Environmental Consulting  
409 Minnisink Road, Suite 102  
Totowa, NJ 07512

Signed: \_\_\_\_\_



Date: 5-6-2021

May 03, 2021

Stuart Casciano  
Mandell Environmental Consulting  
409 Minnisink Road  
Suite 102  
Totowa, NJ 07512

RE: Project: UVSO-179 SMITH STREET 4/15  
Pace Project No.: 70170673

Dear Stuart Casciano:

Enclosed are the analytical results for sample(s) received by the laboratory on April 26, 2021. The results relate only to the samples included in this report. Results reported herein conform to the applicable TNI/NELAC Standards and the laboratory's Quality Manual, where applicable, unless otherwise noted in the body of the report.

The test results provided in this final report were generated by each of the following laboratories within the Pace Network:

- Pace Analytical Services - Melville

If you have any questions concerning this report, please feel free to contact me.

Sincerely,



Kimberley M. Mack  
kimberley.mack@pacelabs.com  
(631)694-3040  
Project Manager

Enclosures



## REPORT OF LABORATORY ANALYSIS

This report shall not be reproduced, except in full,  
without the written consent of Pace Analytical Services, LLC.

## CERTIFICATIONS

Project: UVSO-179 SMITH STREET 4/15

Pace Project No.: 70170673

---

### **Pace Analytical Services Long Island**

Delaware Certification # NY10478

Virginia Certification # 460302

Delaware Certification # NY10478

575 Broad Hollow Rd, Melville, NY 11747

New York Certification #: 10478 Primary Accrediting Body

New Jersey Certification #: NY158

Pennsylvania Certification #: 68-00350

Connecticut Certification #: PH-0435

Maryland Certification #: 208

Rhode Island Certification #: LAO00340

Massachusetts Certification #: M-NY026

New Hampshire Certification #: 2987

## REPORT OF LABORATORY ANALYSIS

This report shall not be reproduced, except in full,  
without the written consent of Pace Analytical Services, LLC.

### ANALYTICAL RESULTS

Project: UVSO-179 SMITH STREET 4/15  
Pace Project No.: 70170673

Sample: S-1 OUTLET 2		Lab ID: 70170673001	Collected: 04/15/21 00:00	Received: 04/26/21 18:27	Matrix: Drinking Water			
Parameters	Results	Units	Report Limit	DF	Prepared	Analyzed	CAS No.	Qual
<b>200.8 MET ICPMS Drinking Water</b>		Analytical Method: EPA 200.8 Pace Analytical Services - Melville						
Copper	158	ug/L	2.0	1		05/01/21 13:31	7440-50-8	
Lead	2.0	ug/L	1.0	1		05/01/21 13:31	7439-92-1	

### REPORT OF LABORATORY ANALYSIS

This report shall not be reproduced, except in full,  
without the written consent of Pace Analytical Services, LLC.

**ANALYTICAL RESULTS**

Project: UVSO-179 SMITH STREET 4/15  
Pace Project No.: 70170673

Sample: S-2 OUTLET 3		Lab ID: 70170673002	Collected: 04/15/21 00:00	Received: 04/26/21 18:27	Matrix: Drinking Water			
Parameters	Results	Units	Report Limit	DF	Prepared	Analyzed	CAS No.	Qual
<b>200.8 MET ICPMS Drinking Water</b>		Analytical Method: EPA 200.8 Pace Analytical Services - Melville						
Copper	192	ug/L	2.0	1		05/03/21 10:51	7440-50-8	
Lead	<1.0	ug/L	1.0	1		05/03/21 10:51	7439-92-1	

**REPORT OF LABORATORY ANALYSIS**

This report shall not be reproduced, except in full,  
without the written consent of Pace Analytical Services, LLC.

### ANALYTICAL RESULTS

Project: UVSO-179 SMITH STREET 4/15  
Pace Project No.: 70170673

Sample: S-3 OUTLET 6		Lab ID: 70170673003	Collected: 04/15/21 00:00	Received: 04/26/21 18:27	Matrix: Drinking Water			
Parameters	Results	Units	Report Limit	DF	Prepared	Analyzed	CAS No.	Qual
<b>200.8 MET ICPMS Drinking Water</b>		Analytical Method: EPA 200.8 Pace Analytical Services - Melville						
Copper	176	ug/L	2.0	1		05/03/21 10:52	7440-50-8	
Lead	<1.0	ug/L	1.0	1		05/03/21 10:52	7439-92-1	

### REPORT OF LABORATORY ANALYSIS

This report shall not be reproduced, except in full,  
without the written consent of Pace Analytical Services, LLC.

### ANALYTICAL RESULTS

Project: UVSO-179 SMITH STREET 4/15  
Pace Project No.: 70170673

Sample: S-4 OUTLET 4		Lab ID: 70170673004	Collected: 04/15/21 00:00	Received: 04/26/21 18:27	Matrix: Drinking Water			
Parameters	Results	Units	Report Limit	DF	Prepared	Analyzed	CAS No.:	Qual
<b>200.8 MET ICPMS Drinking Water</b>		Analytical Method: EPA 200.8 Pace Analytical Services - Melville						
Copper	<b>154</b>	ug/L	2.0	1		05/03/21 10:53	7440-50-8	
Lead	<b>1.6</b>	ug/L	1.0	1		05/03/21 10:53	7439-92-1	

### REPORT OF LABORATORY ANALYSIS

This report shall not be reproduced, except in full,  
without the written consent of Pace Analytical Services, LLC.



### ANALYTICAL RESULTS

Project: UVSO-179 SMITH STREET 4/15

Pace Project No.: 70170673

Sample: S-5 OUTLET 7		Lab ID: 70170673005	Collected: 04/15/21 00:00	Received: 04/26/21 18:27	Matrix: Drinking Water			
Parameters	Results	Units	Report Limit	DF	Prepared	Analyzed	CAS No.	Qual
<b>200.8 MET ICPMS Drinking Water</b>		Analytical Method: EPA 200.8 Pace Analytical Services - Melville						
Copper	138	ug/L	2.0	1		05/03/21 10:54	7440-50-8	
Lead	2.9	ug/L	1.0	1		05/03/21 10:54	7439-92-1	

### REPORT OF LABORATORY ANALYSIS

This report shall not be reproduced, except in full,  
without the written consent of Pace Analytical Services, LLC.

### ANALYTICAL RESULTS

Project: UVSO-179 SMITH STREET 4/15

Pace Project No.: 70170673

Sample: S-6 OUTLET 8		Lab ID: 70170673006	Collected: 04/15/21 00:00	Received: 04/26/21 18:27	Matrix: Drinking Water			
Parameters	Results	Units	Report Limit	DF	Prepared	Analyzed	CAS No.	Qual
<b>200.8 MET ICPMS Drinking Water</b>		Analytical Method: EPA 200.8 Pace Analytical Services - Melville						
Copper	248	ug/L	2.0	1		05/03/21 10:55	7440-50-8	
Lead	<1.0	ug/L	1.0	1		05/03/21 10:55	7439-92-1	

### REPORT OF LABORATORY ANALYSIS

This report shall not be reproduced, except in full,  
without the written consent of Pace Analytical Services, L.L.C.

### ANALYTICAL RESULTS

Project: UVSO-179 SMITH STREET 4/15

Pace Project No.: 70170673

Sample: S-7 OUTLET 13	Lab ID: 70170673007	Collected: 04/15/21 00:00	Received: 04/26/21 18:27	Matrix: Drinking Water				
Parameters	Results	Units	Report Limit	DF	Prepared	Analyzed	CAS No.	Qual
<b>200.8 MET ICPMS Drinking Water</b>	Analytical Method: EPA 200.8 Pace Analytical Services - Melville							
Copper	326	ug/L	2.0	1		05/03/21 10:56	7440-50-8	
Lead	7.9	ug/L	1.0	1		05/03/21 10:56	7439-92-1	

### REPORT OF LABORATORY ANALYSIS

This report shall not be reproduced, except in full,  
without the written consent of Pace Analytical Services, L.L.C.

### ANALYTICAL RESULTS

Project: UVSO-179 SMITH STREET 4/15  
Pace Project No.: 70170673

Sample: S-8 OUTLET 12		Lab ID: 70170673008	Collected: 04/15/21 00:00	Received: 04/26/21 18:27	Matrix: Drinking Water			
Parameters	Results	Units	Report Limit	DF	Prepared	Analyzed	CAS No.	Qual
<b>200.8 MET ICPMS Drinking Water</b>		Analytical Method: EPA 200.8 Pace Analytical Services - Melville						
Copper	134	ug/L	2.0	1		05/03/21 10:58	7440-50-8	
Lead	<1.0	ug/L	1.0	1		05/03/21 10:58	7439-92-1	

### REPORT OF LABORATORY ANALYSIS

This report shall not be reproduced, except in full,  
without the written consent of Pace Analytical Services, LLC.

### ANALYTICAL RESULTS

Project: UVSO-179 SMITH STREET 4/15  
Pace Project No.: 70170673

Sample: S-9 OUTLET 13		Lab ID: 70170673009	Collected: 04/15/21 00:00	Received: 04/26/21 18:27	Matrix: Drinking Water			
Parameters	Results	Units	Report Limit	DF	Prepared	Analyzed	CAS No.	Qual
<b>200.8 MET ICPMS Drinking Water</b>		Analytical Method: EPA 200.8 Pace Analytical Services - Melville						
Copper	135	ug/L	2.0	1		05/03/21 10:59	7440-50-8	
Lead	<1.0	ug/L	1.0	1		05/03/21 10:59	7439-92-1	

### REPORT OF LABORATORY ANALYSIS

This report shall not be reproduced, except in full,  
without the written consent of Pace Analytical Services, LLC.

### ANALYTICAL RESULTS

Project: UVSO-179 SMITH STREET 4/15  
Pace Project No.: 70170673

Sample: S-10 OUTLET 14		Lab ID: 70170673010	Collected: 04/15/21 00:00	Received: 04/26/21 18:27	Matrix: Drinking Water			
Parameters	Results	Units	Report Limit	DF	Prepared	Analyzed	CAS No.	Qual
<b>200.8 MET ICPMS Drinking Water</b>		Analytical Method: EPA 200.8 Pace Analytical Services - Melville						
Copper	247	ug/L	2.0	1		05/03/21 11:00	7440-50-8	
Lead	1.1	ug/L	1.0	1		05/03/21 11:00	7439-92-1	

### REPORT OF LABORATORY ANALYSIS

This report shall not be reproduced, except in full,  
without the written consent of Pace Analytical Services, LLC.

### ANALYTICAL RESULTS

Project: UVSO-179 SMITH STREET 4/15

Pace Project No.: 70170673

Sample: S-11 OUTLET 17		Lab ID: 70170673011	Collected: 04/15/21 00:00	Received: 04/26/21 18:27	Matrix: Drinking Water			
Parameters	Results	Units	Report Limit	DF	Prepared	Analyzed	CAS No.	Qual
<b>200.8 MET ICPMS Drinking Water</b>		Analytical Method: EPA 200.8 Pace Analytical Services - Melville						
Copper	100	ug/L	2.0	1		05/03/21 11:01	7440-50-8	
Lead	<1.0	ug/L	1.0	1		05/03/21 11:01	7439-92-1	

### REPORT OF LABORATORY ANALYSIS

This report shall not be reproduced, except in full,  
without the written consent of Pace Analytical Services, LLC.

### ANALYTICAL RESULTS

Project: UVSO-179 SMITH STREET 4/15  
Pace Project No.: 70170673

Sample: S-12 OUTLET 20		Lab ID: 70170673012	Collected: 04/15/21 00:00	Received: 04/26/21 18:27	Matrix: Drinking Water			
Parameters	Results	Units	Report Limit	DF	Prepared	Analyzed	CAS No.	Qual
<b>200.8 MET ICPMS Drinking Water</b>		Analytical Method: EPA 200.8 Pace Analytical Services - Melville						
Copper	130	ug/L	2.0	1		05/03/21 11:04	7440-50-8	
Lead	<1.0	ug/L	1.0	1		05/03/21 11:04	7439-92-1	

### REPORT OF LABORATORY ANALYSIS

This report shall not be reproduced, except in full,  
without the written consent of Pace Analytical Services, LLC.



### ANALYTICAL RESULTS

Project: UVSO-179 SMITH STREET 4/15  
Pace Project No.: 70170673

Sample: S-13 WATER FOUNTAIN		Lab ID: 70170673013	Collected: 04/15/21 00:00	Received: 04/26/21 18:27	Matrix: Drinking Water			
Parameters	Results	Units	Report Limit	DF	Prepared	Analyzed	CAS No.	Qual
<b>200.8 MET ICPMS Drinking Water</b>		Analytical Method: EPA 200.8 Pace Analytical Services - Melville						
Copper	2210	ug/L	20.0	10		05/03/21 11:05	7440-50-8	
Lead	<10.0	ug/L	10.0	10		05/03/21 11:05	7439-92-1	

### REPORT OF LABORATORY ANALYSIS

This report shall not be reproduced, except in full,  
without the written consent of Pace Analytical Services, LLC.

### ANALYTICAL RESULTS

Project: UVSO-179 SMITH STREET 4/15  
Pace Project No.: 70170673

Sample: S-14 WATER COOLER		Lab ID: 70170673014	Collected: 04/15/21 00:00	Received: 04/26/21 18:27	Matrix: Drinking Water			
Parameters	Results	Units	Report Limit	DF	Prepared	Analyzed	CAS No.	Qual
<b>200.8 MET ICPMS Drinking Water</b>		Analytical Method: EPA 200.8 Pace Analytical Services - Melville						
Copper	<2.0	ug/L	2.0	1		05/03/21 11:06	7440-50-8	
Lead	<1.0	ug/L	1.0	1		05/03/21 11:06	7439-92-1	

### REPORT OF LABORATORY ANALYSIS

This report shall not be reproduced, except in full,  
without the written consent of Pace Analytical Services, LLC.

### QUALITY CONTROL DATA

Project: UVSO-179 SMITH STREET 4/15  
Pace Project No.: 70170673

QC Batch:	206542	Analysis Method:	EPA 200.8
QC Batch Method:	EPA 200.8	Analysis Description:	200.8 MET No Prep Drinking Water
		Laboratory:	Pace Analytical Services - Melville
Associated Lab Samples:	70170673001, 70170673002, 70170673003, 70170673004, 70170673005, 70170673006, 70170673007, 70170673008, 70170673009, 70170673010, 70170673011, 70170673012, 70170673013, 70170673014		

METHOD BLANK: 1024853 Matrix: Water  
Associated Lab Samples: 70170673001, 70170673002, 70170673003, 70170673004, 70170673005, 70170673006, 70170673007, 70170673008, 70170673009, 70170673010, 70170673011, 70170673012, 70170673013, 70170673014

Parameter	Units	Blank Result	Reporting Limit	Analyzed	Qualifiers
Copper	ug/L	<2.0	2.0	05/01/21 13:29	
Lead	ug/L	<1.0	1.0	05/01/21 13:29	

LABORATORY CONTROL SAMPLE: 1024854

Parameter	Units	Spike Conc.	LCS Result	LCS % Rec	% Rec Limits	Qualifiers
Copper	ug/L	50	45.5	91	85-115	
Lead	ug/L	50	47.6	95	85-115	

MATRIX SPIKE SAMPLE: 1024857

Parameter	Units	70170673001 Result	Spike Conc.	MS Result	MS % Rec	% Rec Limits	Qualifiers
Copper	ug/L	158	50	200	84	70-130	
Lead	ug/L	2.0	50	54.4	105	70-130	

MATRIX SPIKE SAMPLE: 1024859

Parameter	Units	70170673011 Result	Spike Conc.	MS Result	MS % Rec	% Rec Limits	Qualifiers
Copper	ug/L	100	50	148	95	70-130	
Lead	ug/L	<1.0	50	53.8	107	70-130	

SAMPLE DUPLICATE: 1024856

Parameter	Units	70170673001 Result	Dup Result	RPD	Qualifiers
Copper	ug/L	158	158	0	
Lead	ug/L	2.0	1.9	2	

SAMPLE DUPLICATE: 1024858

Parameter	Units	70170673011 Result	Dup Result	RPD	Qualifiers
Copper	ug/L	100	100	0	

Results presented on this page are in the units indicated by the "Units" column except where an alternate unit is presented to the right of the result.

### REPORT OF LABORATORY ANALYSIS

This report shall not be reproduced, except in full,  
without the written consent of Pace Analytical Services, LLC.

**QUALITY CONTROL DATA**

Project: UVSO-179 SMITH STREET 4/15  
Pace Project No.: 70170673

SAMPLE DUPLICATE: 1024858

Parameter	Units	70170673011 Result	Dup Result	RPD	Qualifiers
Lead	ug/L	<1.0	<1.0		

Results presented on this page are in the units indicated by the "Units" column except where an alternate unit is presented to the right of the result.

**REPORT OF LABORATORY ANALYSIS**

This report shall not be reproduced, except in full,  
without the written consent of Pace Analytical Services, LLC.

## QUALIFIERS

Project: UVSO-179 SMITH STREET 4/15  
Pace Project No.: 70170673

---

### DEFINITIONS

DF - Dilution Factor, if reported, represents the factor applied to the reported data due to dilution of the sample aliquot.

ND - Not Detected at or above adjusted reporting limit.

TNTC - Too Numerous To Count

J - Estimated concentration above the adjusted method detection limit and below the adjusted reporting limit.

MDL - Adjusted Method Detection Limit.

PQL - Practical Quantitation Limit.

RL - Reporting Limit - The lowest concentration value that meets project requirements for quantitative data with known precision and bias for a specific analyte in a specific matrix.

S - Surrogate

1,2-Diphenylhydrazine decomposes to and cannot be separated from Azobenzene using Method 8270. The result for each analyte is a combined concentration.

Consistent with EPA guidelines, unrounded data are displayed and have been used to calculate % recovery and RPD values.

LCS(D) - Laboratory Control Sample (Duplicate)

MS(D) - Matrix Spike (Duplicate)

DUP - Sample Duplicate

RPD - Relative Percent Difference

NC - Not Calculable.

SG - Silica Gel - Clean-Up

U - Indicates the compound was analyzed for, but not detected.

N-Nitrosodiphenylamine decomposes and cannot be separated from Diphenylamine using Method 8270. The result reported for each analyte is a combined concentration.

Pace Analytical is TNI accredited. Contact your Pace PM for the current list of accredited analytes.

TNI - The NELAC Institute.

## REPORT OF LABORATORY ANALYSIS

This report shall not be reproduced, except in full,  
without the written consent of Pace Analytical Services, LLC.

### QUALITY CONTROL DATA CROSS REFERENCE TABLE

Project: UVSO-179 SMITH STREET 4/15  
Pace Project No.: 70170673

Lab ID	Sample ID	QC Batch Method	QC Batch	Analytical Method	Analytical Batch
70170673001	S-1 OUTLET 2	EPA 200.8	206542		
70170673002	S-2 OUTLET 3	EPA 200.8	206542		
70170673003	S-3 OUTLET 6	EPA 200.8	206542		
70170673004	S-4 OUTLET 4	EPA 200.8	206542		
70170673005	S-5 OUTLET 7	EPA 200.8	206542		
70170673006	S-6 OUTLET 8	EPA 200.8	206542		
70170673007	S-7 OUTLET 13	EPA 200.8	206542		
70170673008	S-8 OUTLET 12	EPA 200.8	206542		
70170673009	S-9 OUTLET 13	EPA 200.8	206542		
70170673010	S-10 OUTLET 14	EPA 200.8	206542		
70170673011	S-11 OUTLET 17	EPA 200.8	206542		
70170673012	S-12 OUTLET 20	EPA 200.8	206542		
70170673013	S-13 WATER FOUNTAIN	EPA 200.8	206542		
70170673014	S-14 WATER COOLER	EPA 200.8	206542		

### REPORT OF LABORATORY ANALYSIS

This report shall not be reproduced, except in full,  
without the written consent of Pace Analytical Services, LLC.

WO#: 70170673

**CHAIN-OF-CUSTODY / Analytical Request Document**  
 This Chain-of-Custody is a LEGAL DOCUMENT. All relevant fields must be completed accurately.

Section C  
 Invoice Information:  
 Alignment: \_\_\_\_\_  
 Company Name: **MANDELL ENV.**  
 Address: **5 DAY**  
 State: **NY**  
 City: **NEWARK**  
 Zip: **07102**  
 Project Name: **UN30 179 SMITH ST.**  
 Project Number: **NEWARK NJ**  
 Requested Date: **5 DAY**

Section D  
 Requester/Client Information:  
 Name: **MANDELL ENV.**  
 Address: **5 DAY**  
 City: **NEWARK**  
 State: **NY**  
 Zip: **07102**  
 Project Name: **UN30 179 SMITH ST.**  
 Project Number: **NEWARK NJ**  
 Requested Date: **5 DAY**

Section E  
 Regulatory Agency:  
 NPDES  GROUND WATER  DRINKING WATER  
 UST  RCRA  OTHER   
 Site Location: \_\_\_\_\_  
 State: **NY**

Section F  
 Matrix Code:  
 DW Drinking Water  
 WW Wastewater  
 P Product  
 SL Soil/Solid  
 WP Wipes  
 AR Air  
 TS Tissue  
 OT Other

SAMPLE ID (A-Z, 0-9) Sample IDs MUST BE UNIQUE	COLLECTED		DATE	TIME	MATRIX CODE (See valid codes in 10)	SAMPLE TYPE (See GRAB or COMP)	# OF CONTAINERS	PRESERVATIVES						ANALYST'S TEST	DATE	TIME	ACCEPTED BY / AFFILIATION	DATE	TIME	SAMPLE CONDITIONS	
	COMPOSITE START	COMPOSITE END						H <sub>2</sub> O <sub>2</sub>	HNO <sub>3</sub>	HCl	NaOH	Na <sub>2</sub> S <sub>2</sub> O <sub>8</sub>	Methanol								Other
1 S-1 OUTLET 2			4-15-2020		DW	GRAB	1														
2 S-2 OUTLET 3																					
3 S-3 OUTLET 6																					
4 S-4 OUTLET 4																					
5 S-5 OUTLET 7																					
6 S-6 OUTLET 8																					
7 S-7 OUTLET 13																					
8 S-8 OUTLET 12																					
9 S-9 OUTLET 13																					
10 S-10 OUTLET 14																					
11 S-11 OUTLET 17																					
12 S-12 OUTLET 20																					

Section G  
 Analytical Information:  
 Requested Analysis Filtered (Y/N) \_\_\_\_\_  
 Residual Chlorine (Y/N) \_\_\_\_\_  
 Pace Project No./ Lab I.D. \_\_\_\_\_

Section H  
 Relinquished by / Affiliation: \_\_\_\_\_  
 Date: \_\_\_\_\_  
 Time: \_\_\_\_\_

Section I  
 Requested by / Affiliation: \_\_\_\_\_  
 Date: \_\_\_\_\_  
 Time: \_\_\_\_\_

Section J  
 Sampler Name and Signature: \_\_\_\_\_  
 Print Name of Sampler: \_\_\_\_\_  
 Signature of Sampler: \_\_\_\_\_  
 Date Signed (MM/DD/YYYY): \_\_\_\_\_  
 Date: 4-20-2021







Sample Condition Upon Receipt

WO#: 70170673

Client Name: Mandell Environmental

Project

PM: KMM

Due Date: 05/04/21

CLIENT: MEC

Courier:  Fed Ex  UPS  USPS  Client  Commercial  Pace  Other

Tracking #: \_\_\_\_\_

Custody Seal on Cooler/Box Present:  Yes  No    Seals intact:  Yes  No

Packing Material:  Bubble Wrap  Bubble Bags  Ziploc  None  Other

Thermometer Used: TH091     Correction Factor: +0.0

Cooler Temperature(°C): 3.7    Cooler Temperature Corrected(°C): 3.7

Temp should be above freezing to 6.0°C

USDA Regulated Soil (  N/A, water sample)

Date and Initials of person examining contents: HA 4/26/21 1827

Did samples originate in a quarantine zone within the United States: AL, AR, CA, FL, GA, ID, LA, MS, NC, NM, NY, OK, OR, SC, TN, TX, or VA (check map)?  Yes  No

Did samples originate from a foreign source including Hawaii and Puerto Rico)?  Yes  No

If Yes to either question, fill out a Regulated Soil Checklist [F-LI-C-010] and include with SCUR/COC paperwork.

		COMMENTS:
Chain of Custody Present:	<input checked="" type="checkbox"/> Yes <input type="checkbox"/> No	1.
Chain of Custody Filled Out:	<input checked="" type="checkbox"/> Yes <input type="checkbox"/> No	2.
Chain of Custody Relinquished:	<input checked="" type="checkbox"/> Yes <input type="checkbox"/> No	3.
Sampler Name & Signature on COC:	<input checked="" type="checkbox"/> Yes <input type="checkbox"/> No <input type="checkbox"/> N/A	4.
Samples Arrived within Hold Time:	<input checked="" type="checkbox"/> Yes <input type="checkbox"/> No	5.
Short Hold Time Analysis (<72hr):	<input type="checkbox"/> Yes <input checked="" type="checkbox"/> No	6.
Rush Turn Around Time Requested:	<input type="checkbox"/> Yes <input checked="" type="checkbox"/> No	7.
Sufficient Volume: (Triple volume provided for)	<input checked="" type="checkbox"/> Yes <input type="checkbox"/> No	8.
Correct Containers Used:	<input checked="" type="checkbox"/> Yes <input type="checkbox"/> No	9.
-Pace Containers Used:	<input checked="" type="checkbox"/> Yes <input type="checkbox"/> No	10.
Containers Intact:	<input checked="" type="checkbox"/> Yes <input type="checkbox"/> No	10.
Filtered volume received for Dissolved tests	<input type="checkbox"/> Yes <input type="checkbox"/> No <input checked="" type="checkbox"/> N/A	11. Note if sediment is visible in the dissolved container.
Sample Labels match COC:	<input checked="" type="checkbox"/> Yes <input type="checkbox"/> No	12.
-Includes date/time/ID, Matrix: <u>SL (W) OIL</u>		
All containers needing preservation have been checked?	<input checked="" type="checkbox"/> Yes <input type="checkbox"/> No <input type="checkbox"/> N/A	13. <input type="checkbox"/> HNO <sub>3</sub> <input type="checkbox"/> H <sub>2</sub> SO <sub>4</sub> <input type="checkbox"/> NaOH <input type="checkbox"/> HCl
pH paper Lot # <u>Hc 90444</u>		Sample #
All containers needing preservation are found to be in compliance with method recommendation? (HNO <sub>3</sub> , H <sub>2</sub> SO <sub>4</sub> , HCl, NaOH>9 Sulfide, NAOH>12 Cyanide)	<input checked="" type="checkbox"/> Yes <input type="checkbox"/> No <input type="checkbox"/> N/A	
Exceptions: VOA, Coliform, TOC/DOC, Oil and Grease, DRO/8015 (water).		Initial when completed:    Lot # of added preservative:    Date/Time preservative added:
Per Method, VOA pH is checked after analysis		
Samples checked for dechlorination:	<input type="checkbox"/> Yes <input type="checkbox"/> No <input checked="" type="checkbox"/> N/A	14. Positive for Res. Chlorine? Y N
KI starch test strips Lot #		
Residual chlorine strips Lot #		
SM 4500 CN samples checked for sulfide?	<input type="checkbox"/> Yes <input type="checkbox"/> No <input checked="" type="checkbox"/> N/A	15.
Lead Acetate Strips Lot #		
Headspace in VOA Vials (>6mm):	<input type="checkbox"/> Yes <input type="checkbox"/> No <input checked="" type="checkbox"/> N/A	16.
Trip Blank Present:	<input type="checkbox"/> Yes <input type="checkbox"/> No <input checked="" type="checkbox"/> N/A	17.
Trip Blank Custody Seals Present	<input type="checkbox"/> Yes <input type="checkbox"/> No <input checked="" type="checkbox"/> N/A	
Pace Trip Blank Lot # (if applicable): _____		

Client Notification/ Resolution:

Field Data Required? Y / N

Person Contacted: \_\_\_\_\_

Date/Time: \_\_\_\_\_

Comments/ Resolution: No collection takes on Chain of Samples

### Attachment C - Drinking Water Outlet Inventory (Complete for each school)

Name of School: UNIFIED VALSBOEG SERVICES ORGANIZATION Address: 179 SMITH STREET NEWARK NJ

Grade Levels: \_\_\_\_\_ Year School Constructed: \_\_\_\_\_ Renovated/Adds: \_\_\_\_\_

Individual school project officer Name/Signature: \_\_\_\_\_ Date Completed: \_\_\_\_\_

#	Type	Location	Code	Operational <sup>2</sup> (Y/N)	Signs of Corrosion <sup>3</sup> (Y/N)	Filter <sup>4</sup> (Y/N)	Brass Fittings, Faucets or valves? (Y/N)	Aerator/ Screen (Y/N)	Motion Activated (Y/N)	Chiller (Y/N)	Water Cooler		Co
											Make	Model	
1	IWF	CLASS 102		Y	N	N	N	Y	N	N			
2		"											
3		"											
4		CLASS 103											
5		"											
6		"											
7		CLASS 104											
8		"											
9		"											
10		1FL BATH											
11		CLASS 202											

IWF - INDOOR WATER FAUCET      WUF = WATER FOUNTAIN      WP = FOOD PREPARATION

<sup>1</sup> Number outlets starting at the closest outlet to the Point of Entry (POE).  
<sup>2</sup> Document if permanently or temporarily out of service on the Attachment B- Plumbing Profile.  
<sup>3</sup> Signs of corrosion detected, such as but not limited to frequent leaks, rust-colored water, or stained fixtures, dishes, or laundry.  
<sup>4</sup> Document on Attachment D- Filter Inventory.

### Attachment C - Drinking Water Outlet Inventory

(Complete for each school)

Name of School: UNIFIED VALSBOURG SERVICES ORGANIZATION Address: 179 SMITH STREET  
NEWARK NJ

Grade Levels: \_\_\_\_\_ Year School Constructed: \_\_\_\_\_ Renovated/Additions: \_\_\_\_\_

Individual school project officer Name/Signature: \_\_\_\_\_ Date Completed: \_\_\_\_\_

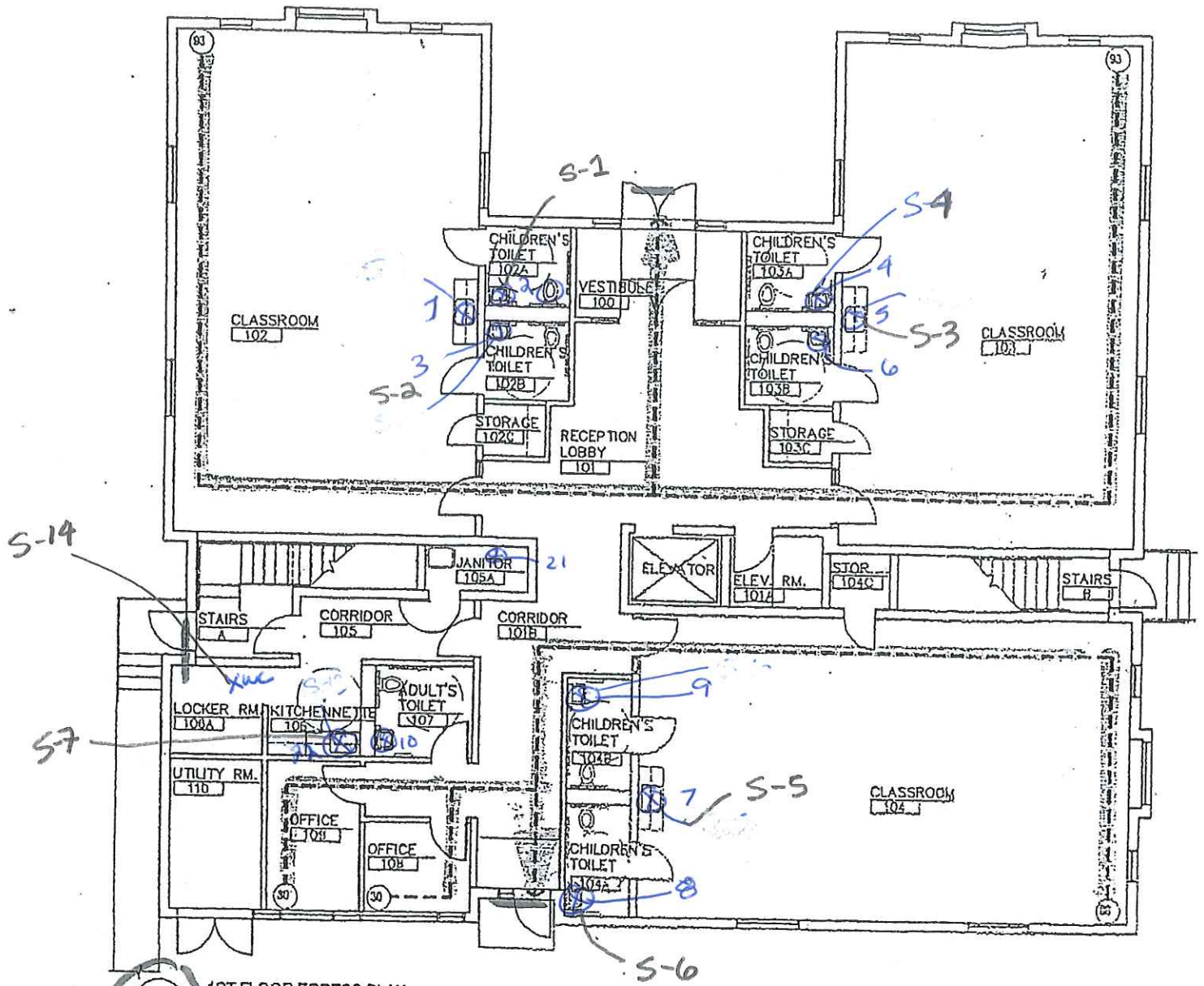
#	Type	Location	Code	Operational <sup>2</sup> (Y/N)	Signs of Corrosion <sup>3</sup> (Y/N)	Filter <sup>4</sup> (Y/N)	Brass Fittings, Faucets or valves? (Y/N)	Aerator/ Screen (Y/N)	Motion Activated (Y/N)	Chiller (Y/N)	Water Cooler		Col
											Make	Model	
12	IWF	CLASS 202		Y	N	N	N	Y	N	N			
13		"											
14		CLASS 203											
15		"											
16		"											
17		CLASS 201											
18		"											
19		"											
20		2FL BATH											
21	Y	1FL JAN CLOS						Y					
FL	WF	2FL HALL						N	Y				

IWF - INDOOR WATER FAUCET      WF = WATER FOUNTAIN      WP = FOOD PREPARATION

<sup>1</sup> Number outlets starting at the closest outlet to the Point of Entry (POE).  
<sup>2</sup> Document if permanently or temporarily out of service on the Attachment B- Plumbing Profile.  
<sup>3</sup> Signs of corrosion detected, such as but not limited to frequent leaks, rust-colored water, or stained fixtures, dishes, or laundry.  
<sup>4</sup> Document on Attachment D- Filter Inventory.



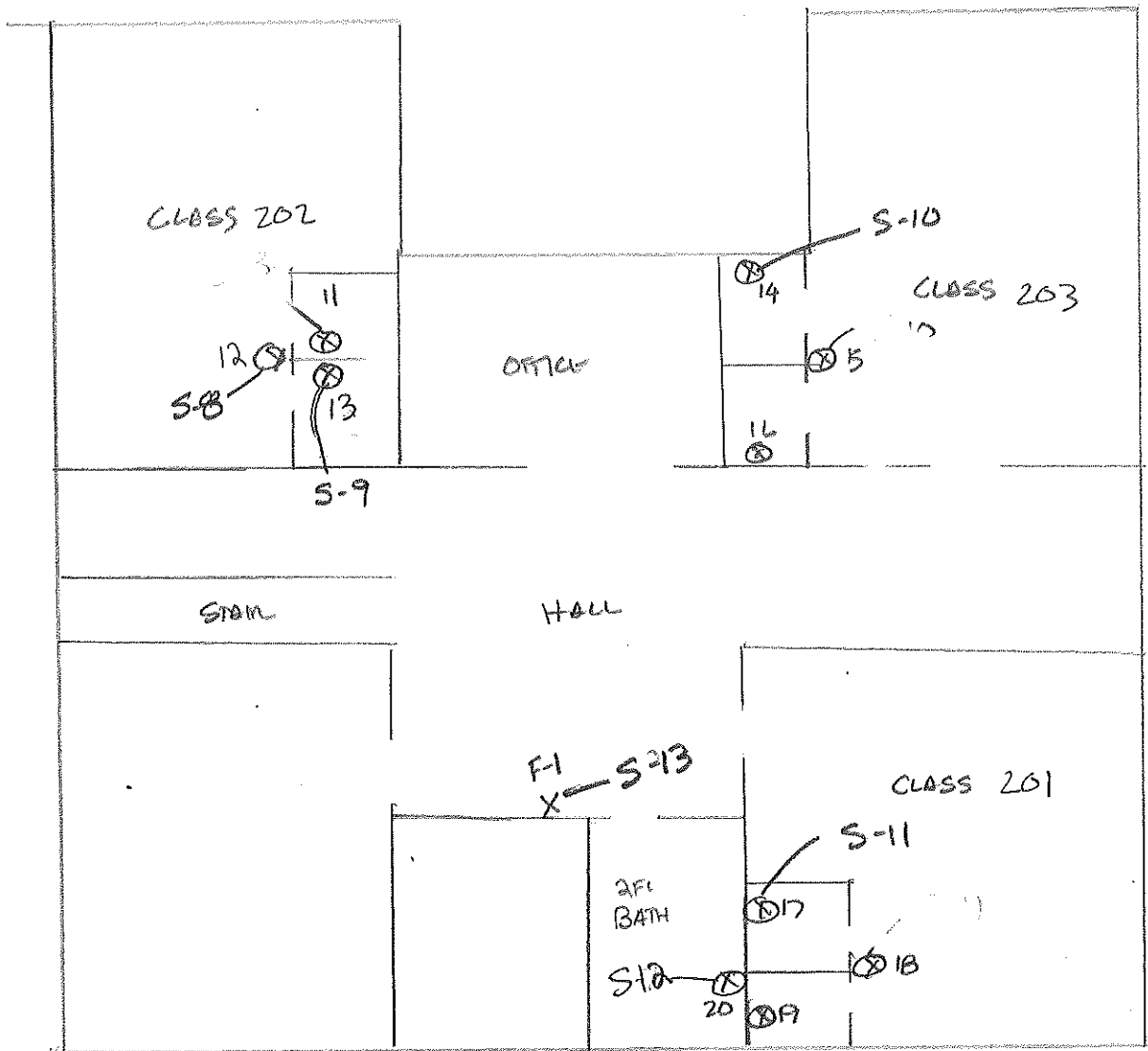




1 1ST FLOOR EGRESS PLAN  
 1/8" = 1'-0"

SYMBOL	
(⊙)	TRAY
←---	

Smith St.



179 SMITH STREET  
NEWARK NJ

**Mandell Lead Inspectors, Inc**

dba

**MANDELL ENVIRONMENTAL  
CONSULTING**

409 Minnisink Road, Suite 102, Totowa, NJ 07512  
T: 973-785-7574\* F: 973-785-0561

[mandelllead@verizon.net](mailto:mandelllead@verizon.net) \* [www.mandellenvironmental.com](http://www.mandellenvironmental.com)