



MANDELL ENVIRONMENTAL CONSULTING

409 MINNISINK ROAD • SUITE 102 • TOTOWA, NJ 07512 • (973) 785-7574 • FAX (973) 785-0561

Limited Water Sampling Report

Project Name: Unified Vailsburg Services Organization

Project Location: 40 Richelieu Terrace, Newark, NJ

Date of Sampling: April 16, 2021

Limited water sampling was performed by Mandell Environmental Consulting at Unified Vailsburg Services Organization, 40 Richelieu Terrace, Newark, NJ. Water samples were collected from the water cooler and from 50% of the other indoor water faucets utilized by the child care. The samples were collected prior to water being used in the building for a minimum of 8 hours and not longer than 48 hours. The samples were collected in 250 milliliter (ml) containers accordance with New Jersey Regulations

The samples collected were submitted for analysis to Pace Analytical, 575 Broad Hollow Road, Melville, NY 11747, certification # NY158. Samples were analyzed by Graphite Furnace AA, EPA 200.9. The following table contains the results of the sampling. The maximum contaminant level (MCL) for lead in drinking water is 15 ug/L and copper 1,300 ug/L. (Laboratory Results and sampling forms Attached).

Sample Date 04/16/21

Sample Number	Source	Results Lead	Results Copper	Units	Pos/Neg
1	Outlet 1	4.9	299	ug/L	Neg.
2	Outlet 3	1.6	60.4	ug/L	Neg.
3	Outlet 5	5.4	157	ug/L	Neg.
4	Water Cooler 1	<1.0	<2.0	ug/L	Neg.

The laboratory results show that none of the samples were found to exceed the lead in drinking water action level of 15 ug/L and copper 1,300 ug/L. Sampling forms and diagram are attached.

Sampling Performed by: Darren Slack
 NJ Lead Inspector/Risk Assessor
 Mandell Environmental Consulting
 409 Minnisink Road, Suite 102
 Totowa, NJ 07512

Signed: *Darren Slack* Date: 5-14-2021

April 26, 2021

Stuart Casciano
Mandell Environmental Consulting
409 Minnisink Road
Suite 102
Totowa, NJ 07512

RE: Project: UNITED VAILSBURG SERVICES ORG
Pace Project No.: 70169771

Dear Stuart Casciano:

Enclosed are the analytical results for sample(s) received by the laboratory on April 19, 2021. The results relate only to the samples included in this report. Results reported herein conform to the applicable TNI/NELAC Standards and the laboratory's Quality Manual, where applicable, unless otherwise noted in the body of the report.

The test results provided in this final report were generated by each of the following laboratories within the Pace Network:

- Pace Analytical Services - Melville

If you have any questions concerning this report, please feel free to contact me.

Sincerely,



Kimberley M. Mack
kimberley.mack@pacelabs.com
(631)694-3040
Project Manager

Enclosures



REPORT OF LABORATORY ANALYSIS

This report shall not be reproduced, except in full,
without the written consent of Pace Analytical Services, LLC.

CERTIFICATIONS

Project: UNITED VAILSBURG SERVICES ORG
Pace Project No.: 70169771

Pace Analytical Services Long Island

Virginia Certification # 460302

Delaware Certification # NY10478

Delaware Certification # NY10478

575 Broad Hollow Rd, Melville, NY 11747

New York Certification #: 10478 Primary Accrediting Body

New Jersey Certification #: NY158

Pennsylvania Certification #: 68-00350

Connecticut Certification #: PH-0435

Maryland Certification #: 208

Rhode Island Certification #: LAO00340

Massachusetts Certification #: M-NY026

New Hampshire Certification #: 2987

REPORT OF LABORATORY ANALYSIS

This report shall not be reproduced, except in full,
without the written consent of Pace Analytical Services, LLC.

ANALYTICAL RESULTS

Project: UNITED VAILSBURG SERVICES ORG
Pace Project No.: 70169771

Sample: 1-OUTLET 1		Lab ID: 70169771001	Collected: 04/16/21 15:00	Received: 04/19/21 19:00	Matrix: Drinking Water			
Parameters	Results	Units	Report Limit	DF	Prepared	Analyzed	CAS No.	Qual
200.8 MET ICPMS Drinking Water		Analytical Method: EPA 200.8 Pace Analytical Services - Melville						
Copper	299	ug/L	2.0	1		04/23/21 14:17	7440-50-8	
Lead	4.9	ug/L	1.0	1		04/23/21 14:17	7439-92-1	

REPORT OF LABORATORY ANALYSIS

This report shall not be reproduced, except in full,
without the written consent of Pace Analytical Services, LLC.

ANALYTICAL RESULTS

Project: UNITED VAILSBURG SERVICES ORG
Pace Project No.: 70169771

Sample: 2-OUTLET 3		Lab ID: 70169771002	Collected: 04/16/21 15:00	Received: 04/19/21 19:00	Matrix: Drinking Water			
Parameters	Results	Units	Report Limit	DF	Prepared	Analyzed	CAS No.	Qual
200.8 MET ICPMS Drinking Water		Analytical Method: EPA 200.8 Pace Analytical Services - Melville						
Copper	60.4	ug/L	2.0	1		04/23/21 14:18	7440-50-8	
Lead	1.6	ug/L	1.0	1		04/23/21 14:18	7439-92-1	

REPORT OF LABORATORY ANALYSIS

This report shall not be reproduced, except in full,
without the written consent of Pace Analytical Services, LLC.



ANALYTICAL RESULTS

Project: UNITED VAILSBURG SERVICES ORG
 Pace Project No.: 70169771

Sample: 3-OUTLET 5		Lab ID: 70169771003	Collected: 04/16/21 15:00	Received: 04/19/21 19:00	Matrix: Drinking Water			
Parameters	Results	Units	Report Limit	DF	Prepared	Analyzed	CAS No.	Qual
200.8 MET ICPMS Drinking Water		Analytical Method: EPA 200.8 Pace Analytical Services - Melville						
Copper	157	ug/L	2.0	1		04/23/21 14:19	7440-50-8	
Lead	5.4	ug/L	1.0	1		04/23/21 14:19	7439-92-1	

REPORT OF LABORATORY ANALYSIS

This report shall not be reproduced, except in full,
 without the written consent of Pace Analytical Services, LLC.

ANALYTICAL RESULTS

Project: UNITED VAILSBURG SERVICES ORG
Pace Project No.: 70169771

Sample: 4-WATER COOLER 1		Lab ID: 70169771004	Collected: 04/16/21 15:00	Received: 04/19/21 19:00	Matrix: Drinking Water			
Parameters	Results	Units	Report Limit	DF	Prepared	Analyzed	CAS No.	Qual
200.8 MET ICPMS Drinking Water		Analytical Method: EPA 200.8 Pace Analytical Services - Melville						
Copper	<2.0	ug/L	2.0	1		04/23/21 14:20	7440-50-8	
Lead	<1.0	ug/L	1.0	1		04/23/21 14:20	7439-92-1	

REPORT OF LABORATORY ANALYSIS

This report shall not be reproduced, except in full,
without the written consent of Pace Analytical Services, LLC.

QUALITY CONTROL DATA

Project: UNITED VAILSBURG SERVICES ORG
Pace Project No.: 70169771

QC Batch: 205257 Analysis Method: EPA 200.8
QC Batch Method: EPA 200.8 Analysis Description: 200.8 MET No Prep Drinking Water
Laboratory: Pace Analytical Services - Melville
Associated Lab Samples: 70169771001, 70169771002, 70169771003, 70169771004

METHOD BLANK: 1015299 Matrix: Water
Associated Lab Samples: 70169771001, 70169771002, 70169771003, 70169771004

Parameter	Units	Blank Result	Reporting Limit	Analyzed	Qualifiers
Copper	ug/L	<2.0	2.0	04/23/21 13:53	
Lead	ug/L	<1.0	1.0	04/23/21 13:53	

LABORATORY CONTROL SAMPLE: 1015300

Parameter	Units	Spike Conc.	LCS Result	LCS % Rec	% Rec Limits	Qualifiers
Copper	ug/L	50	45.9	92	85-115	
Lead	ug/L	50	48.9	98	85-115	

MATRIX SPIKE SAMPLE: 1015302

Parameter	Units	70169768003 Result	Spike Conc.	MS Result	MS % Rec	% Rec Limits	Qualifiers
Copper	ug/L	38.0	50	79.4	83	70-130	
Lead	ug/L	<1.0	50	43.5	85	70-130	

MATRIX SPIKE SAMPLE: 1015304

Parameter	Units	70169769006 Result	Spike Conc.	MS Result	MS % Rec	% Rec Limits	Qualifiers
Copper	ug/L	89.9	50	130	79	70-130	
Lead	ug/L	<1.0	50	45.2	90	70-130	

SAMPLE DUPLICATE: 1015301

Parameter	Units	70169768003 Result	Dup Result	RPD	Qualifiers
Copper	ug/L	38.0	37.7	1	
Lead	ug/L	<1.0	<1.0		

SAMPLE DUPLICATE: 1015303

Parameter	Units	70169769006 Result	Dup Result	RPD	Qualifiers
Copper	ug/L	89.9	89.1	1	
Lead	ug/L	<1.0	<1.0		

Results presented on this page are in the units indicated by the "Units" column except where an alternate unit is presented to the right of the result.

REPORT OF LABORATORY ANALYSIS

This report shall not be reproduced, except in full,
without the written consent of Pace Analytical Services, LLC.

QUALIFIERS

Project: UNITED VAILSBURG SERVICES ORG
Pace Project No.: 70169771

DEFINITIONS

DF - Dilution Factor, if reported, represents the factor applied to the reported data due to dilution of the sample aliquot.
ND - Not Detected at or above adjusted reporting limit.
TNTC - Too Numerous To Count
J - Estimated concentration above the adjusted method detection limit and below the adjusted reporting limit.
MDL - Adjusted Method Detection Limit.
PQL - Practical Quantitation Limit.
RL - Reporting Limit - The lowest concentration value that meets project requirements for quantitative data with known precision and bias for a specific analyte in a specific matrix.
S - Surrogate
1,2-Diphenylhydrazine decomposes to and cannot be separated from Azobenzene using Method 8270. The result for each analyte is a combined concentration.
Consistent with EPA guidelines, unrounded data are displayed and have been used to calculate % recovery and RPD values.
LCS(D) - Laboratory Control Sample (Duplicate)
MS(D) - Matrix Spike (Duplicate)
DUP - Sample Duplicate
RPD - Relative Percent Difference
NC - Not Calculable.
SG - Silica Gel - Clean-Up
U - Indicates the compound was analyzed for, but not detected.
N-Nitrosodiphenylamine decomposes and cannot be separated from Diphenylamine using Method 8270. The result reported for each analyte is a combined concentration.
Pace Analytical is TNI accredited. Contact your Pace PM for the current list of accredited analytes.
TNI - The NELAC Institute.

SAMPLE QUALIFIERS

Sample: 70169771001
[1] 40 RICHELIEU TERRACE, NEWARK, NJ
Sample: 70169771002
[1] 40 RICHELIEU TERRACE, NEWARK, NJ
Sample: 70169771003
[1] 40 RICHELIEU TERRACE, NEWARK, NJ
Sample: 70169771004
[1] 40 RICHELIEU TERRACE, NEWARK, NJ

REPORT OF LABORATORY ANALYSIS

This report shall not be reproduced, except in full,
without the written consent of Pace Analytical Services, LLC.

QUALITY CONTROL DATA CROSS REFERENCE TABLE

Project: UNITED VAILSBURG SERVICES ORG
Pace Project No.: 70169771

Lab ID	Sample ID	QC Batch Method	QC Batch	Analytical Method	Analytical Batch
70169771001	1-OUTLET 1	EPA 200.8	205257		
70169771002	2-OUTLET 3	EPA 200.8	205257		
70169771003	3-OUTLET 5	EPA 200.8	205257		
70169771004	4-WATER COOLER 1	EPA 200.8	205257		

REPORT OF LABORATORY ANALYSIS

This report shall not be reproduced, except in full,
without the written consent of Pace Analytical Services, LLC.



CHAIN-OF-CUSTODY / Analytical Request Document

The Chain-of-Custody is a LEGAL DOCUMENT. All relevant fields must be completed accurately.

WO#: 70169771

Section A Required Client Information:		Section B Required Project Information:		Section C Invoice Information:	
Company:	MANDELL ENVIRONMENTAL	Report To:		Attention:	
Address:	407 MANHATTAN ROAD SUITE 102 TOTOWAIC NJ 07072	Copy To:		Company Name:	SAME
Email To:	MANDELL@ENVIRONMENTAL.COM	Purchase Order No.:		Address:	
Phone:	973-735-7574	Project Name:	UNION-NET	Face Chain of Custody Reference:	
Requested Due Date/TAT:	9/27/11	Project Number:	UNION-NET	Face Project Manager:	
		Project Number:	UNION-NET	Face Project Manager:	



70169771

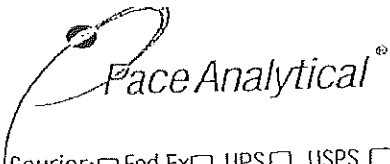
NPDES GROUND WATER DRINKING WATER
 UST RCRA OTHER
 Site Location: NJ
 STATES: NJ
 40 Richeyville Terrace
 Newark NJ

ITEM #	Section D Required Client Information	Matrix Codes MATERIAL CODE Drinking Water DW Water WT Waste Water WW Product P Soil/Solid SL Oil OL Wine WP Air AR Tissue TS Other OT	COLLECTED		SAMPLE TEMP AT COLLECTION	# OF CONTAINERS	Preservatives Unpreserved H ₂ SO ₄ HNO ₃ HCl NaOH Na ₂ S ₂ O ₈ Methanol Other	Requested Analysis Filtered (Y/N)	Temp in °C	Received on (Y/N)	Custody Sealed Cooler (Y/N)	Samples Intact (Y/N)
			DATE	TIME								
1	1 - Outlet 1	DW	4-16-21	3pm	1	1		Y				
2	2 - Outlet 3											
3	3 - Outlet 5											
4	4 - Winter Cooler 1											
5												
6												
7												
8												
9												
10												
11												
12												

ADDITIONAL COMMENTS: *Spencer*
 RELINQUISHED BY / AFFILIATION: *Spencer* DATE: 4-16-21 TIME: 5pm
 ACCEPTED BY / AFFILIATION: *Spencer* DATE: 4/19/21 TIME: 1900
 ANALYSIS TEST: *Lead + Copper*
 SAMPLE CONDITIONS: 4/19/21 16:15
 4/19/21 19:00 4.0 W N Y
 SAMPLER NAME AND SIGNATURE: *Deven Slack*
 PRINT Name of SAMPLER: Deven Slack
 SIGNATURE of SAMPLER: *Deven Slack*
 DATE SIGNED (MM/DD/YYYY): 4-16-21

ORIGINAL

Drop One



Client Name: MENDELL

Project: PM: KMM Due Date: 05/04/21 CLIENT: MEC

Courier: Fed Ex UPS USPS Client Commercial Pace Other

Tracking #: Custody Seal on Cooler/Box Present: Yes No Seals intact: Yes No Packing Material: Bubble Wrap Bubble Bags Ziploc None Other Thermometer Used: TH091 Correction Factor: 10.0 Cooler Temperature: 4.0 Cooler Temperature Corrected: 4.0

Temperature Blank Present: Yes No Type of Ice: Wet Blue None Samples on ice, cooling process has begun Date/Time 5035A kits placed in freezer

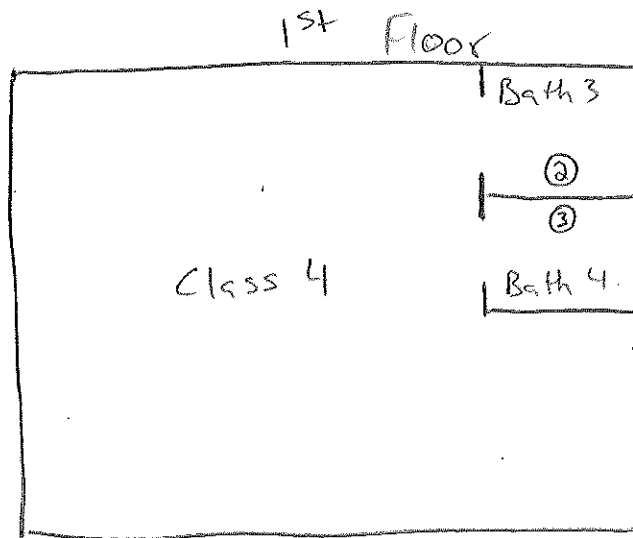
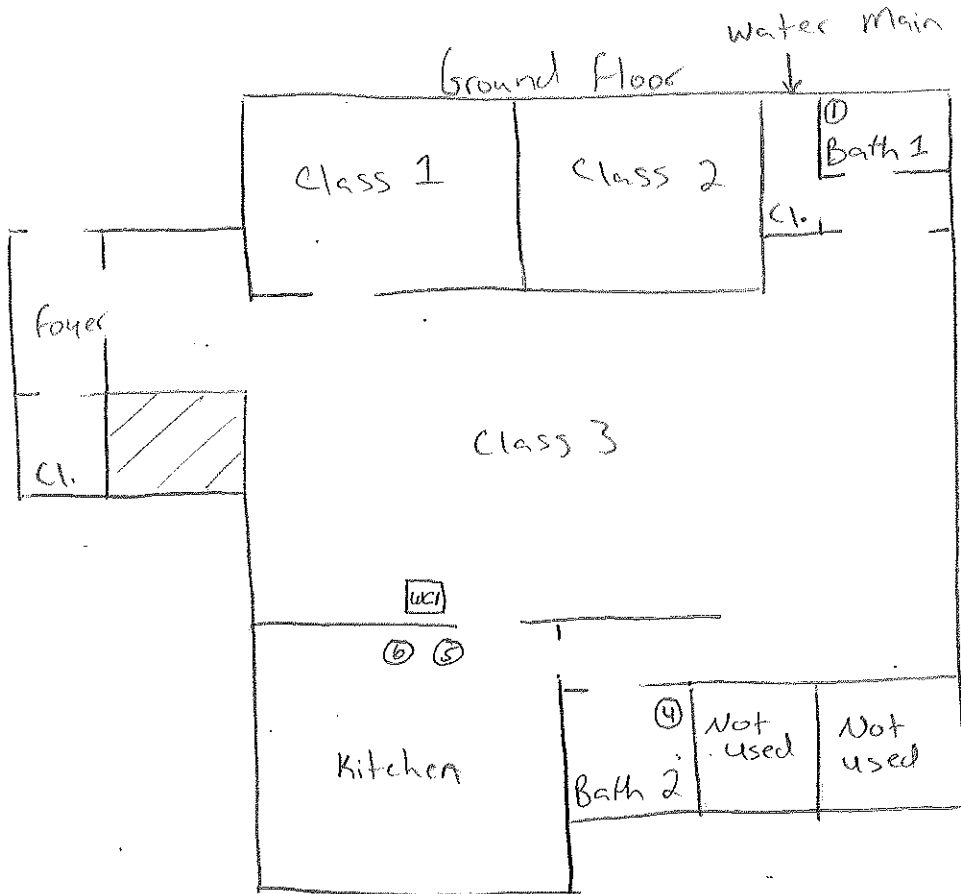
Temp should be above freezing to 6.0°C USDA Regulated Soil (N/A, water sample) Date and initials of person examining contents: MS4/19/21 Did samples originate in a quarantine zone within the United States: AL, AR, CA, FL, GA, ID, LA, MS, NC, NM, NY, OK, OR, SC, TN, TX, or VA (check map)? Yes No Did samples originate from a foreign source including Hawaii and Puerto Rico? Yes No

Chain of Custody Present: Yes No Chain of Custody Filled Out: Yes No Chain of Custody Relinquished: Yes No Sampler Name & Signature on COC: Yes No N/A Samples Arrived within Hold Time: Yes No Short Hold Time Analysis (<72hr): Yes No Rush Turn Around Time Requested: Yes No Sufficient Volume: (Triple volume provided for) Yes No Correct Containers Used: Yes No -Pace Containers Used: Yes No Containers Intact: Yes No Filtered volume received for Dissolved tests: Yes No N/A Sample Labels match COC: Yes No -Includes date/time/ID, Matrix: SL, MT, Oil All containers needing preservation have been checked? Yes No N/A pH paper Lot # HCO41002 All containers needing preservation are found to be in compliance with method recommendation? (HNO3, H2SO4, HCl, NaOH >9 Sulfide, NaOH >12 Cyanide) Yes No N/A Exceptions: VOA, Coliform, TOC/DOC, Oil and Grease, DRO/8015 (water). Per Method, VOA pH is checked after analysis Samples checked for dechlorination: Yes No N/A KI starch test strips Lot # Residual chlorine strips Lot # SM 4500 CN samples checked for sulfide? Yes No N/A Lead Acetate Strips Lot # Headspace in VOA Vials (>6mm): Yes No N/A Trip Blank Present: Yes No N/A Trip Blank Custody Seals Present: Yes No N/A Pace Trip Blank Lot # (if applicable):

Table with 17 rows and 3 columns: COMMENTS, Initial when completed, Lot # of added preservative, Date/Time preservative added. Includes notes like 'Note if sediment is visible in the dissolved container' and 'Positive for Res. Chlorine? Y N'.

Client Notification/ Resolution: Field Data Required? Y / N Person Contacted: Date/Time: Comments/ Resolution:

* PM (Project Manager) review is documented electronically in LIMS.



Ⓜ = Outlet location and number

40 Richelieu Terrace
Newark NJ

Mandell Lead Inspectors, Inc
dba
**MANDELL ENVIRONMENTAL
CONSULTING**

409 Minniskink Road, Suite 102, Totowa, NJ 07512
T: 973-785-4574* F: 973-785-0561 Cell: 973-420-5376
mandelllead@comcast.net & mandelllead@mandelllead.com