



---

## MANDELL ENVIRONMENTAL CONSULTING

---

409 MINNISINK ROAD • SUITE 102 • TOTOWA, NJ 07512 • (973) 785-7574 • FAX (973) 785-0561

### Limited Water Sampling Report

Project Name: Unified Vailsburg Services Organization

Project Location: 475 Irvington Avenue, Newark, NJ

Date of Sampling: April 23, 2021

Limited water sampling was performed by Mandell Environmental Consulting at Unified Vailsburg Services Organization, 475 Irvington Avenue, Newark, NJ. Water samples were collected from the kitchen sink faucet and water fountains used by the child care center. Samples were also collected from 50% of the other indoor water faucets utilized by the child care. The samples were collected prior to water being used in the building for a minimum of 8 hours and not longer than 48 hours. The samples were collected in 250 milliliter (ml) containers accordance with New Jersey Regulations.

The samples collected were submitted for analysis to Pace Analytical, 575 Broad Hollow Road, Melville, NY 11747, certification # NY158. Samples were analyzed by Graphite Furnace AA, EPA 200.9. The following table contains the results of the sampling. The maximum contaminant level (MCL) for lead in drinking water is 15 ug/L and copper 1,300 ug/L. (Laboratory Results and sampling forms Attached).

**Sample Date 04/23/2021**

<b>Sample Number</b>	<b>Source</b>	<b>Results Lead</b>	<b>Results Copper</b>	<b>Units</b>	<b>Pos/Neg</b>
V-1	Outlet 1	4.5	62.3	Ug/L	Neg.
V-2	Outlet 4	<1.0	37.8	ug/L	Neg.
V-3	Outlet 6	<1.0	28.5	ug/L	Neg.
V-4	Outlet 11	<1.0	11.2	ug/L	Neg.
V-5	Outlet 10	<1.0	27.9	ug/L	Neg.
V-6	Outlet 12	1.2	23.3	ug/L	Neg.
V-7	Outlet 13	3.3	43.7	ug/L	Neg.
V-8	Outlet 15	<1.0	16.1	ug/L	Neg.
V-9	Outlet 16	1.1	115	ug/L	Neg.
V-10	Outlet 18	4.5	40.2	ug/L	Neg.
V-11	Outlet 19	5.3	30.2	ug/L	Neg.
V-12	Outlet 20	1.1	27.5	ug/L	Neg.
V-13	Outlet 22	<1.0	27.6	ug/L	Neg.
V-14	Outlet 21	<1.0	12.8	ug/L	Neg.
V-15	Outlet 24	<1.0	9.6	ug/L	Neg.
V-16	Outlet 26	<1.0	37.6	ug/L	Neg.
V-17	Outlet 27	<1.0	15.5	ug/L	Neg.
V-18	Outlet 30	<1.0	40.0	ug/L	Neg.
V-19	Outlet 31	<1.0	13.9	ug/L	Neg.
V-20	Outlet 32	<1.0	30.1	ug/L	Neg.
V-21	Outlet 35	1.0	31.2	ug/L	Neg.
V-22	Outlet 37	3.4	30.0	ug/L	Neg.
V-23	Outlet 39	7.3	34.3	ug/L	Neg.
V-24	Outlet 41	1.3	36.0	ug/L	Neg.
V-25	Outlet 45	<1.0	20.7	ug/L	Neg.
V-26	Food Prep 1	<1.0	11.4	ug/L	Neg.
V-27	Water Cooler	<1.0	<2.0	ug/L	Neg.
V-28	Water Fountain 7	1.1	20.2	ug/L	Neg.
V-29	Water Fountain 9	2.5	23.3	ug/L	Neg.
V-30	Water Fountain 11	11.6	68.7	ug/L	Neg.
V-31	Water Fountain 2	2.3	26.0	ug/L	Neg.
V-32	Water Fountain 6	<1.0	8.8	ug/L	Neg.

The laboratory results show that none of the samples were found to exceed the lead in drinking water action level of 15 ug/L and copper 1,300 ug/L. Sampling forms and diagram are attached.

Sampling Performed by: Stuart Casciano  
NJ Lead Inspector/Risk Assessor  
Mandell Environmental Consulting  
409 Minnisink Road, Suite 102  
Totowa, NJ 07512

Signed:  Date: 5-18-2021

May 12, 2021

Stuart Casciano  
Mandell Environmental Consulting  
409 Minnisink Road  
Suite 102  
Totowa, NJ 07512

RE: Project: UVSO-475 IRVINETON AVE 4/23  
Pace Project No.: 70172217

Dear Stuart Casciano:

Enclosed are the analytical results for sample(s) received by the laboratory on May 07, 2021. The results relate only to the samples included in this report. Results reported herein conform to the applicable TNI/NELAC Standards and the laboratory's Quality Manual, where applicable, unless otherwise noted in the body of the report.

The test results provided in this final report were generated by each of the following laboratories within the Pace Network:

- Pace Analytical Services - Melville

If you have any questions concerning this report, please feel free to contact me.

Sincerely,



Kimberley M. Mack  
kimberley.mack@pacelabs.com  
(631)694-3040  
Project Manager

Enclosures



## REPORT OF LABORATORY ANALYSIS

This report shall not be reproduced, except in full,  
without the written consent of Pace Analytical Services, LLC.



### CERTIFICATIONS

Project: UVSO-475 IRVINETON AVE 4/23  
Pace Project No.: 70172217

---

#### Pace Analytical Services Long Island

Virginia Certification # 460302  
Delaware Certification # NY10478  
Delaware Certification # NY10478  
575 Broad Hollow Rd, Melville, NY 11747  
New York Certification #: 10478 Primary Accrediting Body  
New Jersey Certification #: NY158

Pennsylvania Certification #: 68-00350  
Connecticut Certification #: PH-0435  
Maryland Certification #: 208  
Rhode Island Certification #: LAO00340  
Massachusetts Certification #: M-NY026  
New Hampshire Certification #: 2987

---

### REPORT OF LABORATORY ANALYSIS

This report shall not be reproduced, except in full,  
without the written consent of Pace Analytical Services, LLC.

### ANALYTICAL RESULTS

Project: UVSO-475 IRVINETON AVE 4/23  
Pace Project No.: 70172217

Parameters	Results	Units	Report Limit	DF	Prepared	Analyzed	CAS No.	Qual
<b>Sample: V-1 OUTLET 1</b>		<b>Lab ID: 70172217001</b>		Collected: 04/23/21 00:00	Received: 05/07/21 10:00	Matrix: Drinking Water		
<b>200.8 MET ICPMS Drinking Water</b>		Analytical Method: EPA 200.8 Pace Analytical Services - Melville						
Copper	<b>62.3</b>	ug/L	2.0	1		05/12/21 10:20	7440-50-8	
Lead	<b>4.5</b>	ug/L	1.0	1		05/12/21 10:20	7439-92-1	

### REPORT OF LABORATORY ANALYSIS

This report shall not be reproduced, except in full,  
without the written consent of Pace Analytical Services, LLC.

### ANALYTICAL RESULTS

Project: UVSO-475 IRVINETON AVE 4/23  
Pace Project No.: 70172217

Sample: V-2 OUTLET 4		Lab ID: 70172217002	Collected: 04/23/21 00:00	Received: 05/07/21 10:00	Matrix: Drinking Water			
Parameters	Results	Units	Report Limit	DF	Prepared	Analyzed	CAS No.	Qual
<b>200.8 MET ICPMS Drinking Water</b>		Analytical Method: EPA 200.8 Pace Analytical Services - Melville						
Copper	37.8	ug/L	2.0	1		05/12/21 10:21	7440-50-8	
Lead	<1.0	ug/L	1.0	1		05/12/21 10:21	7439-92-1	

### REPORT OF LABORATORY ANALYSIS

This report shall not be reproduced, except in full,  
without the written consent of Pace Analytical Services, LLC.

### ANALYTICAL RESULTS

Project: UVSO-475 IRVINETON AVE 4/23  
Pace Project No.: 70172217

Sample: V-3 OUTLET 6		Lab ID: 70172217003	Collected: 04/23/21 00:00	Received: 05/07/21 10:00	Matrix: Drinking Water			
Parameters	Results	Units	Report Limit	DF	Prepared	Analyzed	CAS No.	Qual
<b>200.8 MET ICPMS Drinking Water</b>		Analytical Method: EPA 200.8 Pace Analytical Services - Melville						
Copper	<b>28.5</b>	ug/L	2.0	1		05/12/21 10:22	7440-50-8	
Lead	<b>&lt;1.0</b>	ug/L	1.0	1		05/12/21 10:22	7439-92-1	

### REPORT OF LABORATORY ANALYSIS

This report shall not be reproduced, except in full,  
without the written consent of Pace Analytical Services, LLC.



### ANALYTICAL RESULTS

Project: UVSO-475 IRVINETON AVE 4/23  
Pace Project No.: 70172217

Sample: V-4 OUTLET 11		Lab ID: 70172217004	Collected: 04/23/21 00:00	Received: 05/07/21 10:00	Matrix: Drinking Water			
Parameters	Results	Units	Report Limit	DF	Prepared	Analyzed	CAS No.	Qual
<b>200.8 MET ICPMS Drinking Water</b>		Analytical Method: EPA 200.8 Pace Analytical Services - Melville						
Copper	11.2	ug/L	2.0	1		05/12/21 10:23	7440-50-8	
Lead	<1.0	ug/L	1.0	1		05/12/21 10:23	7439-92-1	

### REPORT OF LABORATORY ANALYSIS

This report shall not be reproduced, except in full,  
without the written consent of Pace Analytical Services, LLC.

### ANALYTICAL RESULTS

Project: UVSO-475 IRVINETON AVE 4/23  
Pace Project No.: 70172217

Sample: V-5 OUTLET 10		Lab ID: 70172217005	Collected: 04/23/21 00:00	Received: 05/07/21 10:00	Matrix: Drinking Water			
Parameters	Results	Units	Report Limit	DF	Prepared	Analyzed	CAS No.	Qual
<b>200.8 MET ICPMS Drinking Water</b>		Analytical Method: EPA 200.8 Pace Analytical Services - Melville						
Copper	27.9	ug/L	2.0	1		05/12/21 10:26	7440-50-8	
Lead	<1.0	ug/L	1.0	1		05/12/21 10:26	7439-92-1	

### REPORT OF LABORATORY ANALYSIS

This report shall not be reproduced, except in full,  
without the written consent of Pace Analytical Services, LLC.

### ANALYTICAL RESULTS

Project: UVSO-475 IRVINETON AVE 4/23  
Pace Project No.: 70172217

Sample: V-6 OUTLET 12		Lab ID: 70172217006	Collected: 04/23/21 00:00	Received: 05/07/21 10:00	Matrix: Drinking Water			
Parameters	Results	Units	Report Limit	DF	Prepared	Analyzed	CAS No.	Qual
<b>200.8 MET ICPMS Drinking Water</b>		Analytical Method: EPA 200.8 Pace Analytical Services - Melville						
Copper	23.3	ug/L	2.0	1		05/12/21 10:28	7440-50-8	
Lead	1.2	ug/L	1.0	1		05/12/21 10:28	7439-92-1	

### REPORT OF LABORATORY ANALYSIS

This report shall not be reproduced, except in full,  
without the written consent of Pace Analytical Services, LLC.



**ANALYTICAL RESULTS**

Project: UVSO-475 IRVINETON AVE 4/23  
 Pace Project No.: 70172217

Parameters	Results	Units	Report Limit	DF	Prepared	Analyzed	CAS No.	Qual
<b>Sample: V-7 OUTLET 13</b>		<b>Lab ID: 70172217007</b>		Collected: 04/23/21 00:00	Received: 05/07/21 10:00	Matrix: Drinking Water		
<b>200.8 MET ICPMS Drinking Water</b>		Analytical Method: EPA 200.8 Pace Analytical Services - Melville						
Copper	<b>43.7</b>	ug/L	2.0	1		05/12/21 10:29	7440-50-8	
Lead	<b>3.3</b>	ug/L	1.0	1		05/12/21 10:29	7439-92-1	

**REPORT OF LABORATORY ANALYSIS**

This report shall not be reproduced, except in full,  
 without the written consent of Pace Analytical Services, LLC.

### ANALYTICAL RESULTS

Project: UVSO-475 IRVINETON AVE 4/23  
Pace Project No.: 70172217

Parameters	Results	Units	Report Limit	DF	Prepared	Analyzed	CAS No.	Qual
<b>Sample: V-8 OUTLET 15</b>		<b>Lab ID: 70172217008</b>		Collected: 04/23/21 00:00	Received: 05/07/21 10:00	Matrix: Drinking Water		
<b>200.8 MET ICPMS Drinking Water</b>								
		Analytical Method: EPA 200.8						
		Pace Analytical Services - Melville						
Copper	<b>16.1</b>	ug/L	2.0	1		05/12/21 10:30	7440-50-8	
Lead	<b>&lt;1.0</b>	ug/L	1.0	1		05/12/21 10:30	7439-92-1	

### REPORT OF LABORATORY ANALYSIS

This report shall not be reproduced, except in full,  
without the written consent of Pace Analytical Services, LLC.

### ANALYTICAL RESULTS

Project: UVSO-475 IRVINETON AVE 4/23  
Pace Project No.: 70172217

Sample: V-9 OUTLET 16		Lab ID: 70172217009	Collected: 04/23/21 00:00	Received: 05/07/21 10:00	Matrix: Drinking Water			
Parameters	Results	Units	Report Limit	DF	Prepared	Analyzed	CAS No.	Qual
<b>200.8 MET ICPMS Drinking Water</b>		Analytical Method: EPA 200.8 Pace Analytical Services - Melville						
Copper	115	ug/L	2.0	1		05/12/21 10:31	7440-50-8	
Lead	1.1	ug/L	1.0	1		05/12/21 10:31	7439-92-1	

### REPORT OF LABORATORY ANALYSIS

This report shall not be reproduced, except in full,  
without the written consent of Pace Analytical Services, LLC.

### ANALYTICAL RESULTS

Project: UVSO-475 IRVINETON AVE 4/23  
Pace Project No.: 70172217

Sample: V-10 OUTLET 18		Lab ID: 70172217010	Collected: 04/23/21 00:00	Received: 05/07/21 10:00	Matrix: Drinking Water			
Parameters	Results	Units	Report Limit	DF	Prepared	Analyzed	CAS No.	Qual
<b>200.8 MET ICPMS Drinking Water</b>		Analytical Method: EPA 200.8 Pace Analytical Services - Melville						
Copper	<b>40.2</b>	ug/L	2.0	1		05/12/21 10:32	7440-50-8	
Lead	<b>4.5</b>	ug/L	1.0	1		05/12/21 10:32	7439-92-1	

### REPORT OF LABORATORY ANALYSIS

This report shall not be reproduced, except in full,  
without the written consent of Pace Analytical Services, LLC.

### ANALYTICAL RESULTS

Project: UVSO-475 IRVINETON AVE 4/23  
Pace Project No.: 70172217

Sample: V-11 OUTLET 19		Lab ID: 70172217011	Collected: 04/23/21 00:00	Received: 05/07/21 10:00	Matrix: Drinking Water			
Parameters	Results	Units	Report Limit	DF	Prepared	Analyzed	CAS No.	Qual
<b>200.8 MET ICPMS Drinking Water</b>		Analytical Method: EPA 200.8 Pace Analytical Services - Melville						
Copper	<b>30.2</b>	ug/L	2.0	1		05/12/21 10:33	7440-50-8	
Lead	<b>5.3</b>	ug/L	1.0	1		05/12/21 10:33	7439-92-1	

### REPORT OF LABORATORY ANALYSIS

This report shall not be reproduced, except in full,  
without the written consent of Pace Analytical Services, LLC.





**ANALYTICAL RESULTS**

Project: UVSO-475 IRVINETON AVE 4/23  
 Pace Project No.: 70172217

Sample: V-12 OUTLET 20		Lab ID: 70172217012	Collected: 04/23/21 00:00	Received: 05/07/21 10:00	Matrix: Drinking Water			
Parameters	Results	Units	Report Limit	DF	Prepared	Analyzed	CAS No.	Qual
<b>200.8 MET ICPMS Drinking Water</b>		Analytical Method: EPA 200.8 Pace Analytical Services - Melville						
Copper	27.5	ug/L	2.0	1		05/12/21 10:34	7440-50-8	
Lead	1.1	ug/L	1.0	1		05/12/21 10:34	7439-92-1	

**REPORT OF LABORATORY ANALYSIS**

This report shall not be reproduced, except in full,  
 without the written consent of Pace Analytical Services, LLC.

### ANALYTICAL RESULTS

Project: UVSO-475 IRVINETON AVE 4/23

Pace Project No.: 70172217

Sample: V-13 OUTLET 22		Lab ID: 70172217013	Collected: 04/23/21 00:00	Received: 05/07/21 10:00	Matrix: Drinking Water			
Parameters	Results	Units	Report Limit	DF	Prepared	Analyzed	CAS No.	Qual
<b>200.8 MET ICPMS Drinking Water</b>		Analytical Method: EPA 200.8 Pace Analytical Services - Melville						
Copper	27.6	ug/L	2.0	1		05/12/21 10:35	7440-50-8	
Lead	<1.0	ug/L	1.0	1		05/12/21 10:35	7439-92-1	

### REPORT OF LABORATORY ANALYSIS

This report shall not be reproduced, except in full,  
without the written consent of Pace Analytical Services, LLC.

### ANALYTICAL RESULTS

Project: UVSO-475 IRVINETON AVE 4/23  
Pace Project No.: 70172217

Sample: V-14 OUTLET 21		Lab ID: 70172217014		Collected: 04/23/21 00:00		Received: 05/07/21 10:00		Matrix: Drinking Water	
Parameters	Results	Units	Report Limit	DF	Prepared	Analyzed	CAS No.	Qual	
<b>200.8 MET ICPMS Drinking Water</b>		Analytical Method: EPA 200.8 Pace Analytical Services - Melville							
Copper	12.8	ug/L	2.0	1		05/12/21 10:40	7440-50-8		
Lead	<1.0	ug/L	1.0	1		05/12/21 10:40	7439-92-1		

### REPORT OF LABORATORY ANALYSIS

This report shall not be reproduced, except in full,  
without the written consent of Pace Analytical Services, LLC.

### ANALYTICAL RESULTS

Project: UVSO-475 IRVINETON AVE 4/23  
Pace Project No.: 70172217

Sample: V-15 OUTLET 24		Lab ID: 70172217015	Collected: 04/23/21 00:00	Received: 05/07/21 10:00	Matrix: Drinking Water			
Parameters	Results	Units	Report Limit	DF	Prepared	Analyzed	CAS No.	Qual
<b>200.8 MET ICPMS Drinking Water</b>		Analytical Method: EPA 200.8 Pace Analytical Services - Melville						
Copper	9.6	ug/L	2.0	1		05/12/21 10:43	7440-50-8	
Lead	<1.0	ug/L	1.0	1		05/12/21 10:43	7439-92-1	

### REPORT OF LABORATORY ANALYSIS

This report shall not be reproduced, except in full,  
without the written consent of Pace Analytical Services, LLC.

### ANALYTICAL RESULTS

Project: UVSO-475 IRVINETON AVE 4/23  
Pace Project No.: 70172217

Sample: V-16 OUTLET 26		Lab ID: 70172217016		Collected: 04/23/21 00:00		Received: 05/07/21 10:00		Matrix: Drinking Water	
Parameters	Results	Units	Report Limit	DF	Prepared	Analyzed	CAS No.	Qual	
<b>200.8 MET ICPMS Drinking Water</b>		Analytical Method: EPA 200.8 Pace Analytical Services - Melville							
Copper	37.6	ug/L	2.0	1		05/12/21 10:44	7440-50-8		
Lead	<1.0	ug/L	1.0	1		05/12/21 10:44	7439-92-1		

### REPORT OF LABORATORY ANALYSIS

This report shall not be reproduced, except in full,  
without the written consent of Pace Analytical Services, LLC.

### ANALYTICAL RESULTS

Project: UVSO-475 IRVINETON AVE 4/23

Pace Project No.: 70172217

Sample: V-17 OUTLET 27		Lab ID: 70172217017	Collected: 04/23/21 00:00	Received: 05/07/21 10:00	Matrix: Drinking Water			
Parameters	Results	Units	Report Limit	DF	Prepared	Analyzed	CAS No.	Qual
<b>200.8 MET ICPMS Drinking Water</b>		Analytical Method: EPA 200.8 Pace Analytical Services - Melville						
Copper	15.5	ug/L	2.0	1		05/12/21 10:45	7440-50-8	
Lead	<1.0	ug/L	1.0	1		05/12/21 10:45	7439-92-1	

### REPORT OF LABORATORY ANALYSIS

This report shall not be reproduced, except in full,  
without the written consent of Pace Analytical Services, LLC.

### ANALYTICAL RESULTS

Project: UVSO-475 IRVINETON AVE 4/23  
Pace Project No.: 70172217

Sample: V-18 OUTLET 30		Lab ID: 70172217018		Collected: 04/23/21 00:00		Received: 05/07/21 10:00		Matrix: Drinking Water	
Parameters	Results	Units	Report Limit	DF	Prepared	Analyzed	CAS No.	Qual	
<b>200.8 MET ICPMS Drinking Water</b>		Analytical Method: EPA 200.8 Pace Analytical Services - Melville							
Copper	40.0	ug/L	2.0	1		05/12/21 10:46	7440-50-8		
Lead	<1.0	ug/L	1.0	1		05/12/21 10:46	7439-92-1		

### REPORT OF LABORATORY ANALYSIS

This report shall not be reproduced, except in full,  
without the written consent of Pace Analytical Services, LLC.



**ANALYTICAL RESULTS**

Project: UVSO-475 IRVINETON AVE 4/23  
 Pace Project No.: 70172217

Sample: V-19 OUTLET 31		Lab ID: 70172217019	Collected: 04/23/21 00:00	Received: 05/07/21 10:00	Matrix: Drinking Water			
Parameters	Results	Units	Report Limit	DF	Prepared	Analyzed	CAS No.	Qual
<b>200.8 MET ICPMS Drinking Water</b>		Analytical Method: EPA 200.8 Pace Analytical Services - Melville						
Copper	<b>13.9</b>	ug/L	2.0	1		05/12/21 10:47	7440-50-8	
Lead	<b>&lt;1.0</b>	ug/L	1.0	1		05/12/21 10:47	7439-92-1	

**REPORT OF LABORATORY ANALYSIS**

This report shall not be reproduced, except in full,  
 without the written consent of Pace Analytical Services, LLC.



### ANALYTICAL RESULTS

Project: UVSO-475 IRVINETON AVE 4/23  
Pace Project No.: 70172217

Sample: V-20 OUTLET 32		Lab ID: 70172217020	Collected: 04/23/21 00:00	Received: 05/07/21 10:00	Matrix: Drinking Water			
Parameters	Results	Units	Report Limit	DF	Prepared	Analyzed	CAS No.	Qual
<b>200.8 MET ICPMS Drinking Water</b>		Analytical Method: EPA 200.8 Pace Analytical Services - Melville						
Copper	30.1	ug/L	2.0	1		05/12/21 10:48	7440-50-8	
Lead	<1.0	ug/L	1.0	1		05/12/21 10:48	7439-92-1	

### REPORT OF LABORATORY ANALYSIS

This report shall not be reproduced, except in full,  
without the written consent of Pace Analytical Services, LLC.

### ANALYTICAL RESULTS

Project: UVSO-475 IRVINETON AVE 4/23

Pace Project No.: 70172217

Sample: V-21 OUTLET 35		Lab ID: 70172217021	Collected: 04/23/21 00:00	Received: 05/07/21 10:00	Matrix: Drinking Water			
Parameters	Results	Units	Report Limit	DF	Prepared	Analyzed	CAS No.	Qual
<b>200.8 MET ICPMS Drinking Water</b>		Analytical Method: EPA 200.8 Pace Analytical Services - Melville						
Copper	31.2	ug/L	2.0	1		05/12/21 10:49	7440-50-8	
Lead	1.0	ug/L	1.0	1		05/12/21 10:49	7439-92-1	

### REPORT OF LABORATORY ANALYSIS

This report shall not be reproduced, except in full,  
without the written consent of Pace Analytical Services, LLC.

### ANALYTICAL RESULTS

Project: UVSO-475 IRVINETON AVE 4/23  
Pace Project No.: 70172217

Sample: V-22 OUTLET 37		Lab ID: 70172217022	Collected: 04/23/21 00:00	Received: 05/07/21 10:00	Matrix: Drinking Water			
Parameters	Results	Units	Report Limit	DF	Prepared	Analyzed	CAS No.	Qual
<b>200.8 MET ICPMS Drinking Water</b>		Analytical Method: EPA 200.8 Pace Analytical Services - Melville						
Copper	<b>30.0</b>	ug/L	2.0	1		05/12/21 10:51	7440-50-8	
Lead	<b>3.4</b>	ug/L	1.0	1		05/12/21 10:51	7439-92-1	

### REPORT OF LABORATORY ANALYSIS

This report shall not be reproduced, except in full,  
without the written consent of Pace Analytical Services, LLC.

## ANALYTICAL RESULTS

Project: UVSO-475 IRVINETON AVE 4/23  
Pace Project No.: 70172217

Sample: V-23 OUTLET 39		Lab ID: 70172217023		Collected: 04/23/21 00:00		Received: 05/07/21 10:00		Matrix: Drinking Water	
Parameters	Results	Units	Report Limit	DF	Prepared	Analyzed	CAS No.	Qual	
<b>200.8 MET ICPMS Drinking Water</b>		Analytical Method: EPA 200.8 Pace Analytical Services - Melville							
Copper	<b>34.3</b>	ug/L	2.0	1		05/12/21 10:52	7440-50-8		
Lead	<b>7.3</b>	ug/L	1.0	1		05/12/21 10:52	7439-92-1		

## REPORT OF LABORATORY ANALYSIS

This report shall not be reproduced, except in full,  
without the written consent of Pace Analytical Services, LLC.

### ANALYTICAL RESULTS

Project: UVSO-475 IRVINETON AVE 4/23  
Pace Project No.: 70172217

Sample: V-24 OUTLET 41		Lab ID: 70172217024		Collected: 04/23/21 00:00		Received: 05/07/21 10:00		Matrix: Drinking Water	
Parameters	Results	Units	Report Limit	DF	Prepared	Analyzed	CAS No.	Qual	
<b>200.8 MET ICPMS Drinking Water</b>		Analytical Method: EPA 200.8 Pace Analytical Services - Melville							
Copper	<b>36.0</b>	ug/L	2.0	1		05/12/21 10:53	7440-50-8		
Lead	<b>1.3</b>	ug/L	1.0	1		05/12/21 10:53	7439-92-1		

### REPORT OF LABORATORY ANALYSIS

This report shall not be reproduced, except in full,  
without the written consent of Pace Analytical Services, LLC.

### ANALYTICAL RESULTS

Project: UVSO-475 IRVINETON AVE 4/23

Pace Project No.: 70172217

Sample: V-25 OUTLET 43		Lab ID: 70172217025	Collected: 04/23/21 00:00	Received: 05/07/21 10:00	Matrix: Drinking Water			
Parameters	Results	Units	Report Limit	DF	Prepared	Analyzed	CAS No.	Qual
<b>200.8 MET ICPMS Drinking Water</b>		Analytical Method: EPA 200.8 Pace Analytical Services - Melville						
Copper	20.7	ug/L	2.0	1		05/12/21 10:56	7440-50-8	
Lead	<1.0	ug/L	1.0	1		05/12/21 10:56	7439-92-1	

### REPORT OF LABORATORY ANALYSIS

This report shall not be reproduced, except in full,  
without the written consent of Pace Analytical Services, LLC.

### ANALYTICAL RESULTS

Project: UVSO-475 IRVINETON AVE 4/23  
Pace Project No.: 70172217

Sample: V-26 FOOD PREP 1		Lab ID: 70172217026	Collected: 04/23/21 00:00	Received: 05/07/21 10:00	Matrix: Drinking Water			
Parameters	Results	Units	Report Limit	DF	Prepared	Analyzed	CAS No.	Qual
<b>200.8 MET ICPMS Drinking Water</b>		Analytical Method: EPA 200.8 Pace Analytical Services - Melville						
Copper	11.4	ug/L	2.0	1		05/12/21 10:57	7440-50-8	
Lead	<1.0	ug/L	1.0	1		05/12/21 10:57	7439-92-1	

### REPORT OF LABORATORY ANALYSIS

This report shall not be reproduced, except in full,  
without the written consent of Pace Analytical Services, LLC.

### ANALYTICAL RESULTS

Project: UVSO-475 IRVINETON AVE 4/23  
Pace Project No.: 70172217

Sample: V-27 WATER COOLER		Lab ID: 70172217027	Collected: 04/23/21 00:00	Received: 05/07/21 10:00	Matrix: Drinking Water			
Parameters	Results	Units	Report Limit	DF	Prepared	Analyzed	CAS No.	Qual
<b>200.8 MET ICPMS Drinking Water</b>		Analytical Method: EPA 200.8 Pace Analytical Services - Melville						
Copper	<2.0	ug/L	2.0	1		05/12/21 10:58	7440-50-8	
Lead	<1.0	ug/L	1.0	1		05/12/21 10:58	7439-92-1	

### REPORT OF LABORATORY ANALYSIS

This report shall not be reproduced, except in full,  
without the written consent of Pace Analytical Services, LLC.





**ANALYTICAL RESULTS**

Project: UVSO-475 IRVINETON AVE 4/23  
 Pace Project No.: 70172217

Sample: V-28 WATER FOUNTAIN 7		Lab ID: 70172217028	Collected: 04/23/21 00:00	Received: 05/07/21 10:00	Matrix: Drinking Water			
Parameters	Results	Units	Report Limit	DF	Prepared	Analyzed	CAS No.	Qual
<b>200.8 MET ICPMS Drinking Water</b>		Analytical Method: EPA 200.8 Pace Analytical Services - Melville						
Copper	20.2	ug/L	2.0	1		05/12/21 10:59	7440-50-8	
Lead	1.1	ug/L	1.0	1		05/12/21 10:59	7439-92-1	

**REPORT OF LABORATORY ANALYSIS**

This report shall not be reproduced, except in full,  
 without the written consent of Pace Analytical Services, LLC.

### ANALYTICAL RESULTS

Project: UVSO-475 IRVINETON AVE 4/23  
Pace Project No.: 70172217

Parameters	Results	Units	Report Limit	DF	Prepared	Analyzed	CAS No.	Qual
<b>Sample: V-29 WATER FOUNTAIN 9    Lab ID: 70172217029    Collected: 04/23/21 00:00    Received: 05/07/21 10:00    Matrix: Drinking Water</b>								
<b>200.8 MET ICPMS Drinking Water</b>								
Analytical Method: EPA 200.8 Pace Analytical Services - Melville								
Copper	23.3	ug/L	2.0	1		05/12/21 11:00	7440-50-8	
Lead	2.5	ug/L	1.0	1		05/12/21 11:00	7439-92-1	

### REPORT OF LABORATORY ANALYSIS

This report shall not be reproduced, except in full,  
without the written consent of Pace Analytical Services, LLC.

### ANALYTICAL RESULTS

Project: UVSO-475 IRVINETON AVE 4/23  
Pace Project No.: 70172217

Sample: V-30 WATER FOUNTAIN 11    Lab ID: 70172217030    Collected: 04/23/21 00:00    Received: 05/07/21 10:00    Matrix: Drinking Water								
Parameters	Results	Units	Report Limit	DF	Prepared	Analyzed	CAS No.	Qual
<b>200.8 MET ICPMS Drinking Water</b>								
Analytical Method: EPA 200.8 Pace Analytical Services - Melville								
Copper	68.7	ug/L	2.0	1		05/12/21 11:03	7440-50-8	
Lead	11.6	ug/L	1.0	1		05/12/21 11:03	7439-92-1	

### REPORT OF LABORATORY ANALYSIS

This report shall not be reproduced, except in full,  
without the written consent of Pace Analytical Services, LLC.

### ANALYTICAL RESULTS

Project: UVSO-475 IRVINETON AVE 4/23  
Pace Project No.: 70172217

Sample: V-31 WATER FOUNTAIN 2		Lab ID: 70172217031	Collected: 04/23/21 00:00	Received: 05/07/21 10:00	Matrix: Drinking Water			
Parameters	Results	Units	Report Limit	DF	Prepared	Analyzed	CAS No.	Qual
<b>200.8 MET ICPMS Drinking Water</b>		Analytical Method: EPA 200.8 Pace Analytical Services - Melville						
Copper	<b>26.0</b>	ug/L	2.0	1		05/12/21 11:04	7440-50-8	
Lead	<b>2.3</b>	ug/L	1.0	1		05/12/21 11:04	7439-92-1	

### REPORT OF LABORATORY ANALYSIS

This report shall not be reproduced, except in full,  
without the written consent of Pace Analytical Services, LLC.

### ANALYTICAL RESULTS

Project: UVSO-475 IRVINETON AVE 4/23  
Pace Project No.: 70172217

Sample: V-32 WATER FOUNTAIN 6		Lab ID: 70172217032	Collected: 04/23/21 00:00	Received: 05/07/21 10:00	Matrix: Drinking Water			
Parameters	Results	Units	Report Limit	DF	Prepared	Analyzed	CAS No.	Qual
<b>200.8 MET ICPMS Drinking Water</b>		Analytical Method: EPA 200.8 Pace Analytical Services - Melville						
Copper	8.8	ug/L	2.0	1		05/12/21 11:05	7440-50-8	
Lead	<1.0	ug/L	1.0	1		05/12/21 11:05	7439-92-1	

### REPORT OF LABORATORY ANALYSIS

This report shall not be reproduced, except in full,  
without the written consent of Pace Analytical Services, LLC.

### QUALITY CONTROL DATA

Project: UVSO-475 IRVINETON AVE 4/23  
Pace Project No.: 70172217

QC Batch: 208158	Analysis Method: EPA 200.8
QC Batch Method: EPA 200.8	Analysis Description: 200.8 MET No Prep Drinking Water
	Laboratory: Pace Analytical Services - Melville

Associated Lab Samples: 70172217001, 70172217002, 70172217003, 70172217004, 70172217005, 70172217006, 70172217007, 70172217008, 70172217009, 70172217010, 70172217011, 70172217012, 70172217013

METHOD BLANK: 1035966 Matrix: Water  
Associated Lab Samples: 70172217001, 70172217002, 70172217003, 70172217004, 70172217005, 70172217006, 70172217007, 70172217008, 70172217009, 70172217010, 70172217011, 70172217012, 70172217013

Parameter	Units	Blank Result	Reporting Limit	Analyzed	Qualifiers
Copper	ug/L	<2.0	2.0	05/12/21 10:08	
Lead	ug/L	<1.0	1.0	05/12/21 10:08	

LABORATORY CONTROL SAMPLE: 1035967

Parameter	Units	Spike Conc.	LCS Result	LCS % Rec	% Rec Limits	Qualifiers
Copper	ug/L	50	48.7	97	85-115	
Lead	ug/L	50	51.3	103	85-115	

MATRIX SPIKE SAMPLE: 1035969

Parameter	Units	70172215001 Result	Spike Conc.	MS Result	MS % Rec	% Rec Limits	Qualifiers
Copper	ug/L	355	50	384	57	70-130	M1
Lead	ug/L	1.3	50	53.1	103	70-130	

MATRIX SPIKE SAMPLE: 1035971

Parameter	Units	70172217004 Result	Spike Conc.	MS Result	MS % Rec	% Rec Limits	Qualifiers
Copper	ug/L	11.2	50	56.8	91	70-130	
Lead	ug/L	<1.0	50	54.8	108	70-130	

SAMPLE DUPLICATE: 1035968

Parameter	Units	70172215001 Result	Dup Result	RPD	Qualifiers
Copper	ug/L	355	351	1	
Lead	ug/L	1.3	1.3	2	

SAMPLE DUPLICATE: 1035970

Parameter	Units	70172217004 Result	Dup Result	RPD	Qualifiers
Copper	ug/L	11.2	11.2	1	

Results presented on this page are in the units indicated by the "Units" column except where an alternate unit is presented to the right of the result.

### REPORT OF LABORATORY ANALYSIS

This report shall not be reproduced, except in full, without the written consent of Pace Analytical Services, LLC.

**QUALITY CONTROL DATA**

Project: UVSO-475 IRVINETON AVE 4/23  
Pace Project No.: 70172217

SAMPLE DUPLICATE: 1035970

Parameter	Units	70172217004 Result	Dup Result	RPD	Qualifiers
Lead	ug/L	<1.0	<1.0		

Results presented on this page are in the units indicated by the "Units" column except where an alternate unit is presented to the right of the result.

**REPORT OF LABORATORY ANALYSIS**

This report shall not be reproduced, except in full,  
without the written consent of Pace Analytical Services, LLC.

### QUALITY CONTROL DATA

Project: UVSO-475 IRVINETON AVE 4/23  
Pace Project No.: 70172217

QC Batch:	208159	Analysis Method:	EPA 200.8
QC Batch Method:	EPA 200.8	Analysis Description:	200.8 MET No Prep Drinking Water
		Laboratory:	Pace Analytical Services - Melville

Associated Lab Samples: 70172217014, 70172217015, 70172217016, 70172217017, 70172217018, 70172217019, 70172217020, 70172217021, 70172217022, 70172217023, 70172217024, 70172217025, 70172217026, 70172217027, 70172217028, 70172217029, 70172217030, 70172217031, 70172217032

METHOD BLANK: 1035972 Matrix: Water

Associated Lab Samples: 70172217014, 70172217015, 70172217016, 70172217017, 70172217018, 70172217019, 70172217020, 70172217021, 70172217022, 70172217023, 70172217024, 70172217025, 70172217026, 70172217027, 70172217028, 70172217029, 70172217030, 70172217031, 70172217032

Parameter	Units	Blank Result	Reporting Limit	Analyzed	Qualifiers
Copper	ug/L	<2.0	2.0	05/12/21 10:36	
Lead	ug/L	<1.0	1.0	05/12/21 10:36	

LABORATORY CONTROL SAMPLE: 1035973

Parameter	Units	Spike Conc.	LCS Result	LCS % Rec	% Rec Limits	Qualifiers
Copper	ug/L	50	48.1	96	85-115	
Lead	ug/L	50	50.8	102	85-115	

MATRIX SPIKE SAMPLE: 1035975

Parameter	Units	70172217014 Result	Spike Conc.	MS Result	MS % Rec	% Rec Limits	Qualifiers
Copper	ug/L	12.8	50	58.5	91	70-130	
Lead	ug/L	<1.0	50	54.3	108	70-130	

MATRIX SPIKE SAMPLE: 1035977

Parameter	Units	70172217024 Result	Spike Conc.	MS Result	MS % Rec	% Rec Limits	Qualifiers
Copper	ug/L	36.0	50	83.0	94	70-130	
Lead	ug/L	1.3	50	56.8	111	70-130	

SAMPLE DUPLICATE: 1035974

Parameter	Units	70172217014 Result	Dup Result	RPD	Qualifiers
Copper	ug/L	12.8	12.6	1	
Lead	ug/L	<1.0	<1.0		

Results presented on this page are in the units indicated by the "Units" column except where an alternate unit is presented to the right of the result.

### REPORT OF LABORATORY ANALYSIS

This report shall not be reproduced, except in full,  
without the written consent of Pace Analytical Services, LLC.



**QUALITY CONTROL DATA**

Project: UVSO-475 IRVINETON AVE 4/23  
Pace Project No.: 70172217

SAMPLE DUPLICATE: 1035976

Parameter	Units	70172217024 Result	Dup Result	RPD	Qualifiers
Copper	ug/L	36.0	36.0	0	
Lead	ug/L	1.3	1.3	1	

Results presented on this page are in the units indicated by the "Units" column except where an alternate unit is presented to the right of the result.

**REPORT OF LABORATORY ANALYSIS**

This report shall not be reproduced, except in full,  
without the written consent of Pace Analytical Services, LLC.

## QUALIFIERS

Project: UVSO-475 IRVINETON AVE 4/23  
Pace Project No.: 70172217

---

### DEFINITIONS

DF - Dilution Factor, if reported, represents the factor applied to the reported data due to dilution of the sample aliquot.  
ND - Not Detected at or above adjusted reporting limit.  
TNTC - Too Numerous To Count  
J - Estimated concentration above the adjusted method detection limit and below the adjusted reporting limit.  
MDL - Adjusted Method Detection Limit.  
PQL - Practical Quantitation Limit.  
RL - Reporting Limit - The lowest concentration value that meets project requirements for quantitative data with known precision and bias for a specific analyte in a specific matrix.  
S - Surrogate  
1,2-Diphenylhydrazine decomposes to and cannot be separated from Azobenzene using Method 8270. The result for each analyte is a combined concentration.  
Consistent with EPA guidelines, unrounded data are displayed and have been used to calculate % recovery and RPD values.  
LCS(D) - Laboratory Control Sample (Duplicate)  
MS(D) - Matrix Spike (Duplicate)  
DUP - Sample Duplicate  
RPD - Relative Percent Difference  
NC - Not Calculable.  
SG - Silica Gel - Clean-Up  
U - Indicates the compound was analyzed for, but not detected.  
N-Nitrosodiphenylamine decomposes and cannot be separated from Diphenylamine using Method 8270. The result reported for each analyte is a combined concentration.  
Pace Analytical is TNI accredited. Contact your Pace PM for the current list of accredited analytes.  
TNI - The NELAC Institute.

### ANALYTE QUALIFIERS

M1 Matrix spike recovery exceeded QC limits. Batch accepted based on laboratory control sample (LCS) recovery.

## REPORT OF LABORATORY ANALYSIS

This report shall not be reproduced, except in full,  
without the written consent of Pace Analytical Services, LLC.

### QUALITY CONTROL DATA CROSS REFERENCE TABLE

Project: UVSO-475 IRVINETON AVE 4/23  
Pace Project No.: 70172217

Lab ID	Sample ID	QC Batch Method	QC Batch	Analytical Method	Analytical Batch
70172217001	V-1 OUTLET 1	EPA 200.8	208158		
70172217002	V-2 OUTLET 4	EPA 200.8	208158		
70172217003	V-3 OUTLET 6	EPA 200.8	208158		
70172217004	V-4 OUTLET 11	EPA 200.8	208158		
70172217005	V-5 OUTLET 10	EPA 200.8	208158		
70172217006	V-6 OUTLET 12	EPA 200.8	208158		
70172217007	V-7 OUTLET 13	EPA 200.8	208158		
70172217008	V-8 OUTLET 15	EPA 200.8	208158		
70172217009	V-9 OUTLET 16	EPA 200.8	208158		
70172217010	V-10 OUTLET 18	EPA 200.8	208158		
70172217011	V-11 OUTLET 19	EPA 200.8	208158		
70172217012	V-12 OUTLET 20	EPA 200.8	208158		
70172217013	V-13 OUTLET 22	EPA 200.8	208158		
70172217014	V-14 OUTLET 21	EPA 200.8	208159		
70172217015	V-15 OUTLET 24	EPA 200.8	208159		
70172217016	V-16 OUTLET 26	EPA 200.8	208159		
70172217017	V-17 OUTLET 27	EPA 200.8	208159		
70172217018	V-18 OUTLET 30	EPA 200.8	208159		
70172217019	V-19 OUTLET 31	EPA 200.8	208159		
70172217020	V-20 OUTLET 32	EPA 200.8	208159		
70172217021	V-21 OUTLET 35	EPA 200.8	208159		
70172217022	V-22 OUTLET 37	EPA 200.8	208159		
70172217023	V-23 OUTLET 39	EPA 200.8	208159		
70172217024	V-24 OUTLET 41	EPA 200.8	208159		
70172217025	V-25 OUTLET 43	EPA 200.8	208159		
70172217026	V-26 FOOD PREP 1	EPA 200.8	208159		
70172217027	V-27 WATER COOLER	EPA 200.8	208159		
70172217028	V-28 WATER FOUNTAIN 7	EPA 200.8	208159		
70172217029	V-29 WATER FOUNTAIN 9	EPA 200.8	208159		
70172217030	V-30 WATER FOUNTAIN 11	EPA 200.8	208159		
70172217031	V-31 WATER FOUNTAIN 2	EPA 200.8	208159		
70172217032	V-32 WATER FOUNTAIN 6	EPA 200.8	208159		

### REPORT OF LABORATORY ANALYSIS

This report shall not be reproduced, except in full,  
without the written consent of Pace Analytical Services, LLC.



# CHAIN-OF-CUSTODY / Analytical Request Document

The Chain-of-Custody is a LEGAL DOCUMENT. All relevant fields must be completed accurately.

**Section A:** Required Client Information  
 Company: **MANDELL ENVIRONMENTAL**  
 Address: **409 MANHATTAN ROAD SUITE 102, TOWSON, NJ 07072**  
 Email To: **MANDSELL@ENVIRONMENTAL.COM**  
 Phone: **732-783-8774**  
 Requested Due Date/TIME: **5/23/2021 5:00 PM**

**Section B:** Required Project Information  
 Report To: **MANDELL ENV.**  
 Copy To: **MANDELL ENV.**  
 Purchase Order No.: **UNSO-475**  
 Project Name: **475 DUNNETON AVE NEWARK NJ**  
 Project Number: **NEWARK NJ**

**Section C:** Invoice Information  
 Attention: **MANDSELL ENV.**  
 Address: **STATE**  
 Site Location: **NJ**  
 Regulatory Agency: **NPDES**  **GROUND WATER**  **DRINKING WATER**  
 **UST**  **RORA**  **OTHER**

Page: **1** of **3**  
 2054211

ITEM #	Sample ID (AZ, 0-9 / A)	Matrix Codes Drinking Water Water Waste Water Product Soil/Solid Oil Yoga Air Tissue Other	Matrix Code DW WT VW P SL OI WP AR TS OT	Requested Client Information	MATRIX CODE (See valid codes to left)	SAMPLE TYPE (G-RAB or COMP)	COLLECTED		# OF CONTAINERS	Preservatives H <sub>2</sub> SO <sub>4</sub> HNO <sub>3</sub> HCl NaOH Na <sub>2</sub> SO <sub>4</sub> Methanol Other	Requested Analysis Filtered (Y/N)	Page Project No./ Lab I.D.
							COMPOSITE START	COMPOSITE END/DATE				
1	V-1	OUTLET 1			DWG		DATE: 5-23-2021	TIME: 10:00	1			
2	V-2	"										
3	V-3	"										
4	V-4	"										
5	V-5	"										
6	V-6	"										
7	V-7	"										
8	V-8	"										
9	V-9	"										
10	V-10	"										
11	V-11	"										
12	V-12	"										

**Section D:** Required Client Information  
 Requested Due Date/TIME: **5/23/2021 5:00 PM**

**Section E:** Relinquished by / Affiliation  
 Signature: *[Signature]*  
 Date: **5/20/21**

**Section F:** Accepted by / Affiliation  
 Signature: *[Signature]*  
 Date: **5/21/21 10:00**

**Section G:** Additional Comments  
 Temp in °C: \_\_\_\_\_  
 Received on: \_\_\_\_\_  
 Ice (Y/N): \_\_\_\_\_  
 Custody Sealed Cooler (Y/N): \_\_\_\_\_  
 Samples Intact (Y/N): \_\_\_\_\_

**Section H:** Sampler Name and Signature  
 PRINT Name of SAMPLER: **STUART CASCIANO**  
 SIGNATURE of SAMPLER: *[Signature]*  
 DATE Signed (MM/DD/YYYY): \_\_\_\_\_



# CHAIN-OF-CUSTODY / Analytical Request Document

The Chain-of-Custody is a LEGAL DOCUMENT. All relevant fields must be completed accurately.

**Section A:** Required Client Information: Company: **MANDELL ENVIRONMENTAL** Address: **401 MANDELL BLVD SUITE 103, TOTOWAH, NJ 07068** Email To: **MANDELL ENVIRONMENTAL** Phone: **973-785-8774** Requested Date: **5 DAY**

**Section B:** Required Project Information: Report To: **MANDELL ENV.** Copy To: **MANDELL ENV.** Purchase Order No.: **UVSO-475 JONWTON AVS** Project Name: **NEWARK NJ** Project Number: **NEWARK NJ**

**Section C:** Invoicing Information: Attention: **MANDELL ENV.** Company Name: **MANDELL ENV.** Address: **3 AME** State: **NJ** Site Location: **NEWARK NJ** NPDES:  GROUND WATER  DRINKING WATER  UST  RORA  OTHER

Page: **2** of **3** Page# **2054211**

ITEM #	Matrix Codes MATRIX CODE	Sample ID (A-Z, 0-9) Sample ID MUST BE UNIQUE	COLLECTED		DATE	TIME	SAMPLER TEMP AT COLLECTION	# OF CONTAINERS	Preservatives	Requested Analysis Filtered (Y/N)	Residual Chlorine (Y/N)
			COMPOSITE START	COMPOSITE PROGRAM							
1	Drinking Water	V-13	OUTLET								
2	Water	V-14			5-23-2021						
3	Waste Water	V-15									
4	Product	V-16									
5	Spill/Leak	V-17									
6	Oil	V-18									
7	Wipes	V-19									
8	Air	V-20									
9	Tissue	V-21									
10	Other	V-22									
11		V-23									
12		V-24									

**ADDITIONAL COMMENTS:** *MANDELL ENV.*

**REQUISITIONED BY / AFFILIATION:** *MANDELL ENV.* DATE: *5-23-2021* TIME: *10:00*

**ACQUIRED BY / AFFILIATION:** *MANDELL ENV.* DATE: *5/23* TIME: *10:00*

**SAMPLER NAME AND SIGNATURE:** *STUART CASCIANO*

**PRINT Name of SAMPLER:** *STUART CASCIANO*

**SIGNATURE of SAMPLER:** *[Signature]*

**DATE SIGNED (MM/DD/YYYY):** *5/23/21*

**Temp in °C:** *10.00*

**Received on Top (Y/N):** *Y*

**Custody (Y/N):** *Y*

**Beated Cooler (Y/N):** *Y*

**Samples Intact (Y/N):** *Y*

ORIGINAL

\*Important Note: By signing this form you are accepting Pace's NET 30 day payment terms and agreeing to the terms of the Chain-of-Custody Agreement.



# CHAIN-OF-CUSTODY / Analytical Request Document

The Chain-of-Custody is a LEGAL DOCUMENT. All relevant fields must be completed accurately.

**Section A:** Required Client Information  
 Company: **MANDELL ENVIRONMENTAL**  
 Address: **401 MANHATTAN BLVD**  
 Suite **102, TOTOWAUNGTON NJ 07066**  
 Email To: **MANDELL@ENVIRONMENTAL.COM**  
 Phone: **908-755-8774**  
 Requested Due Date/Time: **5 DAY**

**Section B:** Required Project Information  
 Report To: **MANDELL ENV.**  
 Copy To: **MANDELL ENV.**  
 Purchase Order No.: **475 DUNSTON AVE**  
 Project Name: **UNSO-475 DUNSTON AVE**  
 Project Number: **NEWARK NJ**

**Section C:** Invoice Information  
 Attention: **MANDELL ENV.**  
 Address: **5 BAY**  
 Fax/Club Reference: **REGULATORY AGENCY**  
 Regulatory Manager: **REGULATORY AGENCY**  
 Site Location: **GROUND WATER**  **DRINKING WATER**   
 **UST**  **RORA**  **OTHER**  
 Page: **3** of **3**  
 Project No./ Lab ID: **2054211**

#	SAMPLE ID (4-2, 0-1, A) Sample IDs MUST BE UNIQUE	Matrix Code MATRIX / CODE Drinking Water Water Waste Water Product Soil/Solid Oil Wipe Air Tissue Other	COLLECTED		DATE	TIME	SAMPLE TYPE (Grab or Comp)	MATRIX CODE (See valid codes on form)	# OF CONTAINERS	PRESERVATIVES	ANALYSTS Test ↑	DATE	TIME	ACCEPTED BY / AFFILIATION	DATE	TIME	TEMPERATURE	RECEIVED ON	CUSTODY	SAMPLE CONDITIONS	
			COMPOSITE START	COMPOSITE FINISH																	
1	V-25 OUTLET 43				9-23-2021		DUG		Unpreserved	Lead											
2	V-26 FOOD PIP 1																				
3	V-27 WATER COOL																				
4	V-28 WATER FOUNTAIN 2																				
5	V-29																				
6	V-30																				
7	V-31																				
8	V-32																				
9																					
10																					
11																					
12																					

**ADDITIONAL COMMENTS:** *[Handwritten signature]*

**REQUIREMENTS BY AFFILIATION:** *[Handwritten signature]* DATE: *5-4-2021*

**ACCEPTED BY / AFFILIATION:** *[Handwritten signature]* DATE: *5/12/2021* TIME: *10:00*

**TEMPERATURE:**

**RECEIVED ON:**

**CUSTODY:**

**SAMPLE CONDITIONS:**

**RESIDUAL CHLORINE (Y/N):**

**DATE SIGNED:** *5/12/2021*

**SIGNATURE OF SAMPLER:** *[Signature]*

**PRINT NAME OF SAMPLER:** **STUART CASANO**

**SAMPLER NAME AND SIGNATURE:**

**ORIGINAL**

\*Important Note: By signing this form you are accepting Face's NET 30 day payment terms and agreeing to late charges of 1.5% per month for any business not with us. 5/1/2021



Sample Condition Upon Receipt

WO#: 70172217

Client Name:

MEC

Project

PM: KMM

Due Date: 05/14/21

CLIENT: MEC

Courier:  Fed Ex  UPS  USPS  Client  Commercial  Pace  Other

Tracking #: \_\_\_\_\_

Custody Seal on Cooler/Box Present:  Yes  No Seals intact:  Yes  No

Packing Material:  Bubble Wrap  Bubble Bags  Ziploc  None  Other

Thermometer Used: TH091

Correction Factor: +0.0

Cooler Temperature(°C): 7.6

Cooler Temperature Corrected(°C): H.C

Temp should be above freezing to 6.0°C

USDA Regulated Soil (  N/A, water sample)

Date and Initials of person examining contents: KW 5/1/21

Did samples originate in a quarantine zone within the United States: AL, AR, CA, FL, GA, ID, LA, MS, NC, NM, NY, OK, OR, SC, TN, TX, or VA (check map)?  Yes  No

Did samples originate from a foreign source including Hawaii and Puerto Rico)?  Yes  No

If Yes to either question, fill out a Regulated Soil Checklist (F-LI-C-010) and include with SCUR/COC paperwork.

				COMMENTS:
Chain of Custody Present:	<input checked="" type="checkbox"/> Yes	<input type="checkbox"/> No		1.
Chain of Custody Filled Out:	<input checked="" type="checkbox"/> Yes	<input type="checkbox"/> No		2.
Chain of Custody Relinquished:	<input checked="" type="checkbox"/> Yes	<input type="checkbox"/> No		3.
Sampler Name & Signature on COC:	<input checked="" type="checkbox"/> Yes	<input type="checkbox"/> No	<input type="checkbox"/> N/A	4.
Samples Arrived within Hold Time:	<input checked="" type="checkbox"/> Yes	<input type="checkbox"/> No		5.
Short Hold Time Analysis (<72hr):	<input type="checkbox"/> Yes	<input checked="" type="checkbox"/> No		6.
Rush Turn Around Time Requested:	<input type="checkbox"/> Yes	<input checked="" type="checkbox"/> No		7.
Sufficient Volume: (Triple volume provided for)	<input checked="" type="checkbox"/> Yes	<input type="checkbox"/> No		8.
Correct Containers Used:	<input checked="" type="checkbox"/> Yes	<input type="checkbox"/> No		9.
-Pace Containers Used:	<input checked="" type="checkbox"/> Yes	<input type="checkbox"/> No		10.
Containers Intact:	<input checked="" type="checkbox"/> Yes	<input type="checkbox"/> No		11.
Filtered volume received for Dissolved tests	<input type="checkbox"/> Yes	<input type="checkbox"/> No	<input checked="" type="checkbox"/> N/A	Note if sediment is visible in the dissolved container.
Sample Labels match COC:	<input checked="" type="checkbox"/> Yes	<input type="checkbox"/> No		12.
-Includes date/time/ID, Matrix: SL <input checked="" type="checkbox"/> OIL				
All containers needing preservation have been checked?	<input checked="" type="checkbox"/> Yes	<input type="checkbox"/> No	<input type="checkbox"/> N/A	13.
pH paper Lot # <u>HL148894</u>				
All containers needing preservation are found to be in compliance with method recommendation? (HNO <sub>3</sub> , H <sub>2</sub> SO <sub>4</sub> , HCl, NaOH>9 Sulfide, NAOH>12 Cyanide)	<input checked="" type="checkbox"/> Yes	<input type="checkbox"/> No	<input type="checkbox"/> N/A	Sample #
Exceptions: VOA, Coliform, TOC/DOC, Oil and Grease, DRO/8015 (water).				
Per Method, VOA pH is checked after analysis				Initial when completed: _____ Lot # of added preservative: _____ Date/Time preservative added: _____
Samples checked for dechlorination: KI starch test strips Lot #	<input type="checkbox"/> Yes	<input type="checkbox"/> No	<input checked="" type="checkbox"/> N/A	14.
Residual chlorine strips Lot #				Positive for Res. Chlorine? Y N
SM 4500 CN samples checked for sulfide?	<input type="checkbox"/> Yes	<input type="checkbox"/> No	<input checked="" type="checkbox"/> N/A	15.
Lead Acetate Strips Lot #				
Headspace in VOA Vials (>6mm):	<input type="checkbox"/> Yes	<input type="checkbox"/> No	<input checked="" type="checkbox"/> N/A	16.
Trip Blank Present:	<input type="checkbox"/> Yes	<input type="checkbox"/> No	<input checked="" type="checkbox"/> N/A	17.
Trip Blank Custody Seals Present	<input type="checkbox"/> Yes	<input type="checkbox"/> No	<input checked="" type="checkbox"/> N/A	
Pace Trip Blank Lot # (if applicable): _____				

Client Notification/ Resolution:

Field Data Required? Y / N

Person Contacted: \_\_\_\_\_

Date/Time: \_\_\_\_\_

Comments/ Resolution: \_\_\_\_\_

\_\_\_\_\_  
\_\_\_\_\_  
\_\_\_\_\_

### Attachment C - Drinking Water Outlet Inventory

(Complete for each school)

Name of School: UNIFED VALSARDE SERVICES ORGANIZATION Address: 475 IRVINGTON AVENUE NEWARK, NJ

Grade Levels: \_\_\_\_\_ Year School Constructed: \_\_\_\_\_ Renovated/Adds: \_\_\_\_\_

Individual school project officer Name/Signature: \_\_\_\_\_ Date Completed: \_\_\_\_\_

#	Type	Location	Code	Operational <sup>2</sup> (Y/N)	Signs of Corrosion <sup>3</sup> (Y/N)	Filter <sup>4</sup> (Y/N)	Brass Fittings, Faucets or valves? (Y/N)	Aerator/Screen (Y/N)	Motion Activated (Y/N)	Chiller (Y/N)	Water Cooler		Co	
											Make	Model		
1	IWF	KITCHEN		Y	N	N	N	Y	N	N				
2	}	ROOM 113												
3		"												
4		"												
5		ROOM 112												
6		"												
7		"												
8		STAFF BANT												
9		ROOM 105												
10		"												
11		↓	"											

IWF = WATER FOUNTAIN, IJWF = INDOOR WATER FAUCET, FP = FOOD PREPARATION.

<sup>1</sup> Number outlets starting at the closest outlet to the Point of Entry (POE).  
<sup>2</sup> Document if permanently or temporarily out of service on the Attachment B- Plumbing Profile.  
<sup>3</sup> Signs of corrosion detected, such as but not limited to frequent leaks, rust-colored water, or stained fixtures, dishes, or laundry.  
<sup>4</sup> Document on Attachment D- Filter Inventory.



### Attachment C - Drinking Water Outlet Inventory

(Complete for each school)

Name of School: UNIFED VALSARTZ SERVICES ORGANIZATION Address: 475 IRVINGTON AVENUE NEWARK, NJ

Grade Levels: \_\_\_\_\_ Year School Constructed: \_\_\_\_\_ Renovated/Additions: \_\_\_\_\_

Individual school project officer Name/Signature: \_\_\_\_\_ Date Completed: \_\_\_\_\_

#	Type	Location	Code	Operational <sup>2</sup> (Y/N)	Signs of Corrosion <sup>3</sup> (Y/N)	Filter <sup>4</sup> (Y/N)	Brass Fittings, Faucets or valves? (Y/N)	Aerator/Screen (Y/N)	Motion Activated (Y/N)	Chiller (Y/N)	Water Cooler		Co
											Make	Model	
12	IWF	ROOM 104		Y	N	N	N	Y	N	N			
13		" "											
14		" "											
15		ROOM 103											
16		" "											
17		" "											
18		ROOM 102											
19		" "											
20		" "											
21		ROOM 101											
22		" "											

IWF = WATER FOUNTAIN, IJWF = INDOOR WATER FAUCET, FP FOOD PREPARATION.

<sup>1</sup> Number outlets starting at the closest outlet to the Point of Entry (POE).  
<sup>2</sup> Document if permanently or temporarily out of service on the Attachment B- Plumbing Profile.  
<sup>3</sup> Signs of corrosion detected, such as but not limited to frequent leaks, rust-colored water, or stained fixtures, dishes, or laundry.  
<sup>4</sup> Document on Attachment D- Filter Inventory.

### Attachment C - Drinking Water Outlet Inventory

(Complete for each school)

Name of School: UNIFED VALSOUTH SERVICES Address: 475 IRVINGTON AVENUE  
ORLANDAVILLE NEWARK, NJ

Grade Levels: \_\_\_\_\_ Year School Constructed: \_\_\_\_\_ Renovated/Additions: \_\_\_\_\_

Individual school project officer Name/Signature: \_\_\_\_\_ Date Completed: \_\_\_\_\_

#	Type	Location	Code	Operational <sup>2</sup> (Y/N)	Signs of Corrosion <sup>3</sup> (Y/N)	Filter <sup>4</sup> (Y/N)	Brass Fittings, Faucets or valves? (Y/N)	Aerator/Screen (Y/N)	Motion Activated (Y/N)	Chiller (Y/N)	Water Cooler	
											Make	Model
<del>22</del>												
23	IWF	Room 101		Y	N		N	Y	N			
24		Room 209										
25		" "										
26		" "										
27		Room 208										
28		" "										
29		" "										
30		2FL STAFF BARR										
31		Room 205										
32		" "										

IWF = WATER FOUNTAIN | IWF = INDOOR WATER FAULT | FP FOOD PREPARATION

<sup>1</sup> Number outlets starting at the closest outlet to the Point of Entry (POE).  
<sup>2</sup> Document if permanently or temporarily out of service on the Attachment B- Plumbing Profile.  
<sup>3</sup> Signs of corrosion detected, such as but not limited to frequent leaks, rust-colored water, or stained fixtures, dishes, or laundry.  
<sup>4</sup> Document on Attachment D- Filter Inventory.

### Attachment C - Drinking Water Outlet Inventory

(Complete for each school)

Name of School: UNIFED VALSOUTH SERVICES Address: 475 IRVINGTON AVENUE  
ORLANDAVILLE NEWARK, NJ

Grade Levels: \_\_\_\_\_ Year School Constructed: \_\_\_\_\_ Renovated/Additions: \_\_\_\_\_

Individual school project officer Name/Signature: \_\_\_\_\_ Date Completed: \_\_\_\_\_

#	Type	Location	Code	Operational <sup>2</sup> (Y/N)	Signs of Corrosion <sup>3</sup> (Y/N)	Filter <sup>4</sup> (Y/N)	Brass Fittings, Faucets or valves? (Y/N)	Aerator/ Screen (Y/N)	Motion Activated (Y/N)	Chiller (Y/N)	Water Cooler	
											Make	Model
33	IWF	ROOM 205		Y	N	N	N	Y	N			
34		ROOM 204										
35		" "										
36		" "										
37		ROOM 203										
38		" "										
39		" "										
40		ROOM 202										
41		" "										
42		" "										
43		ROOM 201										

IWF = WATER FOUNTAIN | IWF = INDOOR WATER FAUCET | FP FOOD PREPARATION.

<sup>1</sup> Number outlets starting at the closest outlet to the Point of Entry (POE).  
<sup>2</sup> Document if permanently or temporarily out of service on the Attachment B- Plumbing Profile.  
<sup>3</sup> Signs of corrosion detected, such as but not limited to frequent leaks, rust-colored water, or stained fixtures, dishes, or laundry.  
<sup>4</sup> Document on Attachment D- Filter Inventory.

### Attachment C - Drinking Water Outlet Inventory

(Complete for each school)

Name of School: UNIFIED VALSERT SERVICES Address: 475 IRVINGTON AVENUE  
NEWARK, NJ  
ORDEANIZATION

Grade Levels: \_\_\_\_\_ Year School Constructed: \_\_\_\_\_ Renovated/Additions: \_\_\_\_\_

Individual school project officer Name/Signature: \_\_\_\_\_ Date Completed: \_\_\_\_\_

#	Type	Location	Code	Operational? <sup>2</sup> (Y/N)	Signs of Corrosion <sup>3</sup> (Y/N)	Filter <sup>4</sup> (Y/N)	Brass Fittings, Faucets or valves? (Y/N)	Aerator/Screen (Y/N)	Motion Activated (Y/N)	Chiller (Y/N)	Water Cooler		Co
											Make	Model	
44	IWF	ROOM 201		Y	N	N	N	N	N				
45	IWF	" "											
FP1	FP	KITCHEN											
FP2	"	"											
FP3	"	STAFF LOUNGE											
F1	WF	ROOM 113		OFF									
F2		ROOM 112		OFF									
F3		ROOM 105		OFF									
F4		ROOM 104		OFF									
F5		ROOM 103		OFF									
F6		ROOM 102		Y									

IWF = WATER FOUNTAIN ; IWF = INDOOR WATER FAUCET FP FOOD PREPARATION.

<sup>1</sup> Number outlets starting at the closest outlet to the Point of Entry (POE).  
<sup>2</sup> Document if permanently or temporarily out of service on the Attachment B- Plumbing Profile.  
<sup>3</sup> Signs of corrosion detected, such as but not limited to frequent leaks, rust-colored water, or stained fixtures, dishes, or laundry.  
<sup>4</sup> Document on Attachment D- Filter Inventory.

### Attachment C - Drinking Water Outlet Inventory

(Complete for each school)

Name of School: UNIFIBD VALSOUTH SERVICES ORGANIZATION Address: 475 IRVINGTON AVENUE  
NEWARK, NJ

Grade Levels: \_\_\_\_\_ Year School Constructed: \_\_\_\_\_ Renovated/Additions: \_\_\_\_\_

Individual school project officer Name/Signature: \_\_\_\_\_ Date Completed: \_\_\_\_\_

#	Type	Location	Code	Operational <sup>2</sup> (Y/N)	Signs of Corrosion <sup>3</sup> (Y/N)	Filter <sup>4</sup> (Y/N)	Brass Fittings, Faucets or valves? (Y/N)	Aerator/ Screen (Y/N)	Motion Activated (Y/N)	Chiller (Y/N)	Water Cooler		Co
											Make	Model	
F7	WF	ROOM 101		N	N	N	N	N	N				
F8		1 209		*N									
F9		1 208		*Y									
F10		1 203		*N									
F11		1 204		Y									
F12		1 203		*N									
F13		1 202		*N									
F14		1 201		Y									
WC	WC	STAFF LAUN		Y	N	N	N	N	N	Y		PURE WATER TECH	

WF = WATER FOUNTAIN | IWF = INDOOR WATER FAUCET | FP FOOD PREPARATION.  
 WC = WATER COOLER

<sup>1</sup> Number outlets starting at the closest outlet to the Point of Entry (POE).  
<sup>2</sup> Document if permanently or temporarily out of service on the Attachment B- Plumbing Profile.  
<sup>3</sup> Signs of corrosion detected, such as but not limited to frequent leaks, rust-colored water, or stained fixtures, dishes, or laundry.  
<sup>4</sup> Document on Attachment D- Filter Inventory.

Attachment D - Filter Inventory  
(Complete for each school)

Name of School: UNIFIED VALEBURG SERVICES Grade Levels: \_\_\_\_\_

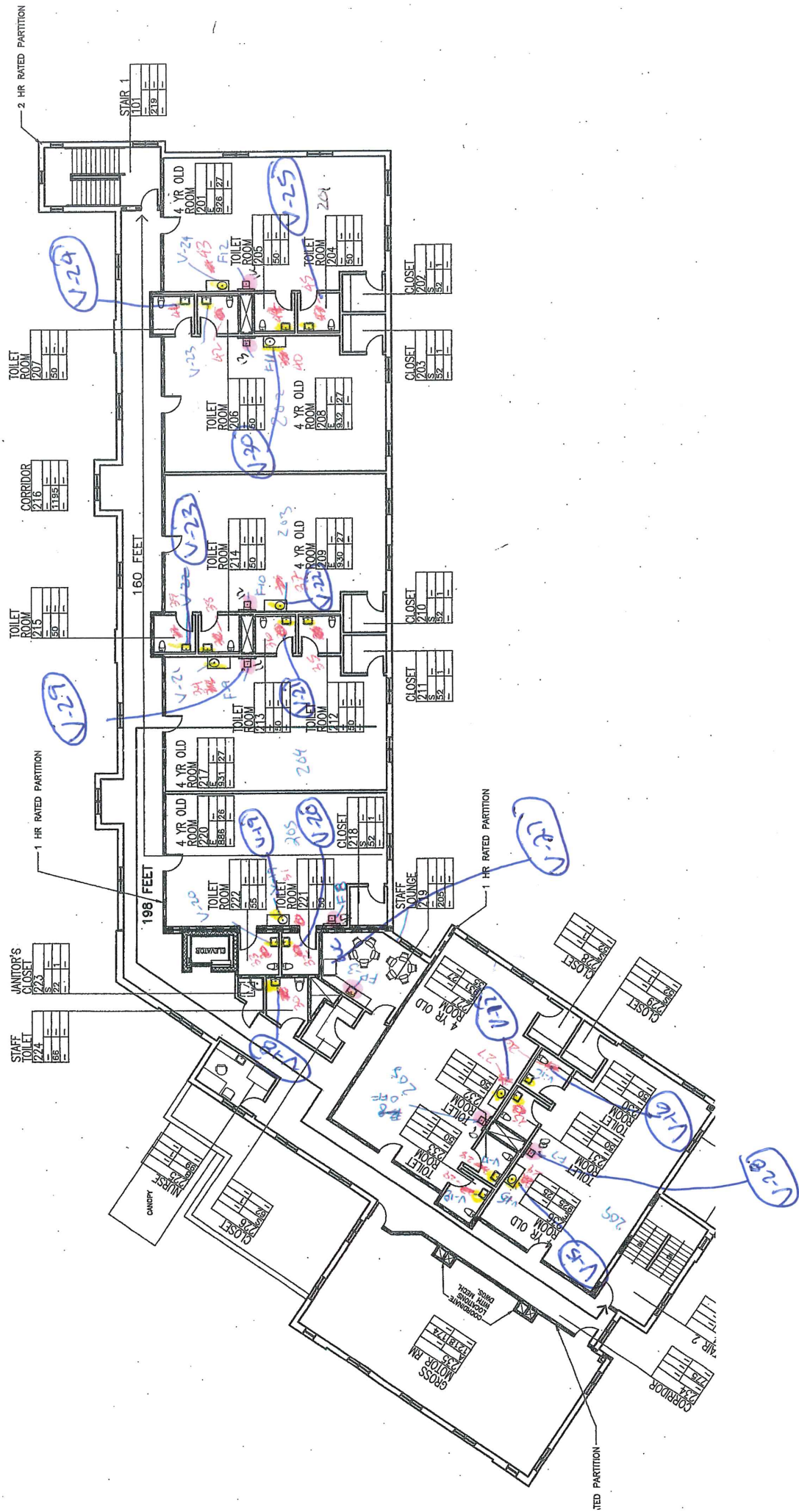
Address: 475 IRVINGTON AVE, NEWARK NJ

Individual School Project Officer Signature: \_\_\_\_\_ Date: \_\_\_\_\_

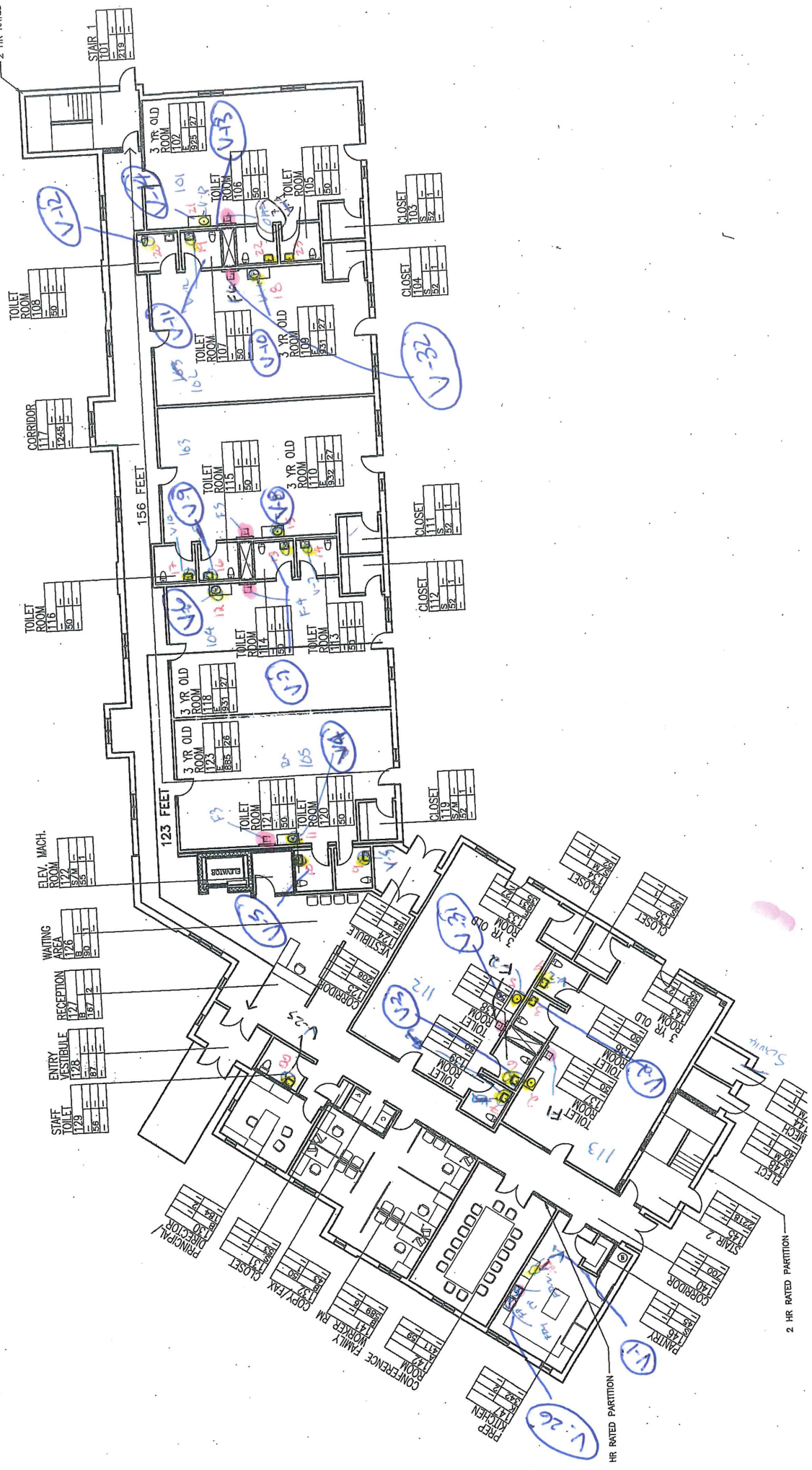
Sample Location / Code	Brand	Type (Make & Model)	Date Installed or Replaced	Replacement Frequency	NSF Certified for Lead Reduction Y/N
		NO FILTERS			



Second Fl.



2 HR RATED P/



First Floor

STAIR 1	101
	219

TOILET ROOM	108
	50

CORRIDOR	117
	1765

TOILET ROOM	116
	50

ELEV. MACH.	ROOM
	122
	824
	50

WAITING AREA	176
	8
	50

RECEPTION	177
	167
	2

ENTRY VESTIBULE	128
	67

STAFF TOILET	129
	50

PRINCIPAL	130
DIRECTOR	131
CLOSET	132
CLOSET	133

COPY RM	134
	135
	136
	137
	138
	139

CONFERENCE ROOM	140
FAMILY RM	141
WORKER RM	142
	143
	144
	145

PREP KITCHEN	146
	147
	148
	149
	150

HR RATED PARTITION

2 HR RATED PARTITION