

# MANAGEMENT COMMITTEE

## Terri Cameron, Chairperson



Terri's background is in Hospitality, an area of employment she really enjoyed but after 30 years she felt like a change. Terri then worked for 8 years in the Aged and Disability sector and loved it. Terri said that "working with people with disabilities made me more compassionate and gave me a better sense of self seeing I am making a difference".

Terri has been an active Volunteer in the West Wallsend community for over 35 years, starting in what was known as the School of Arts building (now SVNC) by opening a "Drop-In-Centre" for the local youth to meet. Other groups are sporting, playgroup, our local Museum, and the local Workers Club as a Director. Terri has been a volunteer of the Sugarvalley Neighbourhood Centre for the past 26 years.

## Mary deFries, Vice Chairperson



Mary, a Grandmother is Vice Chairperson of the Sugarvalley Neighbourhood Centre Management Committee and has been living in Edgeworth for the past fifty (50) Years. She worked as an Enrolled Nurse at Rankin Park Hospital and community nursing. Following retirement, Mary like many of her friends volunteered in the community and after becoming involved with the West Wallsend Combined Pensioners Association became Secretary of the Association.

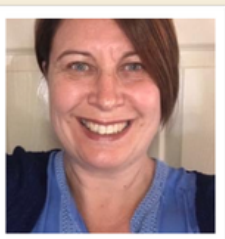
## Bob Broadfoot OAM JP, Treasurer



Bob a local born and bred, has been Treasurer of the Sugarvalley Neighbourhood Centre since 2011 and has served the community of West Wallsend, in a voluntary capacity, since 1963. His passion was electrical engineering and served 38 years in the mining industry with Coal and Allied Industries, retiring as Engineer in Charge of Electronics and Power Distribution.

Bob was awarded the Medal of the Order of Australia (OAM) on 26 January 2008 for 'Service to the community through leadership roles within the Federation of Community, Sporting and Workers Clubs and to the community of West Wallsend'. Five Life Memberships were conferred on him from organisations that he had been involved in.

## Roanne Walmsley, Secretary



Roanne Walmsley has an emergency services background, having served for 20 years around the Newcastle district. Roanne has worked at Sugarvalley Neighbourhood Centre since 2016 and has been a volunteer committee member since 2017.

For two years Roanne wrote grant submissions for SVNC as well as assisting other Neighbourhood Centres in the Hunter area. She is currently studying a Certificate IV in Leisure and Health and writes grants in a volunteer capacity for Sugarvalley and another non-profit on the Central Coast. Roanne is a creative person with any art related activities which have included murals and workshops.

## George Ditz, Committee Member



George was born and raised in West Wallsend and has deep roots in the local community. He worked as a fitter in the coal industry for over 30 years and brings a wealth of experience and practical knowledge to the Centre.

George loves his garden, cooking, and spending time with his family. He generously volunteers his time at Sugarvalley, running our food program every Friday. Known as the best cook on the BBQ, George's sense of humour and dedication make him a much-loved part of our team.

## Garry Gill, Committee Member



Garry has lived in the local area for many years and has a strong connection to the community. He worked with council for much of his career and brings a wealth of knowledge and experience to the Centre. Garry has a loving wife, Sue, two children, and is an adoring pop to his grandchildren.

Garry is friendly, community-minded, and always willing to lend a hand. We're very lucky to have him as part of our team.

## Sue Murphy, Committee Member



Sue is an Executive Coach with demonstrated experience working as a Human Resource practitioner and as a General Manager working in small to medium size organisations across public sector, private sector and family businesses. Industry experience includes IT, Financial Services, Management Consulting, Not for Profit, Local Government, Wine Industry, Manufacturing and Production and Commercial and Industrial Cleaning. Sue is passionate about helping people achieve their potential and coaches them to create an inspiring and motivating future.

Sue's approach to working with clients is to act as a 'sounding-board' to help you clarify your problems or concerns, discover the real issues and work with you to resolve them. You may be experiencing issues in relation to strategic decisions and the best way to propel your business forward. You may be experiencing conflict between senior managers or team members. You may need to have that courageous conversation with a trusted member of staff. Sue works with you to assist you gain the confidence and skills to enable exceptional outcomes.

Sue's capabilities include:

Executive Coaching across all tiers

Organisational Development and Change Management Facilitation

HR Project Management

Sue has attained a Diploma in Executive Coaching; Diploma in Management and Business Studies and is a member of the International Coaching Federation (ICF). Also accredited as a Social + Emotional Intelligence Coach through the Institute of Social & Emotional Intelligence Asia Pacific.