

### **Terri Cameron, Chairperson**



Terri's background is in Hospitality, an area of employment she really enjoyed but after 30 years she felt like a change. Terri then worked for 8 years in the Aged and Disability sector and loved it, Terri said that "working with people with disabilities made me more compassionate and gave me a better sense of self seeing I am making a difference". Terri has been an active Volunteer the West Wallsend community for over 35 years starting in what was known as the School of Arts building (now SVNC) by opening a "Drop-In-Centre" for the local youth to meet. Other groups are sporting, playgroup, our local Museum and the local Workers Club as a Director. Terri has been a volunteer of the Sugarvalley Neighbourhood Centre for the past 26 years.

### **Mary deFries, Vice Chairperson**



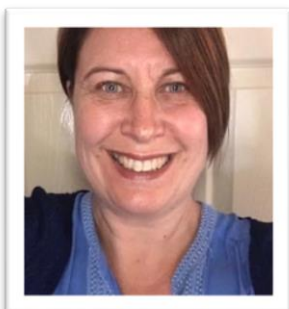
Mary, a Grandmother is Vice Chairperson of the Sugarvalley Neighbourhood Centre Management Committee and has been living in Edgeworth for the past fifty (50) Years. She worked as an Enrolled Nurse in Rankin Park Hospital and community nursing. Following retirement Mary like many of her friends volunteered in the community and after becoming involved with the West Wallsend Combined Pensioners Association became Secretary of the Association.

### **Bob Broadfoot OAM JP, Treasurer**



Bob a local born and bred, has been Treasurer of the Sugarvalley Neighbourhood Centre since 2011 and has served the community of West Wallsend, in a voluntary capacity, since 1963. His passion was electrical engineering and served 38 years in the mining industry with Coal and Allied Industries, retiring as Engineer in Charge of Electronics and Power Distribution.

### **Roanne Walmsley, Secretary**



Roanne Walmsley has an emergency services background, having served for 26 years around the Newcastle district. Roanne has worked at Sugarvalley Neighbourhood Centre since 2016 and has been a volunteer committee member since 2017. For 2 years Roanne wrote grant submissions for SVNC as well as assisting other Neighbourhood Centres in the Hunter area. She is currently studying a Certificate IV in Leisure and Health and writes grants in a volunteer capacity for Sugarvalley and another non-profit on the Central Coast. Roanne is a creative person with any art related activities which

have included murals and workshops. She enjoys painting canvasses, terracotta pots and gardening. Roanne lives with her two teenaged boys.

**Jodie Ryan JP, Committee Member**



Jodie currently works in the field of Service Improvement in social housing. Jodie has a passion for equity and social justice and has been on the board at Sugarvalley for eight years. Jodie's background includes working in a research and funding environment at several Australian universities in addition to public sector roles in equity and diversity. Before becoming a board member Jodie worked at Sugarvalley for a year. This gave her an insight into the incredible outcomes a dedicated grassroots organisation can achieve. Jodie said: 'I have seen many instances where Sugarvalley has had a significant impact on a person's life and changed the course they were on. Nothing could be more rewarding than supporting the incredible staff who achieve these outcomes'.

**George Ditz, Committee Member**



George was born and raised in West Wallsend. He is a fitter and worked in local coal industry for 30 years.

George loves his garden, cooking and his family, and volunteers a lot of his time with us at Sugarvalley. He is the best cook on the BBQ and runs the food program at Sugarvalley every Friday.

George is lots of fun and we are grateful to have him on our team.

**John Doig, RFD, JP, Committee Member**



John had an extensive career in administrative, management and executive roles within the public and private sector, primarily in local government, hospital administration, club administration and defence. This was coupled with a long part time military career leading to command and leadership positions, reaching senior officer rank.

He has always taken an active interest in the communities in which he has lived, being involved in junior and senior sports, service clubs, licenced clubs, ex-service organisations, not for profit groups and charities; having held positions of patron, chairman, secretary, and treasurer, and continuing to serve in these roles both locally and further afield. John has also had lengthy service on the boards of several licenced clubs.