

ARNE HOMES
CUSTOM CRAFTED HOMES



SUMMERS *Crossing*

HAWK POINT, MO 63349

COMMUNITY HIGHLIGHTS

- 1.6-3 Acre homesites
- Wooded lots
- Paved streets
- Underground utilities
- Community well
- Troy R-III School District
- Just West of Troy



COMMUNITY RESTRICTIONS

- 1,800sqft min. Ranch homes
 - 2,000sqft min 1.5+ story homes
 - 2 car attached garage minimum
 - 50% minimum of brick or stone exterior
- Restrictions available upon request.***

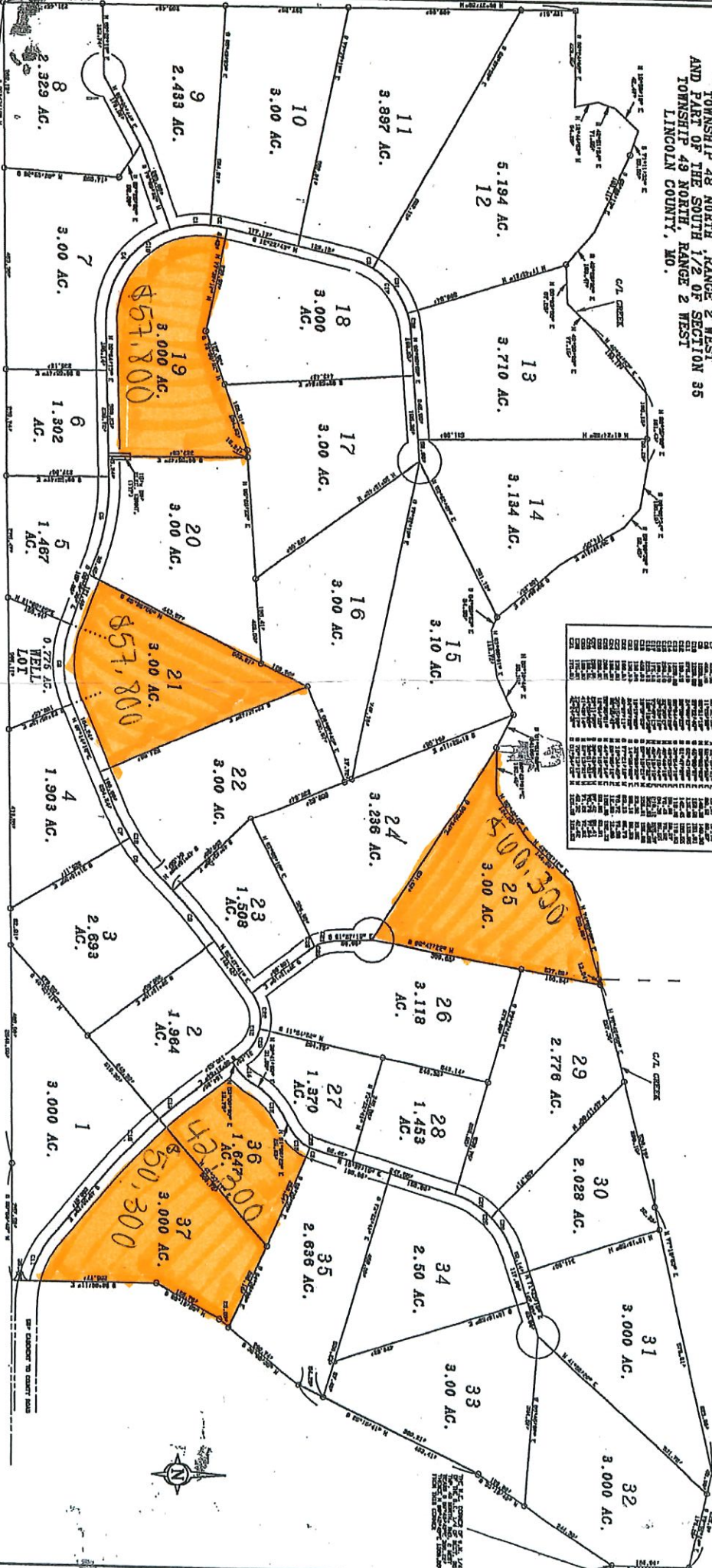
Contact Us!

636-474-9093

INFO@ARNE-HOMES.COM

WWW.ARNECUSTOMHOMES.COM

"SUMMERS CROSSING"
 PART OF THE NORTH 1/2 OF SECTION 2
 TOWNSHIP 48 NORTH, RANGE 2 WEST
 AND PART OF THE SOUTH 1/2 OF SECTION 35
 TOWNSHIP 49 NORTH, RANGE 2 WEST
 LINCOLN COUNTY, MO.



Lot No.	Acres	Handwritten Value
19	3.000	\$57,800
21	3.000	\$57,800
25	3.000	\$100,300
36	1.647	\$43,000
37	3.000	\$50,300

FITCH AND ASSOC. ENGINEERS & SURVEYORS
 PIONEER COUNTY SURVEYOR

FITCH AND ASSOC., 308 E. CENTER ST., TROY, MO. 64579 (417) 439-4188
 LICENSE NO. 13237
 DATE 3-11-84

NOTE
 ALL LOT LINES HAVE A 15.9' x 60.0' METRICAL EASEMENT AS SHOWN (LTP) BETWEEN LOTS 19 AND 20

NOTE
 FRONT LOT CORNERS ARE SET AT 60 FT. O/S AND 150 FT. O/S

CLASS OF SURVEY IS
 RURAL

