

2022
2023




LOOK FOR
YOUR CHOICES,
PICK THE BEST ONE,
THEN GO WITH IT



www.hellodmax.com info@dmax.biz

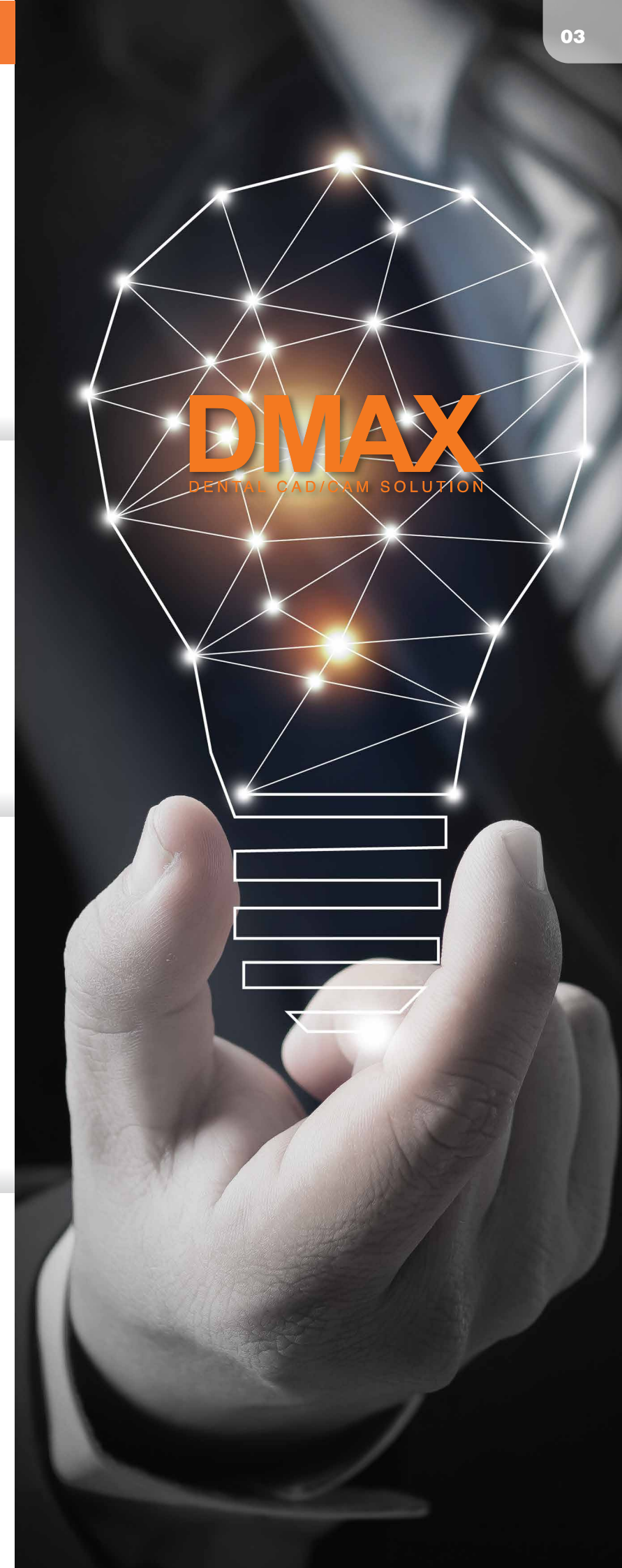
DMAX
DENTAL CAD/CAM SOLUTION



-  **Meet a “variety of product line”!**
DMAX is always committed to improve the quality of Dental CAD/CAM material
-  **Meet the “new line of products”!**
DMAX is leading the fast-changing dental industry with high quality products, professionalism and responsiveness.
-  **Meet the “HAPPY DMAX”**
We strive to make our customers happy in everything we do.

CONTENTS

Multi Layer SMART	04
Multi Layer HYBRID	06
Multi Layer OMEGA	07
OMEGA	08
ALPHA	09
NATURA HT	10
NATURA OPAQUE	11
Summary NATURA Z-ZIRCONIA	12
COLORING LIQUID CLASSIC	14
COZI Stain System	16
SUPER GREEN WAX	18
3D MAX Printing Resin	19
K Scan Spray	20
EASY SCAN PEN	21
EASY SCAN POWDER	21
TORNADO CAD/CAM Miling Tools	22
DMAX Zirconia Surgical kit	23
EVERY CLEAN	24
ZIRFACE	26





MULTILAYER SMART

FLEXURAL STRENGTH

1100 MPa

TRANSLUCENCY

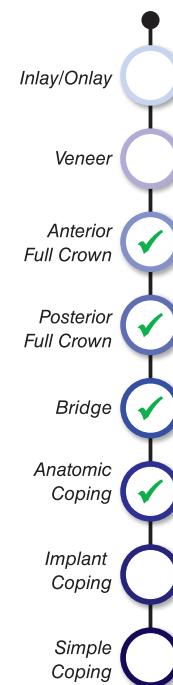
48%16 vita shades available
with simple dipping**SHADE****A0**

■ Multi layer Smart is a new concept zirconia block that allows users to get a natural gradation effect through different absorption rates of the upper and lower layers during the color liquid dipping process.

It is DMAX's best-seller that can innovatively reduce the inventory burden by creating 16 vita shades with simple dipping procedure.

■ It is good for both anterior and posterior full crown- single and bridge- as it has sufficient strength as well as natural shade.

■ To make the occlusal/incisal surface transparent, first brush with only one type of liquid, such as Enamel or Ice Gray or Ice Blue, and then dip it in the dentin color.



■ **Innovative white multi layer block that can be made into all 16 vita shade multi layer blocks in combination with Dmax exclusive dipping liquid.**

Time Saving: Create 16 vita shades with simple dipping

■ **Great cost-saving solution for dental labs**

There is no need to stock all 16 vita shade blocks, only smart block needs to be stocked.



***Classic Dipping Liquid**
16 VITA Shades

Use effect liquid (Ice Blue, Ice Gray, Enamel) to achieve the appropriate effect.

01



02

Select the desired liquid for body and dip for 15 seconds, and then rinse with water for about 1 second.



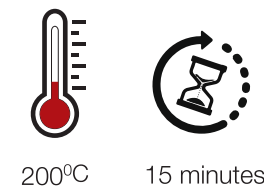
03

After dipping, use a facial tissue to remove the remaining moisture



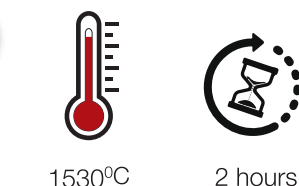
04

Dry using a dryer (200°C for 15 minutes)



05

Sinter under the condition of maintaining the maximum temperature of 1530°C for 2 hours.



06

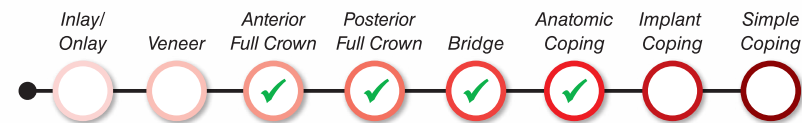


MULTILAYER HYBRID

■ Multi Layer Hybrid is a zirconia block with excellent strength and transparency. It is a full crown block with natural gradation effect created through multiple layers with different transparencies from 1200 MPa in the lower layer to 800 MPa in the upper layer.

■ All 16 vita shades are available.

■ Due to the high transparency of the occlusal/incisal surface and the natural shade of the margin part, anyone can create a satisfactory full crown without coloring. You just need to select a pre-shaded block from 16 vita shades, mill the crown and sinter it, so no coloring is required. It saves a significant amount of time and work required for coloring and drying.



TRANSLUCENCY
45 ~ 51%

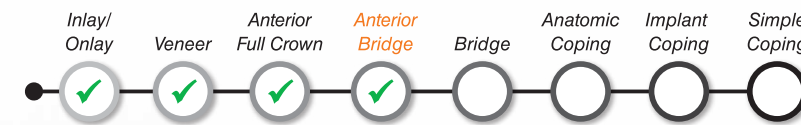
FLEXURAL STRENGTH
800 ~ 1200 MPa

All 16 Vita shades



MULTILAYER OMEGA

■ Multi Layer Omega is a multi-layer block optimized for anterior full crown with excellent transparency and natural gradation.



■ The strength of 800MPa is relatively weak, but compared to other highly transparent dental materials such as glass or resin, it is strong. You can get the great results with just a little stain glazing after sintering instead of coloring work. If you add a little coloring work, you can get even better results. Can be used for up to six anterior bridges.

TRANSLUCENCY
51%

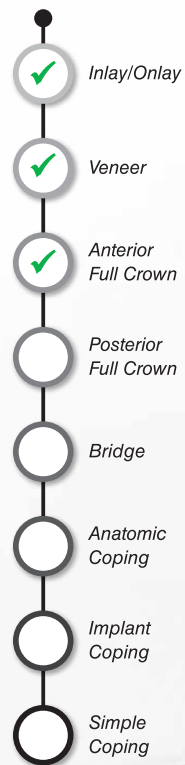
FLEXURAL STRENGTH
800 MPa

SHADE **A1** **A2**



OMEGA

- Omega is a zirconia block dedicated to the anterior full crown and inlay which has high degree of transparency.
- Despite its high transparency, it has a good strength of 800MPa.



TRANSLUCENCY

51%

FLEXURAL STRENGTH

800 MPa

SHADE

A0**A1****A2**

- ZIRFACE is a zirconia surface treatment solution composed of zirconia particles as the main component.
- You can get 2.5 times higher adhesive strength with Zirface than Acid Etching, and it is also safer because it does not contain acid.

ALPHA

- Alpha is DMAX's best-selling zirconia block. It has a very strong strength of 1200MPa while still maintaining excellent transparency and shade. Suitable for any case. Since it is a pre-shaded block, anyone can create an excellent full crown with minimal coloring work.

- All 16 vita shades are available.

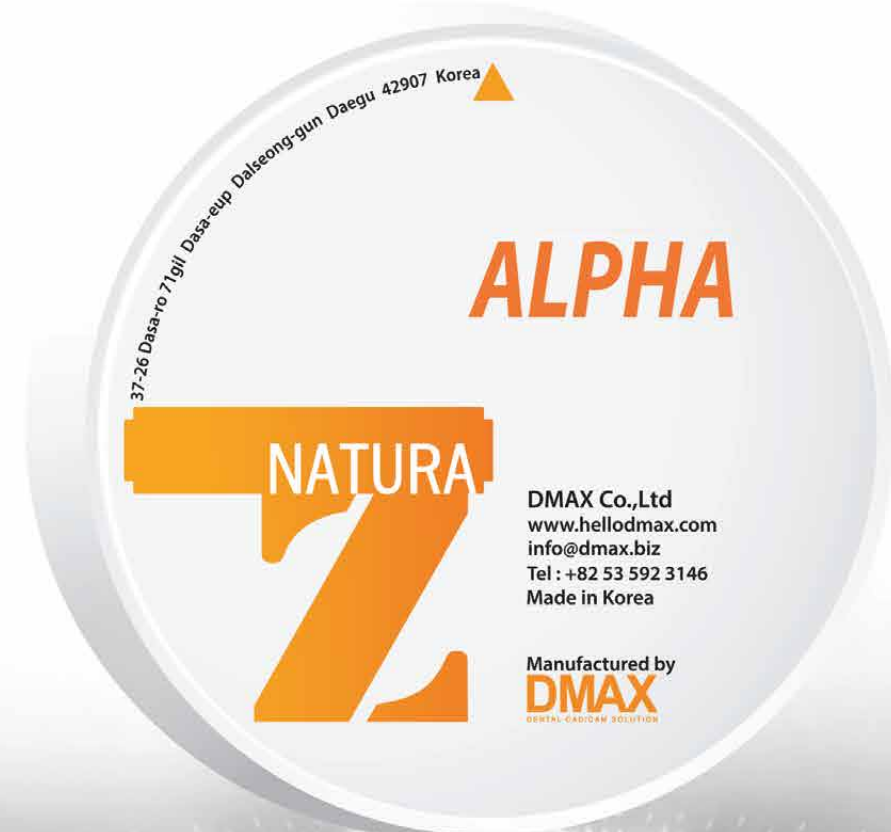
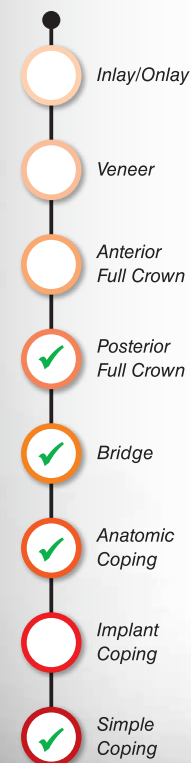
TRANSLUCENCY

46%

FLEXURAL STRENGTH

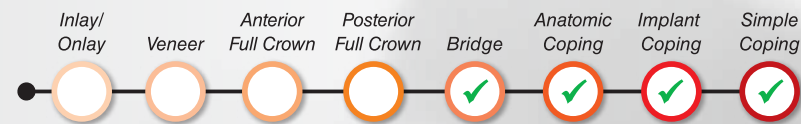
1200 MPa

SHADE

A0**All 16 vita shades**

NATURA HT

■ Natura HT zirconia block is suitable for coping as it has the highest strength of about 1300 MPa. The superior strength and mild transparency make it suitable for anatomic coping bridge which need cutback design.



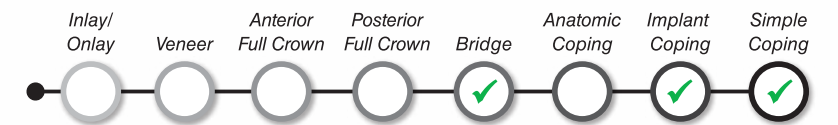
TRANSLUCENCY

42%

FLEXURAL STRENGTH

1300 MPa

SHADE A0



OPAQUE NATURA

- Natura Opaque is the most opaque zirconia block among DMAX's zirconia blocks.
- It is suitable for implant coping as its strength is 1300 MPa.
- Can be used to block out the discolored teeth or metal color
- Suitable for making zirconia link abutments



FLEXURAL STRENGTH

1300 MPa

TRANSLUCENCY








39%

SHADE A0



MULTI LAYER

MONO LAYER

MODEL	INDICATIONS								STRENGTH (MPA)	TRANS.	AVAILABLE SHADE	13
	Inlay, Onlay	Veneer	Anterior Full Crown	Posterior Full Crown	Posterior Bridge	Anterior Bridge	Anatomic Coping	Implant Coping	Simple Coping			
			✓	✓	✓	✓	✓			1100	48%	<div><div>A0</div><div>All 16 vita shades available with simple dipping</div></div>
			✓	✓	✓	✓	✓			800 ~ 1200	45 ~ 51%	<div><div>A1A2A3A3.5A4B1B2B3B4</div><div>C1C2C3C4D2D3D4</div></div>
	✓	✓	✓			✓				800	51%	<div><div>A1A2</div></div>
	✓	✓	✓							800	51%	<div><div>A0A1A2</div></div>
				✓	✓	✓	✓		✓	1200	46%	<div><div>A0</div><div>A1A2A3A3.5A4B1B2B3B4</div><div>C1C2C3C4D2D3D4</div></div>
					✓	✓	✓	✓	✓	1300	42%	<div><div>A0</div></div>
					✓	✓		✓	✓	1300	39%	<div><div>A0</div></div>

CLASSIC EFFECT LIQUID 30ml

- If you use liquid before sintering, a more natural effect can be achieved on occlusal/incisal surface.
- A good control of the liquid can maximize the aesthetic control of the zirconia prosthesis.

 Brown	 Ice Blue
 Orange Brown	 Blue
 Orange Yellow	 Dark Blue
 Fluorescence	 Ice Gray
 White Plus	 Gray Violet
 White	 Dark Gray
 Pink	 Enamel

CLASSIC BRUSHING LIQUID 30ml

- Can be used for other brands zirconia block
- All 16 vita shades

TIPS FOR COLORING

1. Check the block color first

Please check the color of the block carefully before using the coloring liquid on a pre-shaded block.

2. Dipping technique

With dipping liquid, you can easily get the color you want. For example, if you use A1 shade block, you can use A1 shade liquid to make A2 color crown before sintering. Additional coloring can be done after sintering to match shade in more detail.

3. Brushing technique

Brushing method is basically the same technique used for porcelain build up and staining. DMAX's special liquids are a unique solution for making natural-looking crowns.

4. Bridge cases

To get the same color on the pontic area, brush with water once, then follow the same steps with dipping or brushing. Otherwise, pontic can be little darker than regular crown or coping area because of thick volume.



CLASSIC DIPPING LIQUID 100ml



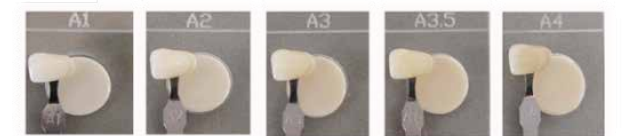
■ Dipping Liquid is used with the Multi Layer Smart block, and this is unique method and know-how of DMAX.

Because the absorption rate of the upper and lower layers is different, a natural gradation effect can be achieved.

16 vita shades can be implemented with simple dipping, which can innovatively reduce the inventory burden, and even unique color cases can be made faster and easier by dipping in desired color from 1 second to 15 seconds.

- All 16 vita shades

A Shade



B Shade



C Shade



D Shade



※ 2mm thick sample taps are sintered after dipped into base color liquid for 15sec & dried. no glazing or polishing applied.



WHAT IS COZI STAIN SYSTEM

- Micro build up
- Stain for Zirconia

COZI STAIN SYSTEM BOX:

- Product Component
- 25 kinds of color pastes
- Exclusive liquid 2ea

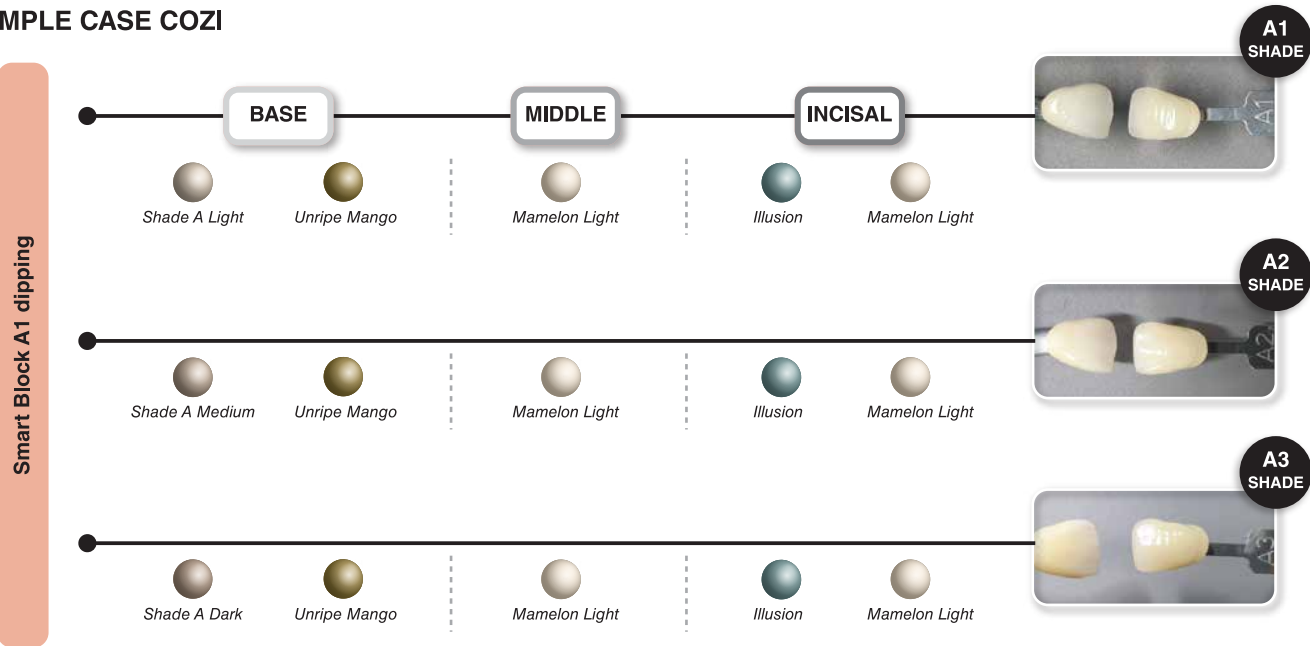
ADVANTAGE OF COZI STAIN SYSTEM



SINTERING PROGRAM FOR COZI

Start (°C)	Dry/ Pre Heat (min)	Heat Rate (°C/min)	High Temp (°C)	Hold (min)	Vacuum start (°C)	Vacuum stop (°C)
500	5	50	800 ~ 900	2	500	800 ~ 900

SAMPLE CASE COZI



PreheatingTemp.
500℃

Raise ofTemp.
50℃
HoldingTemp.
2min.

DryTime
5min.
FinalTemp.
900℃

Vacuum Start
500℃
Vacuum Stop
900℃

DENTIN SHADE

- Shade A Light (VITA shade A1)
- Shade A Medium (VITA shade A2, A3)
- Shade A Dark (VITA shade A3, A3.5)
- Shade C Light (VITA shade C1, C2)
- Shade C Dark (VITA shade C3, C4)

CERVICAL GROOVE & EFFECT

- Mamelon (Ivory Yellow)
- Spicy Curry (Reddish Yellow, (+) Shade A= Shade B)
- Unripe Mango (Green Yellow, (+) Shade A= Shade B)
- Lemon Yellow (Very Strong Light Yellow)
- Maroon Five (Kaki Brown, Groove & Crack Line)
- Red Brown (Orange Red Brown, Groove & Cervical)
- Dark Brown (Dark Brown, Groove & Crack Line)

INCISAL TRANSFER

- Illusion (Jade Green, Middle of Incisal)
- Blue Light (Side of Incisal, (+) Natural Glaze = more transfer)
- Gray Light (Incisal)

GINGIVAL & EFFECT

- Dark Pink (Gingival)
- Pink Light (Gingival)
- Deep Blue Sea (Gingival, (+) Pink = Reddish gingiva shade)
- Violet (Effect, (+) Pink = Reddish gingiva shade)
- Dark Gray (Effect & Crack Line)

OPAQUE & INCISAL

- Mamelon Light (Ivory white, Transfer, Increase brightness, Incisal)
- Snowy White (Opaque white, Increase brightness, Incisal)
- Halo (Incisal)
- Natural Glaze (Glaze, Low chroma, High Transfer)
- Add on Glazing (Modify)

SPECIAL



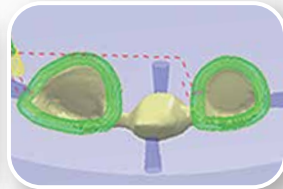
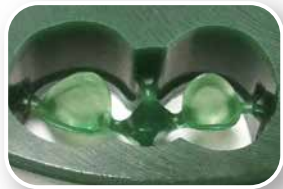
SUPER GREEN WAX

System:

Amann Girrbach	Dentium	RND
ARUM	I-Mes I-Core	VHF
Cerasys	Katana	Wieland
Cerec	Origin	Yena
Charley	Protech	Zirkonzahn
Dentaim	Roland	

Thickness:

10mm	16mm	22mm
12mm	18mm	25mm
14mm	20mm	



- Wax Block for casting is optimized for the milling process
- DMAX wax block is perfectly compatible with the jig used in processing of zirconia



3D MAX Printing Resin

3D MAX- Crown

- For permanent crown, inlay and onlay.
- Natural translucent color
- High strength and wear resistance
- A1,A2,A3,A3.5 shade is provided



3D MAX-TEMP

- For temporary crown and bridge
- Natural translucent color
- A1,A2,A3 shade is provided
- Flexural strength is more than 50MPa (ISO 10477)



3D MAX-SG

- For implant surgical guide
- Easy to operate because the material is transparent
- Sterilization with autoclave possible
- High precision printable materials allow for precision surgery



3D MAX PRINTING RESIN

Dental materials for 3D printing
Biocompatible materials
High precision printable materials
Light curing resin for DLP/SLA 3D Printer with a light spectrum of 385-405nm



K SCAN SPRAY

- K SCAN SPRAY is the most thin anti-light reflection spray for dental CAD/CAM scanning
- Non flammable

Quick and Easy Cleaning

Easily removed by steam cleaner

Best choice for custom abutment scan

Guarantee the best fit of zirconia crown and custom abutment

Reasonable Price

Better price with amount of 200g

Do not spray thickly

No need for thick application
Thin application over several times is more effective than one-time thick application

With K Scan, Reduce the working dust!

Reduced dust by 50% compared to existing product, using special solvents

PRECAUTIONS

Do not store in temperature above 40°C
Use ventilation when used in a closed room
Do not dispose into fire and keep it in a closed place.



EASY SCAN PEN

10ml



- Easy scan pen is for coating the surface of the crown to facilitate CAD/CAM scanning
- Non flammable

HOW TO USE

- Please shake well before use. For the first use, press pen point 5-10 times until pen tip get moisturize by liquid
- If the pen point gets dry during use, gently press the pen tip 1-2 times. Do not shake the pen after pressing the pen point. Liquid could splatter from the pen.
- Close the lid of the pen when it is not in use. Liquid may leak if the lid is open.
- The liquid in the pen will evaporate if the pen tip gets exposed for a long time.

EASY SCAN POWDER

10g



- Easy Scan powder is a powder-type scan coating for the preparation of CAD/CAM scan.
- Non flammable

HOW TO USE

- Brush or gently pat the powder to the object.
- The build up could become broken if patted with strong impact

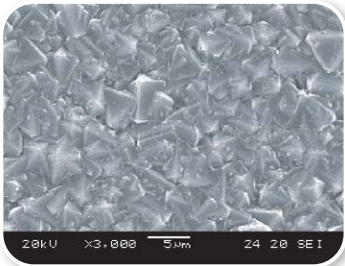


TORNADO CAD/CAM MILLING TOOLS

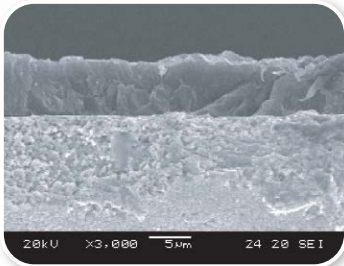


- Maintain a high-precision form even during long-term use
- Long life with new diamond coating technique (our own technology)
- Applied unique design technology
- Chip exhausted smoothly in working
- Tool shape is designed for diamond coating
- Use for zirconia and hybrid resin
- Round shape designed for smooth chip exhaust.
- Sharp edge for fast cutting

Diamond Coating Tools



Surface view of diamond coating



Fracture view of diamond coating

TIN Coating Tools

- Aluminum Titanium Nitride
- Use for Wax, PMMA, Zirconia
- Cutting in extreme condition material
- Good abrasion resistance
- Good corrosion resistance



DMAX tools can be used on any of the following systems

PRO-DEN DENTAIM

Diameter	Coating	Shank
D0.6	TIN	6
D1.0	TIN	6
D2.0	TIN	6
D0.6	DIA	6
D1.0	DIA	6
D2.0	DIA	6

AMANN

D0.3	DLC	3
D0.6	DIA	3
D1.0	DIA	3
D2.5	DIA	3

ARUM-100

D0.6	TIN	6
D1.0	DIA	6
D2.0	DIA	6

ZIRKONZHAN M1 (TITAN)

D2.0		6
D3.0		6

SIRONA

D1.0	DIA	3
D2.5	DIA	3

RND

Diameter	Coating	Shank
D0.6	DLC	6
D1.0	DIA	6
D2.0	DIA	6
D0.6	DIA	3
D1.0	DIA	3
D2.0	DIA	3

CHARLY

D0.5	TIN	3
D1.0	DIA	3
D1.5	DIA	3
D3.0	DIA	3

ARUM-150

D0.6	TIN	4
D1.0	DIA	4
D2.0	DIA	4

IMES ICORE

D0.6	TIN	3
D1.0	DIA	3
D2.5	DIA	3

ROLAND

Diameter	Coating	Shank
D0.6	TIN	4
D1.0	TIN	4
D2.0	TIN	4
D1.0	DIA	4
D2.0	DIA	4

ZIRKONZHAN M5

D1.0	DLC	3
D2.0	DLC	3
D1.0		3
D2.0		3

ARUM (TITAN)

D1.5		6
D2.0		6
D3.0		6

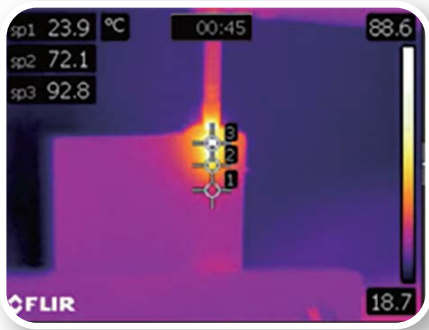
MANIX (TITAN)

D2.0		6
D3.0		6

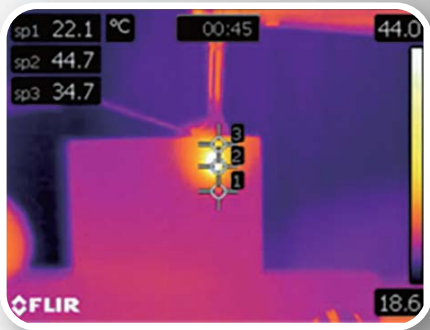
DMAX ZIRCONIA

SURGICAL KIT

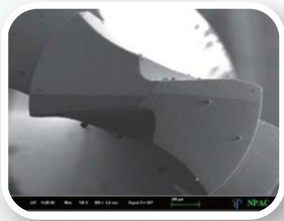
- **Superior abrasion resistance**
Much longer life time than metal drill
- **Excellent corrosion resistance**
No rust, chemically stable
- **Biocompatible materials**
There is no allergic reaction
- **Low thermal conductivity**
Minimize bone necrosis due to low frictional heat
- **After 30 times drilling, bone area heating test**



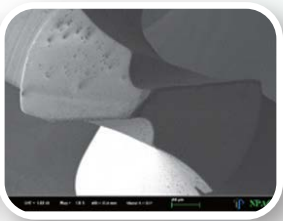
TrimRite Surgical Drill



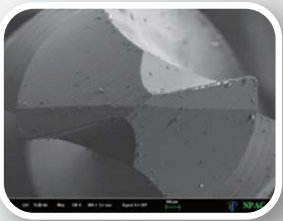
Zirconia Surgical Drill



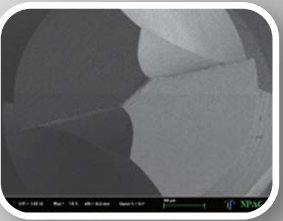
0 times drilling



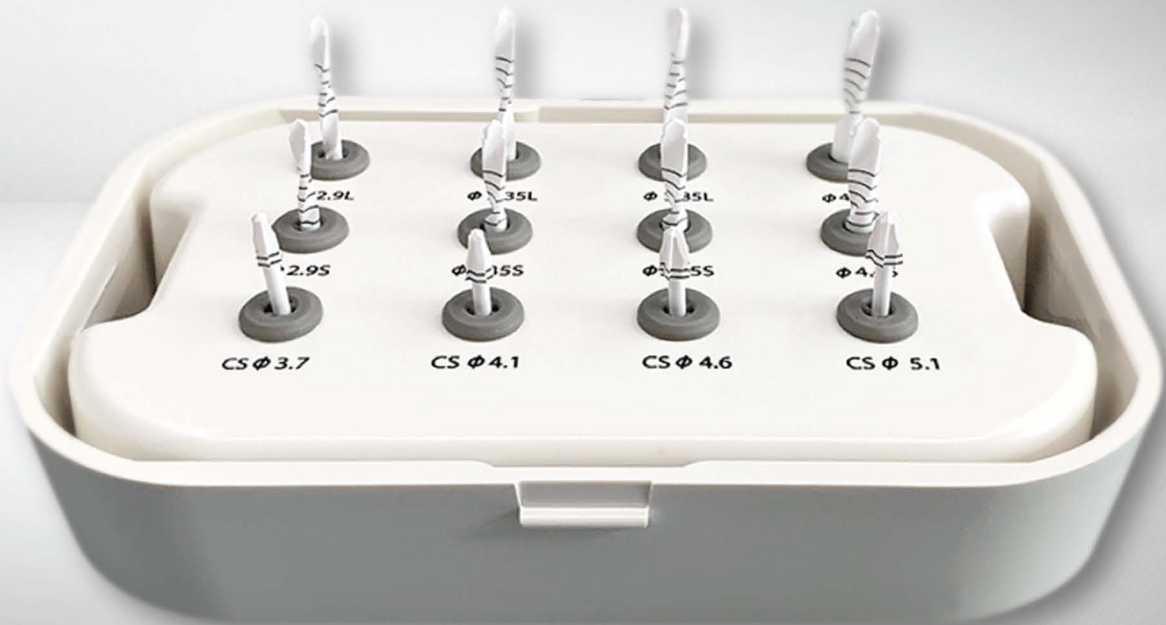
30 times drilling



0 times drilling



100 times drilling



EVERY CLEAN

■ The heating element of the sintering furnace used for a long time are easily oxidized due to the deposition of residues of the coloring liquid generated during sintering. The pale green light from the prosthesis after sintering is due to the phenomenon that the contaminants deposited on the heating element are colored on the zirconia prosthesis. Sintering furnace contamination is one of the causes of discoloration after sintering of zirconia prostheses.

■ Every Clean absorbs and removes contaminants inside the sintering furnace, so it helps users get the best sintering results. Routine cleaning of the sintering furnace according to instructions can prolong the longevity of the heating element as well as prevent pollution within the sintering furnace.

■ Every Clean consists of 12 bottles (100g each) with different marks for each month so that cleaning can be done on a monthly basis.



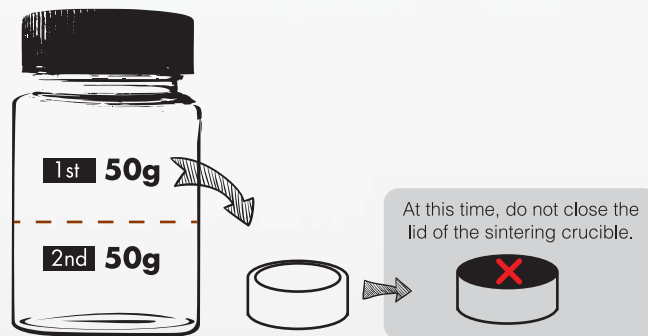
ORGANIZATIONAL CLEANING



Put date of cleaning on Everyclean tag enclosed in box and then hang/keep it on handle of sintering furnace, which enables you to do monthly cleaning.

Instructions

STEP 1 Apply 50g of Every Clean on the sintering crucible and spread them wide and even.



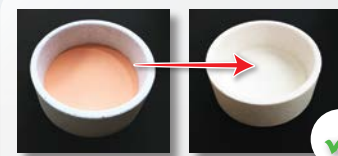
If the sintering crucible has a bead, make sure to remove the bead before applying Every Clean.

STEP 2

- For 2 hours, raise the temperature from room temperature to 1580 degrees, and then keep it at 1580 degrees for 30 minutes.
- After holding for 30 minutes, lower the temperature to room temperature for 2 hours.



STEP 3



If the inside of the sintering furnace is clean and free from pollutants, Every Clean will have turned from orange to white.

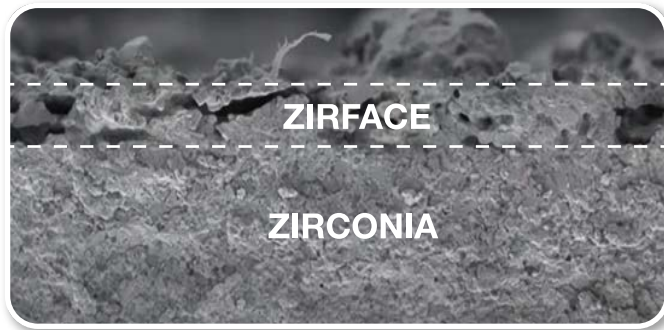


But if not, Every Clean will have turned to light green or light yellow.



ZIRFACE

- Zirface can resolve the disadvantages of ETCHING which are strong smell and long working time.
- It does not harm the health of users.



NANO TECHNOLOGY

Maximizes adhesion by large surface area by forming Micro Surface Irregularity (Roughness)



Zirconia with sintered state

The zirconia surface treated with ZIRFACE is coated with nano-sized zirconia particles (ZrO_2 Particles) to form a porous surface



After resin cement is applied

When the resin cement is applied, the porous surface and the resin cement are combined to maximize the adhesion of the zirconia prosthesis.

How to Use ZIRFACE

01

Remove foreign substances from the inner surface of the zirconia prosthesis using air.



Shake the container well about 10 times to mix the sediment in the container before use.

*The solution is black but turns white after sintering



Use the eye-dropper to get the intended amount to be used.

02



Apply once without any space on the inside of the prosthesis using a brush.

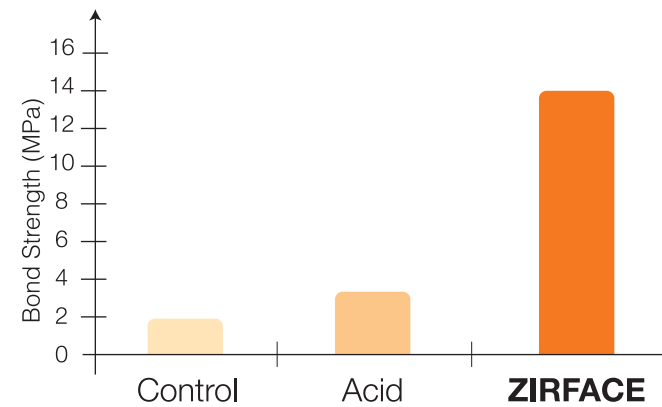
03



Sinter without a drying process.

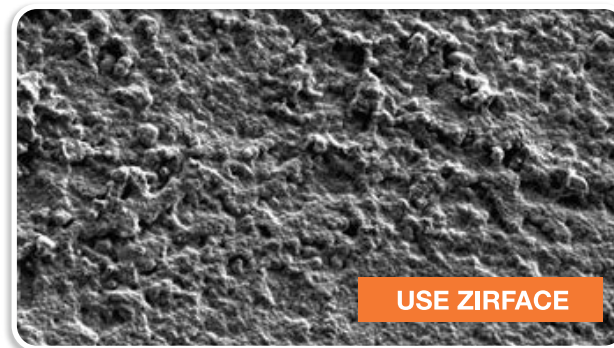
IMPROVED BONDING STRENGTH

According to the surface treatment study, the group to which ZIRFACE was applied showed a value 4 to 9 times higher bonding strength than that of the control and acid.



IMPROVED SURFACE ROUGHNESS

According to the surface treatment study, the group to which ZIRFACE was applied showed a surface roughness value 2 to 6 times higher than that of the control and acid.





Korea Head office

37-26, Dasa-ro 71-gil, Dasa-eup, Dalseong-gun, Daegu, Korea
info@dmx.biz
82-53-592-3146
www.hellodmx.com

Korea Gwangju office

#206, 249, Chuam-ro, Buk-gu, Gwangju, 61003, Korea
info@dmx.biz
82-62-602-0844
www.hellodmx.com

America office

14747 Artesia Blvd., Suite 5A La Mirada, California 90638
info@dmxamerica.com
714-752-6073
www.dmxamerica.com

Vietnam office

67 Yen The, Ward 2, Tan Binh District, HCMC, Vietnam
info@hellodmxasia.com
84-902-915-830
www.hellodmxasia.com