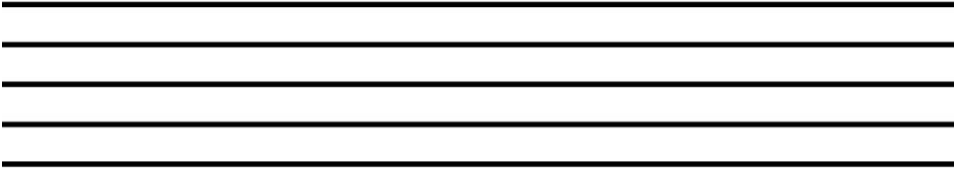




**Activity Three: Practice drawing staff lines. Use this paper, a ruler and a pencil to draw 3 sets of staff lines. There are 5 lines, separated by four spaces. They look like this:**

## The Staff



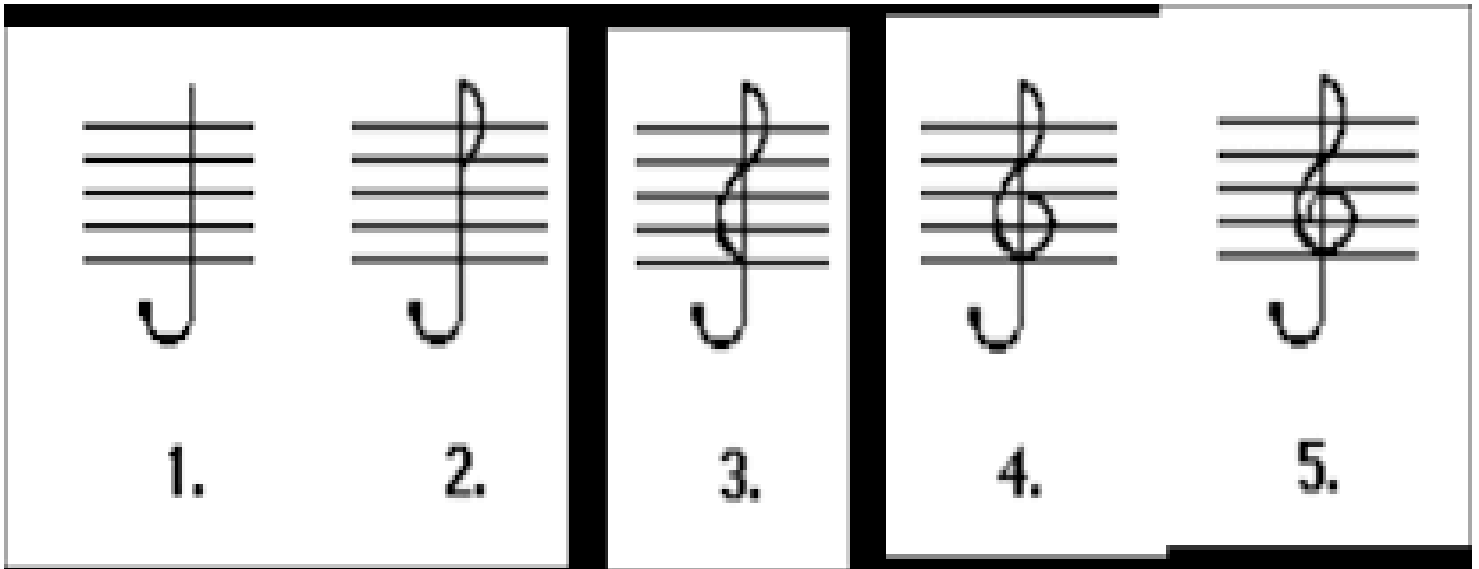
**Now draw your own sets of 5 lines and four spaces:**

**1.**

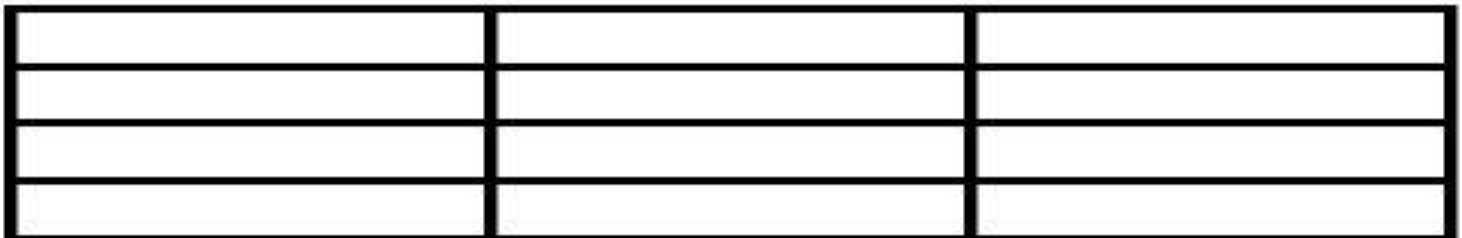
**2.**

**3.**

**Activity Four: Practice drawing treble clefs. Treble clefs are used to represent high notes. Begin by tracing these parts of the treble clef:**



**Activity Five: Practice drawing 6 of your own treble clefs on the “staff lines” below.**



Activity Six (optional): Color the treble clef

Name: \_\_\_\_\_

# The Treble Clef

