

Student Name _____

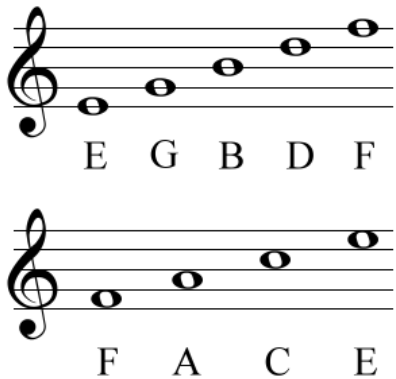
St. Anthony 2nd and 3rd Grade Music Lesson Plans
April 6-10, 2020



Objective: Students will be able to define the term “Bass Clef” and “Grand Staff”. Students will review the meaning of the word “Staff” and “Treble Clef”. Students will be able to draw Staff lines and Bass Clefs (symbol for low notes) as well as drawing the “Grand Staff”.

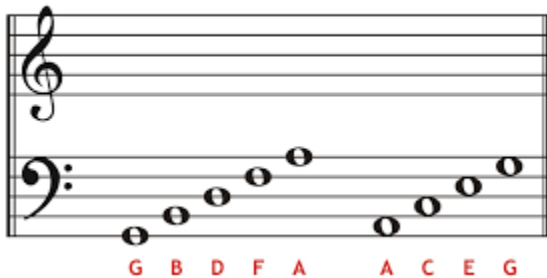
Activity One: Read the following article. It will help you review what you learned about the “staff” and the “treble clef”. It will also help you to learn about and define the terms “bass clef” and “grand staff”.

Article: The word “staff” is like a map that helps people tell where the high and low notes are. The staff has five lines and four spaces for the treble clef (symbol for high notes) and five lines and four spaces for the bass clef (symbol for low notes).



The **Treble Clef** is the top set of lines on the staff in a piece of sheet music. It shows you the notes to play on the piano with your right hand or sing with your high voice. The lines and spaces of the treble clef have letter names. The spaces are labeled FACE starting with the first space at the bottom. The lines are labeled EGBDF starting at the bottom line and going to the top line.

Bass Clef Notes



The **Bass Clef** is the bottom set of lines on the staff in a piece of music, as shown to the left. It shows you the notes to play with your left hand on the piano or sing with your low voice. The lines and spaces of the bass clef have letter names. The spaces are labeled ACEG, starting with the first space at the bottom. The lines are labeled GBDF starting at the bottom line and going to the top line.

GRAND STAFF



The picture to the left shows the **Grand Staff**. It is used for piano music and choral (singing) music, as well as for other pieces of music where there are both high and low notes. Do you see that the treble clef and bass clef have their own sets of five lines and four spaces? Do you see the bracket that connects them, followed by a line? That means that the high and low notes will be practiced or performed together. For example, low voices will be singing with high voices and both the right and left hands will be playing the music within the same time frame. Don't worry! You will get it!

Activity Two: Watch the following You Tube clips.

<https://www.youtube.com/watch?v=vEDHpBoRxsw>

<https://www.youtube.com/watch?v=oEZEoZpc8b4>

Activity Three: Practice drawing bass clefs. Bass clefs are used to represent low notes. Begin by tracing these parts of the bass clef:

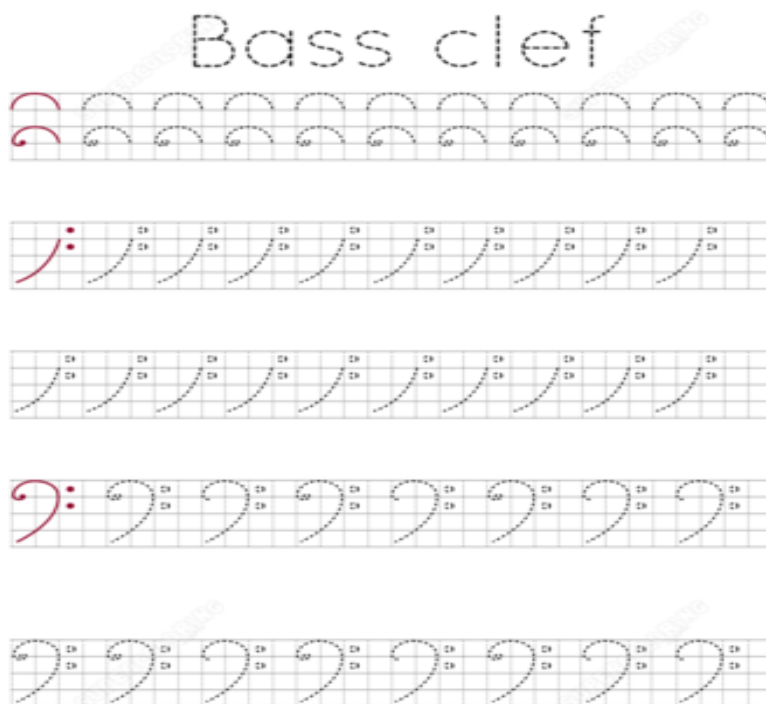


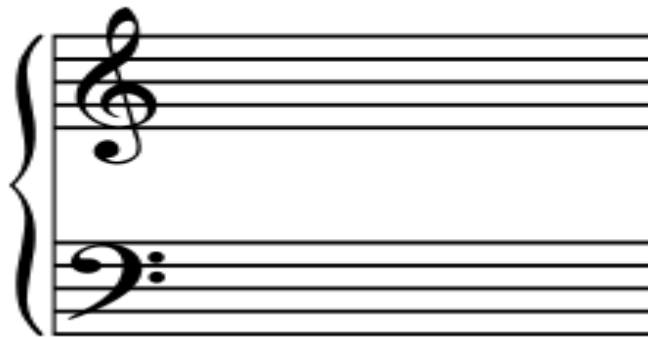
Image printed on www.supersoftworksheets.com - for personal use only - reproduction is prohibited

Activity Four: Practice drawing 6 of your own bass clefs on the staff lines below.



Activity Five: Practice drawing Grand Staff lines and spaces. Use this paper, a ruler and a pencil to draw 3 sets of Grand Staff lines, spaces and symbols. Be sure to put a bracket and a line on the left side of both staves (Stave is plural for staff). Remember, there are 5 lines, separated by four spaces. They look like this:

GRAND STAFF



1.

2.

3.

Activity Six (optional): Color the Bass Clef.

