

Student Name \_\_\_\_\_

**St. Anthony 4th Grade Music Lesson Plans  
March 30-April 4th, 2020**



---

**Objective:** Students will be able to define the words, “staff” and “treble clef”.

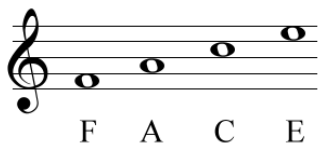
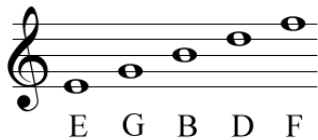
Students will also be able to draw staff lines and treble clefs (symbol for high notes)

---

**Activity One:** Read the following article about staff lines and the treble clef.

**Article:** Music is written down using notes on a **staff**. Notes are symbols used for musical sound. A **staff** is a set of five lines and four spaces on which notes are written to indicate their pitch. As you will remember, pitch indicates sounds that are “high”, “medium” or “low”.

The **Treble Clef** is the top set of lines on the staff in a piece of sheet music. It shows you the notes to play with your right hand or sing with your high voice. The lines and spaces have letter names. The spaces are labeled FACE starting with the first space at the bottom. The lines are labeled EGBDF (Every Good Boy Does Fine) starting at the bottom line and going to the top line. We will learn more about reading the notes of the treble clef next week.



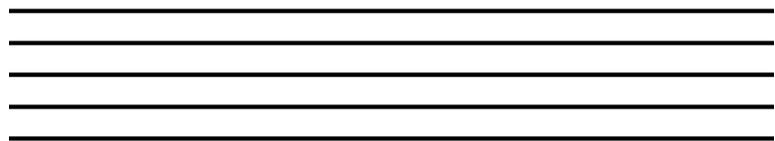
Activity Two: Watch the following You Tube clips.

<https://www.youtube.com/watch?v=UzSnns14suE>

<https://www.youtube.com/watch?v=1OEzMITSWdo>

Activity Three: Practice drawing staff lines. Use this paper, a ruler and a pencil to draw 3 sets of staff lines. There are 5 lines, separated by four spaces. They look like this:

## The Staff



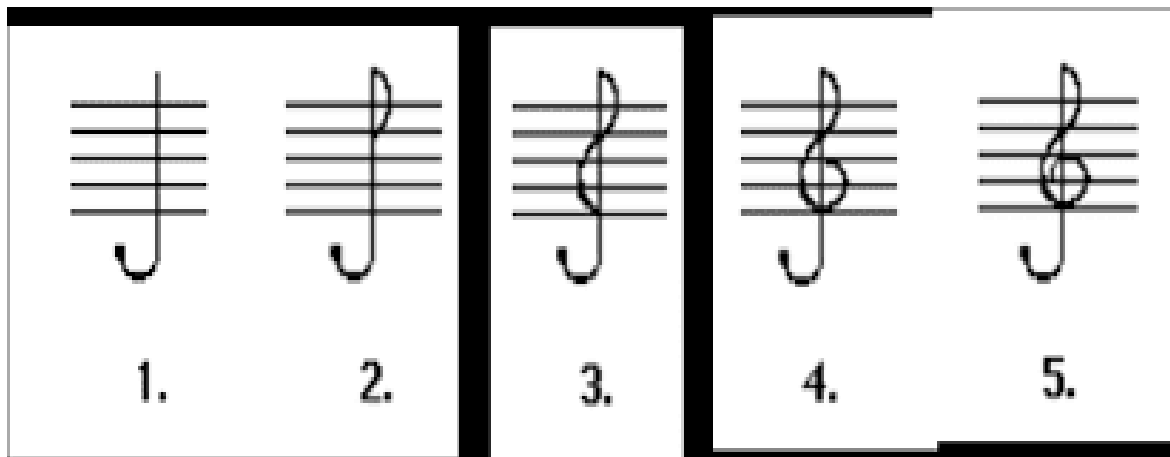
Now draw your own sets of 5 lines and four spaces:

1.

2.

3.

**Activity Four: Practice drawing treble clefs. Treble clefs are used to represent high notes. Begin by tracing these parts of the treble clef:**



**Activity Five: Practice drawing 6 of your own treble clefs on the “staff lines” below.**



**Activity Six (optional): Color the treble clef**

Name: \_\_\_\_\_

# The Treble Clef

