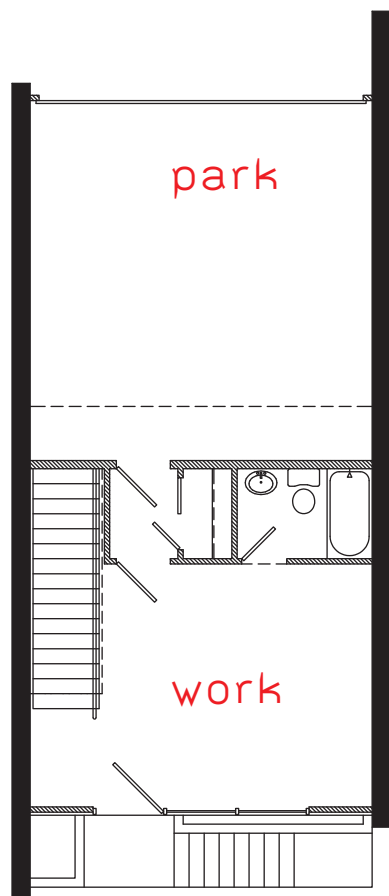


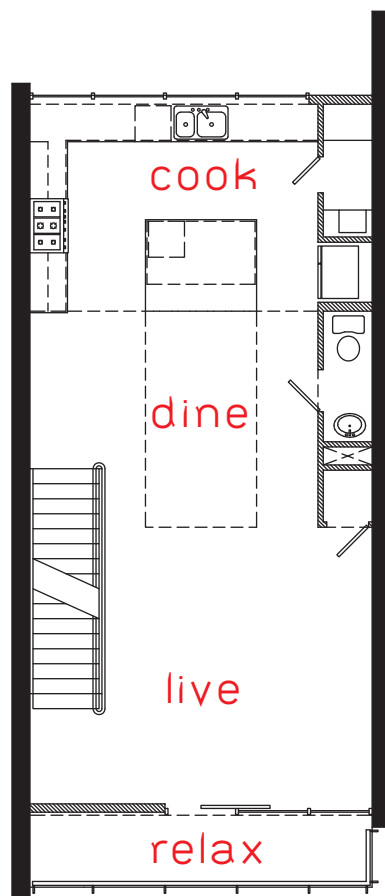


## unit 2

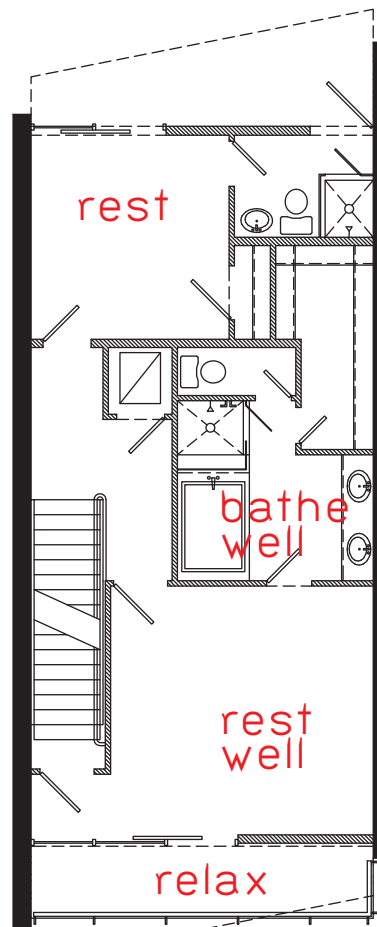
1901 ft<sup>2</sup> conditioned  
957 ft<sup>2</sup> exterior living  
408 ft<sup>2</sup> garage



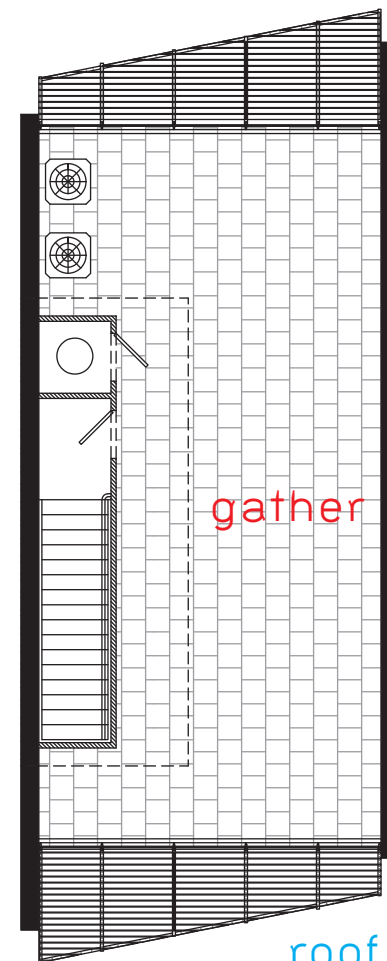
**first**  
397 ft<sup>2</sup> conditioned  
408 ft<sup>2</sup> garage



**second**  
752 ft<sup>2</sup> conditioned  
76 ft<sup>2</sup> balcony



**third**  
752 ft<sup>2</sup> conditioned  
76 ft<sup>2</sup> balcony



**roof**  
805 ft<sup>2</sup> deck

though the plans shown above are generally characteristic in scale and scheme of the final product, these plans are not necessarily representative of actual as-built conditions. the developer reserves the right to change any aspect of the plans without notice. THE SOUTH 5TH is designed and will be built to qualify for LEED certification. the 'LEED for Homes Logo' is a registered trademark owned by the U.S. Green Building Council and is used by permission. the logo signifies only that THE SOUTH 5TH is actively participating in the USGBC LEED for Homes Program.