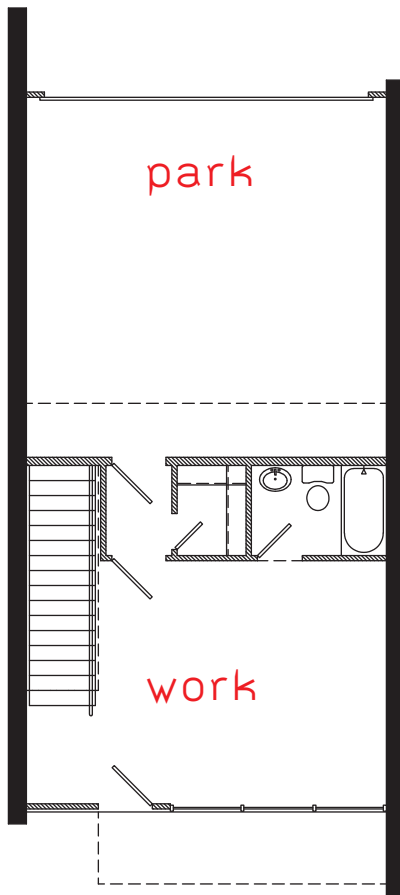


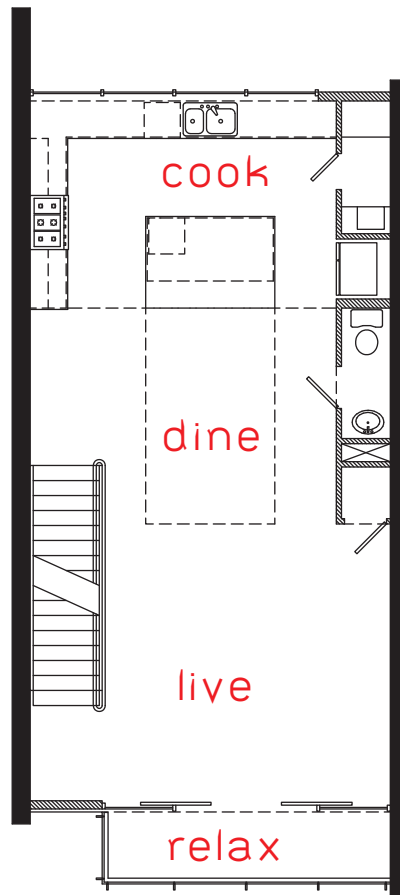


# unit 11

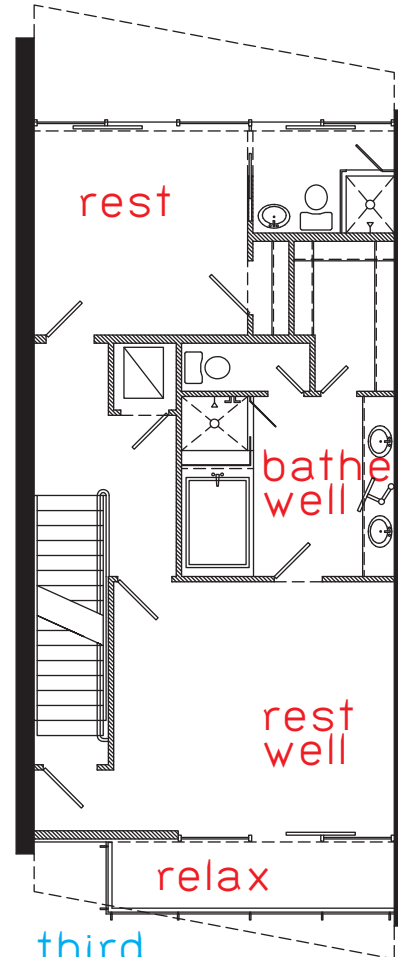
2004 ft<sup>2</sup> conditioned  
972 ft<sup>2</sup> exterior living  
428 ft<sup>2</sup> garage



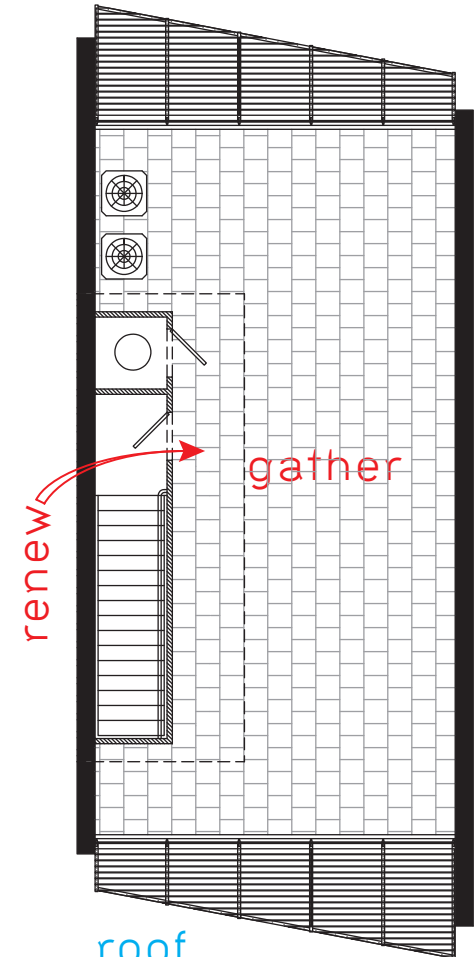
first  
416 ft<sup>2</sup> conditioned  
428 ft<sup>2</sup> garage



second  
794 ft<sup>2</sup> conditioned  
64 ft<sup>2</sup> balcony



third  
794 ft<sup>2</sup> conditioned  
64 ft<sup>2</sup> balcony



roof  
844 ft<sup>2</sup> deck

though the plans shown above are generally characteristic in scale and scheme of the final product, these plans are not necessarily representative of actual as-built conditions. the developer reserves the right to change any aspect of the plans without notice. THE SOUTHS 5TH is designed and will be built to qualify for LEED certification. the 'LEED for Homes Logo' is a registered trademark owned by the U.S. Green Building Council and is used by permission. the logo signifies only that THE SOUTHS 5TH is actively participating in the USGBC LEED for Homes Program.