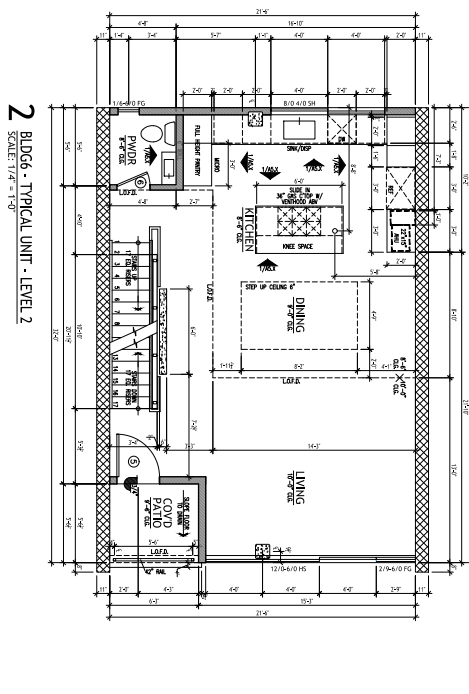
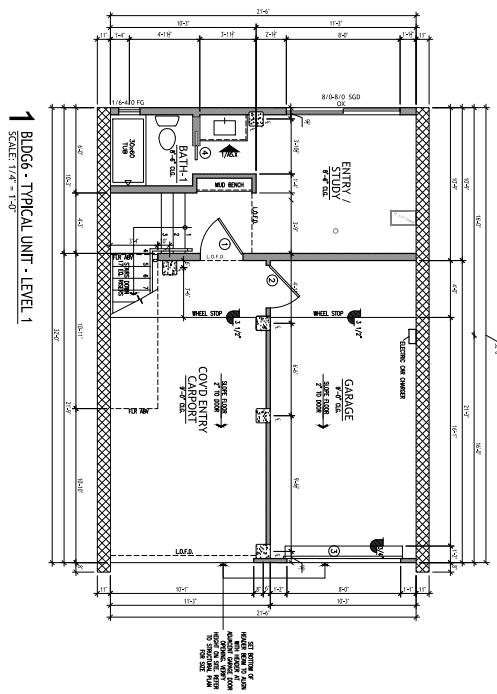
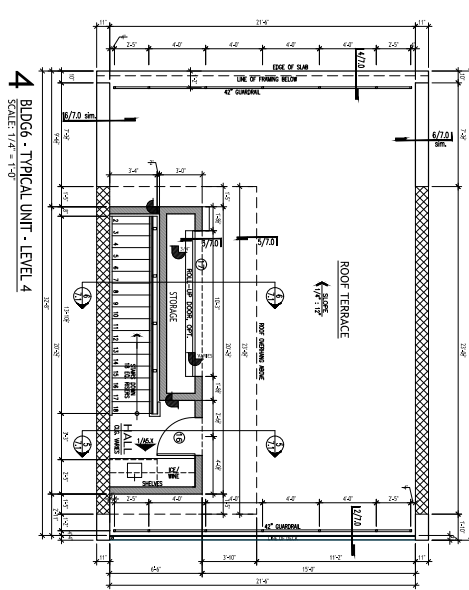
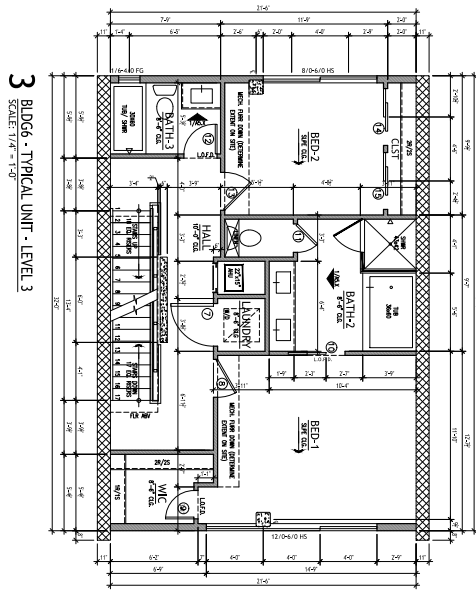


Though the plans show above are generally characteristic in scale and scheme of the final product, these plans are not necessarily representative of actual as- built conditions. The developer reserves the right to change any aspect of the plans without notice. The South 5th is designed and projected to qualify for Austin Energy's 5-Star Green Rating. Square footage source per developer. All information deemed reliable. Buyer must verify.



KEY PLAN
BLDG 6



