

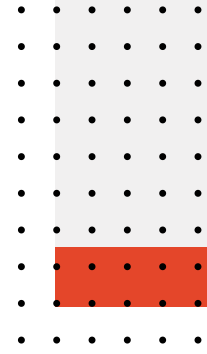
CENTRAL VICCIVIL

JUDGE US ON OUR ABILITY



CAPABILITY STATEMENT

TABLE OF CONTENTS



Pg

02. Abilities

03. Company Overview

04. Capabilities

08. What We Do

09. Operations

11. Certifications

12. Integrated Management System

13. Recent Projects

16. Organisation Chart

17. Community Involvement

18. Referees

19. Contact Information

JUDGE US ON OUR ABILITY



Capability

We have the team and the equipment to get the job done



Serviceability

We ensure we give our clients less to think about by our positive interactions with traditional owners and other stakeholders



Adaptability

We understand that plans can change, and we have the skill and knowledge base to adapt to whatever a project can throw at us



Reliability

All our plant is serviced to manufacturer recommendations to ensure it works when we need it to



Dependability

In over 30 years of operations, we have never failed to finish a project to our clients satisfaction

COMPANY OVERVIEW

About Us



Central Vic Civil Pty Ltd (CVC), is a locally based civil construction company with a diverse range of project experience. We comfortably deliver Road construction, Bulk earthworks, Sewer and Water Pump Stations, Property Sub-divisions and Drainage projects up to \$30,000,000 in value.

Our dedicated and long serving workforce boasts 30 years of experience building local infrastructure projects. Central Vic Civil Pty Ltd has the capability, capacity, experience and knowledge to deliver small to large scale civil construction projects to the highest standards of quality and safety, to budget and program. Our highly skilled and versatile workforce can deliver in the required timeframe and has recently successfully delivered 6 large road projects in the last 24 months in addition to our sub-divisions, pumpstation projects (Rivulet and Cherry Flat Road SPS Projects) and other drainage and sewer projects.

Our most recently completed projects include the BWEZ Soho Road extension for a local developer, Dowling Road (rural road reconstruction), Tait Street reconstruction, Langstaff Drive reconstruction stages 1 and 2 and the Leith Street reconstruction projects for the City of Ballarat.

Our Workforce is a skilled and dedicated team consisting of 5 construction crews, many of our workers being long term and experienced employees providing our greatest strength in a reliable and versatile team that has, and continues to delivered a wide range of significant projects. We meet the highest levels of safety and quality through the delivery of or work and pride ourselves on achieving high standards whilst still meeting expectations in terms of timeframes and cost control.

We take pride in offering a wide range of key products and services. Our commitment is to aim to set the standard for quality, innovation, and customer satisfaction and has established us as a long term trusted and reputable name in the industry.

CAPABILITIES



OUR CAPABILITY AND MANAGEMENT SYSTEMS

We are highly capable and diligent in the delivery all of our projects, we have third party certification and comprehensive systems, policy and procedures to support our experience, resources and capacity to undertake and complete complex construction projects to the highest standards of quality, safety, cost and timing ensuring the best outcome for our clients.

Our capability is assured with our Management Systems and Management team supporting our delivery teams with our Integrated Management System, Policies and Procedures to ensure we meet the highest standards of Safety, Quality and Environment Management through the delivery of our projects. Our IMS includes - : IMS manual 2024, Safety Management Plan, Environmental management Plan, Emergency Management Plan, Supervisors Pre start meeting record (completed daily), Safety inductions, Plant risk assessments, Saft Work Method Statements, Subcontract evaluation pack completed by every subcontractor before starting on site, ITP Register, Risk Register, Hazardous substance register, Take 5-3 Process, Tool box meetings, ISO 9001: 2015 Quality Management Systems certification, ISO 45001 2018 WHS Management Systems certification, ISO14001:2016 Environmental Management Systems certification, Public and Products Liability Insurance and Workcover Insurance

OUR EXPERTISE

We specialize in a broad range of civil construction activities including road & bridge construction, subdivision development, large sewer & water Infrastructure projects including sewer pumpstations and rising mains. The majority of our projects are through both state and government authorities and as well as private land developers. Our expertise in trenching, pipe laying, and associated tasking ensures the seamless integration of these vital utilities, providing efficient and reliable infrastructure for civil, residential, commercial, and industrial projects.

QUALITY ASSURANCE

Central Vic Civil is Global Mark Certified in ISO9001 / ISO14001 / IOS45001. We pride ourselves on the quality of our work and of our staff that deliver our projects. We have experienced project managers, engineers and supervisors and core operators to make sure that every project we do is delivered on time at the highest quality level.

We also implement the following policies to support our IMS:

- Health and safety and stop work policy, Environmental policy, Quality policy, Social procurement policy, Indigenous procurement policy and Indigenous relations policy.

WE SUPPORT LOCAL

it is our business model to employ local staff on projects, providing benefit to the local economy. Our model of local utilization has worked successfully for many years with many staff continuing long term employment.

SAFETY

All our staff are trained in all aspects of OH&S and put safety at the forefront of our culture and daily operations. We boast a full time dedicated OH&S Manager on staff and the team have been delivering projects to the highest degree of safety and quality for almost 30 years. Our base methodology is designed and driven to achieve the highest levels of safety, efficiency and quality as well as minimizing the impact to local businesses, local traffic and the General Public. Our methodology can be expanded upon in more detail upon request or if invited for an interview.

FLEET

We have a modern fleet of plant consisting of over 100 item of large plant including 15 excavators ranging from 50 tonne excavators down to 1.5 tonne. 25T dumpers, graders, rollers, tracked and wheeled loaders, soil screens, Telle handlers sewer testing trailers as and a complete range of small plant in support. All excavators are equipped with a full range of buckets and a breaker, all excavators above 20 tonne are also equipped with GPS. CVC also maintains its own truck fleet including multiple truck and trailers and a range of floats to support ground crews in acquiring raw products and material and plant movement as, and when required to assist in smooth and efficient processes and avoid delays.

SUPPLIERS

We have establish long term and loyal connections with our suppliers and subcontractors ensuring the shortest lead times for material and reliable service from loyal subcontractors ensuring we can commence and work through projects quickly and efficiently . Our ongoing commitment to ensuring our projects are completed with the help of local suppliers and subbies provides us with reliable supply chains, shorter lead times and priority services from our broad and extensive list of suppliers also supporting out local communities.



PROJECT MANAGEMENT

Our comprehensive project management services ensure seamless execution from start to finish. Our experienced project managers oversee all aspects of your construction projects, ensuring adherence to timelines and budgets, and maintaining effective communication among all stakeholders. With our commitment to transparency and collaboration, we ensure that your projects are delivered seamlessly, meeting the highest standards of quality and client satisfaction.

CLIENT EXPERIENCE

Client-focused solutions are at the core of our philosophy. We work closely with client representatives, and architects to understand your project requirements and deliver customized solutions that meet your unique needs. By prioritizing safety, efficiency, and sustainability, we consistently deliver exceptional results that stand the test of time.

SOCIAL PROCUREMENT FRAMEWORK, WORKPLACE DIVERSITY, AND INCLUSION

CVC prides itself on our culture of supporting our local community. We achieve this by investing as locally as possible, supporting diversity and equality.

Value for money – Our aim is to be industry leaders. We set standards for all elements of our work high and have a supportive and solid culture. We deliver our projects to the highest levels of safety, quality, cost and timing providing our clients with the best outcomes in terms of value for money.

LOW RISK

CVC has extensive experience that has driven us to achieve the highest standards in every regard, safety being paramount. The same principles are applied to all elements of our work, driving down the risk of potential issues in environmental management, quality, cost as well as delivery timing. To this end we automatically provide a lower risk option to our clients given the work we do to mitigate all types of risk that can impact a desired outcome.

CVC has the capability to deliver property and infrastructure projects setting the standard for pace, quality and safety. We have recently completed delivery of a 9 stage Subdivision including a turning lane, wetlands, pump station and sewer rising main in 20 months. This is one stage of approximately 30 blocks and supporting infrastructure delivered every 2 months consistently through challenging weather conditions. We have been able to deliver residential infrastructure quicker than any local contractors earning a reputation with suppliers and subcontractors as the market leaders and being good to work for and with.

In conclusion, we are a leading civil construction company offering a diverse range of products and services. With our expertise in pipe installation, comprehensive construction services, pipeline rehabilitation capabilities, and project management excellence, we are your reliable and innovative partner in the industry.





WHAT WE DO



CIVIL AND ROADWORKS

We boast over 100 items of large plant and experienced road builders managing our road crews. Our experience includes subdivision construction as well as local government road reconstruction projects.



PIPELINES

We have the proven capability to construct both small and large diameter pipelines using all types of pipe materials for drainage, sewer and watermain applications. We are accredited to undertake works on Central Highlands Water (CHW) water authority assets. We have also delivered many sewer pump station projects.



BULK EARTHMOVING

Our impressive fleet of plant includes up to 49T diggers and rock breakers. We have the capability of constructing all types of earthworks projects. We have experience in land development sites, storage dam construction and water treatment lagoons. We have a strong focus on quality to ensure that all our work is completed to the highest quality and in line with the required standards.



WATER TREATMENT

At Central Vic Civil, we have a wealth of experience in a diverse range of sewer water infrastructure projects. This includes sewer and water pump stations, emergency storage cells, sewerage treatment plants, water treatment plants, stormwater harvesting projects and sewerage treatment lagoons. Many of these projects requiring the management of specialist subcontractors for, mechanical fit out, structural concrete, structural steelwork, building works, electrical, telemetry and chlorine dosing.



LAND DEVELOPMENT

CVC takes pride in extensive experience in all types of land development projects. With residential subdivisions, industrial subdivisions, unit development sites and retirement villages. We have in house capabilities to construct all civil works required for these types of developments. We are accredited to undertake works on water authority assets and are VEDN accredited to undertake associated civil works for the installation of electrical services. CVC have developed strong relationships with land development consultants, councils, water authorities and service authorities to ensure that compliance is achieved in a timely manner.

CVC has the capability to deliver property and infrastructure projects setting the standard for pace, quality and safety. We have recently completed delivery of a 9 stage Subdivision including a turning lane, wetlands, pump station and sewer rising main in 20 months. This is one stage of approximately 30 blocks and supporting infrastructure delivered every 2 months consistently through challenging weather conditions. We have been able to deliver residential infrastructure quicker than any local contractors earning a reputation with suppliers and subcontractors as the market leaders and being good to work for and with.

OUR OPERATIONS

CVC is recognised as an industry leader in undertaking large scale sewer and water infrastructure projects. In recent years have diversified into handling and managing all types of Civil Construction projects.

We have a modern fleet of plant consisting of over 100 items of large plant including 15 excavators ranging from 50 tonne excavators down to 1.5 tonne. 25T dumpers, graders, rollers, tracked and wheeled loaders, soil screens, Telle handler's sewer testing trailers as well as a complete range of small plant in support. All excavators are equipped with a full range of buckets and a breaker, all excavators above 20 tonnes are also equipped with GPS. CVC also maintains its own truck fleet including multiple truck and trailers and a range of floats to support ground crews in acquiring raw products and material and plant movement as, and when required to assist in smooth and efficient processes and avoid delays.

We have established long term and loyal connections with our suppliers and subcontractors. Our ongoing commitment to ensuring our projects are completed with the help of local suppliers and subbies provides us with reliable supply chains, shorter lead times and priority services from our broad and extensive list of suppliers.

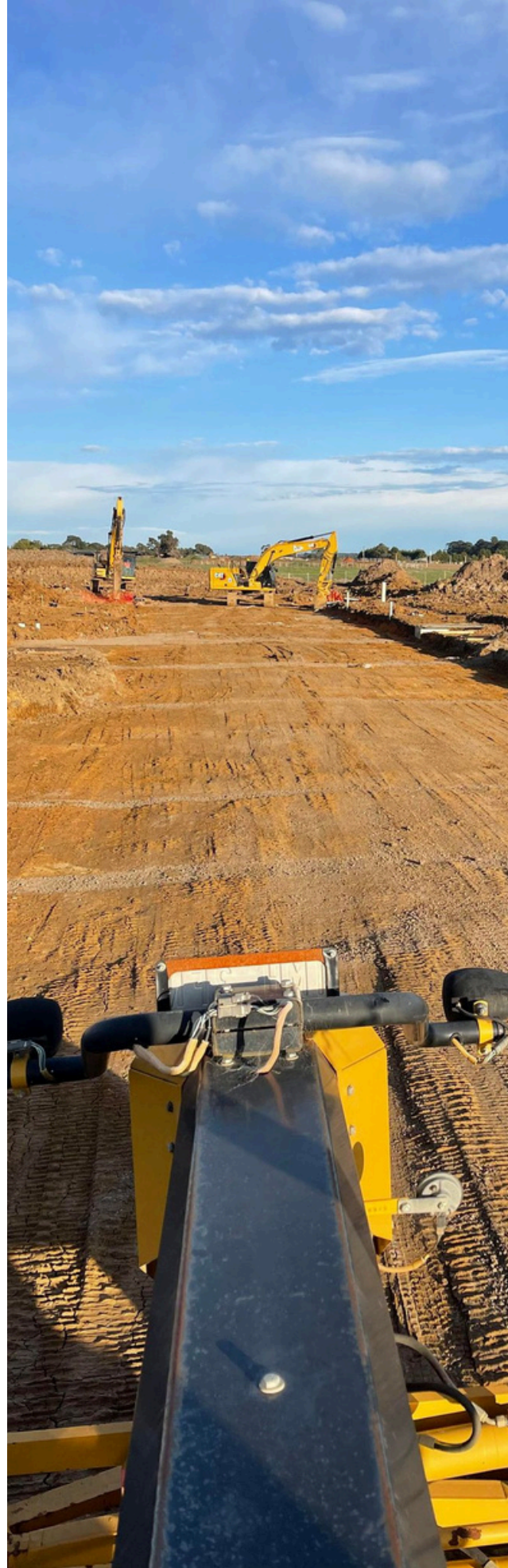
CVC has the capability to deliver property and infrastructure projects setting the standard for pace, quality and safety. We have just completed delivery of 9 stage subdivisions including a turning lane, wetlands, pump station and sewer rising main in 20 months. This is one stage of approximately 30 blocks and supporting infrastructure delivered every 2 months consistently through the wettest winter on record. We have been able to deliver residential infrastructure quicker than any local contractors earning a reputation with suppliers and subcontractors as the market leaders and being good to work for and with.



We can achieve this by having good and long standing relationships with suppliers and subcontractors and an experienced, committed and diverse team. CVC is a regionally based company located in Ballarat. The vast majority of our construction work takes place in Ballarat and Regional Victoria which allows us to have key relationships with local authorities, suppliers, subcontractors and community stakeholders. This will allow us to achieve the objectives of value for money, quality delivery and shorter timeframes for project delivery.

We are highly capable and diligent in the delivery all of our projects, we have the experience, resources and capability to undertake and complete this project to the highest standards of quality, safety, cost and timing ensuring the best outcome for Development Victoria, and the respective local government organizations in terms of value for money and working towards meeting the Victorian Governments policy objectives through the delivery of the projects. This includes generating social value by achieving social and sustainable business practices, providing and encouraging a diverse and inclusive workplace which is an integral part of the CVC culture and meeting the objectives of Local Jobs First Policy.

CVC is based in Ballarat and partnering with CVC ensures the highest levels of investment back into the immediate economy by supporting 40 local families directly employed and approximately another 100 Ballarat subcontractors and suppliers as well



OUR CERTIFICATIONS

CVC are proudly certified with the following Global Mark certifications:

- AS / NZS ISO 14001 – 2016: Environmental Management Systems
- AS / NZS ISO 45001-2018: Occupational Health and Safety Management Systems
- AS / NZS ISO 9001-2016: Quality Management Systems
- CCF Member

CVC's objective from a safety perspective is to achieve continual and significant continual improvement, setting the standard for safe work systems and practices. We are third party ISO certified and as at the end of March 2023, have just complete three independent safety audits to check and measure our HSEQ systems. We undertake independent HSEQ systems auditing in addition to our annual ISO certification in the aim to achieve our objectives of continual improvement. We have received favourable feedback from client side regarding the latest round of audits and pride ourselves on our strong safety cultural at all levels throughout the organization.



Global-Mark.com.au®



Global-Mark.com.au®



Global-Mark.com.au®



INTEGRATED MANAGEMENT SYSTEM OUTLINE

We are committed to managing all our operations to the highest standards possible. We rate safety as the highest priority closely followed by quality and environmental management. We recognize that all three of these components are closely inter linked and dependent upon each other. Therefore, we have integrated the three set of requirements.

The system is designed to comply with the requirements of:

- ISO 9001: 2015 Quality Management Systems - requirements
- ISO 45001 2018 WHS Management Systems
- ISO14001:2016 Environmental Management Systems - Requirements

We have developed a Policy Statement for quality, safety, and environmental issues to ensure that the specific aims and objectives for each are clearly identified and understood and implemented. We review and amend, if necessary, our policies and procedures in this regard on a yearly basis and as and when required . We have measurable goals for these fields which we use to determine our level of compliance and give focus for continual improvements. The system is fully integrated, No portion of the Integrated Management System documents may be copied without the formal approval of CVC Pty Ltd management.

All CVC Pty Ltd sites will be monitored for compliance with all state, federal and company legislation, Our policies and procedures include but are not limited to the following and are designed to comply with all relevant Australian Legislation, Australian Standards and codes of practice.

- CVC Pty Ltd Safety & Stop work Policy.
- CVC Pty Ltd Environmental Policy
- CVC Pty Ltd Quality Policy
- CVC Pty Ltd SWMS and Risk assessment process

A monthly HSEQ Audit will be conducted on applicable CVC Pty Ltd project sites and will be conducted by the HSE Coordinator or delegate.

Annual review of the IMS system and supporting document's including a full internal audit will be be conducted prior to the company's Annual review meeting and any required external auditing. The issues our NCR's identified results of the review and internal audit. This allows us to drive continuous improvement and prepares us for our external compliance and surveillance audits.

RECENT PROJECTS



PROJECTS DELIVERED 2023

- Sloane St Sub Division
- Rivulet Subdivision Stage 7
- Bungaree Football Oval upgrade
- Ercildoune Dam construction
- Menhenant's Dam construction
- Meigas Restaurant Drainage Repair work
- Clarendon College Carparking and kerb channel street scape project

PROJECTS 2024

- Industrial subdivision Ballarat
- Road Construction drainage and service construction
- Rowlands Road Reconstruction – Sebastopol
- Cherry Flat Road Sewer Pump Station and Rising Main - Ballarat
- Rivulet Estate Stages 8 and 9 – Ballarat
- Bulk earthworks and dam construction - Ballarat





Cherry Flat Pump Station Project



BWEZ Soho Road - Large culvert crossing



BWEZ Culvert crossing constructed by CVC



BWEZ Soho Road Heavy Duty Asphalt Pavement construction



BWEZ Soho Road Subdivision Construction by CVC



BWEZ Soho Road Subdivision Construction by CVC

ORGANISATION CHART



COMMUNITY INVOLVEMENT



Central Vic Civil are proud sponsors of many local, grass roots sporting clubs and communities. Our community support includes being long term supporters of both the Bungaree Football and Netball Club and the Bungaree Bowling Club.

Further to CVC's support of local clubs, we value and believe in the importance of supporting local businesses. Included in this support, is the use of local construction contractors on our projects. Where possible, we continue to use local contractors in our current and future jobs.

CVC are proud to support local and will prioritise employing local workers & businesses.



REFEREES

We provided the following referee contacts, all of which we have completed works with recently to deliver subdivisions and infrastructure projects. All listed can provide detailed feedback on how Central Vic Civil conduct their business in terms of delivering.

Please don't hesitate to contact us should you wish to speak to one of our referees.

- Wayne Pelchen (Director – Porter Pelchen Properties)
- Ash Wilkie (Business Unit Manager - Spiire)
- Peter Tadjell (Senior Principal Senior Engineer – Stantec)
- Kaushal Vyas (Electrical audit Team Lead – Central Power)
- Jordan Doherty (Senior Engineer, Civil Engineering – Spiire)
- Daryl Weybury (Coordinator Infrastructure Delivery – CoB)
- Ian Ruxton (Reece Australia)



Contact Information

Work phone number

03 5335 3399

Email

reception@centralviccivil.com.au

Address

8 Liberator Drive, Mitchell Park, VIC 3355

Website

www.centralviccivil.com.au

Instagram

central_vic_civil

Please scan the QR code below to add our contact information directly to your phone.



CAPABILITY STATEMENT



CENTRAL
VIC CIVIL

03 5335 3399
reception@centralviccivil.com.au
8 Liberator Drive, Mitchell Park, VIC 3355
www.centralviccivil.com.au