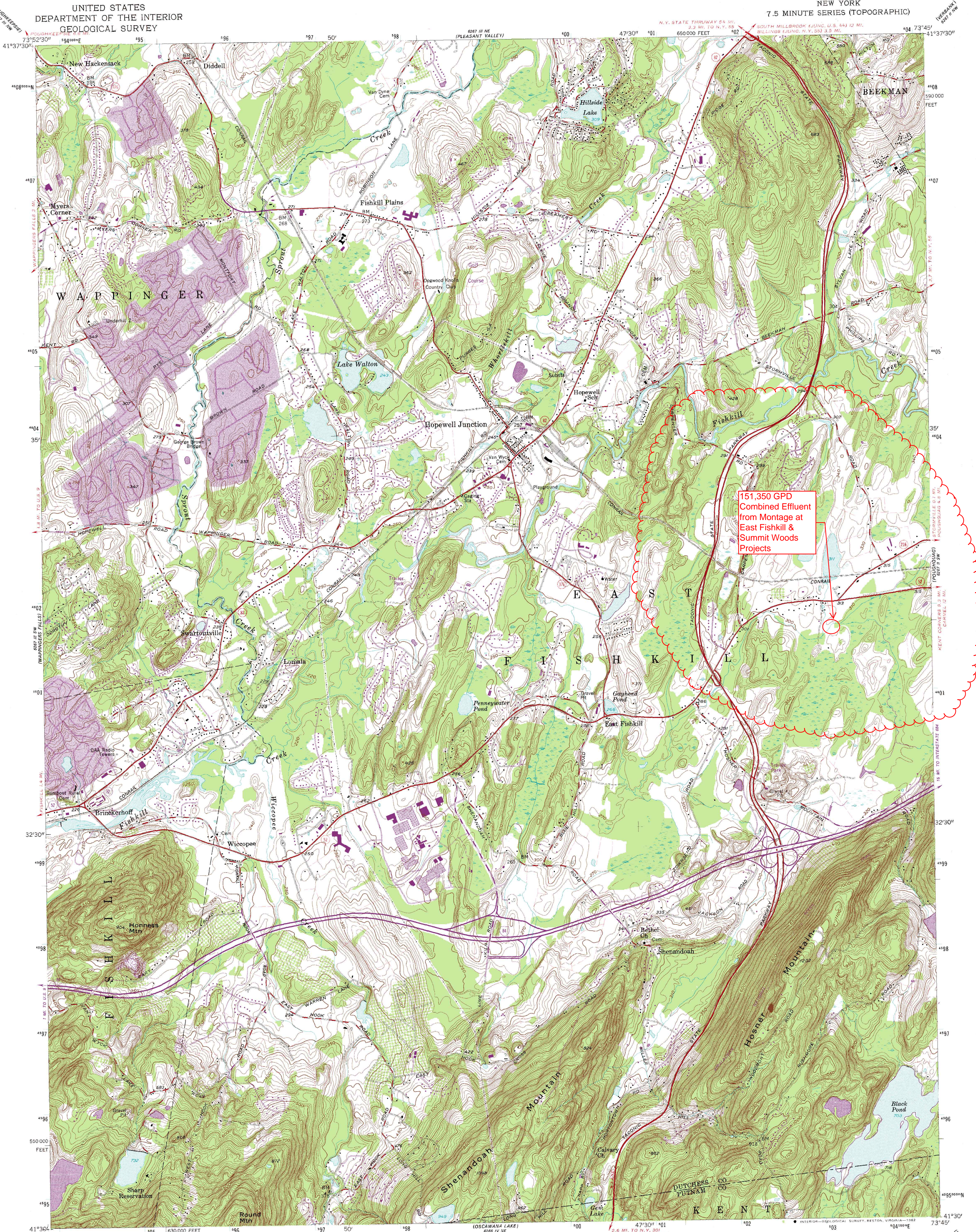


UNITED STATES
DEPARTMENT OF THE INTERIOR
GEOLOGICAL SURVEY

HOPEWELL JUNCTION QUADRANGLE
NEW YORK
7.5 MINUTE SERIES (TOPOGRAPHIC)



151,350 GPD
Combined Effluent
from Montage at
East Fishkill &
Summit Woods
Projects

Mapped, edited, and published by the Geological Survey

Control by USGS and NOS/NOAA

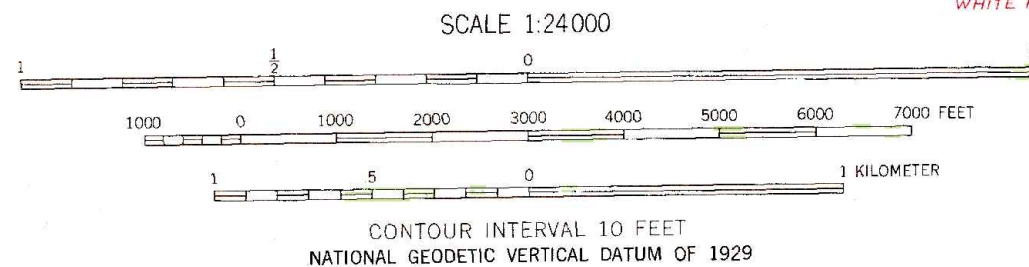
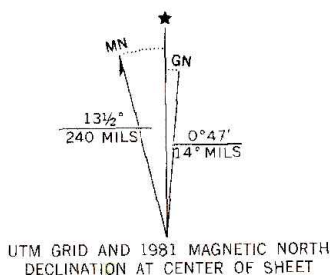
Topography by photogrammetric methods from aerial photographs taken 1955. Field checked 1957

Polyconic projection. 10,000-foot grid ticks based on New York coordinate system, east zone. 1000-meter Universal Transverse Mercator grid ticks, zone 18, shown in blue. 1927 North American Datum. To place on the predicted North American Datum 1983 move the projection lines 6 meters south and 35 meters west as shown by dashed corner ticks

Fine red dashed lines indicate selected fence and field lines where generally visible on aerial photographs. This information is unchecked

Revisions shown in purple and woodland compiled from aerial photographs taken 1980 and other sources. This information not field checked. Map edited 1981

Purple tint indicates extension of urban areas



THIS MAP COMPLIES WITH NATIONAL MAP ACCURACY STANDARDS
FOR SALE BY U.S. GEOLOGICAL SURVEY
DENVER, COLORADO 80225, OR RESTON, VIRGINIA 22092
A FOLDER DESCRIBING TOPOGRAPHIC MAPS AND SYMBOLS IS AVAILABLE ON REQUEST

ROAD CLASSIFICATION	
Primary highway, hard surface	Light-duty road, hard or improved surface
Secondary highway, hard surface	Unimproved road
Interstate Route	U.S. Route
	State Route

HOPEWELL JUNCTION, N. Y.

N 4130—W 7345/7.5

1957

PHOTOREVISED 1981
DMA 6267 III SE-SERIES V821