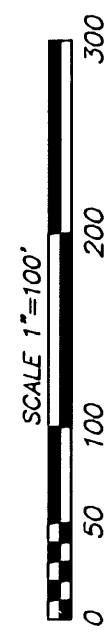
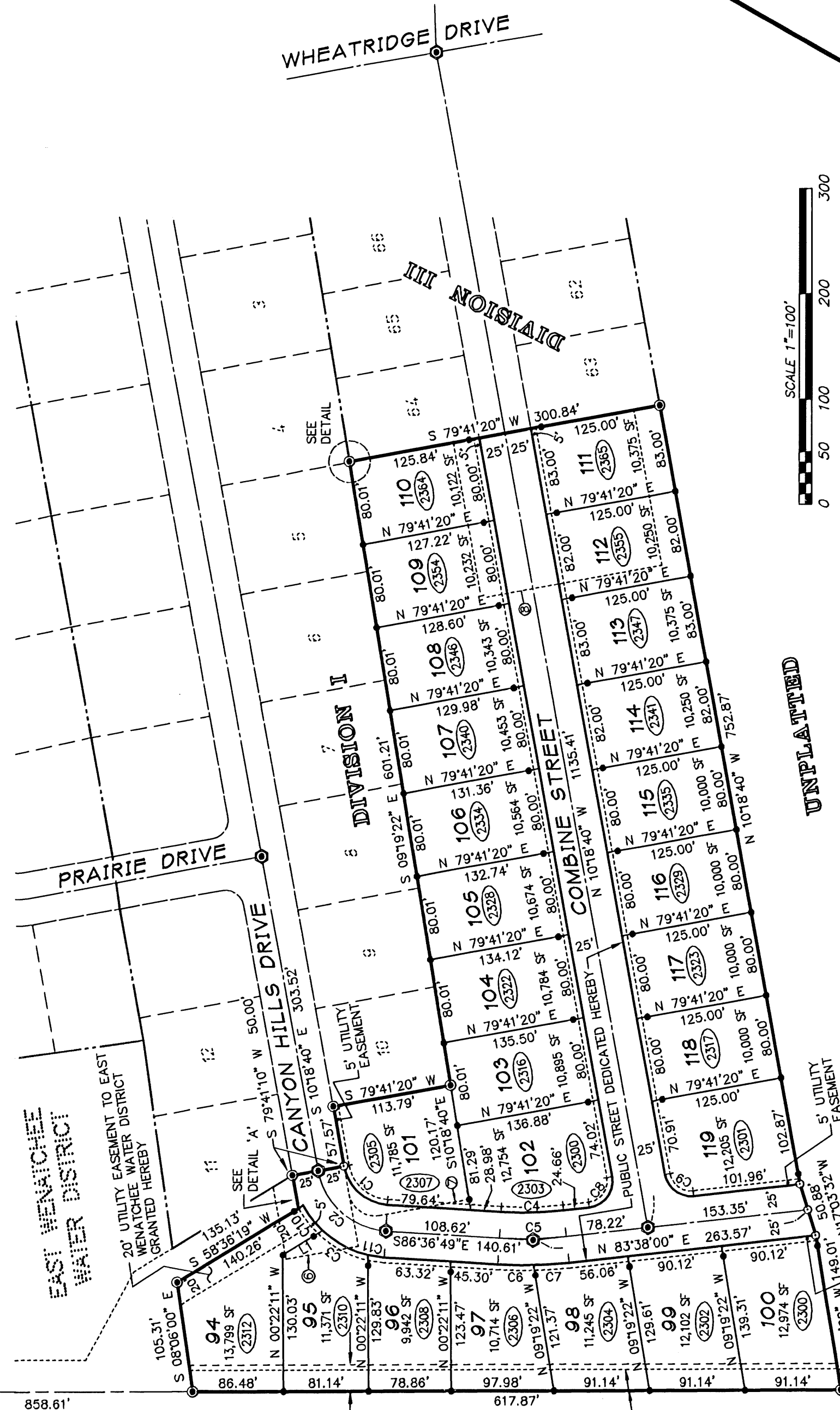
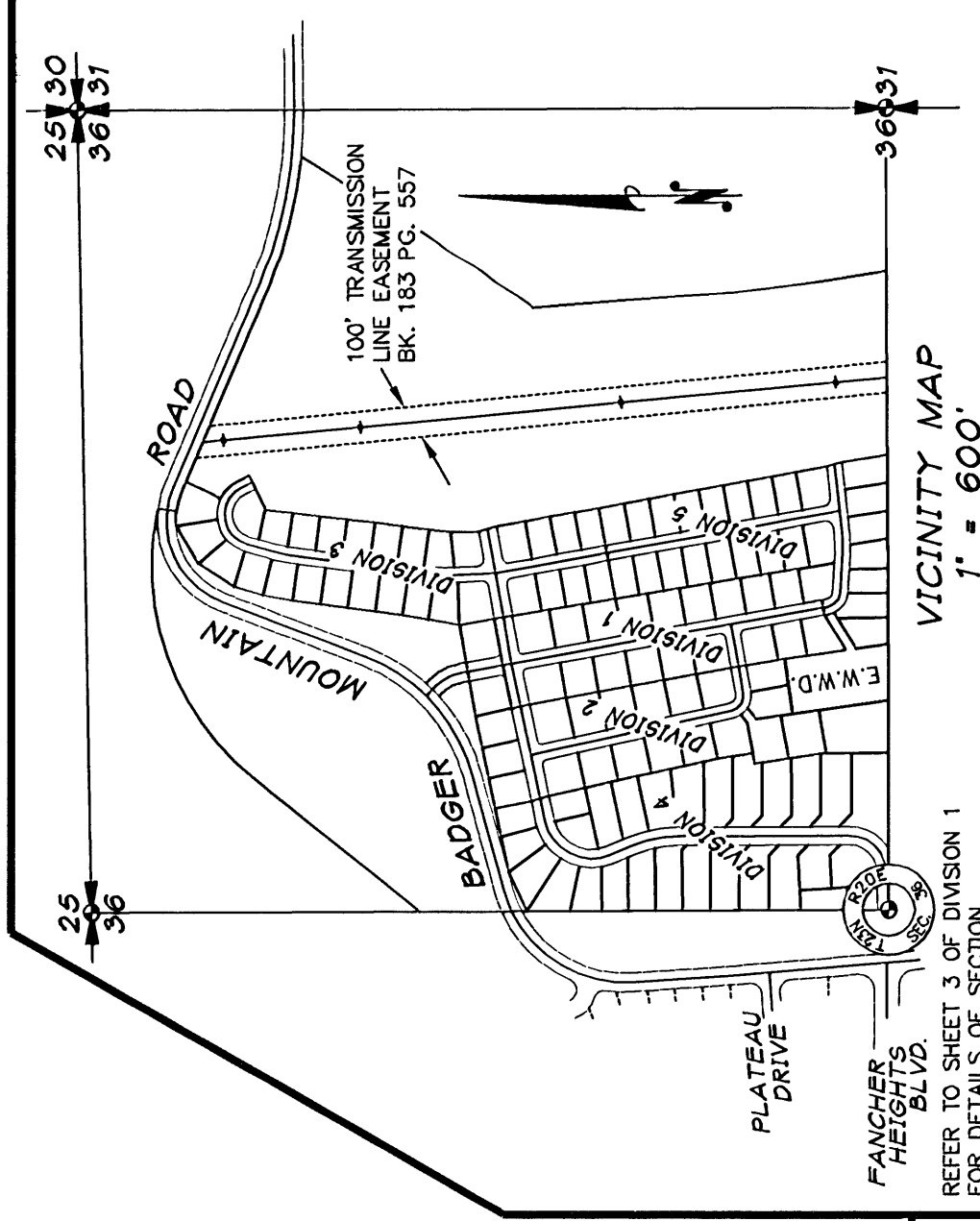
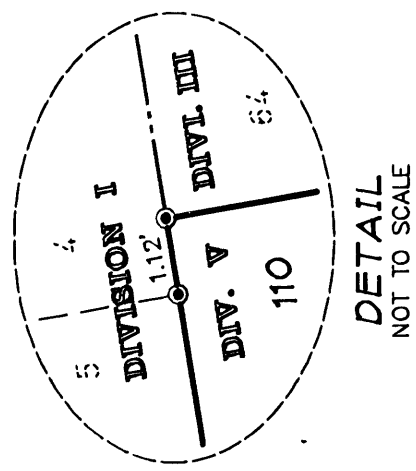


PLAT OF CANYON HILLS HILLS DIVISION 5

- GENERAL NOTES AND PROVISIONS**
- 1) LOT AREAS PER DIMENSIONS, AND INCLUDE EASEMENTS.
 - 2) THIS SUBDIVISION IS IN AN AREA THAT WILL BE SUBJECT TO A VARIETY OF ACTIVITIES ASSOCIATED WITH BEST MANAGEMENT PRACTICES OF AGRICULTURAL LANDS, SUCH AS SPRAYING, NOISE, ODORS, DUST, AND EARLY AND LATE HOURS OF OPERATION, ETC.. NONE OF WHICH SHALL BE SUBJECT TO LEGAL ACTION AS A PUBLIC NUISANCE WHEN PERFORMED IN ACCORDANCE WITH COUNTY, STATE, AND FEDERAL LAWS.
 - 3) AN APPROVED RESIDENTIAL SPRINKLER SYSTEM, MEETING NATIONAL FIRE PROTECTION AGENCY (NFPA) STANDARDS, SHALL BE INSTALLED IN ALL RESIDENTIAL STRUCTURES.
 - 4) THE DOUGLAS COUNTY P.U.D. NUMBER 1 TRANSMISSION LINE EASEMENT, AS SHOWN HEREON, CONTAINS RESTRICTIVE CONDITIONS AND ENCUMBRANCES. THIS EASEMENT IS RECORDED WITH DOUGLAS COUNTY AUDITOR IN VOLUME 183, PAGE 557.
 - 5) DOCUMENTATION FOR THE CANYON HILLS HOMEOWNERS ASSOCIATION AND COVENANTS, CONDITIONS AND RESTRICTIONS IS FILED UNDER DOUGLAS COUNTY AUDITOR'S FILE NO. 3014434.
 - 6) TEMPORARY TURNAROUND EASEMENT PER PLAT OF CANYON HILLS DIVISION 1 (AFN 3015120) TO TERMINATE HEREBY.
 - 7) TEMPORARY STORM DRAINAGE POND EASEMENT PER PLAT OF CANYON HILLS DIVISION 1 (AFN 3015120) TO TERMINATE HEREBY.
 - 8) TEMPORARY STORM DRAINAGE AND TURNAROUND EASEMENT PER PLAT OF CANYON HILLS DIVISION 3 (AFN 3033728) TO TERMINATE HEREBY.



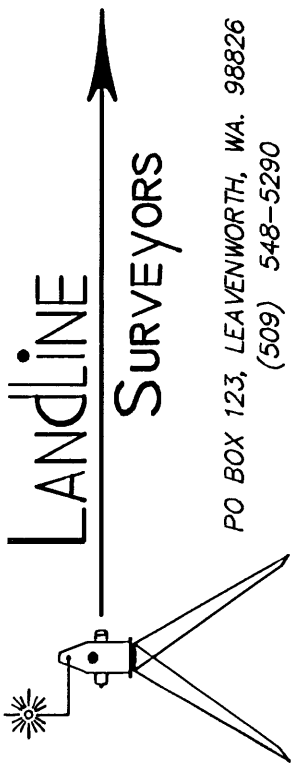
UNPLATTED

LINE TABLE		CURVE TABLE	
LINE	BEARING	CURVE	DELTA
L1	44.34°	C1	76°18'09"
L2	58°36'19" E	C2	76°18'09"
		C3	29°53'06"
		C4	9°45'11"
		C5	9°45'11"
		C6	4°51'26"
		C7	4°53'45"
		C8	93°56'40"
		C9	86°03'20"
		C10	18°17'32"
		C11	9°34'20"

METHOD OF MEASUREMENT
 FIELD TRAVERSE CONDUCTED WITH 5" THEODOLITE AND CALIBRATED E.D.M. COMPASS ADJUSTMENT. CORNERS FOUND 11/11/97.

BASIS OF BEARINGS
 SOUTH LINE NE 1/4 OF SECTION 36 PER PLAT OF CANYON HILLS DIVISION 1 RECORDED UNDER AFN 3015120

DATE: **10/24/04** FILE: 4039F5.DWG JOB NO: **4039**



DIVISION 5 CANYON HILLS
 PART OF SW 1/4 OF THE NE 1/4 AND PART OF SE 1/4 OF THE NE 1/4 SECTION 36, T. 23 N., R. 20, E.W.M. DOUGLAS COUNTY, WASHINGTON

AFN **3030354**

- LEGEND**
- = FOUND AS NOTED
 - ⊕ = SET OR TO BE SET 5/8" X 2' REBAR W/CAP L.S. #24228
 - ⊖ = SET 5/8" X 2' REBAR W/CAP L.S. #24228 ON LOT LINE 10.00' FROM LOT CORNER
 - ⊙ = NOTE: CORNERS MAY BE SET POST CONSTRUCTION
 - ⊗ = SET 5/8" X 2' REBAR W/CAP L.S. #24228 IN MONUMENT CASE
 - ⊕ = COMPUTED POSITION—NOT FOUND OR SET
 - ⊖ = ADDRESS ASSIGNED BY COUNTY
 - ⊗ = REFER TO NOTE NO. IN BULL

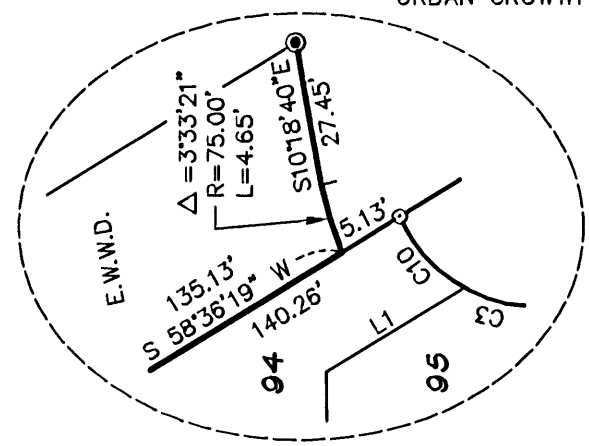


Signed and Sealed **10-25-04**
 Registration No. 24228

PO BOX 123, LEAVENWORTH, WA. 98826
 (509) 548-5290



FND 3 1/2" DOUGLAS CO. BRASS CAP IN 6" CONC. CYL.



DETAIL A NOT TO SCALE