

PLAT OF

# CANYON HILLS

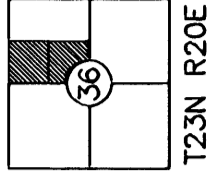
DIVISION 6

TRACT 'D'

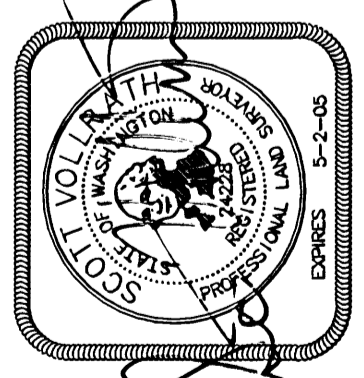
474 SQ. FT.

PART OF THE  
NORTHEAST QUARTER  
SECTION 36 T23N R20E W.M.  
DOUGLAS COUNTY, WASHINGTON  
P #5-96

INDEX MAP



SCALE 1" = 60'



3-14-05

### TRACT 'A'

A NON-BUILDING TRACT AVAILABLE FOR DRAINAGE AND UTILITIES TO BE OWNED AND MAINTAINED BY THE CANYON HILLS HOMEOWNERS ASSOCIATION, EXCEPT THAT PORTION WITHIN THE DOUGLAS COUNTY EASEMENT.

### TRACT 'B'

A NON-BUILDING OPEN SPACE TRACT AVAILABLE FOR DRAINAGE, LANDSCAPING AND UTILITIES TO BE OWNED AND MAINTAINED BY THE CANYON HILLS HOMEOWNERS ASSOCIATION.

### TRACT 'C'

A NON-BUILDING OPEN SPACE TRACT AVAILABLE FOR DRAINAGE, LANDSCAPING AND UTILITIES TO BE OWNED AND MAINTAINED BY THE CANYON HILLS HOMEOWNERS ASSOCIATION.

### TRACT 'D'

A NON-BUILDING SIGNAGE TRACT AVAILABLE FOR LANDSCAPING AND UTILITIES TO BE OWNED AND MAINTAINED BY THE CANYON HILLS HOMEOWNERS ASSOCIATION.

### BASIS OF BEARING

A MODIFIED WASHINGTON STATE GRID BASED ON HOLDING DOUGLAS COUNTY PUBLIC WORKS GRID COORDINATE AND ELEVATION ON THE CENTER QUARTER OF SECTION 36. THE PROJECT IS THEN RUN ON GROUND COORDINATES FROM THE CENTER QUARTER BASE POINT. THIS MAP IS ALSO ROTATED 16 SECONDS LEFT FROM THE ORIGINAL CANYON HILLS DIVISIONS 1-5.

### METHOD OF BALANCE

A CLOSED TRAVERSE WAS BALANCED BY COMPASS RULE OF ADJUSTMENT. CLOSURE EXCEEDED 1 IN 10000.

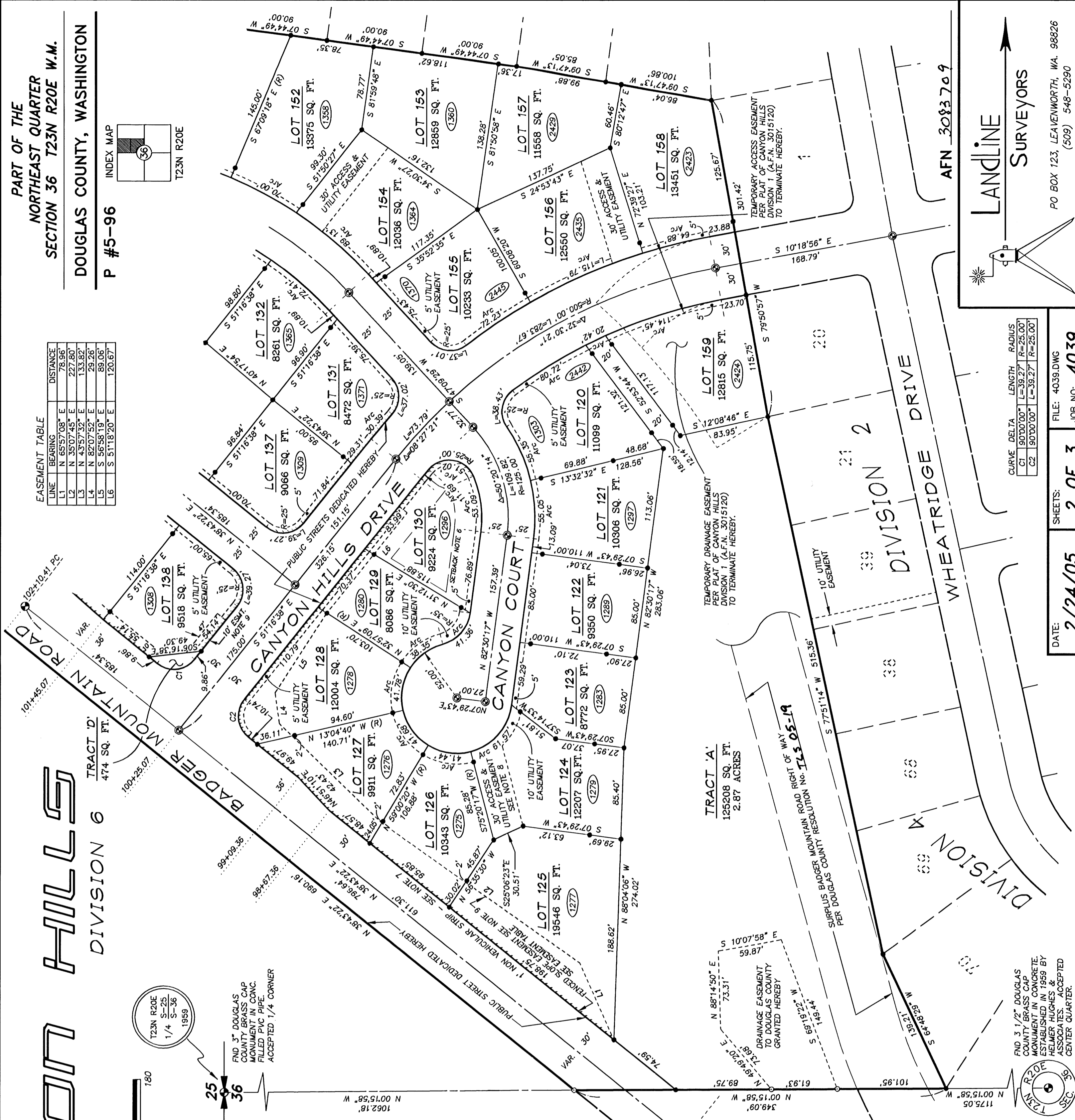
### EQUIPMENT USED

LEICA TCRA1103 PLUS  
ROBOTIC TOTAL STATION

### LEGEND

- ⊙ = SET 5/8" X 2' REBAR W/CAP L.S. #24228 IN MONUMENT CASE
- ⊕ = FOUND CONTROL MONUMENT AS NOTED
- ⊙ = SET 5/8" X 2' REBAR W/CAP L.S. #24228
- ⊕ = SET 5/8" X 2' REBAR W/CAP L.S. #24228 ON LOT LINE 10.00 FT. FROM TRUE CORNER DIMENSION OF TOTAL LOT LINE IS SHOWN
- NOTE: CORNERS MAY BE SET POST CONSTRUCTION AND REBAR MAY BE SET ON PROPERTY LINES AS NEEDED.
- ⊙ = COMPUTED POSITION-NOT FOUND OR SET
- ⊕ = ADDRESS ASSIGNED BY COUNTY
- (R) = RADIAL LINE TO CURVE
- = 1' NON VEHICULAR STRIP - SEE NOTE 7

LINE	BEARING	DISTANCE
L1	N 65°57'08" E	78.96
L2	N 35°07'45" E	227.80
L3	N 43°57'32" E	133.82
L4	N 82°07'52" E	29.26
L5	S 56°58'19" E	89.06
L6	S 51°18'20" E	120.67



**LANDLINE SURVEYORS**

PO BOX 123, LEAVENWORTH, WA. 98826  
(509) 548-5290

DATE: 2/24/05

SHEETS: 2 OF 3

FILE: 4039.DWG

JOB NO: 4039

CURVE	DELTA	LENGTH	RADIUS
C1	90°00'00"	L=39.27	R=25.00
C2	90°00'00"	L=39.27	R=25.00