

PLAT OF

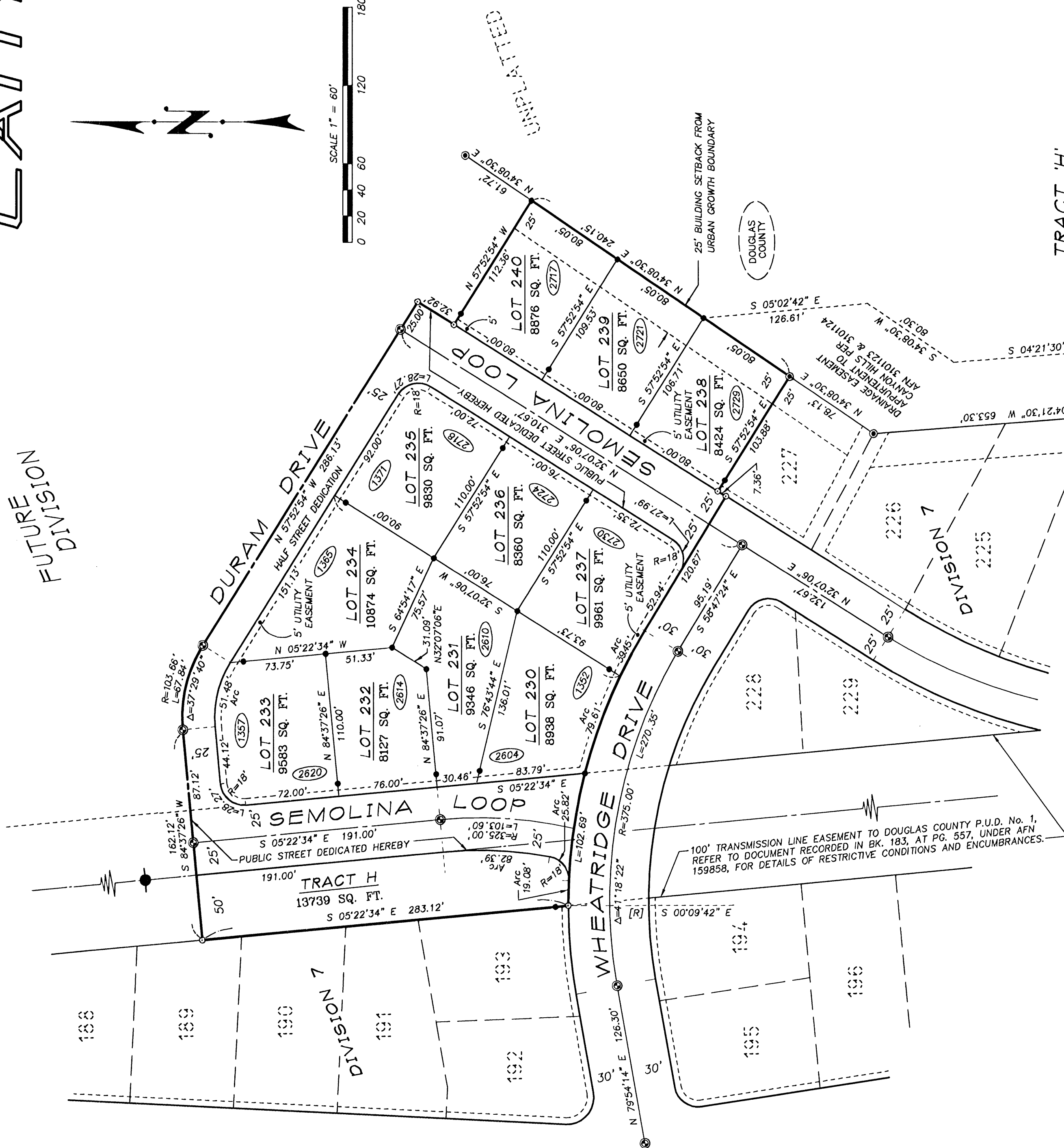
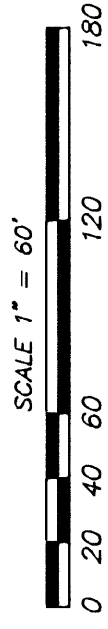
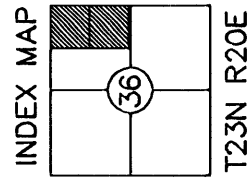
# CANYON HILLS

DIVISION 8

PART OF THE  
NORTHEAST QUARTER  
SECTION 36 T23N R20E W.M.

DOUGLAS COUNTY, WASHINGTON

P #5-96



DATE: 12/06/07

SHEETS: 2 OF 2

FILE: 4039F8.DWG  
JOB NO: 4039

**LANDLINE SURVEYORS**

PO BOX 123, LEAVENWORTH, WA. 98826  
(509) 548-5290

FUTURE NOISE DIVISION

UNDEVELOPED

DOUGLAS COUNTY

DIVISION 1

100' TRANSMISSION LINE EASEMENT TO DOUGLAS COUNTY P.U.D. No. 1, REFER TO DOCUMENT RECORDED IN BK. 183, AT PG. 557, UNDER AFN 159858, FOR DETAILS OF RESTRICTIVE CONDITIONS AND ENCUMBRANCES.