

PLAT OF

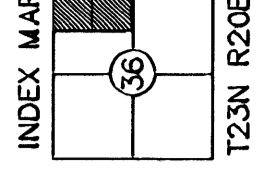
CANYON HILLS

DIVISION 7

PART OF THE
NORTHEAST QUARTER
SECTION 36 T23N R20E W.M.

DOUGLAS COUNTY, WASHINGTON

P #5-96



TRACT 'E' SHEET 2

A NON-BUILDING TRACT TO BE OWNED BY PUBLIC UTILITY DISTRICT NO. 1 OF DOUGLAS COUNTY FOR ACCESS AND UTILITIES TO A SEMI LIFT STATION TO BE OPERATED BY DOUGLAS COUNTY SEMI LIFT STATION NO. 1; PUBLIC UTILITY DISTRICT NO. 1 OF DOUGLAS COUNTY AND DOUGLAS COUNTY SEMI LIFT STATION NO. 1; UNDERLYING EASEMENT TO PUBLIC UTILITY DISTRICT NO. 1 OF DOUGLAS COUNTY, RECORDED IN BK. 183, AT PG. 557 (AFN 159858) AND AGREE THAT THE LIFT STATION MAY CONTINUE TO BE OPERATED AND MAINTAINED IN ITS PRESENT CONFIGURATION WITHOUT EXPANSION OF THE FACILITY'S FOOTPRINT.

TRACTS 'F' and 'G' SHEETS 2 & 3

NON-BUILDING OPEN SPACE TRACTS SUBJECT TO RESTRICTIVE CONDITIONS AND ENCUMBRANCES OUTLINED IN TRANSMISSION LINE EASEMENT TO PUBLIC UTILITY DISTRICT NO. 1 OF DOUGLAS COUNTY, RECORDED IN BK. 183, AT PG. 557 (AFN 159858). TO BE OWNED AND MAINTAINED BY PUBLIC UTILITY DISTRICT NO. 1 OF DOUGLAS COUNTY.

BASIS OF BEARING

A MODIFIED WASHINGTON STATE GRID BASED ON HOLDING DOUGLAS COUNTY PUBLIC WORKS GRID COORDINATE AND ELEVATION ON THE CENTER QUARTER OF SECTION 36. THE PROJECT IS THEN RUN ON GROUND COORDINATES FROM THE CENTER QUARTER BASE POINT. THIS MAP IS ALSO ROTATED 16 SECONDS LEFT FROM THE ORIGINAL CANYON HILLS DIVISIONS 1-5.

METHOD OF BALANCE

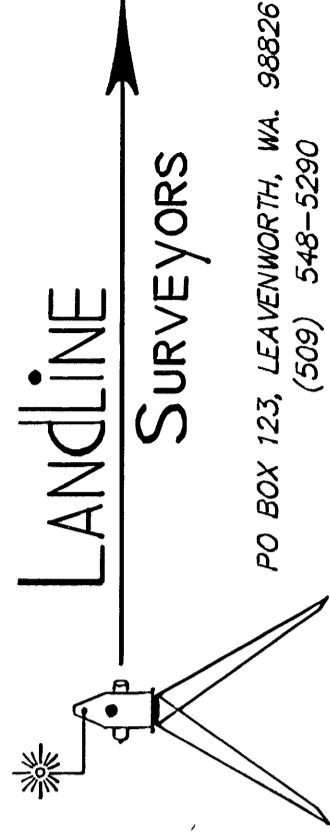
A CLOSED TRAVERSE WAS BALANCED BY COMPASS RULE OF ADJUSTMENT. CLOSURE EXCEEDED 1 IN 10000.

EQUIPMENT USED

LEICA TCR4103 PLUS
ROBOTIC TOTAL STATION

LEGEND

- ⊙ = SET 5/8" X 2' REBAR W/CAP L.S. #24228 IN MONUMENT CASE
- ⊙ = FOUND CONTROL MONUMENT AS NOTED
- ⊙ = SET 5/8" X 2' REBAR W/CAP L.S. #24228 ON LOT LINE 10.00 FT. FROM TRUE CORNER DIMENSION OF TOTAL LOT LINE IS SHOWN
- ⊙ = COMPUTED POSITION-NOT FOUND OR SET
- ⊙(2416) = ADDRESS ASSIGNED BY COUNTY
- [R] = RADIAL LINE TO CURVE
- = POWER TRANSMISSION LINE AND POLE



DATE: 7/21/06 SHEETS: 2 OF 4 JOB NO: 4039



DOUGLAS COUNTY

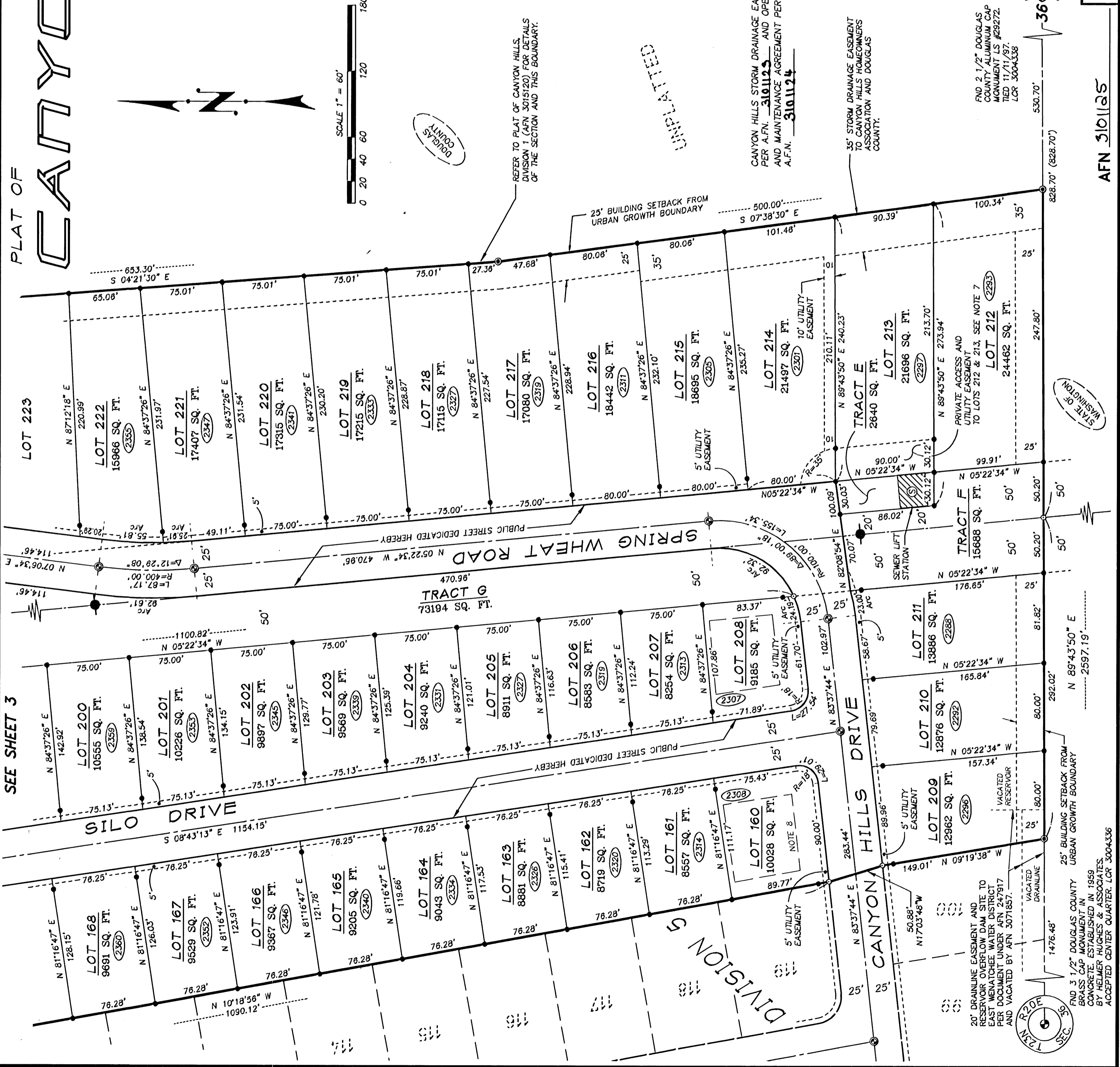
REFER TO PLAT OF CANYON HILLS, DIVISION 1 (AFN 3015120) FOR DETAILS OF THE SECTION AND THIS BOUNDARY.

UNPLATTED

CANYON HILLS STORM DRAINAGE EASEMENT PER A.F.N. 310125 AND OPERATION AND MAINTENANCE AGREEMENT PER A.F.N. 310124

35' STORM DRAINAGE EASEMENT TO CANYON HILLS HOMEOWNERS ASSOCIATION AND DOUGLAS COUNTY.

END 2 1/2" DOUGLAS COUNTY ALUMINUM CAP MONUMENT L.S. #29272. TIED 11/11/97. LCR 3004338



SEE SHEET 3

STATE OF WASHINGTON

25' BUILDING SETBACK FROM URBAN GROWTH BOUNDARY

20' DRAINAGE EASEMENT AND RESERVOIR OVERFLOW DAM SITE TO EAST WENATCHEE WATER DISTRICT PER DOCUMENT UNDER AFN 247917 AND VACATED BY AFN 3071857.

END 3 1/2" DOUGLAS COUNTY BRASS CAP MONUMENT ON CONCRETE ESTABLISHED IN 1959 BY HELMER ESKICH & ASSOCIATES. ACCEPTED CENTER QUARTER. LCR 3004336