

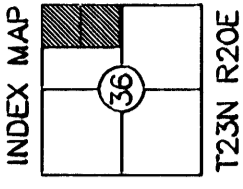
# PLAT OF CANYON HILLS

DIVISION 7

PART OF THE  
NORTHEAST QUARTER  
SECTION 36 T23N R20E W.M.

DOUGLAS COUNTY, WASHINGTON

P #5-96



TRACT 'E' SHEET 2

A NON-BUILDING TRACT TO BE OWNED BY PUBLIC UTILITY DISTRICT NO. 1 OF DOUGLAS COUNTY FOR ACCESS AND UTILITIES TO A SEWER LIFT STATION TO BE OPERATED BY DOUGLAS COUNTY SEWER DISTRICT NO. 1. PUBLIC UTILITY DISTRICT NO. 1 OF DOUGLAS COUNTY AND DOUGLAS COUNTY SEWER DISTRICT NO. 1 UNDERSTAND THAT THE LIFT STATION IS INCONSISTENT WITH UNDERLYING EASEMENT TO PUBLIC UTILITY DISTRICT NO. 1 OF DOUGLAS COUNTY, RECORDED IN BK. 183, AT PG. 557 (AFN 159858), AND AGREE THAT THE LIFT STATION MAY CONTINUE TO BE OPERATED AND MAINTAINED IN ITS PRESENT CONFIGURATION WITHOUT EXPANSION OF THE FACILITY'S FOOTPRINT.

TRACTS 'F' and 'G' SHEETS 2 & 3

NON-BUILDING OPEN SPACE TRACTS SUBJECT TO RESTRICTIVE CONDITIONS AND ENCUMBRANCES OUTLINED IN TRANSMISSION LINE EASEMENT TO PUBLIC UTILITY DISTRICT NO. 1 OF DOUGLAS COUNTY, RECORDED IN BK. 183, AT PG. 557 (AFN 159858), TO BE OWNED AND MAINTAINED BY PUBLIC UTILITY DISTRICT NO. 1 OF DOUGLAS COUNTY.

BASIS OF BEARING

A MODIFIED WASHINGTON STATE GRID BASED ON HOLDING DOUGLAS COUNTY PUBLIC WORKS GRID COORDINATE AND ELEVATION ON THE CENTER QUARTER OF SECTION 36. THE PROJECT IS THEN RUN ON GROUND COORDINATES FROM THE CENTER QUARTER BASE POINT. THIS MAP IS ALSO ROTATED 16 SECONDS LEFT FROM THE ORIGINAL CANYON HILLS DIVISIONS 1-5.

METHOD OF BALANCE

A CLOSED TRAVERSE WAS BALANCED BY COMPASS RULE OF ADJUSTMENT. CLOSURE EXCEEDED 1 IN 10000.

EQUIPMENT USED

LEICA TCRA1103 PLUS  
ROBOTIC TOTAL STATION

7-21-06

LEGEND

- ⊙ = SET 5/8" X 2' REBAR W/CAP L.S. #24228 IN MONUMENT CASE
- ⊕ = FOUND CONTROL MONUMENT AS NOTED
- ⊖ = SET 5/8" X 2' REBAR W/CAP L.S. #24228 ON LOT LINE 10.00 FT. FROM TRUE CORNER DIMENSION OF TOTAL LOT LINE IS SHOWN
- NOTE: CORNERS MAY BE SET POST CONSTRUCTION AND REBAR MAY BE SET ON PROPERTY LINES AS NEEDED.
- ⊙ = COMPUTED POSITION--NOT FOUND OR SET
- (2418) = ADDRESS ASSIGNED BY COUNTY
- [R] = RADIAL LINE TO CURVE
- = POWER TRANSMISSION LINE AND POLE

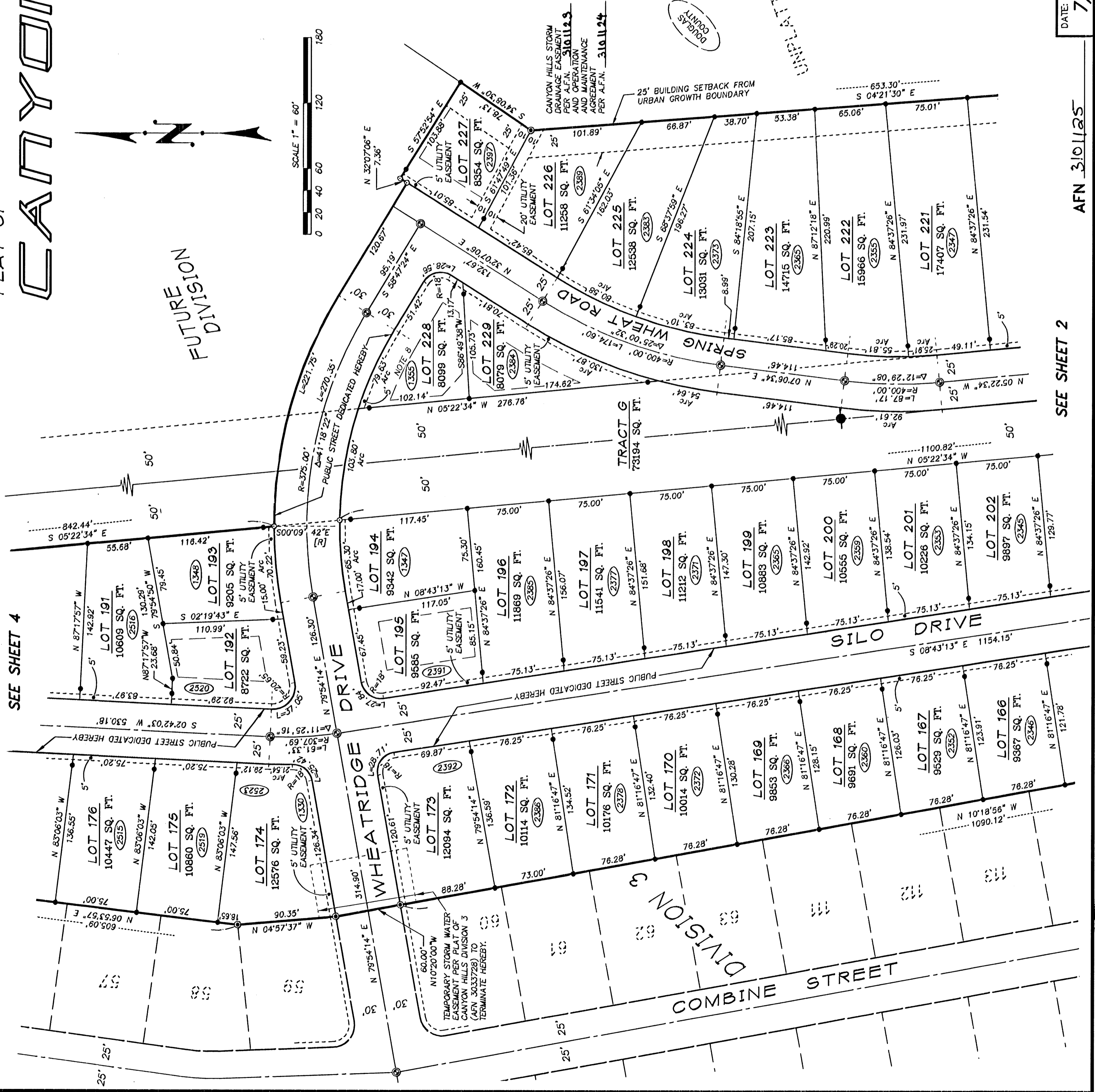
**LANDLINE SURVEYORS**

PO BOX 123, LEAVENWORTH, WA. 98826  
(509) 548-5290

DATE: 7/21/06 SHEETS: 3 OF 4 JOB NO: 4039

AFN 3101125

SEE SHEET 2



UNPLATTED

DOUGLAS COUNTY

CANYON HILLS STORM DRAINAGE EASEMENT PER A.F.N. 3101125 AND OPERATION AND MAINTENANCE AGREEMENT PER A.F.N. 3101124

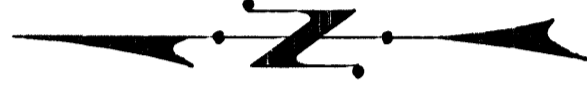
25' BUILDING SETBACK FROM URBAN GROWTH BOUNDARY

TRACT G  
73194 SQ. FT.

SEE SHEET 4

FUTURE DIVISION

SCALE 1" = 60'



COMBINE STREET

WHEATRIDGE DRIVE

SILLO DRIVE

PUBLIC STREET DEDICATED HEREBY

TEMPORARY STORM WATER EASEMENT PER PLAT OF CANYON HILLS DIVISION 3 (AFN 3033728) TO TERMINATE HEREBY.

DIVISION 9