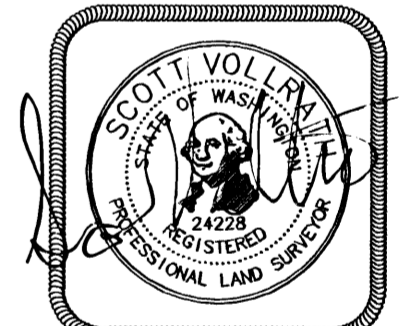
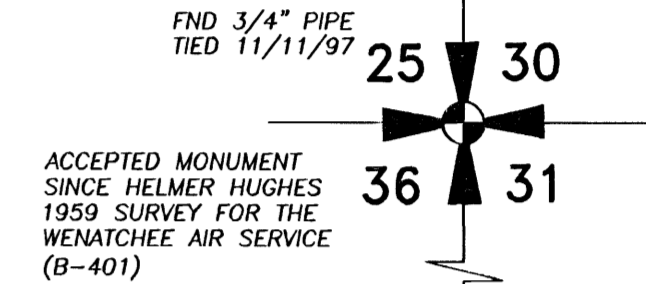
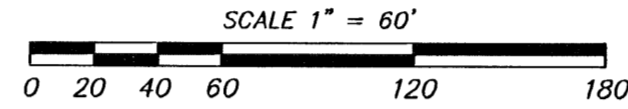
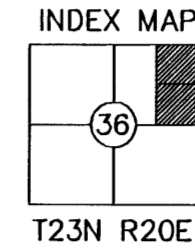


PLAT OF CANYON HILLS

DIVISION 9

PART OF THE
NORTHEAST QUARTER
SECTION 36 T23N R20E W.M.
DOUGLAS COUNTY, WASHINGTON

P #08-06



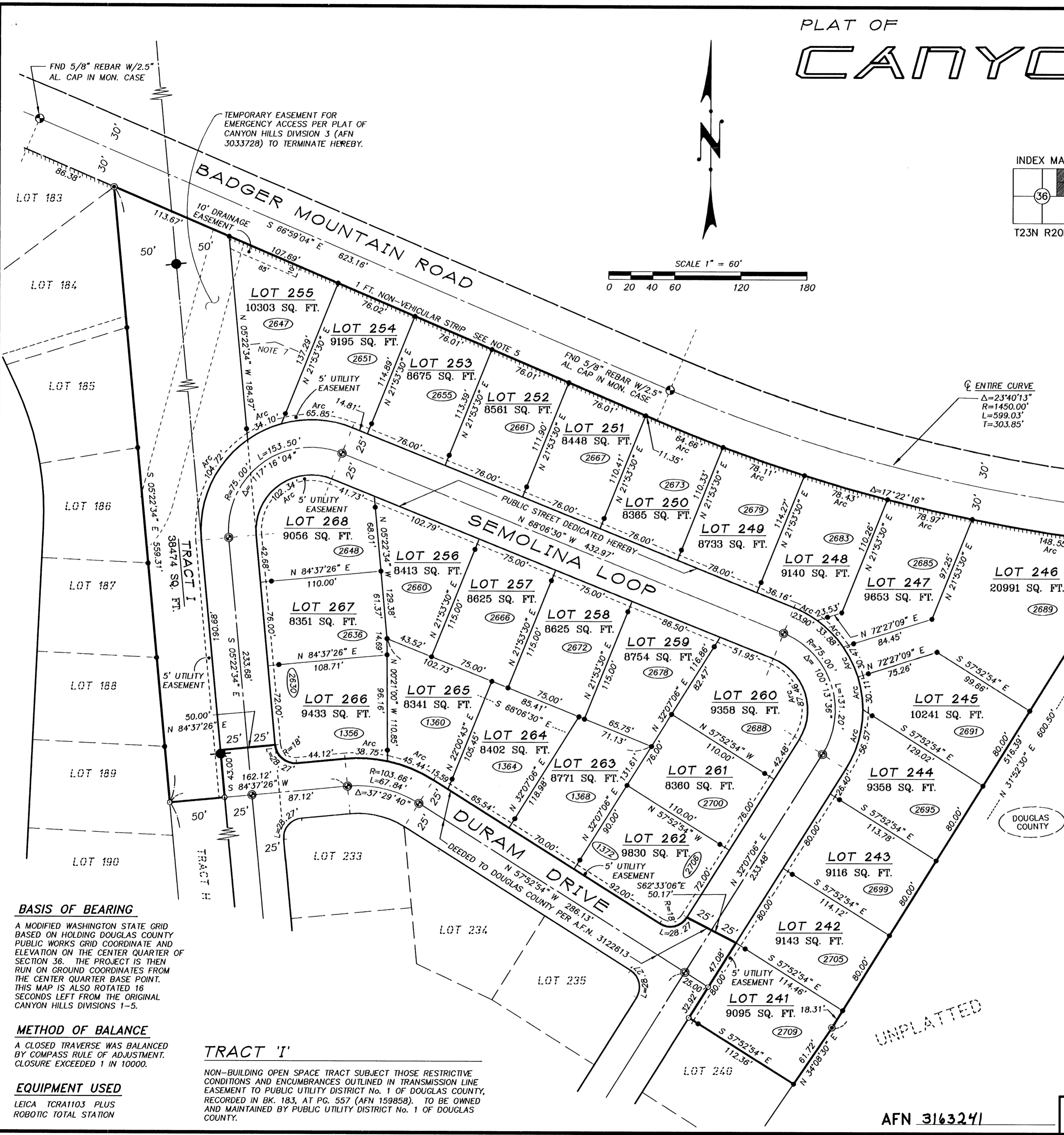
- LEGEND**
- ⊙ = SET 5/8" X 2' REBAR W/CAP L.S. #24228 IN MONUMENT CASE
 - ⊕ = FOUND CONTROL MONUMENT AS NOTED
 - ⊙ = SET 5/8" X 2' REBAR W/CAP L.S. #24228
 - ⊕ = SET 5/8" X 2' REBAR W/CAP L.S. #24228 ON LOT LINE 10.00 FT. FROM TRUE CORNER DIMENSION OF TOTAL LOT LINE IS SHOWN
 - NOTE: CORNERS MAY BE SET POST CONSTRUCTION AND REBAR MAY BE SET ON PROPERTY LINES AS NEEDED.
 - ⊙ = COMPUTED POSITION-NOT FOUND OR SET
 - (2416) = ADDRESS ASSIGNED BY COUNTY
 - [R] = RADIAL
 - ⚡ = POWER TRANSMISSION LINE AND POLE
 - //// = 1' NON VEHICULAR STRIP - SEE NOTE 6

LANDLINE SURVEYORS

PO BOX 123, LEAVENWORTH, WA. 98826
(509) 548-5290

DATE: 9/21/12	SHEETS: 2 OF 2	FILE: 4039F9.DWG JOB NO: 4039
-------------------------	--------------------------	---

AFN 3163241



BASIS OF BEARING
A MODIFIED WASHINGTON STATE GRID BASED ON HOLDING DOUGLAS COUNTY PUBLIC WORKS GRID COORDINATE AND ELEVATION ON THE CENTER QUARTER OF SECTION 36. THE PROJECT IS THEN RUN ON GROUND COORDINATES FROM THE CENTER QUARTER BASE POINT. THIS MAP IS ALSO ROTATED 16 SECONDS LEFT FROM THE ORIGINAL CANYON HILLS DIVISIONS 1-5.

METHOD OF BALANCE
A CLOSED TRAVERSE WAS BALANCED BY COMPASS RULE OF ADJUSTMENT. CLOSURE EXCEEDED 1 IN 10000.

EQUIPMENT USED
LEICA TCR1103 PLUS
ROBOTIC TOTAL STATION

TRACT 'I'
NON-BUILDING OPEN SPACE TRACT SUBJECT THOSE RESTRICTIVE CONDITIONS AND ENCUMBRANCES OUTLINED IN TRANSMISSION LINE EASEMENT TO PUBLIC UTILITY DISTRICT No. 1 OF DOUGLAS COUNTY, RECORDED IN BK. 183, AT PG. 557 (AFN 159858). TO BE OWNED AND MAINTAINED BY PUBLIC UTILITY DISTRICT No. 1 OF DOUGLAS COUNTY.

UNPLATTED