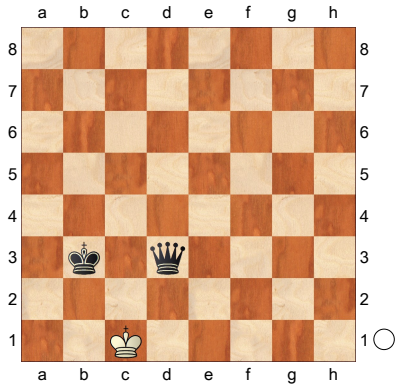
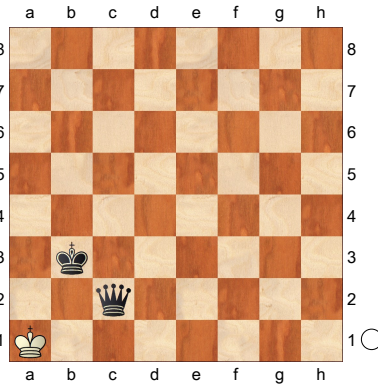


It is white to move. Are the following positions check, checkmate or stalemate?

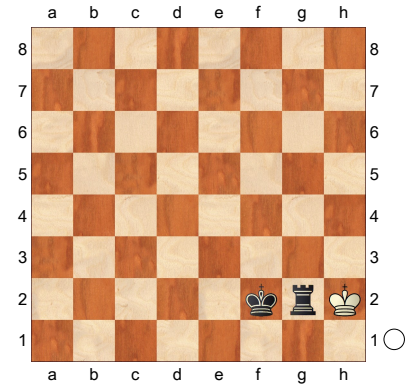
**C, CM or SM 1**



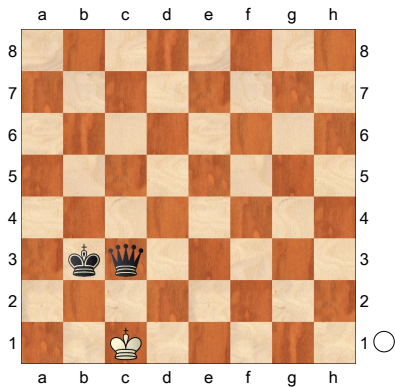
**C, CM, SM 4**



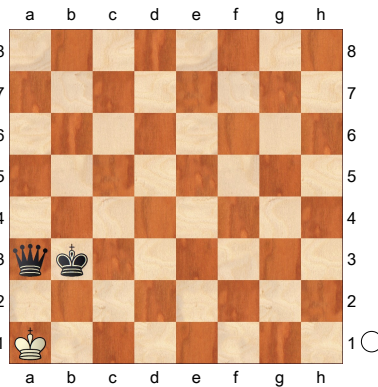
**C, CM, SM 7**



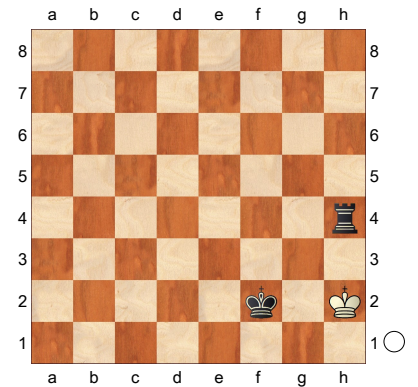
**C, CM or SM2**



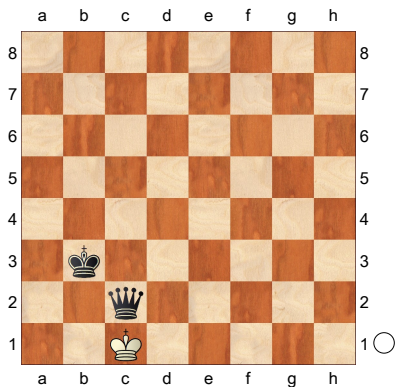
**C, CM, SM 5**



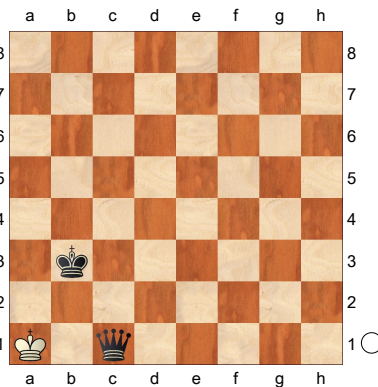
**C, CM, SM 8**



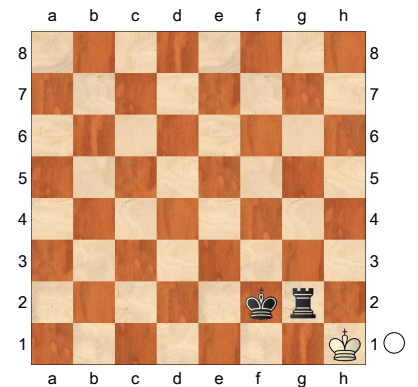
**C, CM, SM 3**



**C, CM, SM 6**

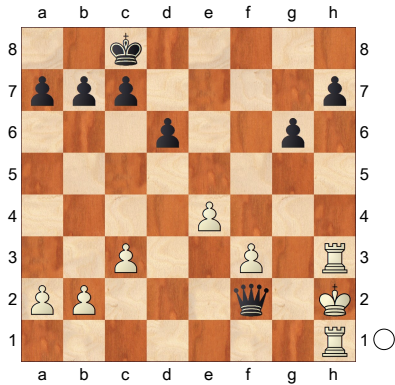


**C, CM, SM 9**

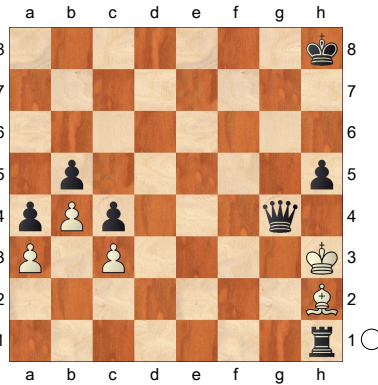


It is white to move. Are the following positions check, checkmate or stalemate?

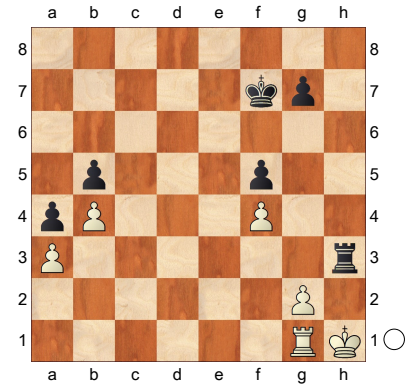
**C, CM, SM 10**



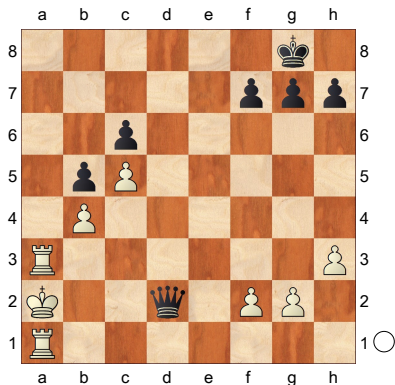
**C, CM, SM 13**



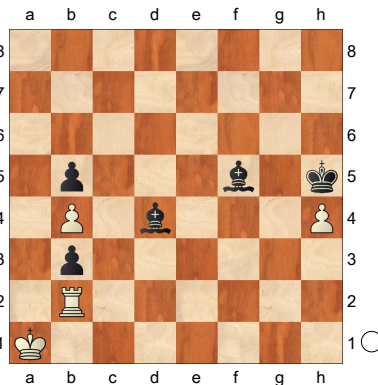
**C, CM, SM 16**



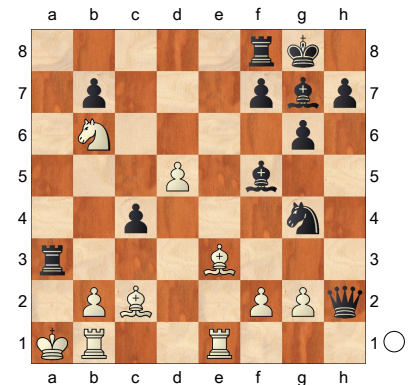
**C, CM, SM 11**



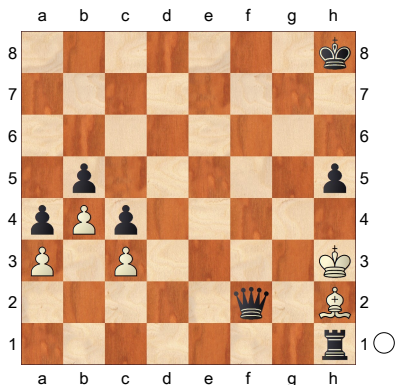
**C, CM, SM 14**



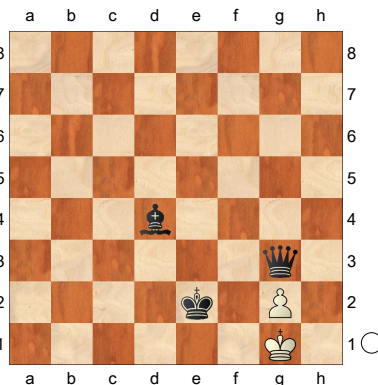
**C, CM, SM 17**



**C, CM, SM 12**



**C, CM, SM 15**



**C, CM, SM 18**

