



# Indian River County Youth Livestock and Horticulture Inc

Cavy Accounting Book  
Show Year 2023-2024



Attach a Photo of Exhibitor AND Project

Exhibitor Name: \_\_\_\_\_ Date of Birth: \_\_\_\_\_

Club Name/Independent Exhibitor Name: \_\_\_\_\_

Show Age (as of 09/01/2023): \_\_\_\_\_

Show Group: \_\_\_\_\_

Junior (8-10)

Intermediate (11-13)

Senior (14-18)

# of years in IRCYLH: \_\_\_\_\_

Ethics Number: \_\_\_\_\_







*Expository Narrative Continued...*

---

---

---

---

---

---

---

---

---

---

---

---

---

---

---

---

---

---

---

---

---

---

---

---

---

---

---

---

---

---



## *Project A Photos*

You must include at least 4 photos of your project but no more than 10 photos. Each photo that is included must have a date and a detailed caption. One of the photos must be a picture of your project's pen(s). Your caption can include why you chose the specific size of the pen, the location of your pen, when was the pen built, who helped build the pen, etc. The remaining photos can be of your grooming/trimming care, feeding routine, health related care, etc. You may also reference some or all photos in your narrative HOWEVER it is not required! Your photos must be placed on the page(s) in chronological order, according to the caption. If necessary, you may print out additional *Project Photos Continued...* pages. ***If you are showing multiples of the same project type, there are additional picture, health, and show record pages in the manual.***



# *Project A Photos Continued...*



# *Project A Photos Continued...*



# *Project A Photos Continued...*





# Personal Exhibitor Goals

Provide 2 goals you would like to achieve while working with this project. Be as specific as possible when stating your goals. You must use complete sentences when completing the goal section. Some topics to consider when stating your goals: What will you use or research to help accomplish your goals? Did you seek out a more experienced exhibitor to assist with achieving your goals? What else did you do to help yourself accomplish your goals? Where you able to accomplish these goals, why/why not? Once your book is graded and returned to you, you will not be finishing any sections and returning it to IRCYLH; for this reason, your goals must NOT be based on you winning Grand/Reserve Grand. Please see the manual for examples of possible goals you can set for yourself as an exhibitor.

## Goal #1

---

---

---

---

---

---

---

---

---

---

---

---

---

---

---

---

---

---

---

---

---

---

---

## Goal #2

---

---

---

---

---

---

---

---

---

---

---

---

---

---

---

---

---

---

---

---

---

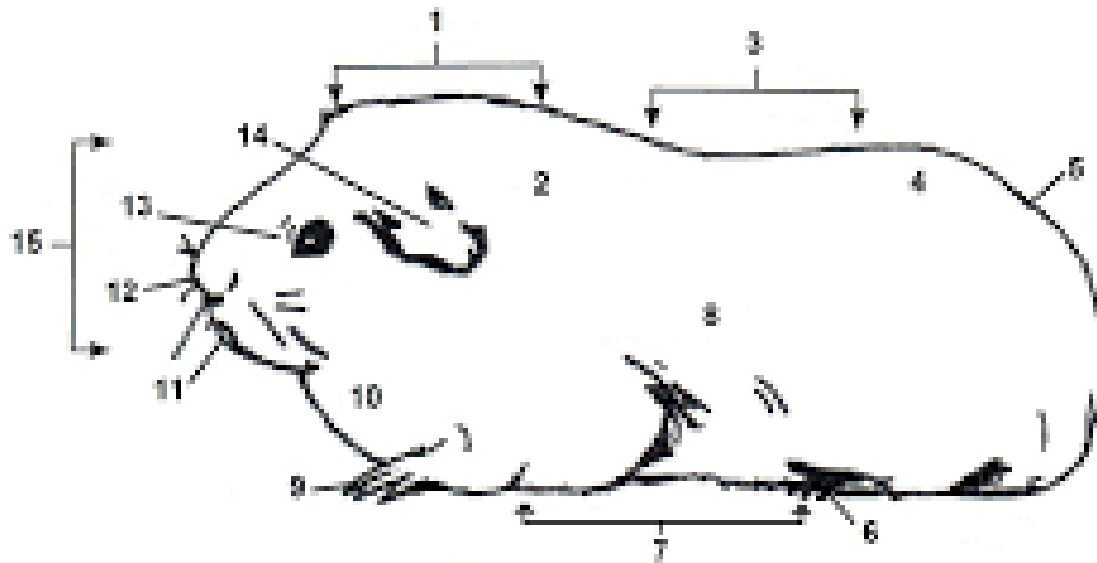
---

---



# Anatomy of a Cavy

Complete the table below by matching the correct name and the body part with its corresponding number from the diagram.



The American cavy

	Shoulder		Ear
	Hindquarter		Back
	Eye		Hip
	Belly		Face
	Mouth		Chest
	Forefoot		Nose
	Crown		Hind leg
	Side of body		



# Expense Record

This section will record any expenses that were incurred for the duration of this project. Expenses will include but are not limited to, purchase price for project, project registration fee, supplies that are needed for the current project, potting soil, spray bottle, watering can, etc. Health expenses will NOT be included in this section. If an additional page is needed, you may print another *Expense Record* page.

<i>Date</i>	<i>Item/Expense</i>	<i>A. Cost</i>
<b>A. Total Expense/Cost</b>		



# Feed Record

In the table below, you will record all feed-related expenses, their weight, if applicable, and the cost for this project. You will include any feeding supplements, feed, hay, or anything your project ingested as part of your feeding program.

You will NOT include any medications in this section. If completing a citrus tree, you will include any fertilizer or additional supplements for the overall health of your tree.

<i>Date</i>	<i>Feed-Related Expense</i>	<i>B. Weight (in lbs. if applicable)</i>	<i>C. Cost</i>



Feed Record Continued...

Date	Feed-Related Expense	B. Weight <i>(in lbs. if applicable)</i>	C. Cost

B. Total weight (in lbs.) \_\_\_\_\_

C. Total Cost: \_\_\_\_\_

D. Total Number of Days on Feed: \_\_\_\_\_  
(start counting days from purchase date of project until March 1<sup>st</sup>, 2024)



## Project A Show Records

Any shows that you have registered for, including but not limited to, Indian River County Fire Fighters' Fair. You will record the registration fee and any premiums you may have earned at the show.

<i>Date</i>	<i>Name of Show</i>	<i>F. Registration Fee</i>	<i>G. Premiums Earned</i>
<b>Totals</b>		<b>F. \$</b>	<b>G. \$</b>

## Project A Health Record

In the table below, include the date given, medication given, the withdrawal time (if applicable), and cost.

<i>Date</i>	<i>Medication</i>	<i>Dosage</i>	<i>Withdrawal Time</i>	<i>E. Cost</i>
<b>E. Total Cost</b>				<b>\$</b>



# Project Financial Summary

## Show Record:

1. Registration Fee(s) total

If showing multiples, include reg. fees for ALL

1. \_\_\_\_\_

2. Premiums Earned total

If showing multiples, include premiums for ALL

2. \_\_\_\_\_

3. Total Earned

(subtract) Premiums from Registration Fee) Profit/Loss

3. \_\_\_\_\_

## Expenses: If showing multiples, include expenses for ALL

4. Expenses (see table on page)

4. \_\_\_\_\_

5. Health Expense

5. \_\_\_\_\_

6. Feed Expense

6. \_\_\_\_\_

7. Total Expenses

(add all expenses together)

7. \_\_\_\_\_

## Project Profit or Loss:

8. Subtract Line 8 from Line 12

Subtract Total Earned from Total Expenses

8. \_\_\_\_\_

9. Profit or Loss—write on line

9. \_\_\_\_\_



# Ethical Statement and Acknowledgement

I \_\_\_\_\_, have completed my livestock or agriculture project using the moral codes I have developed and were trained on during my ethics training, in accordance with animal agriculture practices. I have been and continue to be responsible for the proper care of my livestock or agriculture project, the production of wholesome food (if applicable), and development of sound moral character in myself and others.

I hereby certify that any drug, antibiotic, or biological substance which may have been administered by myself or by any other person, was done so in strict compliance with the manufacturer's label requirements or as prescribed by a veterinarian.

Signature of exhibitor:

---

Signature of parent or guardian:

---

In your neatest handwriting, please copy the following statement on the provided lines below.

**"I affirm that I have completed this record book, in my own handwriting (where applicable), on my own accord, with minimal assistance."**

---

---

---

---

---

---

---

---

---

---

---

---

---

---

---

---

---

---

---

---

---

---

---

