

# Caddo Nation Resilience Plan

---

Caddo Membership Meeting Update

April 20, 2024

# Why a Resilience Plan for Caddo Nation?

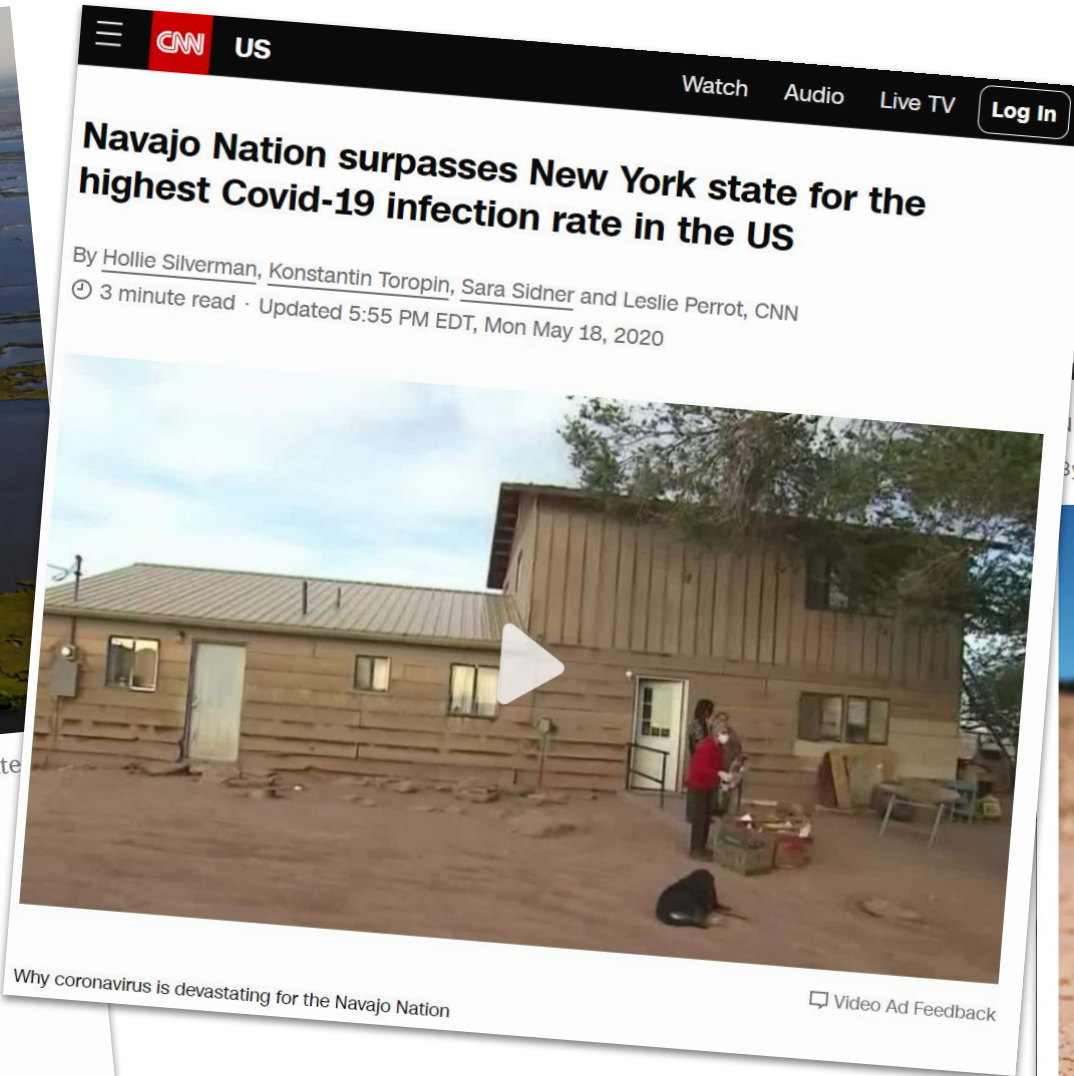


Isle de Jean Charles in southeastern Louisiana. A \$48 million federal grant has been allocated to resettle its residents because of flooding. Josh Haner/The New York Times

## CARBON'S CASUALTIES

### Resettling the First American 'Climate Refugees'

A \$48 million grant for Isle de Jean Charles, La., is the first allocation of federal tax dollars to move an entire community struggling with the effects of climate change.



## Navajo Nation surpasses New York state for the highest Covid-19 infection rate in the US

By Hollie Silverman, Konstantin Toropin, Sara Sidner and Leslie Perrot, CNN  
3 minute read · Updated 5:55 PM EDT, Mon May 18, 2020



Why coronavirus is devastating for the Navajo Nation

Video Ad Feedback



## How loss of historical lands makes Native Americans more vulnerable to climate change

NOVEMBER 2, 2021 · 7:00 AM ET  
by Rachel Treisman

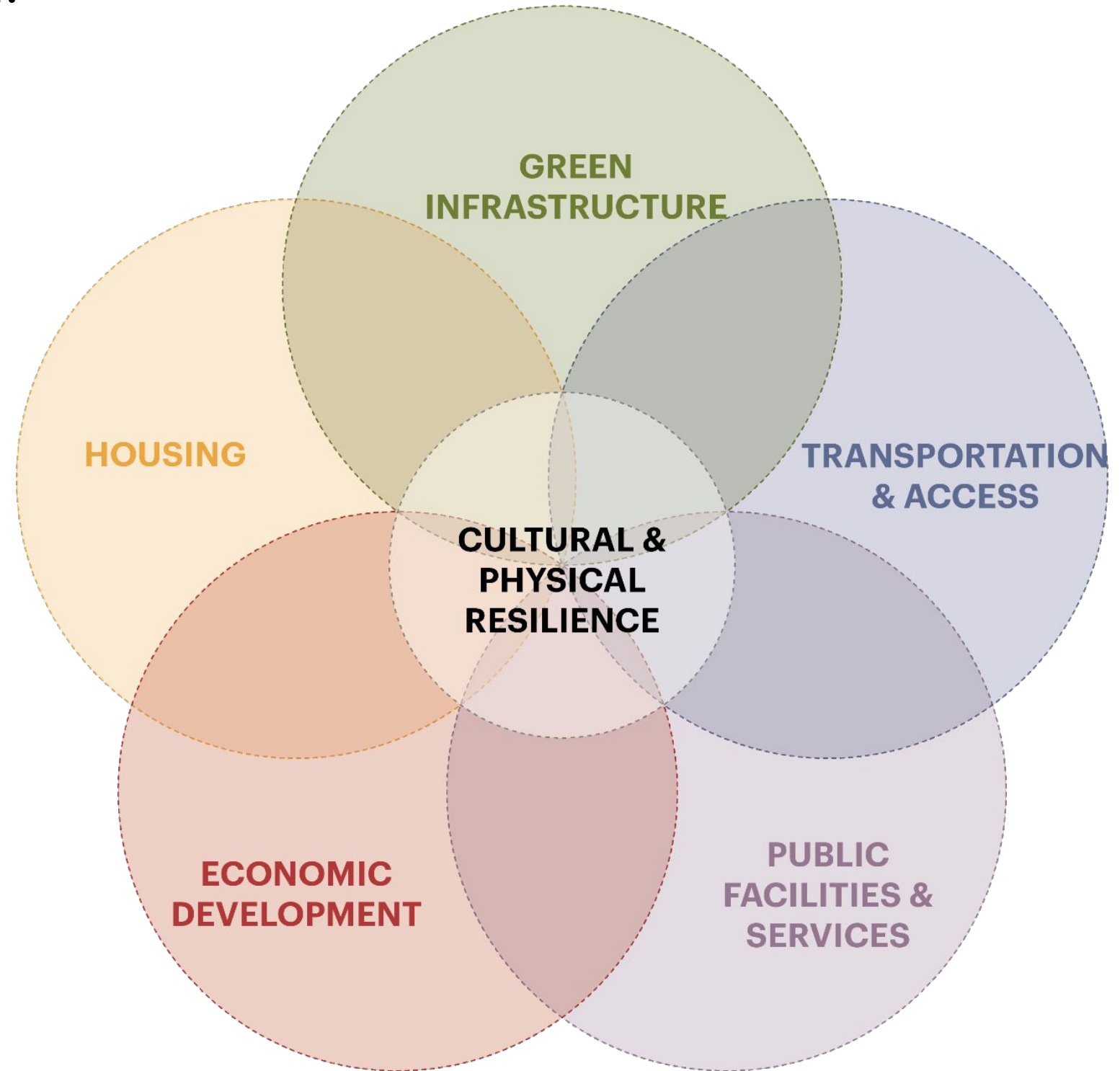


A dry landscape pictured on Navajo Nation is seen in the town of Gallup, N.M., in June 2019. New research says the near-total loss of tribal lands in the U.S. has left Indigenous people more vulnerable to climate change. Spencer Platt/Getty Images

Cities and states nationwide are creating resilience plans to withstand severe weather events and pandemics, yet these plans often overlook historical factors making communities of color more vulnerable, neglecting cultural resilience and self-determination; Indigenous communities have long engaged in culturally-centered resilience planning, with the Caddo Nation set to pioneer a comprehensive Resilience Plan for other Tribes.

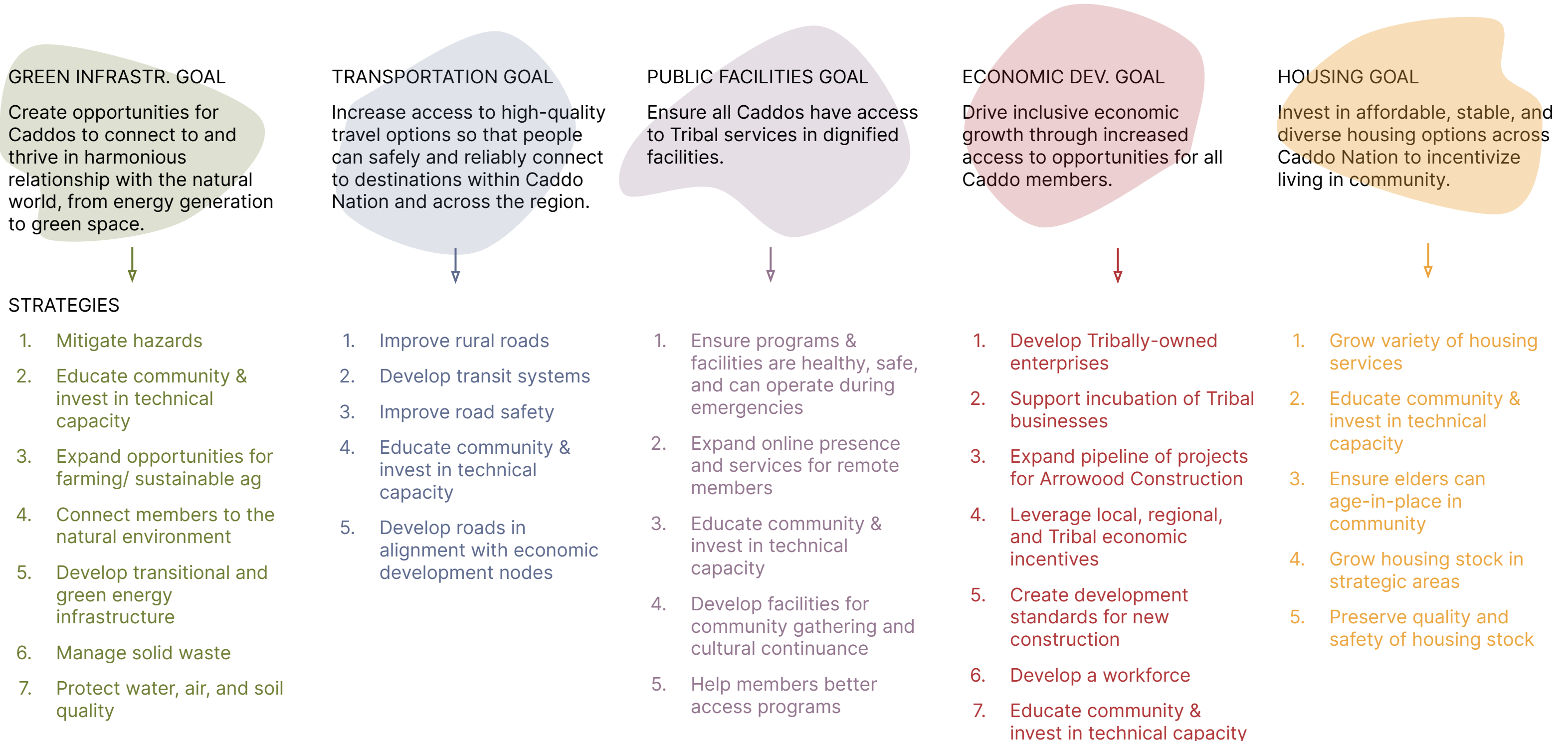
## How will this Resilience Plan be used?

- + Provides an implementation roadmap for **where, what,** and **when** to develop/renovate the built environment across the Nation over time
- + Reflects the consensus built around governmental and community **priorities** for cultural resilience during the planning process
- + Consolidates recommendations for all Caddo administrative departments in **one easy-to-find** place
- + Streamlines applications for grant funding and building permitting on future Caddo developments
- + Is a **living plan and can adapt** to evolving community and administrative priorities in years to come



# What will the Resilience Plan focus on?

VISION | **Striving towards cultural resilience and self-sufficiency, the Caddo Nation envisions a thriving community where all members have access to culturally-centered spaces, affordable housing, sustainable infrastructure, and economic opportunities, embodying a model of stewardship, connection, and prosperity for future generations.**



# Who is this Resilience Plan for?

**IMPACT REALM**

**Economic Development**

**Housing & Homeownership**

**Green Infrastructure**

**Transportation & Accessibility**

**Public Facilities & Services**

INTERSECTING  
CADDO  
GOVERNMENT  
PROGRAMS

Job Opportunities

Housing

Environment  
Firefighters  
Security/SORNA

Transportation

Community Health  
Child Care  
Education  
Enrollment  
ICW/Social Services  
Administration on Aging

CONSTITUENTS

↓  
People seeking employment  
Working people  
Students entering the workplace

↓  
Elderly people seeking rental housing  
Families seeking rental housing  
Individuals seeking emergency housing  
Individual seeking homeownership  
Individuals seeking home improvement resources

↓  
Households, businesses, and established addresses disposing of waste and recycling  
People most at risk during natural or manmade disasters

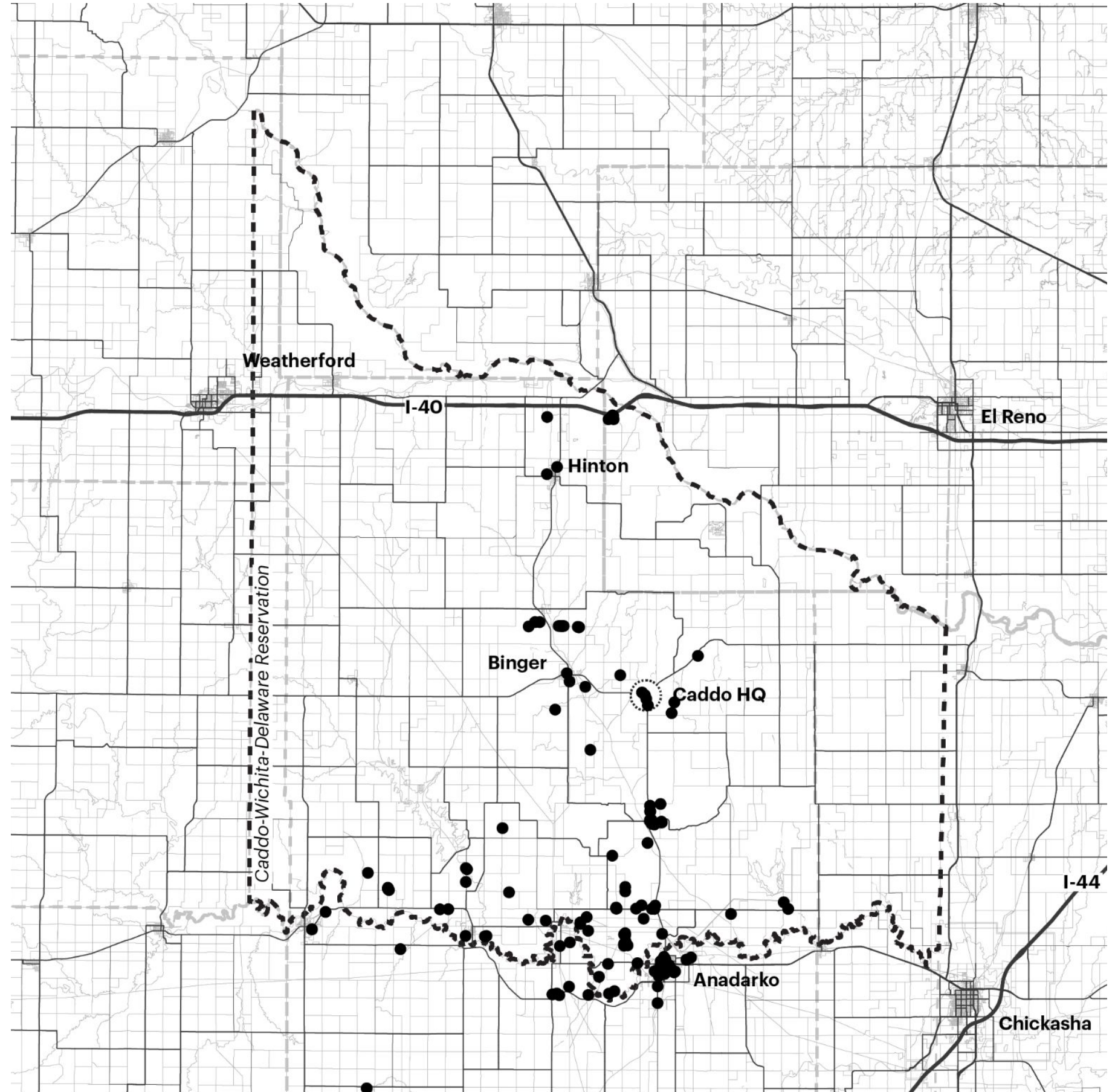
↓  
People who drive  
People who take public transportation  
People who bike  
People who walk  
People with physical disabilities

↓  
People seeking healthcare  
Children 0-5 yrs  
Students K-12  
People living on and off reservation  
Children at risk of removal from their homes/parents  
Adults facing domestic abuse

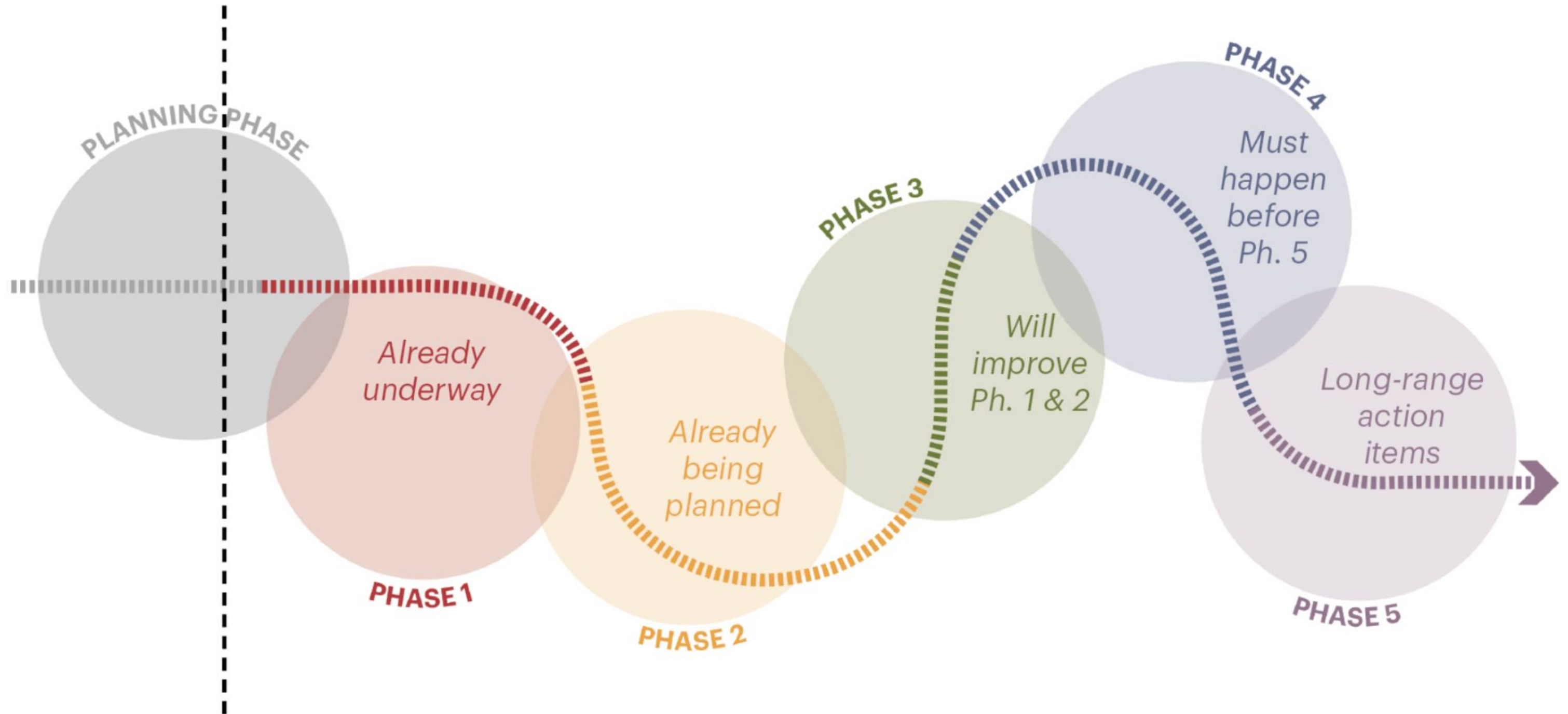


# Where will the Resilience Plan focus?

- + Across Caddo County with particular focus on Caddo-owned properties (black dots on the map)



# When will we see progress?



**We are here!** You will have the opportunity to provide feedback throughout the next five phases.