

# OAKWOOD HARBOR SECTION 5

A Subdivision Located in The SE 1/4 of Section 3, T11N, R12E, 1B BM, McIntosh County, Oklahoma

STATE OF OKLAHOMA )  
COUNTY OF MCINTOSH )  
I, \_\_\_\_\_, do hereby certify that this  
instrument was filed for record  
in my office  
this \_\_\_\_\_ day of \_\_\_\_\_, 19\_\_\_\_  
at \_\_\_\_\_, Oklahoma  
Notary Public  
My Comm. Expires \_\_\_\_\_

### PROPERTY DESCRIPTION

A tract of land located in the SE 1/4 of Section 3, T11N, R12E, 1B BM, McIntosh County, Oklahoma, being more particularly described as follows: BEGINNING at the Northeast corner of the SW 1/4 SW 1/4 SW 1/4 of said Section 3 being a Corp of Engineers Brass Cap; thence S89°17'58"W for a distance of 101.89 feet; thence S81°33'58"W for a distance of 281.05 feet; thence S10°17'58"W for a distance of 101.89 feet; thence S81°33'58"W for a distance of 49.41 feet; thence S64°10'08"E for a distance of 76.98 feet; thence S88°43'22"E for a distance of 44.73 feet; thence S88°21'03"E for a distance of 107.99 feet; thence S72°22'22"E for a distance of 103.98 feet; thence S62°31'12"E for a distance of 159.99 feet; thence S73°27'57"E for a distance of 36.41 feet; thence S88°23'49"E for a distance of 227.46 feet; thence S68°48'11"E for a distance of 222.71 feet; thence S59°09'09"E for a distance of 29.12 feet; thence S28°21'51"W for a distance of 71.06 feet; thence S12°55'31"W for a distance of 200 feet; thence S30°00'00"W for a distance of 40.08 feet; thence S12°55'31"W for a distance of 10 feet; thence S89°17'58"W for a distance of 8.30 feet; thence S28°21'51"W for a distance of 14.02 feet; thence S89°17'58"W for a distance of 200 feet; thence S7°31'16"W for a distance of 49.20 feet; thence S12°55'31"W for a distance of 70 feet; thence S89°17'58"W for a distance of 8.33 feet; thence S28°21'51"W for a distance of 10 feet; thence S89°17'58"W for a distance of 200 feet; thence S7°31'16"W for a distance of 71 feet; thence S89°17'58"W for a distance of 208.34 feet to the Northeast corner of the SW 1/4 SW 1/4 SW 1/4 of said Section 3 being a Corp of Engineers Brass Cap; thence S89°17'58"W on the North boundary line of the SW 1/4 SW 1/4 SW 1/4 of said Section 3 for a distance of 295.59 feet to the Southeast corner of the SW 1/4 SW 1/4 SW 1/4 of said Section 3 being a Corp of Engineers Brass Cap; thence S71°24'26"W for a distance of 322.40 feet to the Point of BEGINNING, containing 31.48 Acres, more or less.

### SURVEYOR'S CERTIFICATE

KNOW ALL MEN BY THESE PRESENTS, that I, Basil E. Scott, Jr., Registered Professional Surveyor in the State of Oklahoma, have carefully and accurately surveyed the above tract of land known as \_\_\_\_\_ as Addition to \_\_\_\_\_ County, Oklahoma and that this is a representation.

WITNESS MY HAND AND SEAL THIS 15th DAY OF August, 1983.  
Basil E. Scott, Jr.  
Basil E. Scott, Jr., R.S. 30, 353

STATE OF OKLAHOMA )  
COUNTY OF MCINTOSH )

BEFORE ME, THE UNDERSIGNED, a Notary Public in and for said County and State, this 15th day of August, 1983, personally appeared Basil E. Scott, Jr., to me known to be the identical person who subscribed his name to the foregoing instrument and acknowledged to me that he executed the same as his free and voluntary act and deed and the free and voluntary act and deed of SCOTT & ASSOCIATES, INC., for the uses and purposes therein set.

WITNESS MY HAND SEAL ON THE DAY AND YEAR LAST ABOVE WRITTEN:

MY COMMISSION EXPIRES: Feb. 21, 1987

### CERTIFICATE OF COUNTY TREASURER

All ad valorem taxes are paid on this land through the taxable year of 1983.  
\_\_\_\_\_  
County Treasurer,  
County, Oklahoma  
\_\_\_\_\_  
Deputy



OWNER'S CERTIFICATE  
IN TESTIMONY WHEREOF, National Development Company, Inc. has caused these presents to be signed by its President and Secretary and its seal affixed this 15th day of August, 1983.  
ATTEST: \_\_\_\_\_ Secretary

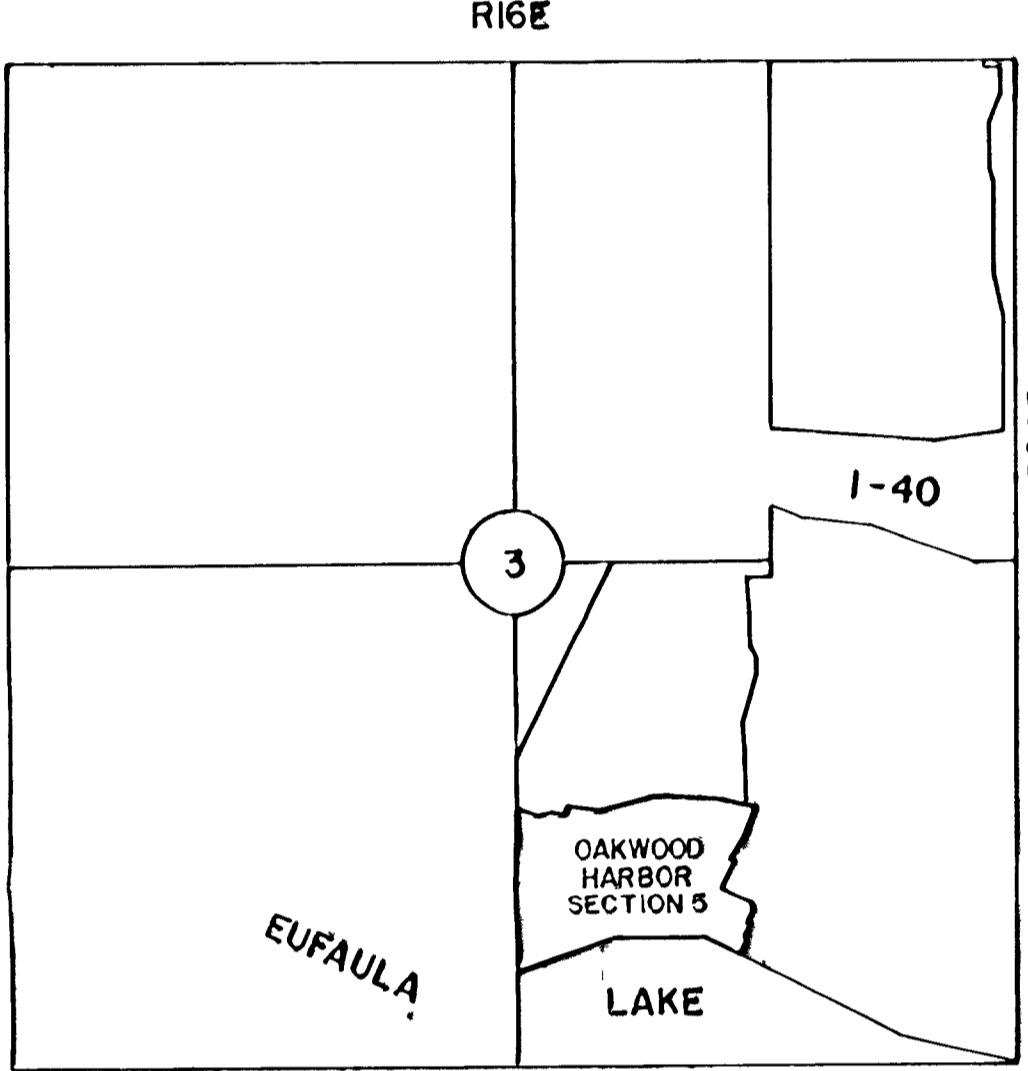
STATE OF TEXAS  
COUNTY OF DALLAS

On this 15th day of August, 1983, before me personally appeared Robert J. Sabloska and Karen Llewellyn to me personally known, who being by me duly sworn did say that they are the President and Secretary, respectively of National Development Company, Inc., a corporation and the seal affixed to this instrument is the seal of said corporation by authority of its governing body and that said President acknowledged said instrument to be the free act and deed of said corporation.  
IN TESTIMONY WHEREOF, I have hereunto set my hand and affixed my official seal as my office in Dallas County, Texas and year above written.

\_\_\_\_\_  
Notary Public

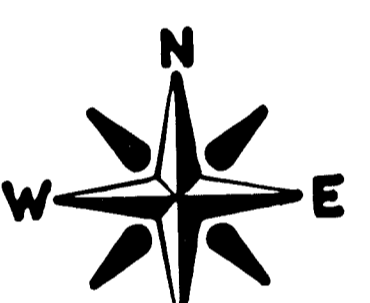
### HEALTH DEPARTMENT APPROVAL

John A. Givler, R.P.S. 0282  
Date 3-29-84  
I certify that I have approved the APPLICATION & PRELIMINARY PLAN for this PLAT  
A COPY OF WHICH IS ON FILE IN THE McIntosh County Health Dept. and hereby advise  
this PLAT FOR THE USE OF NEW COMMUNITY WATER SYSTEM & COMMUNITY SEWER SYSTEMS.

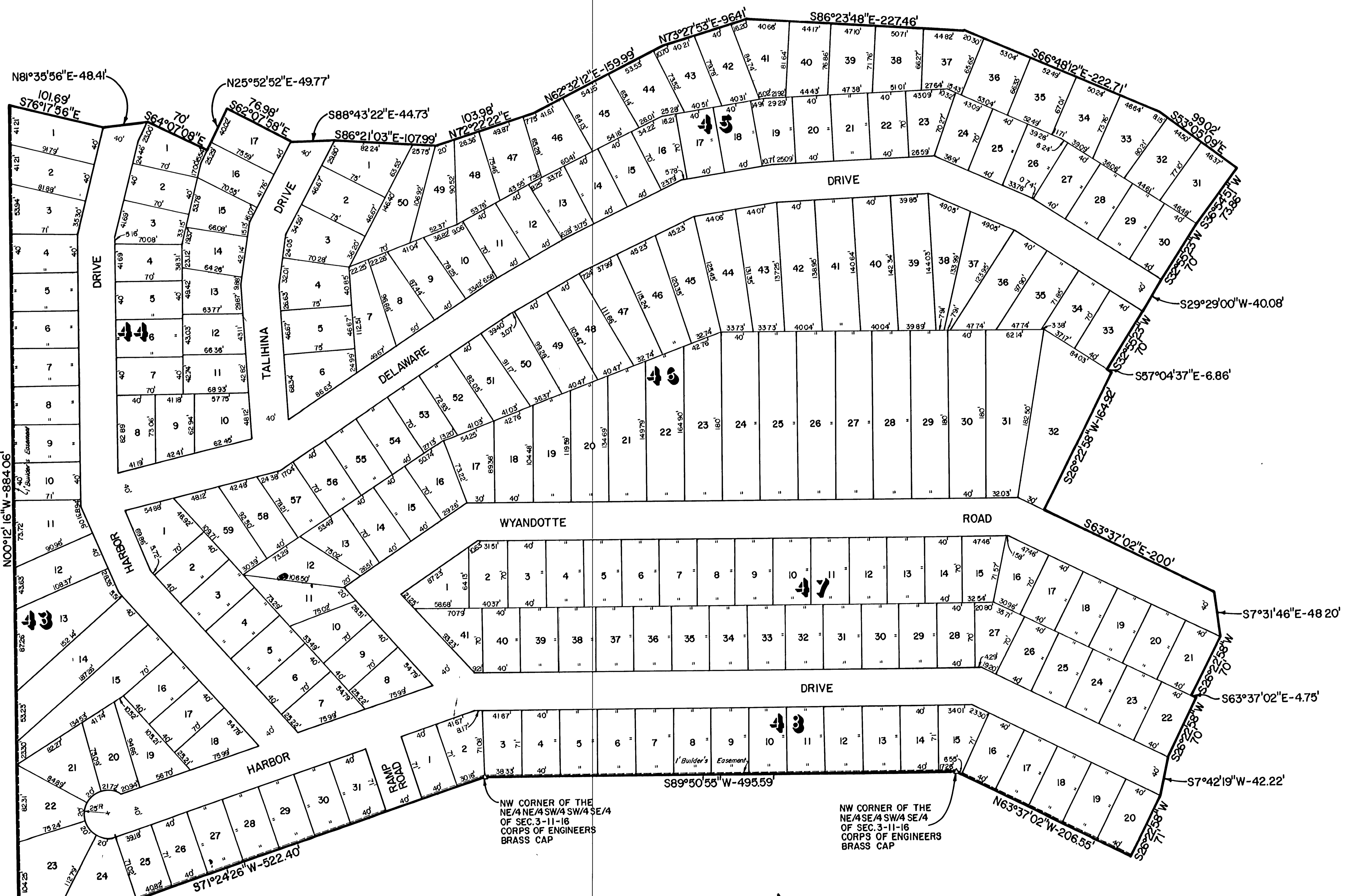


LOCATION MAP  
SCALE 1"=1000'

218 LOTS



SCALE 1"=50'



POINT OF BEGINNING  
NW CORNER OF THE  
SW 1/4 NW 1/4 SW 1/4  
SE 1/4 OF SEC. 3-11-18  
CORP OF ENGINEERS  
BRASS CAP

PREPARED BY  
**SCOTT & ASSOCIATES, INC.**  
(918)682-7577 901B Callahan  
Muskogee, Oklahoma  
74401