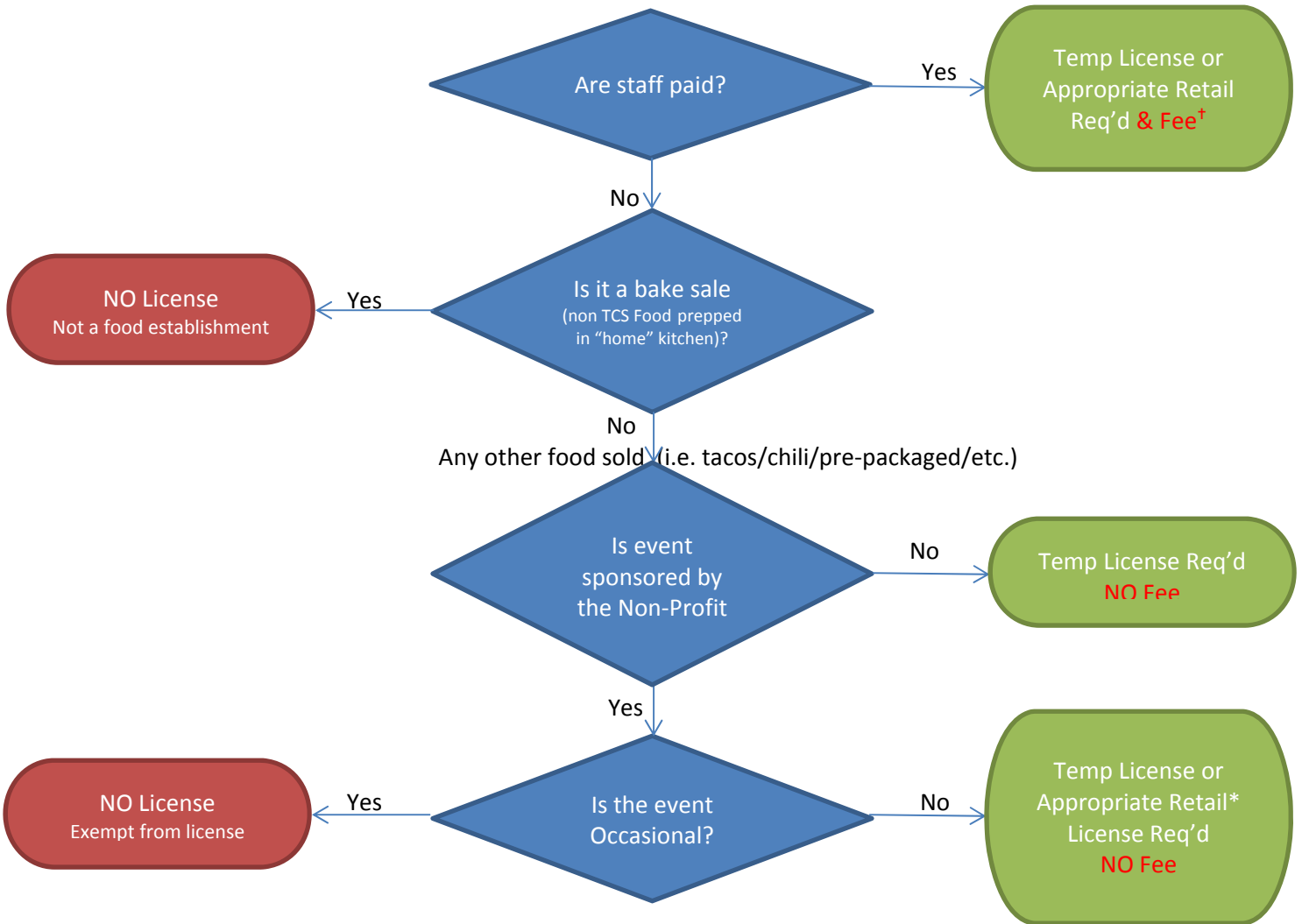


Charitable, Non-Profit, Religious Organizations



†The fee for a charitable, non-profit, or religious organization that uses paid staff would be the fee typically associated with an E1 – E3.

*Occasional means an event occurs four times or less per year. If monthly, more than 4 times per year, “spaghetti dinners” are being prepared and sold AT the non-profit organization (or same place every month), then a food service license may be issued.