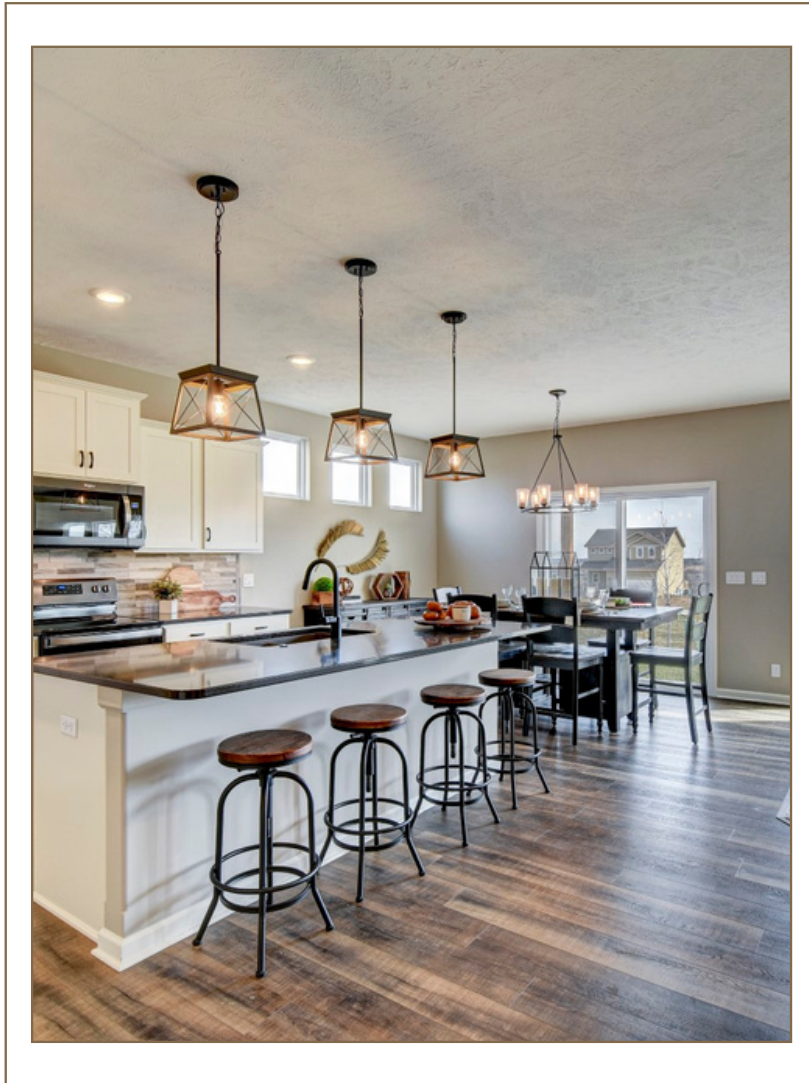


# RICHLAND HOMES



Lets build  
your dream home  
together.

Better  
Homes  
and Gardens.  
REAL ESTATE

THE  
GOOD LIFE  
GROUP



REALTY GROUP

---

# Meet Your Richland Homes Sales Agents



**Heather  
Chaney**



**402.216.5705**

heather.chaney@betteromaha.com

REALTOR, HOMELIFE REALTY GROUP | BHGRE



THE  
GOOD LIFE  
GROUP



REALTY GROUP



**Shannon  
Bartling**



**402.881.2572**

shannon.bartling@betteromaha.com

REALTOR, HOMELIFE REALTY GROUP | BHGRE

**VISIT US AT OUR MODELS:**

**8605 N 177TH or 8601 N 176TH**

**BENNINGTON**

# COMMUNITES



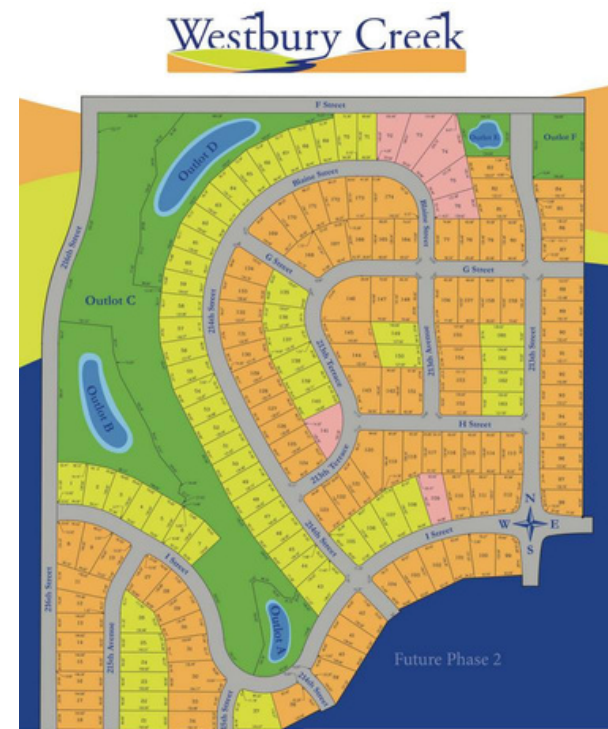
**BENNINGTON/ELKHORN**

**CHESTNUT HILLS**  
177TH & STATE ST



**GRENTA**

**HILLS OF ASPEN CREEK**  
180TH & CORNHUSKER



**ELKHORN**

**WESTBURY CREEK**  
213TH & F STREET



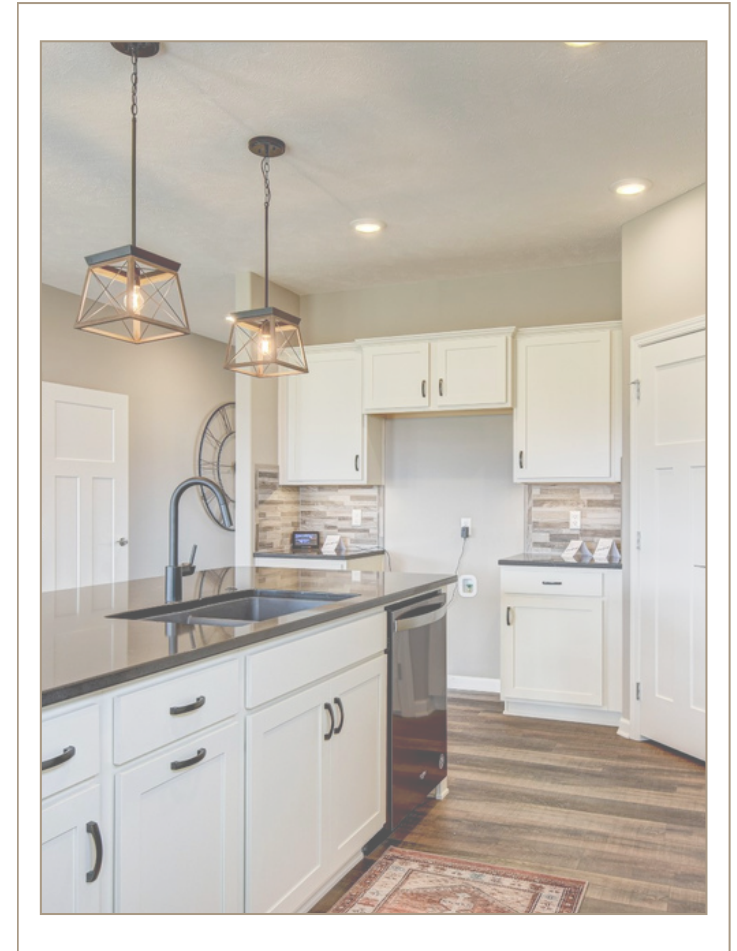
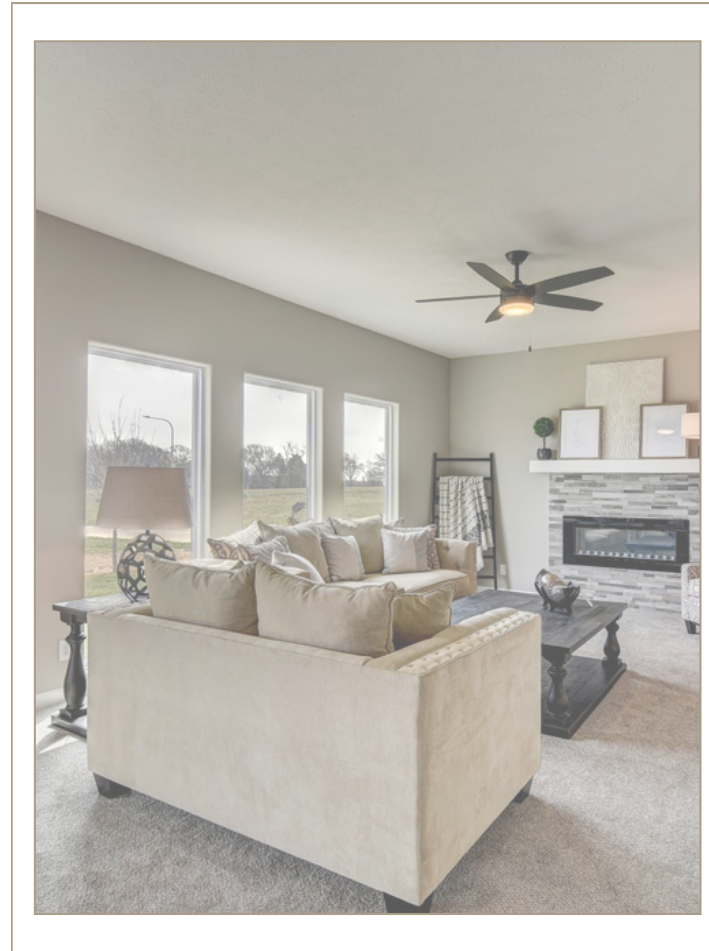
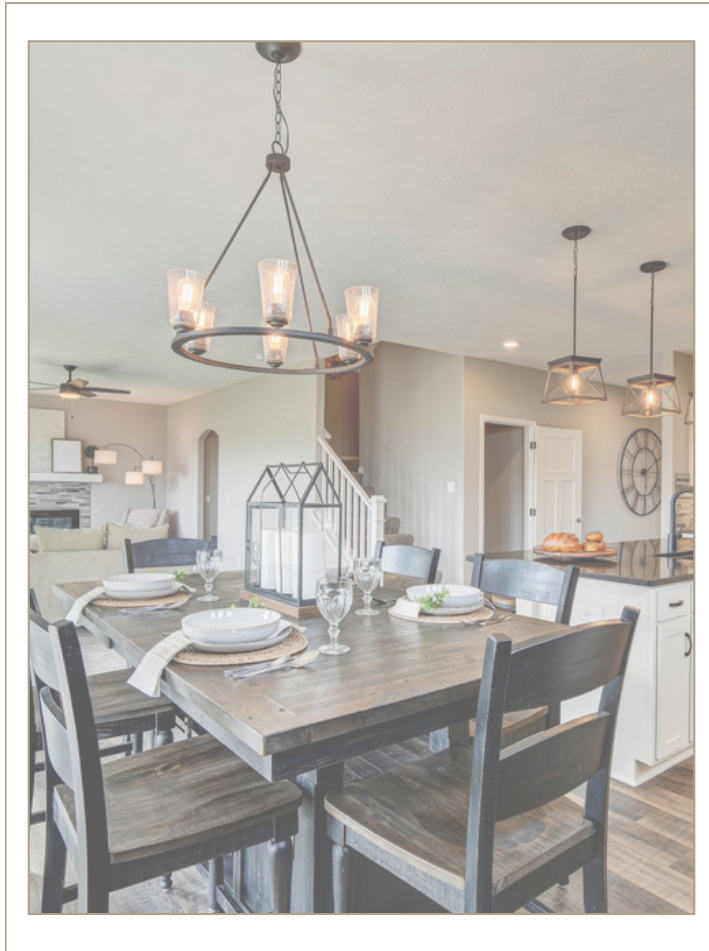
**PAPILLION**

**GRANITE FALLS NORTH**  
114TH & LINCOLN

**RICHLAND HOMES ALSO BUILDS IN COUNCIL BLUFFS AND LINCOLN.**

# TWO STORY PLANS

RICHLAND  
HOMES





### TWO STORY

- 2,176 SF
- 3 BEDROOMS & FLEX ROOM ON MAIN
- 3 BATHROOMS
- 3 CAR GARAGE
- SPRINKLER SYSTEM/JAMES HARDIE SIDING

# the Pearl

**TAKE A TOUR**

### OPTIONAL ITEMS:

- FINISHED BASEMENT
- GARAGE EXTENSIONS
- TALLER GARAGE DOORS
- SMART HOME TECHNOLOGIES
- 3 ELEVATIONS TO CHOOSE FROM
- BUILD IN BENNINGTON, GRETNA, ELKHORN, PAPIILLION, COUNCIL BLUFFS AND LINCOLN

BASE PRICE STARTING AT **\$331,500**



**MAIN FLOOR**



**2ND LEVEL**



**CRAFTSMAN**



**FARMHOUSE**



**MODERN PRAIRIE**

**elevations**



## TWO STORY

- 2,189 SF
- 4 BEDROOMS
- 3 BATHROOMS
- 3 CAR GARAGE
- SPRINKLER SYSTEM/JAMES HARDIE SIDING

# the Diamond

**TAKE A TOUR**

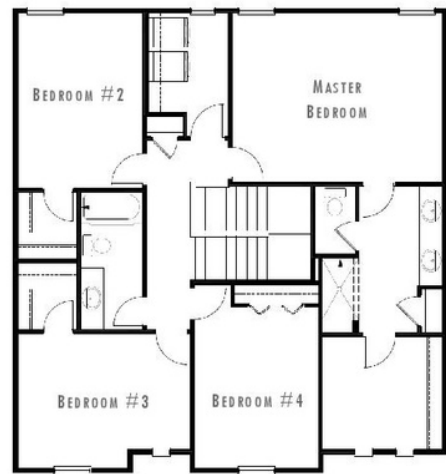
## OPTIONAL ITEMS:

- FINISHED BASEMENT
- GARAGE EXTENSIONS
- TALLER GARAGE DOORS
- SMART HOME TECHNOLOGIES
- 3 ELEVATIONS TO CHOOSE FROM
- ELECTRIC CAR CHARGING STATION ROUGH IN AND MORE!

BASE PRICE STARTING  
AT **\$333,500**



MAIN FLOOR



2ND LEVEL



FARMHOUSE



TRADITIONAL



MODERN PRAIRIE

elevations



**TWO STORY**

- 2,357 SF
- 4 BEDROOMS
- 3 BATHROOMS
- 3 CAR GARAGE
- SPRINKLER SYSTEM/JAMES HARDIE SIDING

# the Quartz

**TAKE A TOUR**

**OPTIONAL ITEMS:**

- FINISHED BASEMENT
- GARAGE EXTENSIONS
- TALLER GARAGE DOORS
- SMART HOME TECHNOLOGIES
- 3 ELEVATIONS TO CHOOSE FROM
- UPGRADE SHELVING, ROUNDED CORNERS

BASE PRICE STARTING AT **\$ 340,500**



**MAIN FLOOR**



**2ND LEVEL**



**CRAFTSMAN**



**FARMHOUSE**



**MODERN PRAIRIE**

elevations

# the Ruby 4

**TAKE A TOUR**

## TWO STORY

- 2,428 SF
- 4 BEDROOMS
- 3 BATHROOMS
- 3 CAR GARAGE
- SPRINKLER SYSTEM/JAMES HARDIE SIDING

## OPTIONAL ITEMS:

- FINISHED BASEMENT
- GARAGE EXTENSIONS
- TALLER GARAGE DOORS
- SMART HOME TECHNOLOGIES
- 2 ELEVATIONS TO CHOOSE FROM
- INSULATED GARAGE, BAR ROUGH IN, COVERED PATIO/DECK AND MORE!

BASE PRICE STARTING  
AT **\$ 349,500**



**MAIN FLOOR**



**2ND LEVEL**



**MODERN PRAIRIE**



**TRADITIONAL**



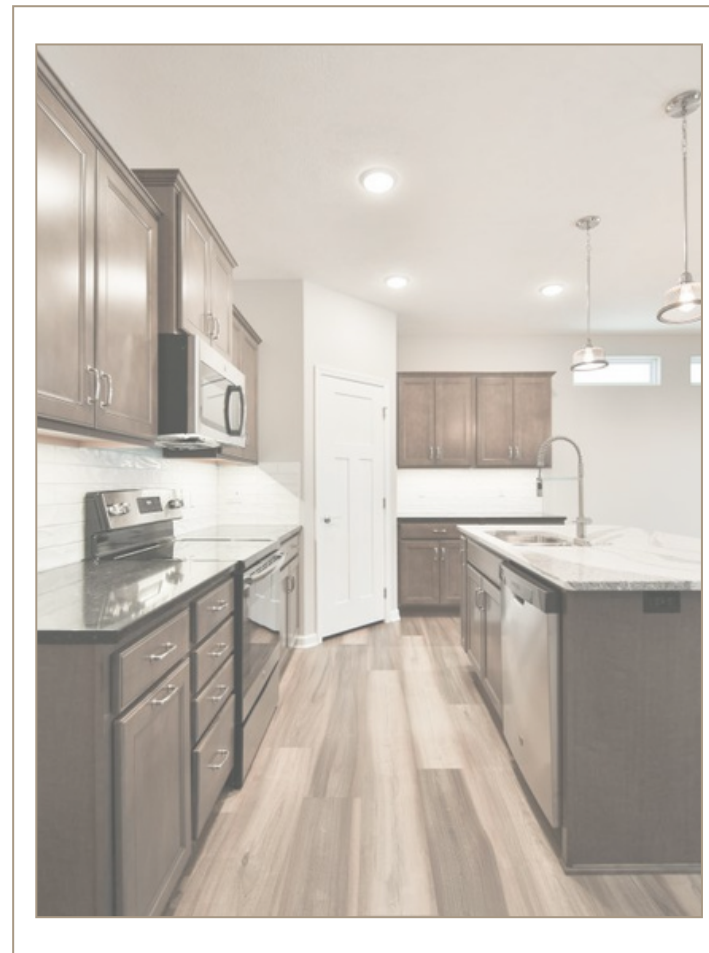
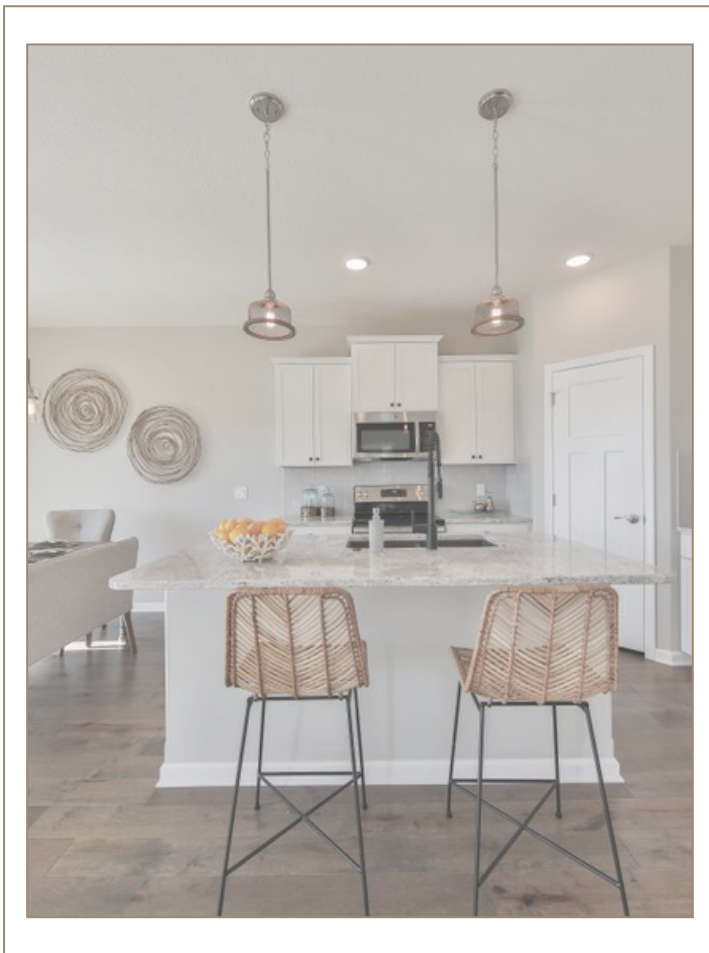
**FARMHOUSE**

**elevations**



# RANCH PLANS

RICHLAND  
HOMES





- ONE STORY
- 1,473 SF ON MAIN
- 3 BEDROOMS
- 2 BATHROOMS
- 3 STALL GARAGE
- SPRINKLER SYSTEM

# the Turquoise

**TAKE A TOUR**

- OPTIONAL - FINISHED BASEMENT WITH REC ROOM, BED, BATH
- GARAGE EXTENSIONS
- TALLER GARAGE DOORS
- SMART HOME TECHNOLOGIES
- 4 ELEVATIONS TO CHOOSE FROM
- UPGRADED LIGHTING PACKAGES, FLOORING, QUARTZ AND MORE!

BASE PRICE STARTING  
AT **\$ 303,500**



elevations

# the Blue Sapphire

**TAKE A TOUR**



- ONE STORY
- 1,529 SF ON MAIN
- 3 BEDROOMS
- 2 BATHROOMS
- 3 STALL GARAGE
- SPRINKLER SYSTEM

- OPTIONAL - FINISHED BASEMENT
- ADD TWO ADDITIONAL BEDROOMS AND ONE BATHROOM IN BASEMENT
- TALLER GARAGE DOORS
- GARAGE INSULATION
- ADDITIONAL EXTERIOR STONE OPTIONS

BASE PRICE STARTING  
AT **\$ 317,500**



**MODERN PRAIRIE**



**FARMHOUSE**



**CRAFTSMAN**

elevations



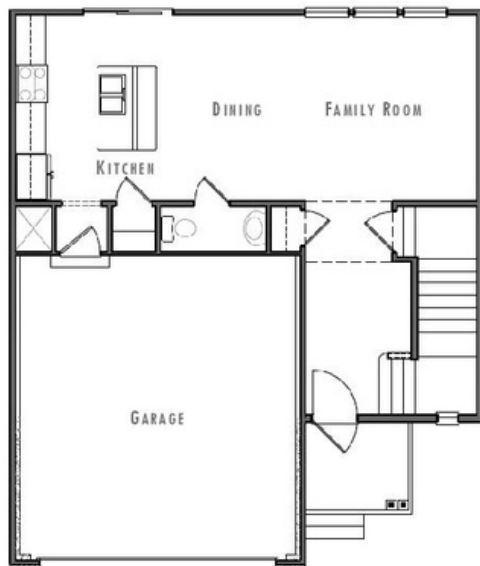
The ELEMENT  
COLLECTION by  
RICHLAND  
HOMES

# The Cobalt

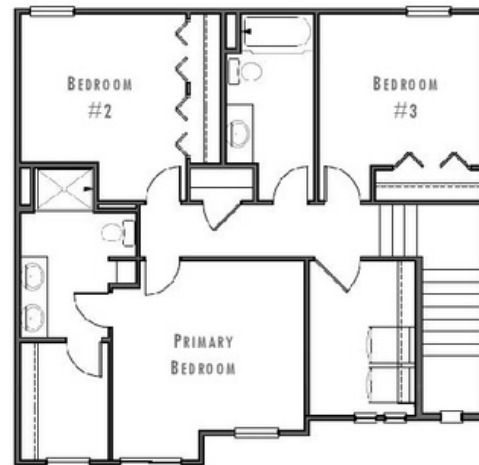


- 2 STORY
- 1552 SF ON MAIN
- 3 BEDROOMS
- 3 BATHROOMS
- 2 STALL GARAGE
- QUARTZ COUNTERTOPS, LVP ENTIRE MAIN LEVEL
- SPRINKLER SYSTEM/JAMES HARDIE SIDING
  
- OPTIONAL - FINISHED BASEMENT WITH REC ROOM, BED, BATH
- 7 CURATED DESIGN PACKAGES FOR INTERIOR AND 8 EXTERIOR COLOR PACKAGES
- FIREPLACE, TRASH ROLL OUT, DECK, COVERED PATIO AND MORE!

BASE PRICE STARTING  
AT **\$289,900**



MAIN FLOOR



2ND LEVEL



CRAFTSMAN



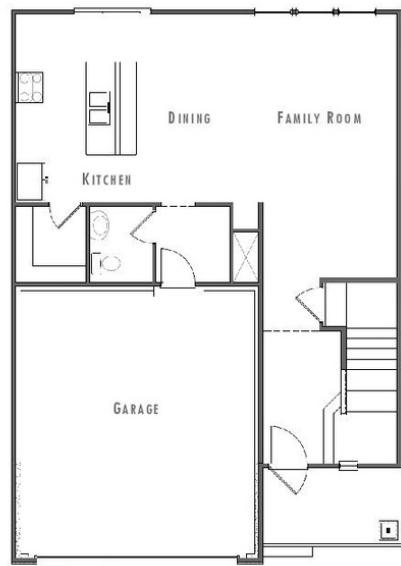
CLASSIC URBAN

elevations

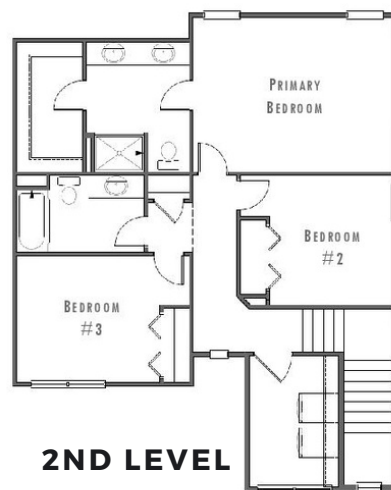
# The Granite

- 2 STORY
- 1783 SF ON MAIN
- 3 BEDROOMS
- 3 BATHROOMS
- 2 STALL GARAGE
- QUARTZ COUNTERTOPS, LVP ENTIRE MAIN LEVEL
- SPRINKLER SYSTEM/JAMES HARDIE SIDING
- OPTIONAL - FINISHED BASEMENT WITH REC ROOM, BED, BATH
- 7 CURATED DESIGN PACKAGES FOR INTERIOR AND 8 EXTERIOR COLOR PACKAGES
- FIREPLACE, TRASH ROLL OUT, DECK, COVERED PATIO AND MORE!

BASE PRICE STARTING  
AT **\$290,950**



MAIN FLOOR



2ND LEVEL



MODERN PRAIRIE

elevations



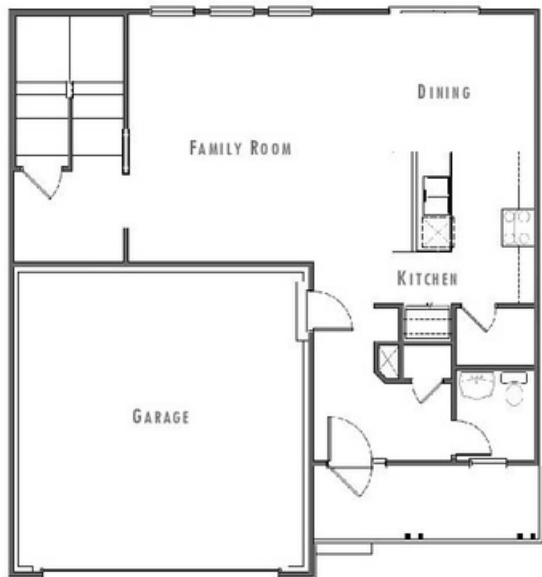
CLASSIC URBAN



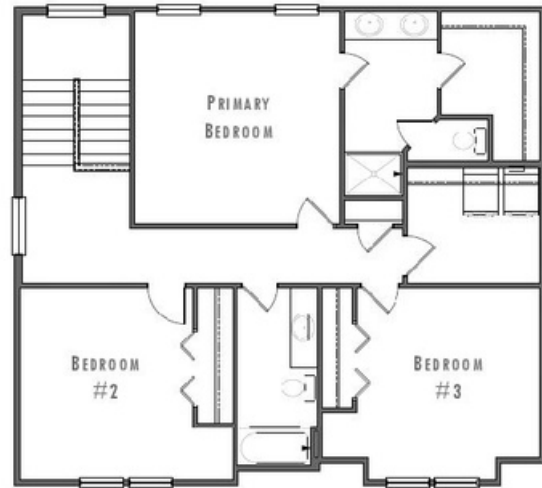
# The Slate

- 2 STORY
- 1897 SF ON MAIN
- 3 BEDROOMS
- 3 BATHROOMS
- 2 STALL GARAGE
- QUARTZ COUNTERTOPS, LVP ENTIRE MAIN LEVEL
- SPRINKLER SYSTEM/JAMES HARDIE SIDING
  
- OPTIONAL - FINISHED BASEMENT WITH REC ROOM, BED, BATH
- 7 CURATED DESIGN PACKAGES FOR INTERIOR AND 8 EXTERIOR COLOR PACKAGES
- FIREPLACE, TRASH ROLL OUT, DECK, COVERED PATIO AND MORE!

BASE PRICE STARTING  
AT **\$ 299,850**



MAIN FLOOR



2ND LEVEL



CRAFTSMAN



FARMHOUSE

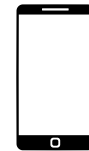
elevations

---

# Want to learn more Contact Heather or Shannon

or VISIT the MODELS at  
8605 N 177TH or 8601 N 176TH  
BENNINGTON

## Heather Chaney



**402.216.5705**

heather.chaney@betteromaha.com

## Shannon Bartling



**402.881.2572**

shannon.bartling@betteromaha.com

**Better  
Homes**  
and Gardens.  
REAL ESTATE

THE  
GOOD LIFE  
GROUP



REALTY GROUP