



**Better  
Homes**  
and Gardens.  
REAL ESTATE

THE  
GOOD LIFE  
GROUP



REALTY GROUP



Hi! I'm Jenn and I have a passion for new construction!

I am your real estate guru in the heart of Nebraska! With a passion for providing unparalleled representation and service to my clients, combined with a sharp understanding of new construction trends, I can be your ultimate guide to finding the perfect home sweet home.

As a licensed REALTOR with Better Homes & Gardens Real Estate The Good Life Group, I don't just sell houses; I create personalized experiences tailored to your dreams. Whether you're searching for a cozy cottage or a sleek modern abode, I will navigate the market with expertise and enthusiasm.

Love where you live? With me by your side, you'll not only find a house but a place to call your own. Let me turn your real estate journey into a seamless adventure filled with excitement and joy.

*Jenn Haeg*

**Better  
Homes  
and Gardens.**  
REAL ESTATE

THE  
GOOD LIFE  
GROUP



REALTY GROUP

# About Jenn

For over 13 years, I've had the pleasure of helping clients buy, sell, and build homes, and it's been especially rewarding representing Woodland Homes—a full custom builder with a variety of floor plans and available lots throughout the Omaha metro area. Guiding clients through the custom build process and helping them turn their dream homes into reality is what I love most. When you choose to build with me, here's what you can expect: First, whether you prefer to connect by text, phone, DM, or email, you'll always get me on the other end—every single time. Second, you can lean on my 13 years of experience in the Omaha metro market to make the building process smooth and enjoyable, giving you confidence in your decisions. Lastly, my commitment doesn't end at closing. I'll be here long after to help you navigate life in your new home, answer any questions, or even grab a cup of coffee. If you're ready to explore your options and start building with Woodland Homes, I'd be delighted to assist you!



**Jenn  
Haeg**



**402.885.3145**

Jenn.Haeg@betteromaha.com  
REALTOR®, HOMELIFE REALTY GROUP | BHGRE



THE  
GOOD LIFE  
GROUP



REALTY GROUP

# Why Woodland

At Woodland Homes, we take pride in designing and building homes that go beyond expectations, blending innovative design trends with exceptional craftsmanship and the highest quality materials. Our homes are thoughtfully crafted to reflect the way our clients want to live, ensuring comfort, style, and lasting value. Every detail is carefully considered, from the initial design phase to the final touches, creating a home that is as functional as it is beautiful. Our collaborative approach brings together builders, designers, and trade partners to create a seamless and enjoyable experience from start to finish. Jenn Haeg, our premier new construction agent with HomeLife Realty Group, expertly guides you through the building process, discussing timelines, design options, and costs to ensure your vision becomes reality. Whether you're buying, selling, or building, Jenn and the HomeLife team provide top-notch representation with your best interests at heart. Let Woodland Homes create a space where your life can thrive.



**Jenn  
Haeg**



**402.885.3145**

Jenn.Haeg@betteromaha.com  
REALTOR®, HOMELIFE REALTY GROUP | BHGRE

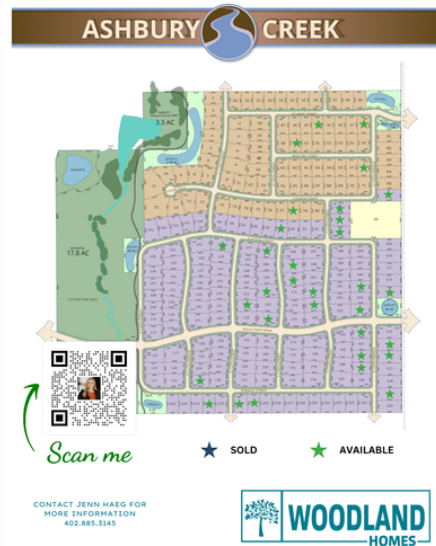


THE  
GOOD LIFE  
GROUP





# COMMUNITIES



**School District: Gretna School District**  
**Location: 1 Mile North of 192nd & Hwy 370**

Aspen Creek contains some of the area's best custom-built homes. Homes in Aspen Creek remain very desirable due to their location, design, and construction quality helping to make the subdivision a popular destination for people wanting to live in the Gretna area.

**School District: Papillion/La Vista**  
**Location: 114th & HWY 370**

Discover Ashbury Creek in Papillion, where outdoor adventure is just steps away! Enjoy easy access to Prairie Queen Recreation Area, Werner Park, Walnut Creek, and plenty of trails, fishing, and green spaces to explore.

**School District: Papillion/La Vista**  
**Location: 120th & Hwy 370**

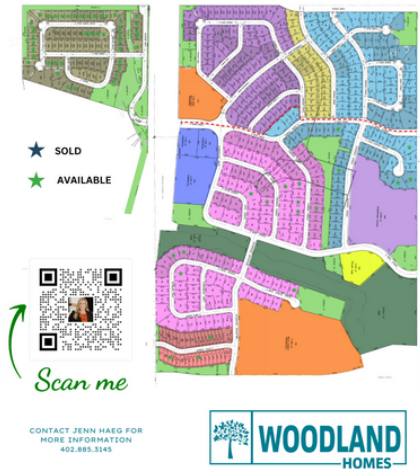
Ashbury Farm, located off Highway 370 & 120th Street in Papillion, offers estate lots in a picturesque neighborhood with tree-lined boulevards. Conveniently situated near Papillion South schools, it's just minutes from Shadow Lake Towne Center, dining, and entertainment options.

**School District: Papillion/La Vista**  
**Location: 108th & Lincoln Road**

With an inviting location and desirable home designs, the Granite Lake neighborhood offers some of the most exciting new construction homes in the region. The lake and trails make this a perfect home for those looking for recreational living.

# COMMUNITIES

## GRANITE CREEK



School District: Papillion La Vista  
Location: 102nd & Hwy 370

Granite Creek, Papillion's newest premier development at 102nd and Highway 370. Offering elevated lots with stunning views of downtown Omaha, the community features a mix of multi-family and commercial spaces. Enjoy tunnel access to Walnut Creek Lake, scenic trails, and nearby SumTur Amphitheater. Future amenities include a splash park, plus easy access to Papillion-La Vista Schools, dining, shopping, and highways.

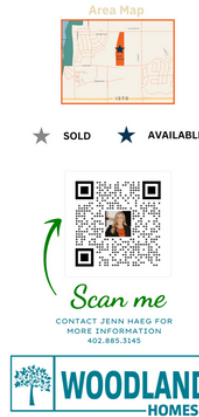
## KEMPTEN CREEK



School District: Bennington  
Location: 156th & Bennington Rd

Adjacent to the proposed NRD lake area  
Close to High School, Middle School, downtown Bennington, Bennington Fire Dept, Quick access to Splash Park, walking trail, Bennington Baseball complex, Flanagan Lake, and 50-acre Park.

## North Shore II



School District: Papillion/La Vista  
Location: HWY 370 & 126TH ST

North Shore 2, located in Papillion near 126th & Highway 370, offers a vibrant neighborhood with scenic lake views and easy access to recreation at Prairie Queen Lake. This desirable community is close to top-rated Papillion-La Vista schools, shopping, dining, and entertainment, making it a perfect blend of convenience and charm.

## THE COVE NORTH SHORE



School District: Papillion/La Vista  
Location: 126th and 370

The Cove is a gated villa community in Papillion, just west of Werner Park and near the scenic Prairie Queen recreation area. Perfect for building a Woodland Villa, this exclusive neighborhood offers low-maintenance living with lawn care and snow removal included. Enjoy easy access to walking trails, lake activities, and nearby dining, shopping, and entertainment.

# COMMUNITIES

## SHADOW LAKE 2 Phase 2



★ SOLD

★ AVAILABLE



Scan me

CONTACT JENN HAEG FOR  
MORE INFORMATION  
402.885.3145



## WESTBURY FARM



★ SOLD

★ AVAILABLE

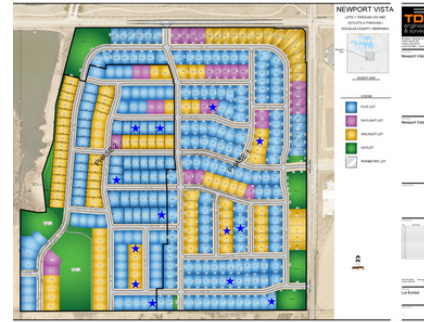


Scan me

CONTACT JENN HAEG FOR  
MORE INFORMATION  
402.885.3145



## Newport Vista



Scan me

CONTACT JENN HAEG FOR  
MORE INFORMATION  
402.885.3145



## Calarosa East/Vistancia



Scan me

CONTACT JENN HAEG FOR  
MORE INFORMATION  
402.885.3145



School District: Papillion/La Vista  
Location: 72ND & Capehart Rd

Shadow Lake 2 offers a desirable neighborhood with scenic views and easy access to Shadow Lake Towne Center, dining, shopping, and recreation, making it a perfect spot for comfortable and convenient living.

School District: Elkhorn  
Location: 214th & F Street

Westbury Farm is complete with luxury villas, hobby acreage home sites and single family homes. With the top-rated Elkhorn schools nearby, quick access to the West Dodge Expressway and nearly unlimited shopping and dining opportunities nearby, Westbury Farm is sure to become one of the most sought-after neighborhoods in the state.

School District: Bennington  
Location: North 168th Street and Bennington Road

Newport Vista is just two minutes away from Bennington Elementary, Middle, and High School—some of the top-ranked schools in Nebraska!

School District: Elkhorn  
Location: 244th & Fort Street

Calarosa/Vistancia is only minutes from the bustling Maple St corridor, offering convenient access to shopping, dining, and entertainment, including Village Pointe Shopping Center and Theater. Outdoor enthusiasts will love the proximity to local lakes and recreational areas.



# COMMUNITIES



School District: Elkhorn  
Location: 192ND & Fort

Daybreak Springs is a new neighborhood in Elkhorn, offering modern living close to top schools, shopping, and dining—perfect for building your dream home.



School District: Gretna  
Location: 192nd between Q and Harrison St

Falling Waters, nestled in the sought-after Gretna School District, boasts scenic tree-lined boulevards, beautiful fountains, and serene waterfalls. The neighborhood includes a community park, a seven-acre nature reserve, and roundabouts designed to enhance safety.

# Ranch Plans





# The Ashley

**VIRTUAL TOUR**

 4 Bed  3Bath  3Car  3,129 sqft

1,775 Sqft  
Main



1354 Sqft  
Lower Level



**Craftsman**



**Modern Prairie**

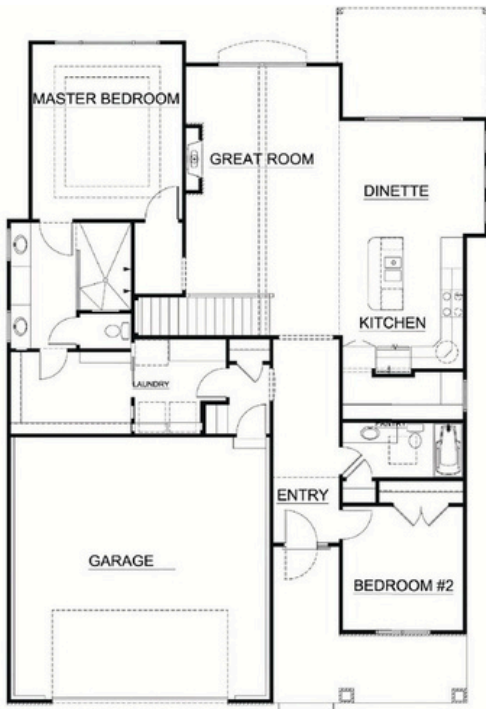




# Casa Bella

**VIRTUAL TOUR**

 4 Bed  3Bath  3Car  2,960 sqft



1,269 Sqft  
Lower Level

1,691 Sqft  
Main



Traditional



Craftsman



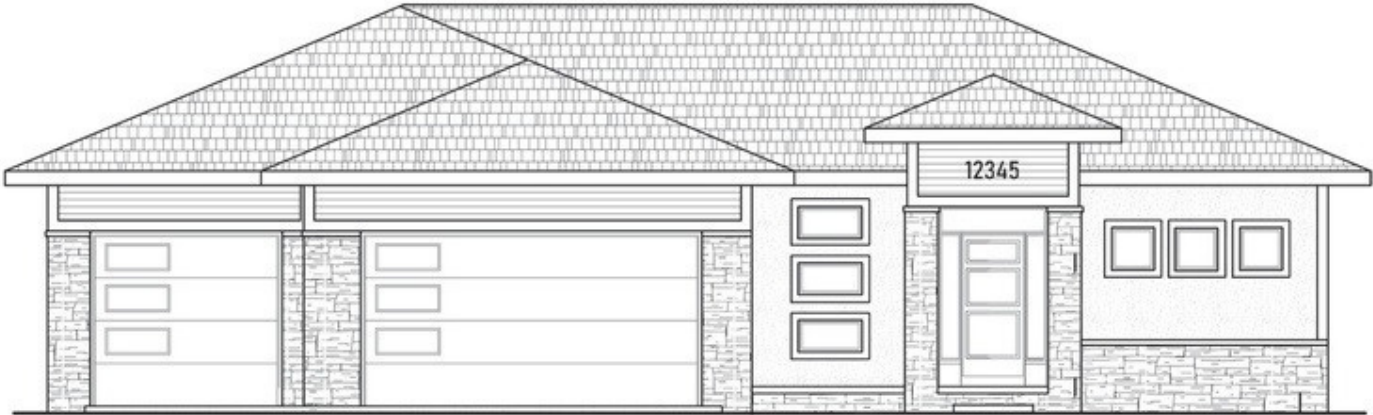
Mediterranean



# The Palermo

**VIRTUAL TOUR**

5 Bed 3 Bath 3Car 3,226 sqft



1,863  
Sqft  
Main

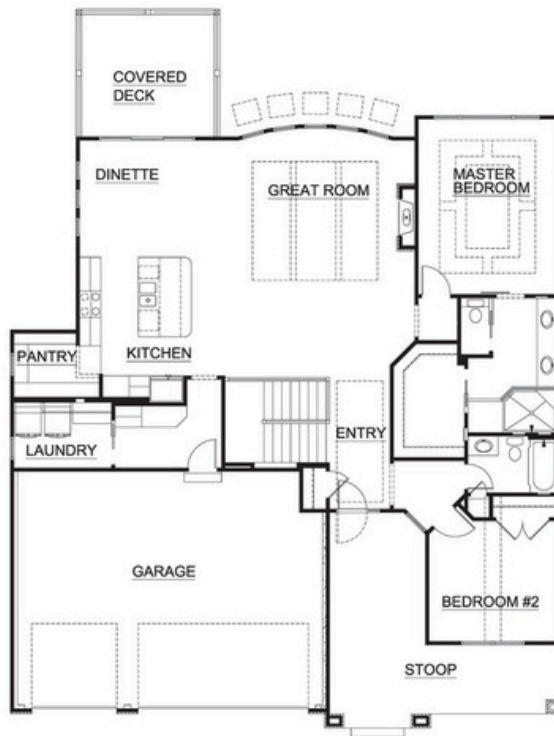


1,403 Sqft  
Optional  
Lower Level

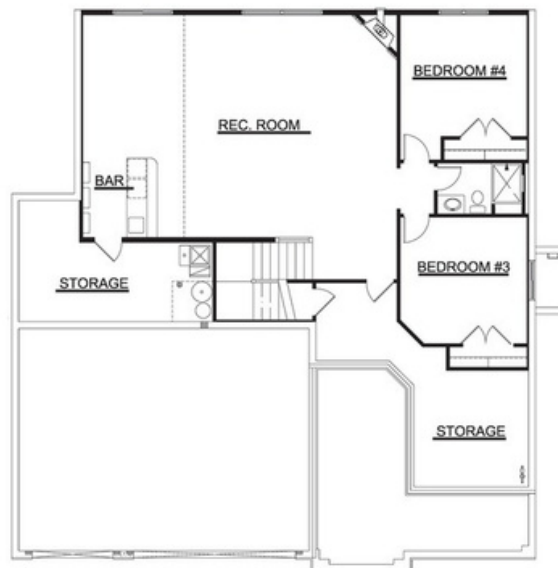


# The Williamsburg

 4 Bed  3 Bath  3 Car  3,022 sqft



1,809 Sqft  
Main



1,213 Sqft Optional  
Lower Level





# The Louden

**VIRTUAL TOUR**

 4 Bed  3Bath  3Car  3,486 sqft



1,962  
Sqft  
Main



Craftsman



1,524 Sqft  
Optional  
Lower Level



Mediterranean

# Two Story Plans





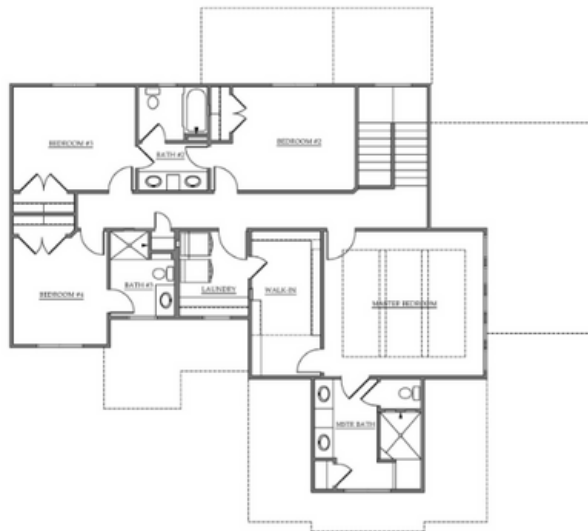
# The Calvin

**VIRTUAL TOUR**

 4 Bed  3Bath  3Car  2,627 sqft



Farmhouse







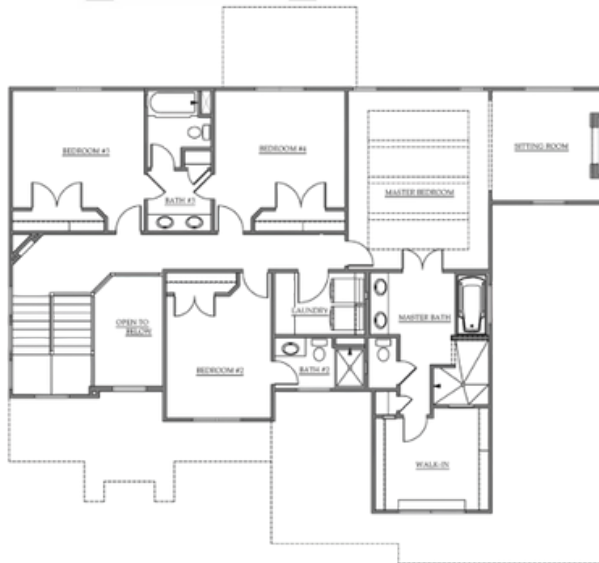
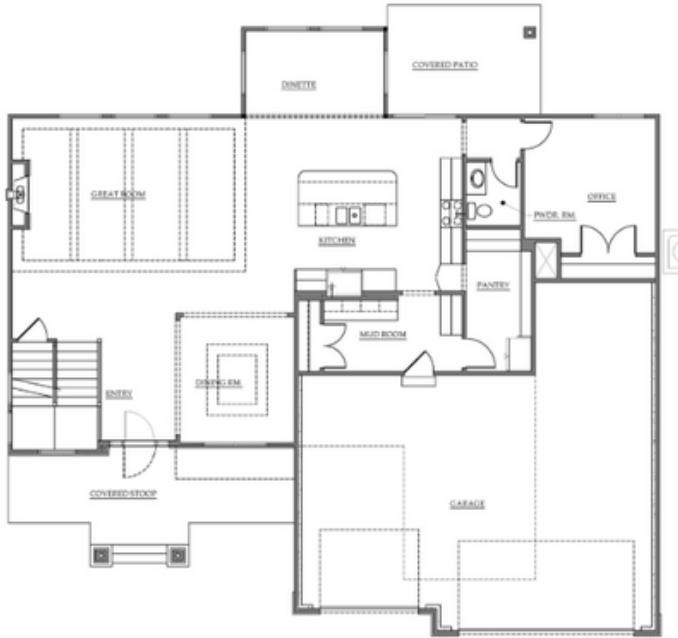
Modern



# The Cabernet II

VIRTUAL TOUR

 5 Bed
  4 Bath
  3Car
  3,106-3,150 sqft



Traditional



French Colonial



Craftsman



Mediterranean



Cape Cod



Concord



Contemporary



Country



# The Macee

VIRTUAL TOUR

4 Bed 4 Bath 3Car 2,750 sqft



Farmhouse



Craftsman



Mediterranean