

Build with Confidence! Quality, reliability and Innovation



MOUNTAIN CONSCHEM PVT. LTD.

Factory : Baijanath -05, Banke, Nepal

Tel.No. +977- 9763950597, 9802542043 Email: Info@mountainconschem.com

SUPER PLASTICIZER CONCRETE ADMIXTURES

CONCRETE AID

CURING COMPOUND

MOUNT READYMIX

INJECTION GROUTING



Please Scan
for more details

www.mountainconschem.com

MOUNTAIN - PCE

New Generation Slump Retaining Concrete Superplasticizer

Mountain PCE is a high performance (high strength and durability) super plasticizer for concrete based on a polycarboxylate ether polymer. It comprises of particles in the size range of 0.25 to 0.35 micrometers (μm) and is synthesized through nano-scale polymerization. It is a high range super plasticizer (water reduction up to 40% in control concrete) with superior cement dispersion ability to provide extremely high slump values, even to concrete mixtures made with water-to-cement ratio of less than 0.30.

Key Features

- Improved Workability
- Durability.
- Reduce Water Content.
- Enhanced Strength.
- Smooth Surface Finishing.
- Reduce Segregation And Bleeding.
- Cost Effectiveness.



(Available in : 5Kg., 15Kg., 55Kg., 75Kg. and 230 Kg Packing)

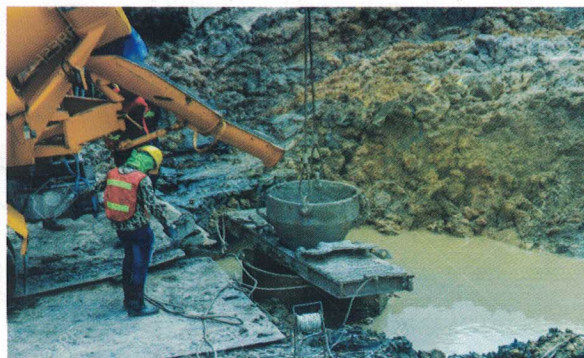
SPECIFICATIONS

PROPERTIES	MCC PC-2550	MCC PC-3050	MCC PC-3550
Appearance	Amber Colour Liquid	Amber Colour Liquid	Amber Colour Liquid
Base	Polycarboxylate Ethers	Polycarboxylate Ethers	Polycarboxylate Ethers
Standard	IS 9103:1999	IS 9103:1999	IS 9103:1999
Sp Gravity	1.060 \pm .02	1.065 \pm 0.02	1.070 \pm 0.02
ph	min. 6	min. 6	min. 6
Dry Content	18 \pm 1%	20 \pm 1%	25 \pm 1%
Dosage	0.4 to 1.2%	0.4 to 1.2%	0.4 to 1.2%

PROPERTIES	MCC PC-4050	MCC PC-5050	MCC PC-6050
Appearance	Amber Colour Liquid	Amber Colour Liquid	Amber Colour Liquid
Base	Polycarboxylate Ethers	Polycarboxylate Ethers I	Polycarboxylate Ethers
Standard	IS 9103:1999	IS 9103:1999	IS 9103:1999
Sp Gravity	1.080 \pm .02	1.085 \pm 0.02	1.090 \pm 0.02
ph	min. 6	min. 6	min. 6
Dry Content	27 \pm 1%	30 \pm 1%	32 \pm 1%
Dosage	0.3 to 1.0%	0.3 to 1.0%	0.2 to 0.8%



Anty Washout Agent

An anti-washout admixture (AWA) is a special chemical admixture used in concrete placed underwater to enhance its cohesiveness and viscosity, preventing segregation (separation of components) and washout (loss of cement and fines) due to water currents. By increasing the concrete's ability to bind together, AWAs improve the integrity, strength, and durability of underwater concrete structures, making them suitable for applications like dams, marine foundations, and deep foundations.



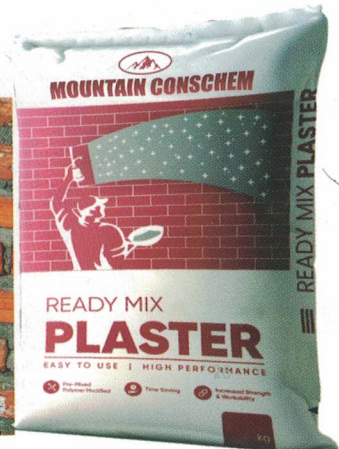
Product	Description/Advantage	Appearance	Components
Mount-Epoxy 2 Component (Liquid Form)	<ul style="list-style-type: none"> Resistance to Vibration & Shock. Ability to with stand Thermal Cycling. Fast cures at ambient temperatures. Gapfilling capability. Uniform stress distribution. Long-term durability. Easy application. 	Colorless viscous Liquid White Powder	Resin & Hardner + Filler
Mountcrete Cementitious Bonding Agent	<ul style="list-style-type: none"> Easy To Use Multipurpose & Economical Product Prevents Cracking & Water Resistance Reduces Drying & Aging Shrinkage Cracks Bond Strongly To old & New Concrete Used to Repair of Spalled Concrete Cost Effective 	Milky White Liquid Form	Cement+Chemical Admixture+ Polymers+Fine Fillers
MOUNTAIN SILICA	<ul style="list-style-type: none"> Increases Compressive Strength Improves Flexural & Tensile Strength. Increases Abrasion Resistance Higher Resistance To Water, Chemicals & Chloride Improves Cohesion (Reduces Bleeding and Segregation) Reduces Alkali-Silica Reaction (ASR). Improves bond between steel Reinforcement and Concrete. 	Grey to Dark Grey In Powder Form	Silicon Dioxide(SiO ₂)+ Pozzolanic Materials
MCOFINE	<ul style="list-style-type: none"> Improves durability parameters of concrete by refined pore structure, reduces permeability. Improves the resistance of concrete to aggressive environment conditions. Maintains the pH of the concrete to Protect steel reinforcement. Improves pump ability of concrete. Enhanced slump and extended slump retention without increasing the dosage of expensive chemical admixtures Faster removal of shuttering, quick rotation of forms in precast industry. Enhanced rate of strength gain in concrete mixes. 	Grey Powder Form	Low calcium silicate mineral based adhesive

CURING COMPOUND

Product	Description/Advantage	
MOUNTCURE White Pigmented Liquid (Acrylic Resin Based)	<ul style="list-style-type: none"> Allowing the concrete to retain sufficient water for curing without disturbing the normal setting action. Forms a thin barrier, allowing the concrete to retain sufficient water for curing. Eliminating the need for keeping the concrete continuously wet. Reflects the light and heat and minimizes the loss of moisture. Reduces the early age cracking and drying shrinkage. 	
MOUNTCURE Aluminised Liquid (Synthetic Resin Based)	<ul style="list-style-type: none"> Light reflectance. Provides improved curing of concrete that enhances cement hydration and also provide more durable concrete. Reduces permeability. Produces a hard-wearing and dust free surface that minimizes potential for surface cracking and shrinkage. Contains leafing aluminium to minimize solar temperature gain. 	

Ready Mix Plaster Advantages:

- Easy to use
- Faster application
- Easy to store
- Consistent Quality
- High performance
- Efficient Workability
- Higher compressive strength
- Premium finishing



BLOCK JOINT MORTAR

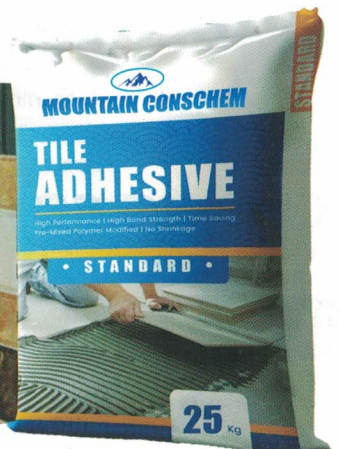
Advantages:

- High Performance
- High Bond
- Zero Wastage
- NO Curing
- Premixed Polymer Modified
- Aesthetic Finish

TILE ADHESIVE

Advantages:

- High adhesive bond strength
- Non-Shrink
- High sage resistance
- Economical and time-saving
- Improved coverage
- No shrinkage cracks
- High Flexibility
- Premium finish



Mount Dry RMC

Advantages:

- High Performance
- Consistency & Quality Control
- Time-Saving Cost-Efficient
- Reduced Wastage
- Versatile Applications
- Improved Workability
- Weather-Resistant Storage