

4

3

2

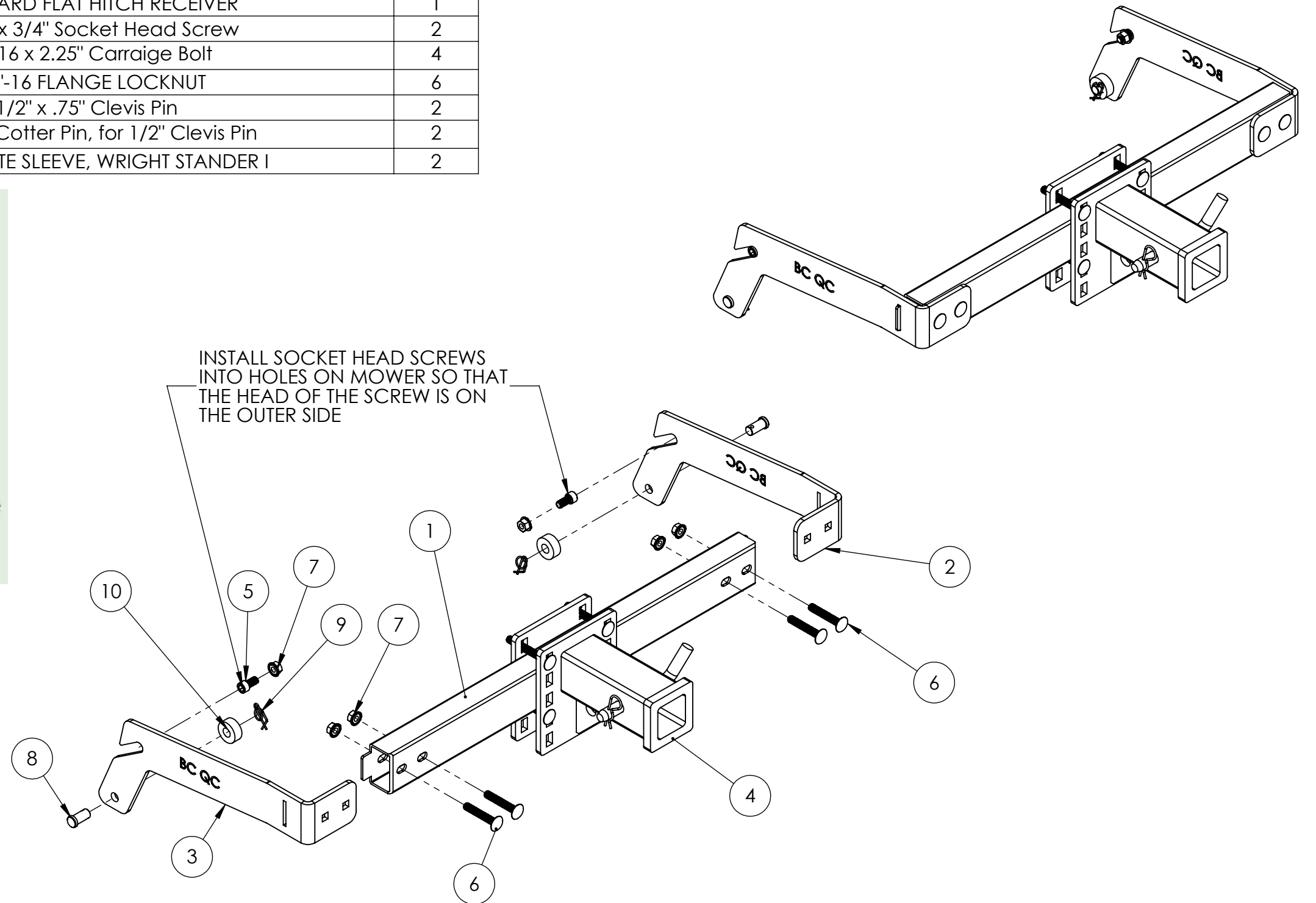
1

ITEM NO.	PART NUMBER	DESCRIPTION	QTY.
1	M09-10589	Hitch Mate Bobcat Quick Cat 48/52/60 Rect Tube	1
2	M09-10587	HITCH MATE SIDE SUPPORT, BOBCAT, QUICKCAT 48/52/60	1
3	M09-10588	HITCH MATE SIDE SUPPORT, BOBCAT, QUICKCAT 48/52/60	1
4	HM-FLT-UNV	STANDARD FLAT HITCH RECEIVER	1
5	H09-10226	3/8-16 x 3/4" Socket Head Screw	2
6	H09-10215	3/8-16 x 2.25" Carraige Bolt	4
7	H09-10008	3/8"-16 FLANGE LOCKNUT	6
8	H09-10047	1/2" x .75" Clevis Pin	2
9	H09-10048	Locking Cotter Pin, for 1/2" Clevis Pin	2
10	M09-10498	HITCH MATE SLEEVE, WRIGHT STANDER I	2

REVISIONS				
ZONE	REV.	DESCRIPTION	DATE	NAME
	A	ORIGINAL RELEASE	1/21/2021	JL



INSTALL SOCKET HEAD SCREWS INTO HOLES ON MOWER SO THAT THE HEAD OF THE SCREW IS ON THE OUTER SIDE



DO NOT SCALE DRAWING

PROPRIETARY AND CONFIDENTIAL

THE INFORMATION CONTAINED IN THIS DRAWING IS THE SOLE PROPERTY OF DAWSON MANUFACTURING. ANY REPRODUCTION IN PART OR AS A WHOLE WITHOUT THE WRITTEN PERMISSION OF DAWSON MANUFACTURING IS PROHIBITED.

DIMENSIONS ARE IN INCHES

TOLERANCES:

ANGULAR: MACH ± 0.5 BEND ± 1

ONE PLACE DECIMAL ± .050

TWO PLACE DECIMAL ± .025

THREE PLACE DECIMAL ± .005

3RD ANGLE PROJECTION

MATERIAL SEE BOM

FINISH

TITLE:

HITCH MATE BOTCAT
QUICK CAT 48" 52" 60"
REAR

PATENT PENDING

SIZE	PART NO.	REV
B	HM-BOB-QC-485260-R	A

SCALE: 1:6 WEIGHT: 26.08 lbs SHEET 1 OF 1

4

3

2

1