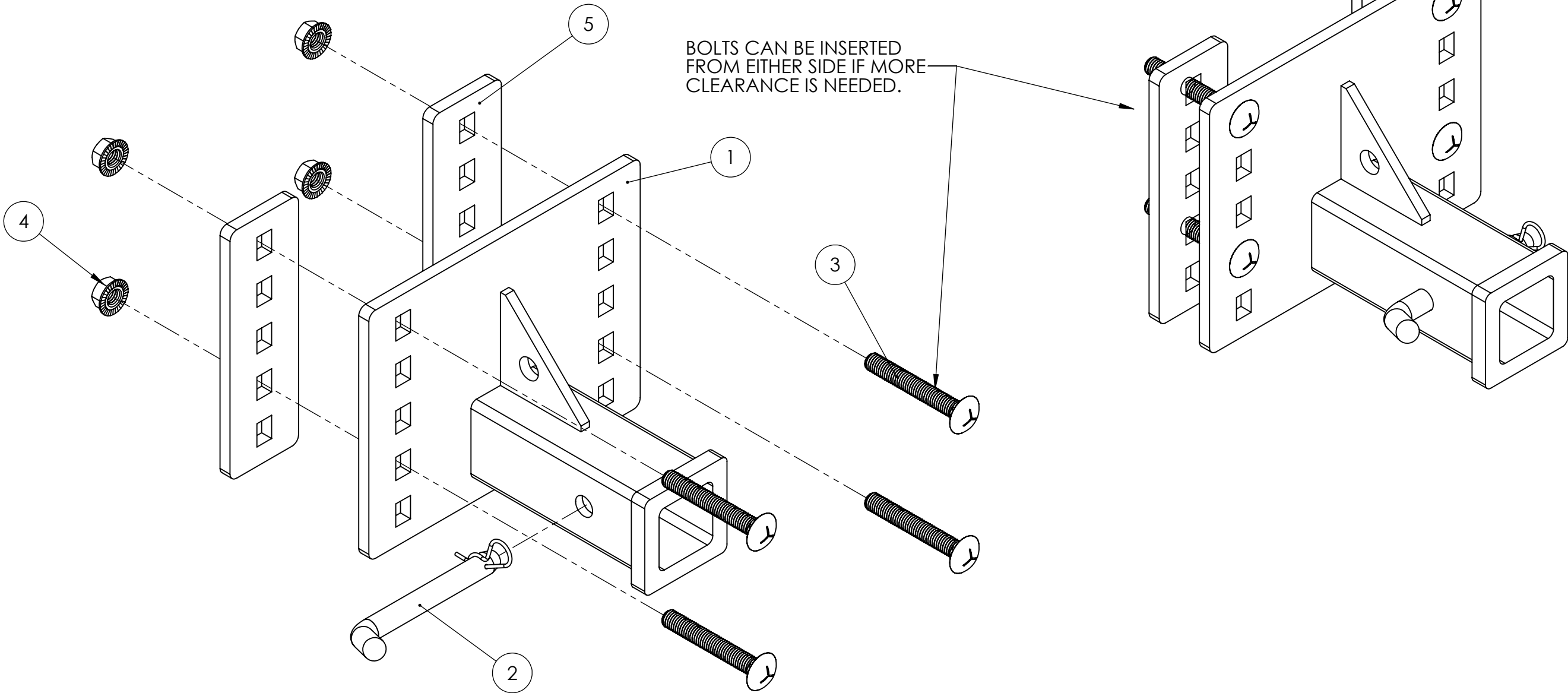


4				3				2				1						
ITEM NO.	PART NUMBER	DESCRIPTION	QTY.											REVISIONS				
														ZONE	REV.	DESCRIPTION	DATE	APPROVED
1	A09-10171	WELDED ASSEMBLY	1															
2	P09-10162	5/8" HITCH PIN AND COTTER PIN	1												A	ORIGINAL RELEASE	11/17/2022	JL
3	H09-10245	1/2-13 x 3.5" Carriage Bolt	4															
4	H09-10029	1/2-13 FLANGE NUT	4															
5	M09-10908	HITCH MATE FLAT LARGE UNIVERSAL CLAMP PLATE	2															



B

A



B

A



DO NOT SCALE DRAWING		DIMENSIONS ARE IN INCHES TOLERANCES: ANGULAR: MACH ± 0.5 BEND ± 1 ONE PLACE DECIMAL ± .050 TWO PLACE DECIMAL ± .025 THREE PLACE DECIMAL ± .005		3RD ANGLE PROJECTION	TITLE:  HITCH MATE, FLAT, LARGE, UNIVERSAL	PATENT PENDING		
PROPRIETARY AND CONFIDENTIAL <small>THE INFORMATION CONTAINED IN THIS DRAWING IS THE SOLE PROPERTY OF DAWSON MANUFACTURING. ANY REPRODUCTION IN PART OR AS A WHOLE WITHOUT THE WRITTEN PERMISSION OF DAWSON MANUFACTURING IS PROHIBITED.</small>		MATERIAL SEE BOM		FINISH		SIZE B	PART NO. HM-FLT-LG-UNV	REV A
						SCALE: 1:3	WEIGHT: 18.65 lbs	SHEET 1 OF 1

4

3

2

1