

4

3

2

1

ITEM NO.	PART NUMBER	DESCRIPTION	QTY.
1	A09-10121	HITCH MATE GRAVELY PRO STANCE 32/36, WELDED ASSEMBLY	1
2	P09-10162	5/8" HITCH PIN AND COTTER PIN	1
3	H09-10167	3/8-16 X 1IN HEX HEAD FLANGE BOLT	4
4	H09-10008	3/8"-16 FLANGE LOCKNUT	4

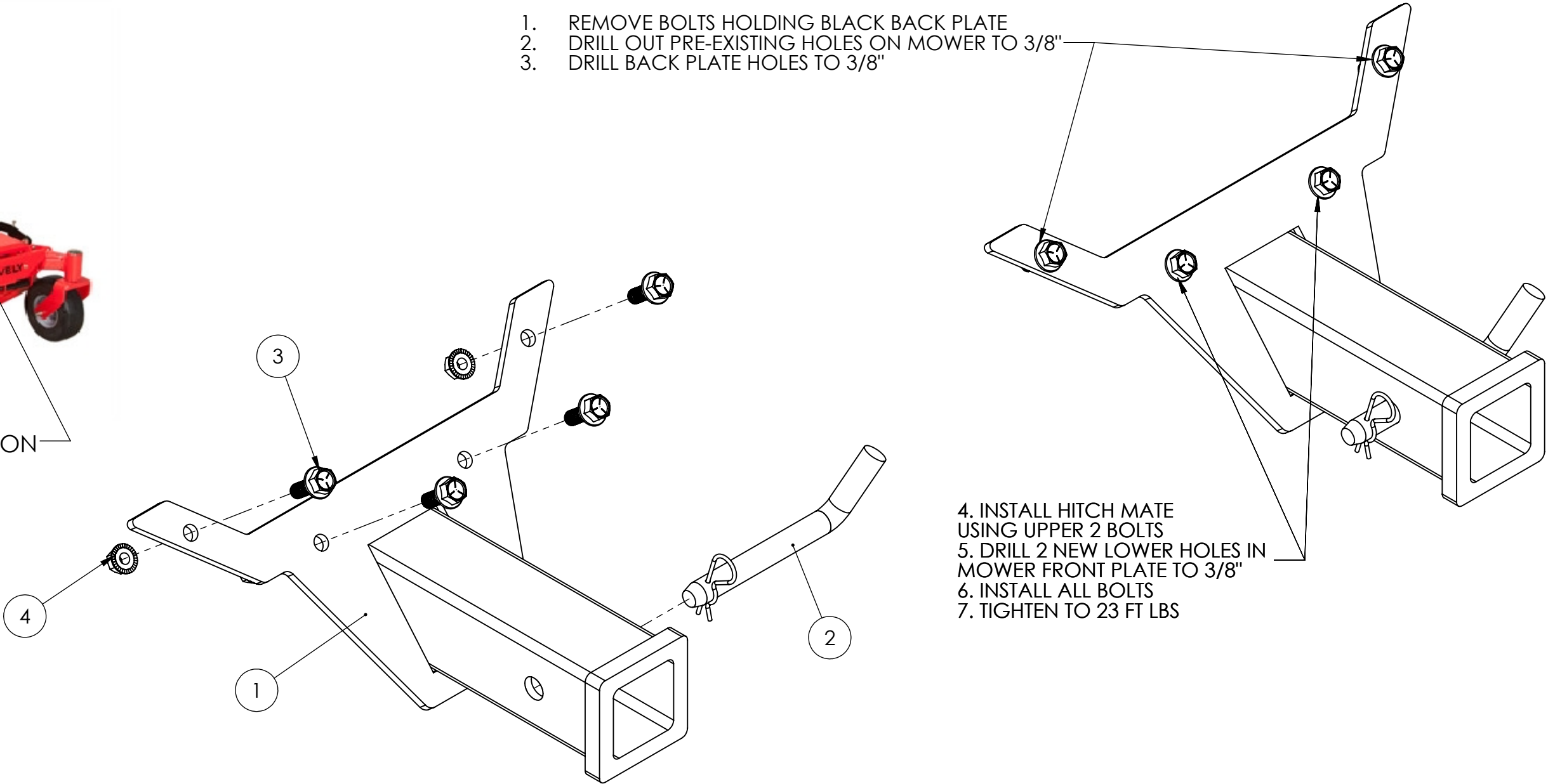
REVISIONS				
ZONE	REV.	DESCRIPTION	DATE	NAME
	A	ORIGINAL RELEASE	12/7/2020	JL

B



MOUNTING LOCATION

1. REMOVE BOLTS HOLDING BLACK BACK PLATE
2. DRILL OUT PRE-EXISTING HOLES ON MOWER TO 3/8"
3. DRILL BACK PLATE HOLES TO 3/8"



4. INSTALL HITCH MATE USING UPPER 2 BOLTS
5. DRILL 2 NEW LOWER HOLES IN MOWER FRONT PLATE TO 3/8"
6. INSTALL ALL BOLTS
7. TIGHTEN TO 23 FT LBS

A

A



DO NOT SCALE DRAWING		DIMENSIONS ARE IN INCHES TOLERANCES: ANGULAR: MACH ± 0.5 BEND ± 1 ONE PLACE DECIMAL ± .050 TWO PLACE DECIMAL ± .025 THREE PLACE DECIMAL ± .005	3RD ANGLE PROJECTION		TITLE: HITCH MATE GRAVELY PRO STANCE 32/36 FRONT, WELDED ASSEMBLY	PATENT PENDING				
PROPRIETARY AND CONFIDENTIAL			MATERIAL			SEE BOM	FINISH	SIZE B	PART NO. HM-GRV-PRST-3236-F	REV A
THE INFORMATION CONTAINED IN THIS DRAWING IS THE SOLE PROPERTY OF DAWSON MANUFACTURING. ANY REPRODUCTION IN PART OR AS A WHOLE WITHOUT THE WRITTEN PERMISSION OF DAWSON MANUFACTURING IS PROHIBITED.						SCALE: 1:3	WEIGHT: 8.05 lbs	SHEET 1 OF 1		

4

3

2

1