

4

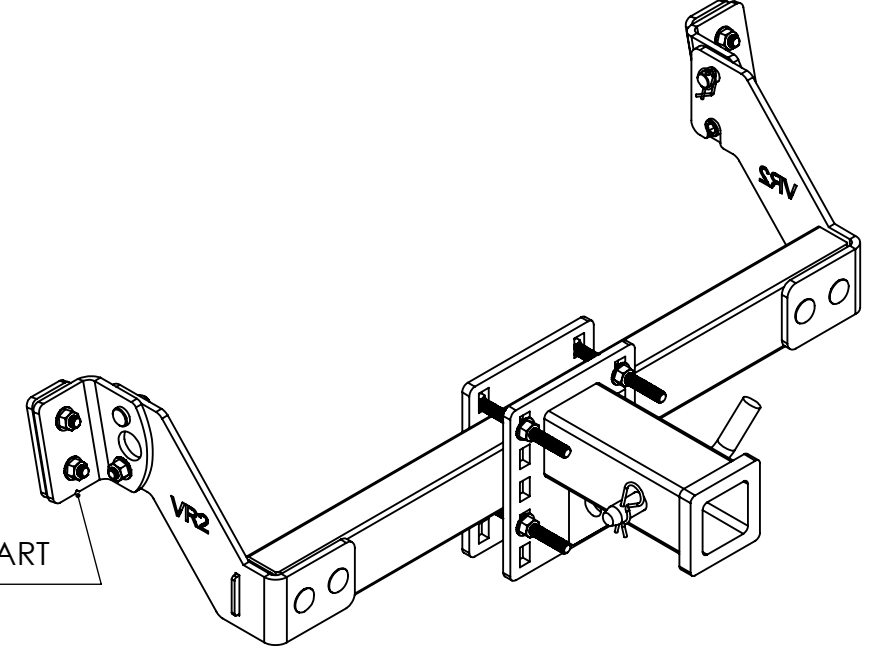
3

2

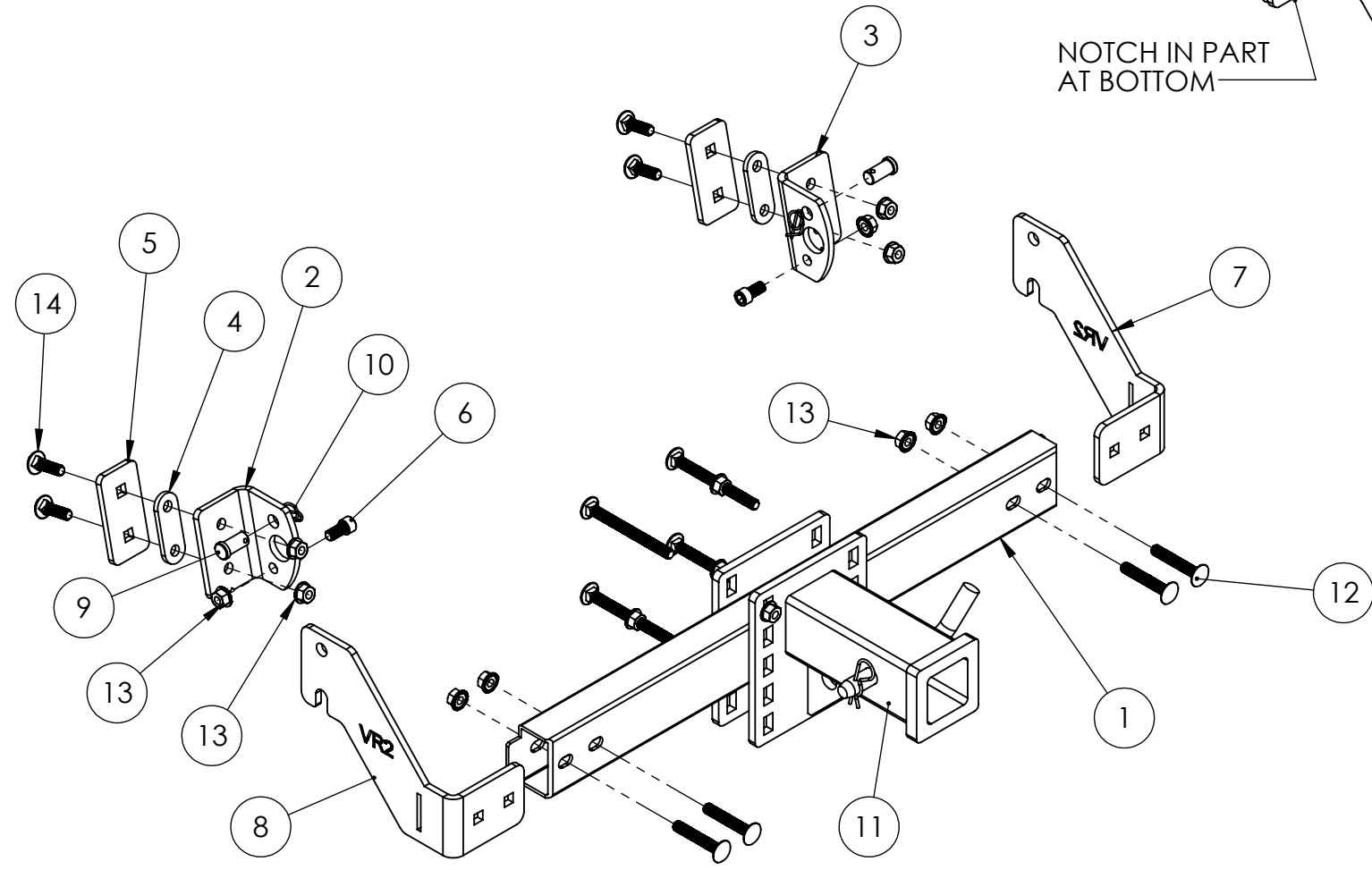
1

ITEM NO.	PART NUMBER	DESCRIPTION	QTY.
1	M09-10576	Hitch Mate ZR2 Rear, Rect Tube	1
2	M09-10573	HITCH MATE VR2 REAR LEFT MOUNT PLATE	1
3	M09-10572	HITCH MATE VR2 REAR RIGHT MOUNT PLATE	1
4	M09-10574	HITCH MATE VR2 REAR, OVAL SPACER	2
5	M09-10575	HITCH MATE VR2 REAR, BACK PLATE	2
6	H09-10226	3/8-16 x 3/4" Socket Head Screw	2
7	M09-10577	HITCH MATE VR2 REAR, RIGHT SIDE BRACKET	1
8	M09-10578	HITCH MATE VR2 REAR, LEFT SIDE BRACKET	1
9	H09-10047	1/2" x .75" Clevis Pin	2
10	H09-10048	Locking Cotter Pin, for 1/2" Clevis Pin	2
11	HM-FLT-UNV	STANDARD FLAT HITCH RECEIVER	1
12	H09-10215	3/8-16 x 2.25" Carriage Bolt	4
13	H09-10008	3/8"-16 FLANGE LOCKNUT	10
14	H09-10010	3/8-16 x 1.25in, Carriage Bolt	4

REVISIONS				
ZONE	REV.	DESCRIPTION	DATE	NAME
	A	ORIGINAL RELEASE	1/21/2021	JL



NOTCH IN PART AT BOTTOM



HITCH MATE MOUNT LOCATION



DO NOT SCALE DRAWING
 PROPRIETARY AND CONFIDENTIAL
 THE INFORMATION CONTAINED IN THIS DRAWING IS THE SOLE PROPERTY OF DAWSON MANUFACTURING. ANY REPRODUCTION IN PART OR AS A WHOLE WITHOUT THE WRITTEN PERMISSION OF DAWSON MANUFACTURING IS PROHIBITED.

DIMENSIONS ARE IN INCHES
 TOLERANCES:
 ANGULAR: MACH ± 0.5 BEND ± 1
 ONE PLACE DECIMAL ± .050
 TWO PLACE DECIMAL ± .025
 THREE PLACE DECIMAL ± .005

3RD ANGLE PROJECTION
 MATERIAL: SEE BOM
 FINISH:

TITLE:
HITCH MATE SCAGE V RIDE 2 48/52/61 REAR

PATENT PENDING		
SIZE	PART NO.	REV
B	HM-SCAG-VR2-485162-R	A
SCALE: 1:6	WEIGHT: 25.83 lbs	SHEET 1 OF 1

4

3

2

1

B

B

A

A