

4

3

2

1

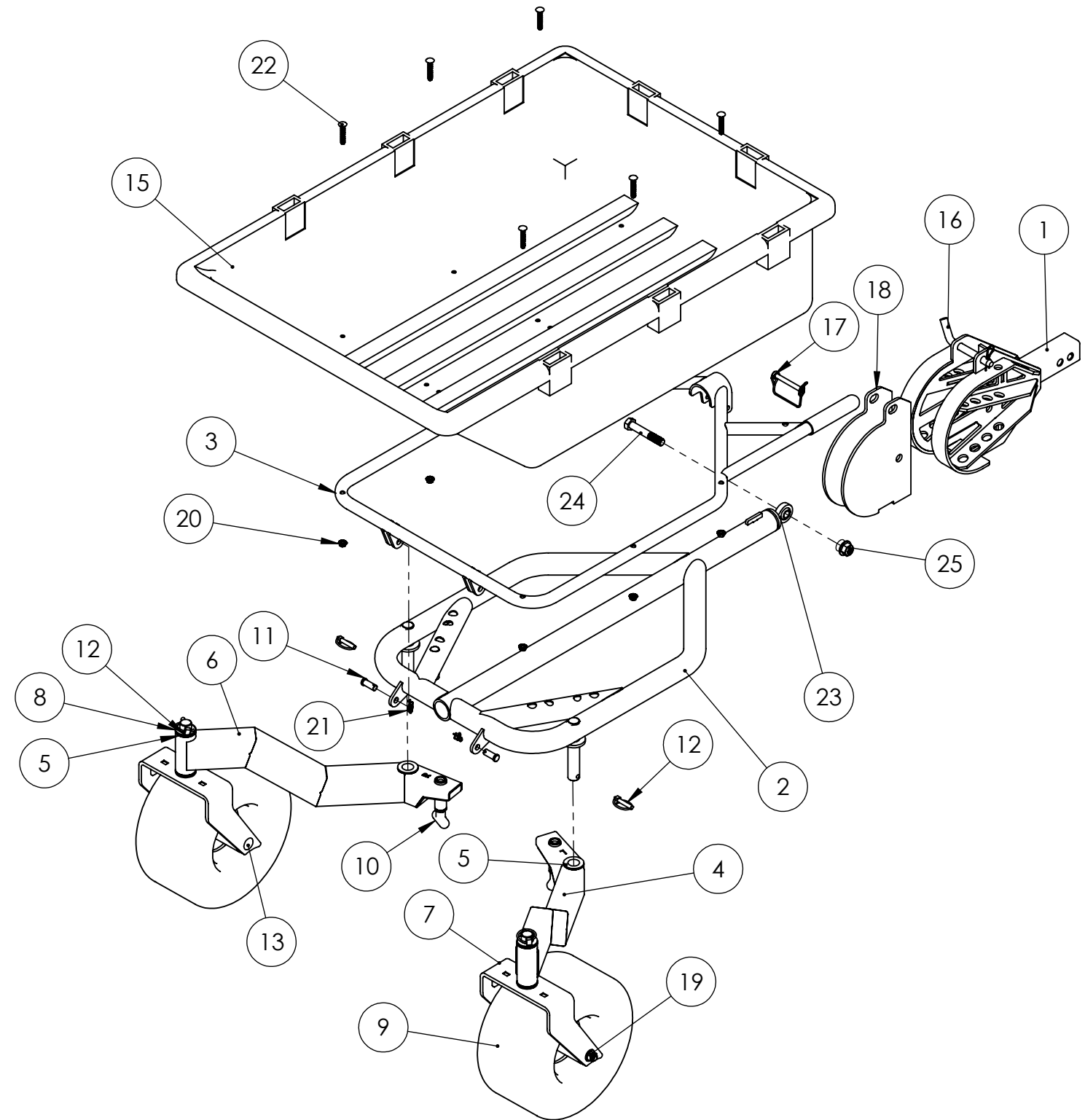
ITEM NO.	PART NUMBER	DESCRIPTION	QTY.
1	A09-10073	Kart Mate Welded Knuckle Assembly	1
2	A09-10072	KART MATE WELDED MAIN FRAME	1
3	A09-10071	KART MATE WELDED TUB FRAME	1
4	A09-10069	Kart Mate Welded Leg Assembly - Left	1
5	H09-10055	1" SHAFT BUSHING	8
6	A09-10068	Kart Mate Welded Leg Assembly - Right	1
7	A09-10070	KART MATE WELDED CASTER ASSEMBLY	2
8	M09-10347	Kart Mate UHMW Washer	4
9	P09-10133	WHEEL	2
10	P09-10135-B	LATCH PULL PIN	2
11	H09-10165	CLEVIS PIN	2
12	P09-10138	LINCH PIN	4
13	H09-10166	1/2-13 x 9IN CARRIAGE BOLT	2
14	P09-10137	CUSHION GRIP	2
15	P09-10136	TUB	1
16	P09-10087	5/8 x 4" HITCH PIN WITH COTTER	1
17	P09-10139	3/8 x 3" long pin with wire lock	1
18	M09-10342	KART MATE KNUCKLE UHMW SPACER	2
19	H09-10128	1/2-13 Nylon Flanged Locknut	2
20	H09-10005	5/16" FLANGE LOCKNUT	6
21	H09-10048	Locking Cotter Pin, for 1/2" Clevis Pin	2
22	H09-10177	5/16-18 x 2in, Carriage Bolt	6
23	H09-10238	3/4-16 RH Thread, Ball Joint Rod End	1
24	H09-10239	5/8-11 x 3.75" Hex Head Bolt, Grade 5, Zinc	1
25	H09-10106	5/8-11 Nylon Locknut, Grade 8, Zinc Yellow	1

HARDWARE BAG:

5/16-18 x 2" Carriage Bolt - x6
 5/16-18 Flange Nut - x6
 3/4-16 Ball Joint Rod End - x1
 5/8-11 x 3.75" Hex Bolt - x1
 5/8-11 Flange Nut - x1

TOOLS NEEDED:

1/2 inch socket
 15/16 inch socket
 15/16 inch wrench
 Rubber mallet



For hitch attachment go to
www.mulchmateusa.com
www.powerequipmentdealer.com



DO NOT SCALE DRAWING	DIMENSIONS ARE IN INCHES TOLERANCES: ANGULAR: MACH ± 0.5 BEND ± 1 ONE PLACE DECIMAL ± .050 TWO PLACE DECIMAL ± .025 THREE PLACE DECIMAL ± .005	3RD ANGLE PROJECTION	TITLE: KART MATE ASSEMBLY	PATENT PENDING	
PROPRIETARY AND CONFIDENTIAL THE INFORMATION CONTAINED IN THIS DRAWING IS THE SOLE PROPERTY OF DAWSON MANUFACTURING. ANY REPRODUCTION IN PART OR AS A WHOLE WITHOUT THE WRITTEN PERMISSION OF DAWSON MANUFACTURING IS PROHIBITED.	MATERIAL SEE BOM	FINISH	SIZE B	PART NO.	REV B
			SCALE: 1:12	WEIGHT: 145 lbs	SHEET 1 OF 2

4

3

2

1

4

3

2

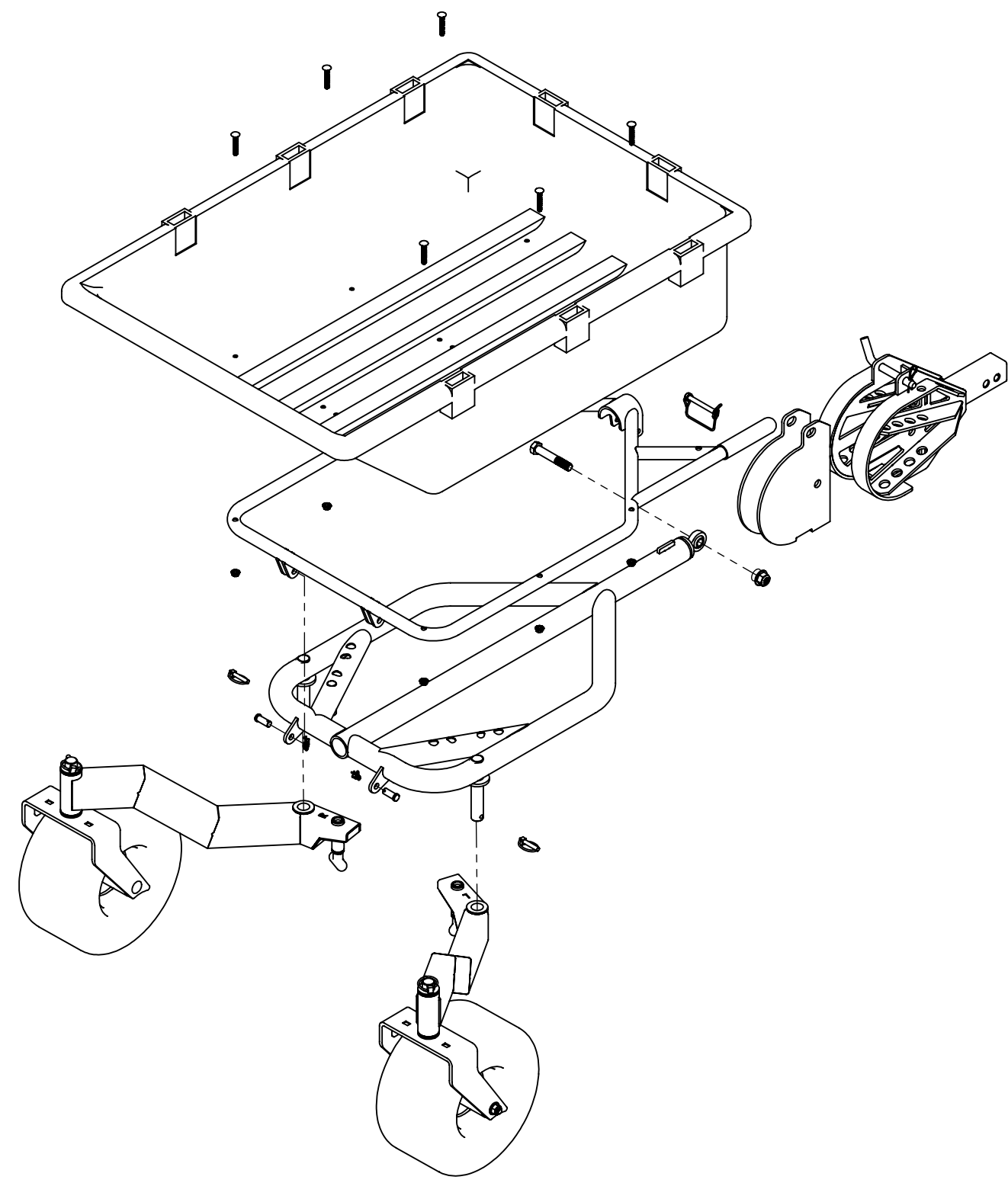
1

B

B

A

A



DO NOT SCALE DRAWING		DIMENSIONS ARE IN INCHES TOLERANCES: ANGULAR: MACH ± 0.5 BEND ± 1 ONE PLACE DECIMAL ± .050 TWO PLACE DECIMAL ± .025 THREE PLACE DECIMAL ± .005		3RD ANGLE PROJECTION	TITLE: KART MATE ASSEMBLY	PATENT PENDING		
PROPRIETARY AND CONFIDENTIAL THE INFORMATION CONTAINED IN THIS DRAWING IS THE SOLE PROPERTY OF DAWSON MANUFACTURING. ANY REPRODUCTION IN PART OR AS A WHOLE WITHOUT THE WRITTEN PERMISSION OF DAWSON MANUFACTURING IS PROHIBITED.		MATERIAL SEE BOM		FINISH		SIZE B	PART NO.	REV B
SCALE: 1:12 WEIGHT: 145 lbs						SHEET 2 OF 2		

4

3

2

1