



Hansteel

JAW CRUSHERS



EC1200 x 1000 JAW CRUSHER

Hansteel Industries Co. Ltd.

Rm. 819-821

Tongye Building,
32 Tieling Rd.

Shanghai China 200092

T: +86-21-65022290

E: john@hansteel.net

F: +86-21-65793287

Hansteel Industries Australia Pty. Ltd.

P O Box 65,

Stoneville

Western Australia 6081

T: +61 (0) 8 9295 5548

E: admin@hansteel.com.au

F: +61 (0) 8 9295 5547

THE RANGE OF HANSTEEL JAW CRUSHERS

MAIN FRAME

Rigid steel plate fabrication with heavy web reinforcement. Top caps for side bearings are removed to allow the shaft/jaw stock assembly to be lifted out complete. Groove block seating and side bearing bores machined for accurate alignment

BEARINGS

Self-aligning spherical roller bearings with grease lubrication and grease-filled dust seals

TOGGLE PLATE

Cast iron plate with hardened faces. Replaceable wear-resisting manganese steel seating strips with dust cover

JAW PLATES

Replaceable wear-resisting manganese steel castings each with toothed face. Jaws inverted for maximum life

SIDE LINERS

Sectional, replaceable manganese steel

FLYWHEELS

Interchangeable flywheels, vee belt drive

ECCENTRIC SHAFT

Fully machined high quality steel shaft

JAW STOCK

Strong deeply webbed steel jaw stock. Machined bore & toggle seating's

MODEL	Inlet (mm)	MAX. FEED SIZE (MM)	ADJUSTMENT RANGE OF DISCHARGE OPENING (MM)	PRODUCTION CAPACITY (T/H)	SPINDLE SPEED (r/min)	MOTOR POWER (KW)	WEIGHT WITHOUT MOTOR (T)
EC150X750	150X750	120	10-40	5-16	320	15	3.2
EC250X750	250X750	210	25-60	8-22	330	22	4.7
EC250X1000	250X1000	210	25-60	10-32	330	30-37	6.3
EC250X1200	250X1200	210	25-60	13-38	330	37-45	7.2
EC300X1300	300X1300	250	20-90	40-100	300	55-75	11.6
EC350X750	350X750	300	30-75	30-40	300	30-37	7.2
EC250X400	250X400	210	20-80	10-14	300	15	2.65
EC400X600	400X600	350	40-100	30-40	275	30	6.5
EC500X750	500X750	425	50-120	40-75	283	55	10.5
EC600X800	600X750	500	55-160	40-80	283	55	11.35
EC600X900	600X900	500	65-160	80-140	275	55-75	14.8
EC750X1060	750X1060	630	80-140	120-200	250	90-110	26
EC800X1100	800X1060	650	80-160	120-220	250	90-110	25.5
EC900X1200	900X1200	750	95-210	250-400	220-250	132-160	48.4
EC1000X1200	1000X1200	800	150-235	260-420	220	160-180	48.5
EC1200X1300	1150X1300	1050	180-330	400-700	220	200-220	59
EC1300X1500	1300X1500	1180	220-410	600-1000	200	220-250	75

TECHNICAL SPECIFICATIONS

ADVANTAGES

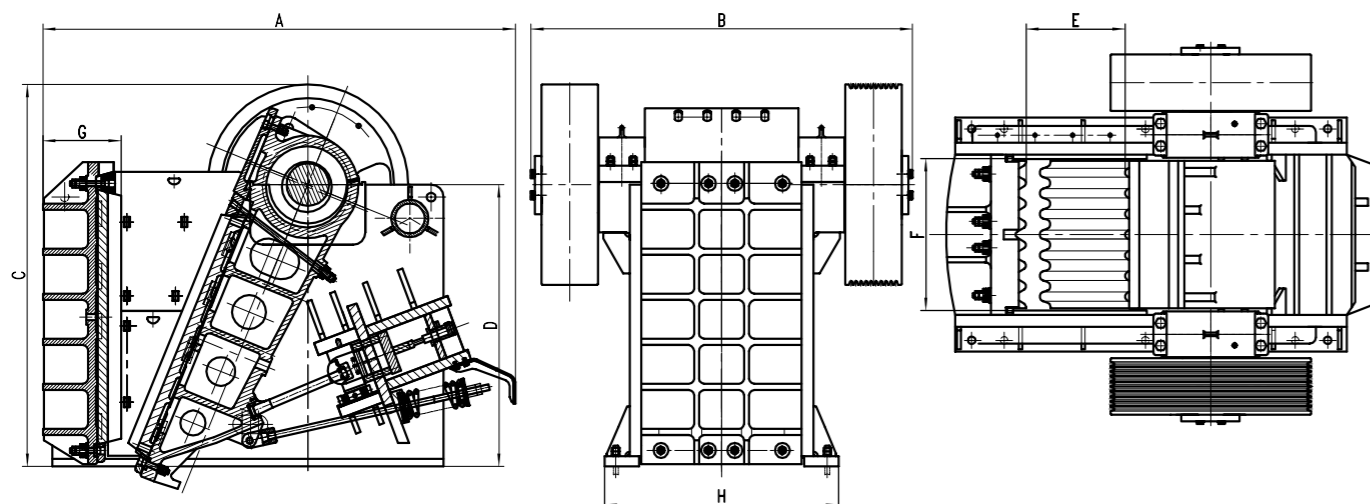
- Single down-thrust toggle design
- Heavy-duty rib-reinforced body
- Hydraulically assisted jaw setting adjustment
- Heavy-duty roller bearings
- Reliable operation- hundreds sold worldwide
- Crush the toughest materials



EC750 X 500 JAW CRUSHER

TECHNICAL SPECIFICATIONS

	Model	A	B	C	D	E	F	G	H
1	EC1200x1300	4357	3149	3749	2780	1150	1300	853	2160
2	EC1000x1200	3931	3026	3470	2570	1000	1200	822	1870
3	EC900x1200	3772	3049	3050	2250	900	1200	625	1870
4	EC800x1100	2923	2344	2865	1995	800	1060	538	1750
5	EC750x1060	2805	2294	2840	1890	750	1060	530	1750
6	EC600x900	2550	1926	2345	1470	600	900	510	1410
7	EC600x800	2439	1764	2341	1550	600	750	413	1210
8	EC500x750	1705	1732	1586	990	400	600	250	1010
9	EC400x600	1705	1732	1586	990	400	600	250	1010
10	EC300x1300	2180	2360	1723	1010	300	1300	479	1820
11	EC350x750	1730	1860	1648	980	350	750	320	1160
12	EC250x1200	1550	2192	1430	850	250	1200	330	1550
13	EC250x1000	1570	2034	1380	850	250	1000	330	1350
14	EC250x750	1670	1667	1330	850	250	750	332	1070
15	EC250x400	1450	1315	1298	735	250	400	300	740
16	EC150x750	1380	1659	1033	500	150	750	252	1130

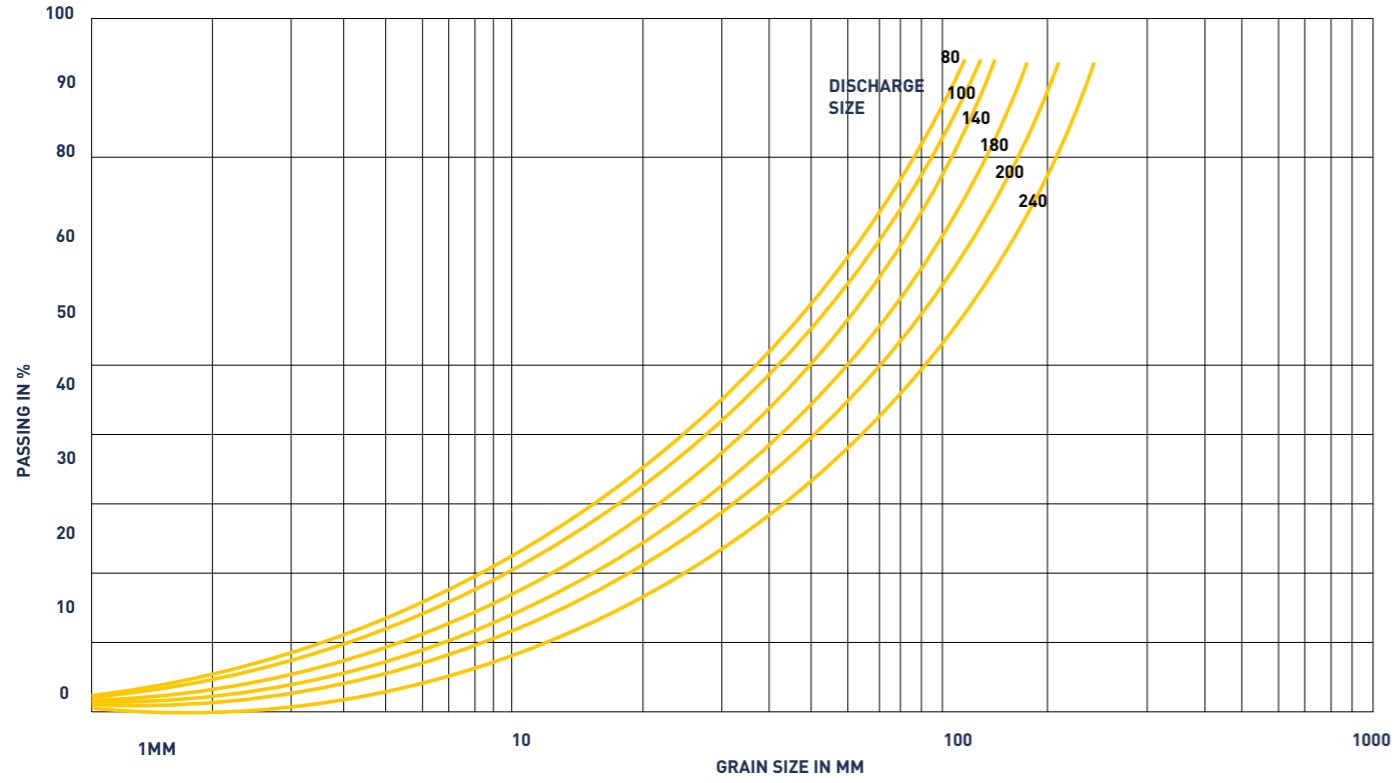


TECHNICAL SPECIFICATIONS

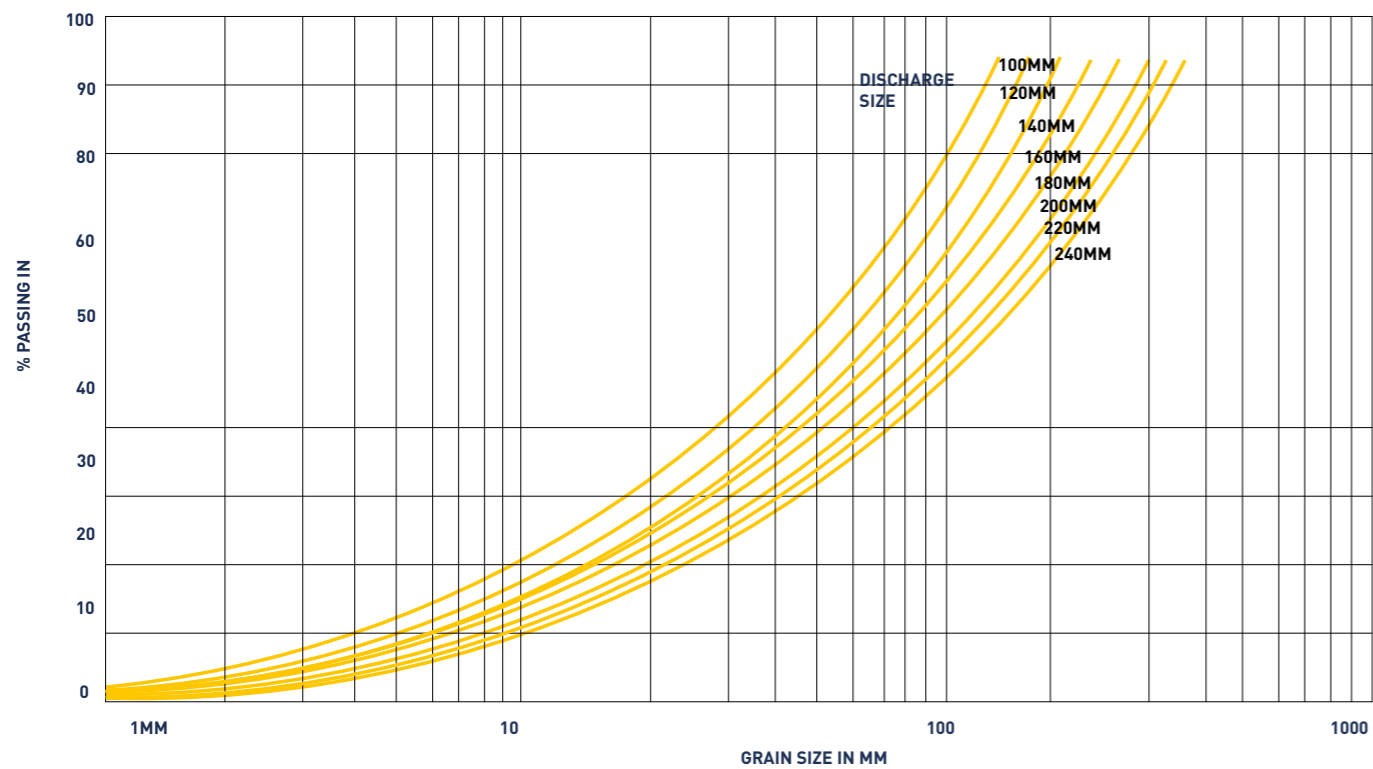


EC300 X 1300 JAW CRUSHER

EC750 X 1060 & EC800 X 1100



EC900 X 1200 & EC1000 X 1200



JAW CRUSHER EC900 X 600



EC1100 X 800 JAW CRUSHER

FOR FURTHER DETAILS & INFORMATION

Email: john@hansteel.net • admin@hansteel.com.au